



Pioneer Energy Services

Borehole Compensated Sonic Log

15-109-21360-00-00

Company Black Tea Oil, LLC
Well Rose Trust B #1
Field N/A
County Logan
State Kansas
Location 665' FNL & 3130' FEL
Sec: 29 **Twp:** 14S **Rge:** 32W
Other Services CNL/CDL MEL/DIL
Elevation 2682
Permament Datum Ground Level
Log Measured From Kelly Bushing
Drilling Measured From Kelly Bushing
Elevation 2694
K.B. D.F. G.I.L. 2682

Run Number	10/31/2014		Two	
Type Log	BHC Sonic			
Depth Driller	4430			
Depth Logger	4434			
Bottom Logged Interval	4423			
Top Logged Interval	250			
Type Fluid In Hole	Chemical			
Salinity, PPM CL	9000			
Density	9.1			
Level	Full			
Max. Rec. Temp. F	120			
Operating Rig Time	5 Hours			
Equipment -- Location	91 Hays			
Recorded By	D. Schmidt			
Witnessed By	Richard Thomasson			

Borehole Record		Casing Record					
Run No	Bit	From	To	Size	Wgt.	From	To
1	12.25	00	264	8.625	24#	00	264
2	7.875	264	4430				

<<< Fold Here >>>

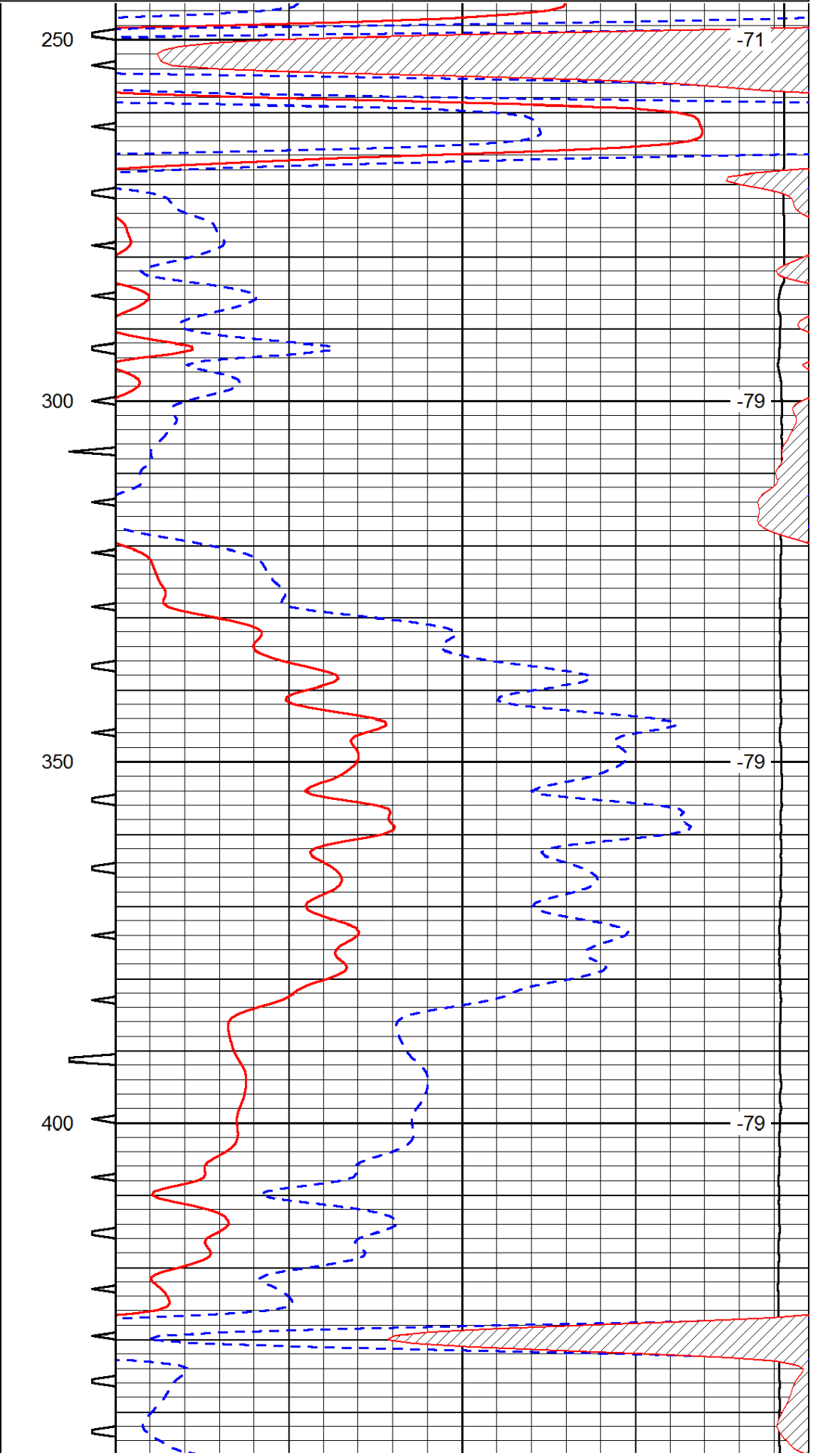
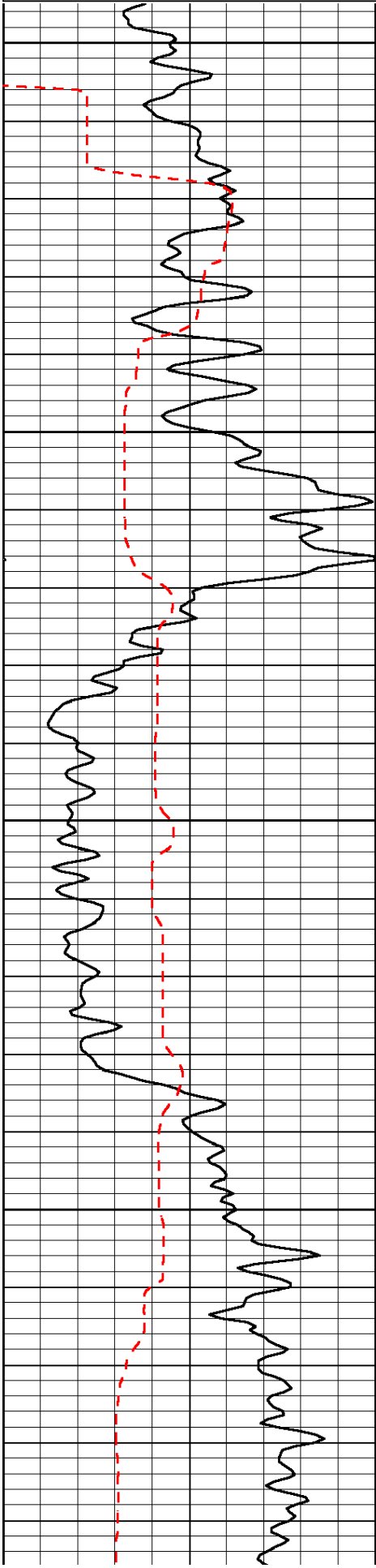
All interpretations are opinions based on inferences from electrical or other measurements and we cannot and do not guarantee the accuracy or correctness of any interpretation, and we shall not, except in the case of gross or willful negligence on our part, be liable or responsible for any loss, costs, damages, or expenses incurred or sustained by anyone resulting from any interpretation made by any of our officers, agents or employees. These interpretations are also subject to our general terms and conditions set out in our current Price Schedule.

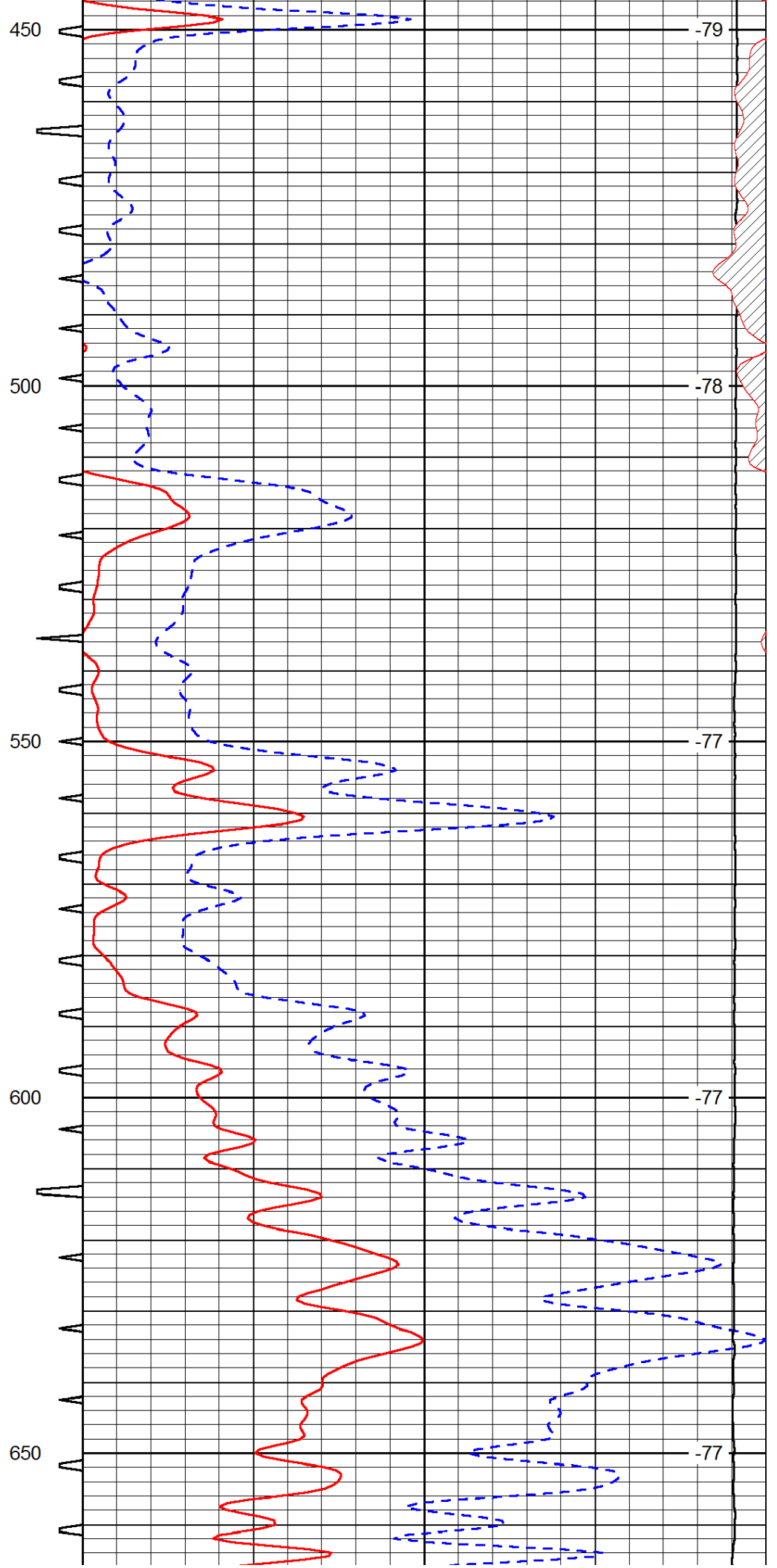
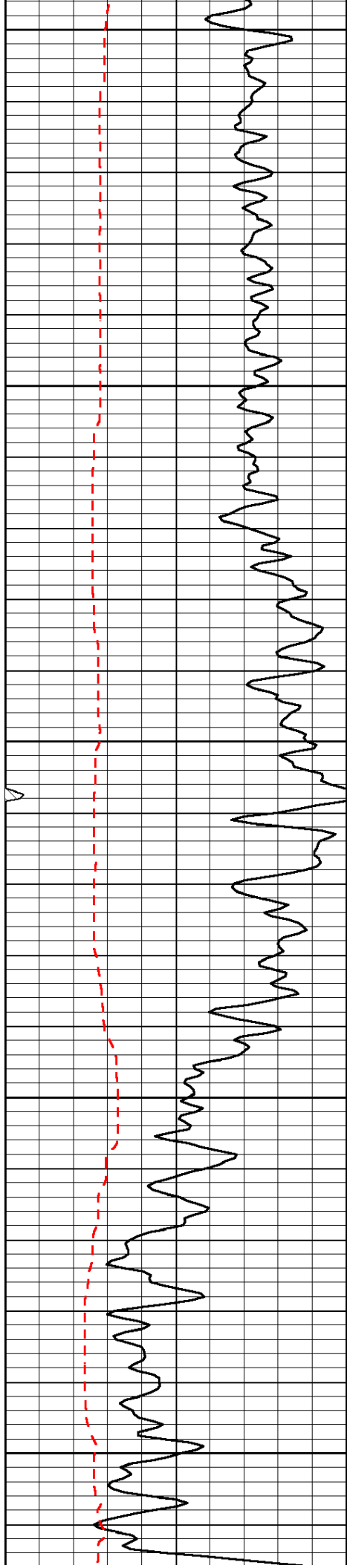
Comments

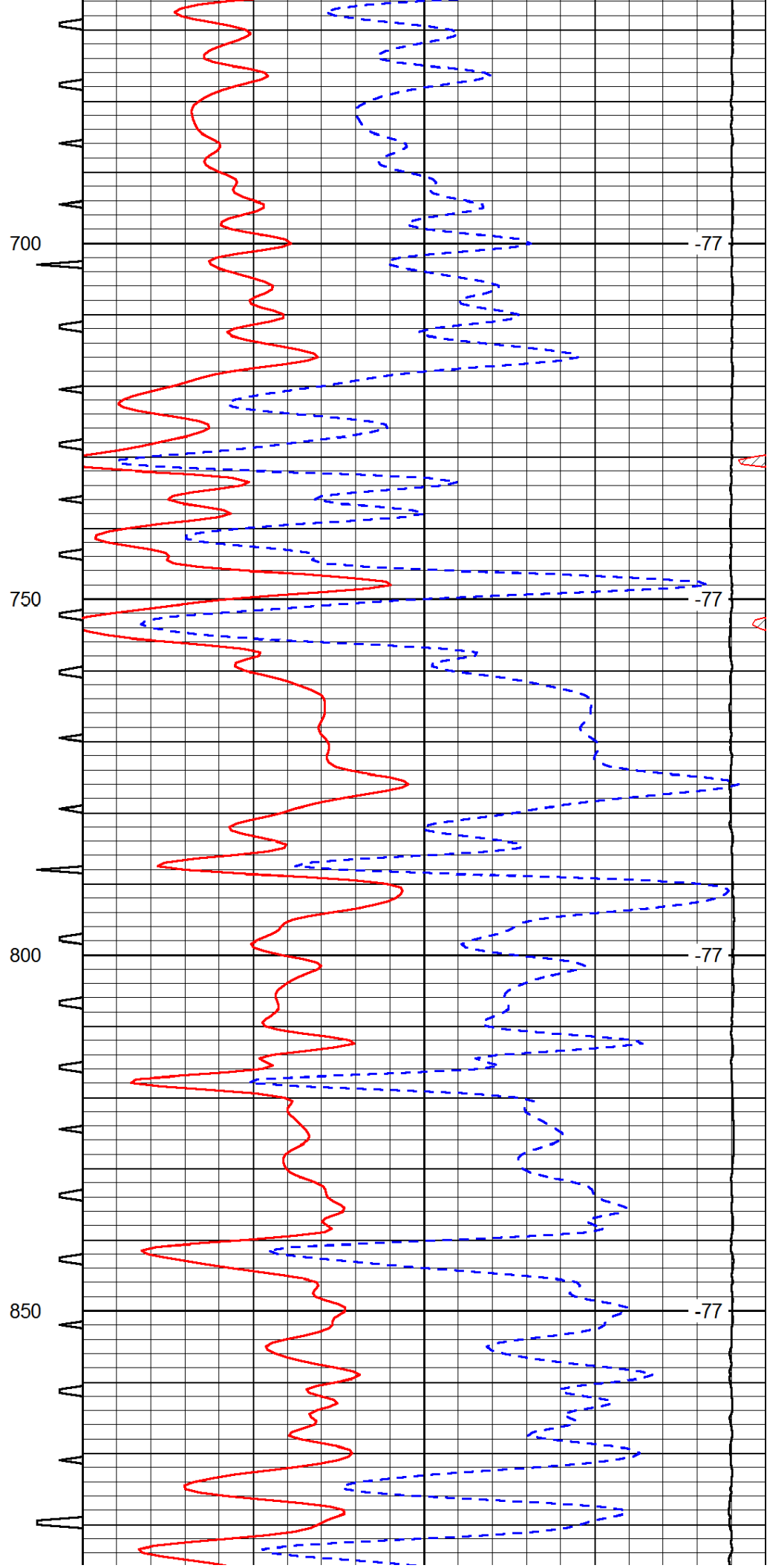
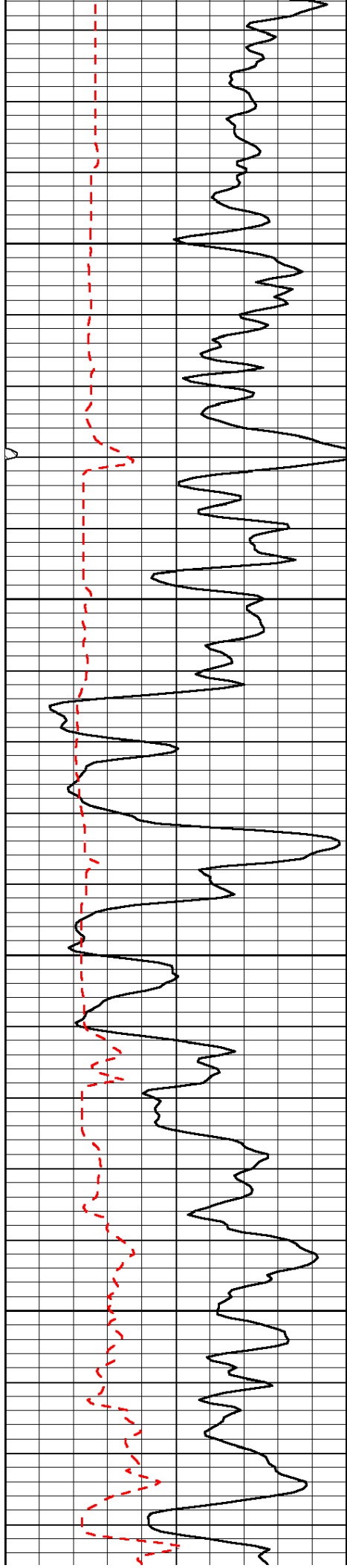
Thank you for using Pioneer Energy Services
 www.pioneeres.com
 785 625 3858
 Oakley,
 South to Gold Rd, 2 1/4 West,
 North into about 2 miles

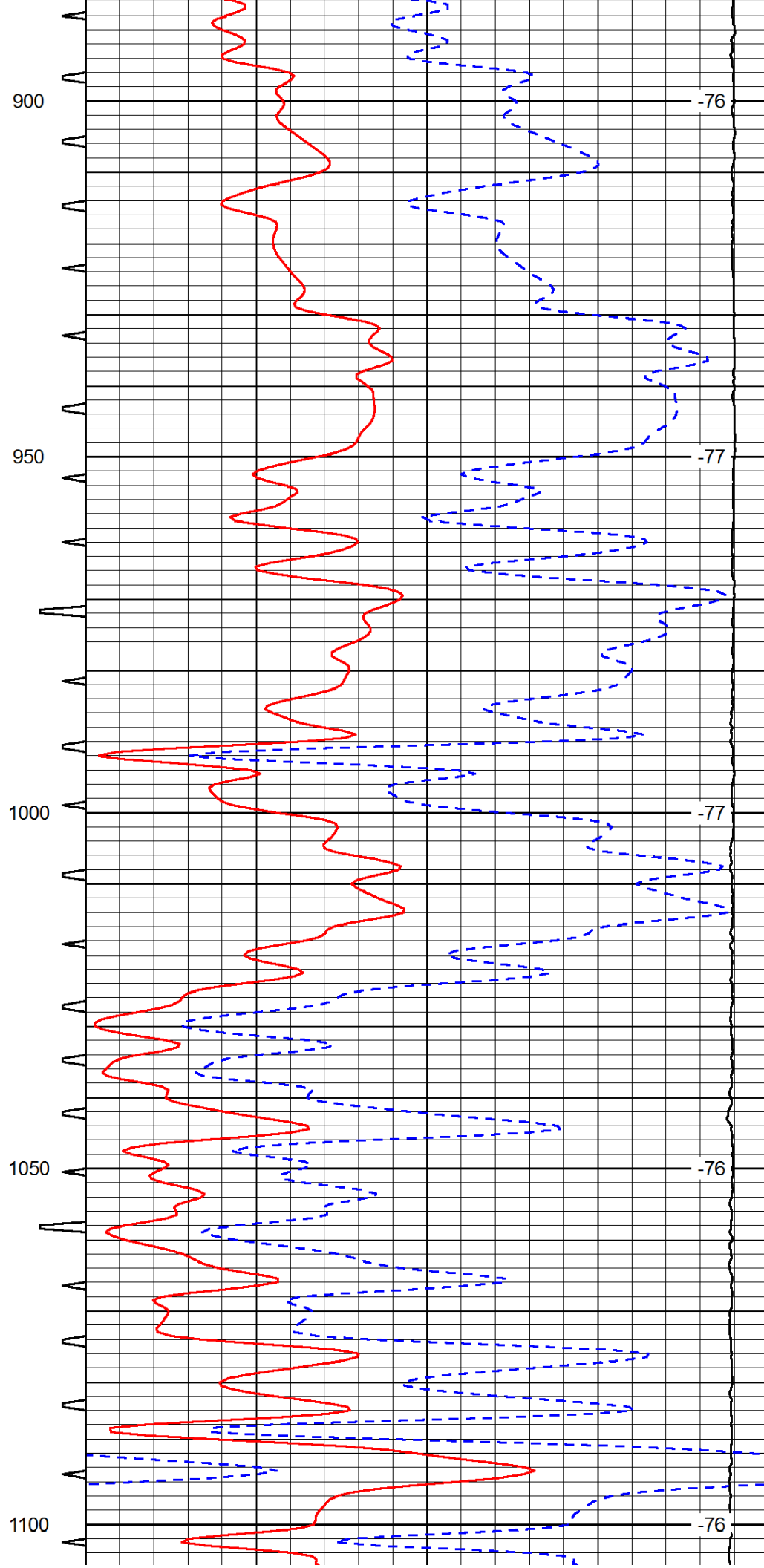
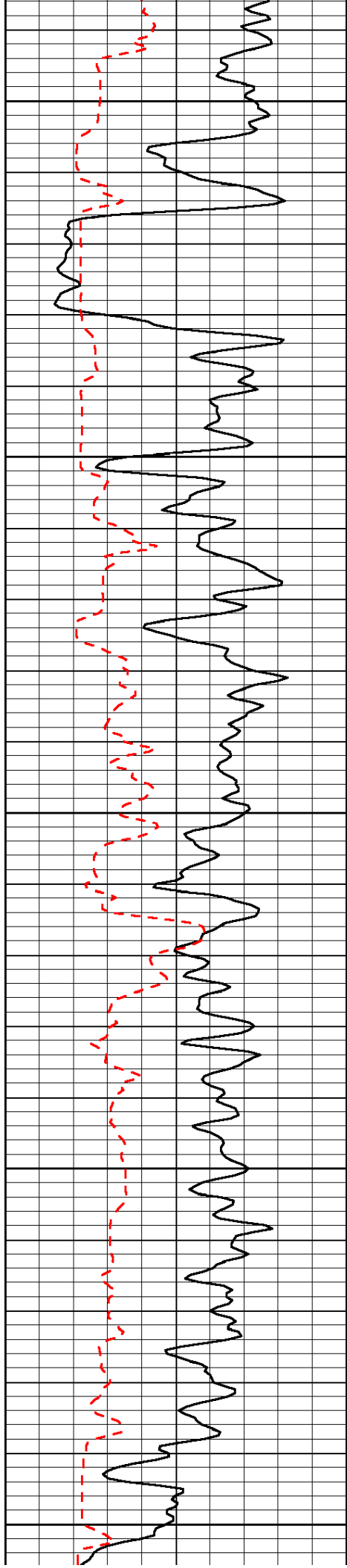
Database File: c:\warrior\data\black tea_rose trust b #1\black tea_rose trust_b_1hd.db
 Dataset Pathname: dil/btstkml
 Presentation Format: sonic
 Dataset Creation: Fri Oct 31 08:01:25 2014
 Charted by: Depth in Feet scaled 1:240

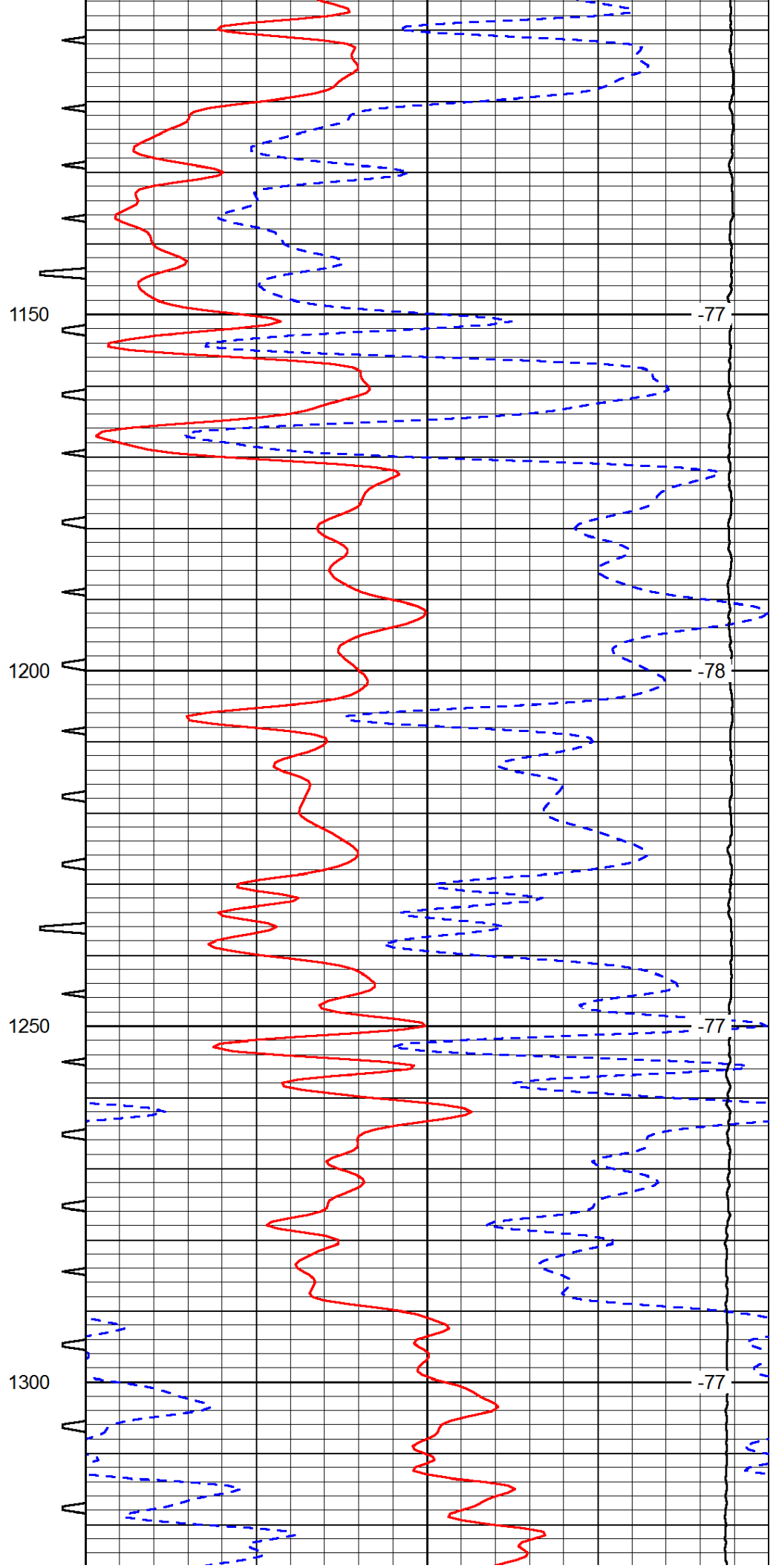
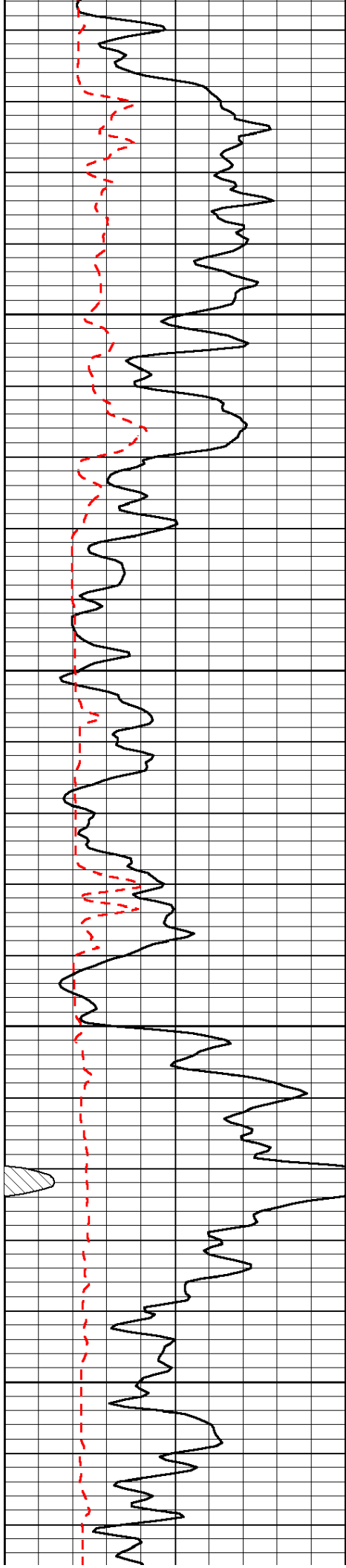
0	Gamma Ray	150	Sonic Int	140	Delta Time (usec/ft)	40
150	Gamma Ray	300	5	0	SPOR	-10
6	Caliper (GAPI)	16		15000	LTEN (lb)	0
						LSPD

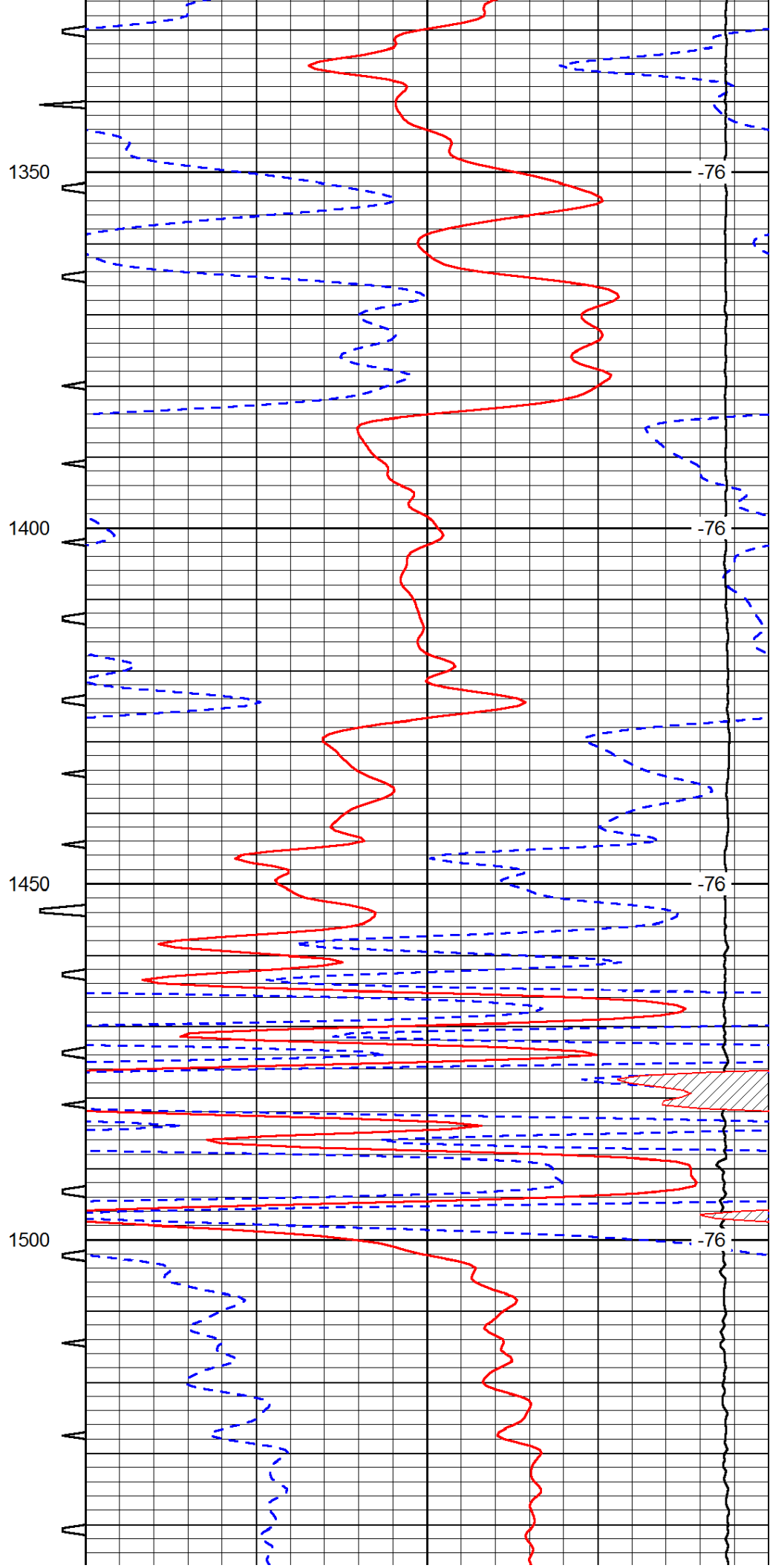
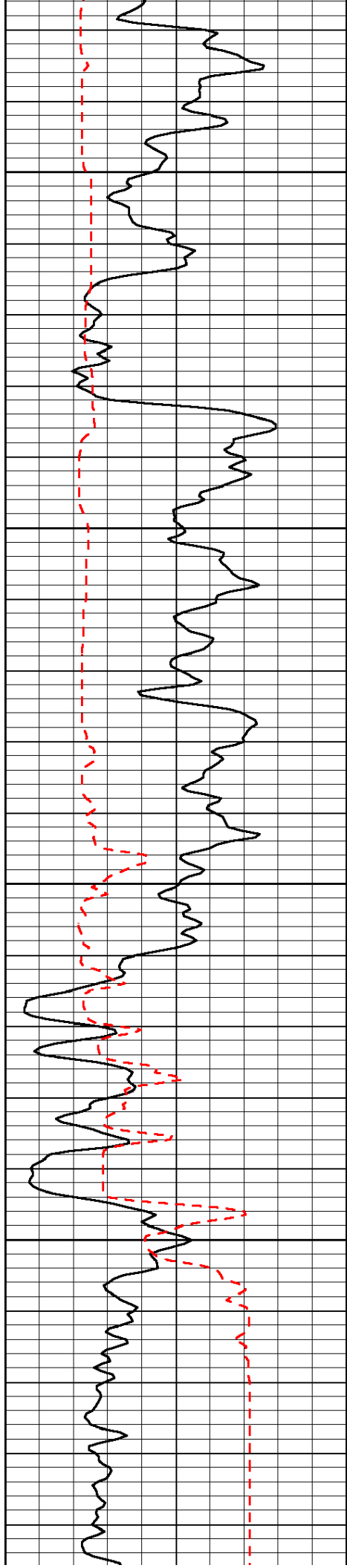


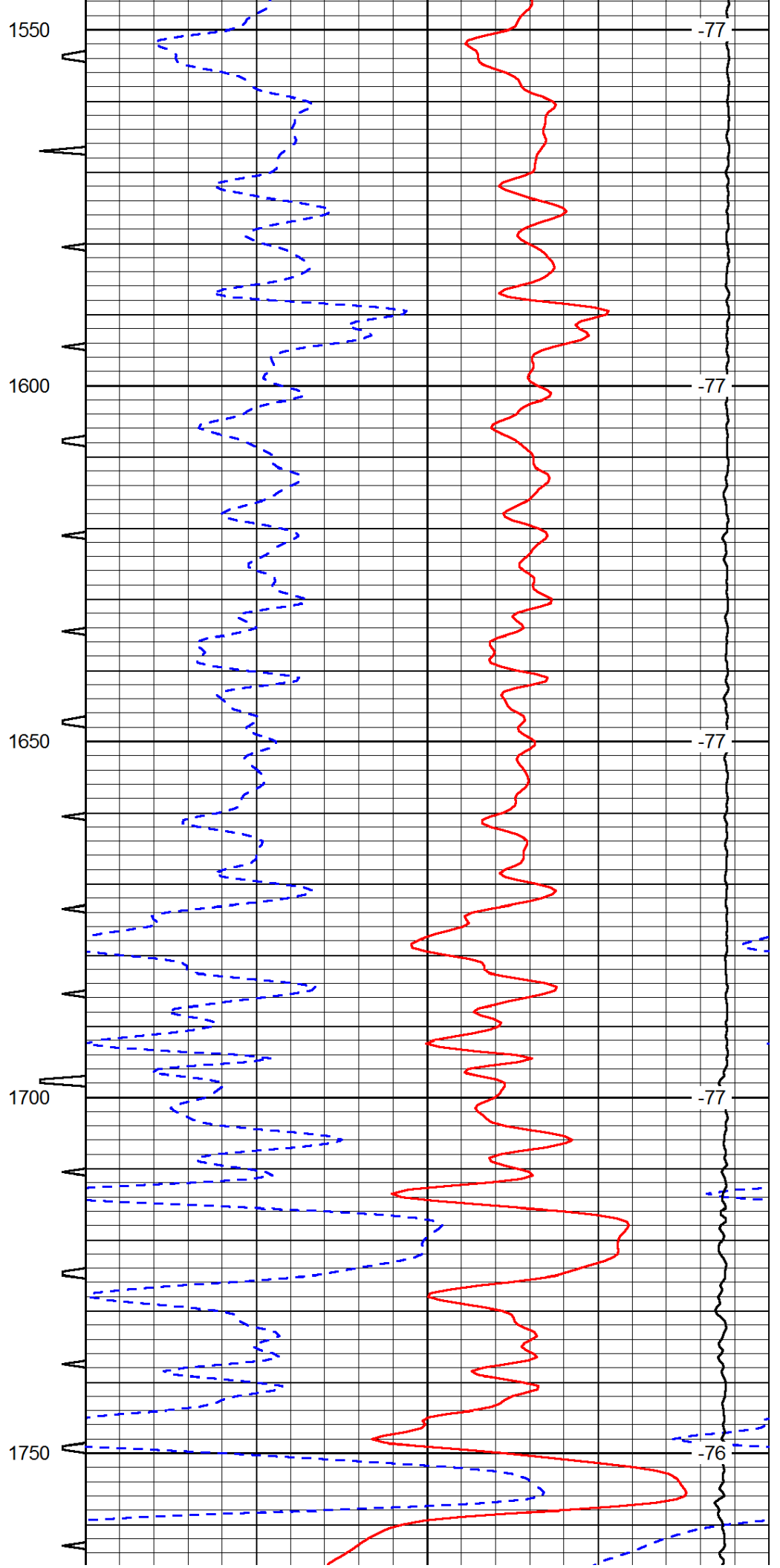
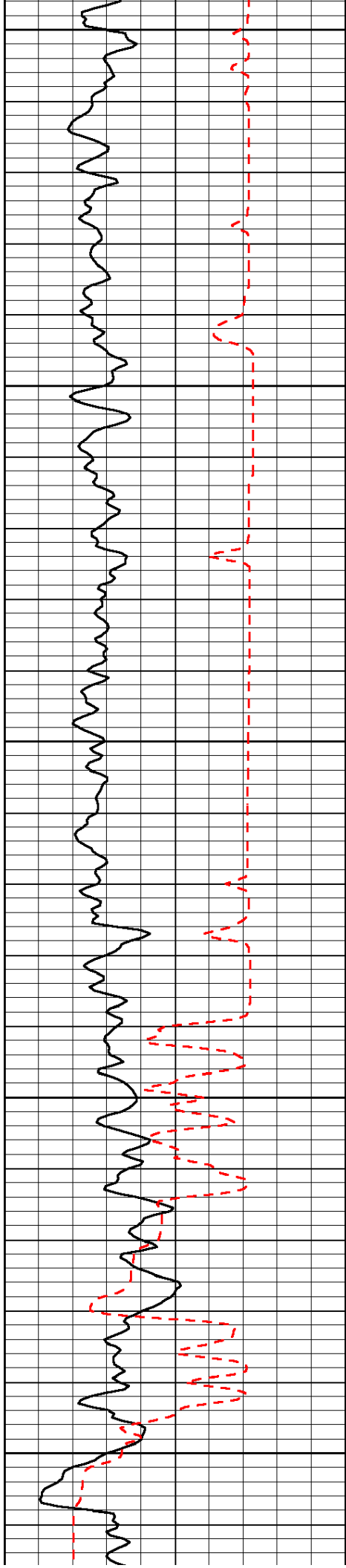


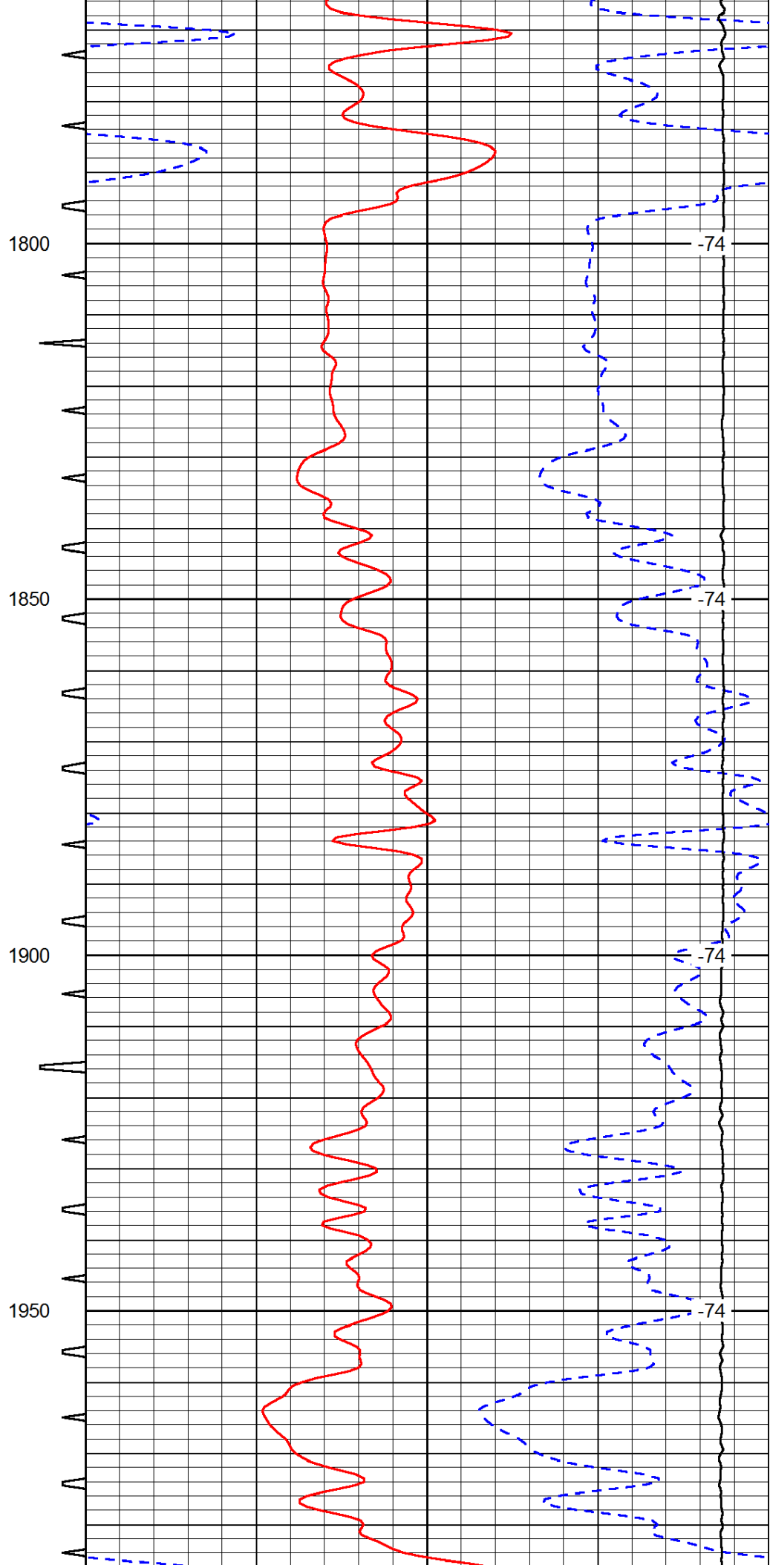
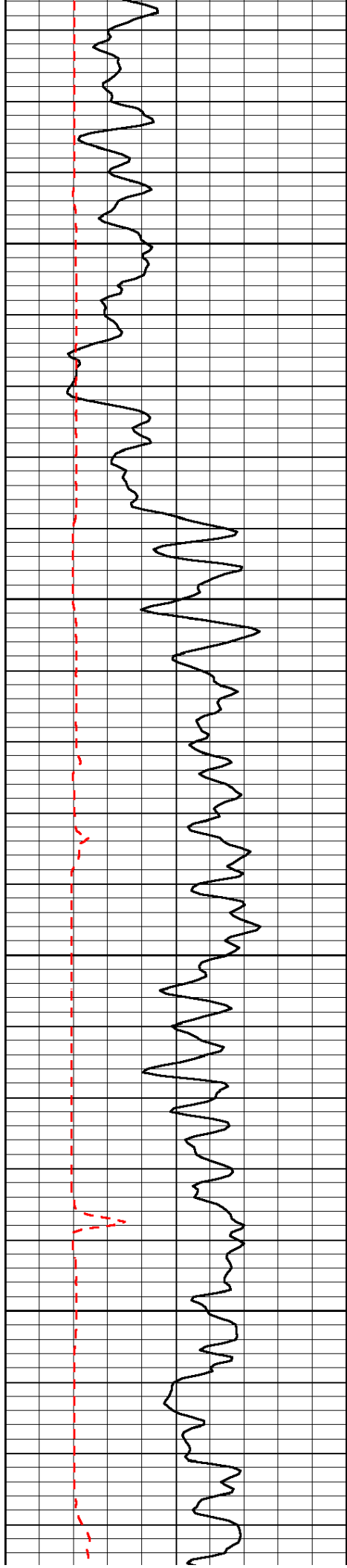


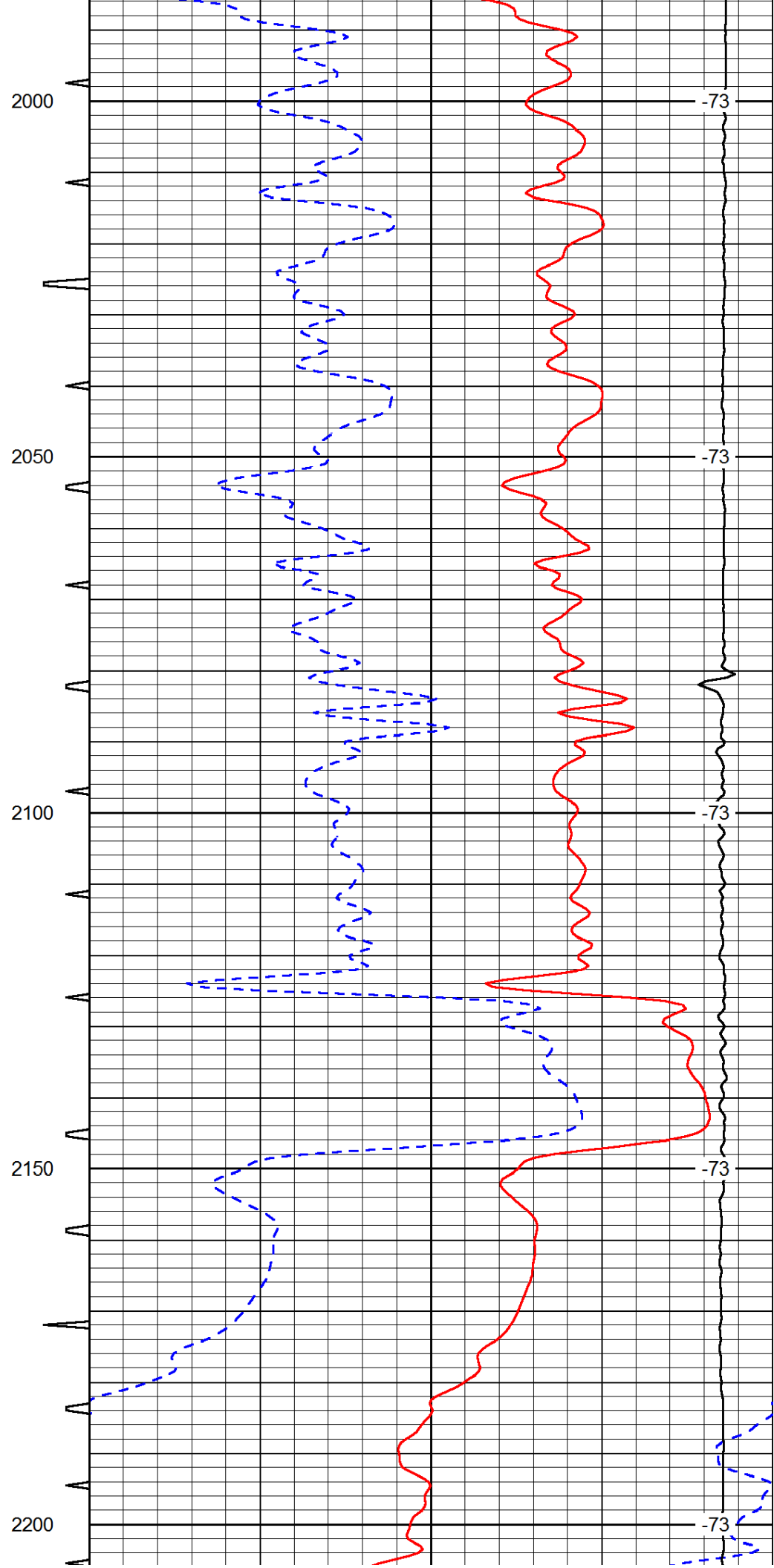
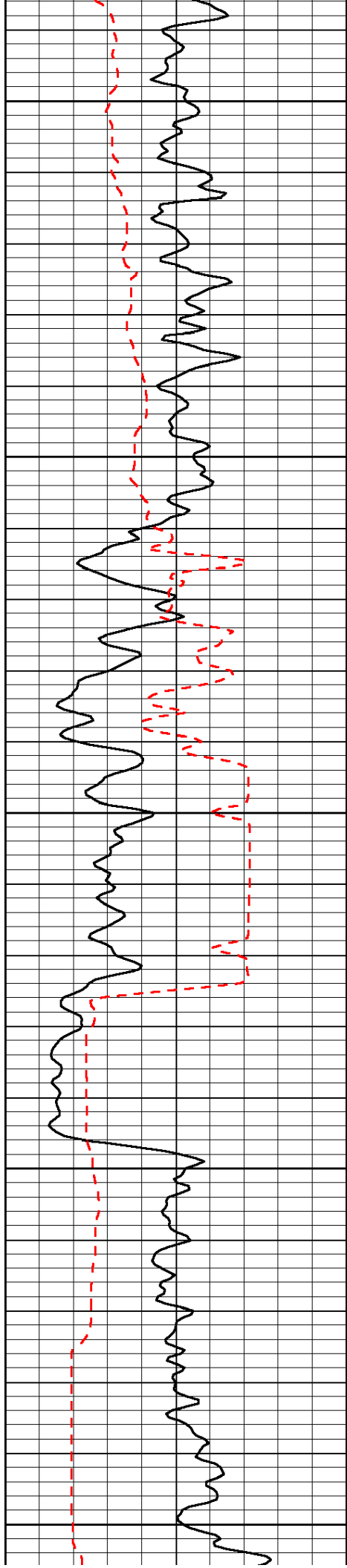


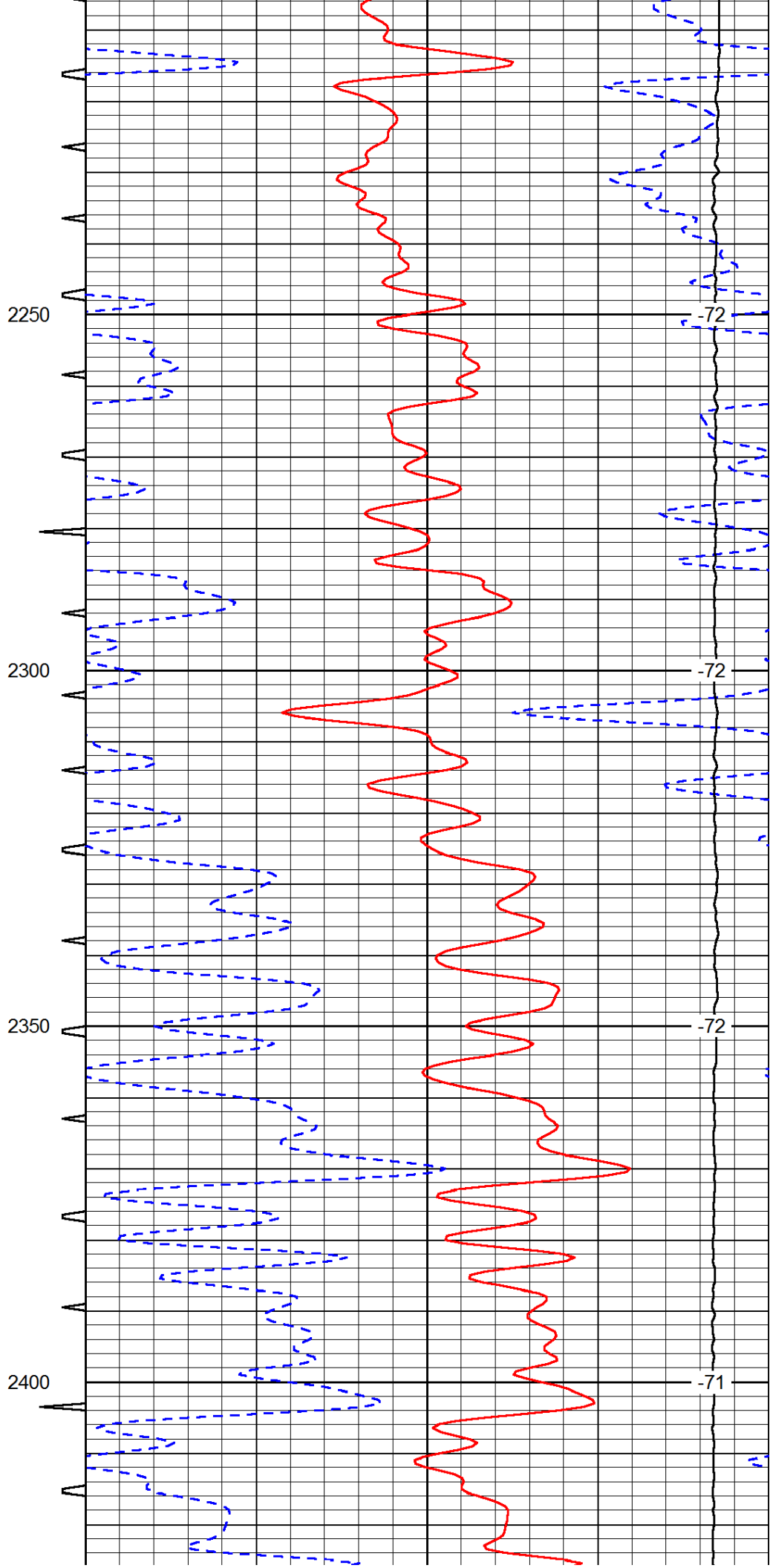
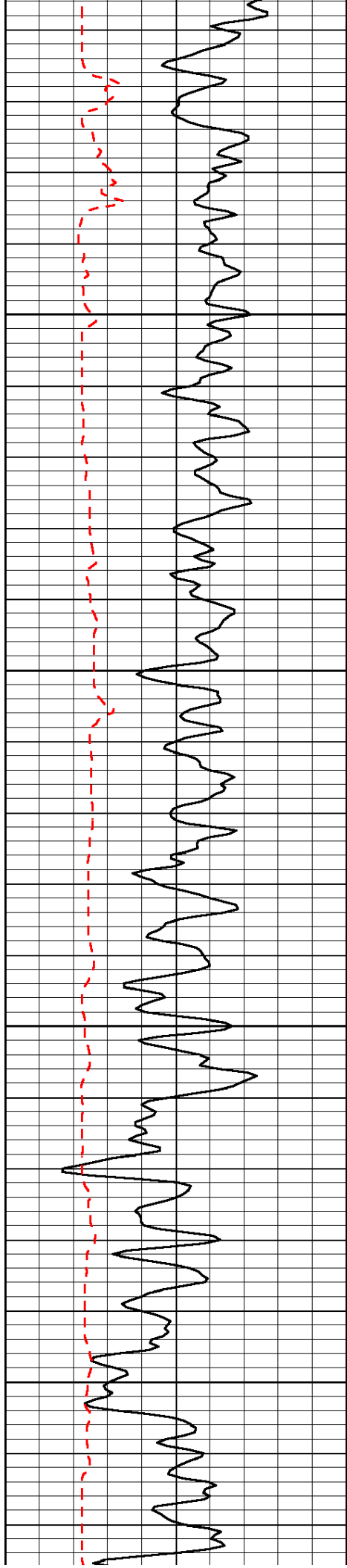


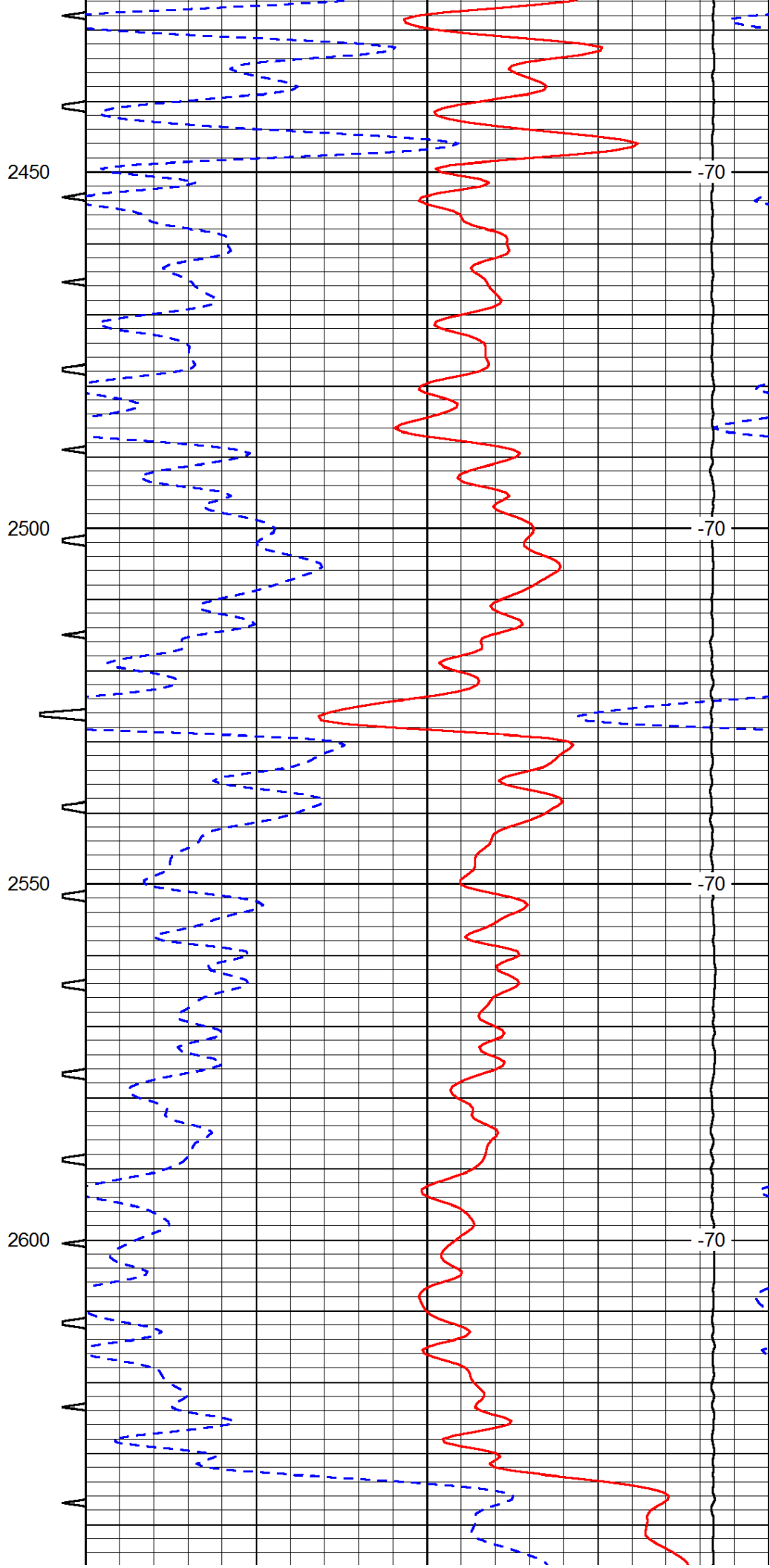
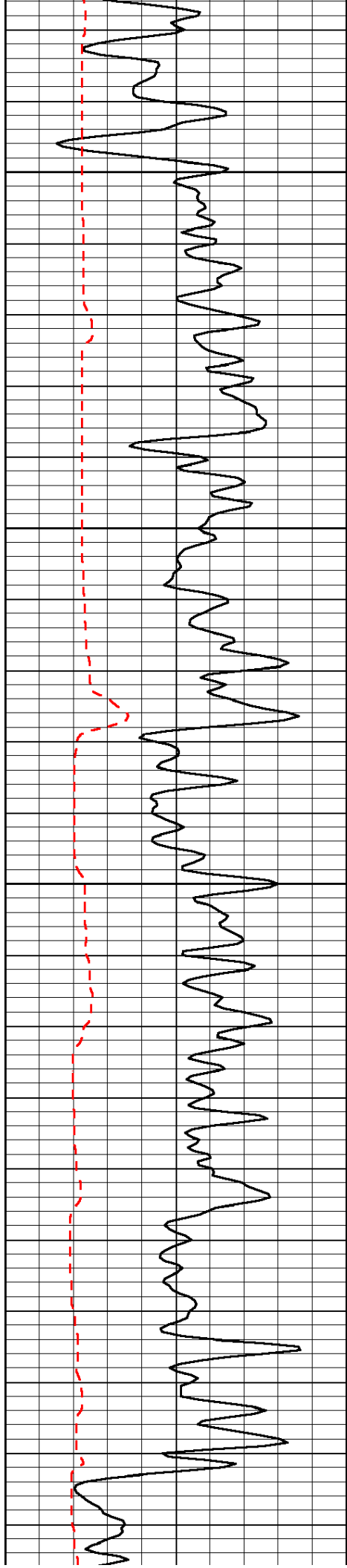


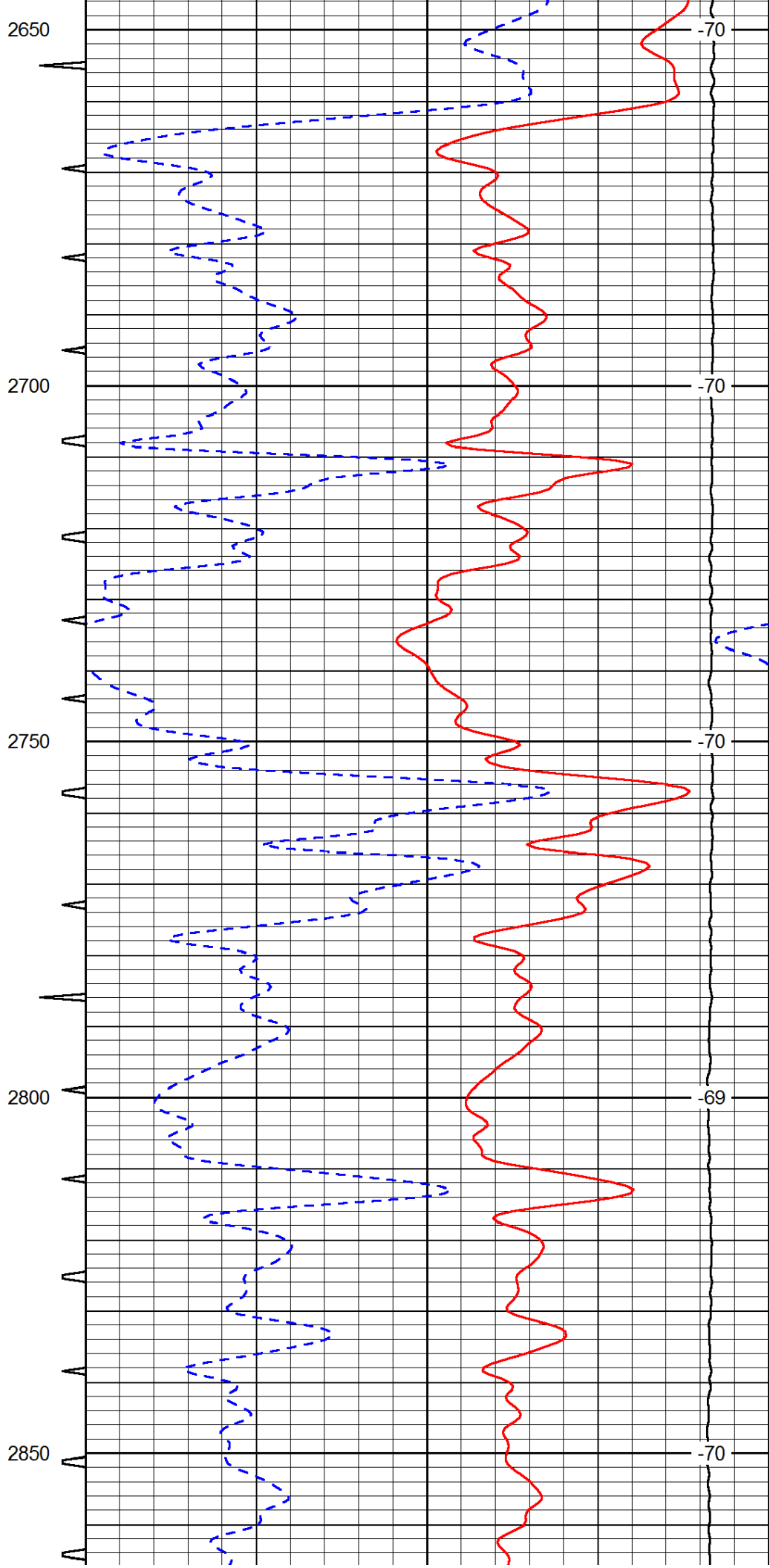
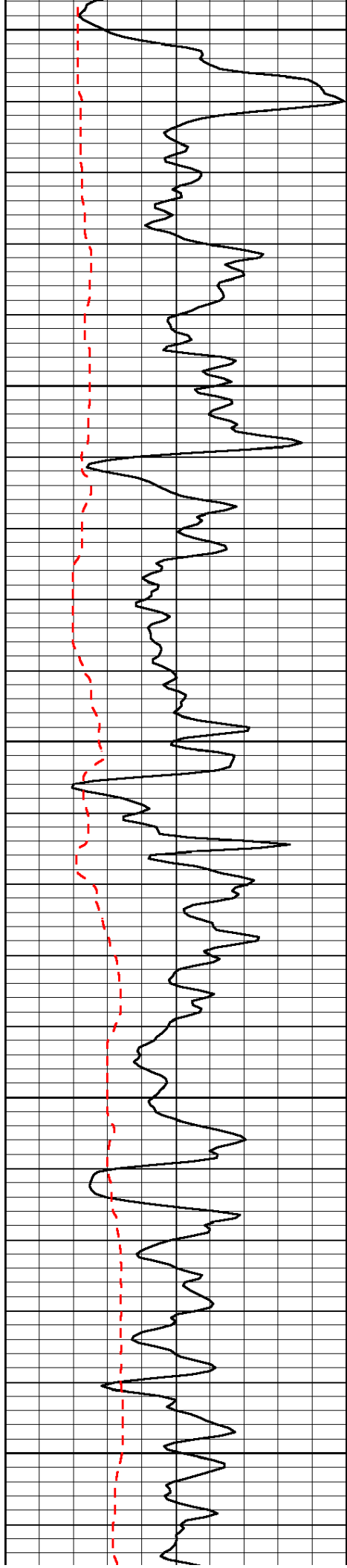


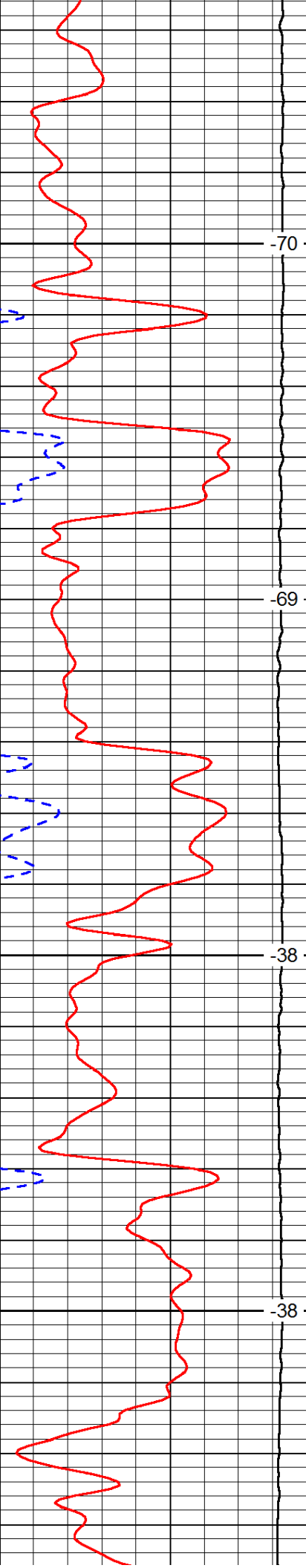
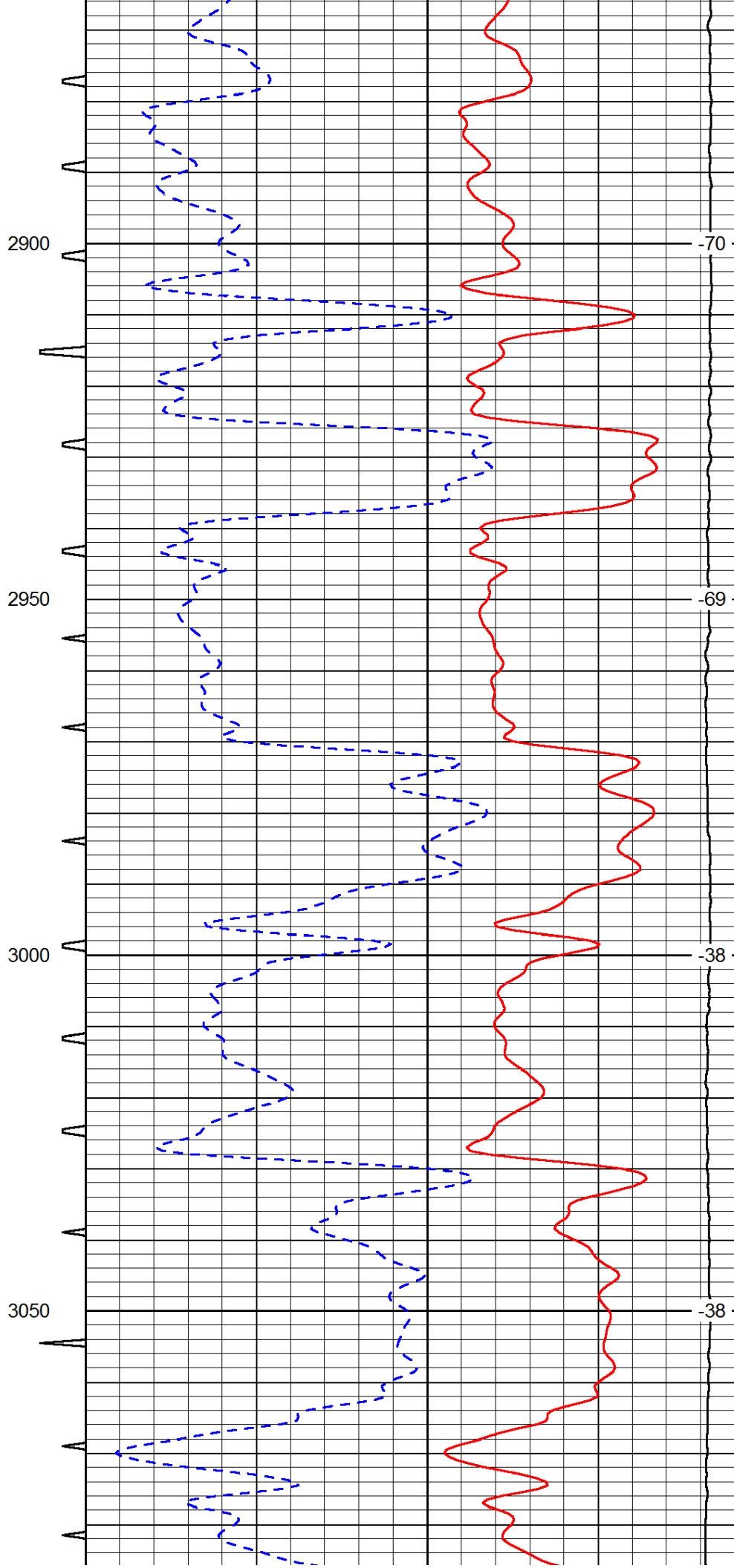
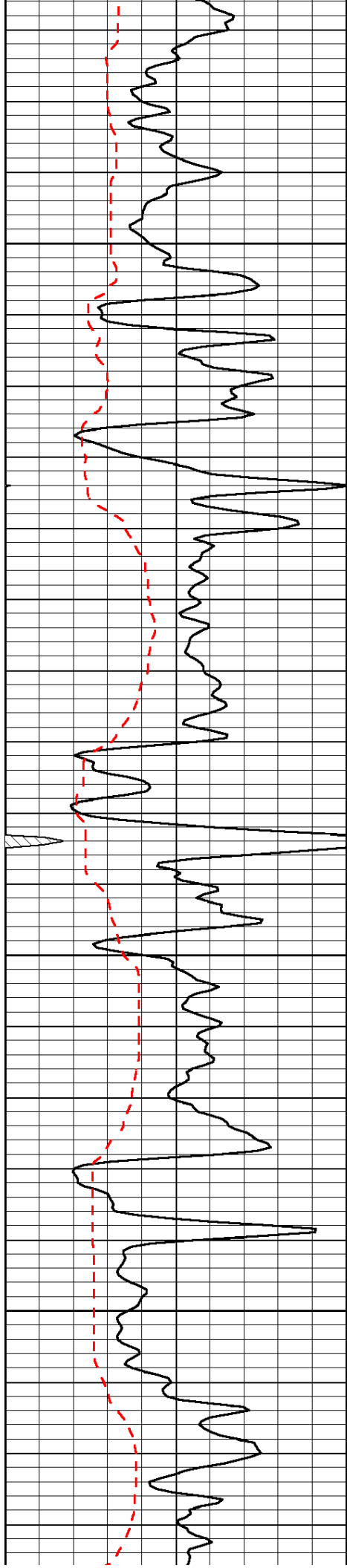


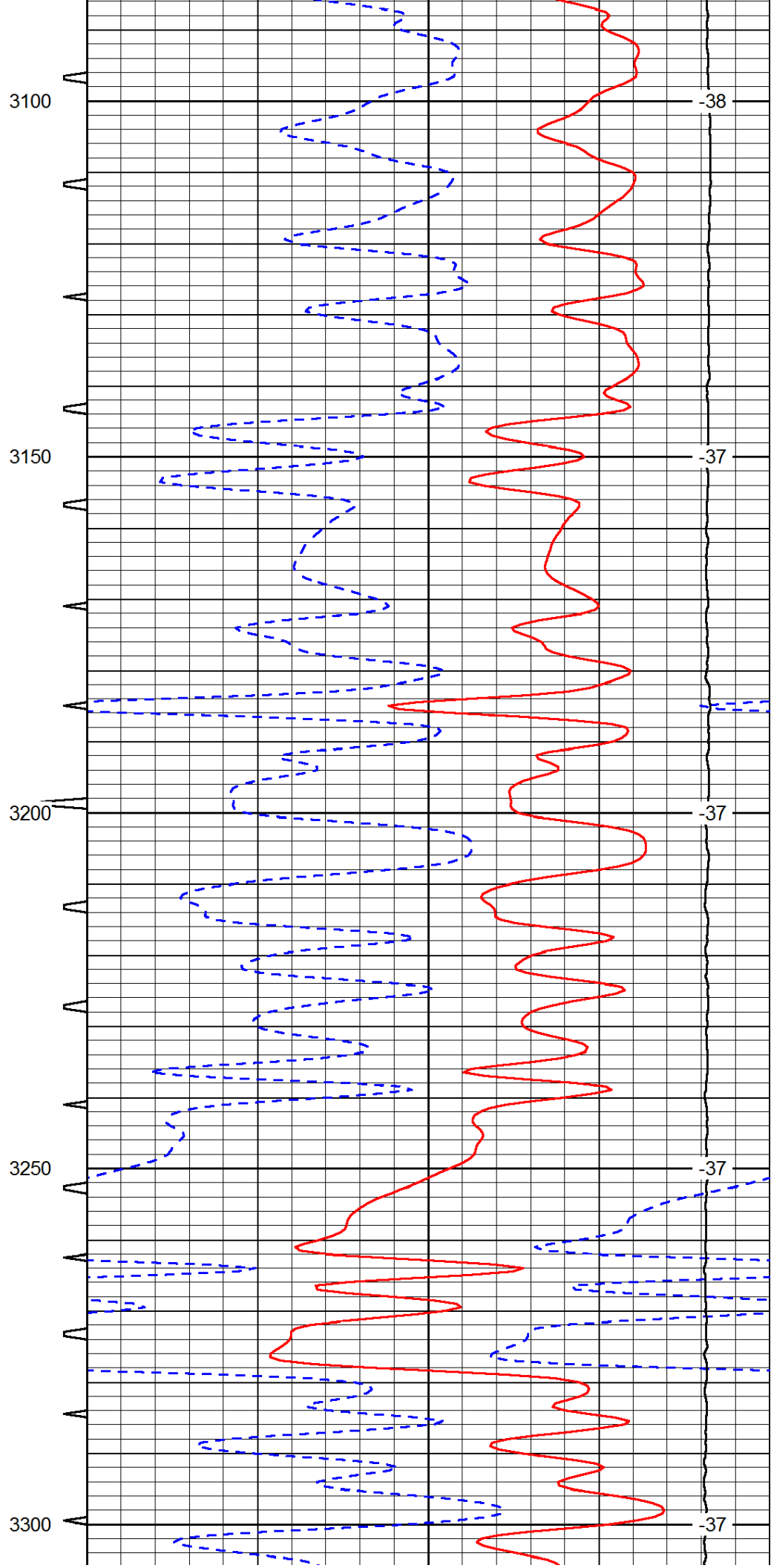
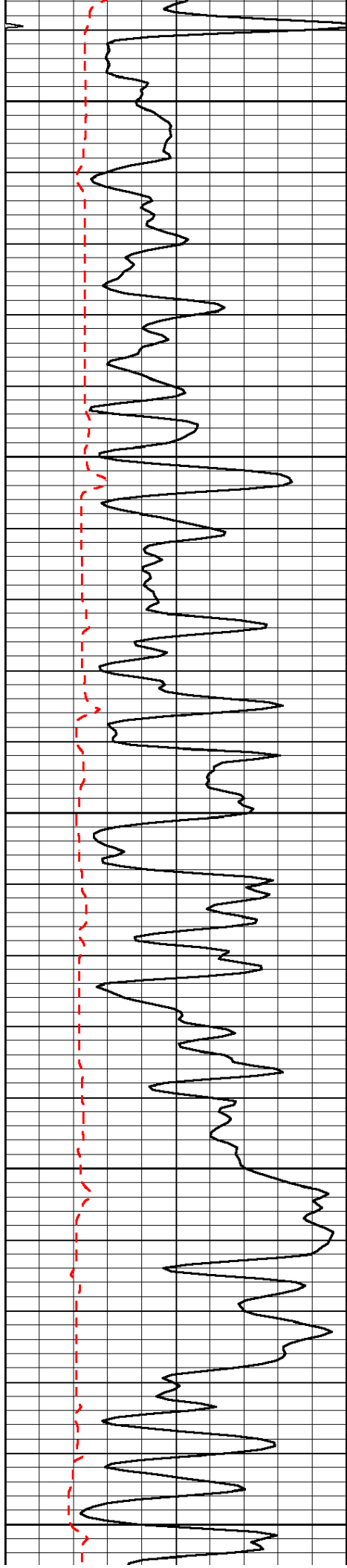












3100

-38

3150

-37

3200

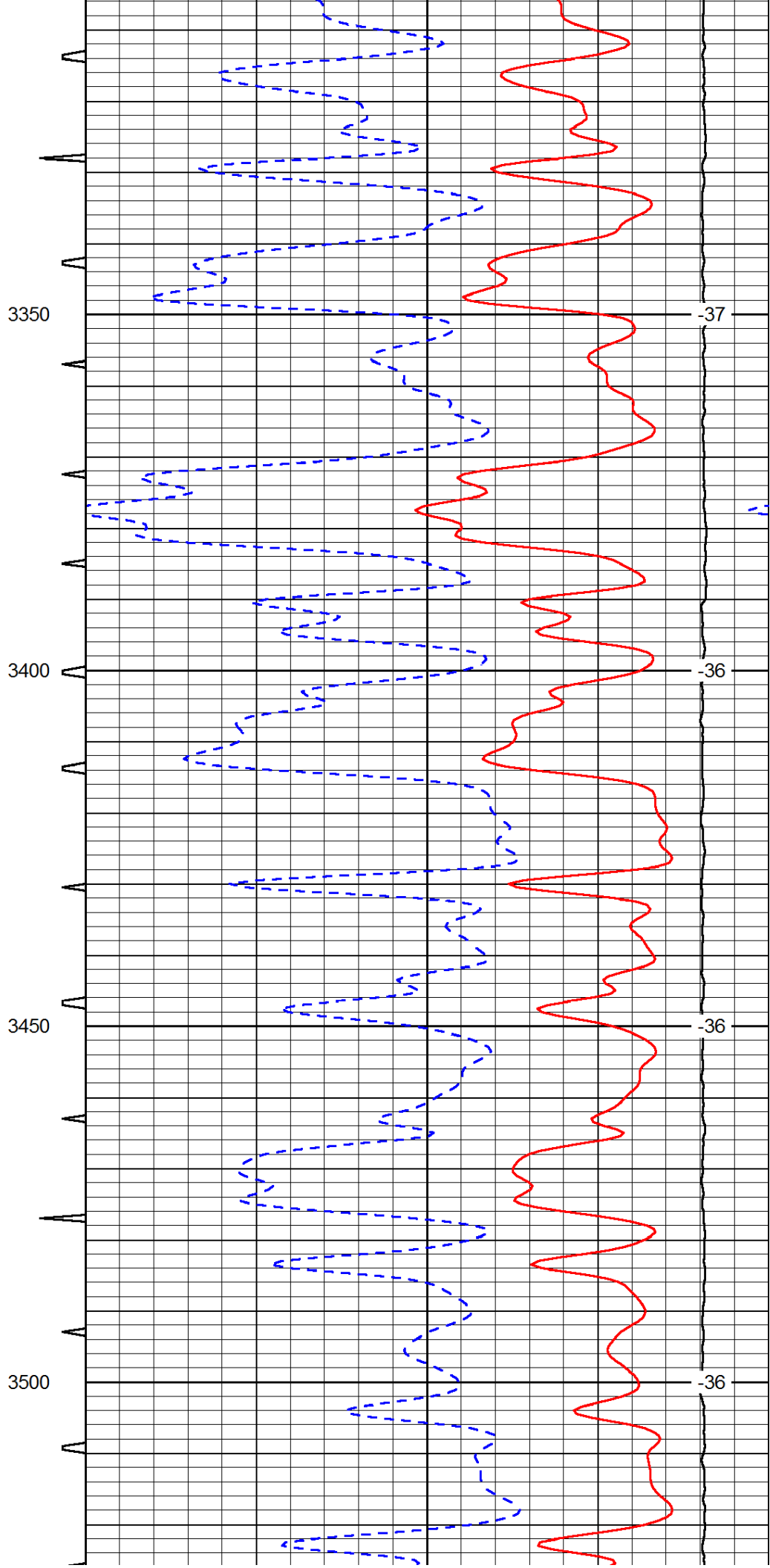
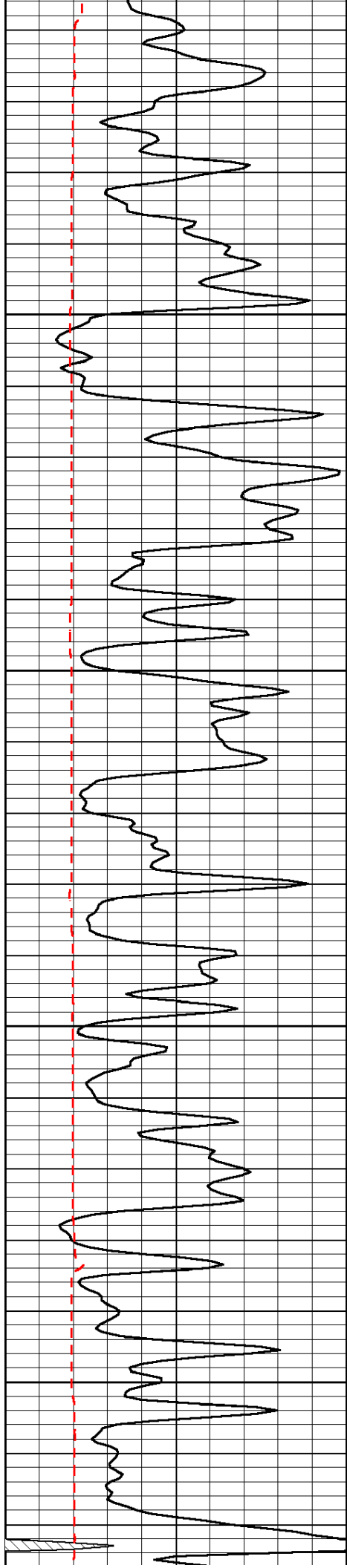
-37

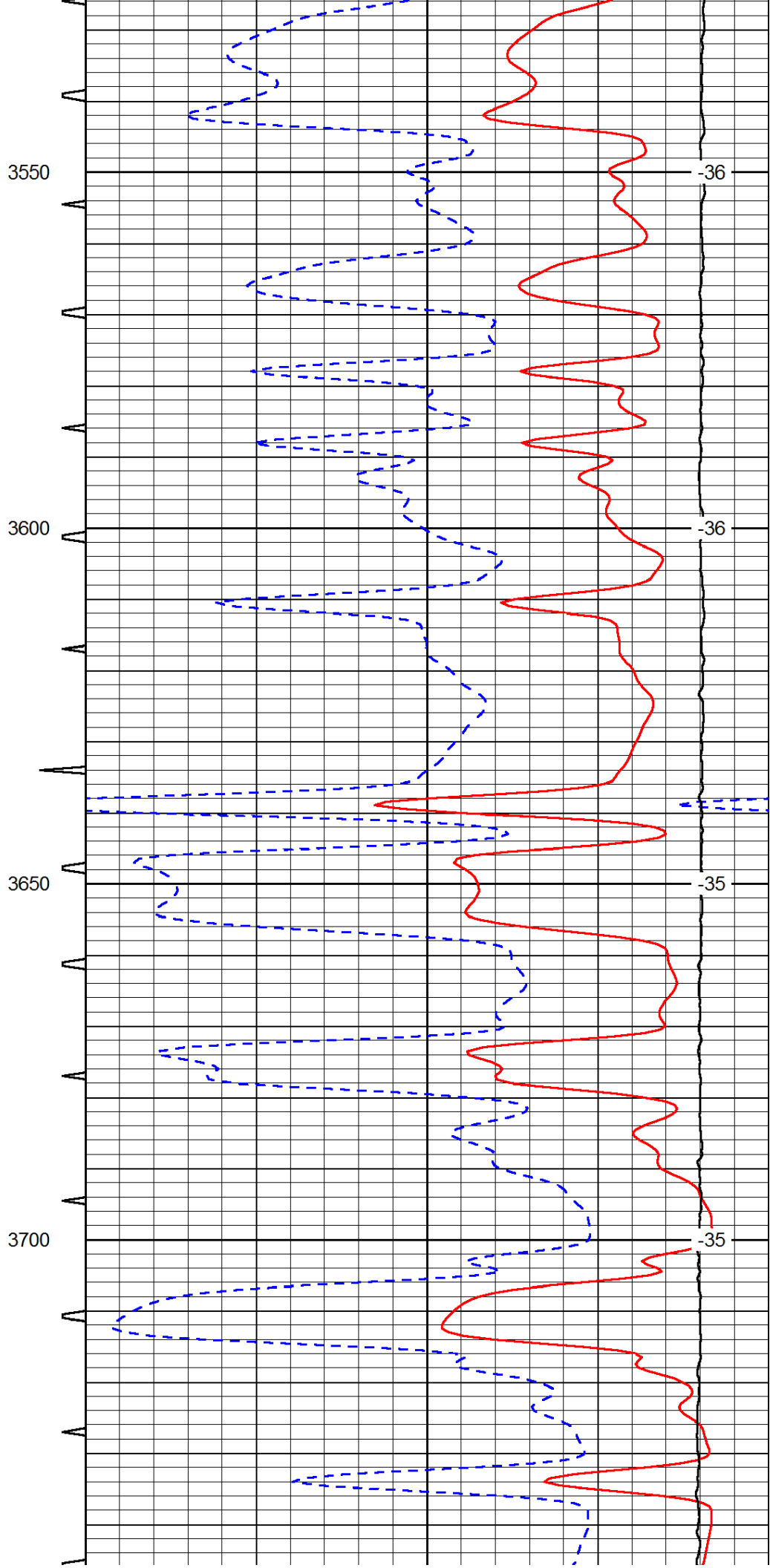
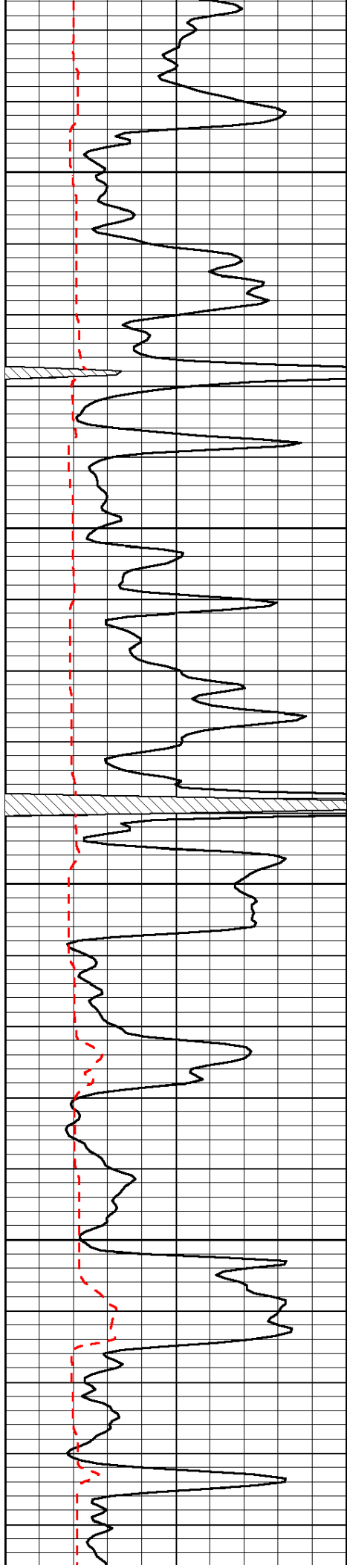
3250

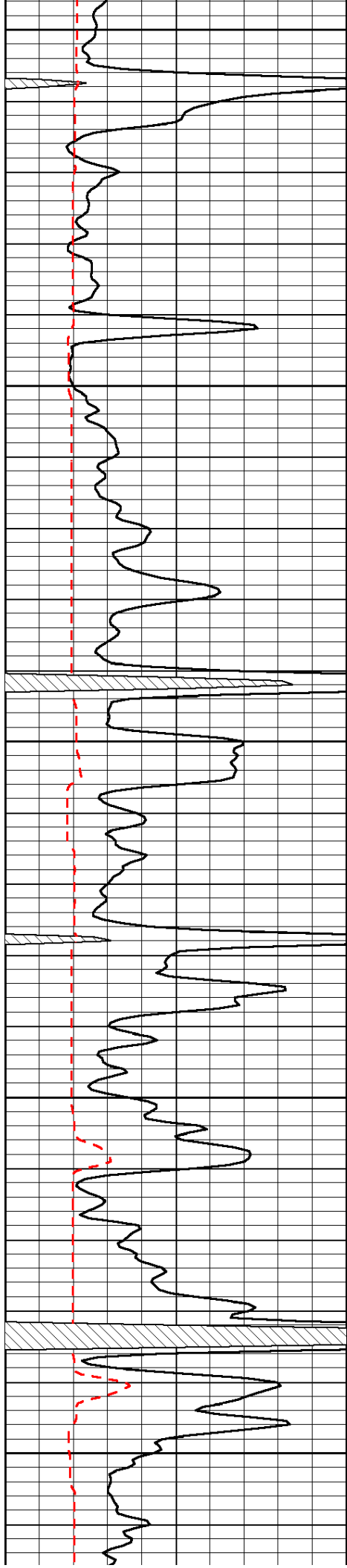
-37

3300

-37







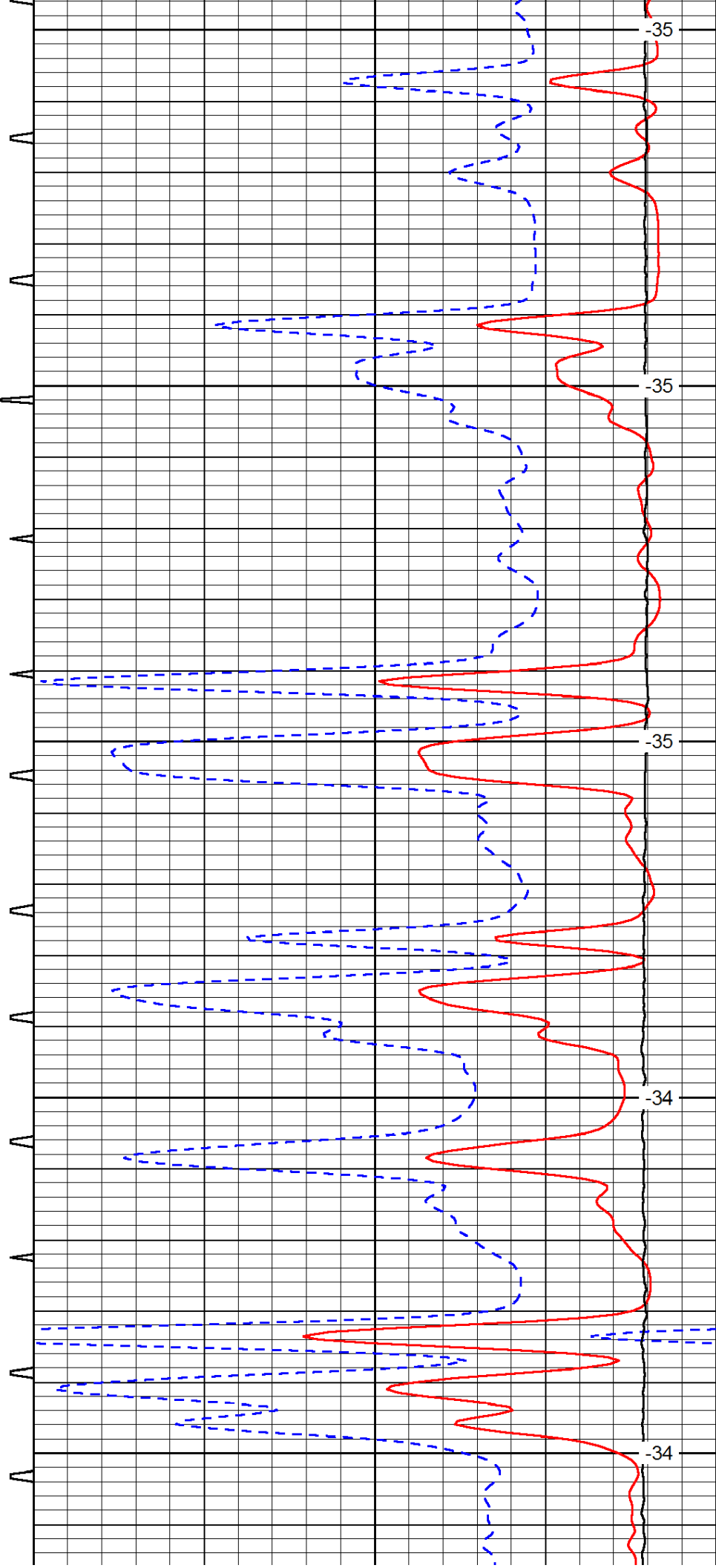
3750

3800

3850

3900

3950



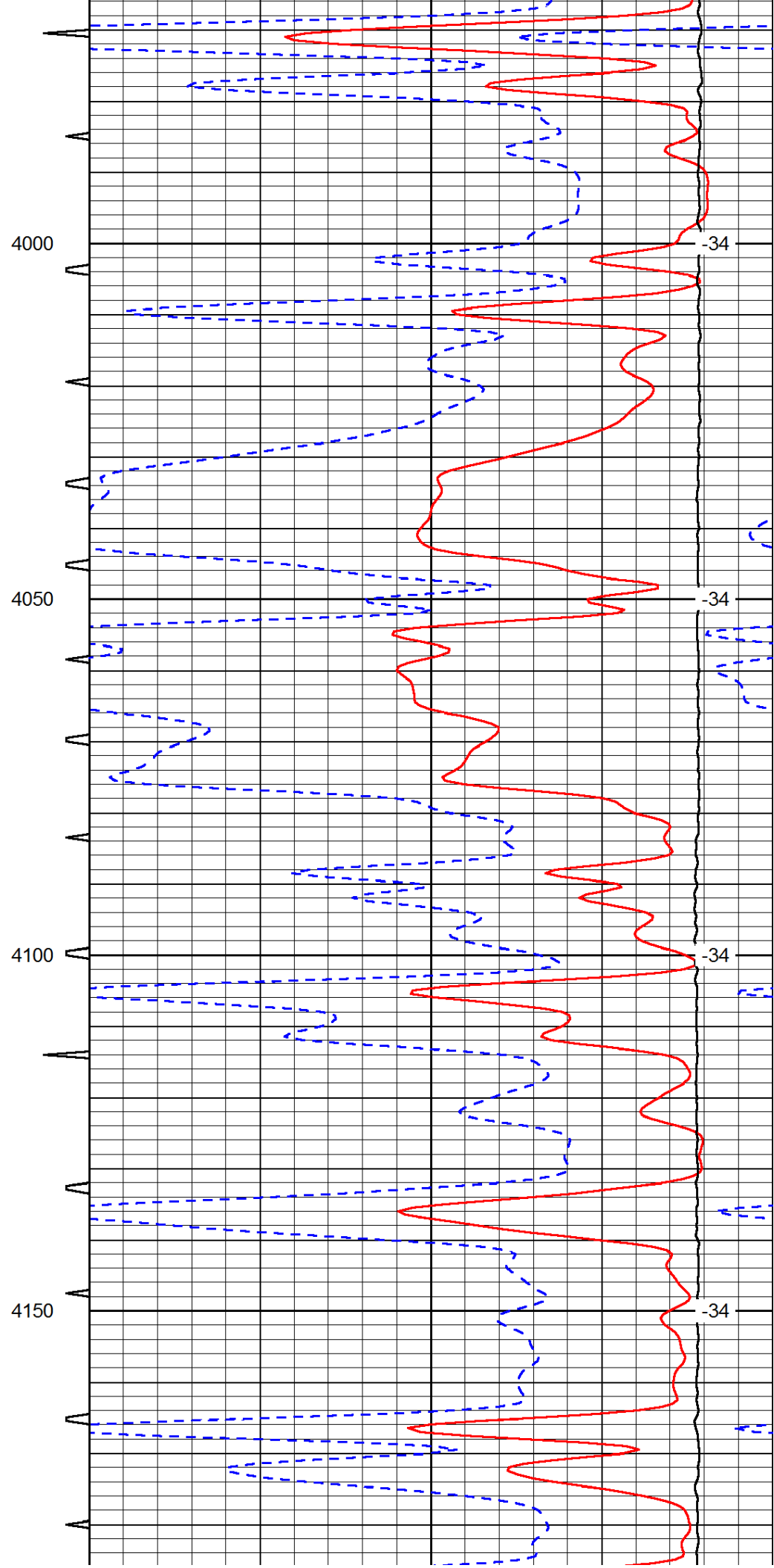
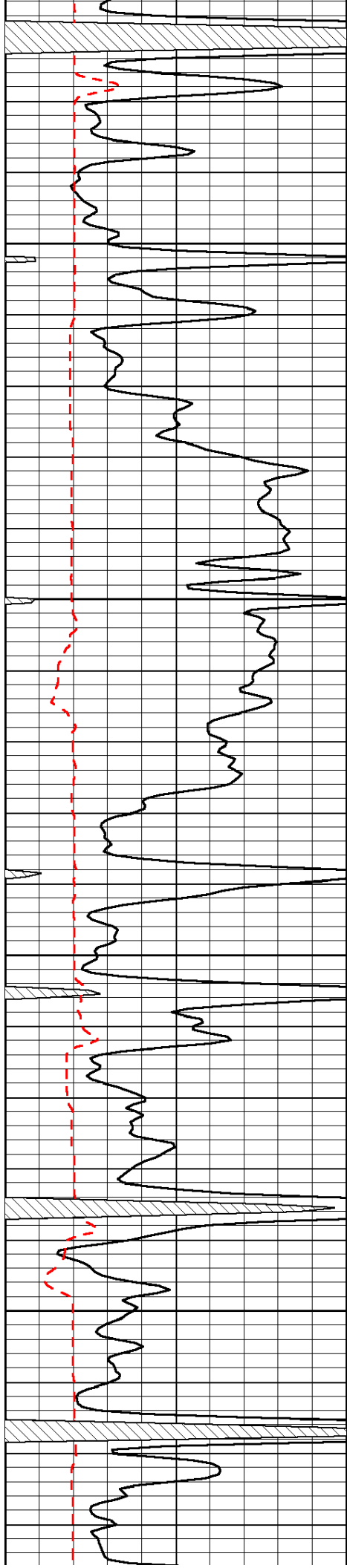
-35

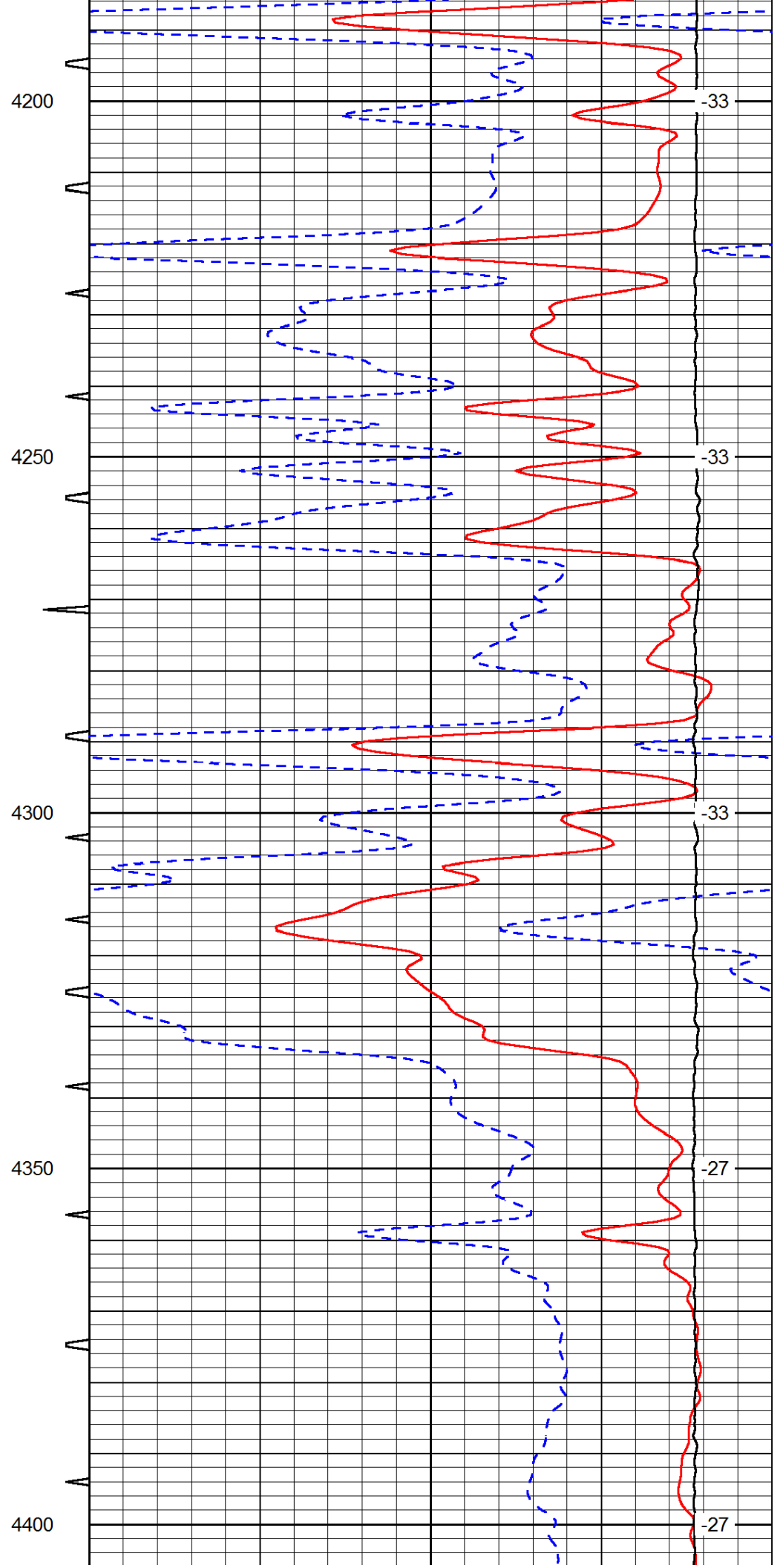
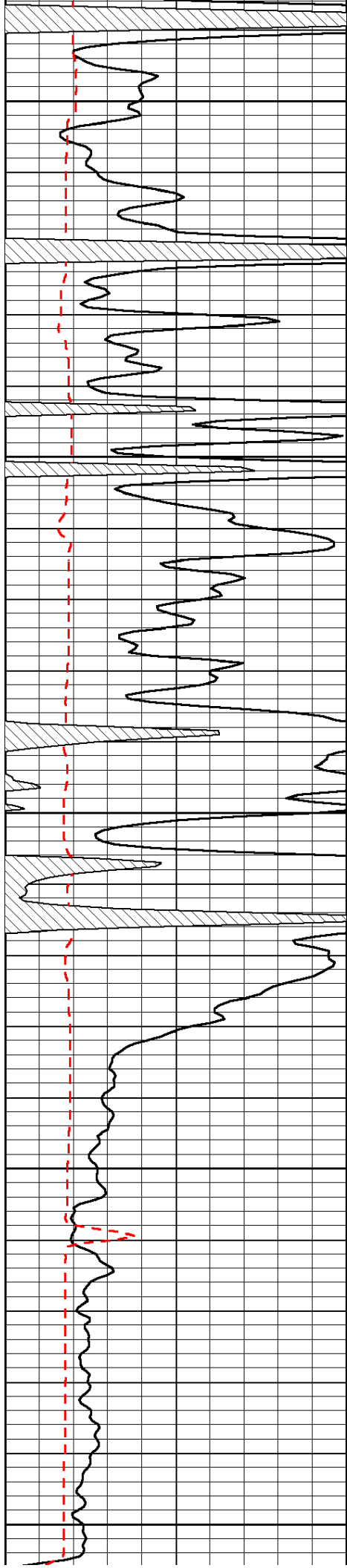
-35

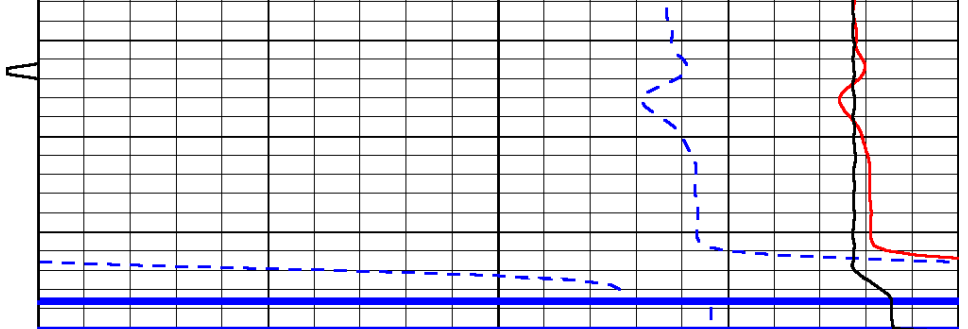
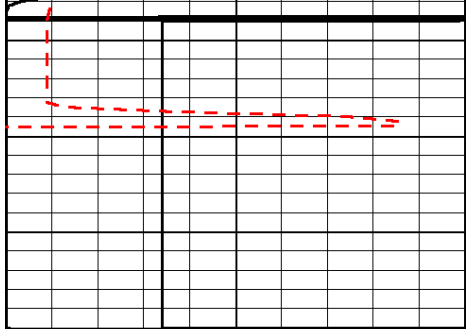
-35

-34

-34







0	Gamma Ray	150	Sonic Int	140	Delta Time (usec/ft)	40
150	Gamma Ray	300	5	0	SPOR	-10
6	Caliper (GAPI)	16		15000	LTEN (lb)	0
						LSPD