



Pioneer Energy Services

Dual Induction Log

15-109-21360-00-00

API No.	Company Black Tea Oil, LLC		Location 665' FNL & 3130' FEL	Other Services CNL/CDL MEL/BHCS
	Well Rose Trust B #1			
	Field N/A	County Logan	State	Kansas
Permanent Datum	Ground Level	Elevation	2682	
Log Measured From	Kelly Bushing	12 Ft. Above Perm. Datum		
Drilling Measured From	Frontkelly Bushing			
Date	10/31/2014			
Run Number	One			
Depth Driller	4430			
Depth Logger	4434			
Bottom Logged Interval	4433			
Top Log Interval	250			
Casing Driller	8.625 @ 264			
Casing Logger	266			
Bit Size	7.875			
Type Fluid in Hole	Chemical			
Salinity, ppm CL	9000			
Density / Viscosity	9.1	58		
pH / Fluid Loss	10.5	7.2		
Source of Sample	Flowline			
Rm @ Meas. Temp	0.25 @ 38			
Rmf @ Meas. Temp	0.19 @ 38			
Rmc @ Meas. Temp	0.34 @ 38			
Source of Rmf / Rmc	Charts			
Rm @ BHT	0.08 @ 120			
Operating Rig Time	5 Hours			
Max Rec. Temp. F	120			
Equipment Number	91			
Location	Hays			
Recorded By	D. Schmidt			
Witnessed By	Richard Thomasson			

<<< Fold Here >>>

All interpretations are opinions based on inferences from electrical or other measurements and we cannot and do not guarantee the accuracy or correctness of any interpretation, and we shall not, except in the case of gross or willful negligence on our part, be liable or responsible for any loss, costs, damages, or expenses incurred or sustained by anyone resulting from any interpretation made by any of our officers, agents or employees. These interpretations are also subject to our general terms and conditions set out in our current Price Schedule.

Comments

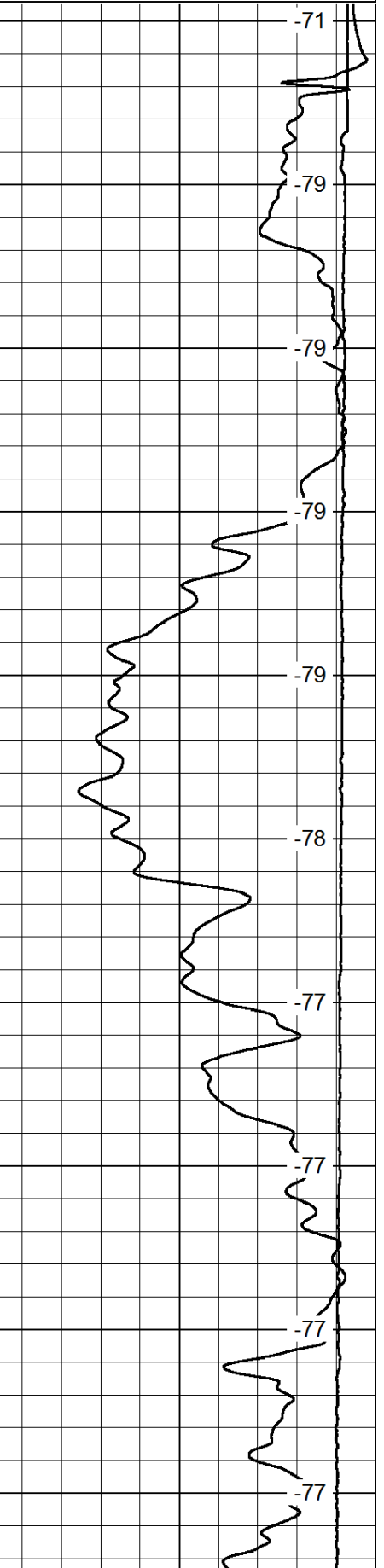
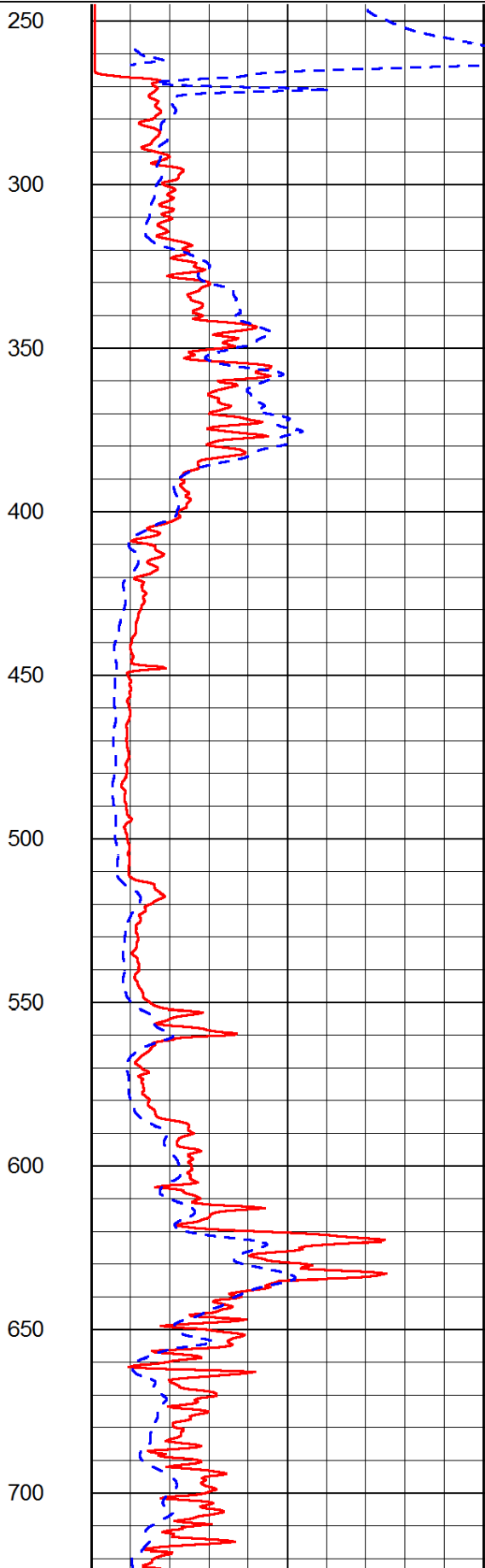
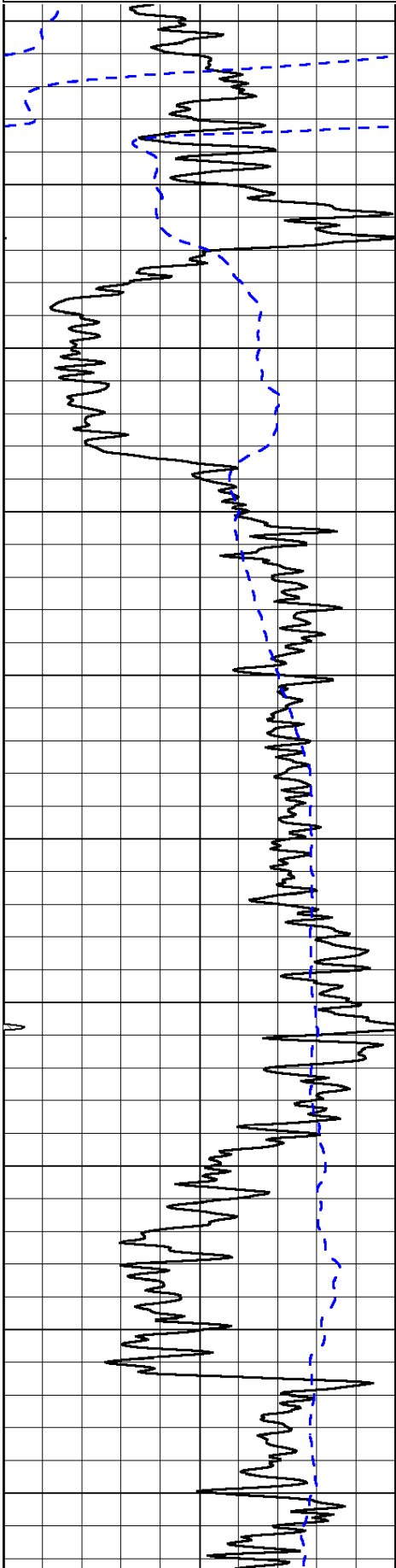
Thank you for using Pioneer Energy Services
www.pioneeres.com
 785 625 3858
 Oakley,
 South to Gold Rd, 2 1/4 West,
 North into about 2 miles

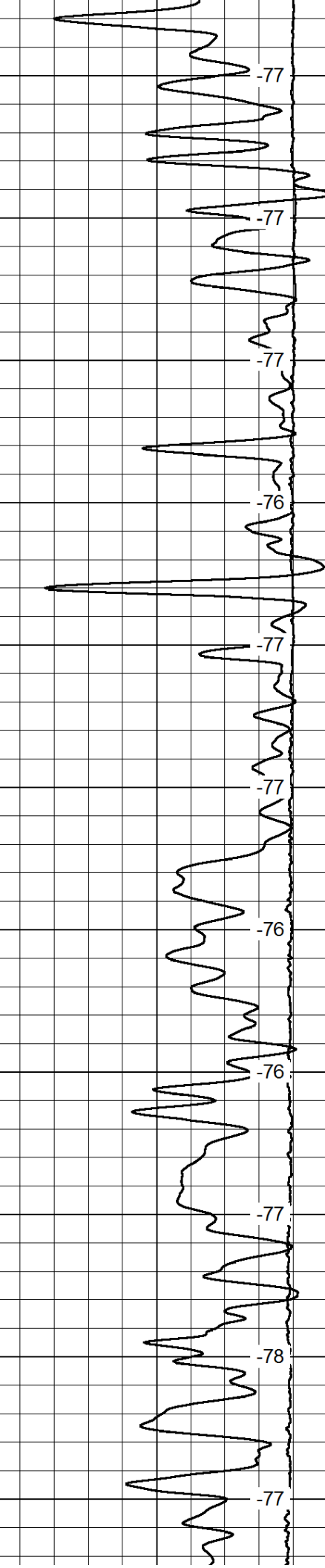
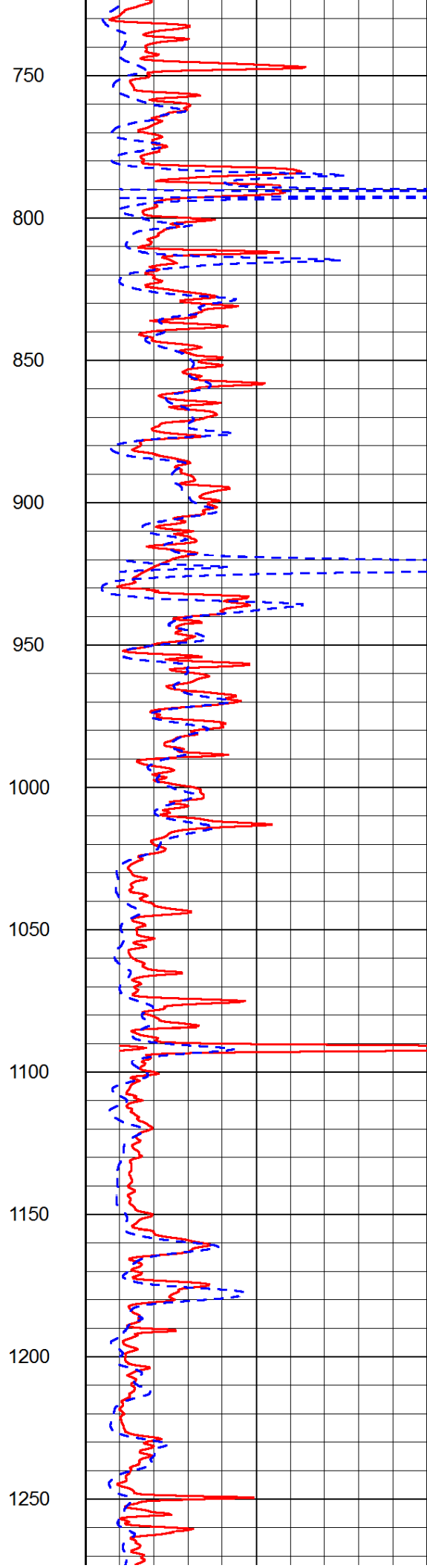
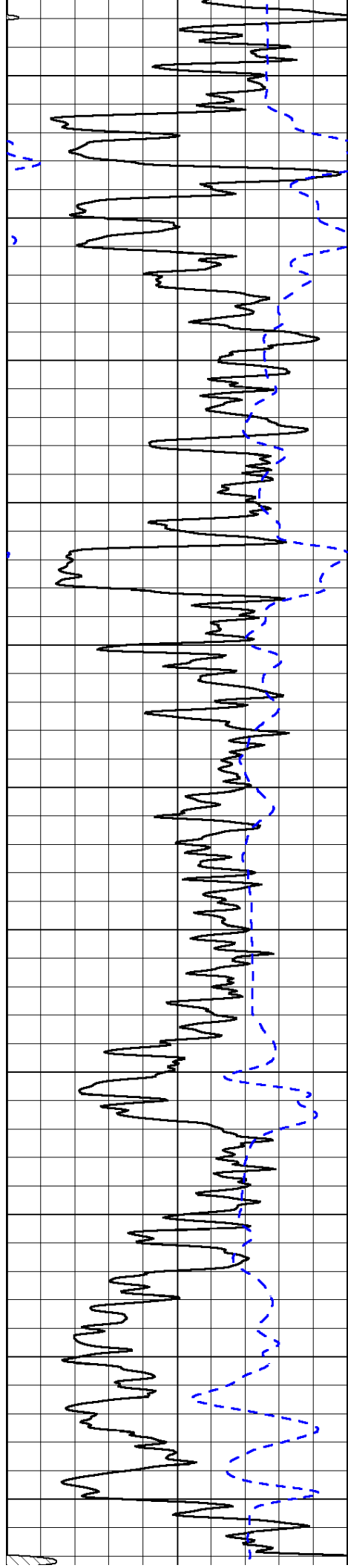
Database File: c:\warrior\data\black tea_rose trust b #1\black tea_rose trust_b_1hd.db
 Dataset Pathname: dil/btstkml
 Presentation Format: dil2in
 Dataset Creation: Fri Oct 31 08:01:25 2014
 Charted by: Depth in Feet scaled 1:600

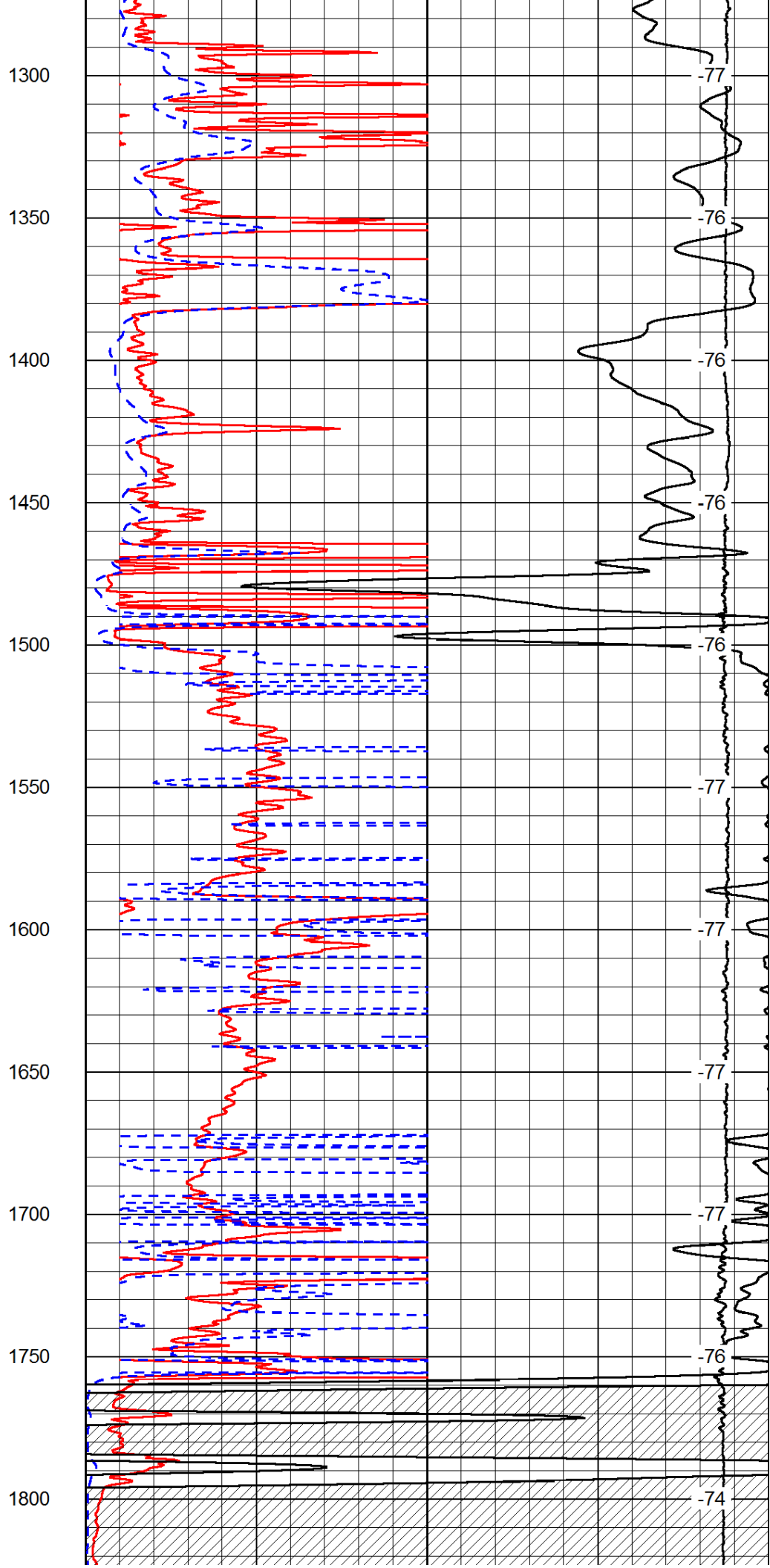
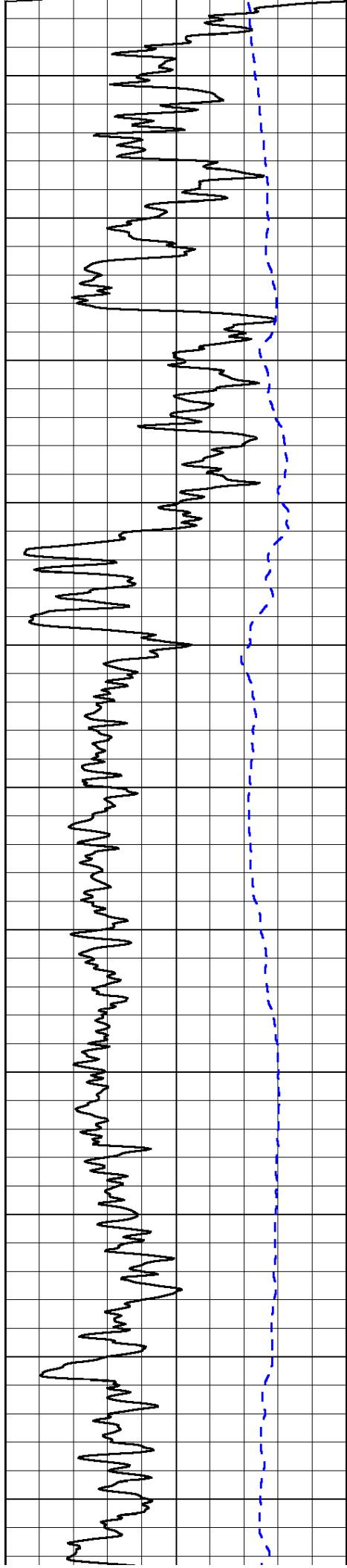
0	Gamma Ray	150
-200	SP (mV)	0

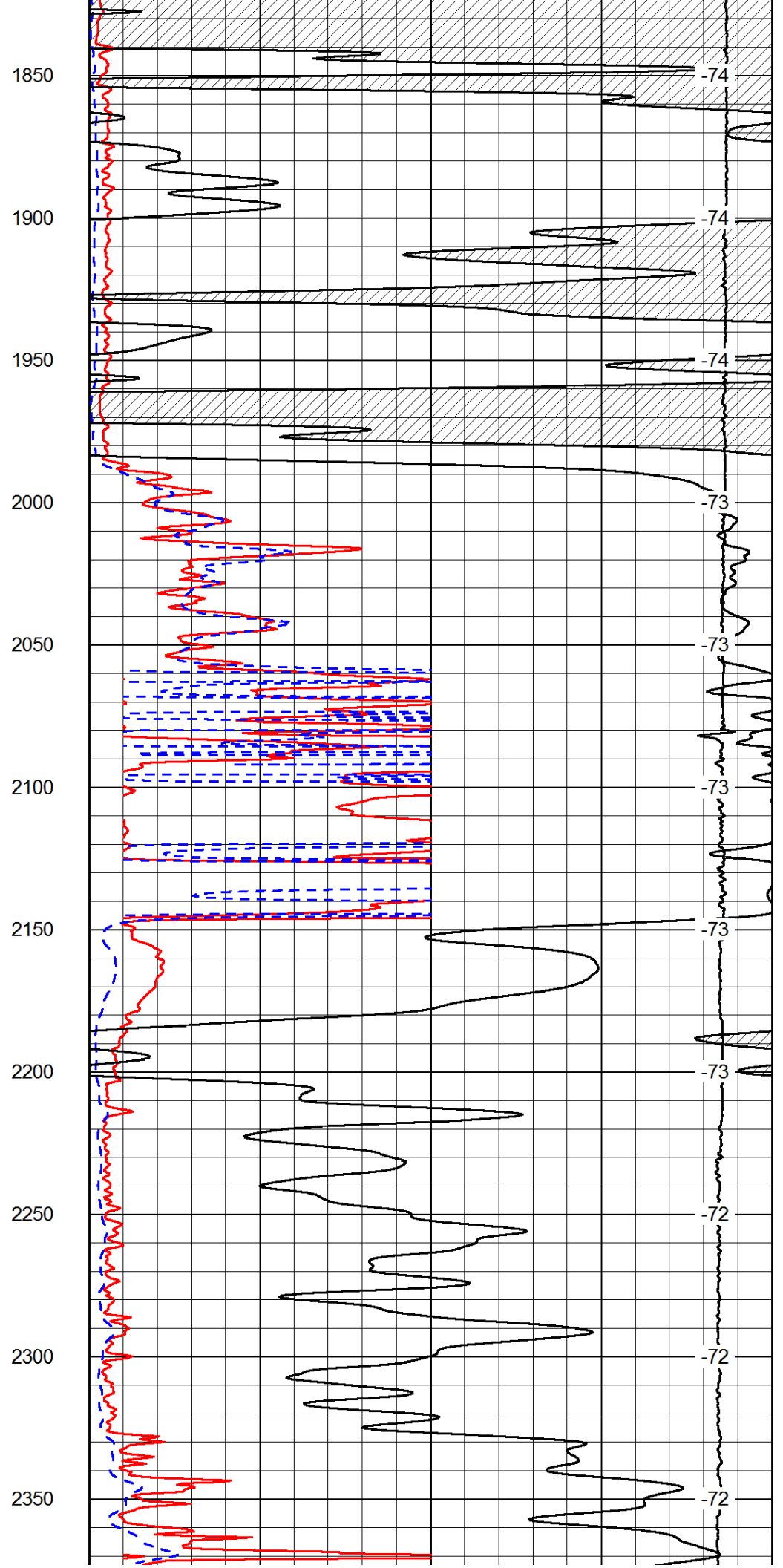
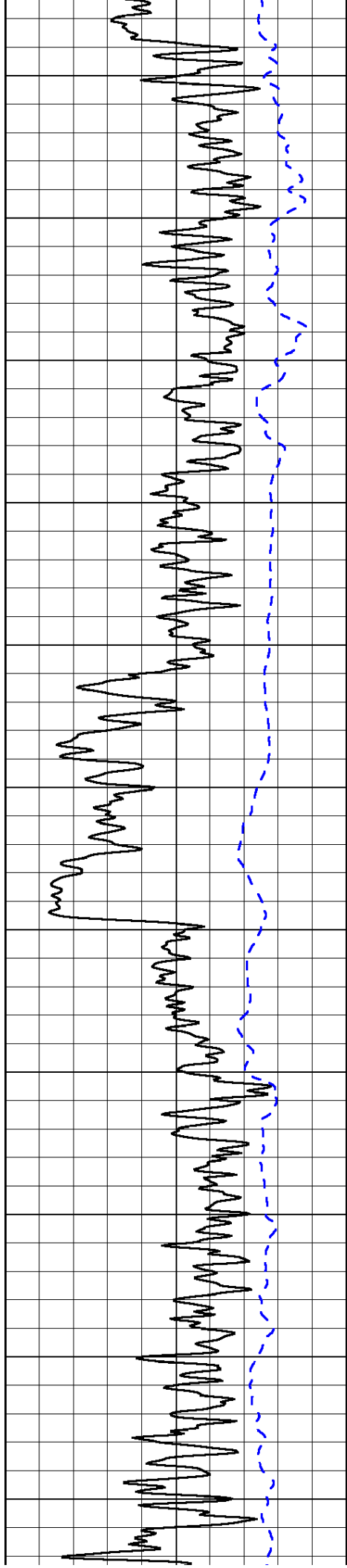
0	Shallow Resistivity	50
0	Deep Resistivity	50
1000	Conductivity	0
15000	Line Tension	0
50	Shallow Resistivity	500
50	Deep Resistivity	500

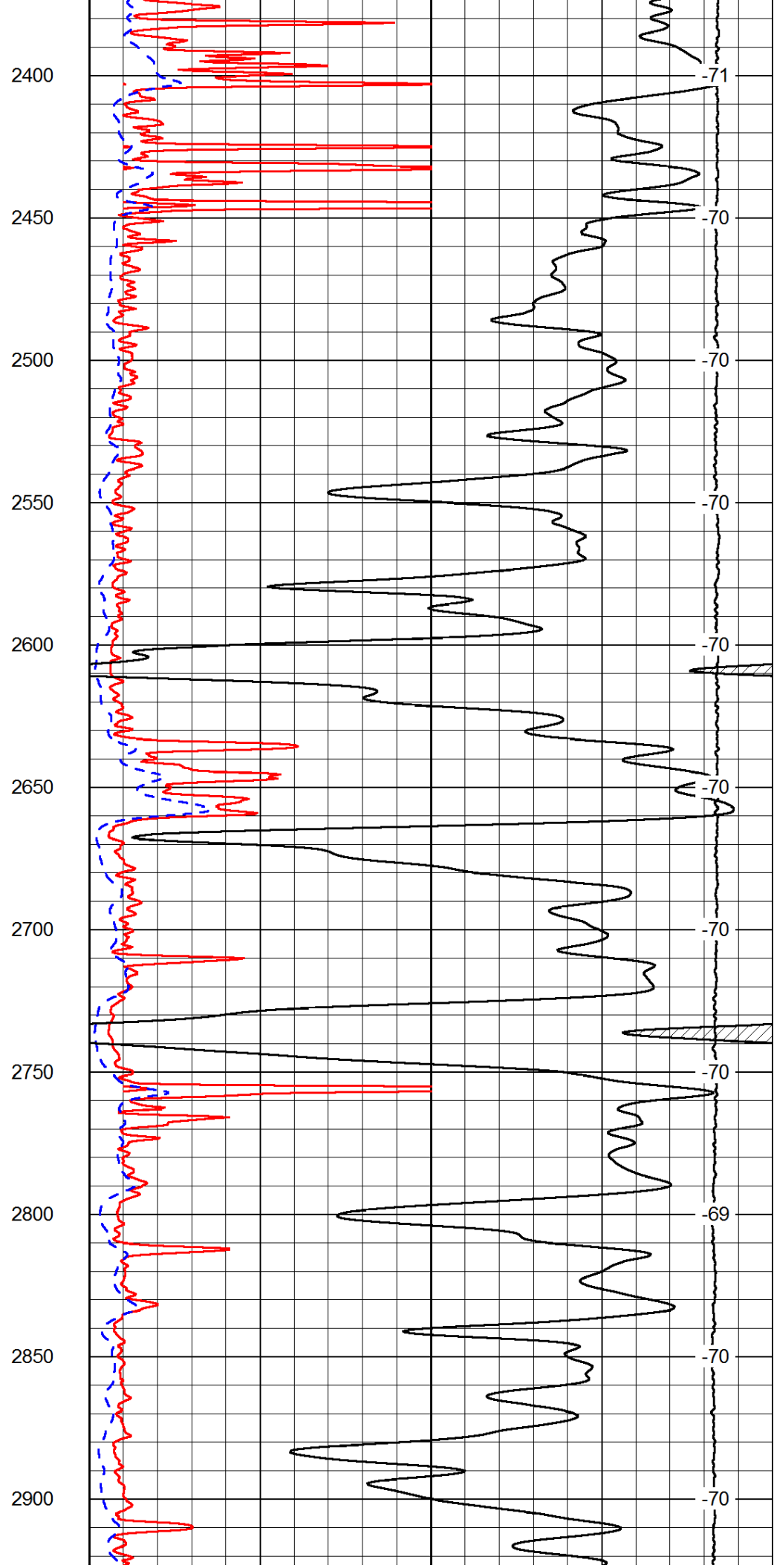
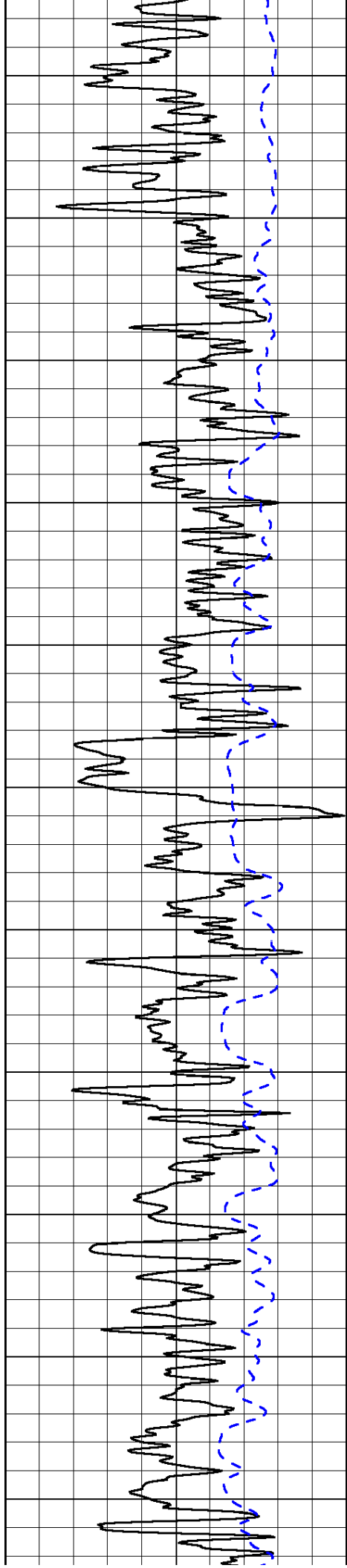
LSPD

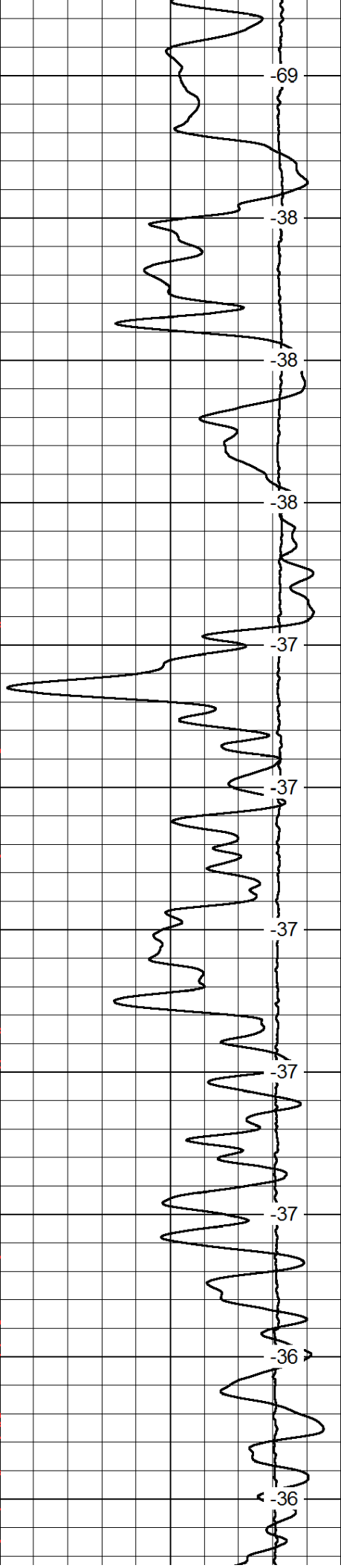
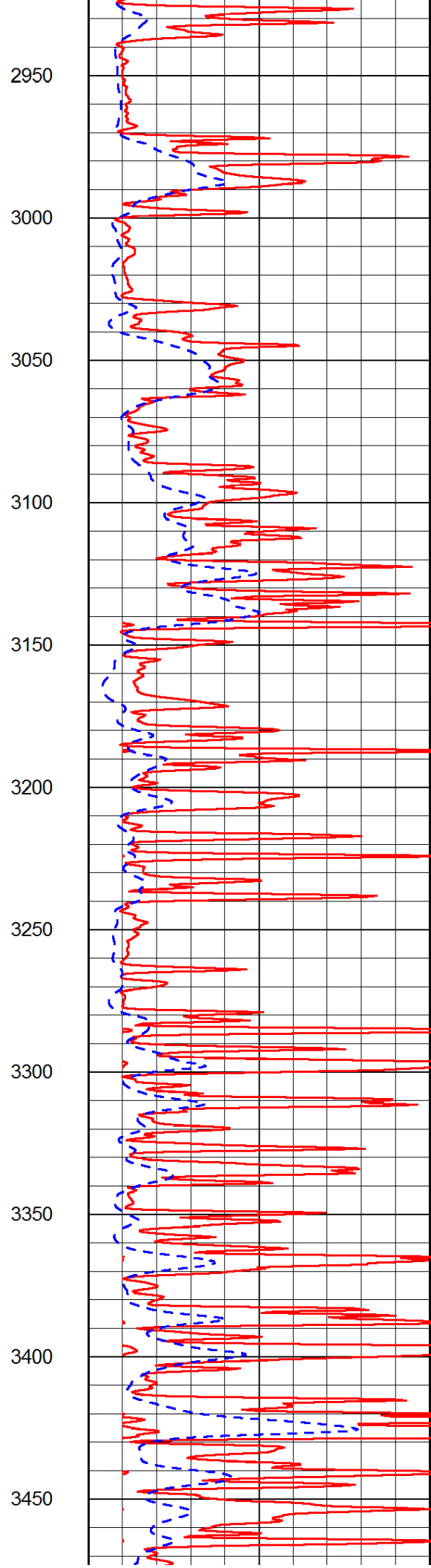
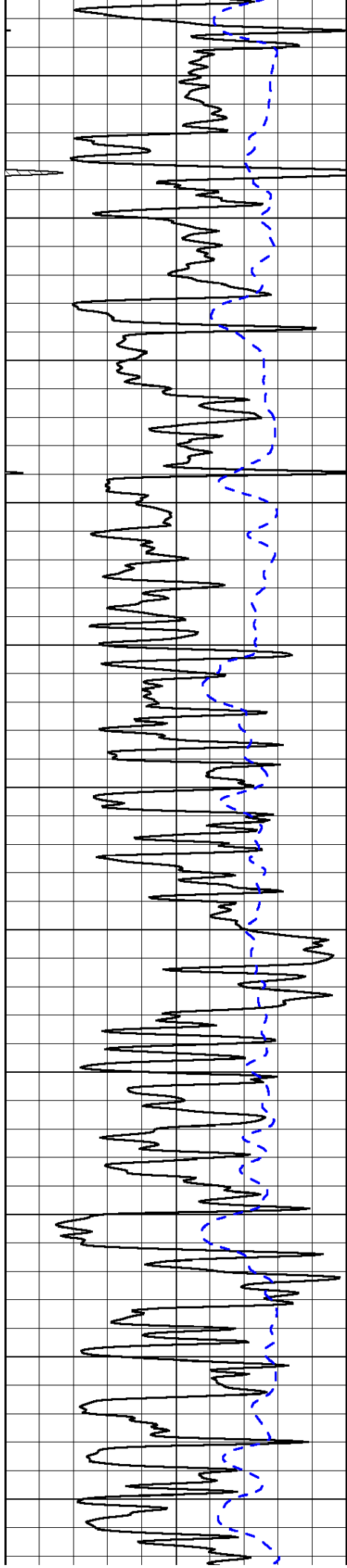


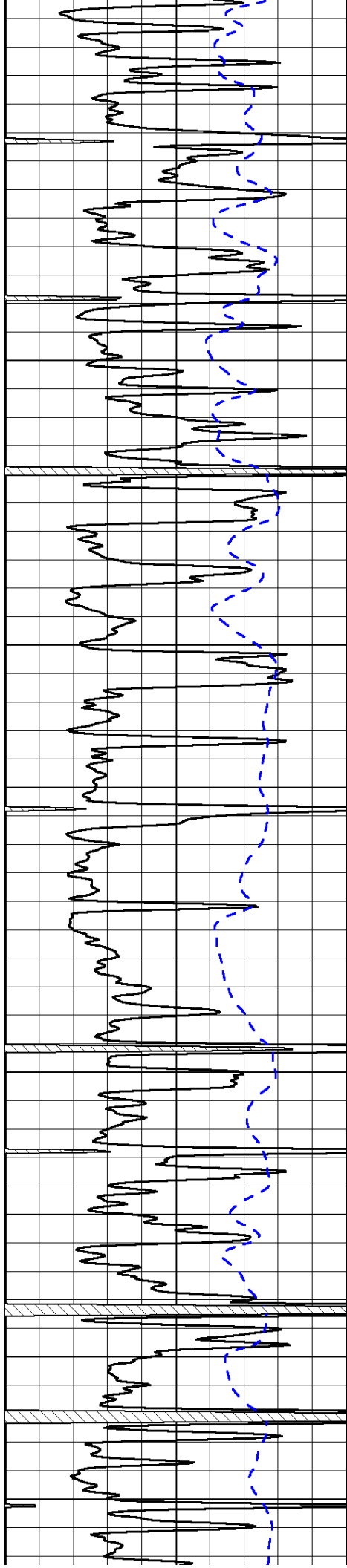




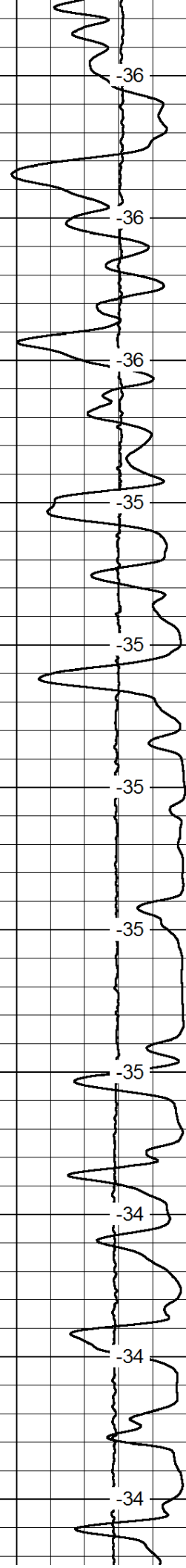
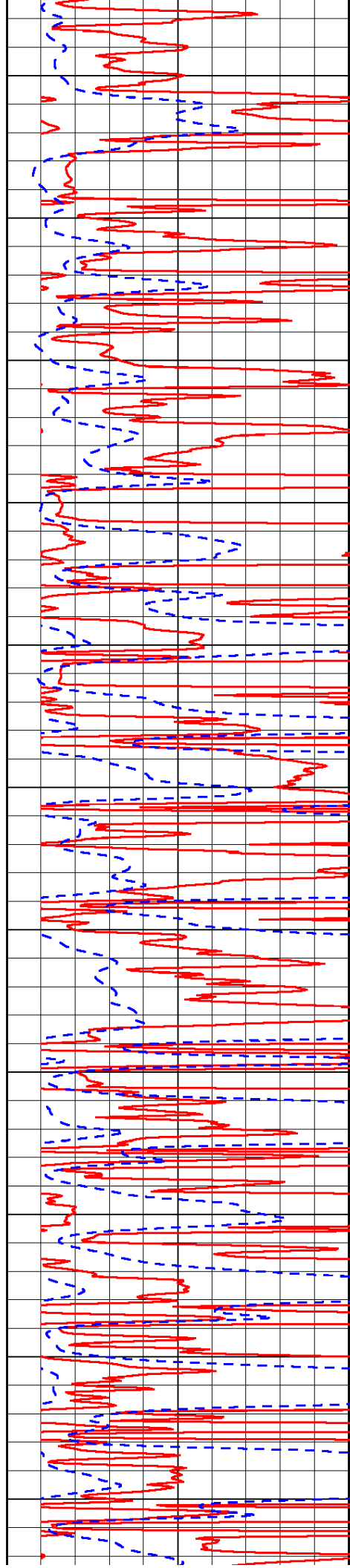


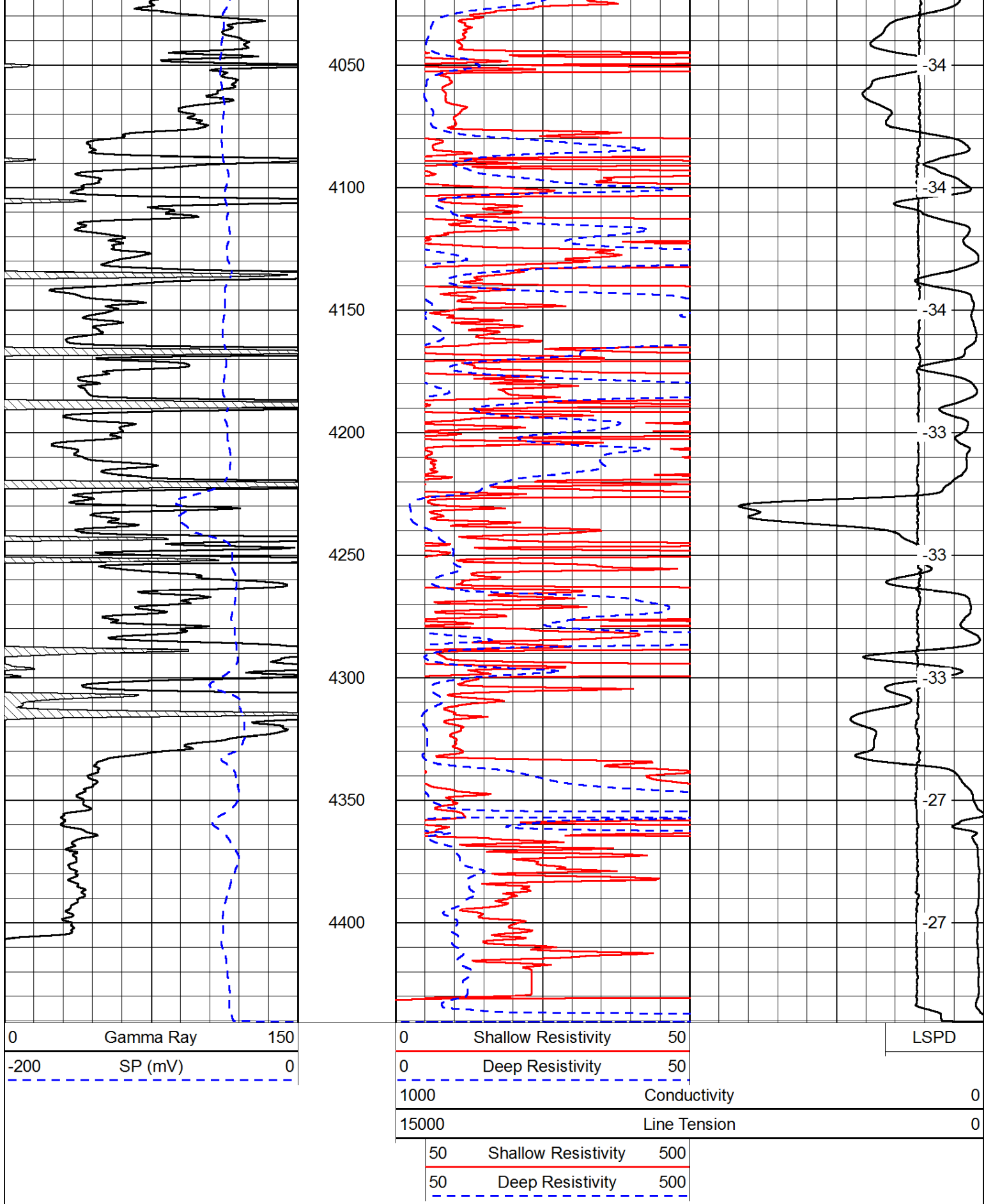






3500
3550
3600
3650
3700
3750
3800
3850
3900
3950
4000



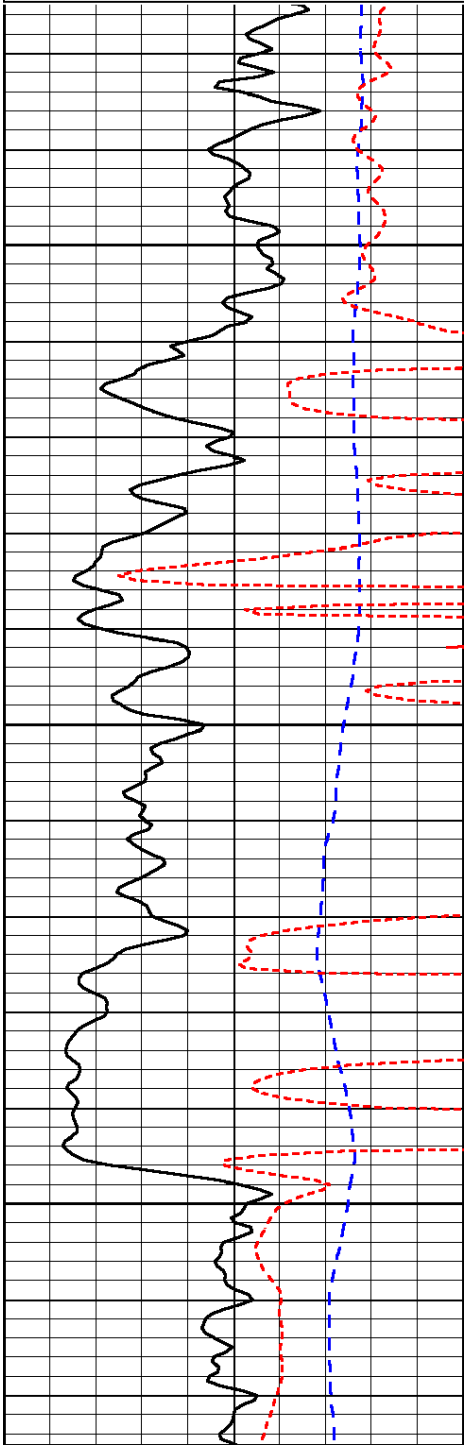


Database File: c:\warrior\data\black tea_rose trust b #1\black tea_rose trust_b_1hd.db
 Dataset Pathname: dil/btstkml
 Presentation Format: dil
 Dataset Creation: Fri Oct 31 08:01:25 2014
 Charted by: Depth in Feet scaled 1:240

0	Gamma Ray	150
-200	SP (mV)	0
-160	RxoRt	40

0.2	Deep Resistivity	2000
0.2	Medium Resistivity	2000
0.2	Shallow Resistivity	2000
15000	Line Tension	0

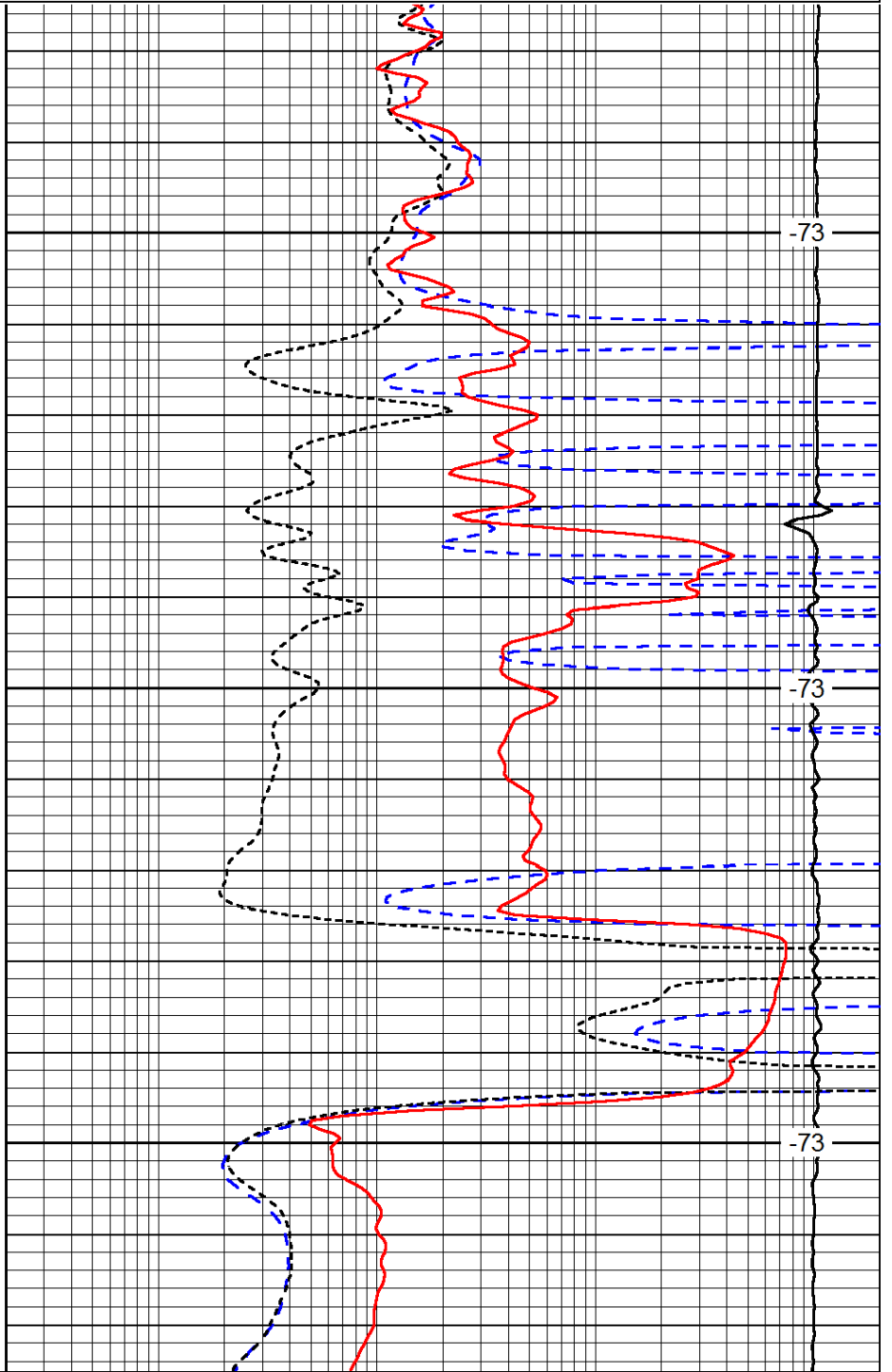
LSPD



2050

2100

2150



-73

-73

-73

0	Gamma Ray	150
-200	SP (mV)	0
-160	RxoRt	40

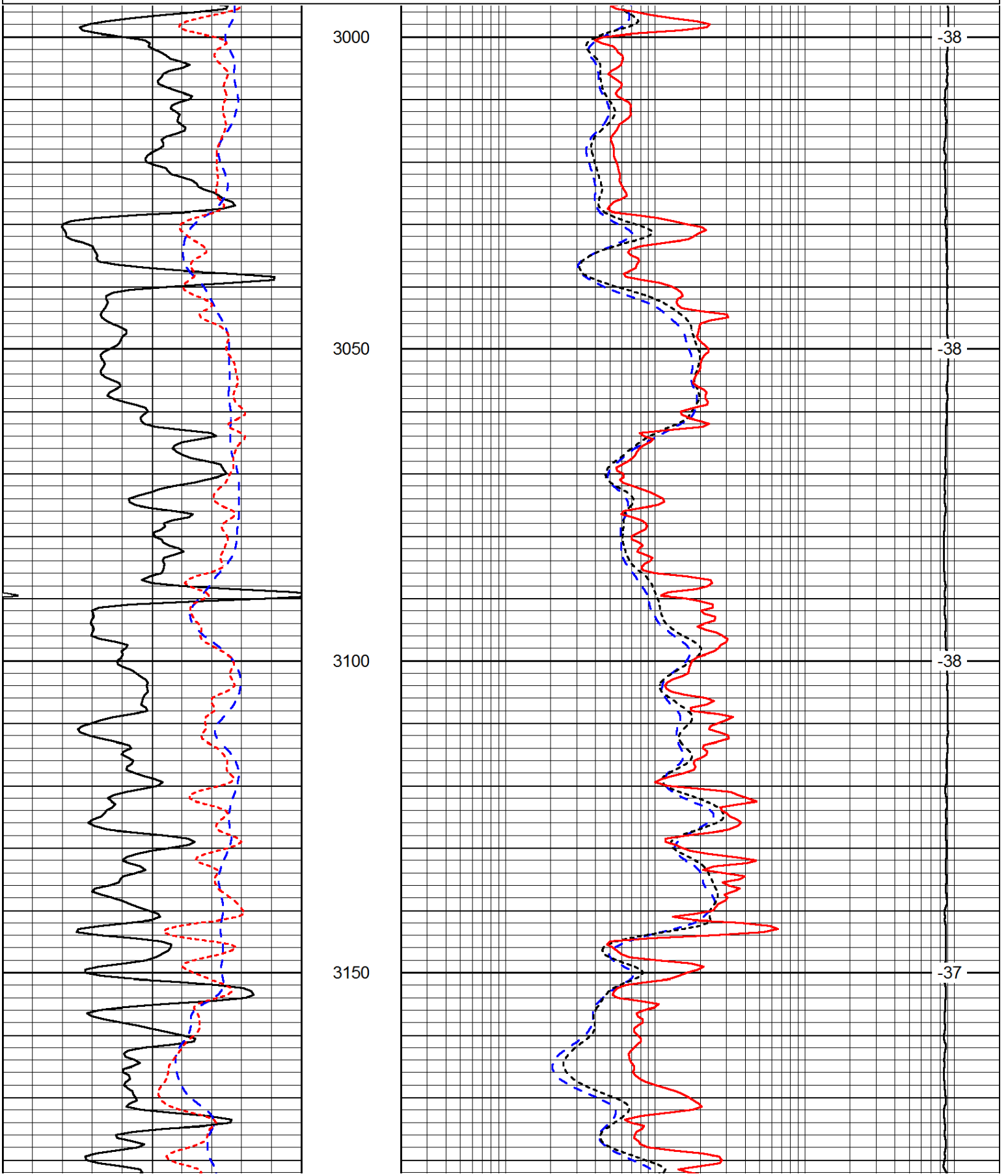
0.2	Deep Resistivity	2000
0.2	Medium Resistivity	2000
0.2	Shallow Resistivity	2000
15000	Line Tension	0

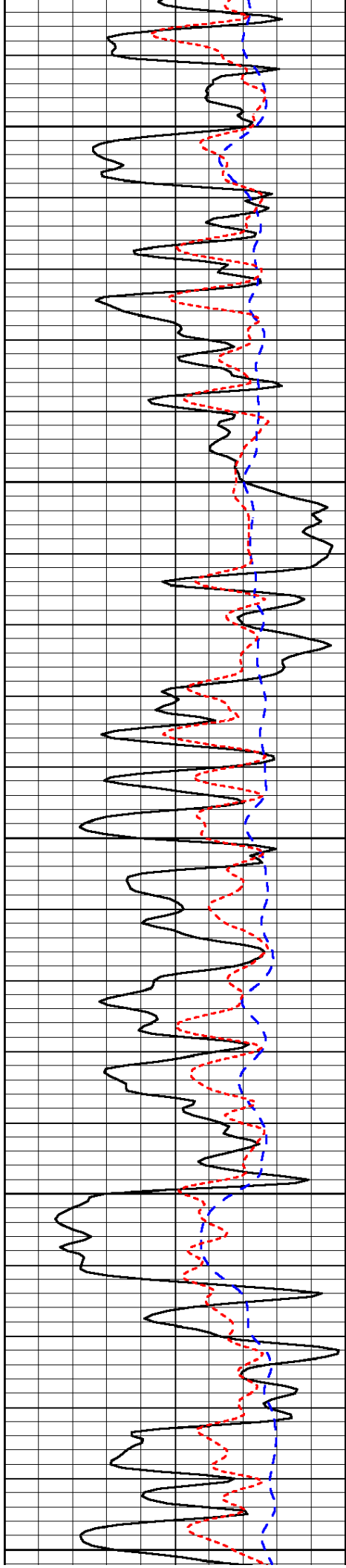
LSPD

0	Gamma Ray	150
-200	SP (mV)	0
-160	RxoRt	40

0.2	Deep Resistivity	2000
0.2	Medium Resistivity	2000
0.2	Shallow Resistivity	2000
15000	Line Tension	0

LSPD





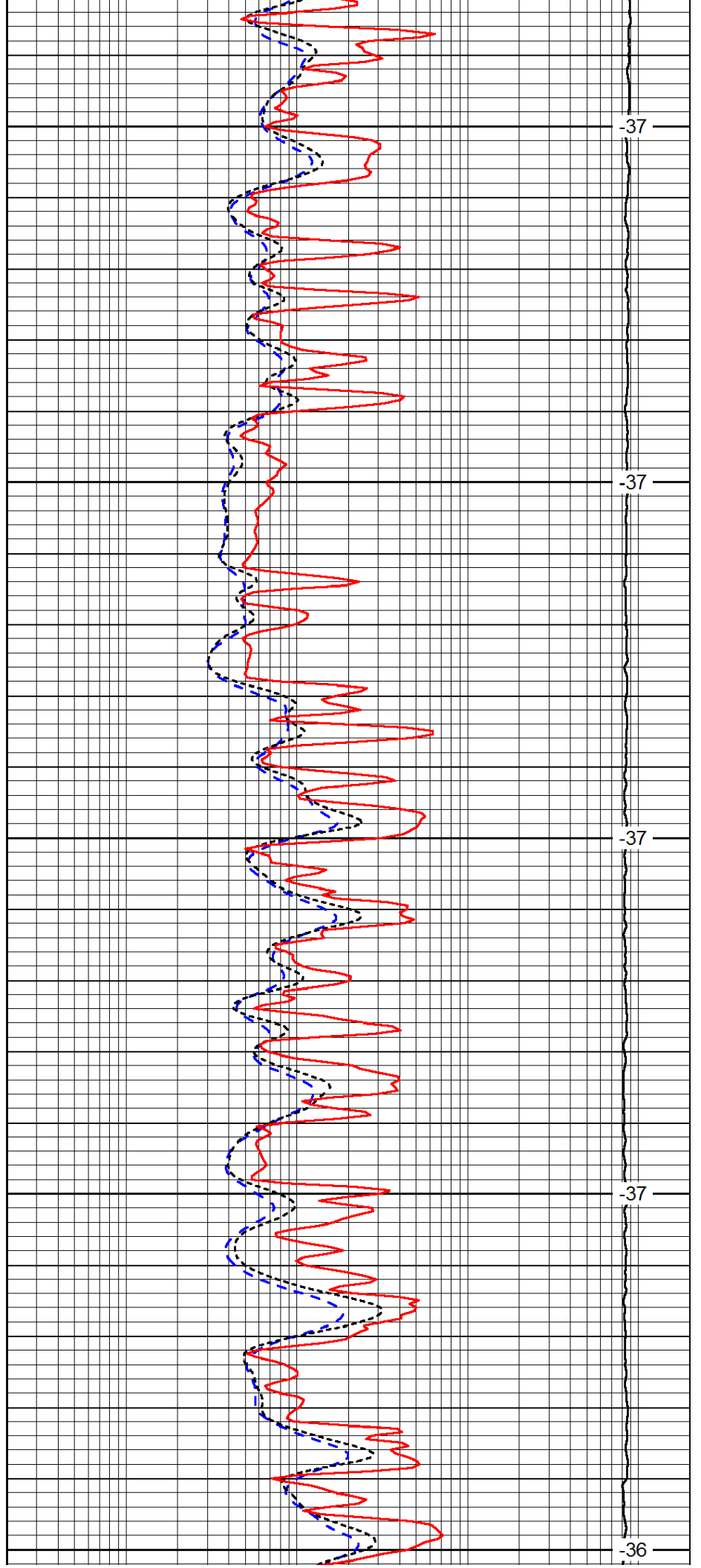
3200

3250

3300

3350

3400



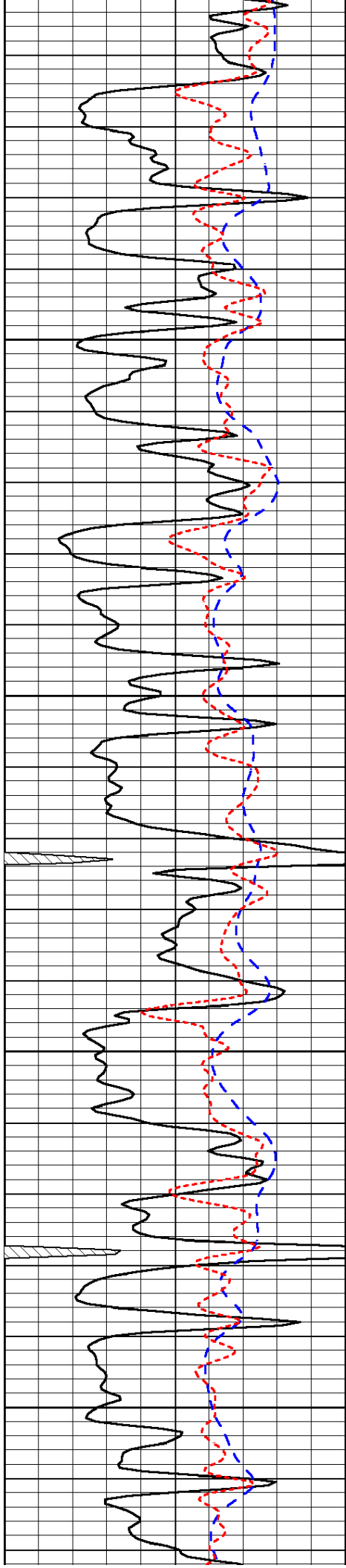
-37

-37

-37

-37

-36

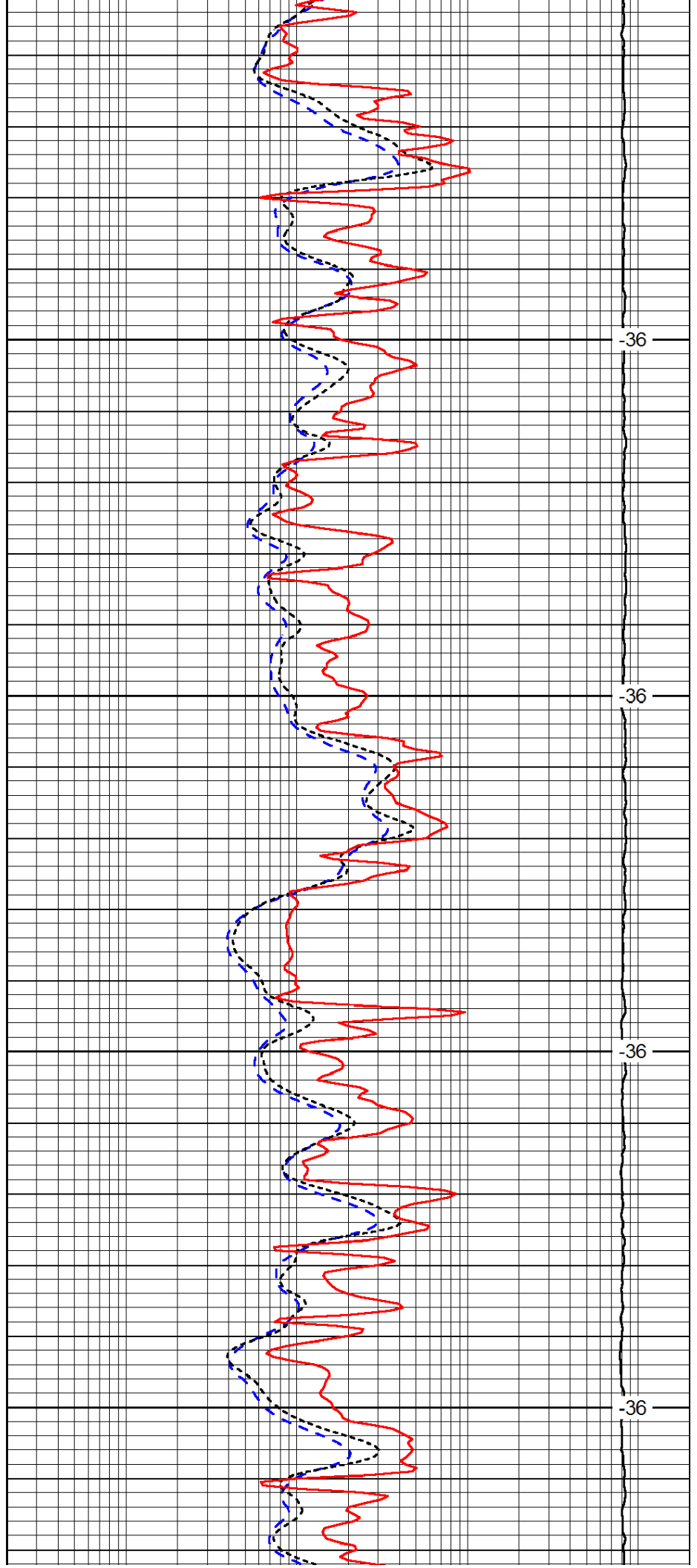


3450

3500

3550

3600

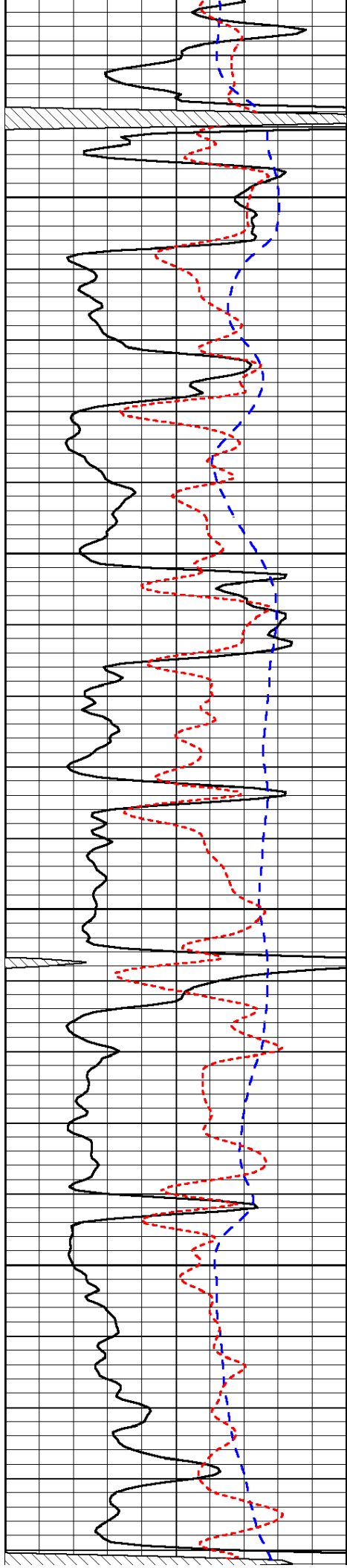


-36

-36

-36

-36

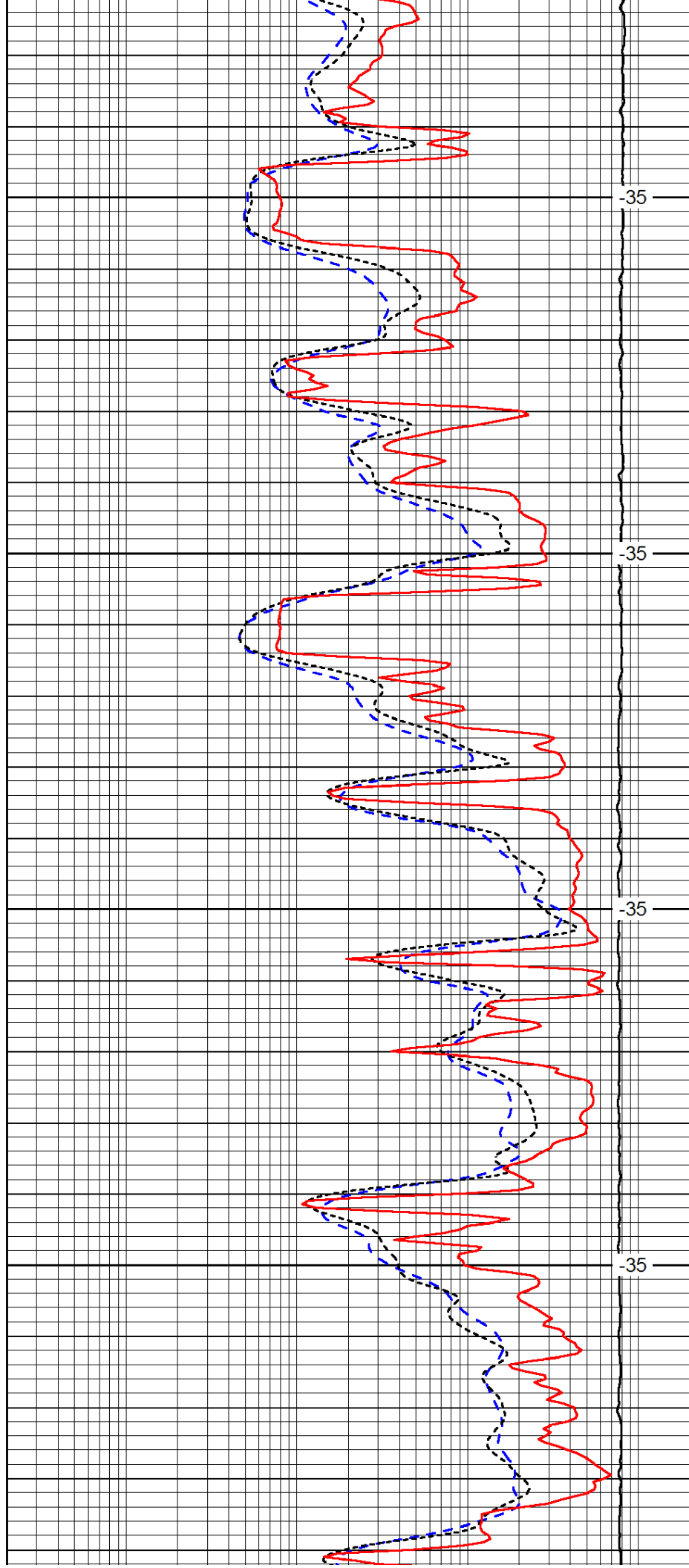


3650

3700

3750

3800

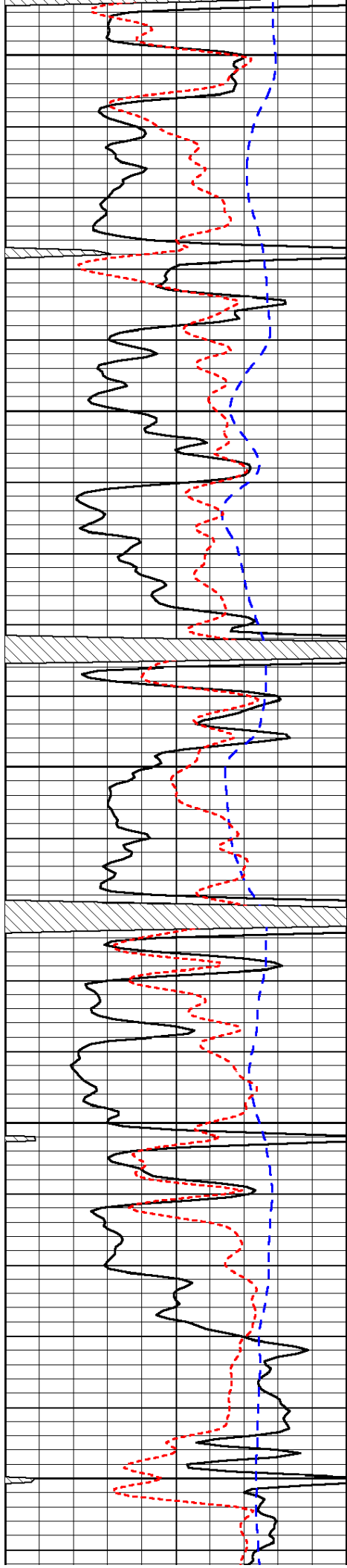


-35

-35

-35

-35



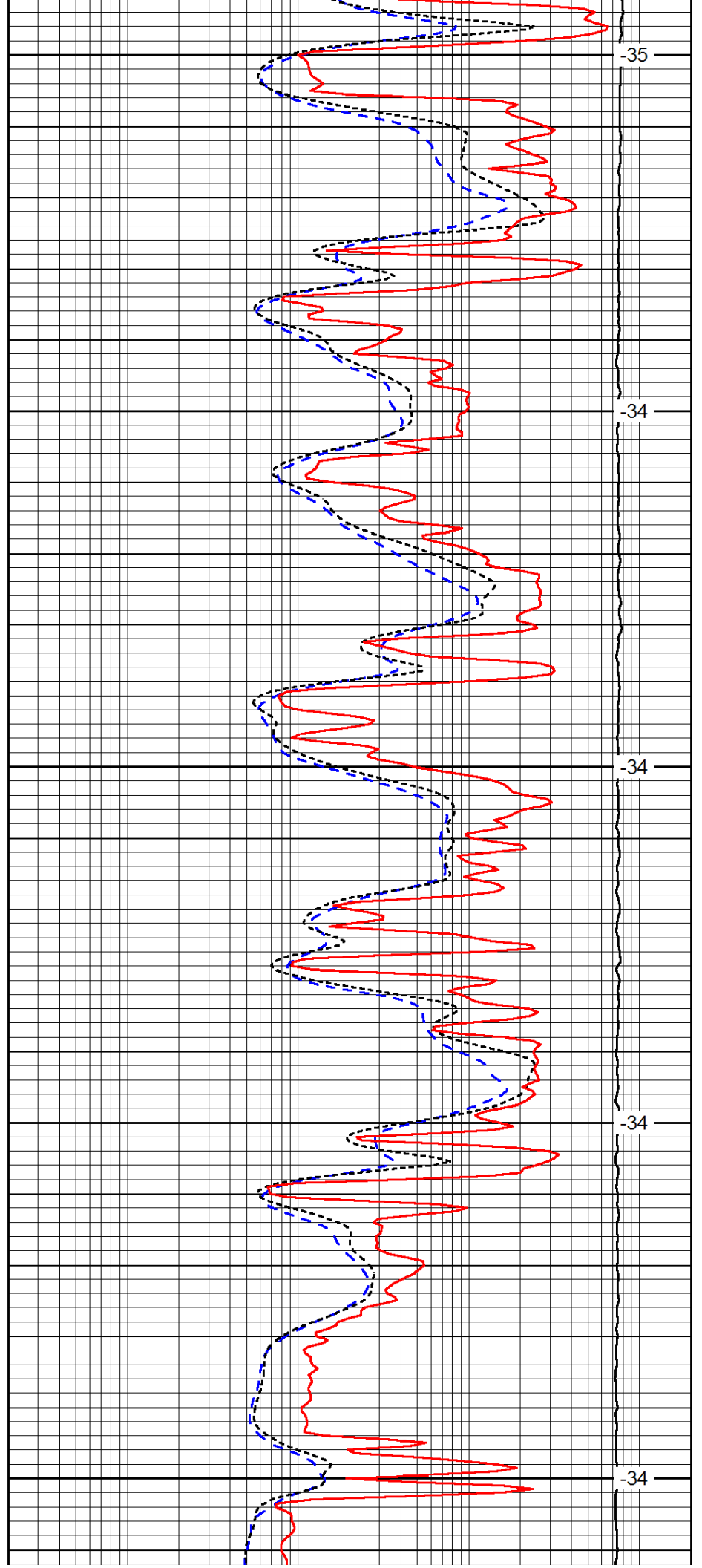
3850

3900

3950

4000

4050



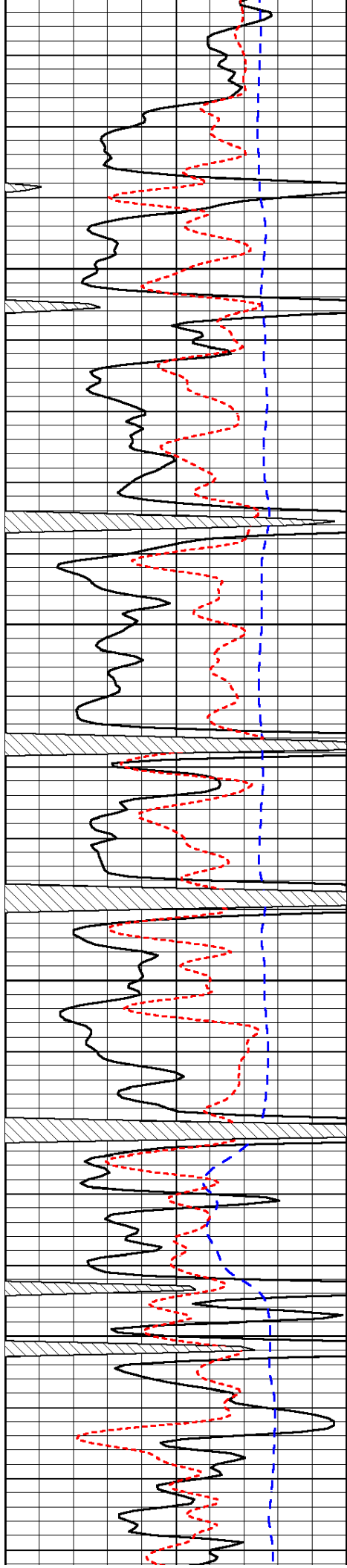
35

34

34

34

34

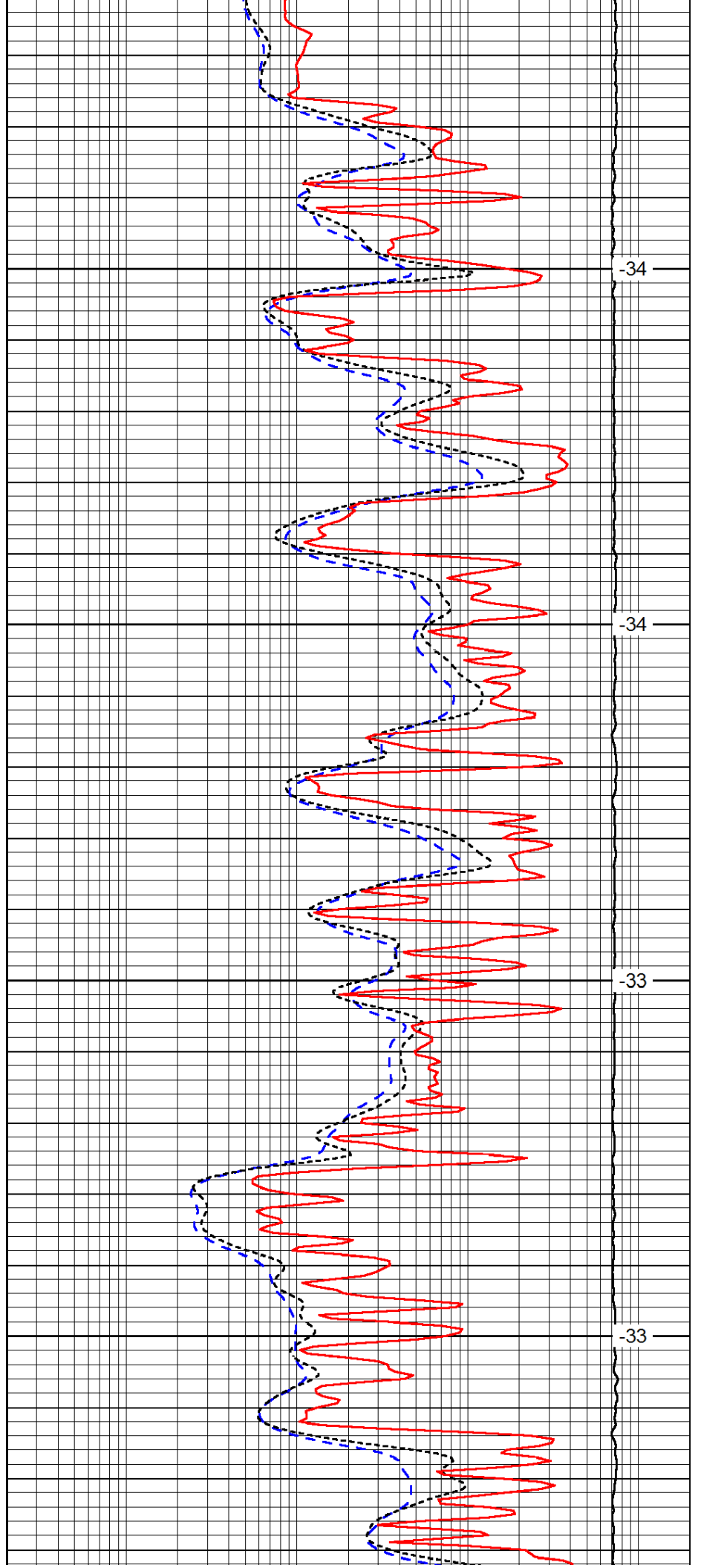


4100

4150

4200

4250

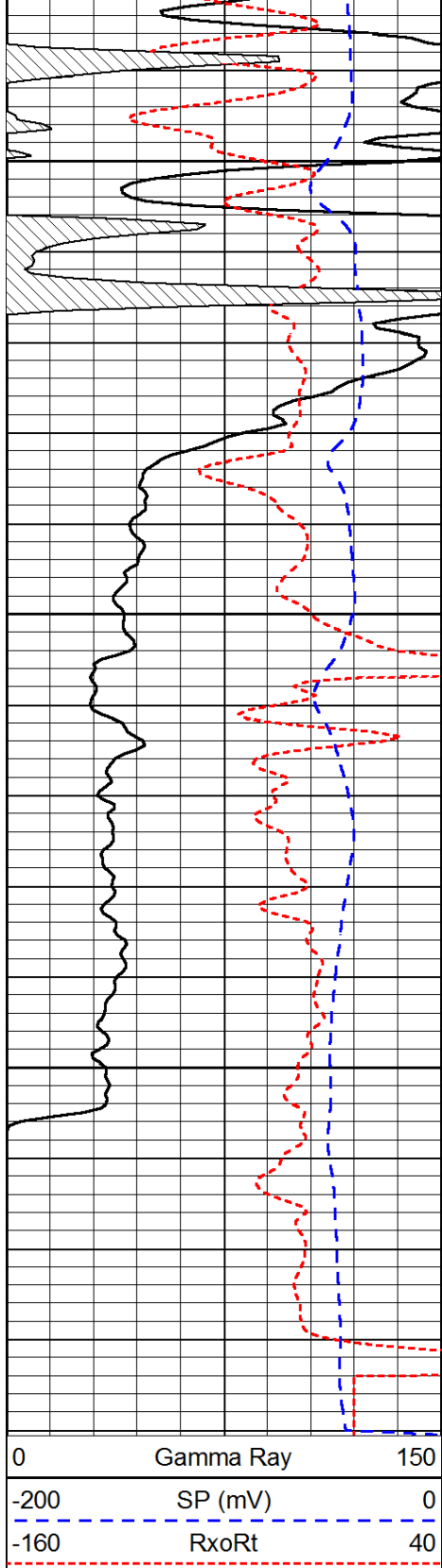


34

34

33

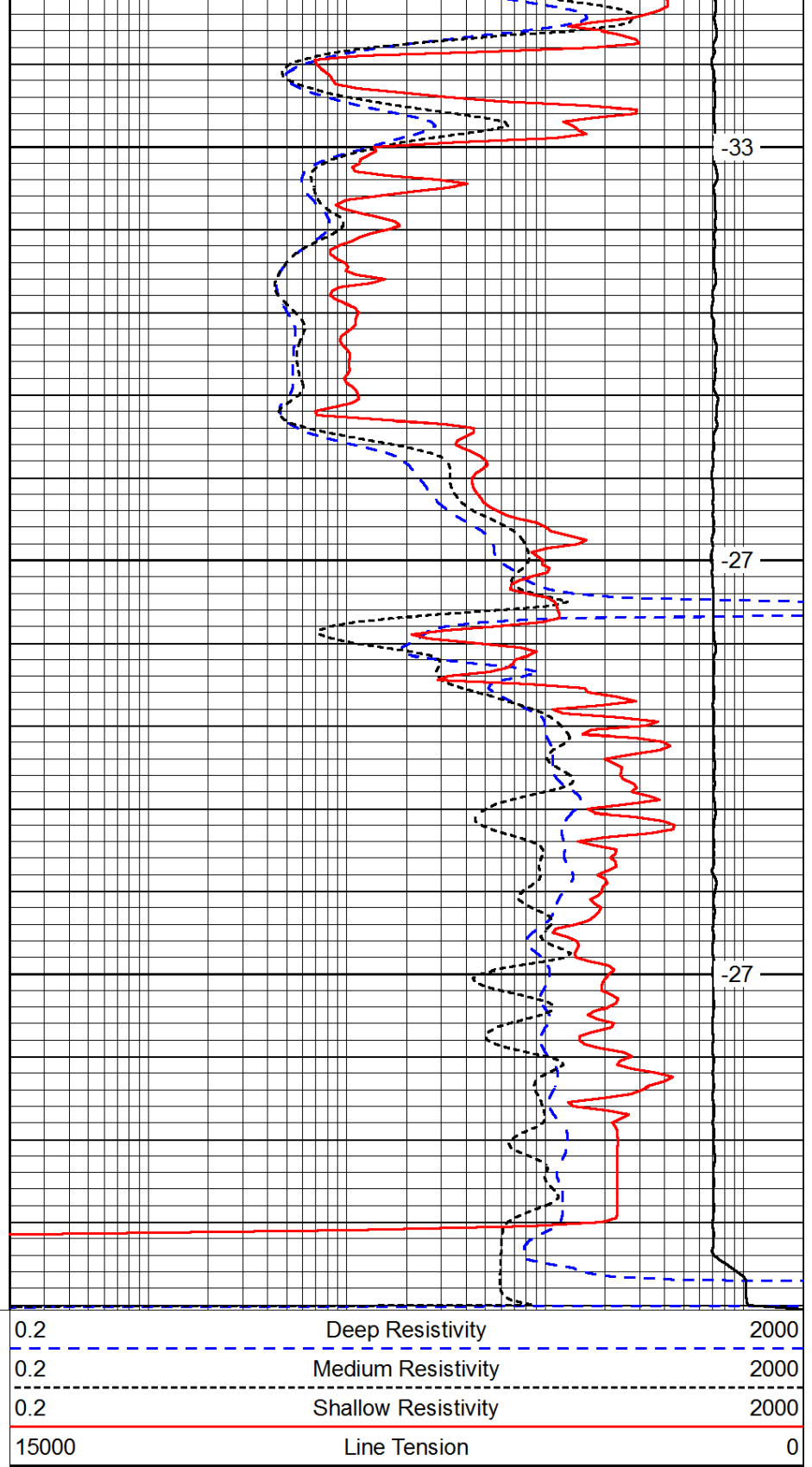
33



4300

4350

4400



-33

-27

-27

LSPD