



Pioneer Energy Services

Dual Induction Log

| | | |
|------------------------|----------------------|--|
| API No. | 15-109-21396-00-00 | |
| Company | Black Tea Oil, LLC | |
| Well | Younkin C #1 | |
| Field | N/A | |
| County | Logan | State |
| | | Kansas |
| Location | 1175' FSL & 750' FWL | |
| Sec: 26 | Twp: 14S | Rge: 34W |
| Permanent Datum | Ground Level | Elevation 2984 |
| Log Measured From | Kelly Bushing | 9 Ft. Above Perm. Datum |
| Drilling Measured From | Kelly Bushing | |
| | | Other Services CNL/CDL MEL/BHCS |
| | | Elevation K.B. 2993 D.F. 2984 G.L. 2984 |

| | |
|------------------------|--------------|
| Date | 3/12/2015 |
| Run Number | One |
| Depth Driller | 4680 |
| Depth Logger | 4678 |
| Bottom Logged Interval | 4677 |
| Top Log Interval | 250 |
| Casing Driller | 8.625 @ 259 |
| Casing Logger | 260 |
| Bit Size | 7.875 |
| Type Fluid in Hole | Chemical |
| Salinity, ppm CL | 14,000 |
| Density / Viscosity | 9.0 58 |
| pH / Fluid Loss | 10.0 8.0 |
| Source of Sample | Flowline |
| Rm @ Meas. Temp | 0.25 @ 78 |
| Rmf @ Meas. Temp | 0.19 @ 78 |
| Rmc @ Meas. Temp | 0.34 @ 78 |
| Source of Rmf / Rmc | Charts |
| Rm @ BHT | 0.16 @ 123 |
| Operating Rig Time | 5 Hours |
| Max Rec. Temp. F | 123 |
| Equipment Number | 15 |
| Location | Hays |
| Recorded By | D.Kerr |
| Witnessed By | Kevin Bailey |

<<< Fold Here >>>

All interpretations are opinions based on inferences from electrical or other measurements and we cannot and do not guarantee the accuracy or correctness of any interpretation, and we shall not, except in the case of gross or willful negligence on our part, be liable or responsible for any loss, costs, damages, or expenses incurred or sustained by anyone resulting from any interpretation made by any of our officers, agents or employees. These interpretations are also subject to our general terms and conditions set out in our current Price Schedule.

Comments

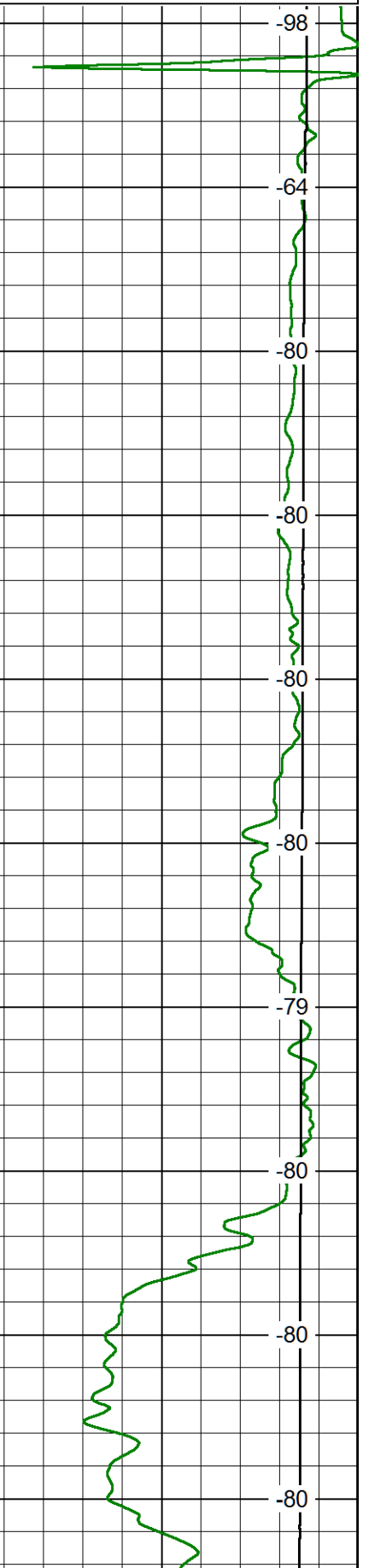
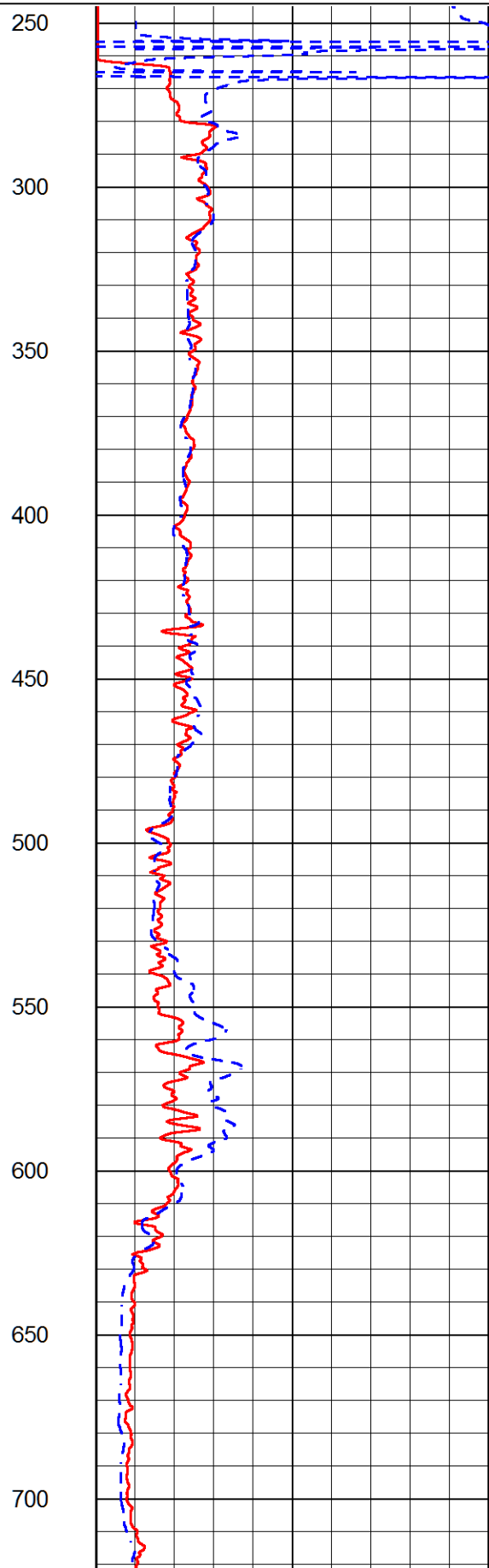
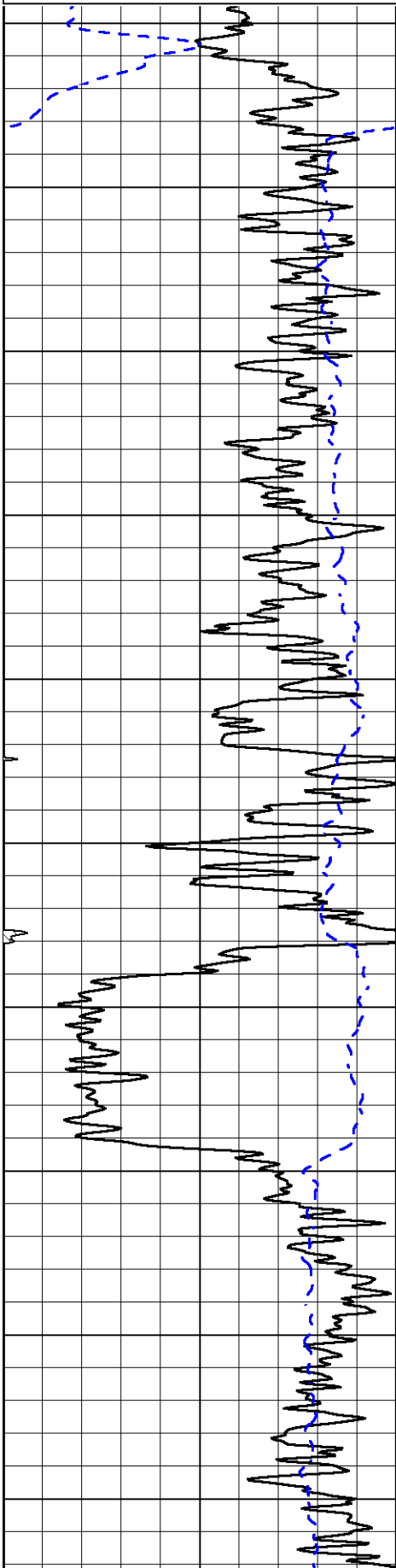
Thank you for using Pioneer Energy Services
785.625.3858

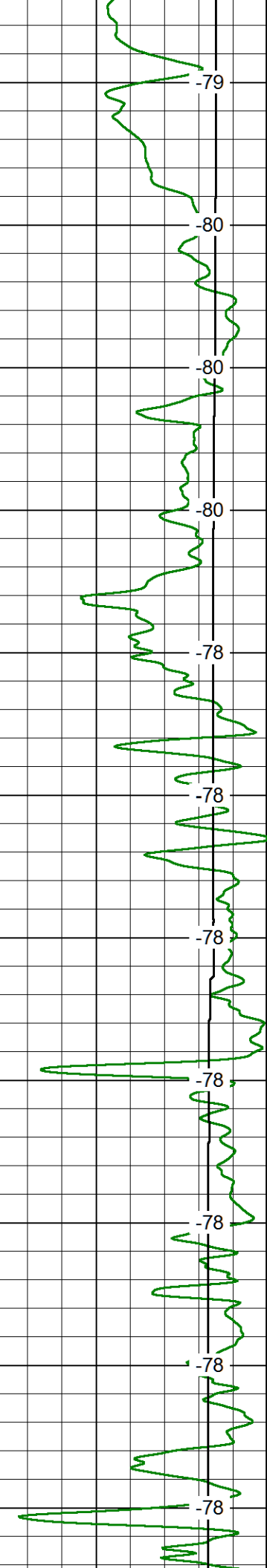
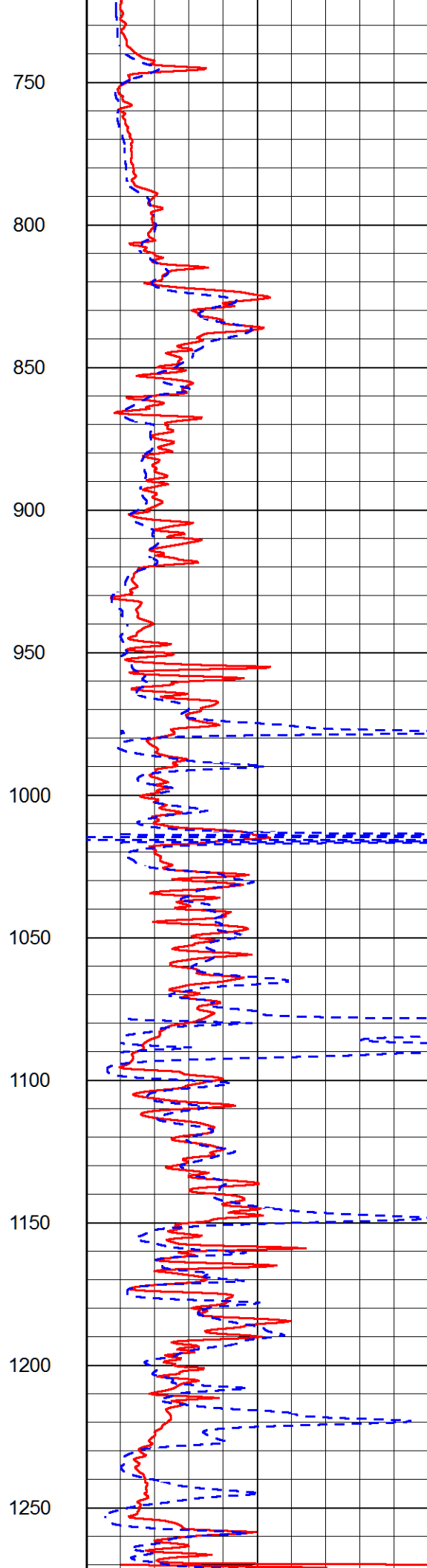
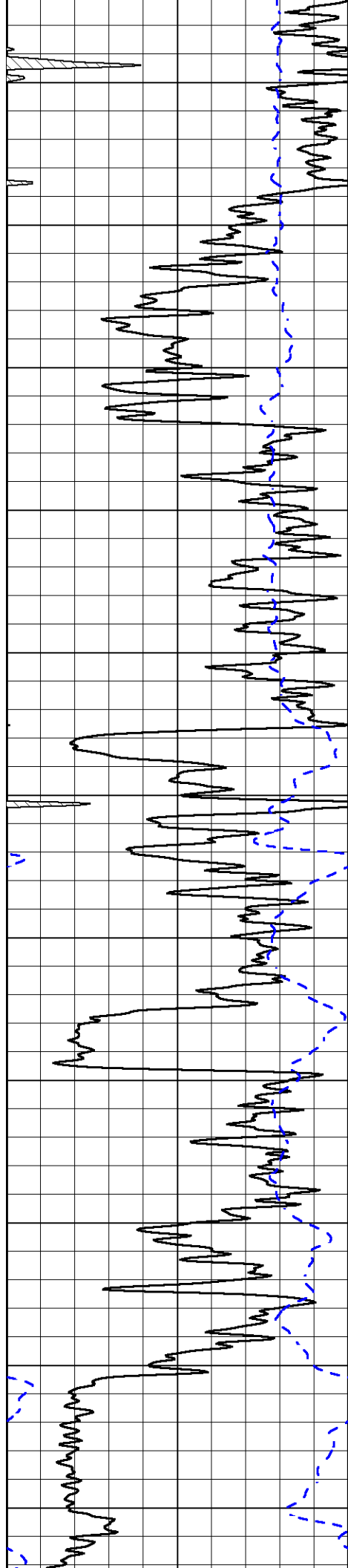
Monument KS, 22 South to Indian RD,
West to 320 RD, 1 1/4 South, East and North Into

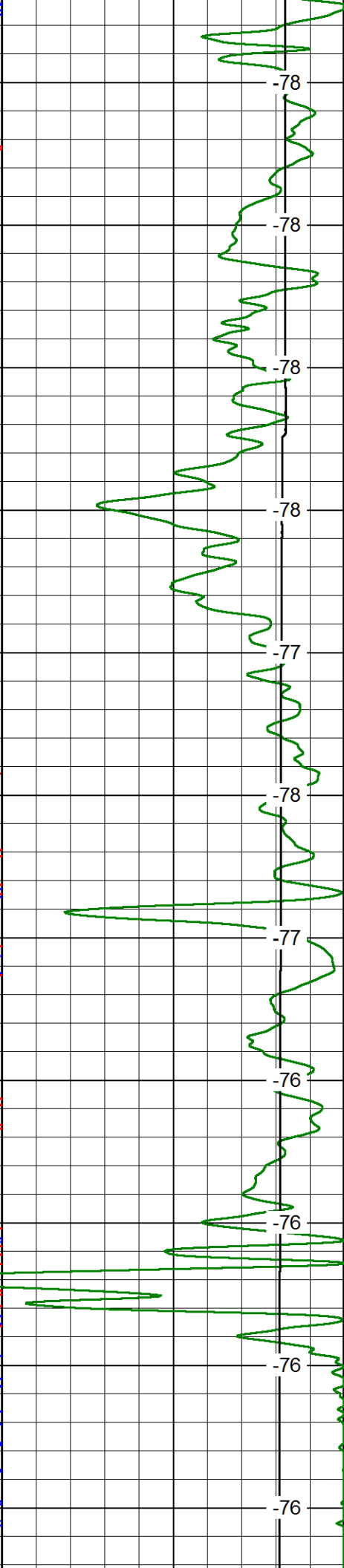
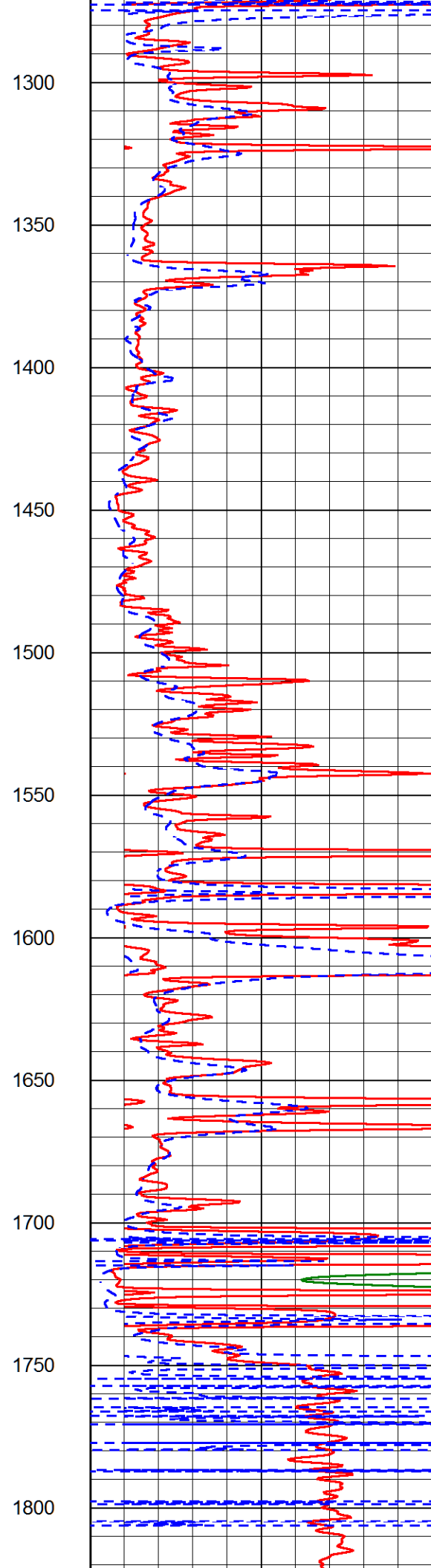
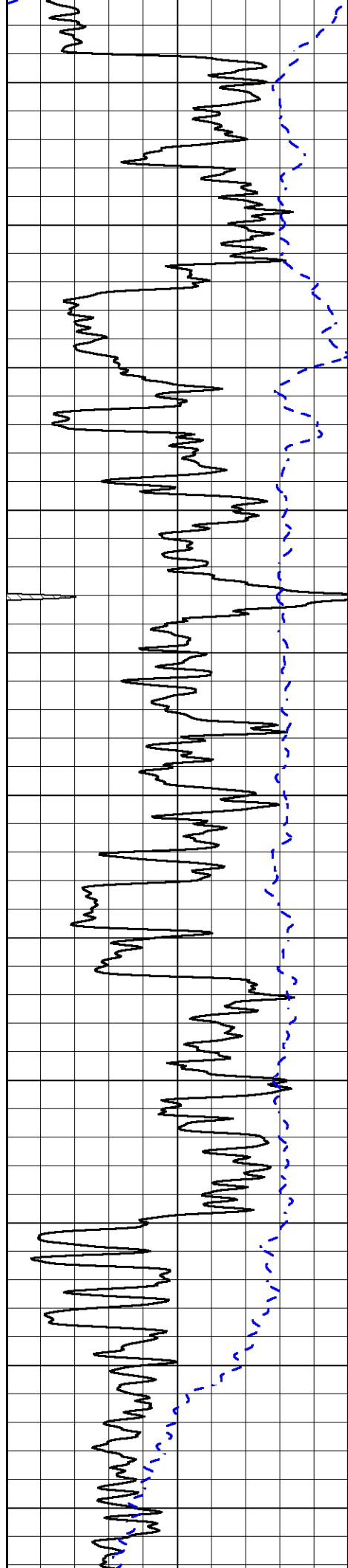
| | |
|---------------------|----------------------------|
| Database File | blacktea_youkin_c_1hd.db |
| Dataset Pathname | DIL/btstk |
| Presentation Format | dil2in |
| Dataset Creation | Thu Mar 12 22:35:55 2015 |
| Charted by | Depth in Feet scaled 1:600 |

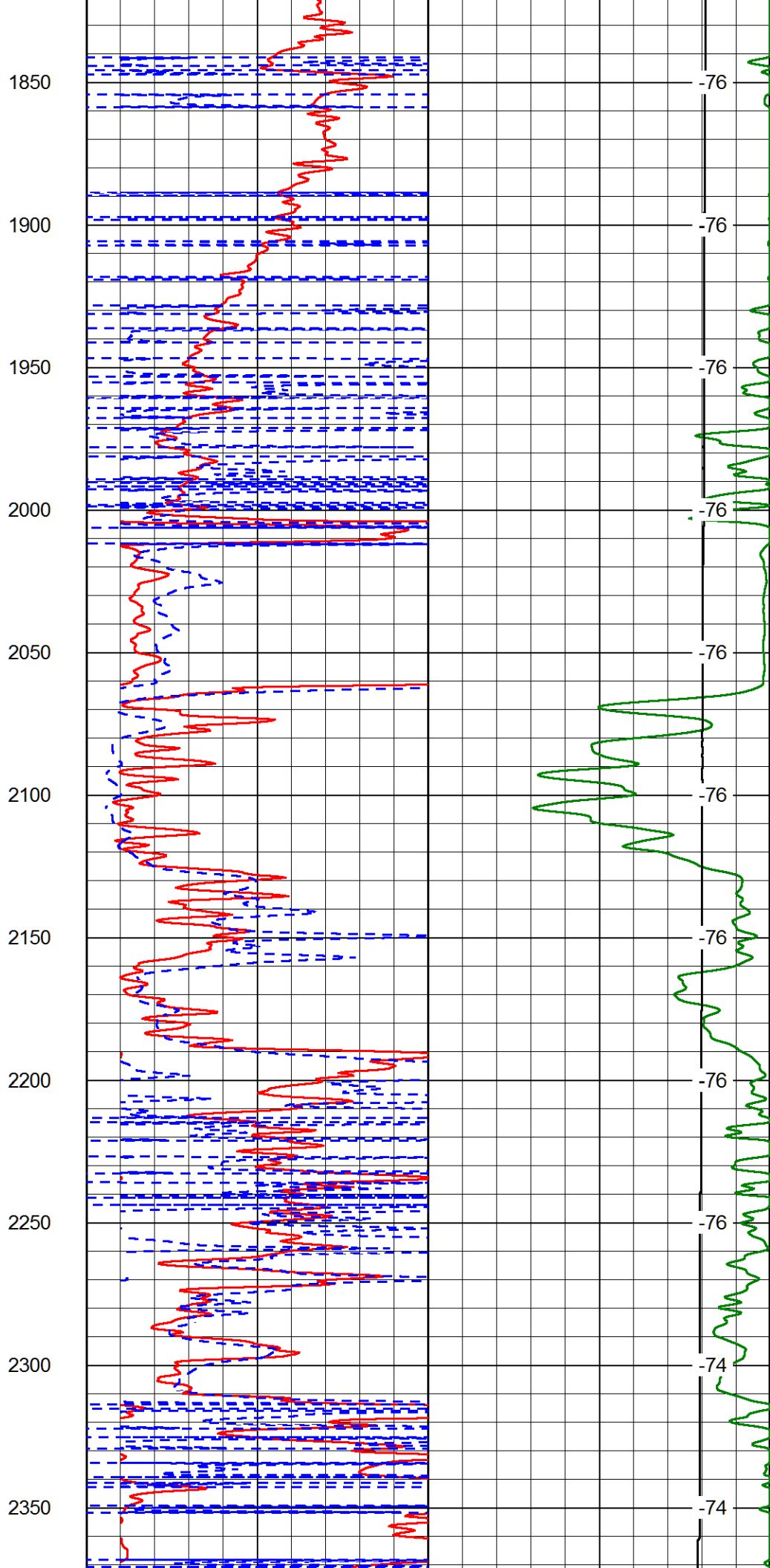
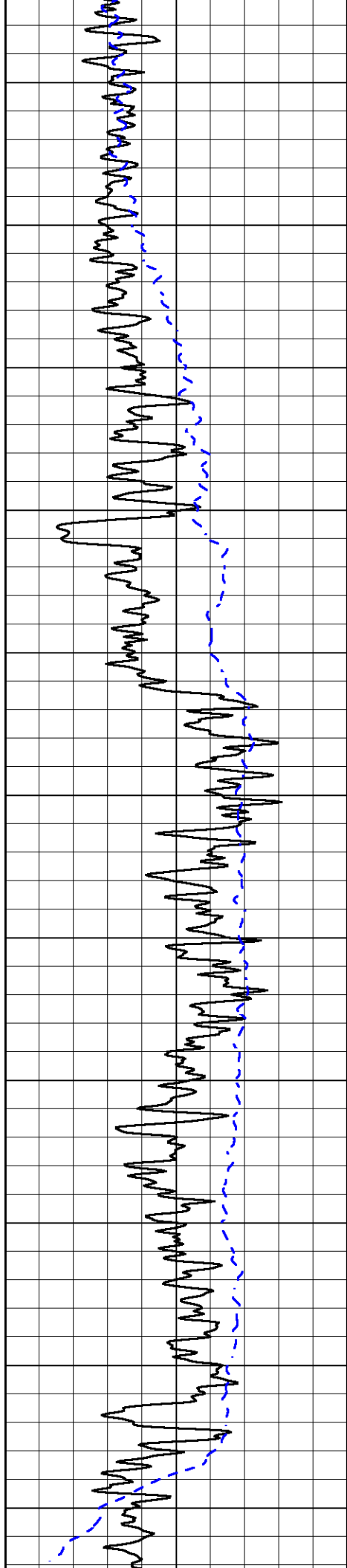
0 Gamma Ray 150
-200 SP (mV) 0

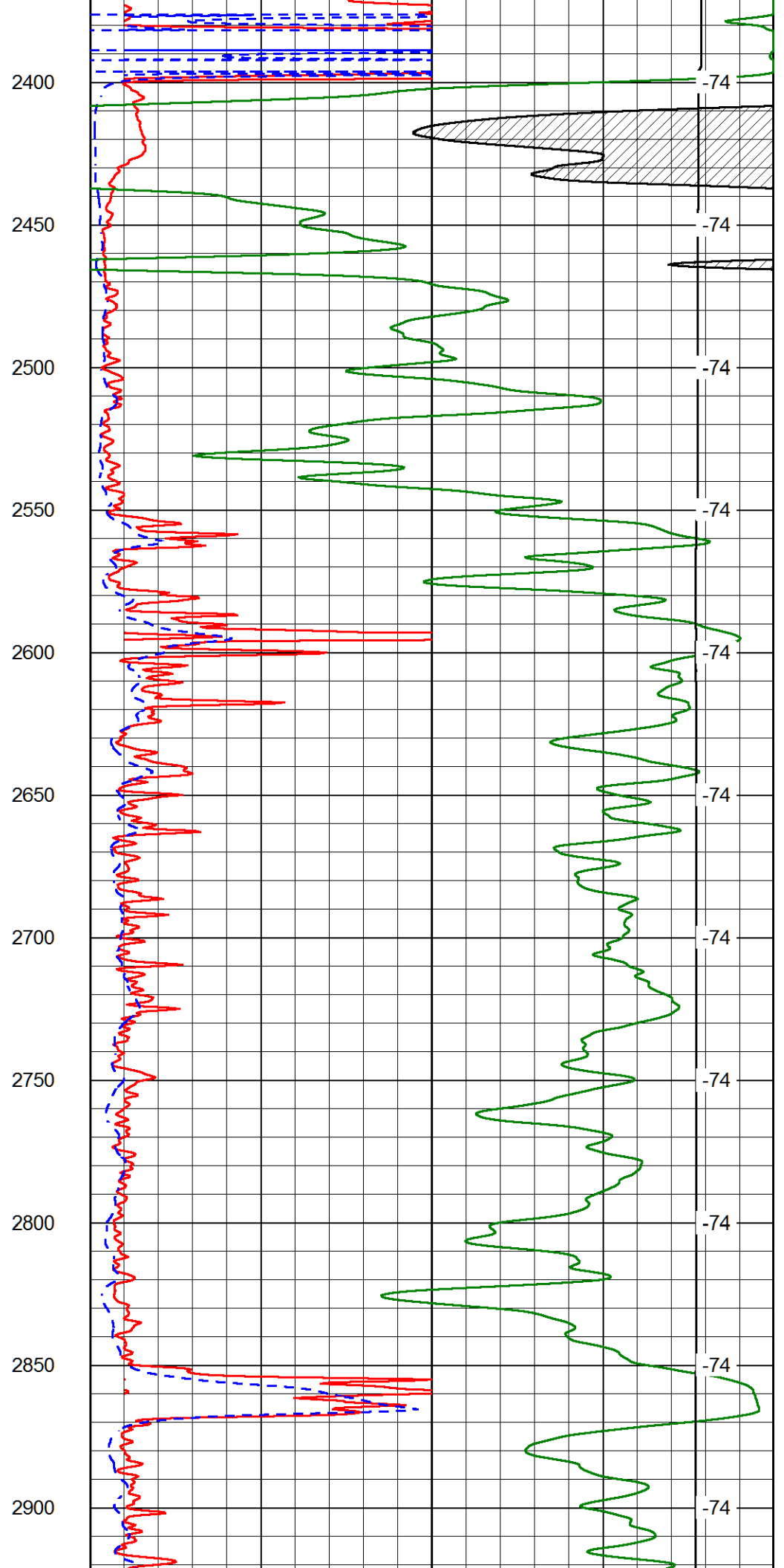
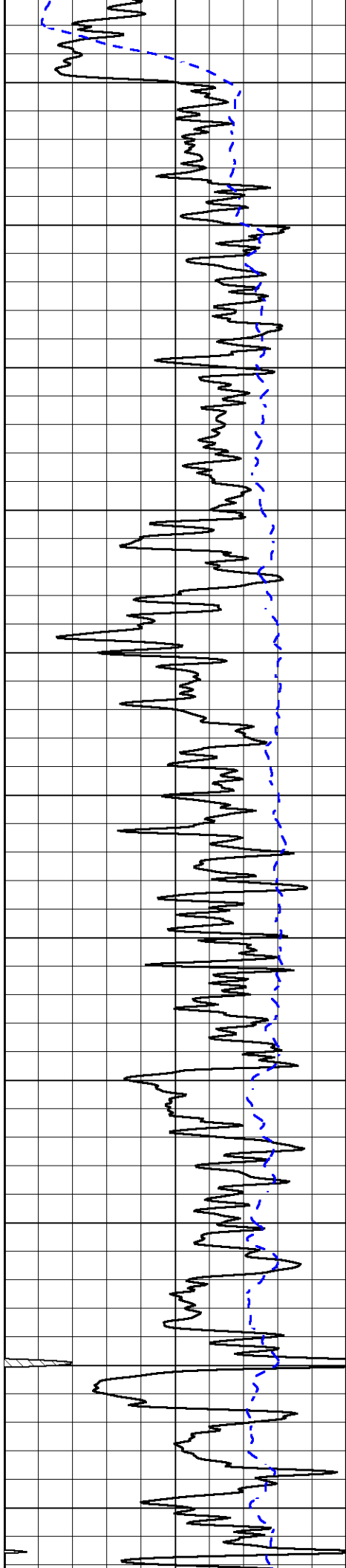
1000 Conductivity 0
15000 Line Tension 0
0 Shallow Resistivity 50 LSPD
0 Deep Resistivity 50
50 Shallow Resistivity 500
50 Deep Resistivity 500

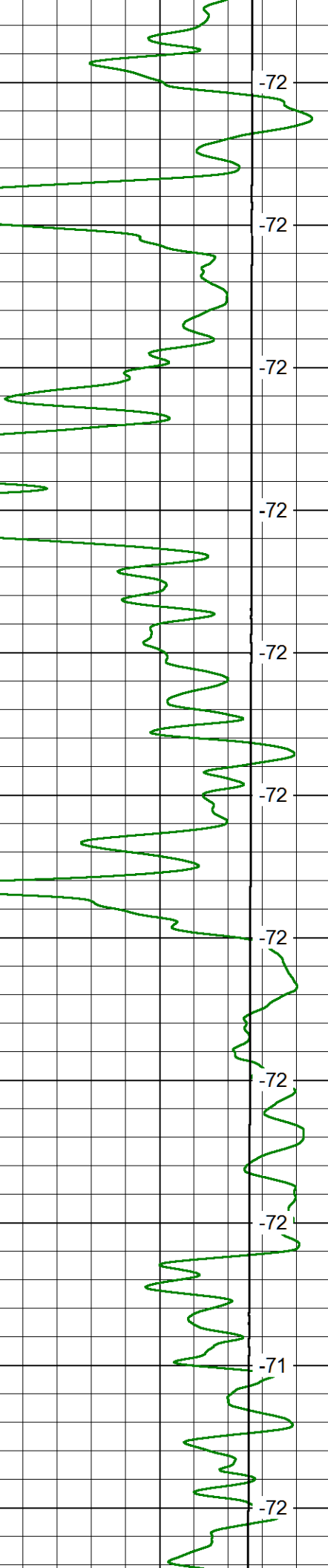
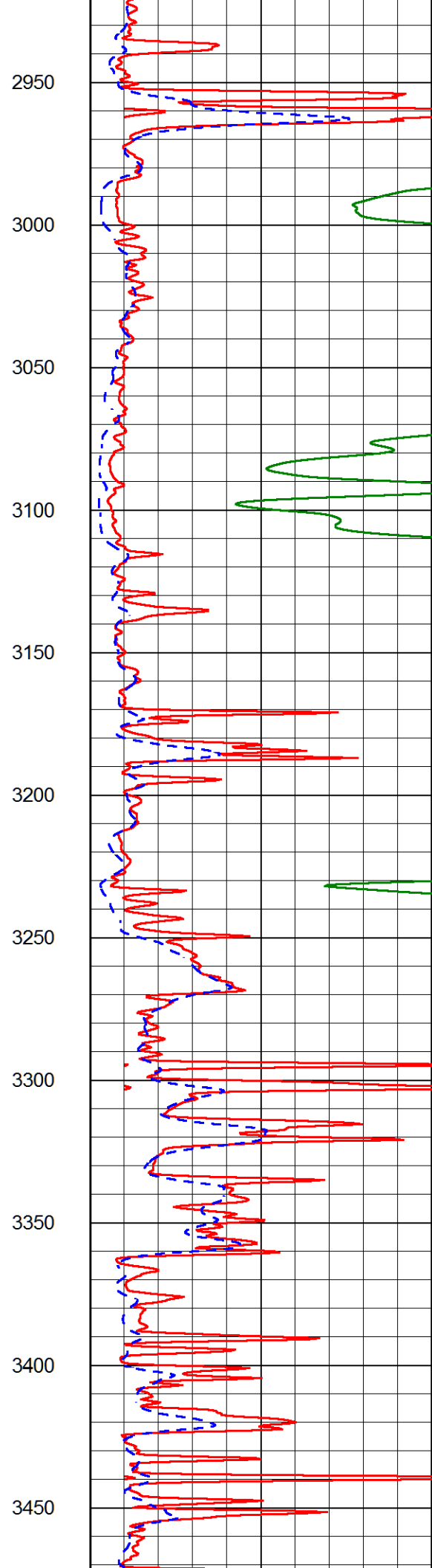
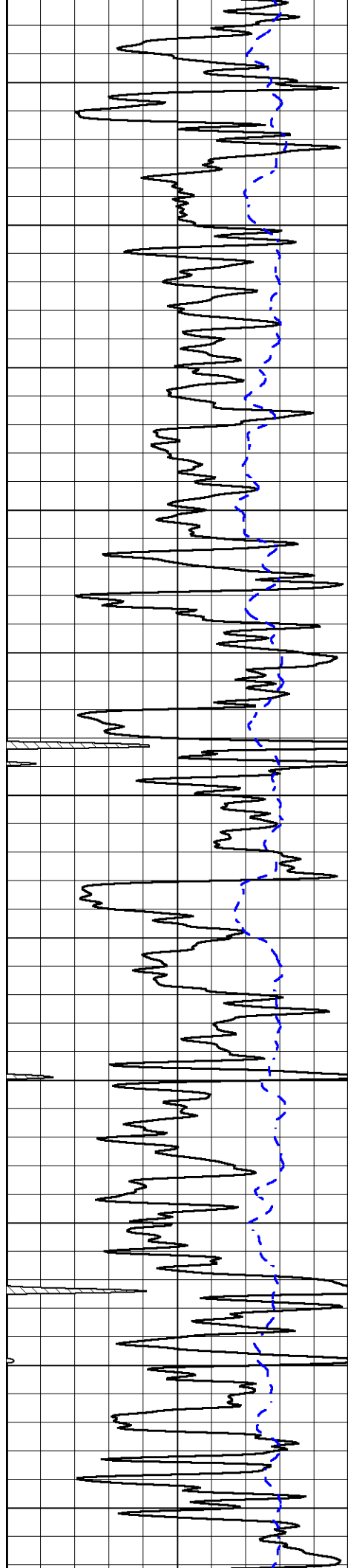


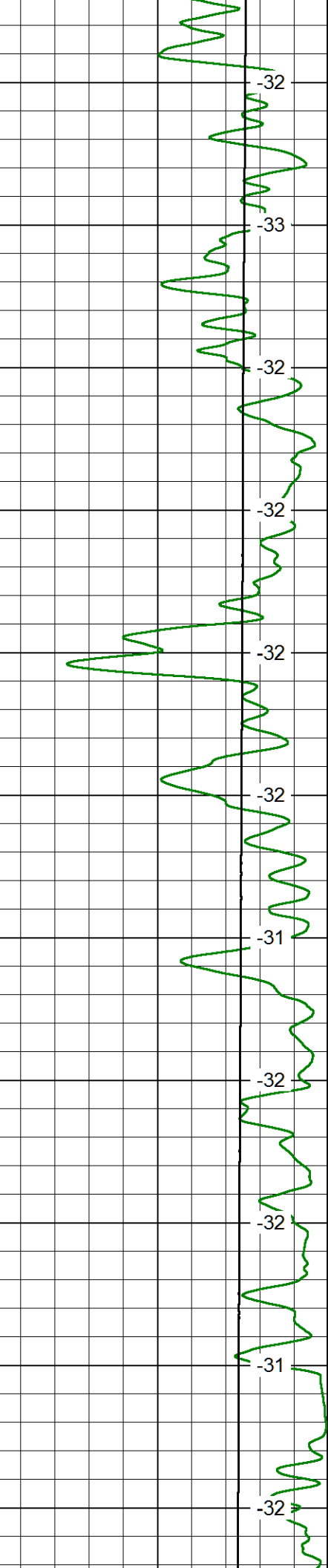
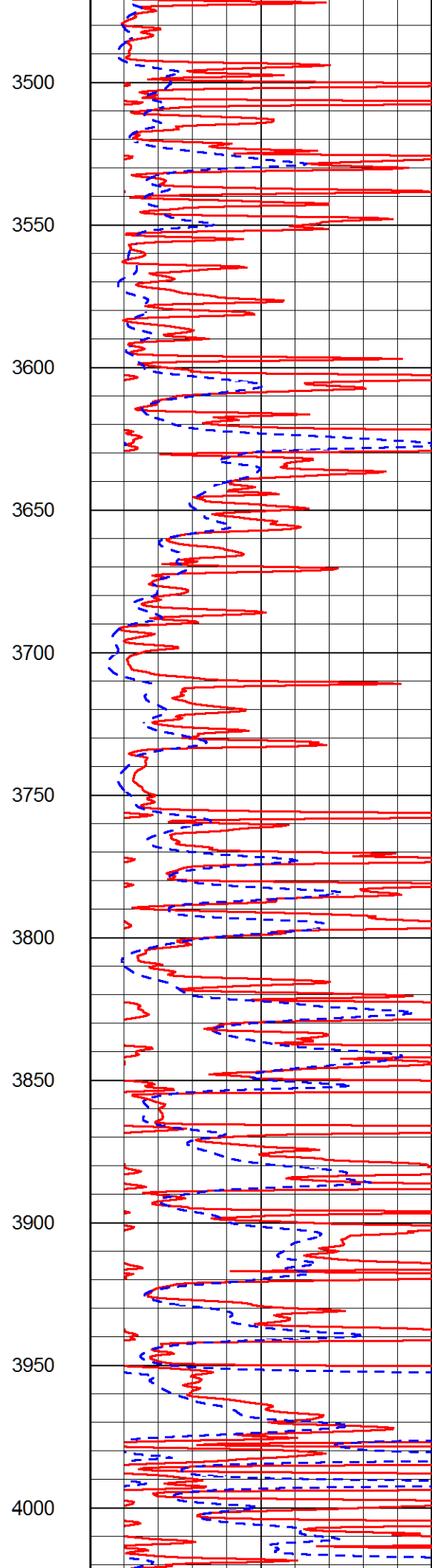
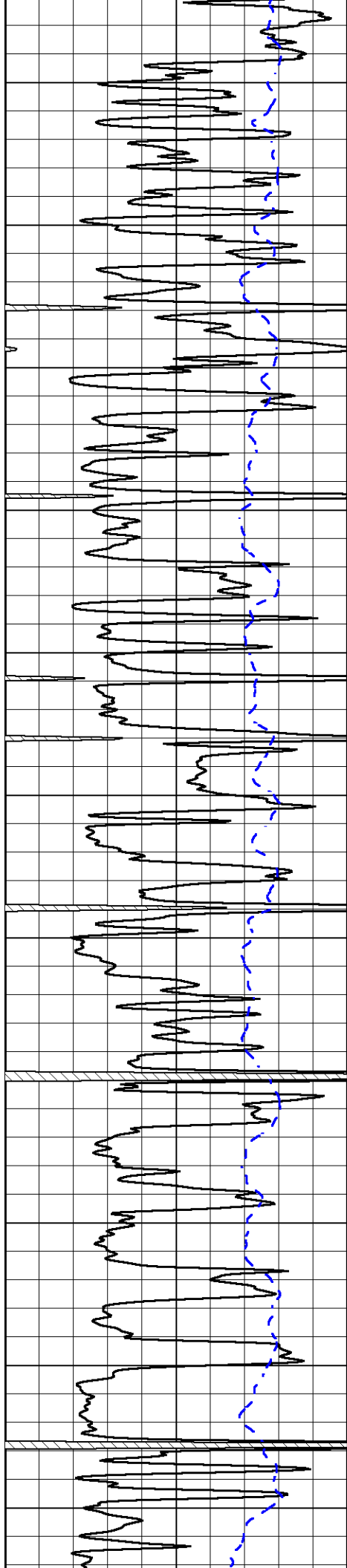


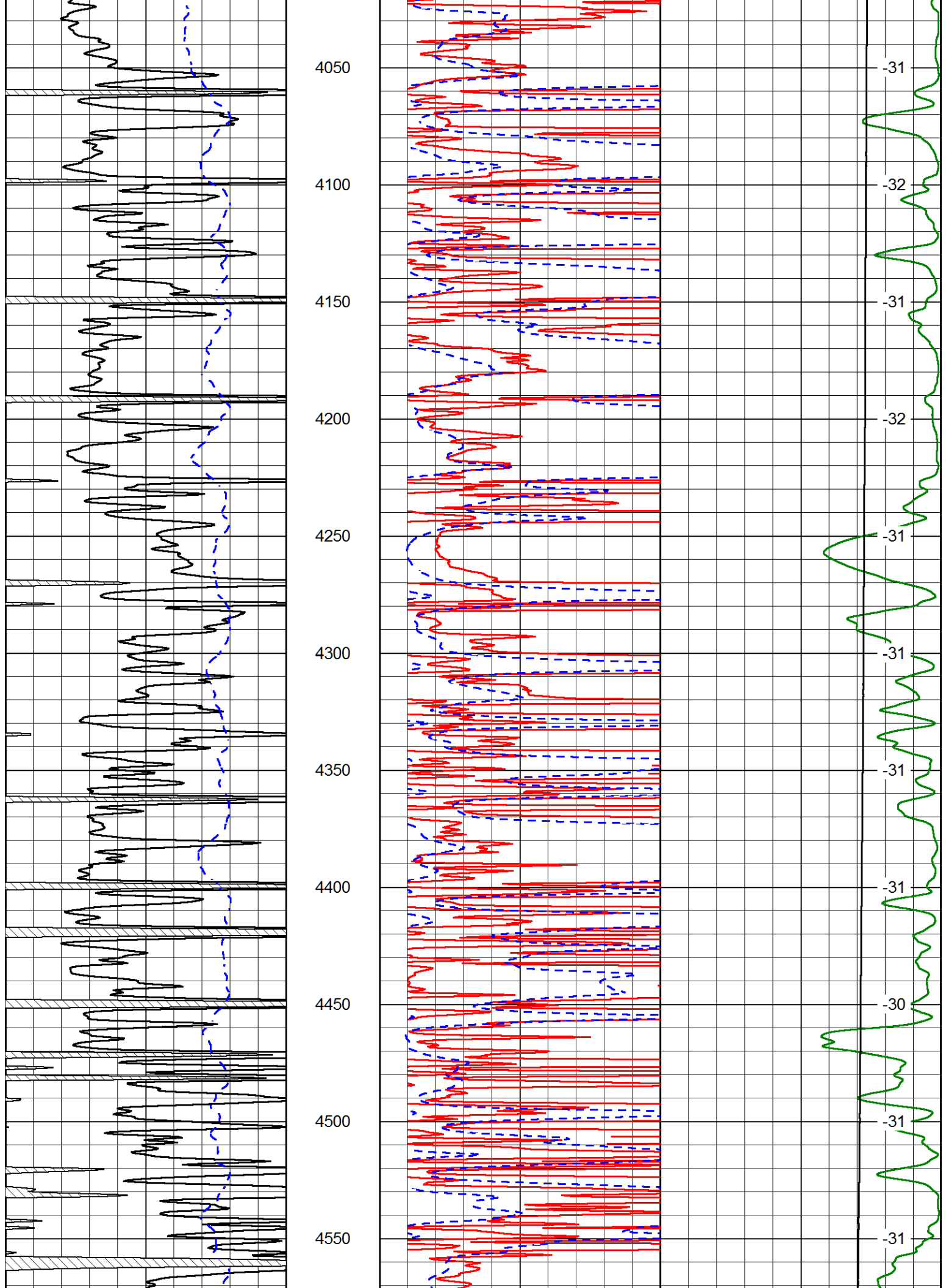


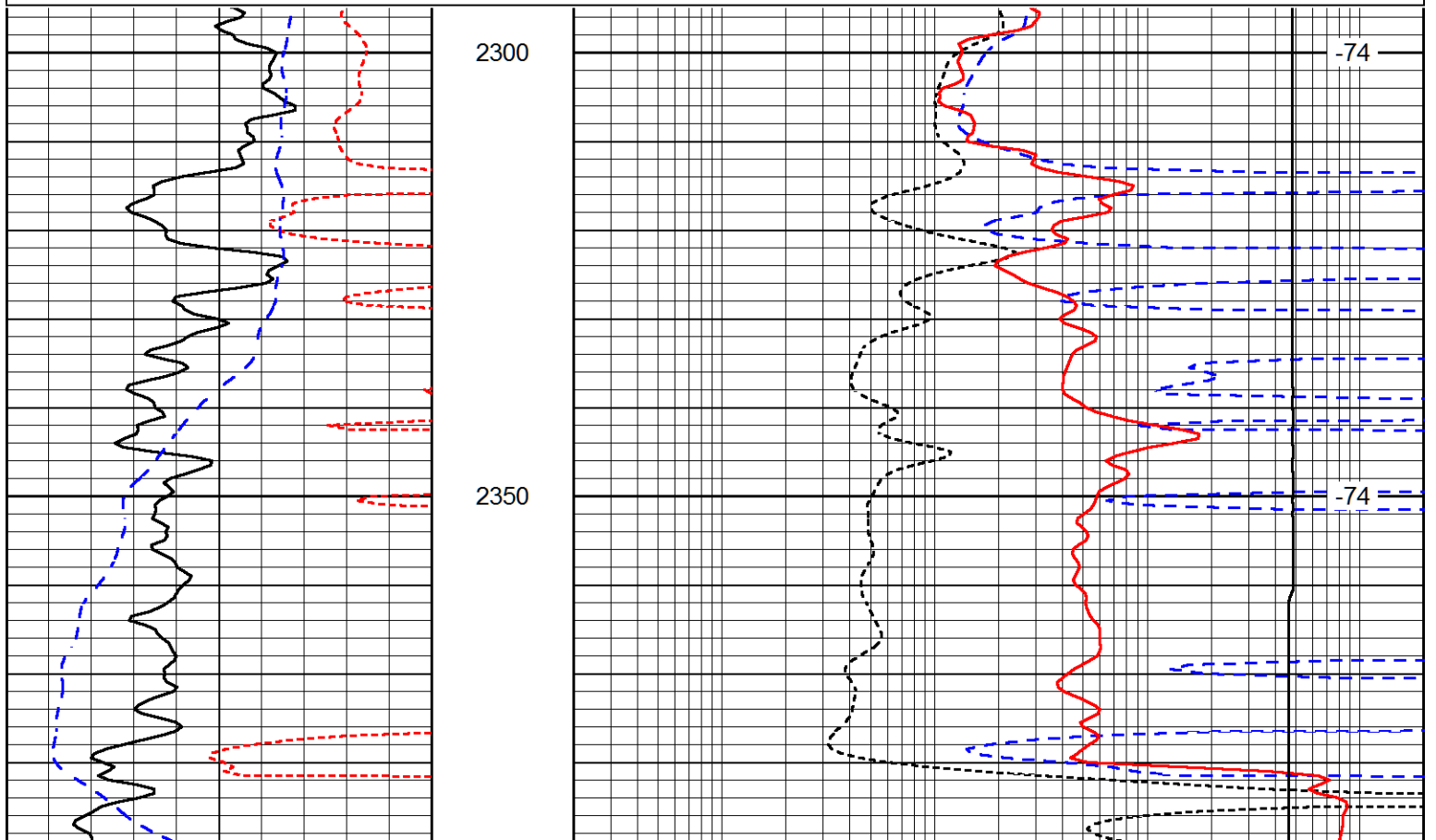
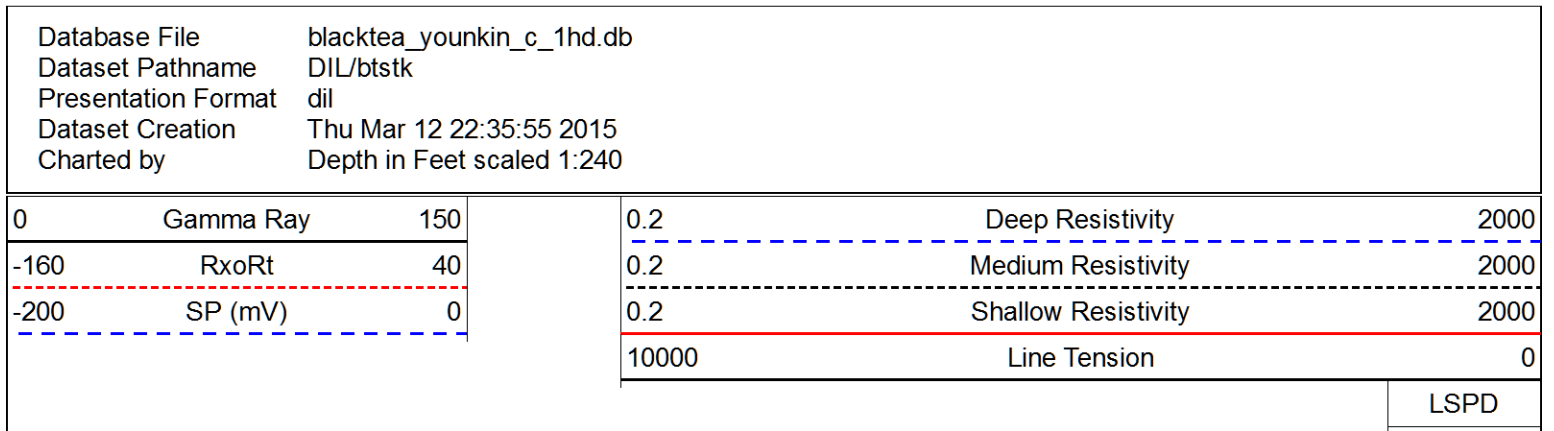
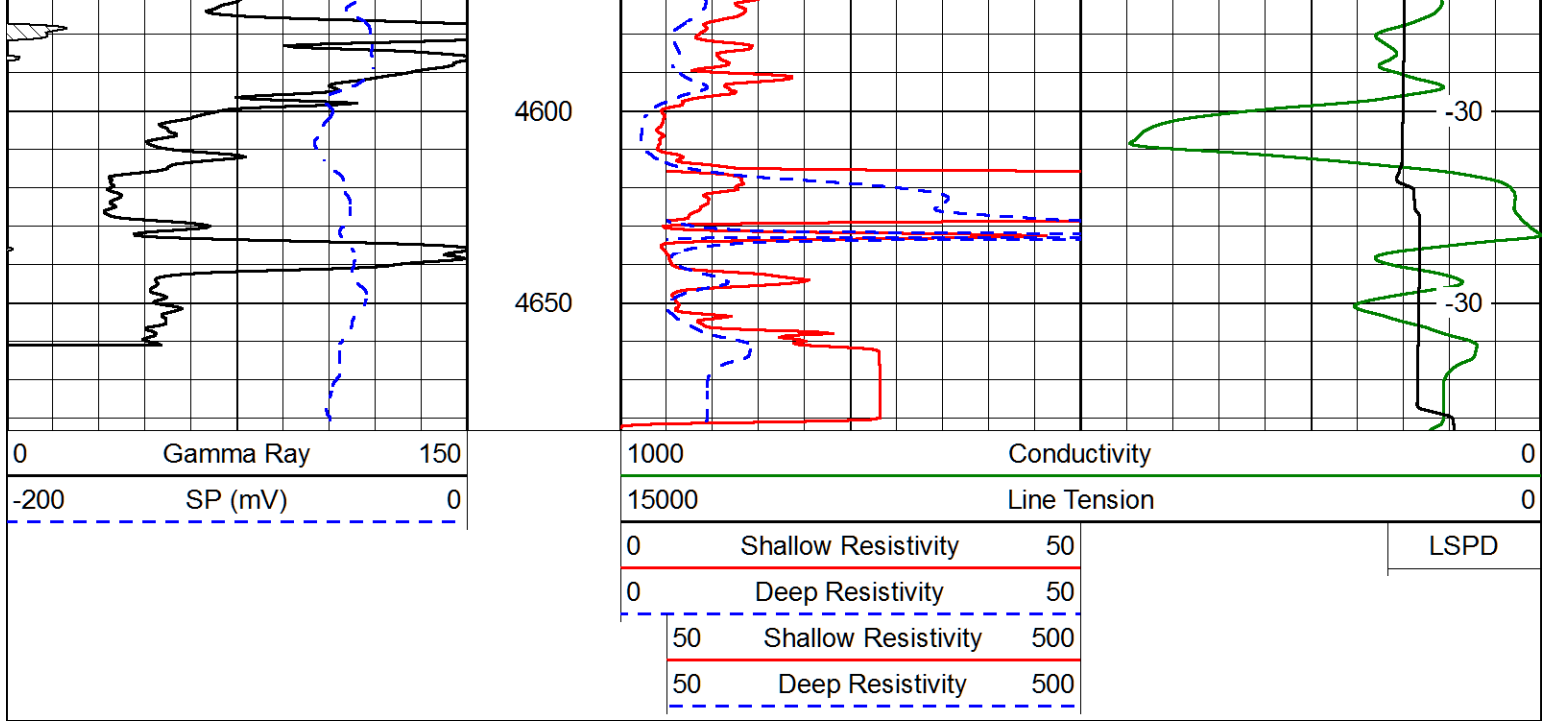


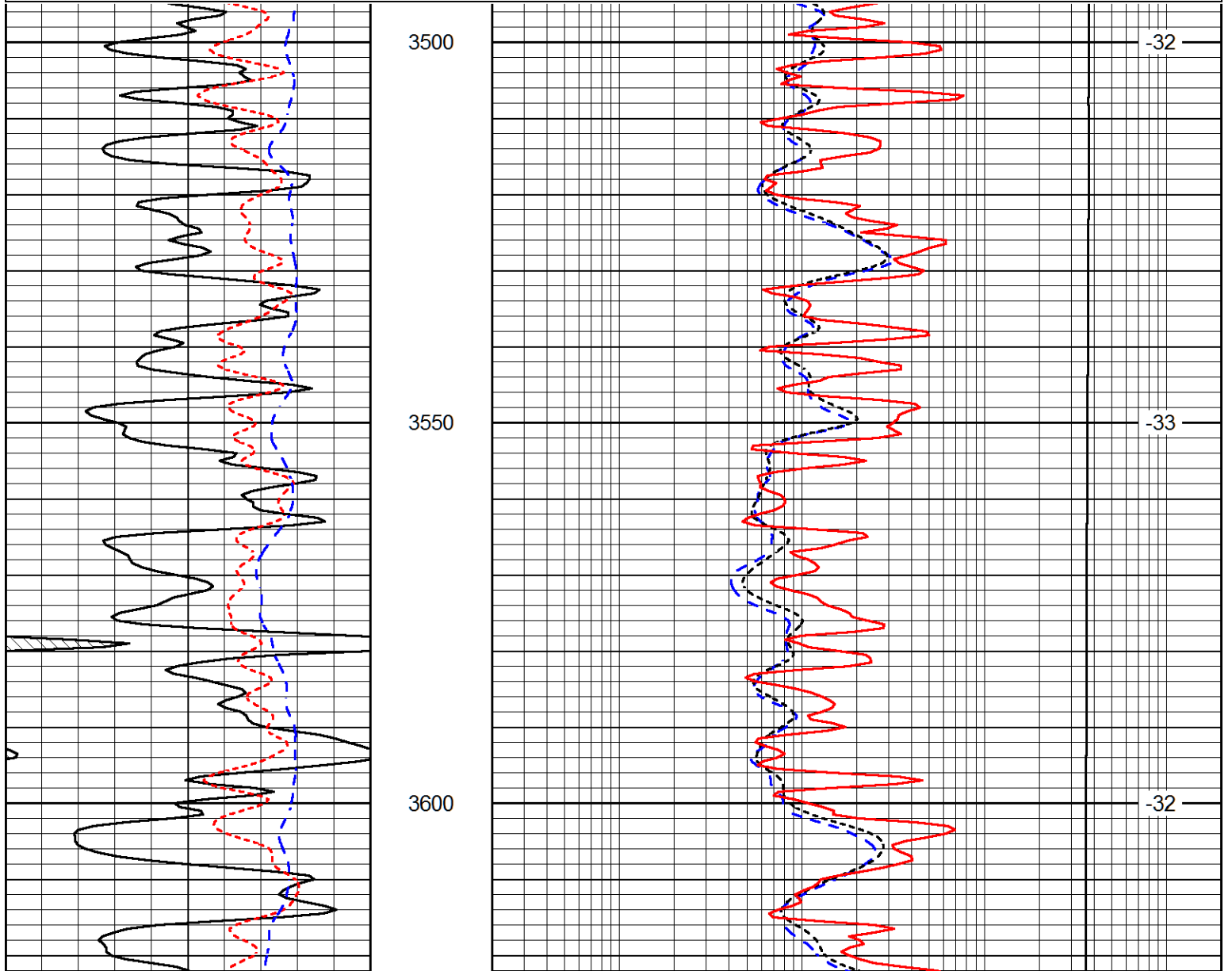
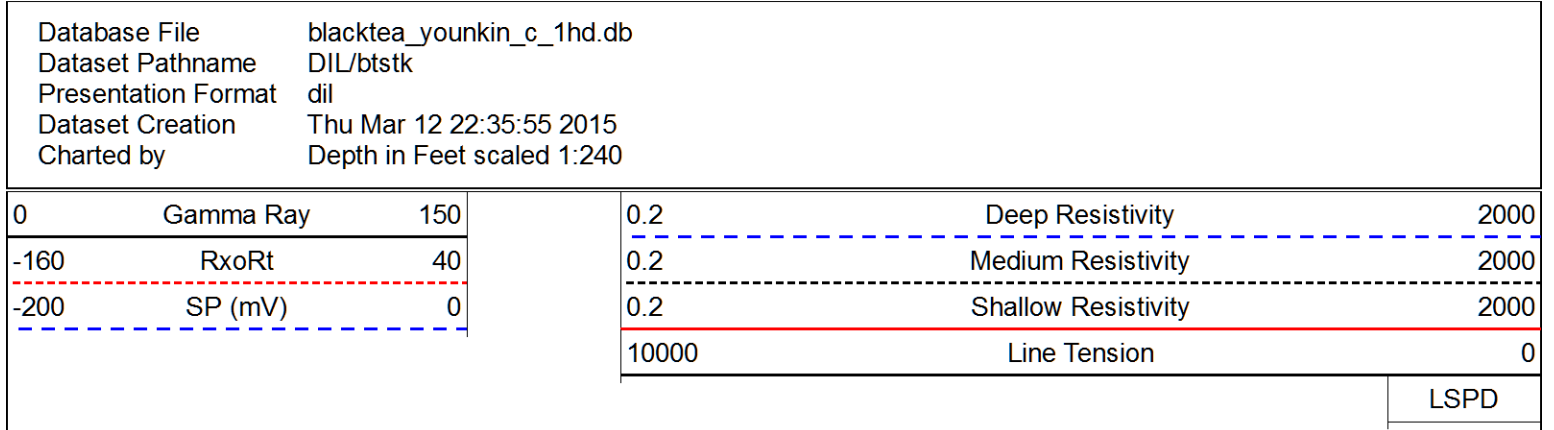
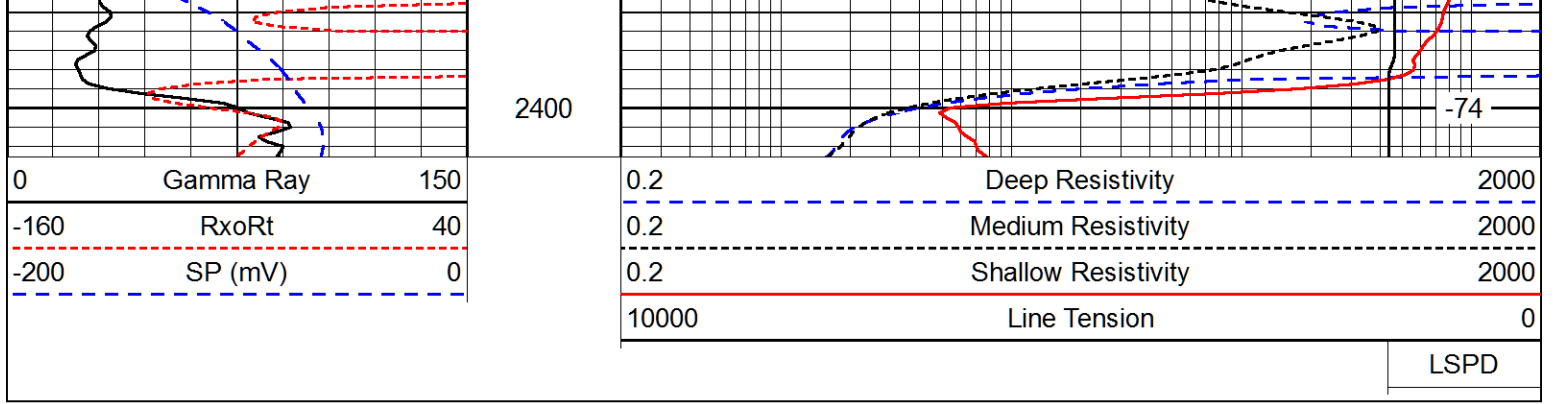


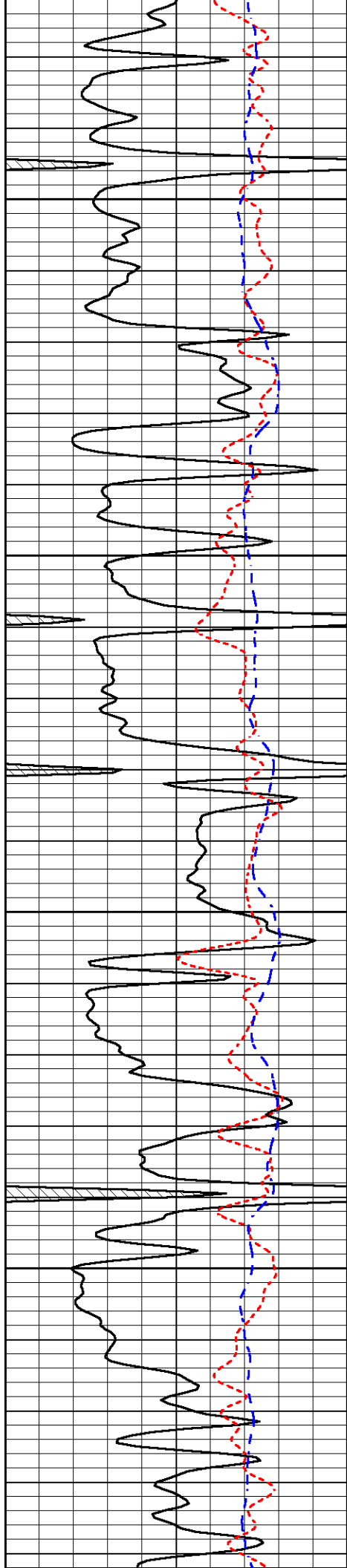










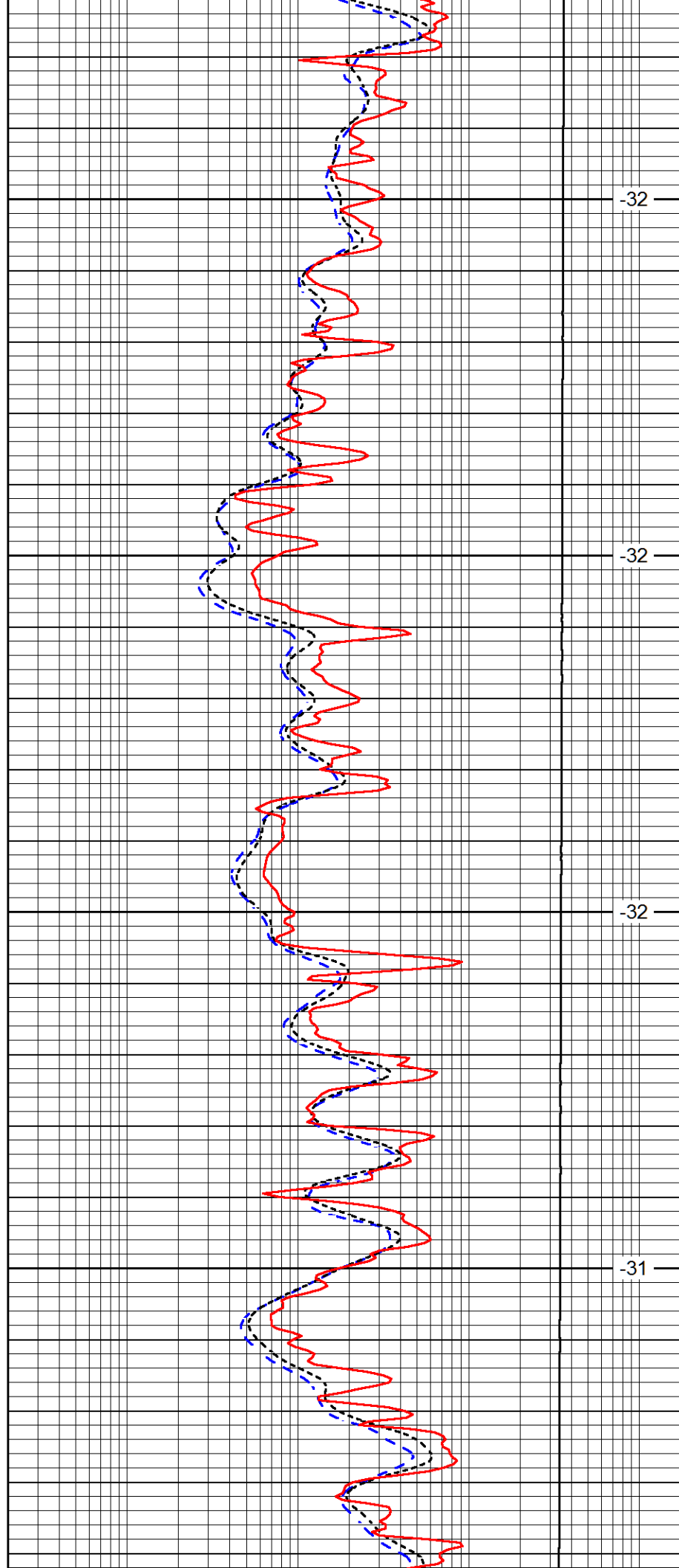


3650

3700

3750

3800

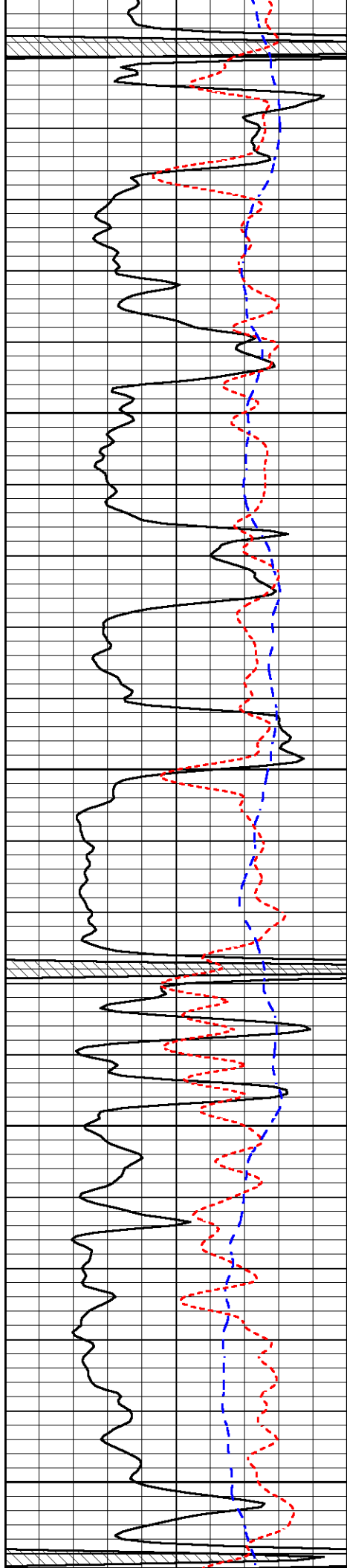


-32

-32

-32

-31



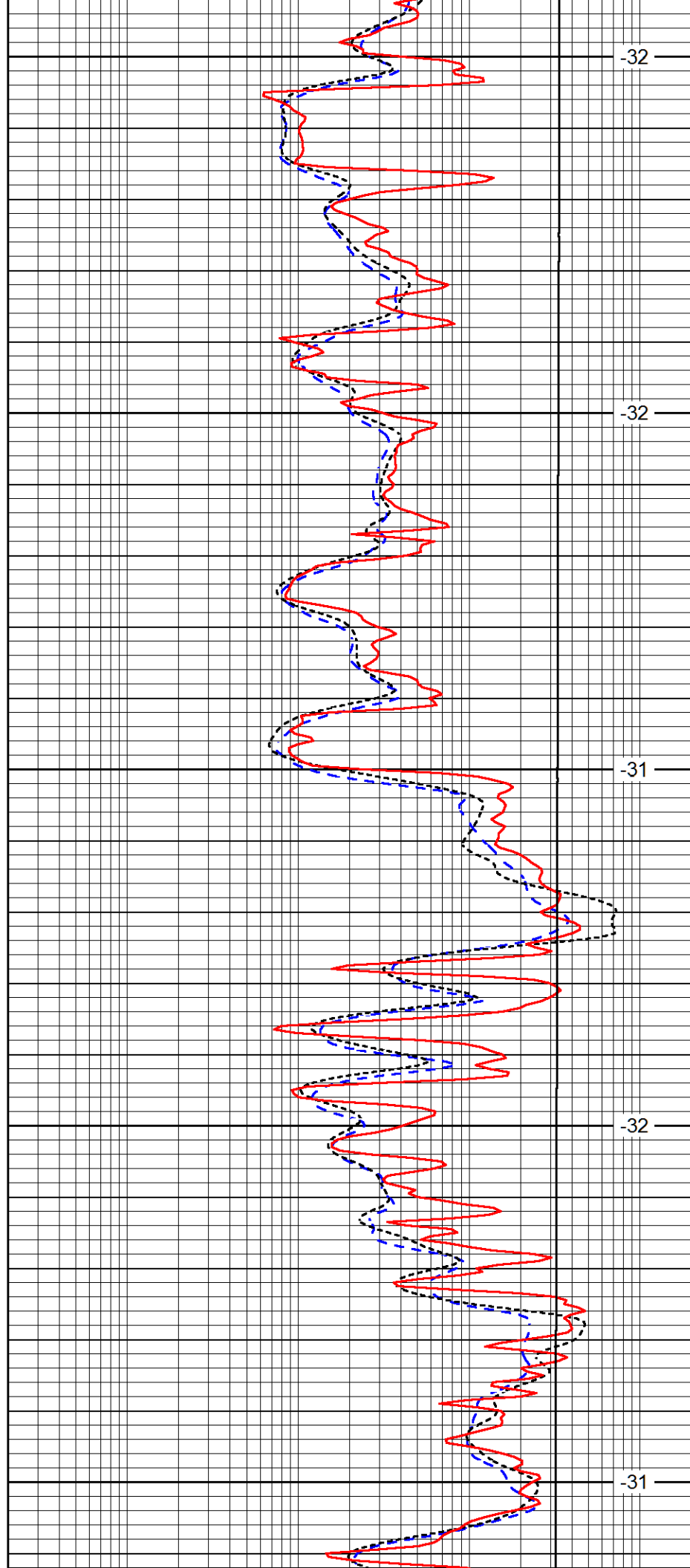
3850

3900

3950

4000

4050



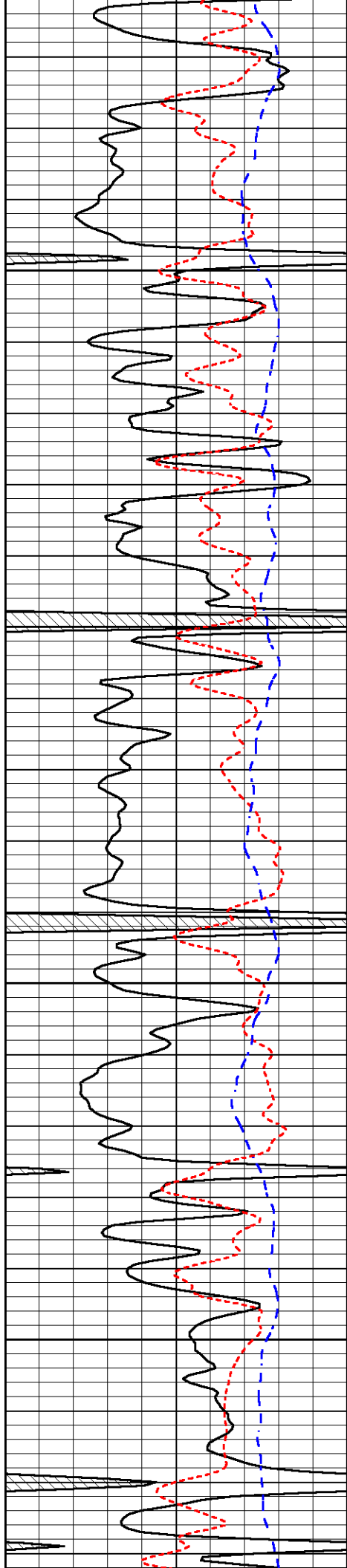
-32

-32

-31

-32

-31

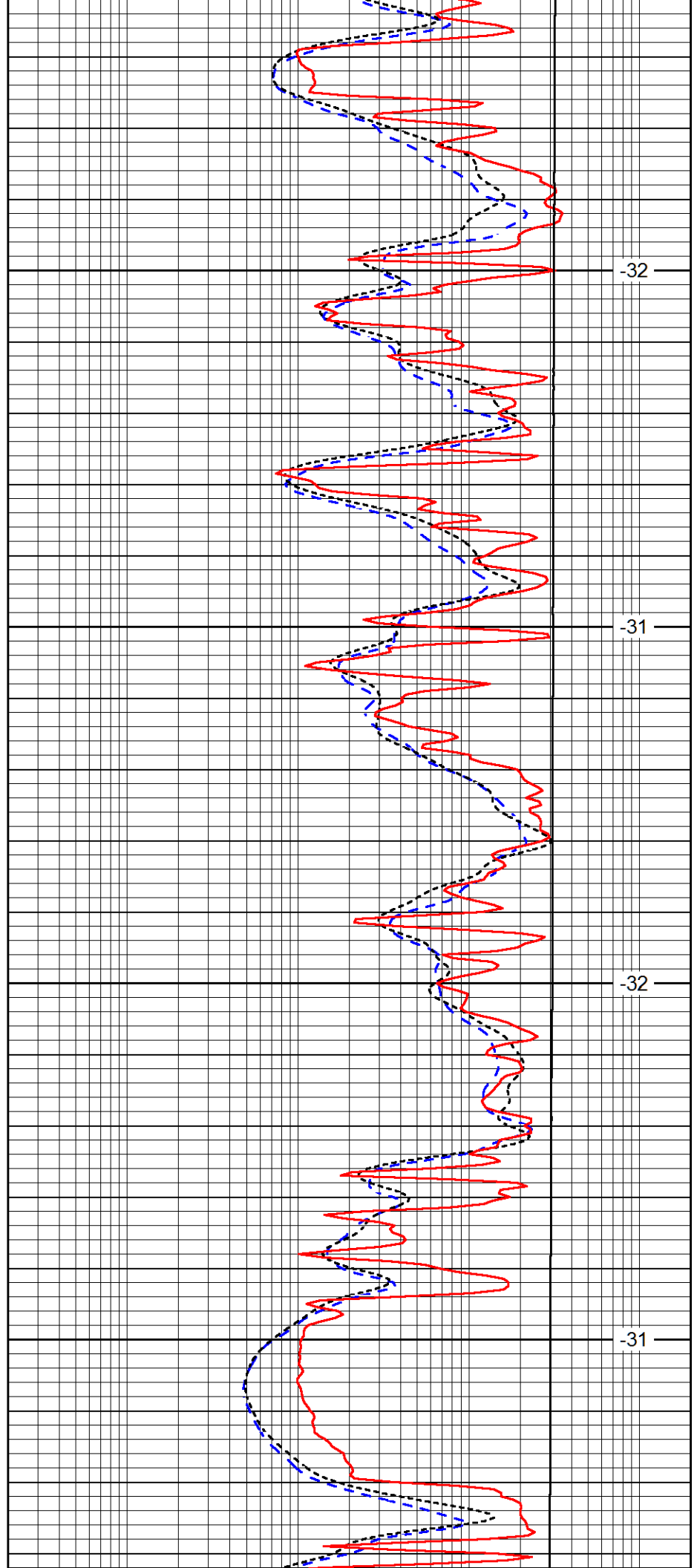


4100

4150

4200

4250

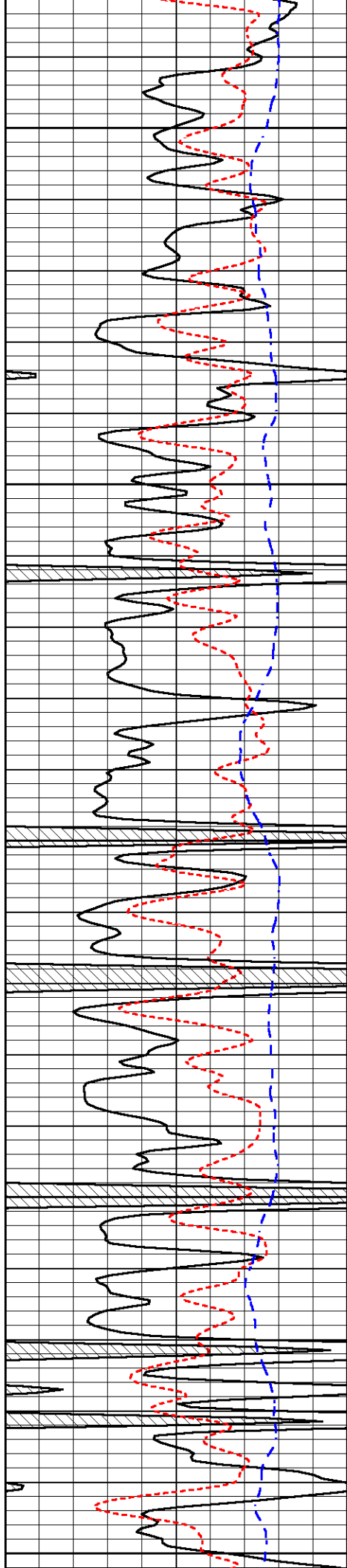


-32

-31

-32

-31



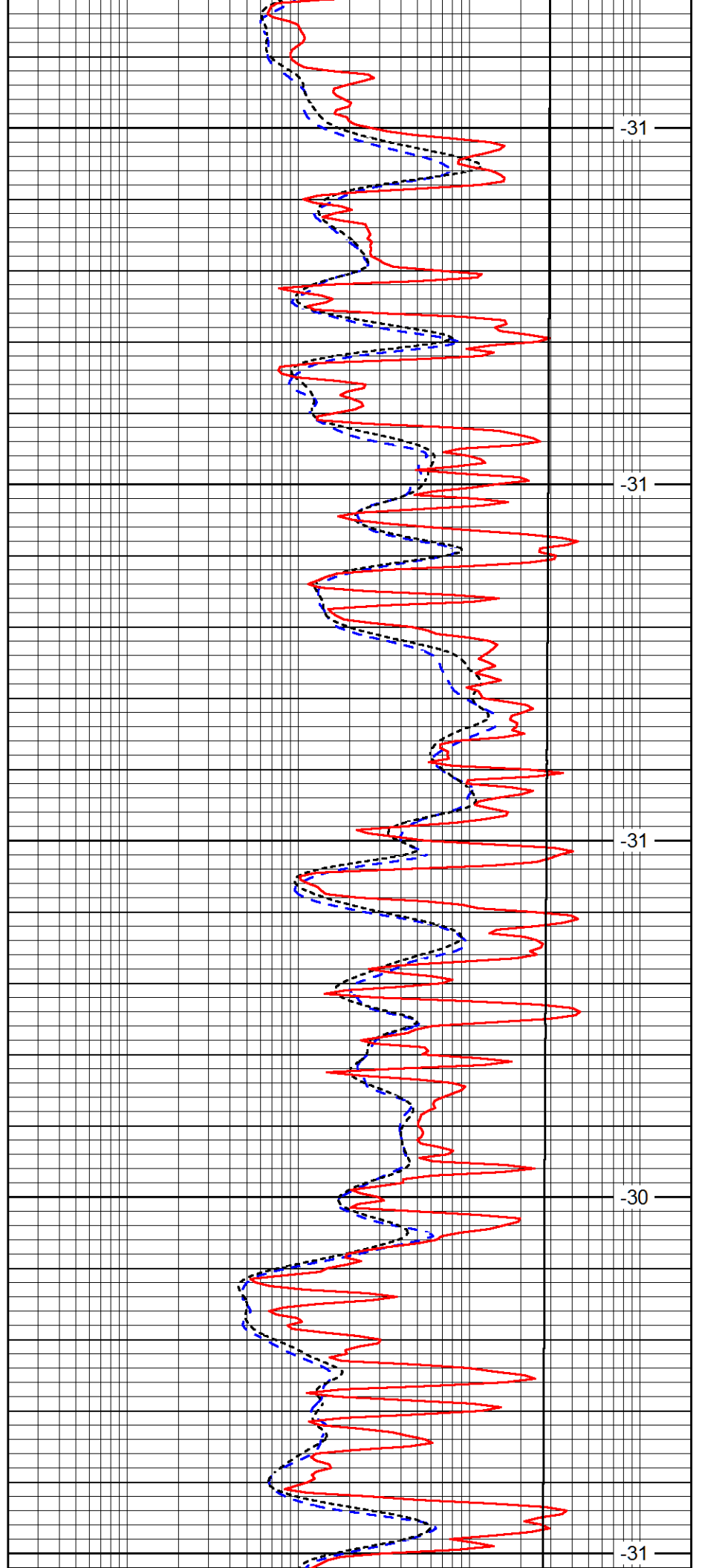
4300

4350

4400

4450

4500



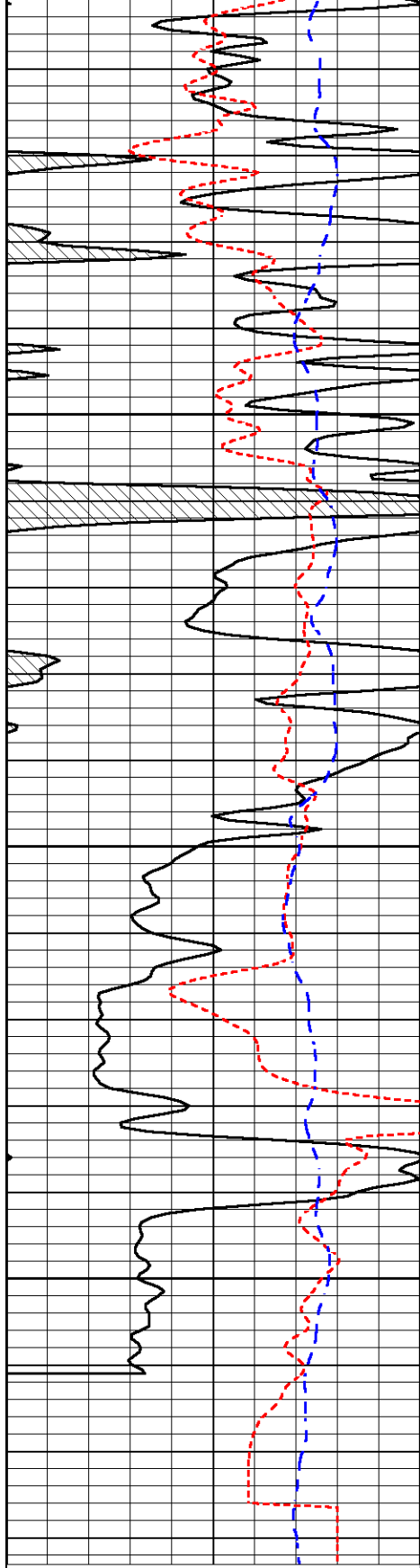
-31

-31

-31

-30

-31

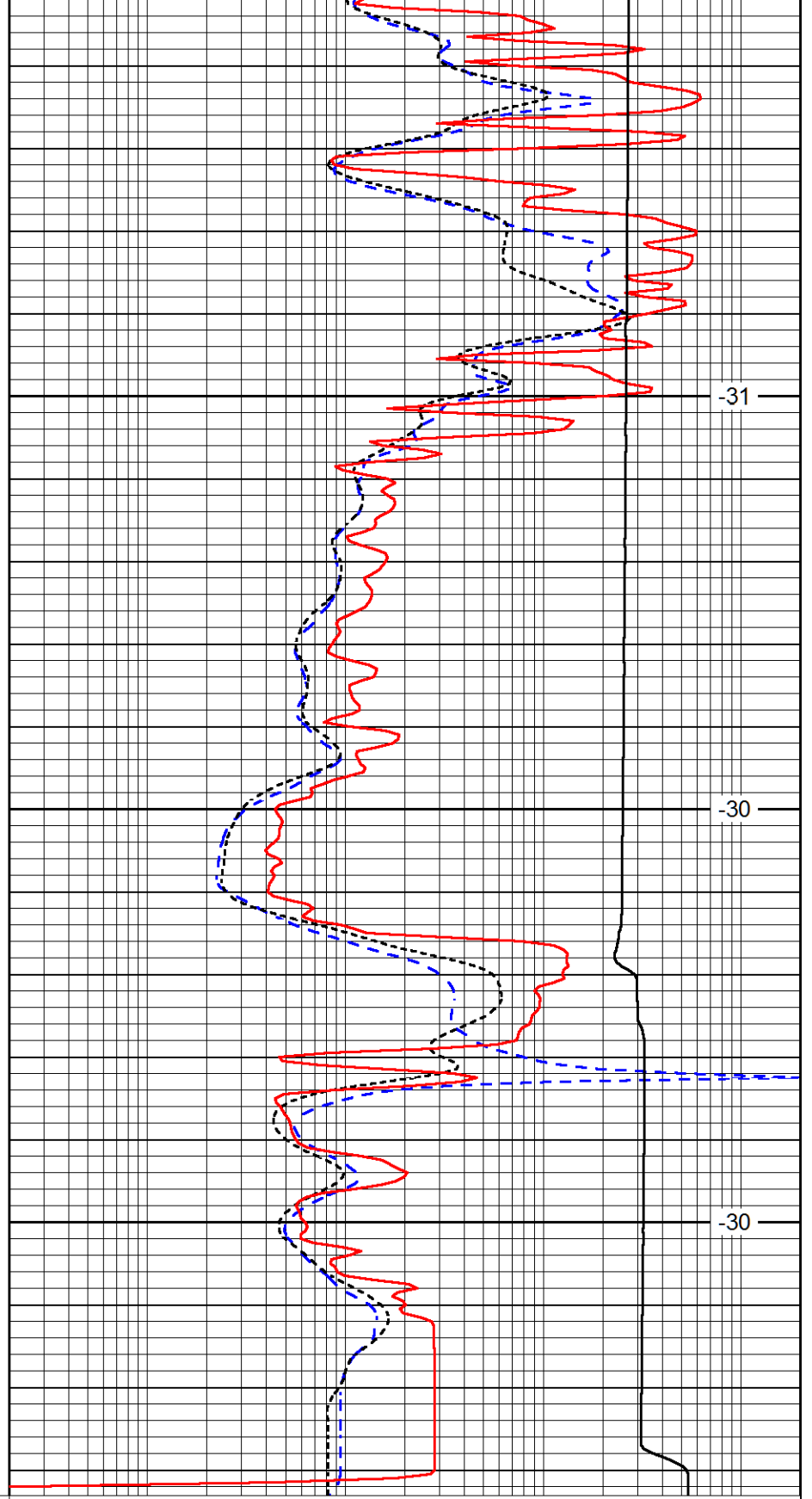


4550

4600

4650

| | | |
|------|-----------|-----|
| 0 | Gamma Ray | 150 |
| -160 | RxoRt | 40 |
| -200 | SP (mV) | 0 |



-31

-30

-30

| | | |
|-------|---------------------|------|
| 0.2 | Deep Resistivity | 2000 |
| 0.2 | Medium Resistivity | 2000 |
| 0.2 | Shallow Resistivity | 2000 |
| 10000 | Line Tension | 0 |

LSPD