



PIONEER

Pioneer Energy Services

**Borehole Compensated
Sonic Log**

API No.	15-109-21396-00-00		
Company	Black Tea Oil, LLC		
Well	Younkin C #1		
Field	N/A		
County	Logan	State Kansas	
Location	1175' FSL & 750' FWL		
Sec: 26	Twp: 14S	Rge: 34W	
Permanent Datum	Ground Level	Elevation 2984	
Log Measured From	Kelly Bushing	9 Ft. Above Perm. Datum	
Drilling Measured From	Kelly Bushing	K.B. 2993 D.F. 2984 G.L. 2984	
Other Services	CNL/CDL	MEL/DIL	

Date	3/12/2015						
Run Number	Two						
Type Log	BHC Sonic						
Depth Driller	4680						
Depth Logger	4678						
Bottom Logged Interval	4667						
Top Logged Interval	250						
Type Fluid In Hole	Chemical						
Salinity, PPM CL	14,000						
Density	9.0						
Level	Full						
Max. Rec. Temp. F	123						
Operating Rig Time	5 Hours						
Equipment -- Location	15	Hays					
Recorded By	D.Kerr						
Witnessed By	Kevin Bailey						
Borehole Record		Casing Record					
Run No	Bit	From	To	Size	Wgt.	From	To
One	12.25	00	259	8.625	23#	00	259
Two	7.875	259	TD				

<<< Fold Here >>>

All interpretations are opinions based on inferences from electrical or other measurements and we cannot and do not guarantee the accuracy or correctness of any interpretation, and we shall not, except in the case of gross or willful negligence on our part, be liable or responsible for any loss, costs, damages, or expenses incurred or sustained by anyone resulting from any interpretation made by any of our officers, agents or employees. These interpretations are also subject to our general terms and conditions set out in our current Price Schedule.

Comments

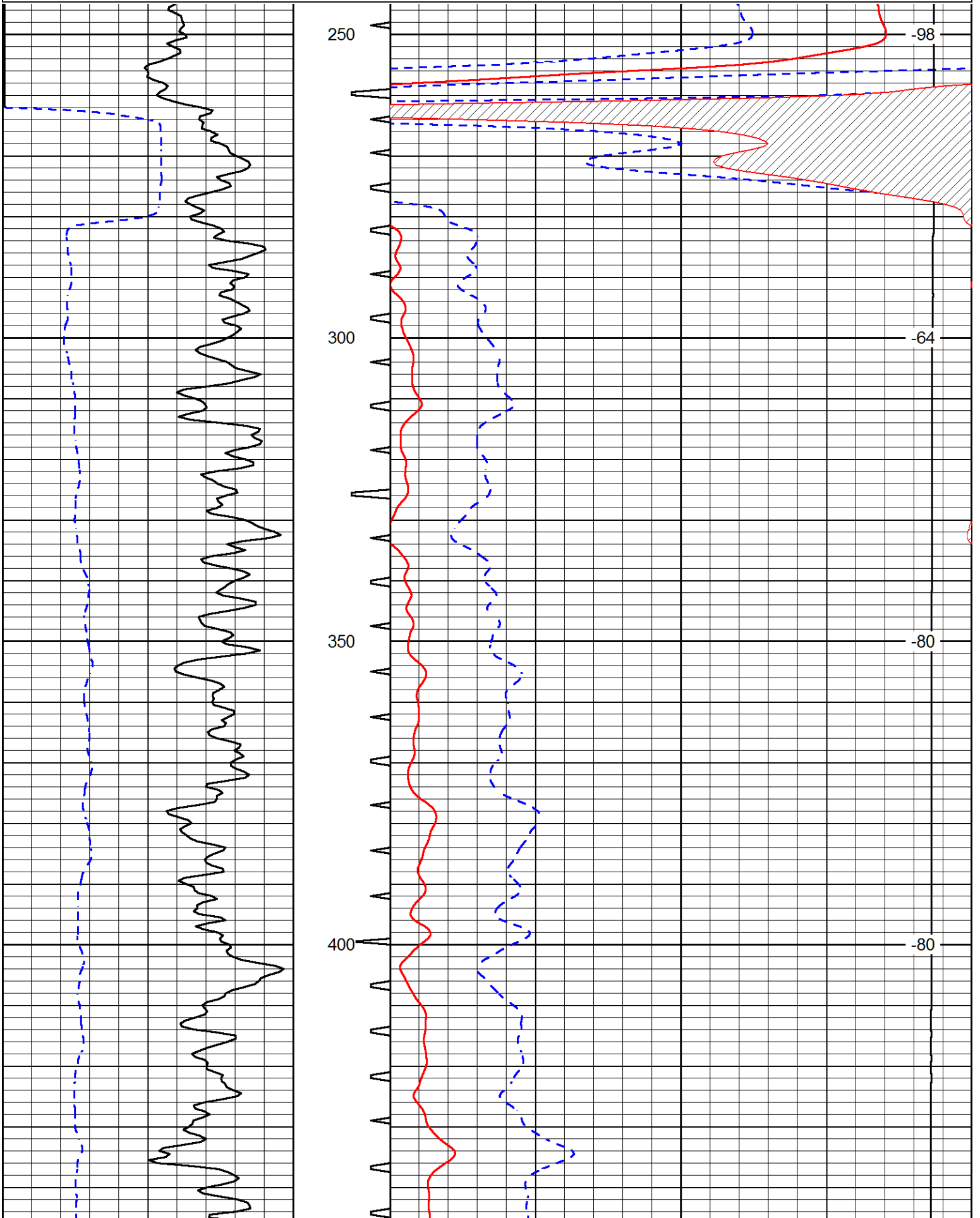
Thank you for using Pioneer Energy Services
785.625.3858

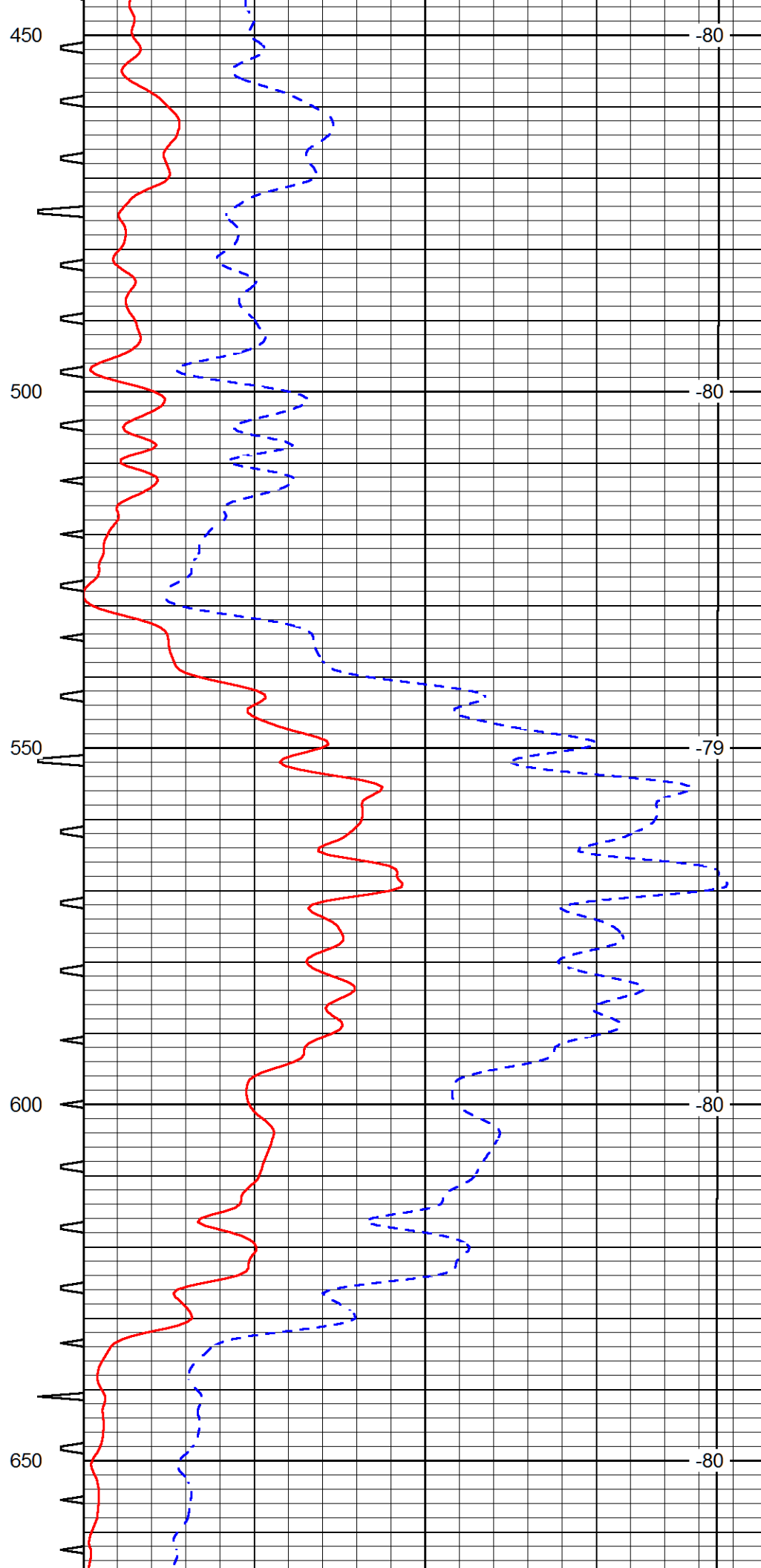
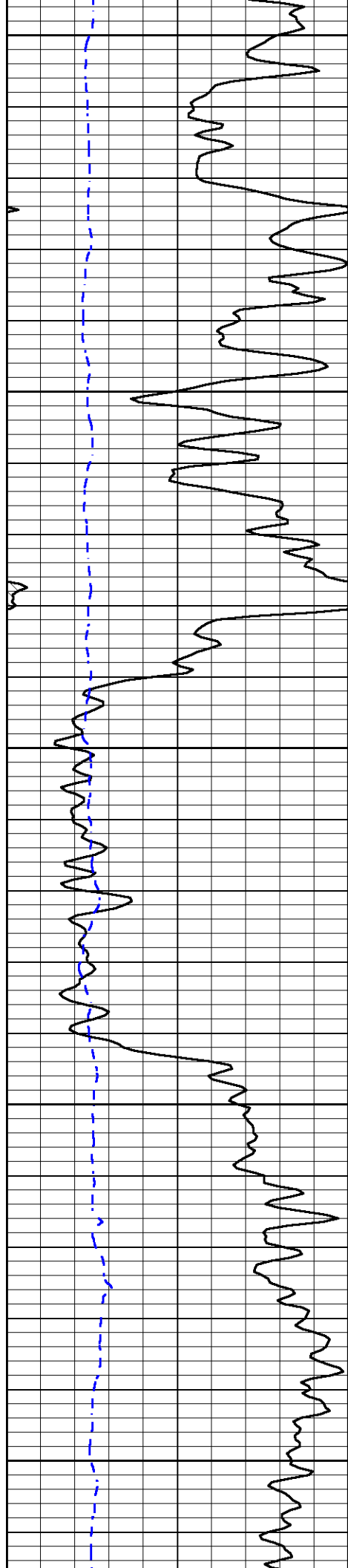
Monument KS, 22 South to Indian RD,
West to 320 RD, 1 1/4 South, East and North Into

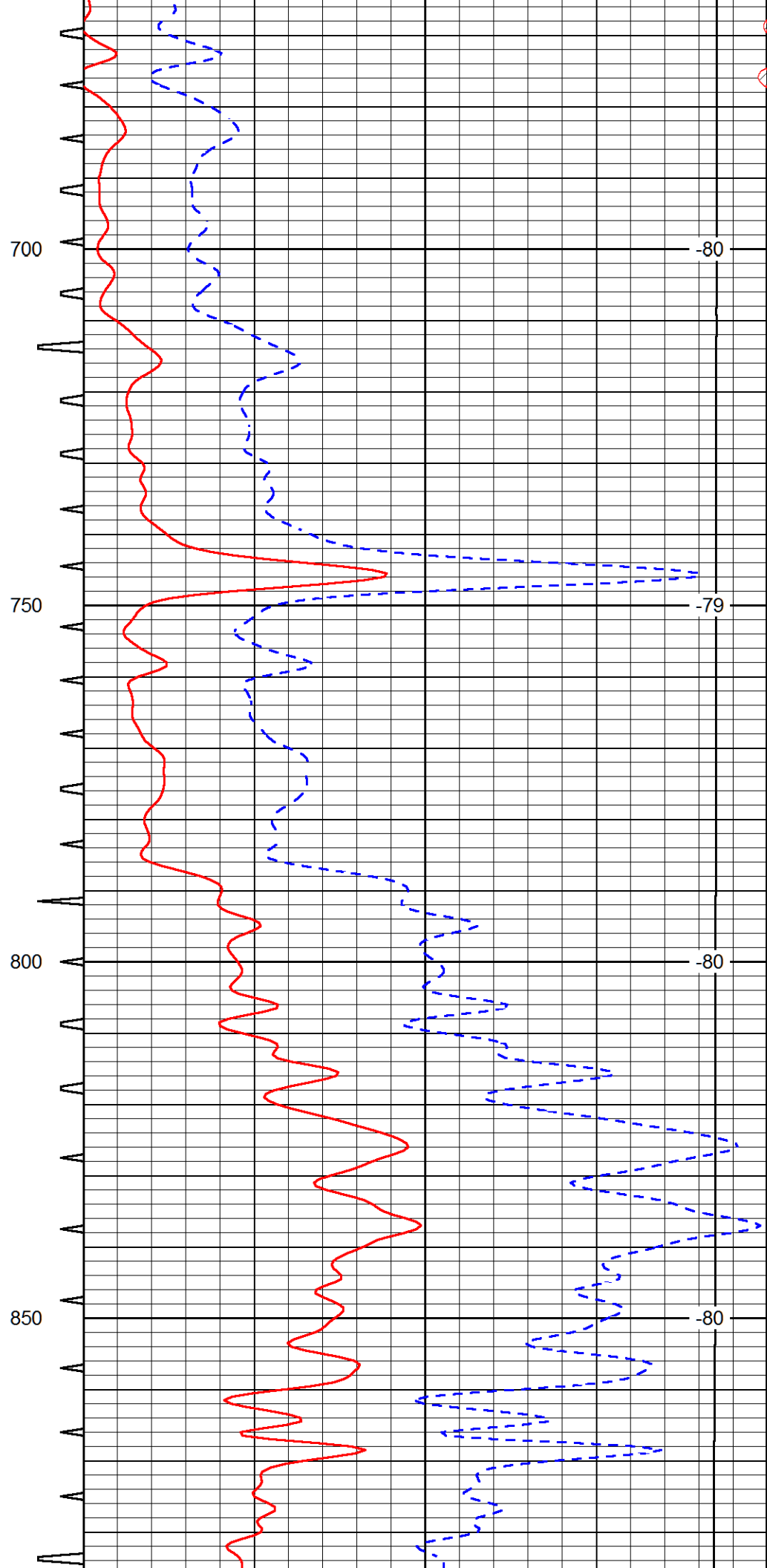
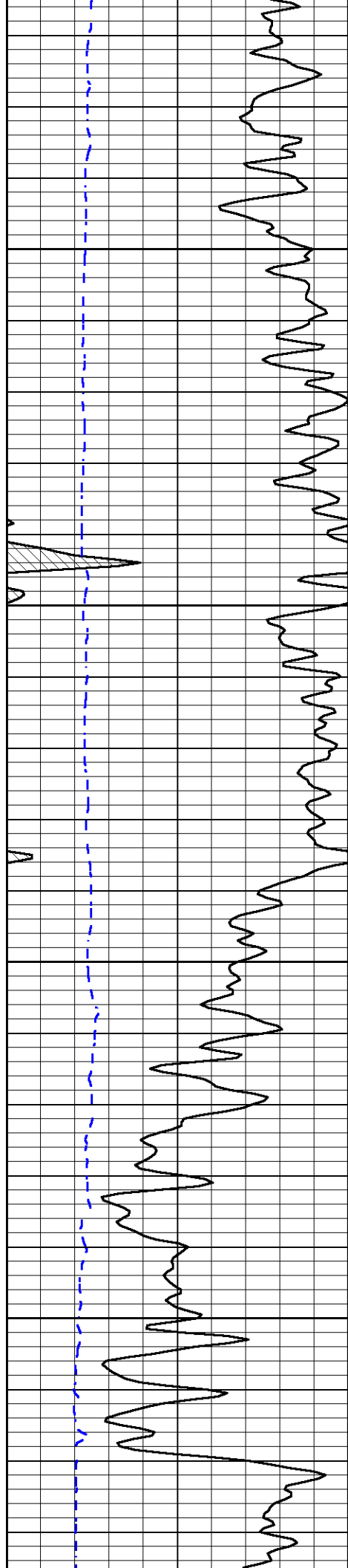
Database File	blacktea_youkin_c_1hd.db
Dataset Pathname	DIL/btstk
Presentation Format	sonic
Dataset Creation	Thu Mar 12 22:35:55 2015
Charted by	Depth in Feet scaled 1:240

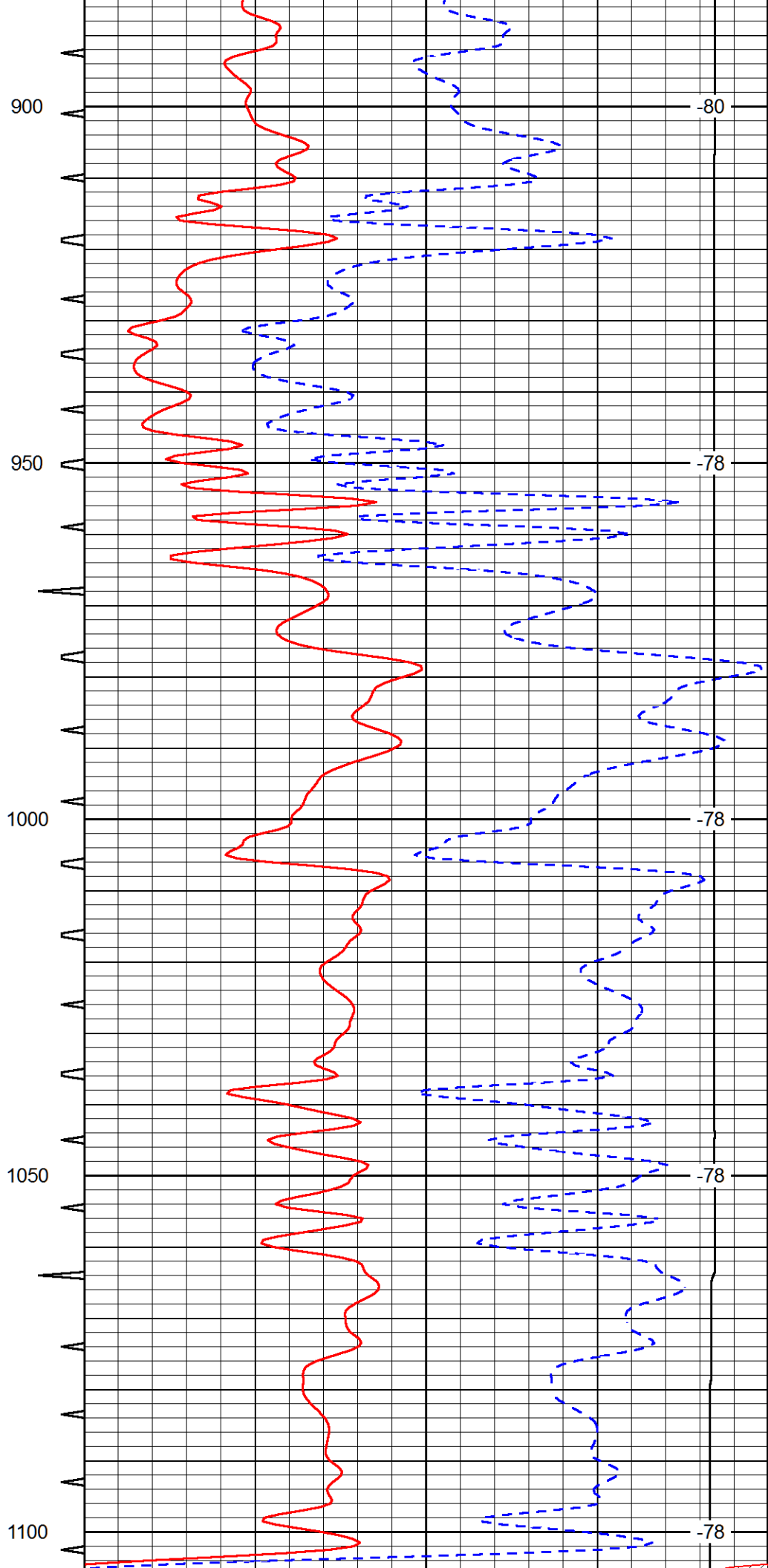
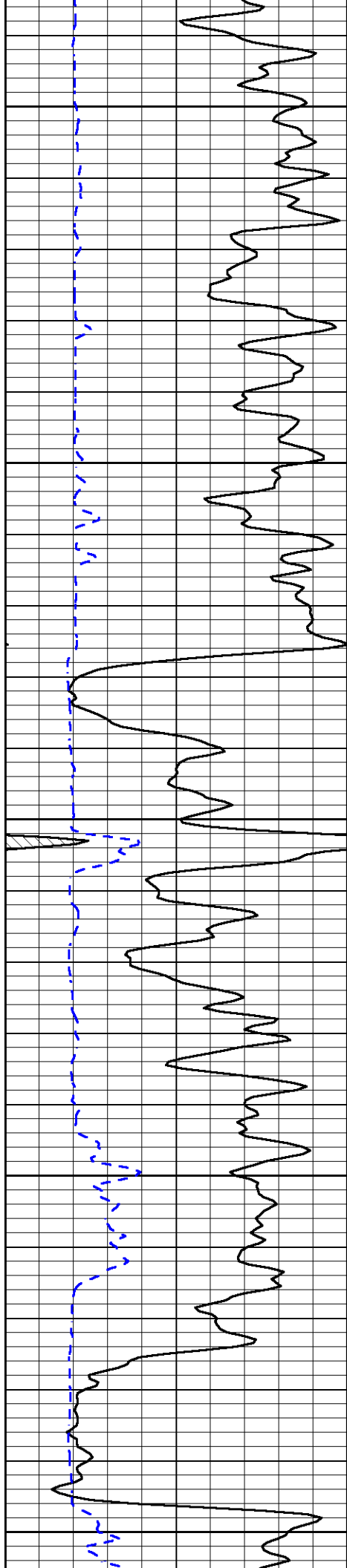
0	Gamma Ray	150	Sonic Int	140	Delta Time (usec/ft)	40
150	Gamma Ray	300	5	0	Sonic Porosity	-10
6	dCAL (GAPI)	16		15000	LTEN (lb)	0

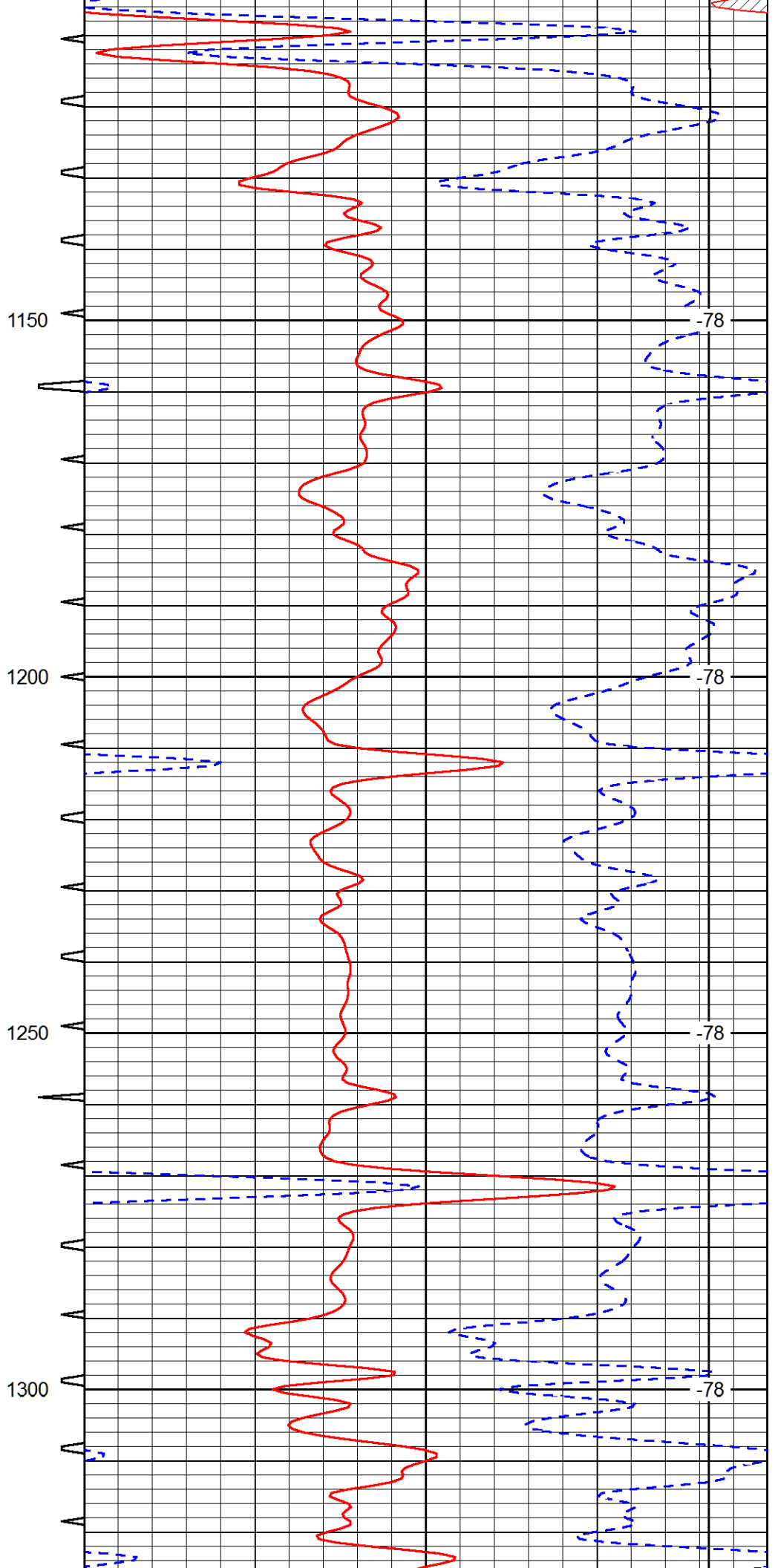
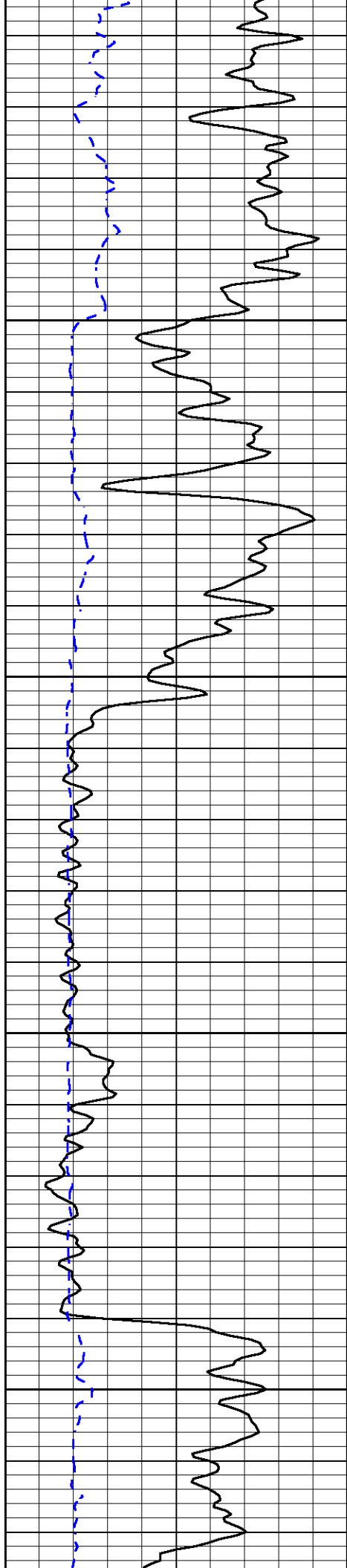
LSPD

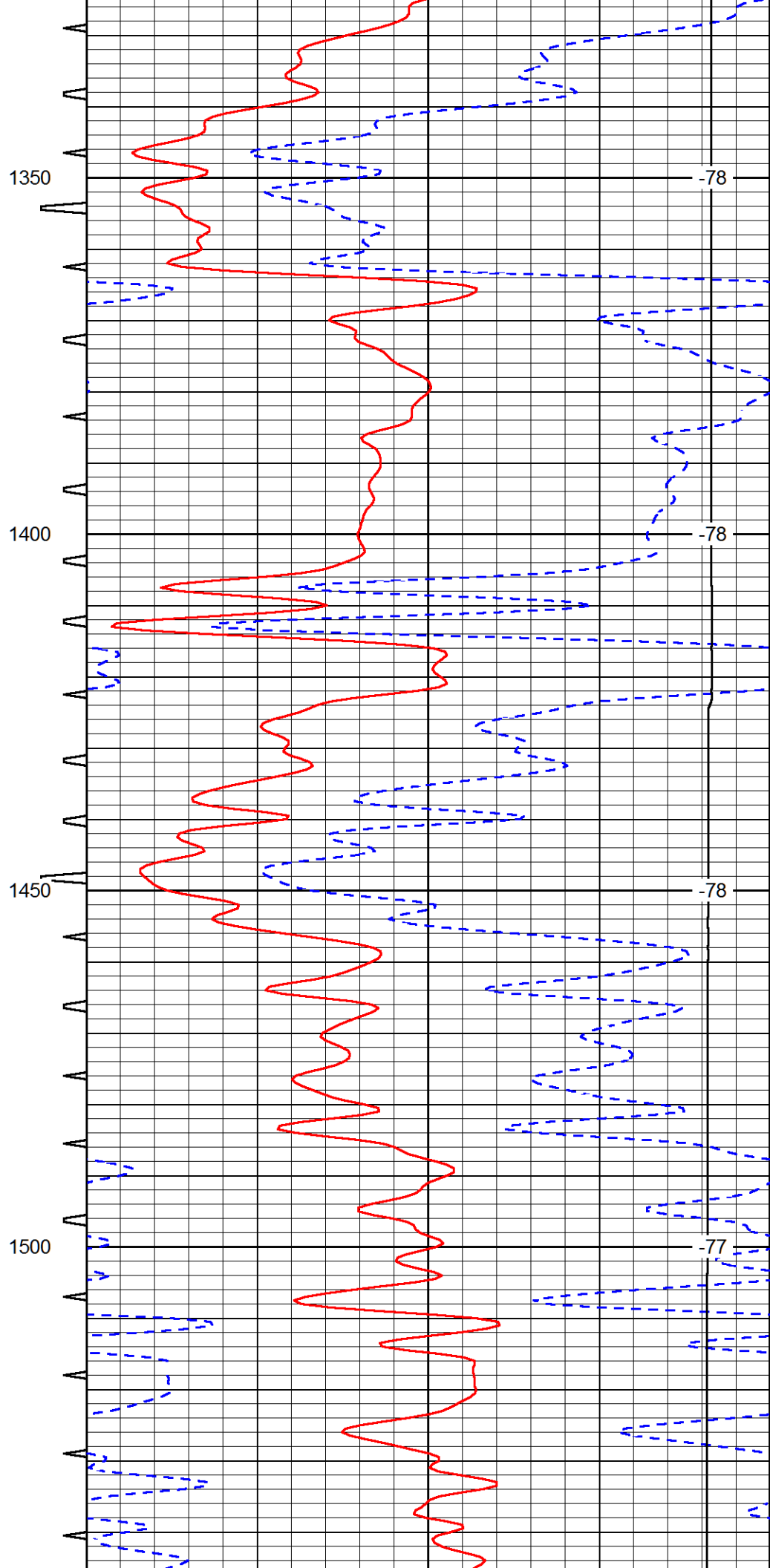
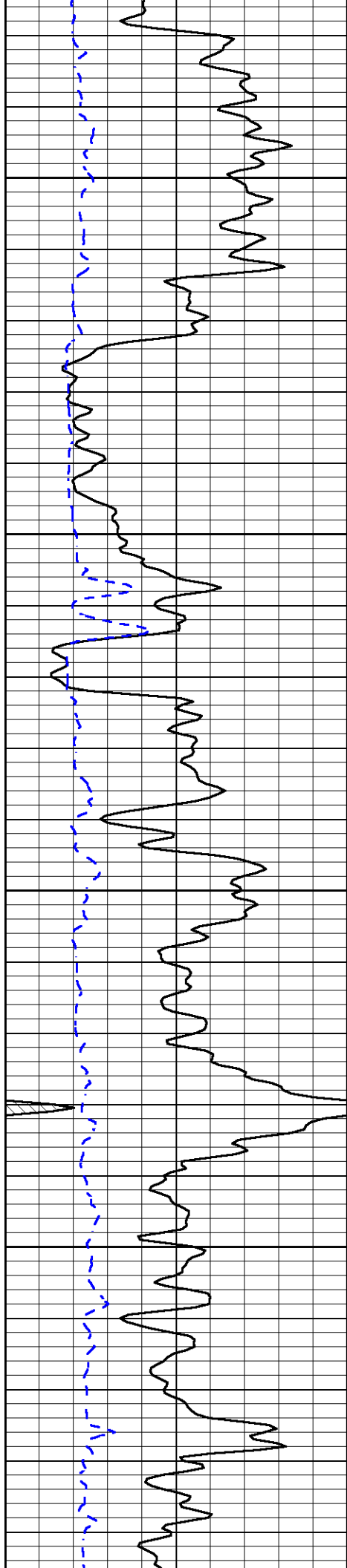


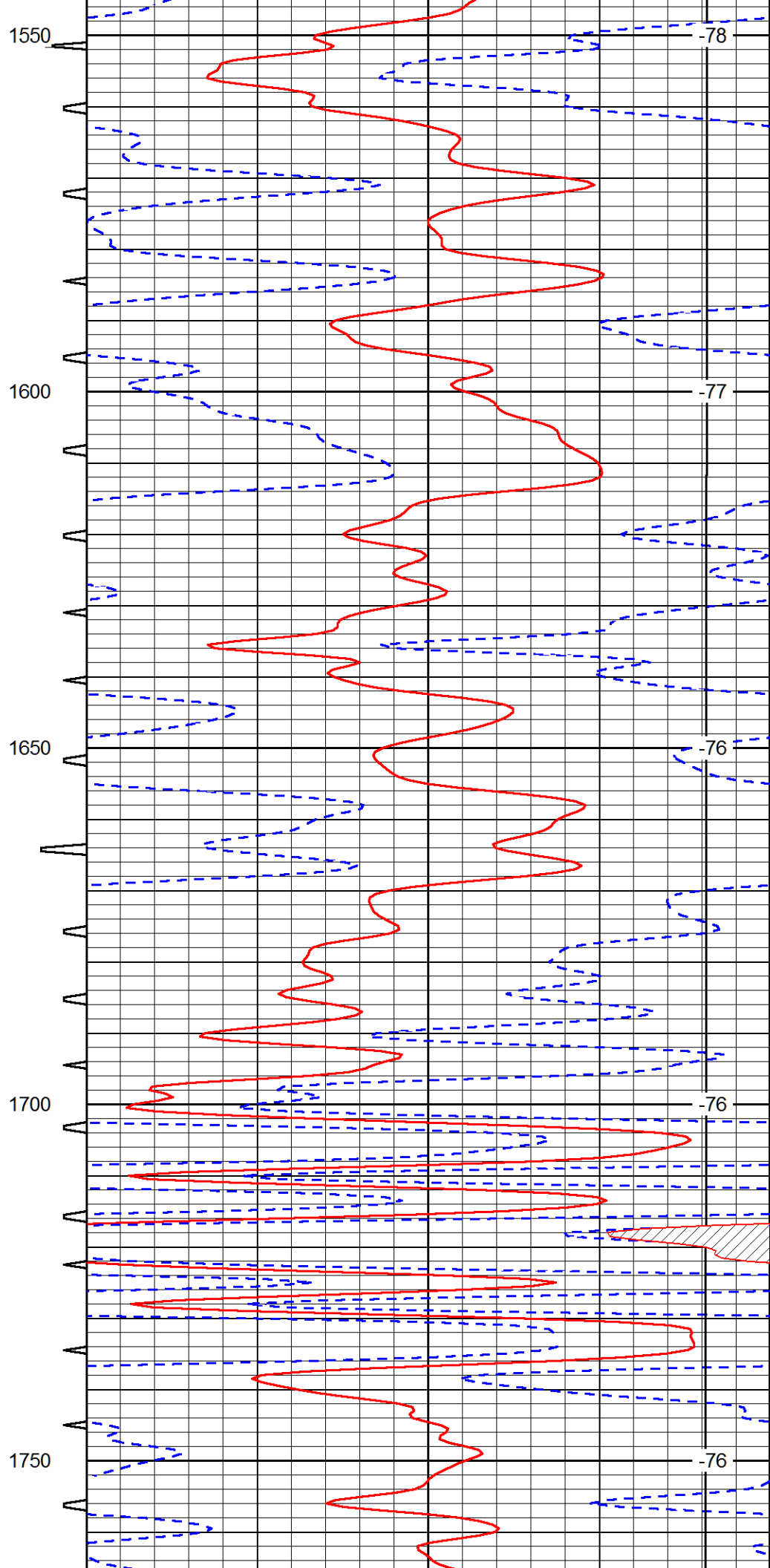
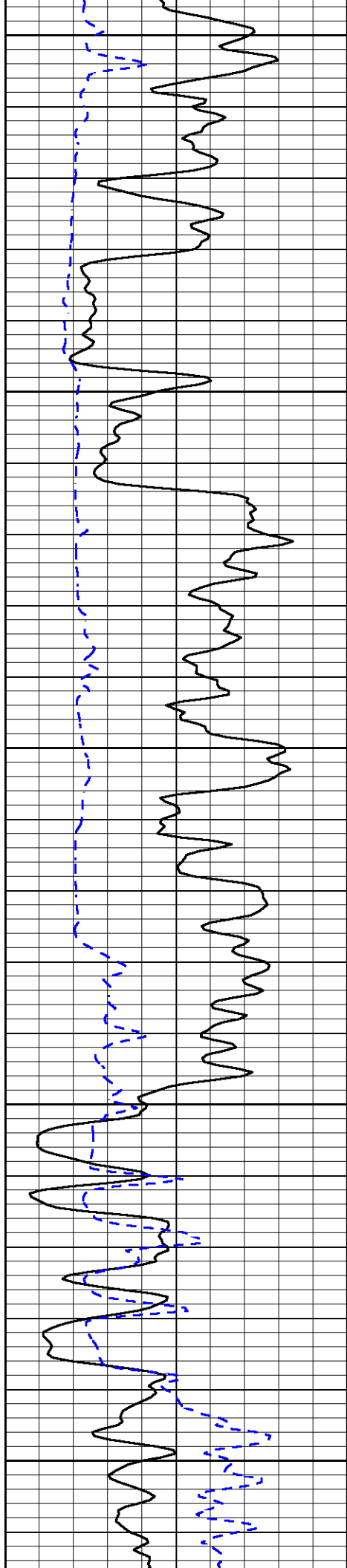


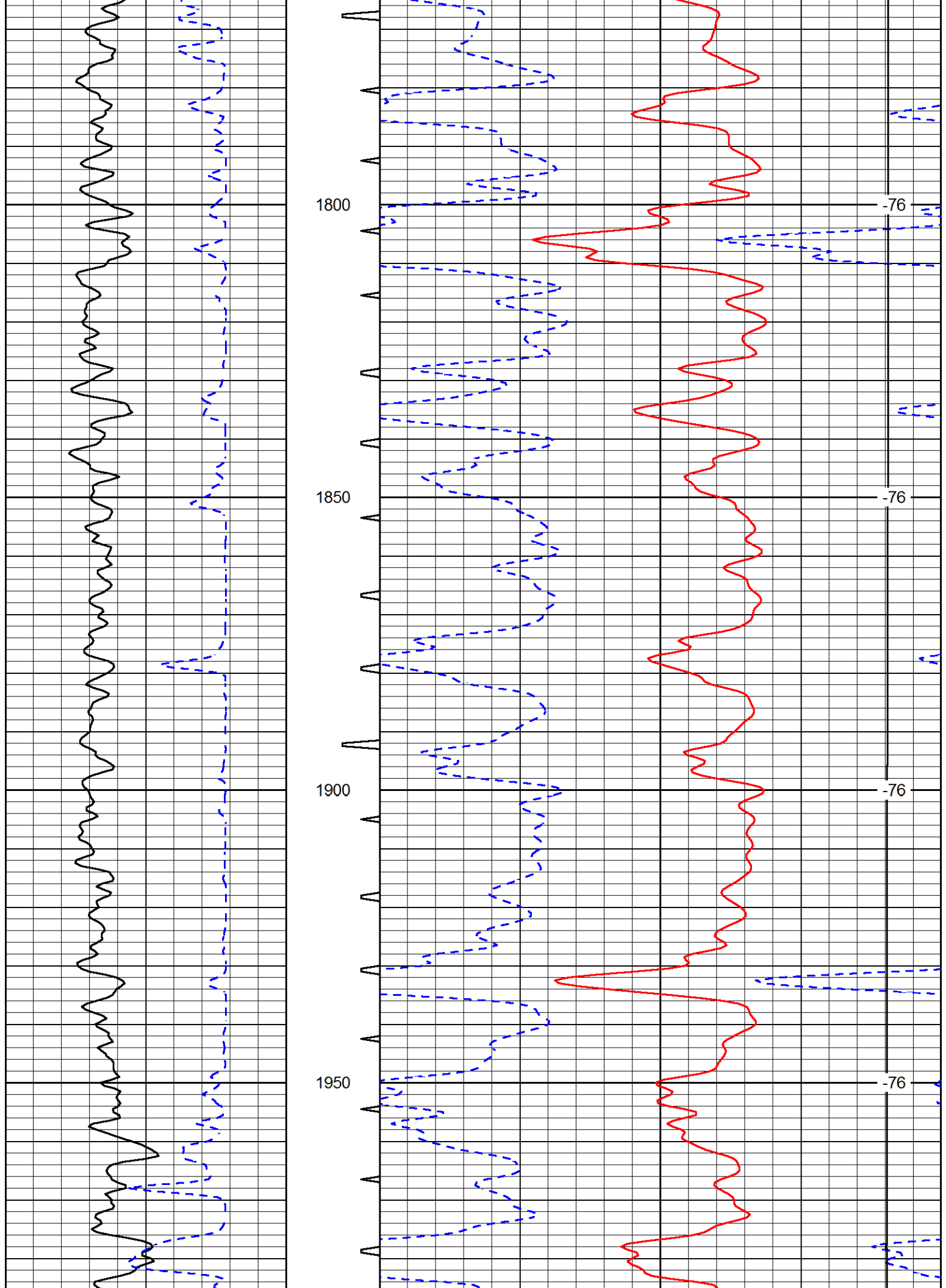


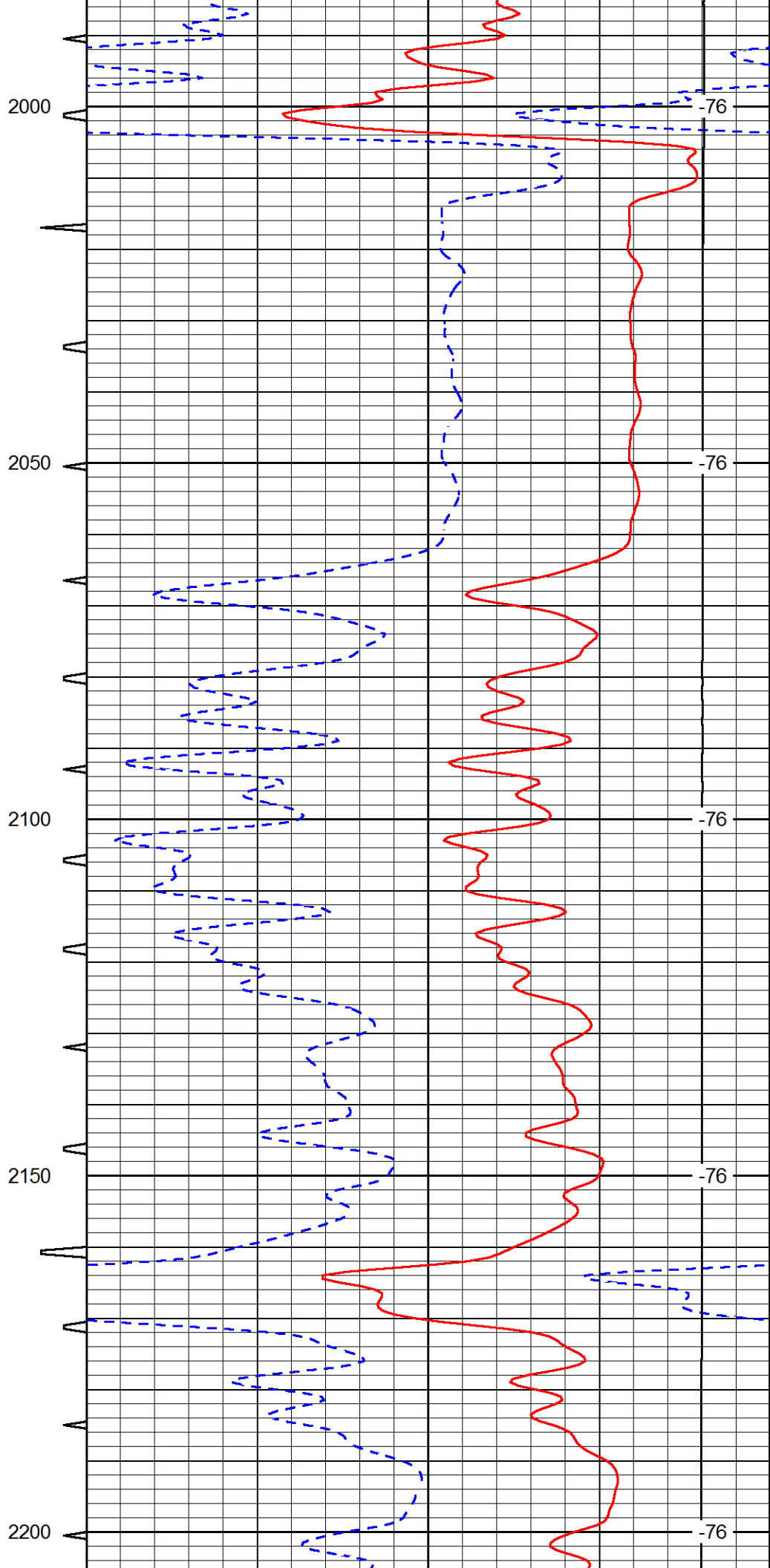
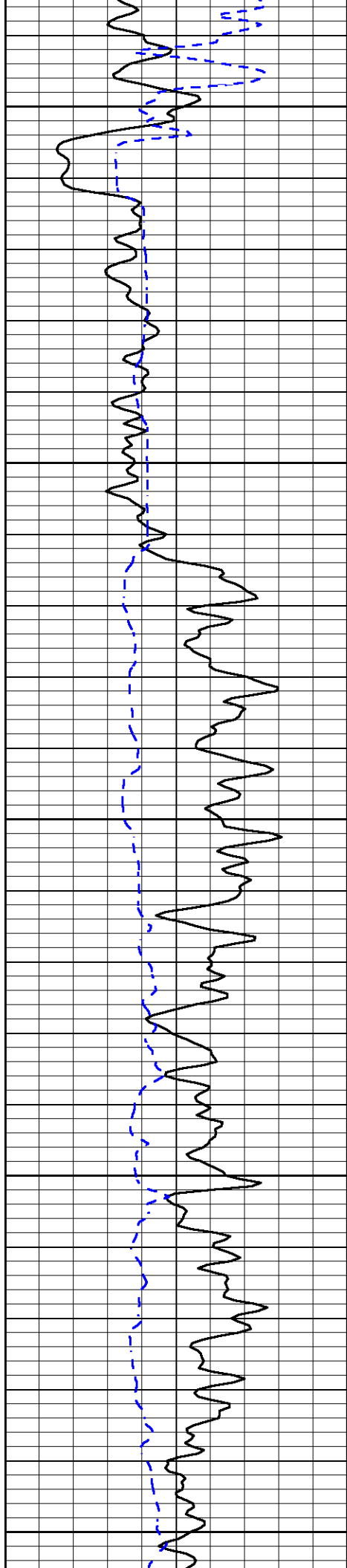


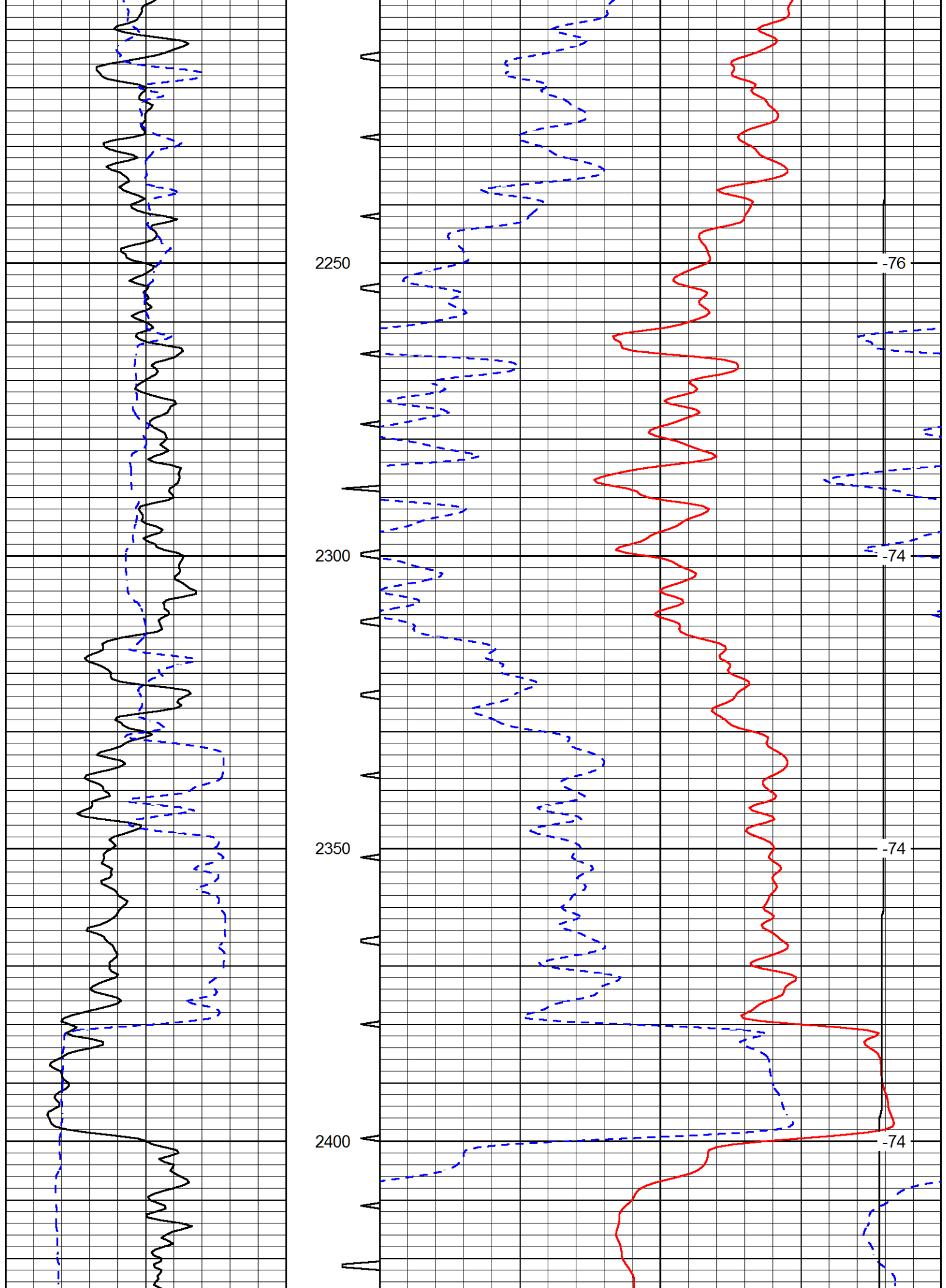


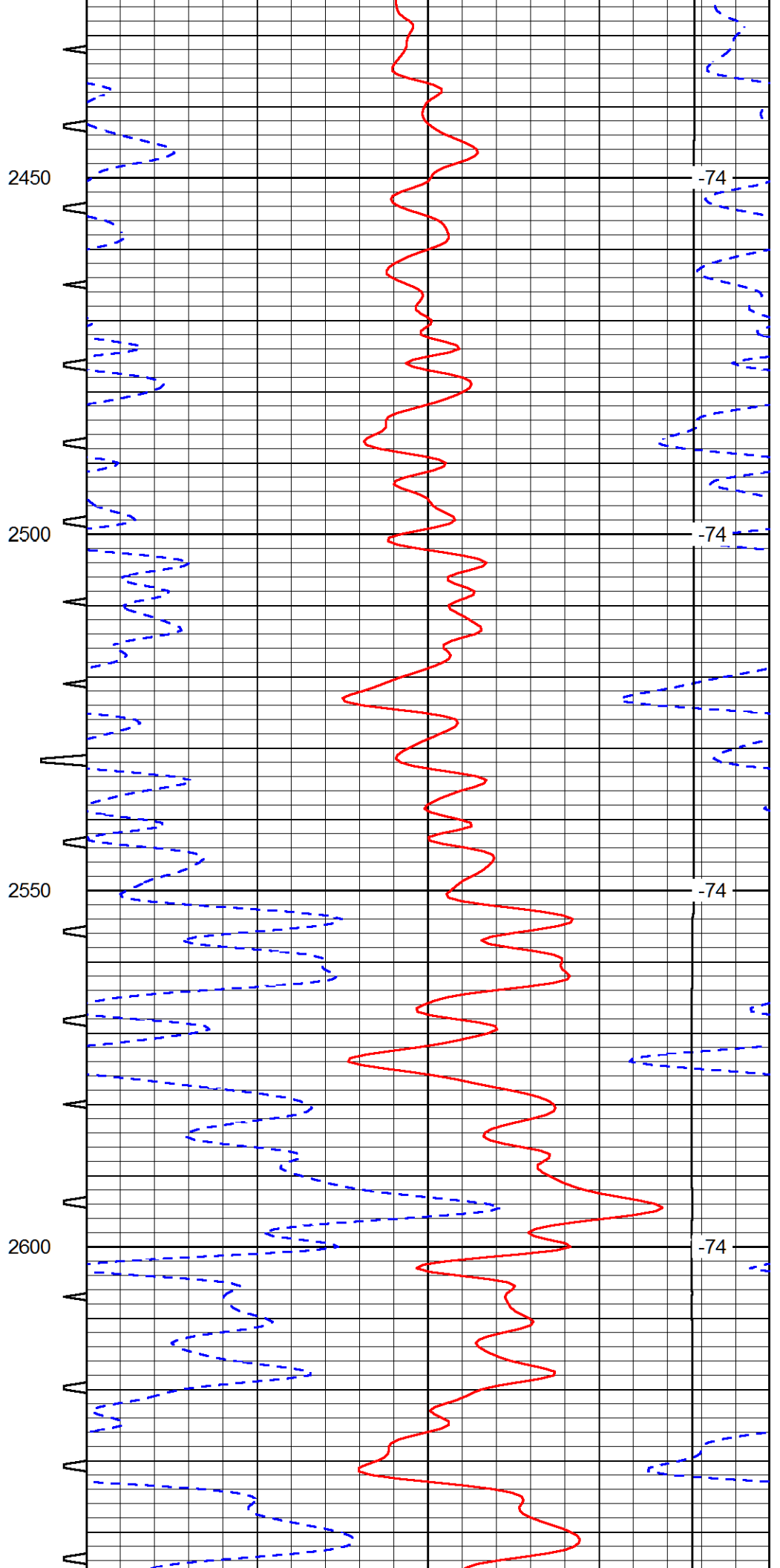
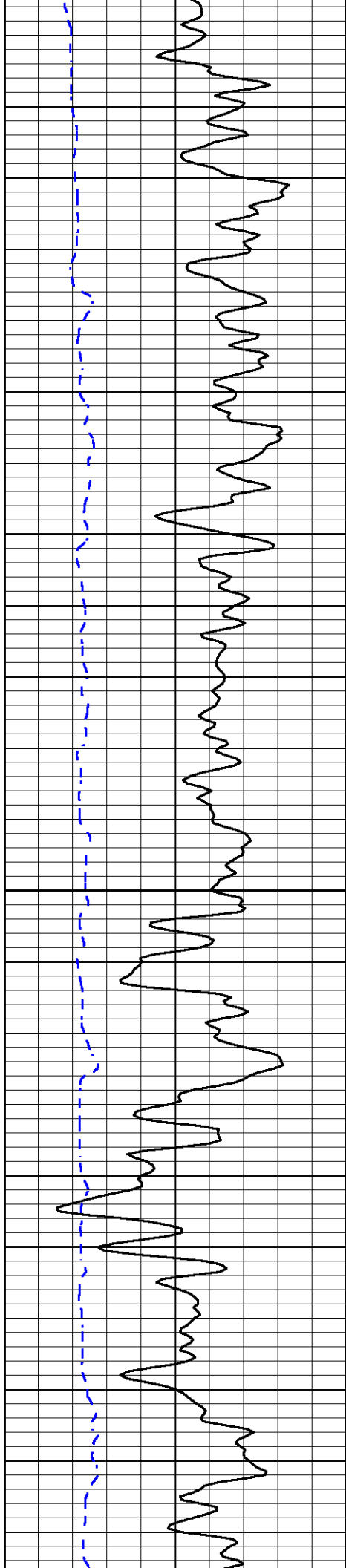


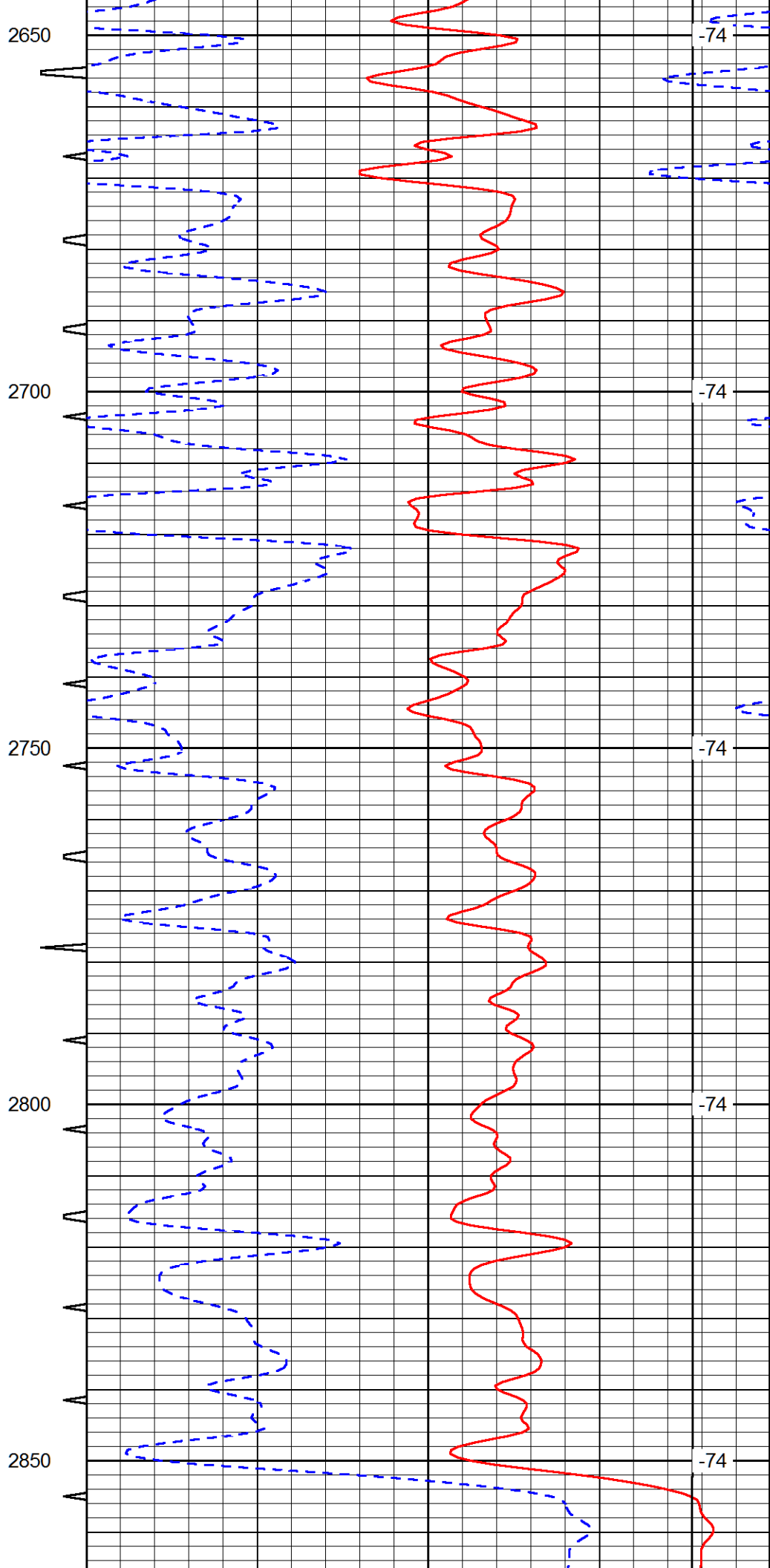
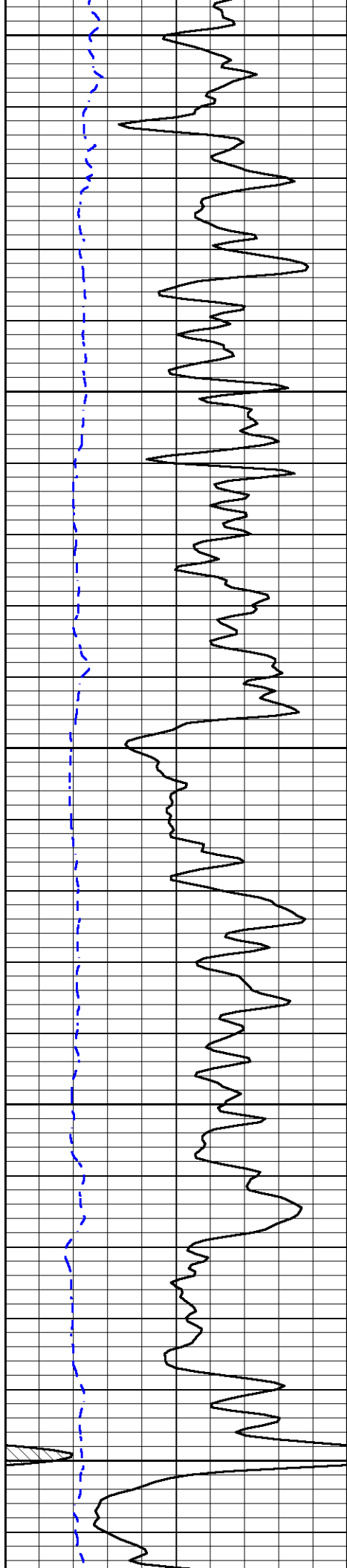


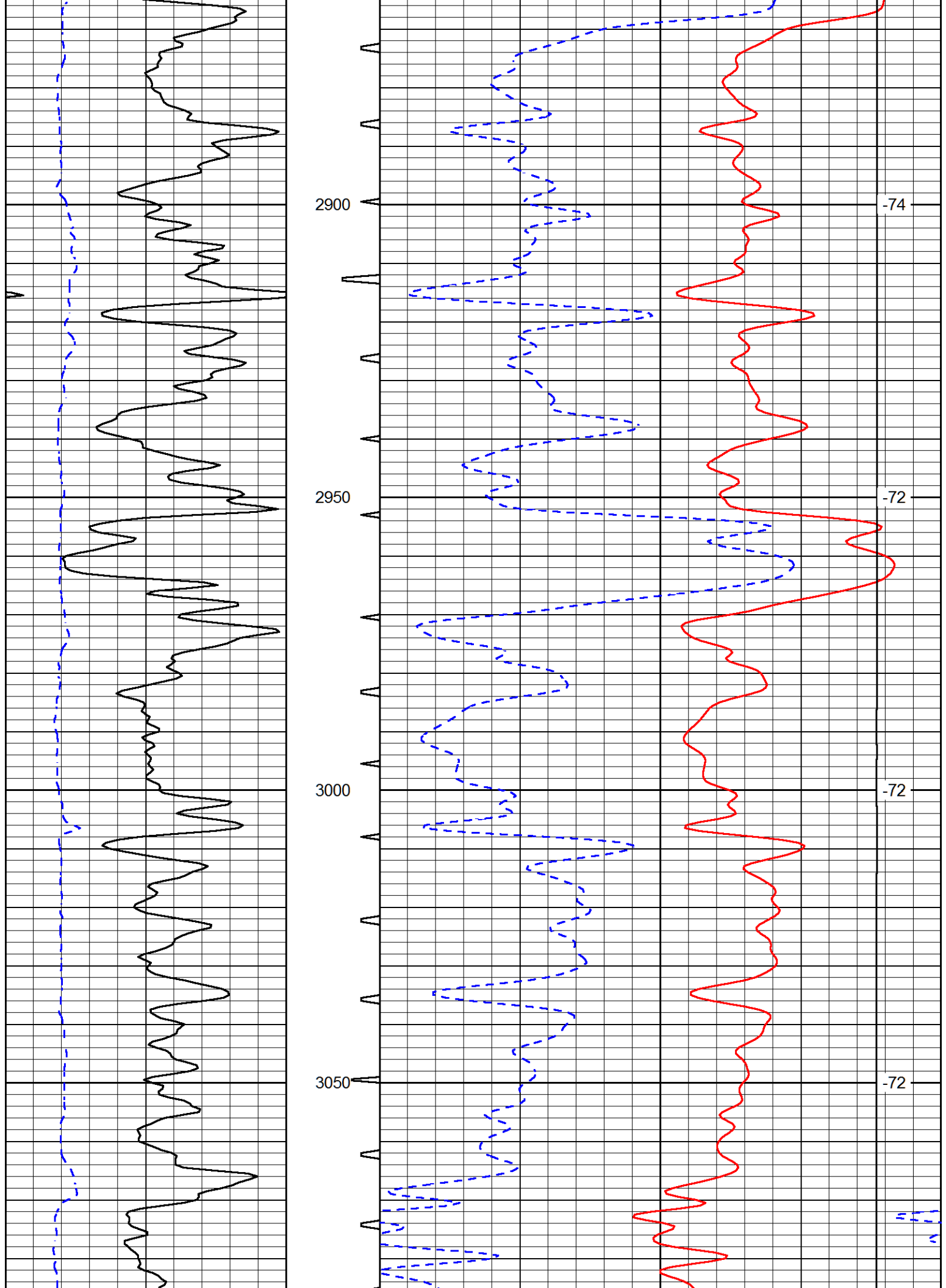


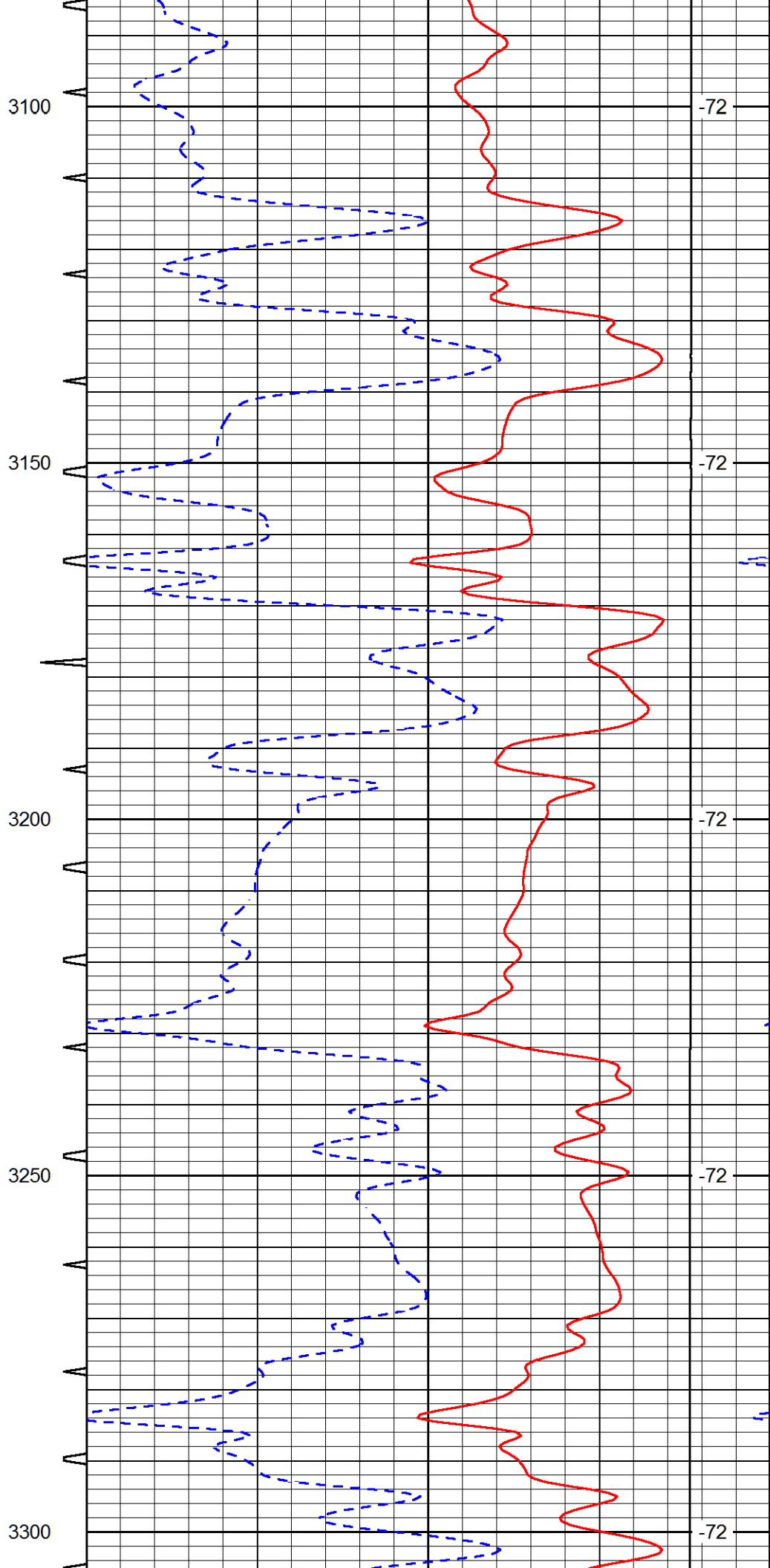
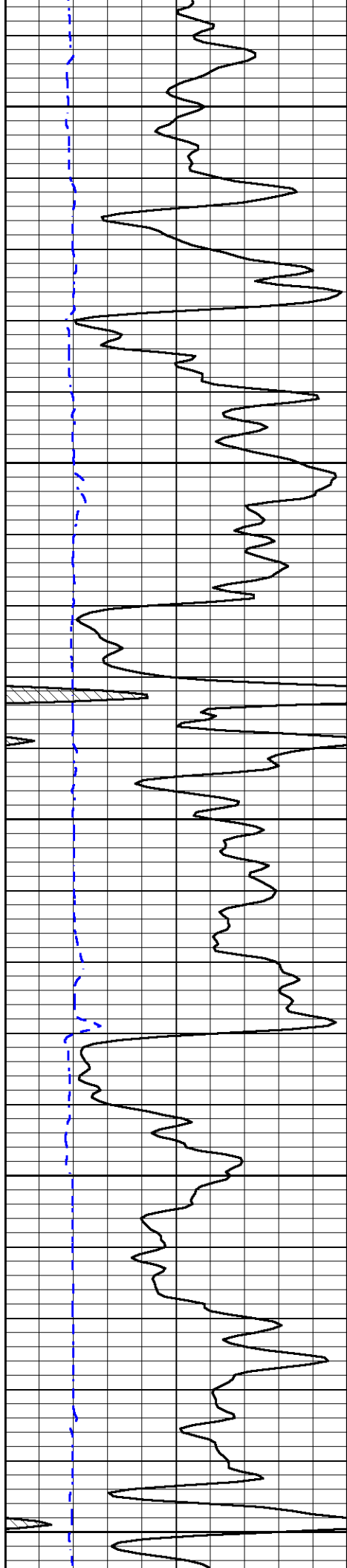


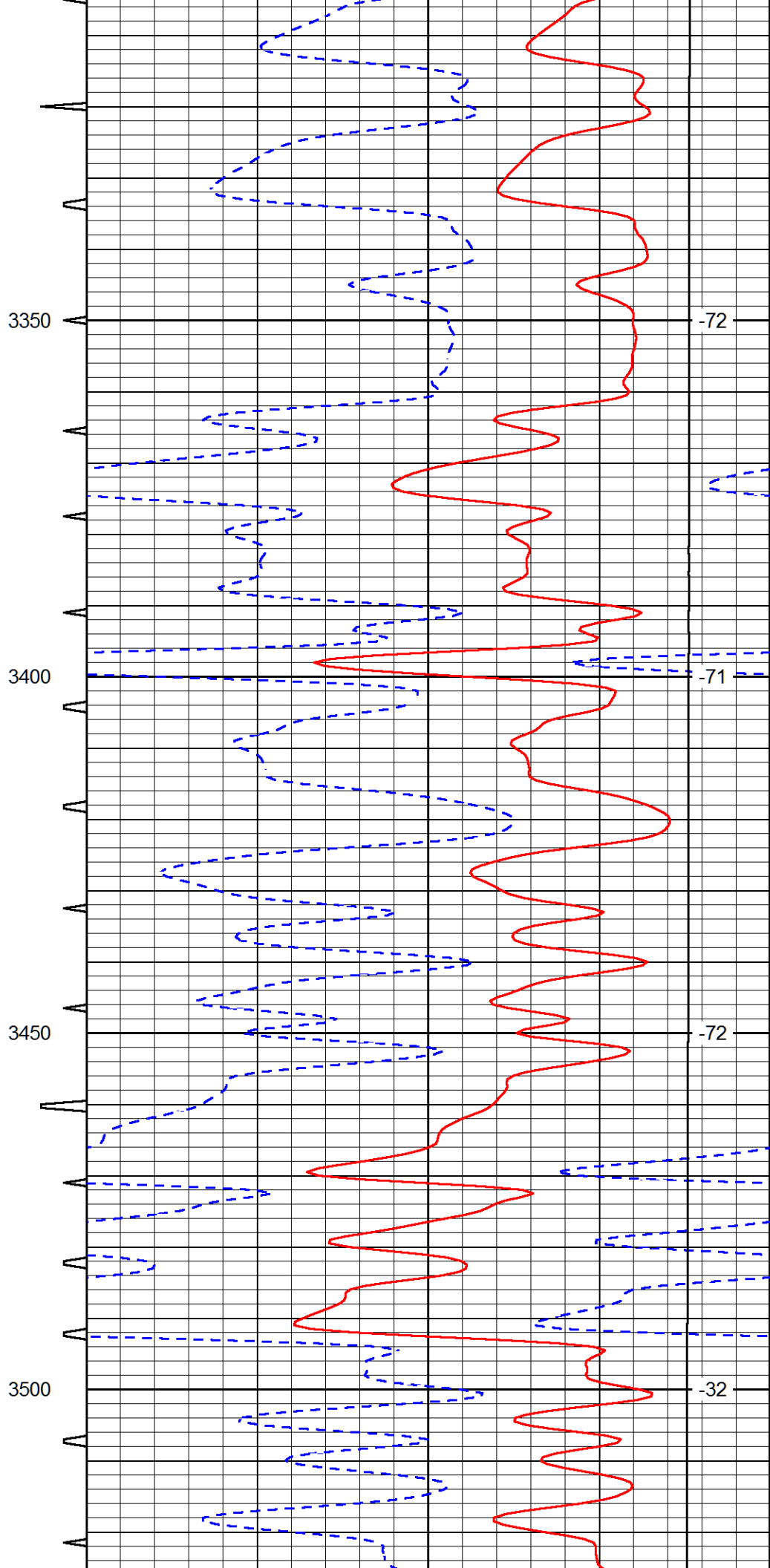
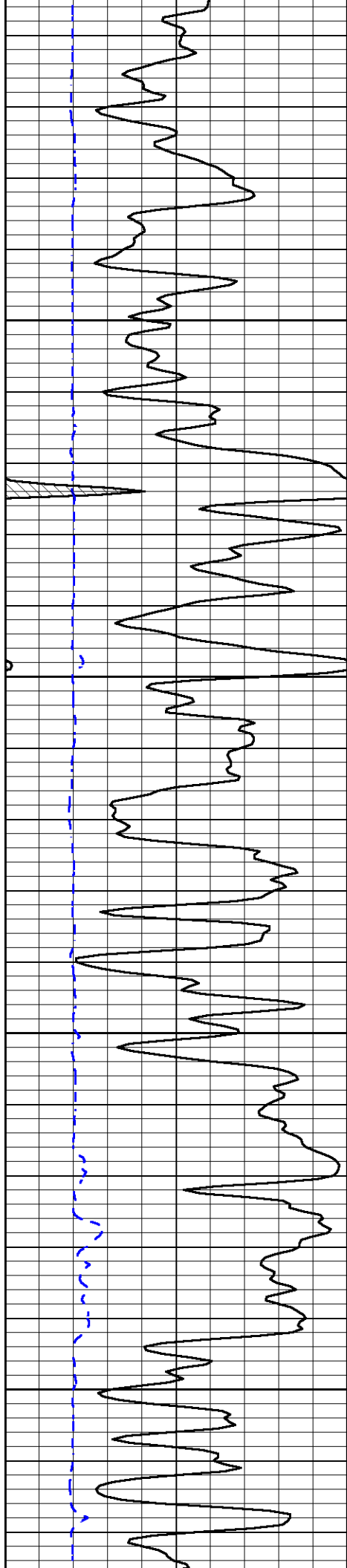


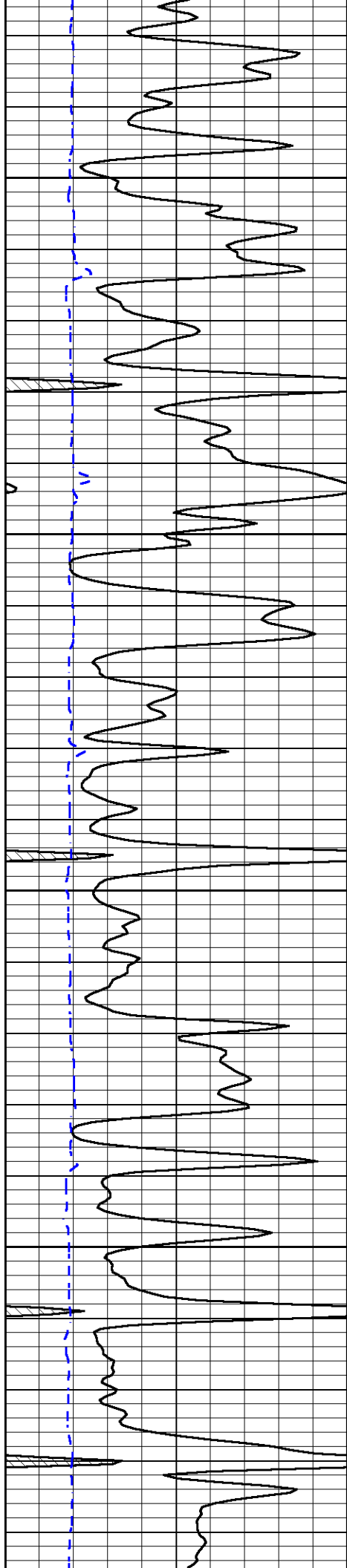










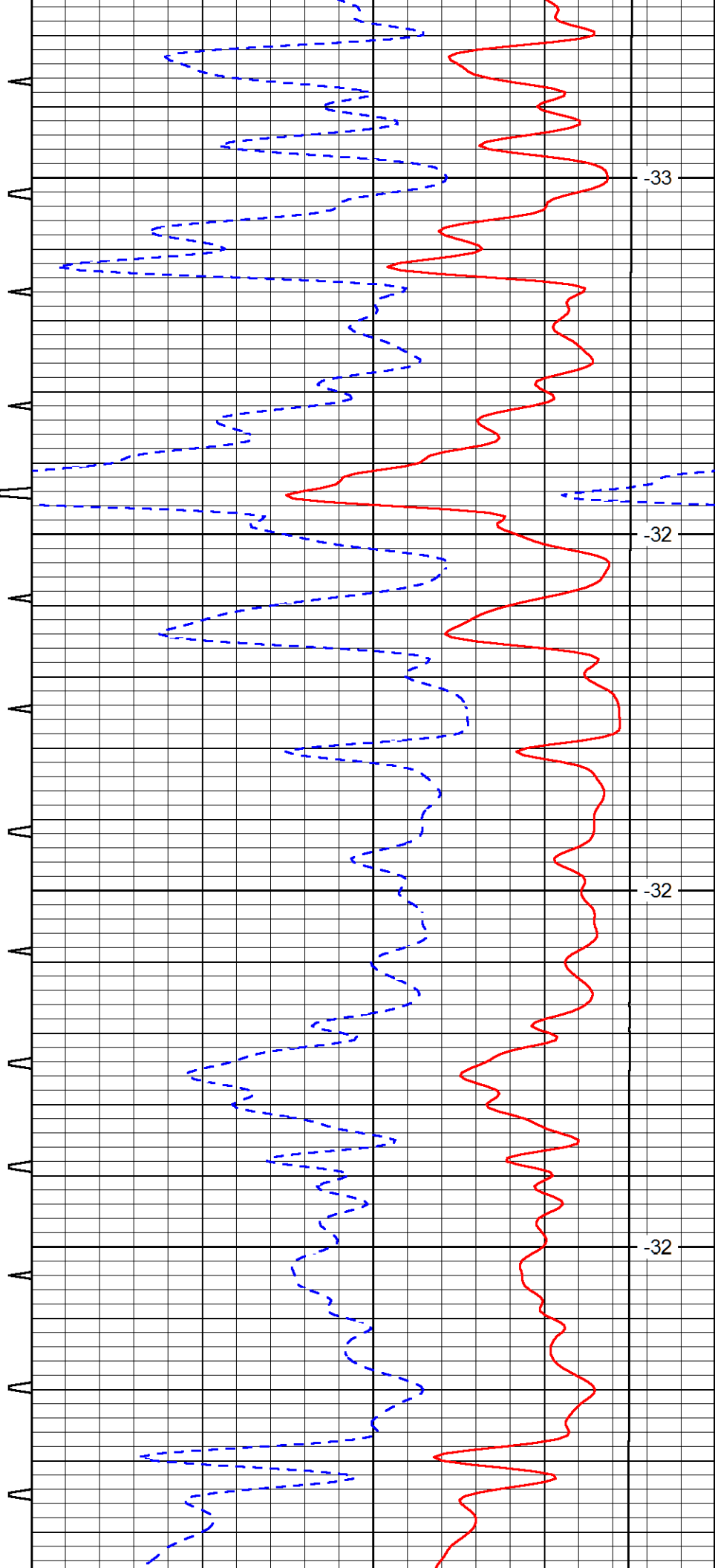


3550

3600

3650

3700



-33

-32

-32

-32

