



Pioneer Energy Services

Microresistivity Log

API No.	15-109-21396-00-00	
Company	Black Tea Oil, LLC	
Well	Younkin C #1	
Field	N/A	
County	Logan	State
Location	1175' FSL & 750' FWL	
Sec: 26	Twp: 14S	Rge: 34W
Other Services	CNL/CDL DIL/BHCS	

Permanent Datum	Ground Level	Elevation 2984
Log Measured From	Kelly Bushing	9 Ft. Above Perm. Datum
Drilling Measured From	Kelly Bushing	
Date	3/12/2015	

Run Number	Two
Depth Driller	4680
Depth Logger	4678
Bottom Logged Interval	4677
Top Log Interval	3500
Casing Driller	8.625 @ 259
Casing Logger	260
Bit Size	7.875
Type Fluid in Hole	Chemical
Salinity, ppm CL	14,000
Density / Viscosity	9.0 58
pH / Fluid Loss	10.0 8.0
Source of Sample	Flowline
Rm @ Meas. Temp	0.25 @ 78
Rmf @ Meas. Temp	0.19 @ 78
Rmc @ Meas. Temp	0.34 @ 78
Source of Rmf / Rmc	Charts
Rm @ BHT	0.16 @ 123
Operating Rig Time	5 Hours
Max Rec. Temp. F	123
Equipment Number	15
Location	Hays
Recorded By	D.Kerr
Witnessed By	Kevin Bailey

<<< Fold Here >>>

All interpretations are opinions based on inferences from electrical or other measurements and we cannot and do not guarantee the accuracy or correctness of any interpretation, and we shall not, except in the case of gross or willful negligence on our part, be liable or responsible for any loss, costs, damages, or expenses incurred or sustained by anyone resulting from any interpretation made by any of our officers, agents or employees. These interpretations are also subject to our general terms and conditions set out in our current Price Schedule.

Comments

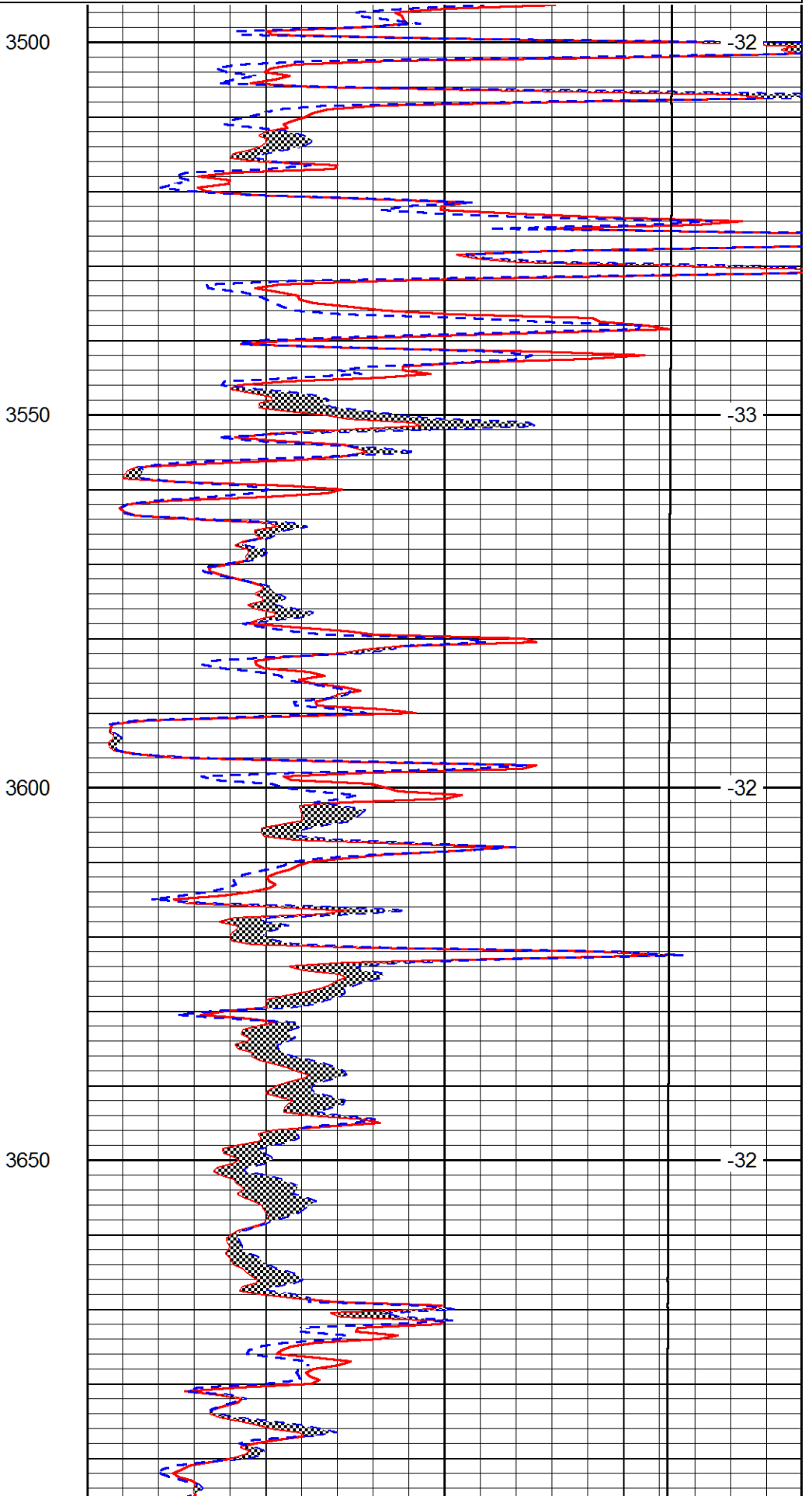
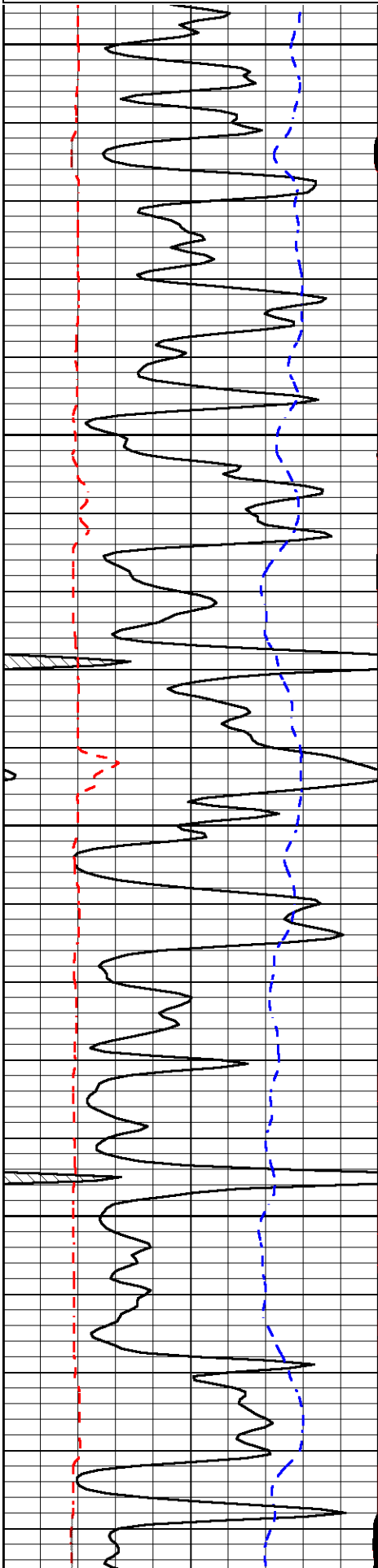
Thank you for using Pioneer Energy Services
785.625.3858

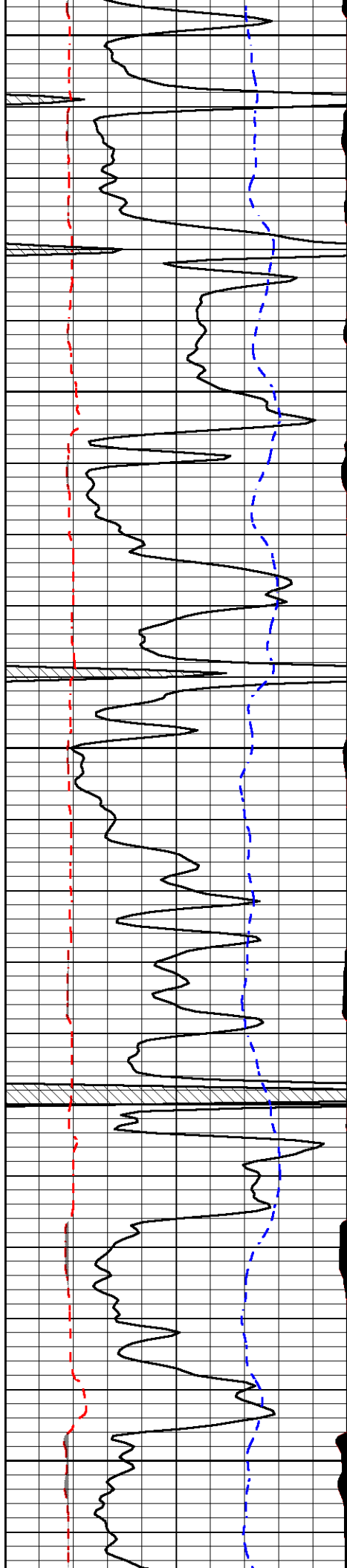
Monument KS, 22 South to Indian RD,
West to 320 RD, 1 1/4 South, East and North Into

Database File	blacktea_youkin_c_1hd.db
Dataset Pathname	DIL/btstk
Presentation Format	micro
Dataset Creation	Thu Mar 12 22:35:55 2015
Charted by	Depth in Feet scaled 1:240

0	Gamma Ray	150
6	MCAL (GAPI)	16
2.875	Mud Cake (GAPI)	7.875
-200	SP (mV)	0

0	Micro Inverse 1 X 1	40
0	Micro Normal 2"	40
10000	Line Weight	0
		LSPD





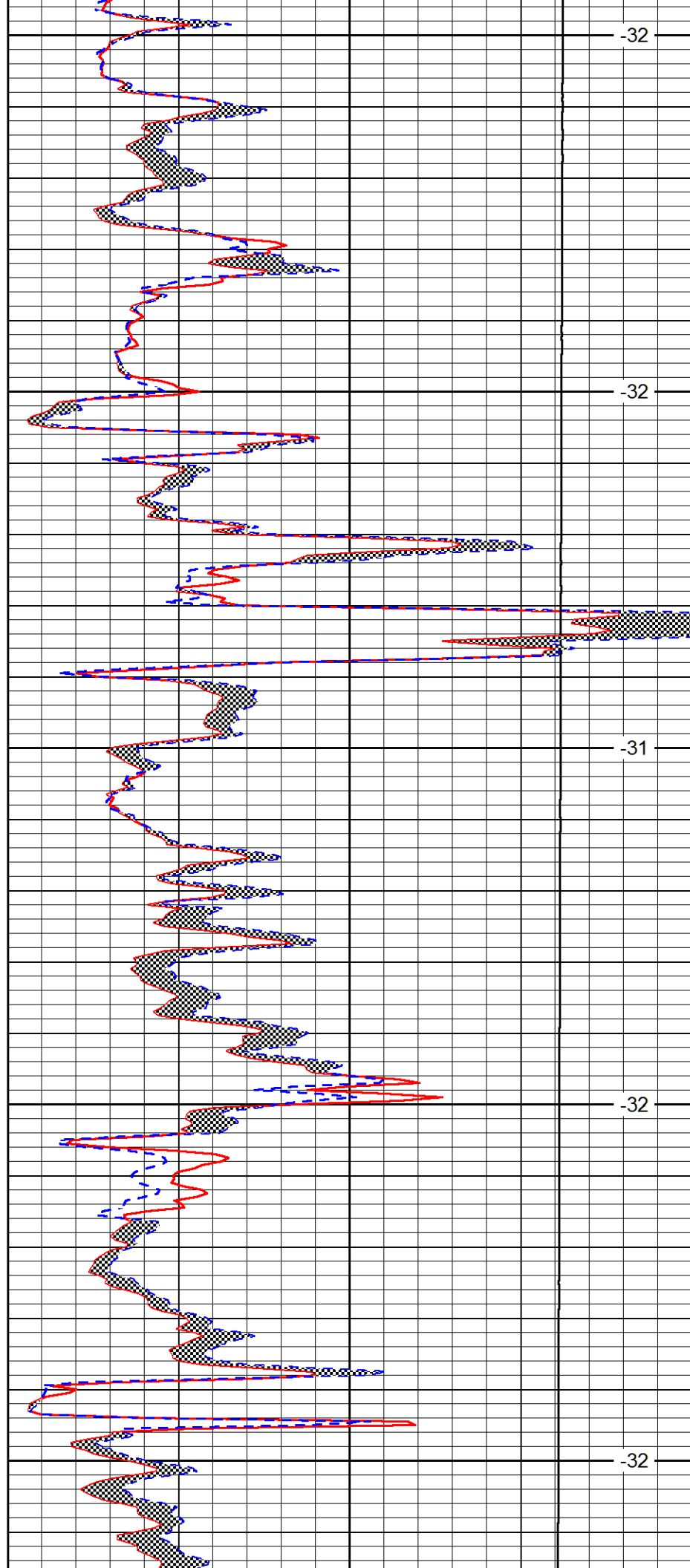
3700

3750

3800

3850

3900



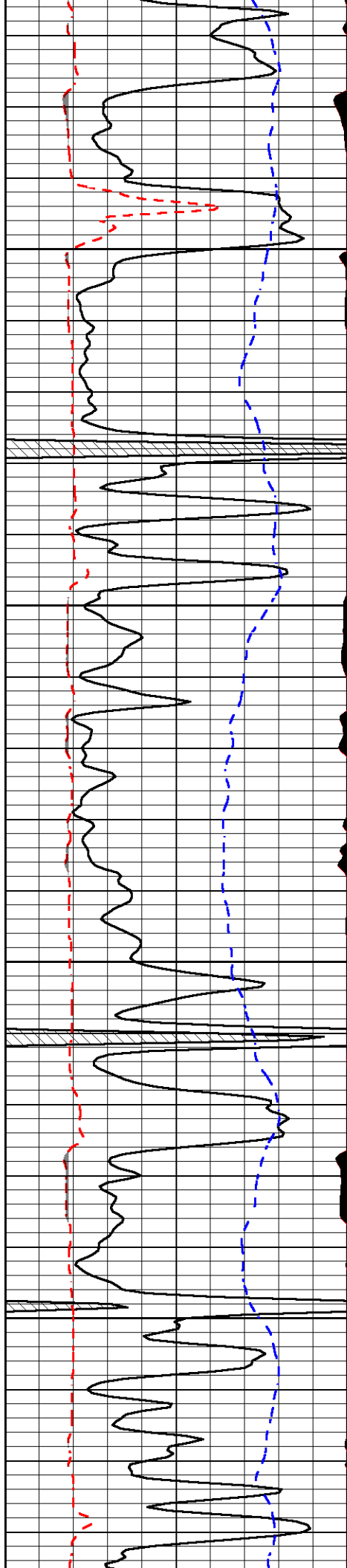
-32

-32

-31

-32

-32

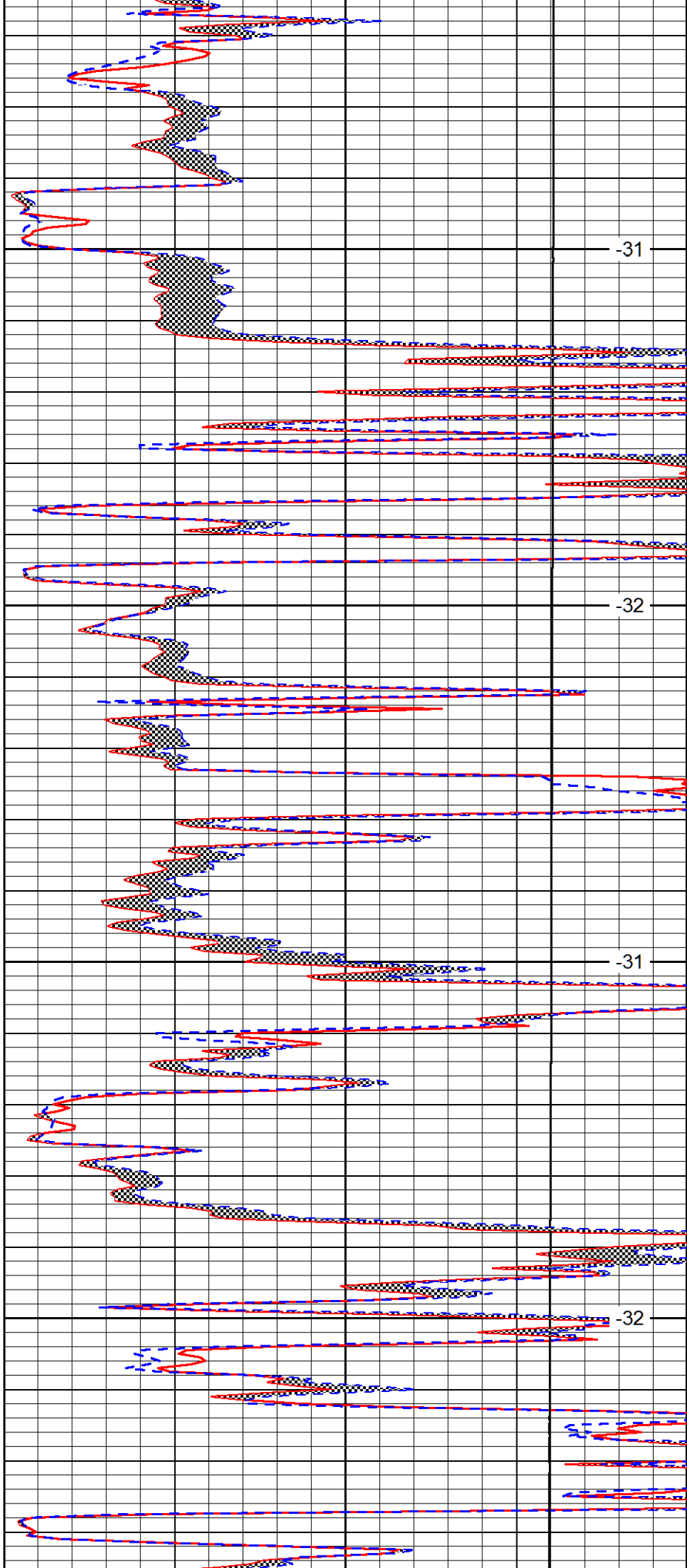


3950

4000

4050

4100

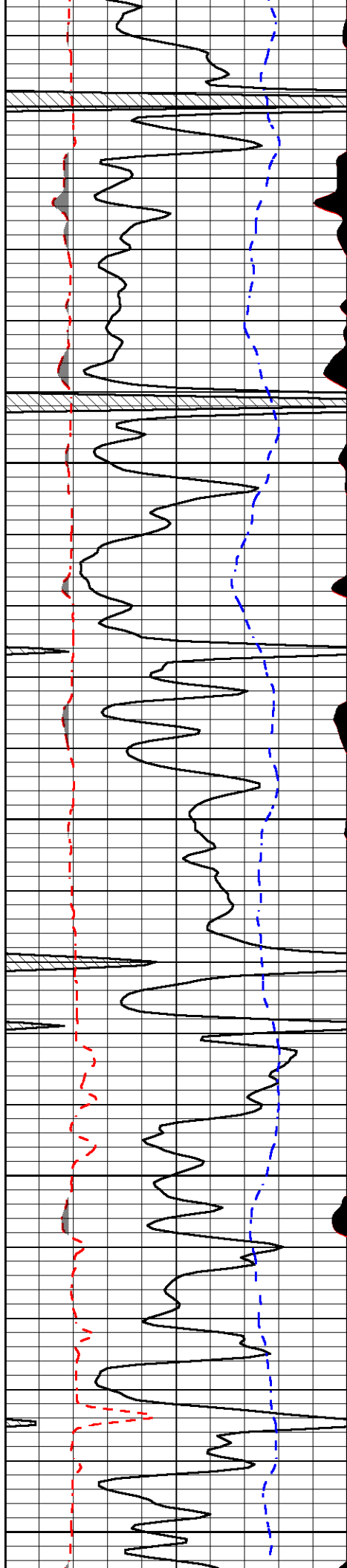


-31

-32

-31

-32



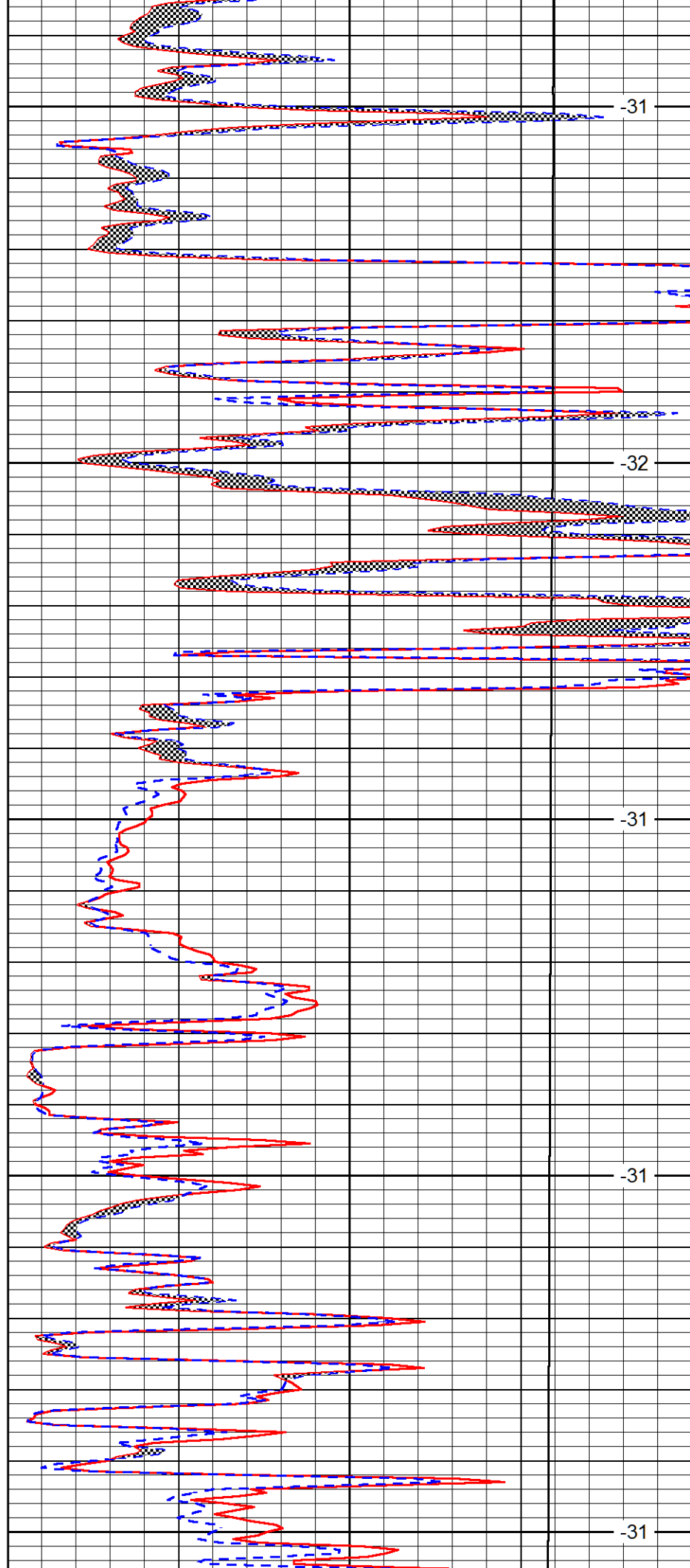
4150

4200

4250

4300

4350



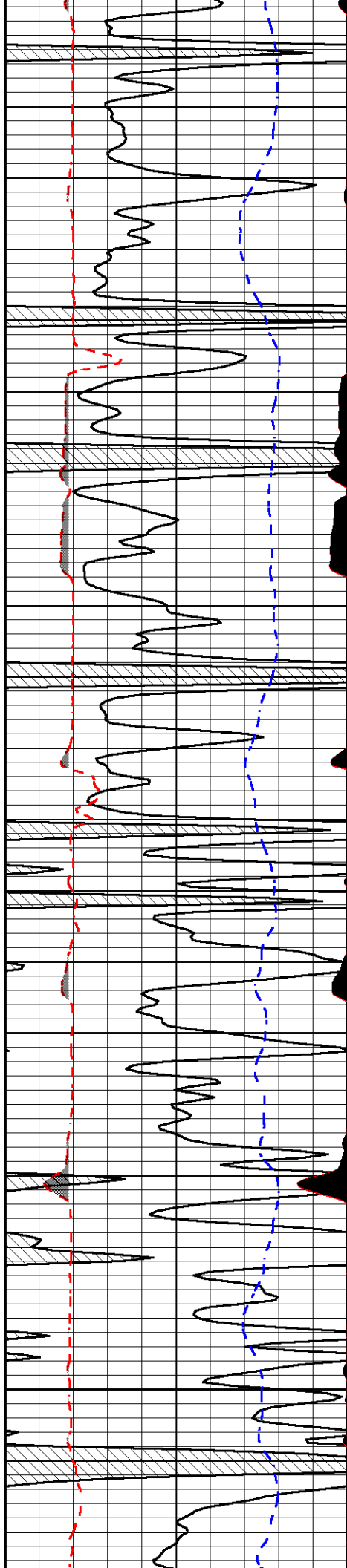
-31

-32

-31

-31

-31

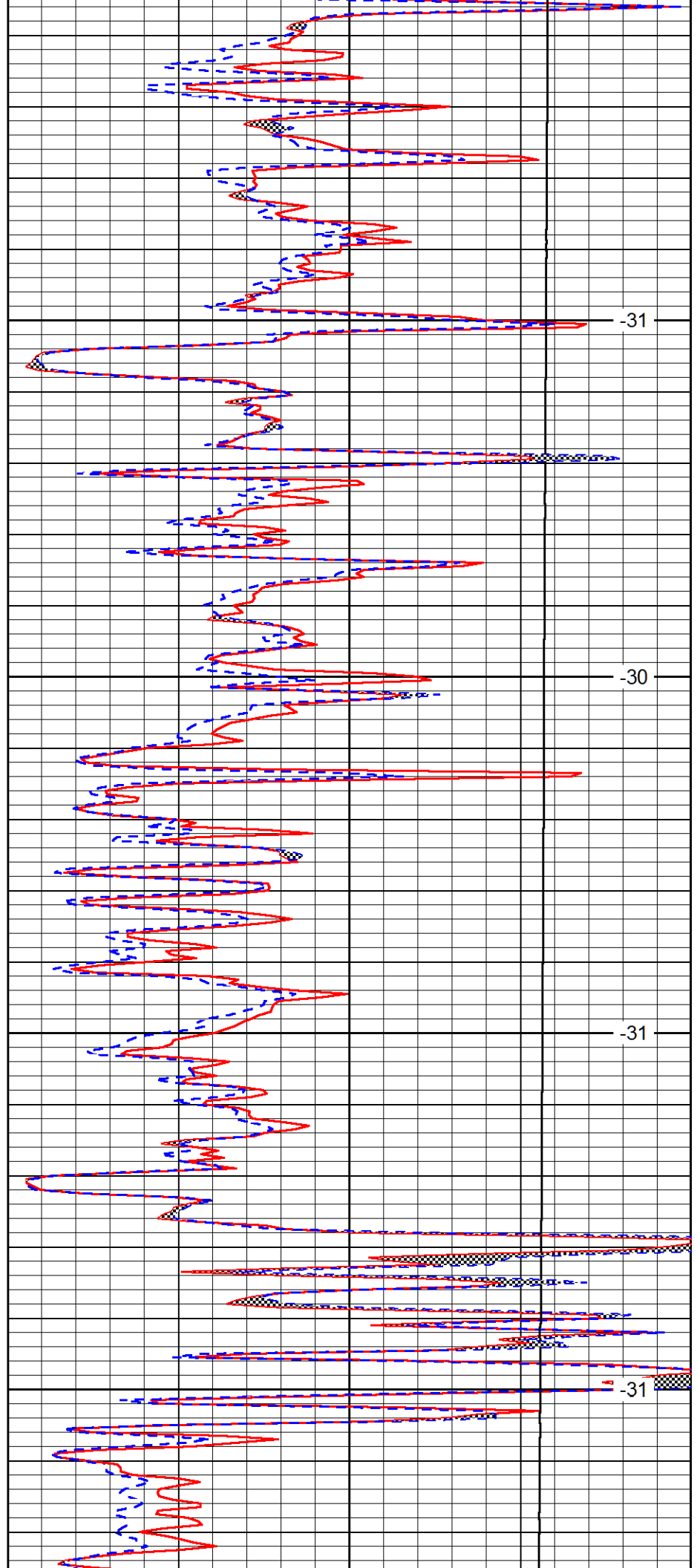


4400

4450

4500

4550

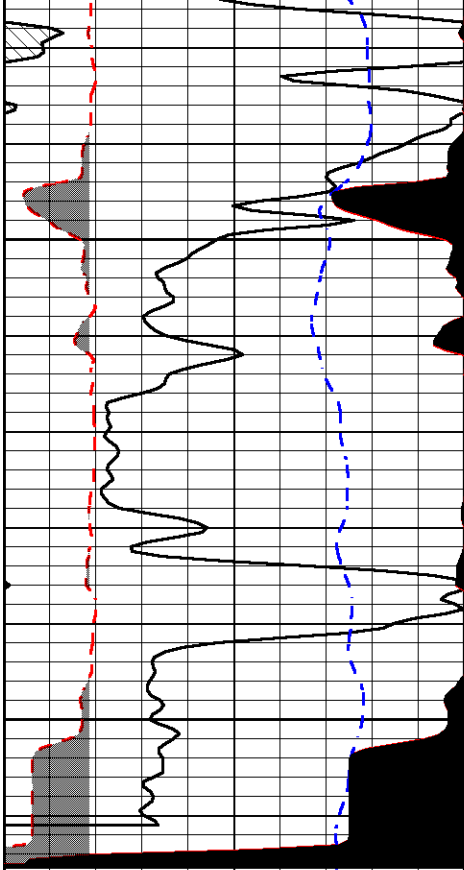


-31

-30

-31

-31



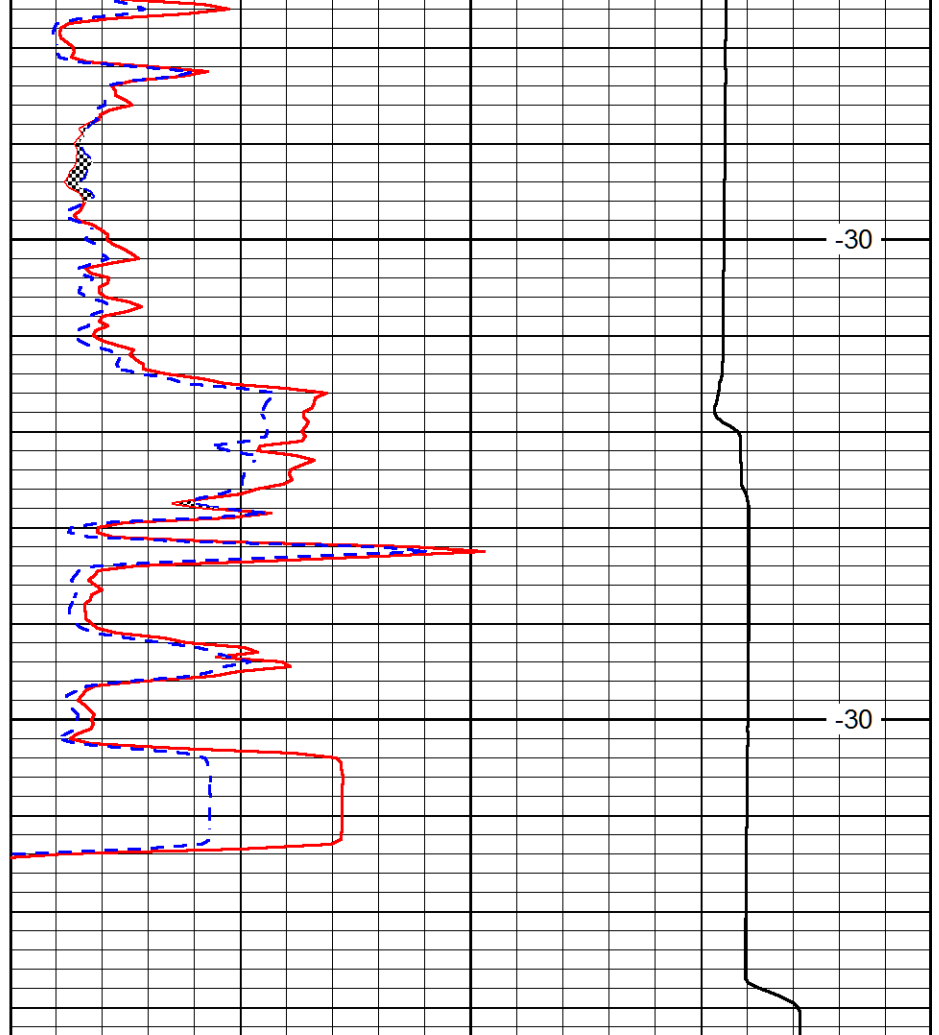
0	Gamma Ray	150
6	MCAL (GAPI)	16
2.875	Mud Cake (GAPI)	7.875
-200	SP (mV)	0

4600

-30

4650

-30



0	Micro Inverse 1 X 1	40
0	Micro Normal 2"	40
10000	Line Weight	0

LSPD