



PIONEER

Pioneer Energy Services

Dual Compensated Porosity Log

API No.

15-109-21396-00-00

Company Black Tea Oil, LLC

Well Younkin C #1

Field N/A

County Logan

State Kansas

Location

1175' FSL & 750' FWL

Sec: 26

Twp: 14S

Rge: 34W

Other Services
DIL
MEL/BHCS

Permanent Datum Ground Level Elevation 2984

Log Measured From Kelly Bushing 9 Ft. Above Perm. Datum

Drilling Measured From Kelly Bushing

K.B. 2993
D.F. 2984
G.L. 2984

Date 3/12/2015

Run Number One

Type Log CNL / CDL

Depth Driller 4680

Depth Logger 4678

Bottom Logged Interval 4657

Top Logged Interval 3500

Type Fluid In Hole Chemical

Salinity, PPM CL 14,000

Density 9.0

Level Full

Max. Rec. Temp. F 123

Operating Rig Time 5 Hours

Equipment -- Location 15 Days

Recorded By D.Kerr

Witnessed By Kevin Bailey

Borehole Record

Casing Record

| Run No | Bit | From | To | Size | Wgt. | From | To |
|--------|-----|------|----|------|------|------|----|
|--------|-----|------|----|------|------|------|----|

| | | | | | | | |
|-----|-------|----|-----|-------|-----|----|-----|
| One | 12.25 | 00 | 259 | 8.625 | 23# | 00 | 259 |
|-----|-------|----|-----|-------|-----|----|-----|

| | | | | | | | |
|-----|-------|-----|----|--|--|--|--|
| Two | 7.875 | 259 | TD | | | | |
|-----|-------|-----|----|--|--|--|--|

| | | | | | | | |
|--|--|--|--|--|--|--|--|
| | | | | | | | |
|--|--|--|--|--|--|--|--|

| | | | | | | | |
|--|--|--|--|--|--|--|--|
| | | | | | | | |
|--|--|--|--|--|--|--|--|

| | | | | | | | |
|--|--|--|--|--|--|--|--|
| | | | | | | | |
|--|--|--|--|--|--|--|--|

| | | | | | | | |
|--|--|--|--|--|--|--|--|
| | | | | | | | |
|--|--|--|--|--|--|--|--|

<<< Fold Here >>>

All interpretations are opinions based on inferences from electrical or other measurements and we cannot and do not guarantee the accuracy or correctness of any interpretation, and we shall not, except in the case of gross or willful negligence on our part, be liable or responsible for any loss, costs, damages, or expenses incurred or sustained by anyone resulting from any interpretation made by any of our officers, agents or employees. These interpretations are also subject to our general terms and conditions set out in our current Price Schedule.

Comments

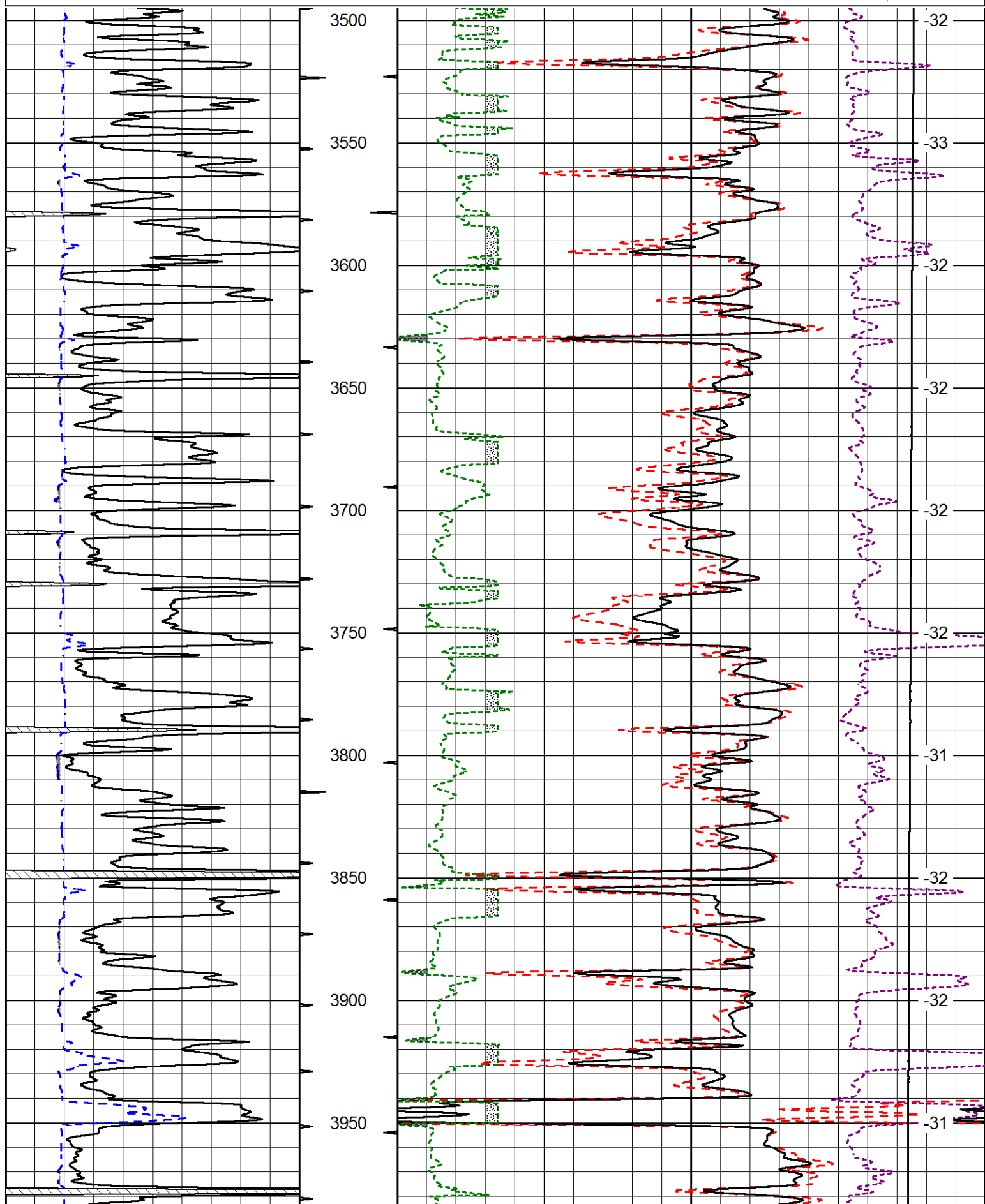
Thank you for using Pioneer Energy Services
785.625.3858

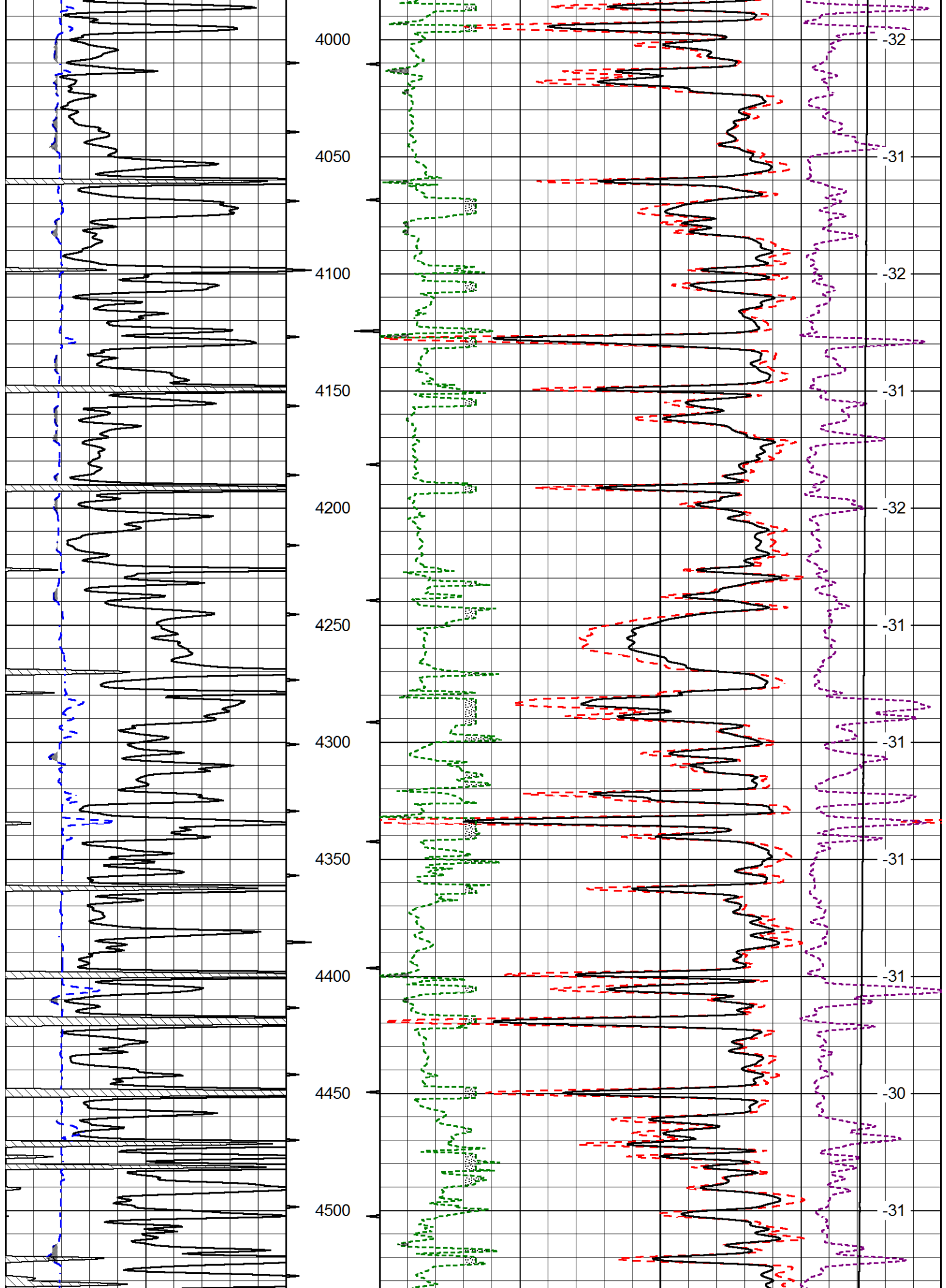
Monument KS, 22 South to Indian RD,
West to 320 RD, 1 1/4 South, East and North Into

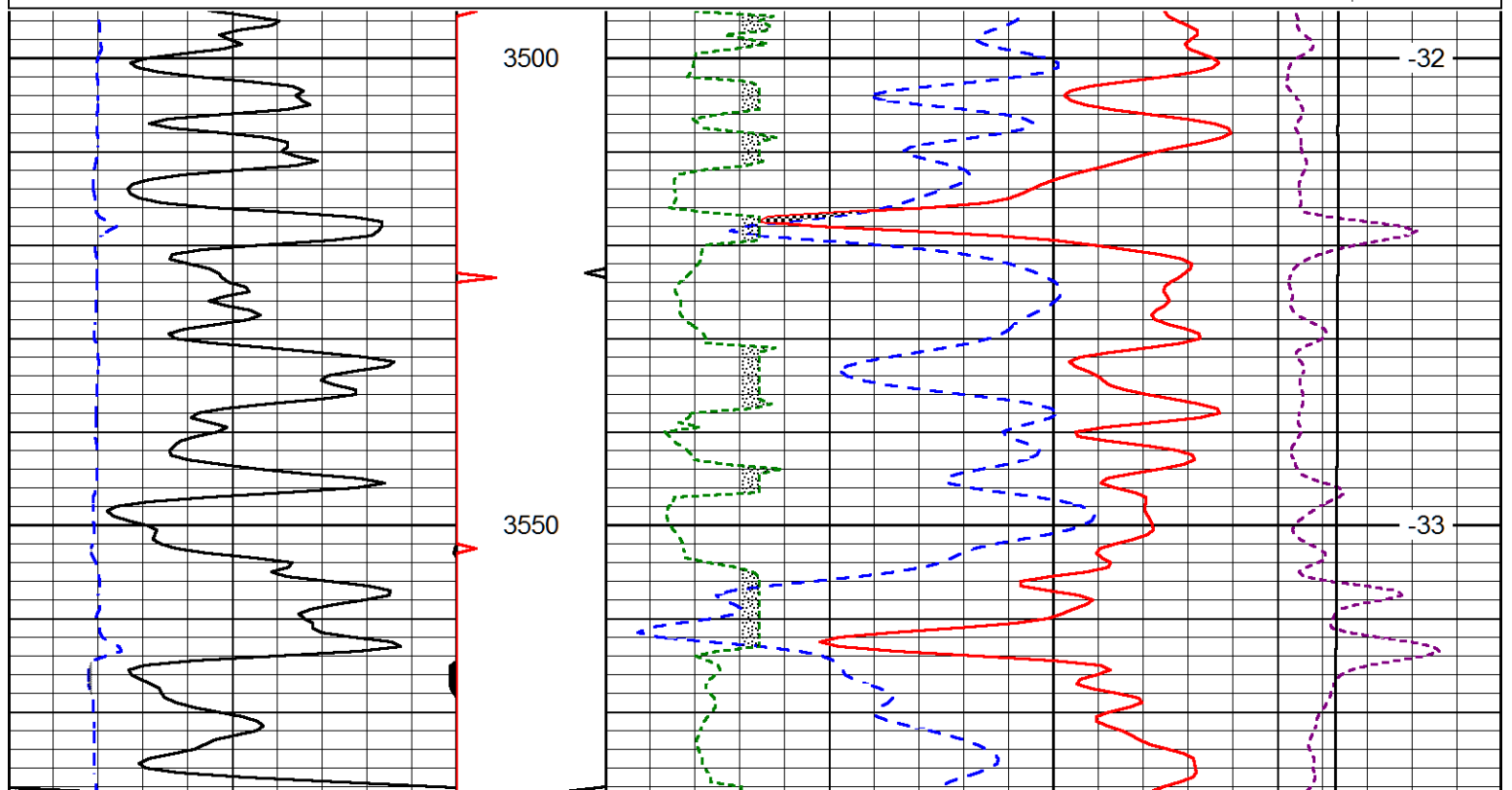
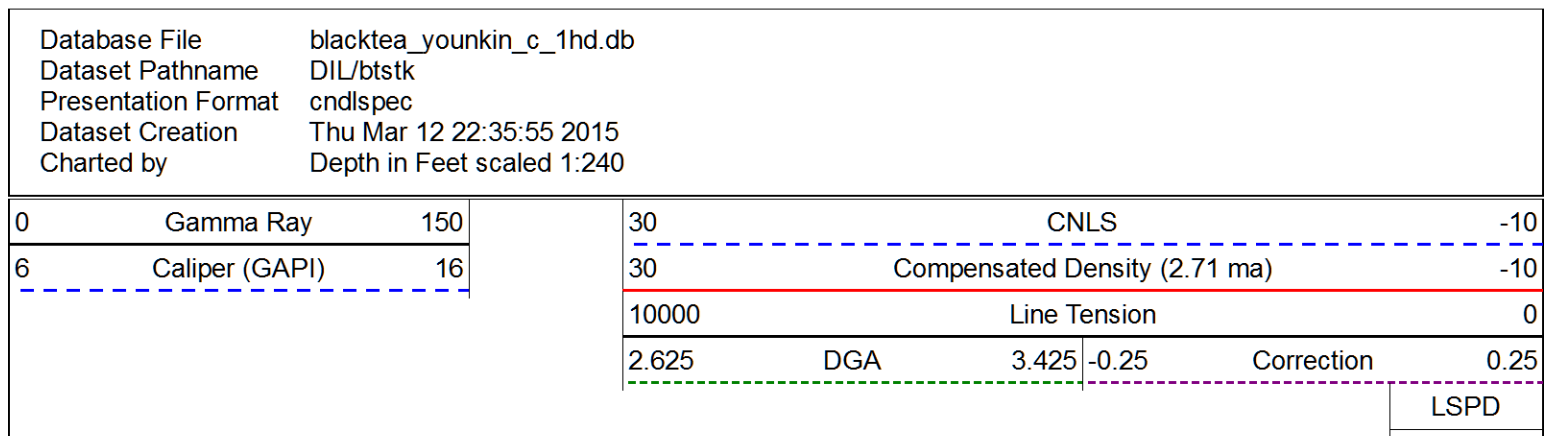
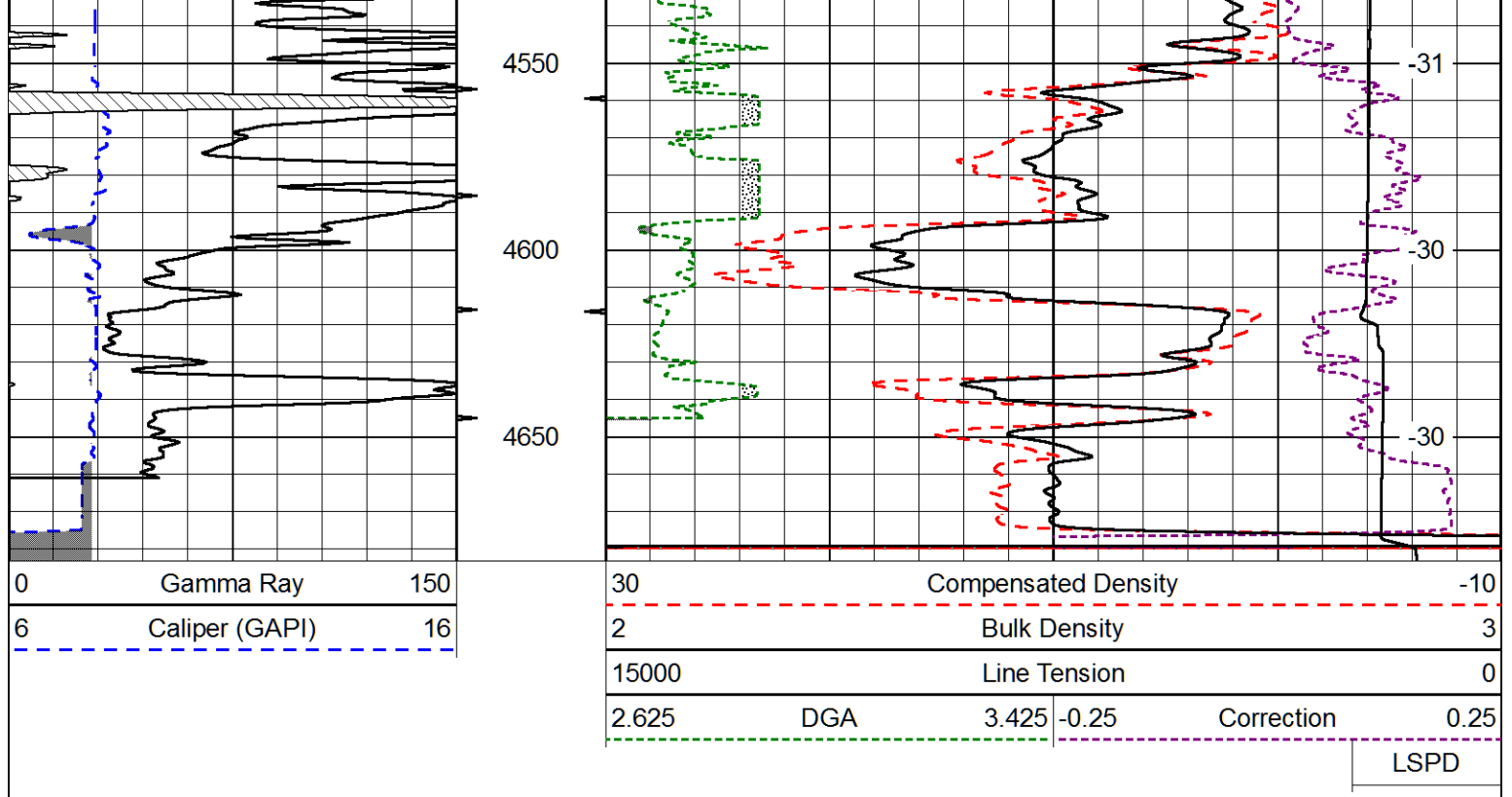
Database File blacktea_younkin_c_1hd.db
Dataset Pathname DIL/btstk
Presentation Format cdl
Dataset Creation Thu Mar 12 22:35:55 2015
Charted by Depth in Feet scaled 1:600

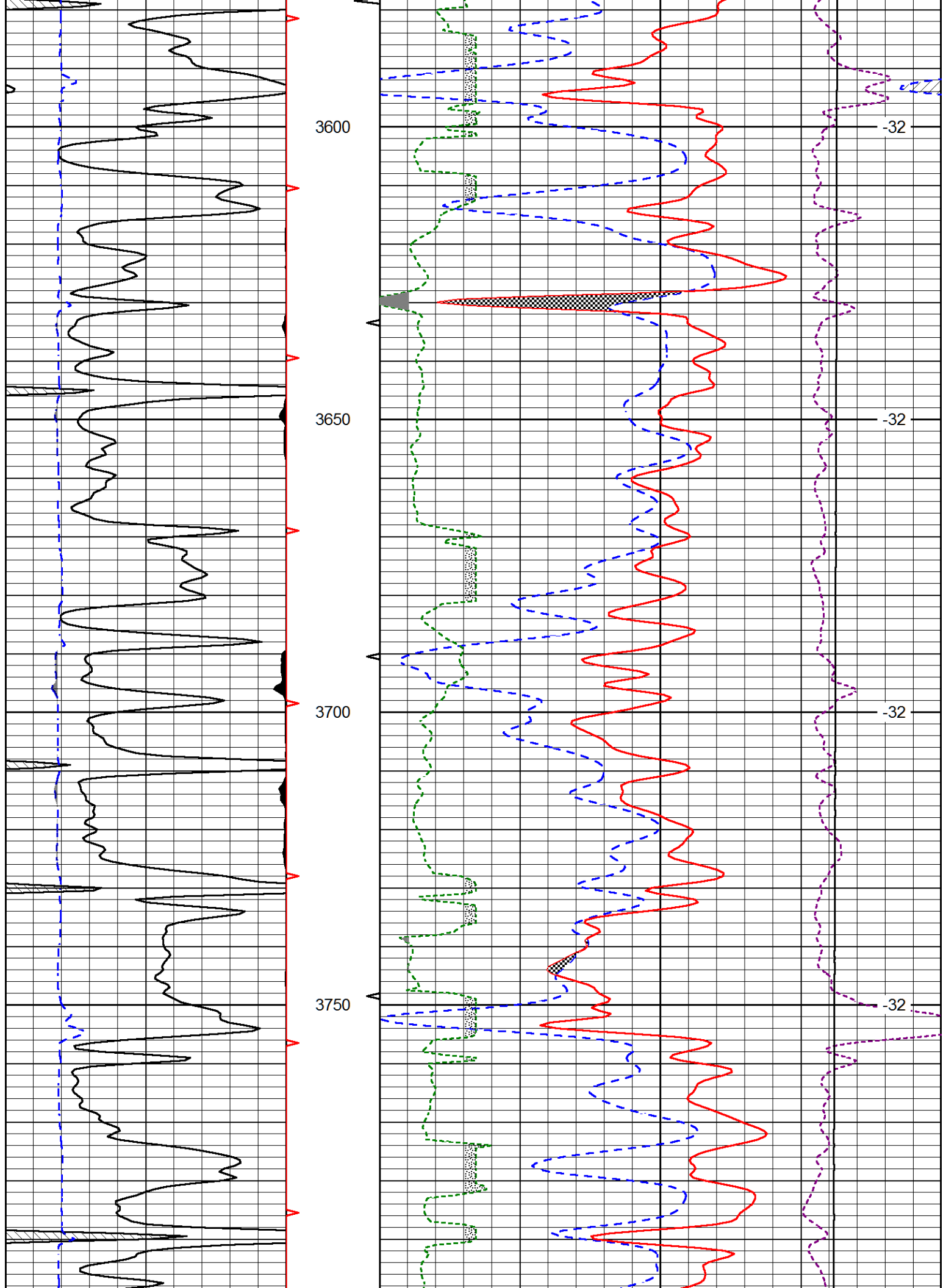
| | | |
|---|----------------|-----|
| 0 | Gamma Ray | 150 |
| 6 | Caliper (GAPI) | 16 |

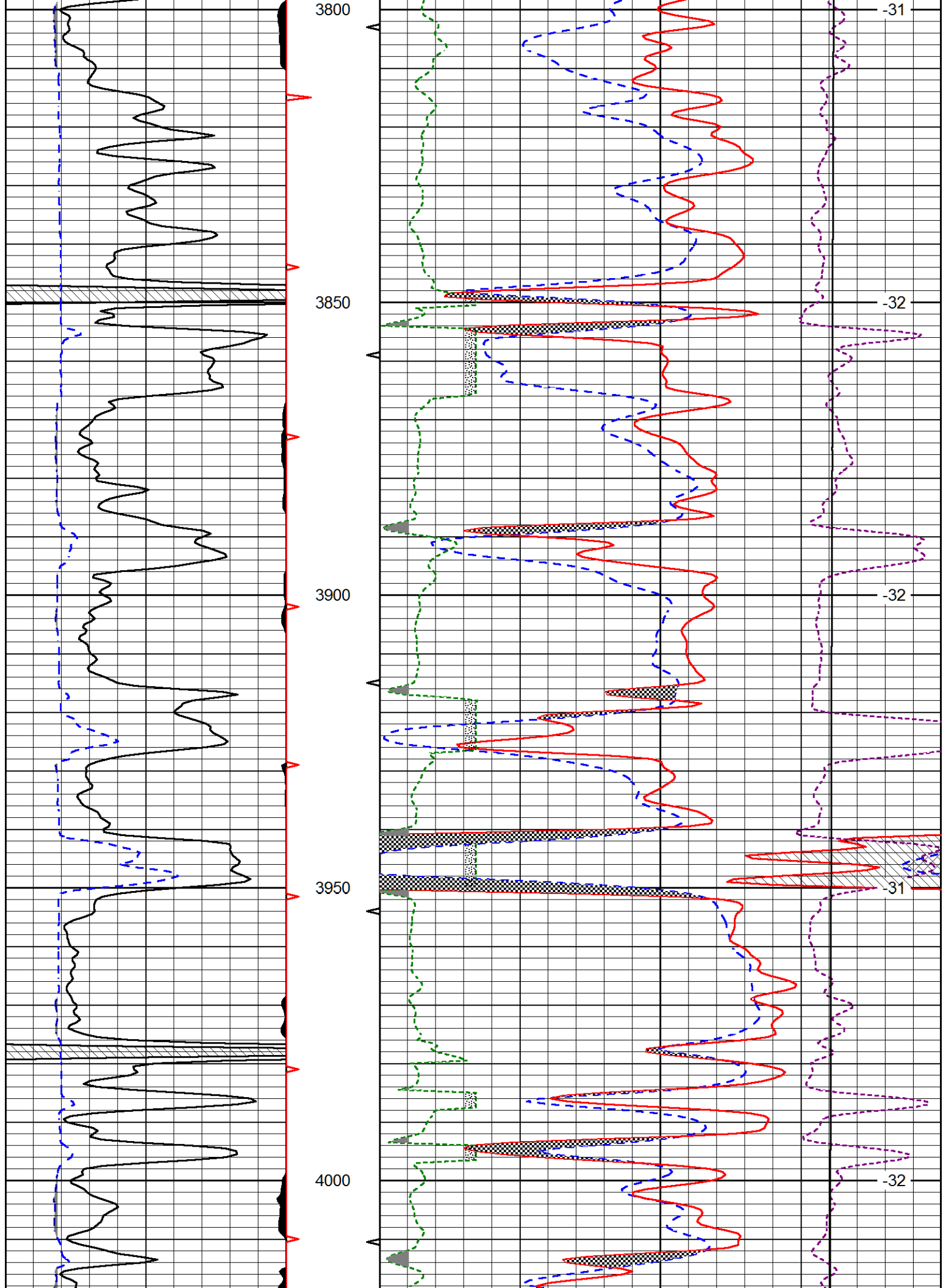
| | | | |
|-------|---------------------|-------|------------|
| 30 | Compensated Density | | -10 |
| 2 | Bulk Density | | 3 |
| 15000 | Line Tension | | 0 |
| 2.625 | DGA | 3.425 | -0.25 |
| | | | Correction |
| | | | 0.25 |
| | | | LSPD |

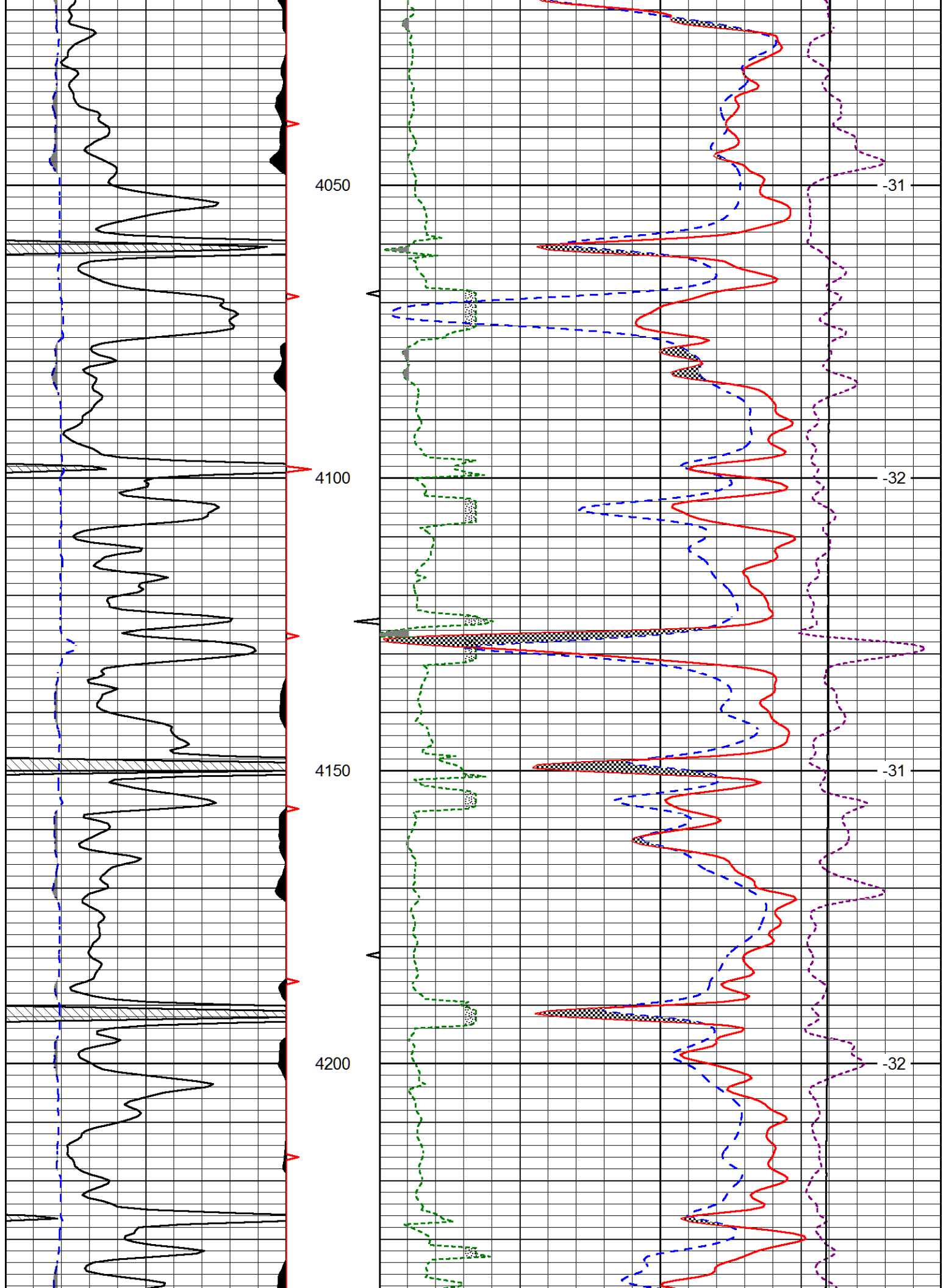


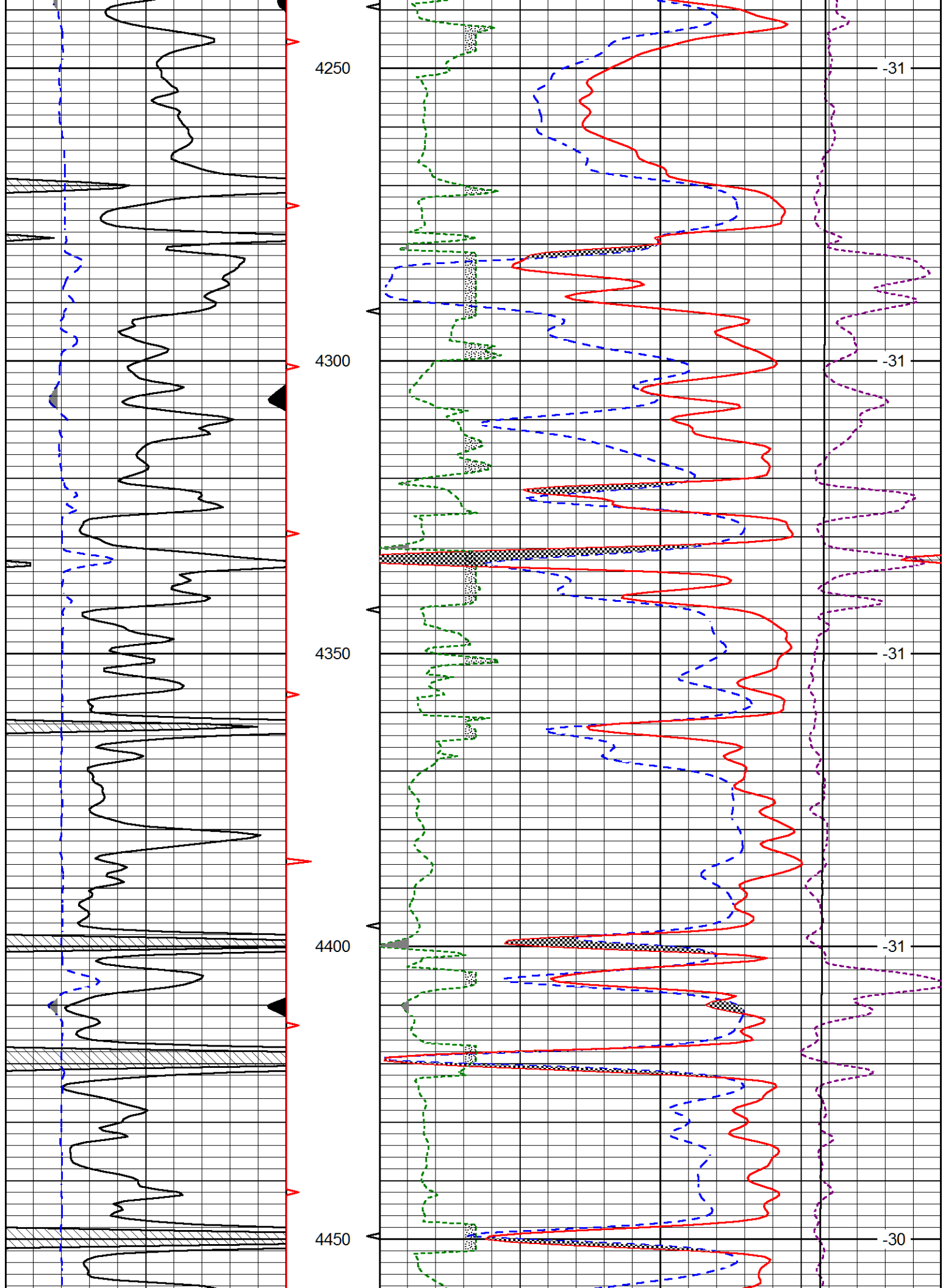


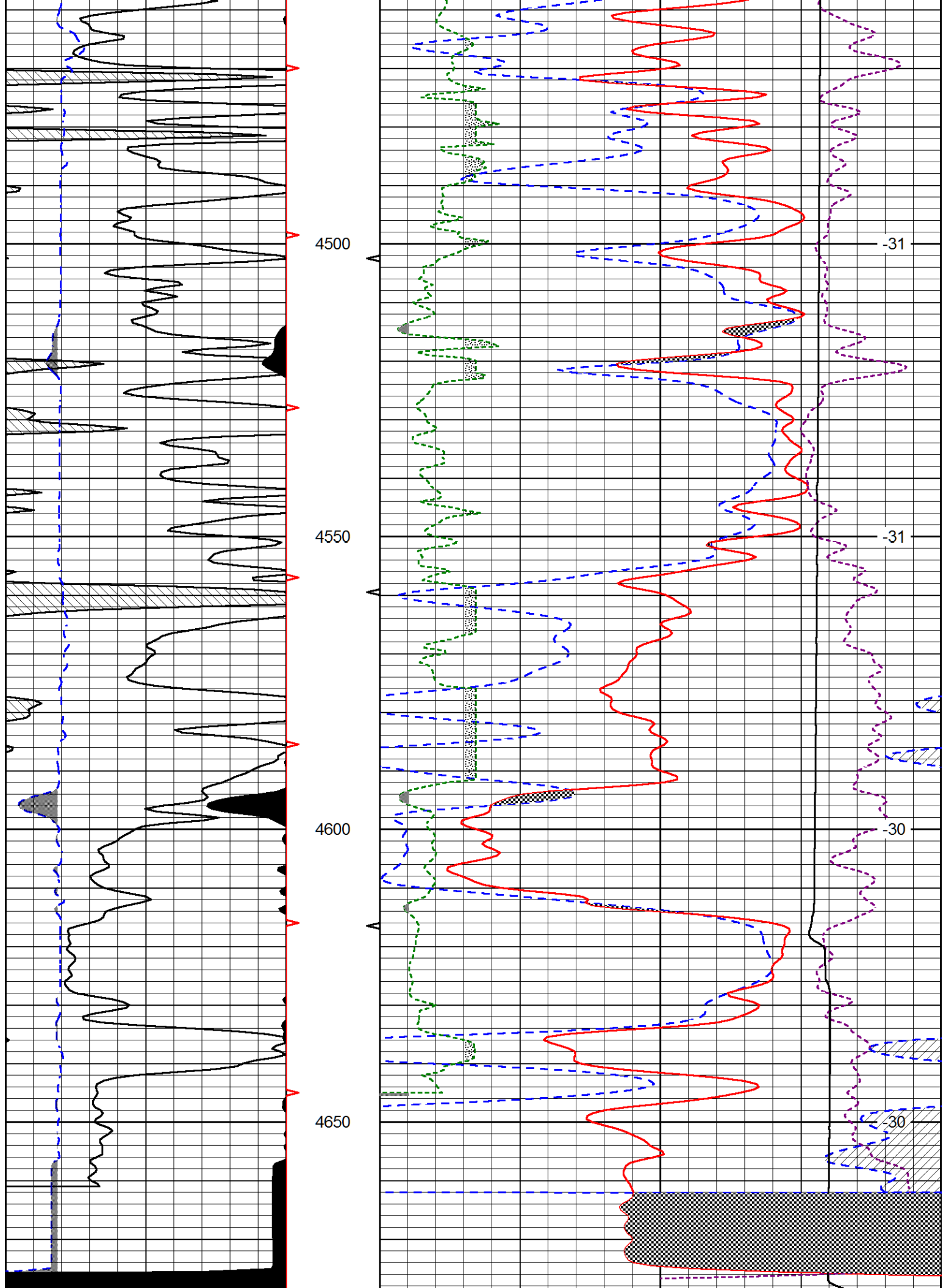












| | | | | | | | | | | | | | | | | | | | |
|---|----------------|-----|-------|-------------------------------|-------|-------|------------|--|--|--|--|--|--|--|--|--|--|------|--|
| | | | | | | | | | | | | | | | | | | | |
| 0 | Gamma Ray | 150 | 30 | CNLS | | | | | | | | | | | | | | -10 | |
| 6 | Caliper (GAPI) | 16 | 30 | Compensated Density (2.71 ma) | | | | | | | | | | | | | | -10 | |
| | | | 10000 | Line Tension | | | | | | | | | | | | | | 0 | |
| | | | 2.625 | DGA | 3.425 | -0.25 | Correction | | | | | | | | | | | 0.25 | |
| | | | | | | | | | | | | | | | | | | LSPD | |