



MIDWEST SURVEYS

LOGGING - PERFORATING - CONSULTING SERVICES
P.O. Box 68, Osawatomie, KS 66064
913 / 756 - 2128

GAMMA RAY / NEUTRON / CCL

API# 15-059-26,980

File No.

Company Haas Petroleum, LLC.

Well Detar No. 12-HP

Field Paola / Rantoul

County Franklin State Kansas

Location

2300' FNL & 3135' FEL
NW-SE-SE-NW

Other Services
Perforate

Sec. 3 Twp. 16S Rge. 21E

Permanent Datum GL Elevation 1010'

Log Measured From GL

Drilling Measured From GL

Elevation
K.B. NA
D.F. NA
G.L. 1010'

Date 04-22-2015

Run Number One

Depth Driller 720.0

Depth Logger 715.0

Bottom Logged Interval 714.0

Top Log Interval 20.0

Fluid Level Full

Type Fluid Water

Density / Viscosity NA

Salinity - PPM Cl NA

Max Recorded Temp NA

Estimated Cement Top 0.0

Equipment No. 102 Location Osawatomie

Recorded By Gary Windisch

Witnessed By John Haas

Recorded By

Witnessed By

Recorded By

Witnessed By

BORE-HOLE RECORD

BIT FROM TO SIZE WGT. FROM TO

One 9.875" 0.0 20.0 7.00" 17.0 # 0.0 20.0

Two 5.625" 20.0 720.0 2.875" 6.5 # 0.0 716.0

CASING RECORD

FROM TO

0.0 20.0

20.0 720.0

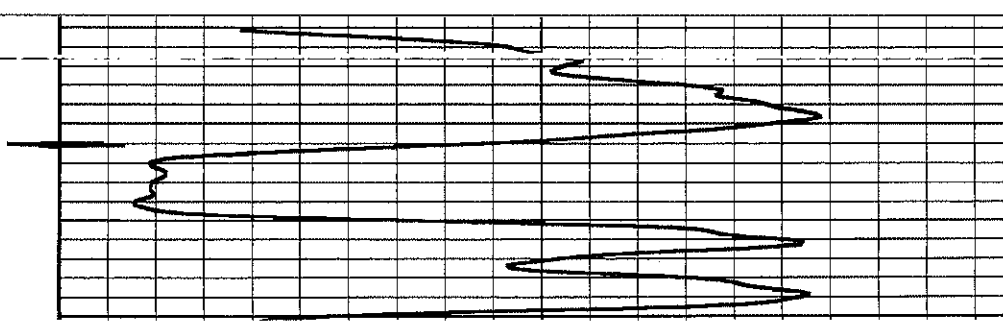
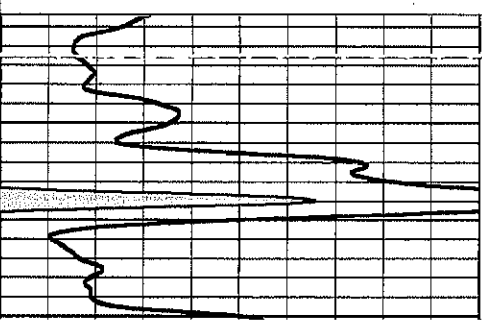
<<< Fold Here >>>

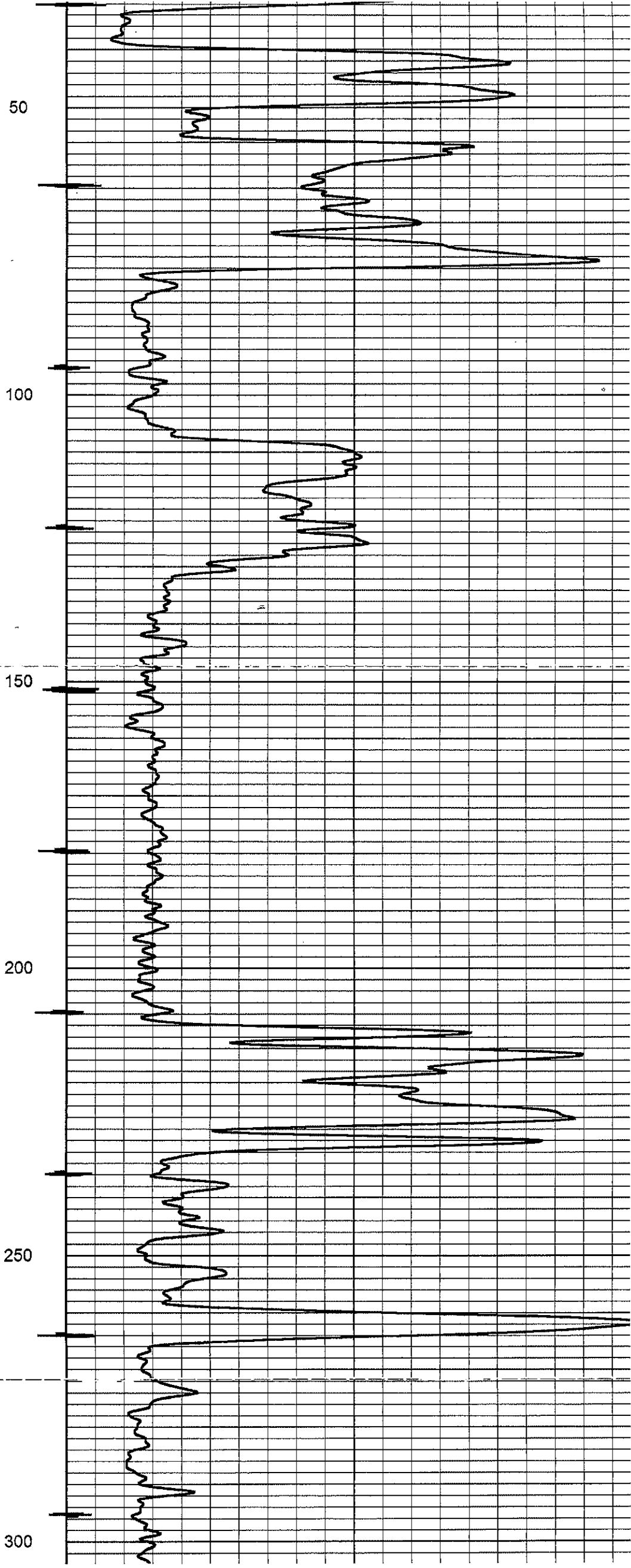
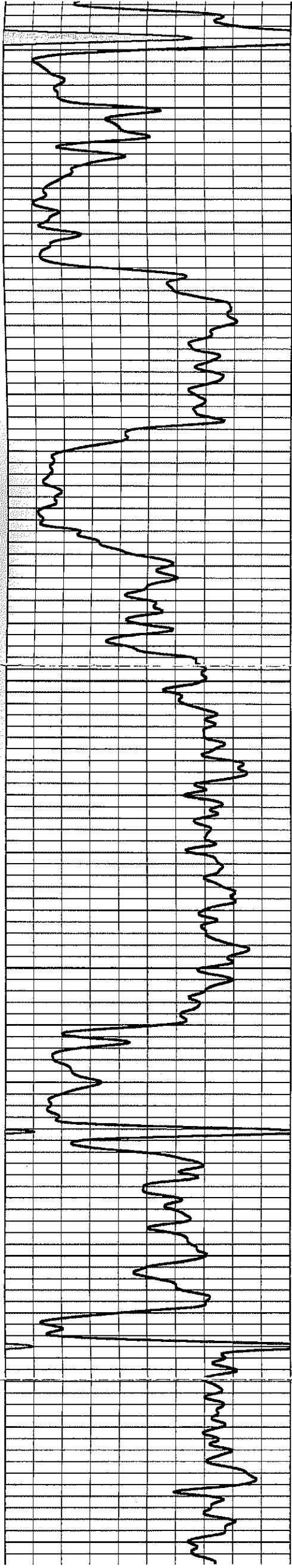
All interpretations are opinions based on inferences from electrical or other measurements and we cannot and do not guarantee the accuracy or correctness of any interpretation, and we shall not, except in the case of gross or willful negligence on our part, be liable or responsible for any loss, costs, damages, or expenses incurred or sustained by anyone resulting from any interpretation made by any of our officers, agents or employees. These interpretations are also subject to our general terms and conditions set out in our current Price Schedule.

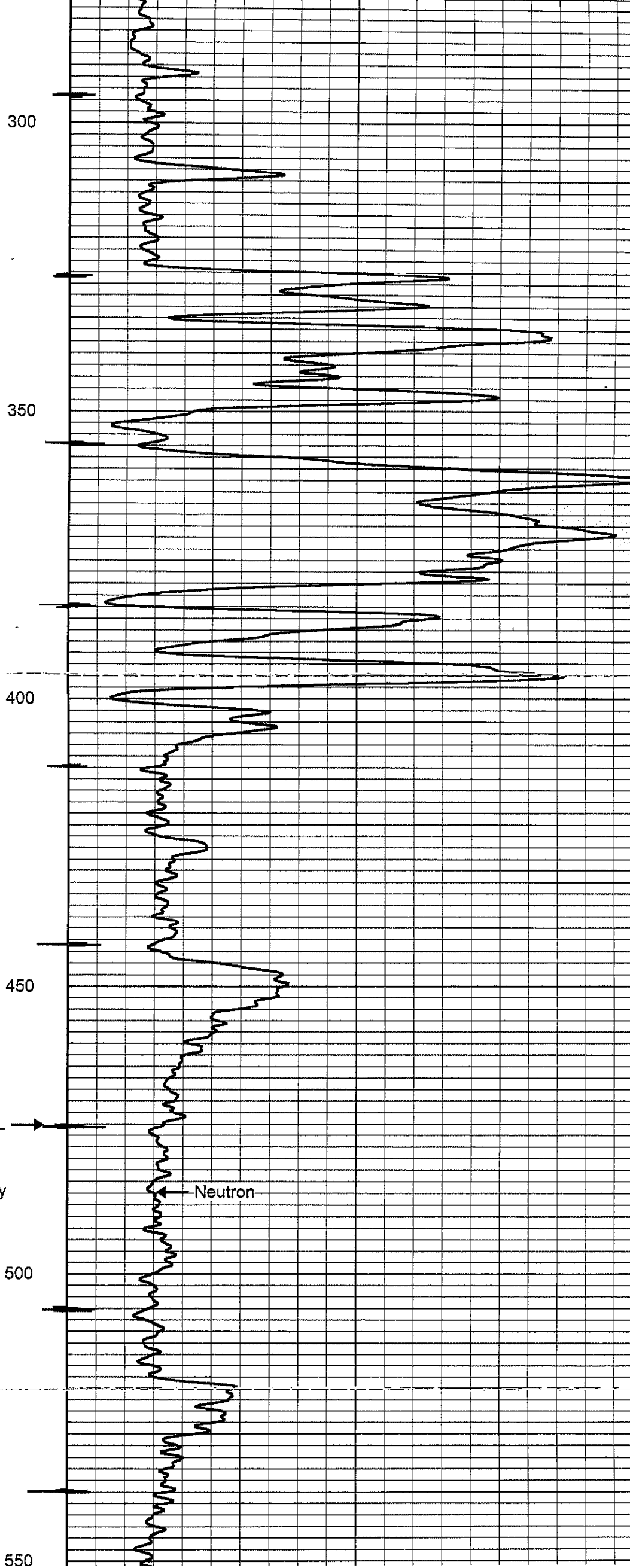
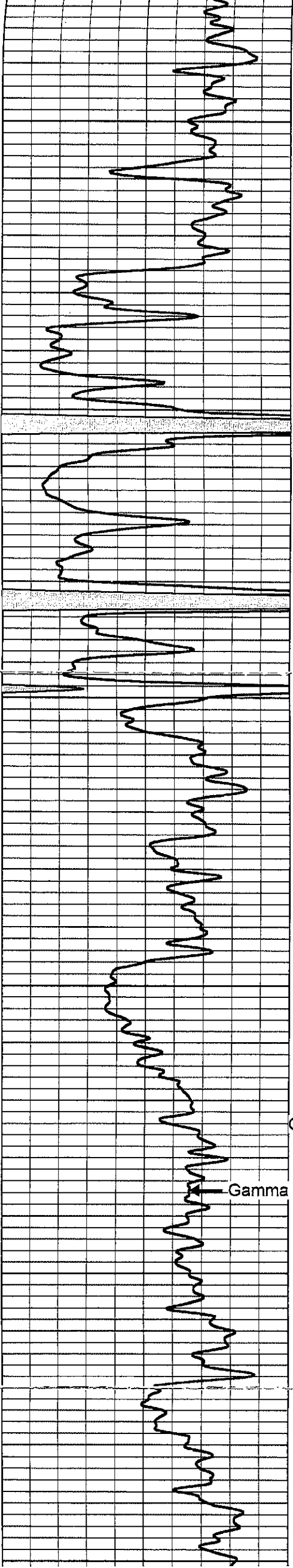
Comments

Drilling Contractor :
Skyy Drilling, LLC.
Rig #5

Database File: detar 12hp.db
Dataset Pathname: pass1
Presentation Format: gr-n-ccl
Dataset Creation: Wed Apr 22 09:19:25 2015 by Log SCH 111116
Charted by: Depth in Feet scaled 1:240



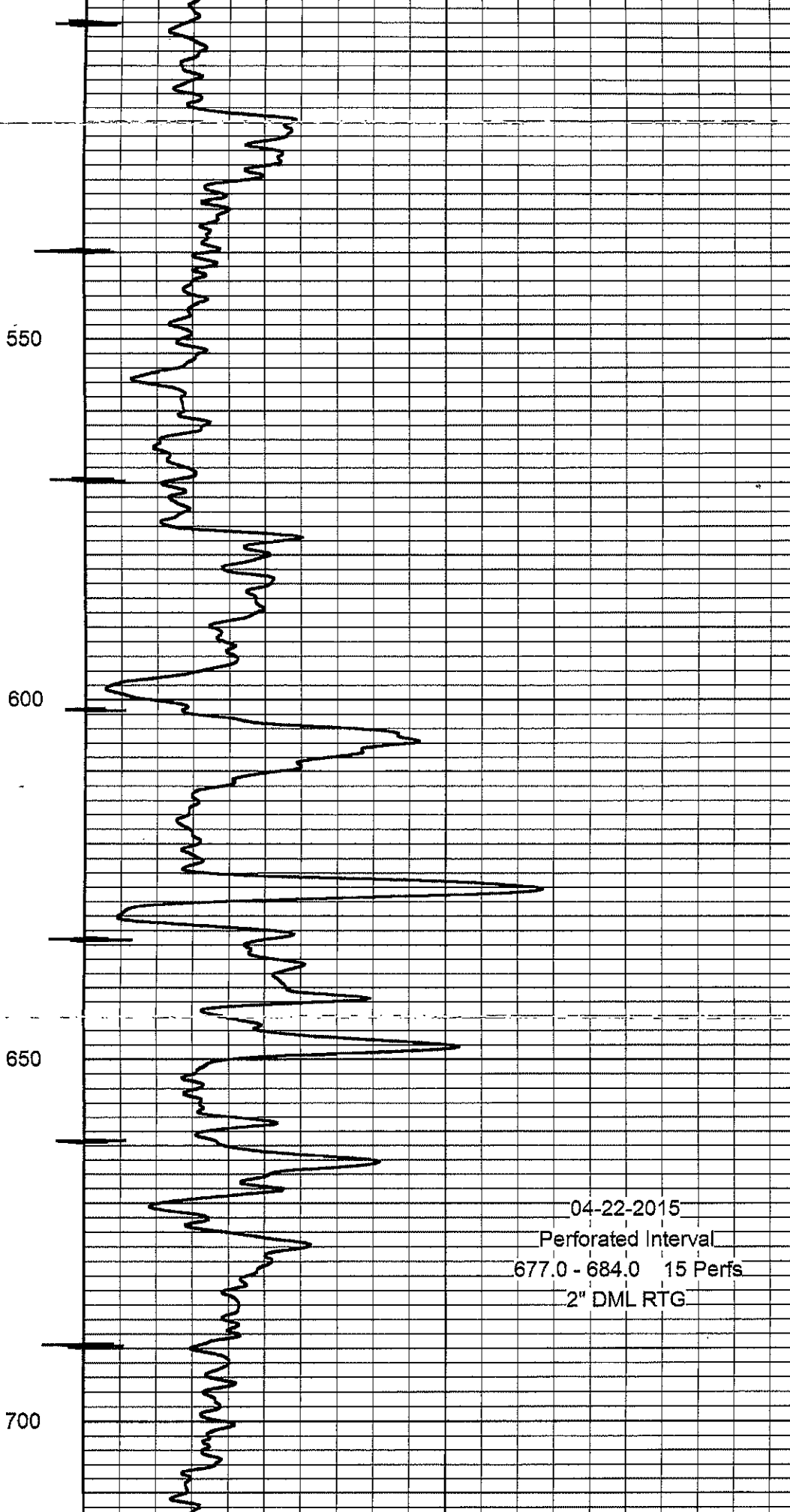
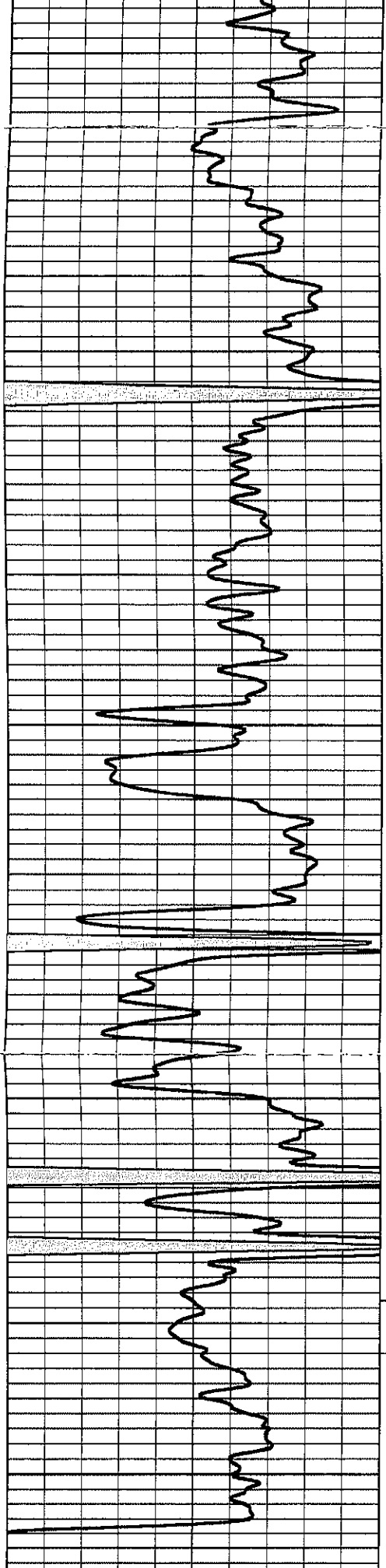




CCL →

Gamma Ray

Neutron



04-22-2015
 Perforated Interval
 677.0 - 684.0 15 Perfs
 2" DML RTG

0	Gamma Ray (cps)	150
150	Gamma Ray (cps)	300

-1 CCL 1
100

Neutron (cps) 1900