

MIDWEST SURVEYS
 LOGGING - PERFORATING - CONSULTING SERVICES
 P.O. Box 68, Osawatomie, KS 66064
 913 / 765 - 2128

GAMMA RAY / NEUTRON / CCL

API# 15-059-26,976

File No.

Company **Haas Petroleum, LLC.**

Well **Detar No. 8-HP**

Field **Paola / Rantoul**

County **Franklin** State **Kansas**

Location

**1980' FNL & 3135' FEL
 W/2-E/2-SE-NW**

Other Services
Perforate

Sec. 3 Twp. 16s Rge. 21e

Permanent Datum **GL** Elevation **1012'**

Log Measured From **GL**

Drilling Measured From **GL**

Elevation
 K.B. NA
 D.F. NA
 G.L. 1012'

Date **04-22-2015**

Run Number

Depth Driller

Depth Logger

Bottom Logged Interval

Top Log Interval

Fluid Level

Type Fluid

Density / Viscosity

Salinity - PPM Cl

Max Recorded Temp

Estimated Cement Top

Equipment No.

Recorded By

Witnessed By

John Haas

Location **102 Osawatomie**

Recorded By **Gary Windisch**

CASING RECORD

BORE-HOLE RECORD

RUN No.	BIT	BORE-HOLE RECORD		CASING RECORD		
		FROM	TO	SIZE	WGT.	FROM TO
One	9.875"	0.0	20.0	7.00"	17.0#	0.0 20.0
Two	5.625"	20.0	720.0	2.875"	6.5#	0.0 717.0

<<< Fold Here >>>

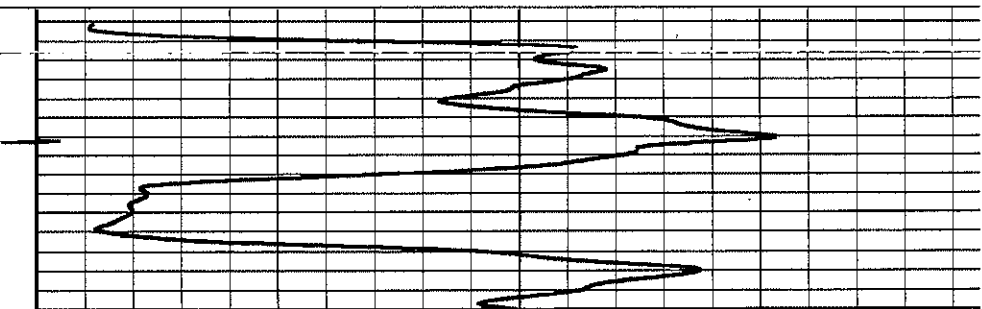
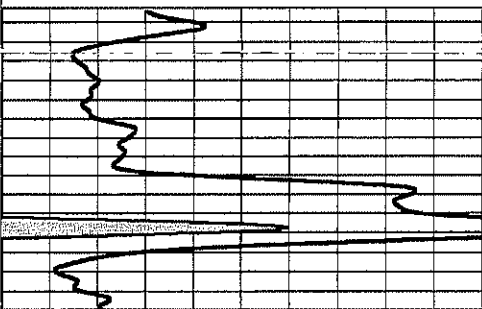
All interpretations are opinions based on inferences from electrical or other measurements and we cannot and do not guarantee the accuracy or correctness of any interpretation, and we shall not, except in the case of gross or willful negligence on our part, be liable or responsible for any loss, costs, damages, or expenses incurred or sustained by anyone resulting from any interpretation made by any of our officers, agents or employees. These interpretations are also subject to our general terms and conditions set out in our current Price Schedule.

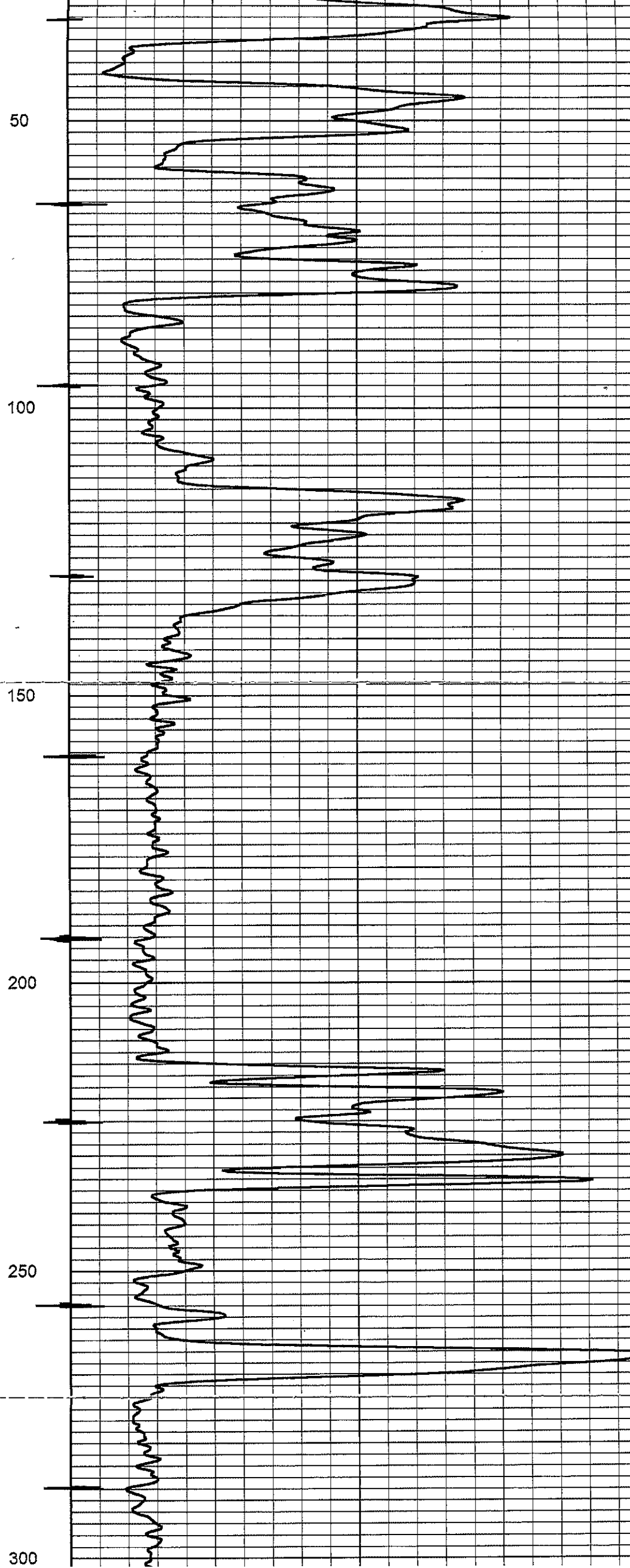
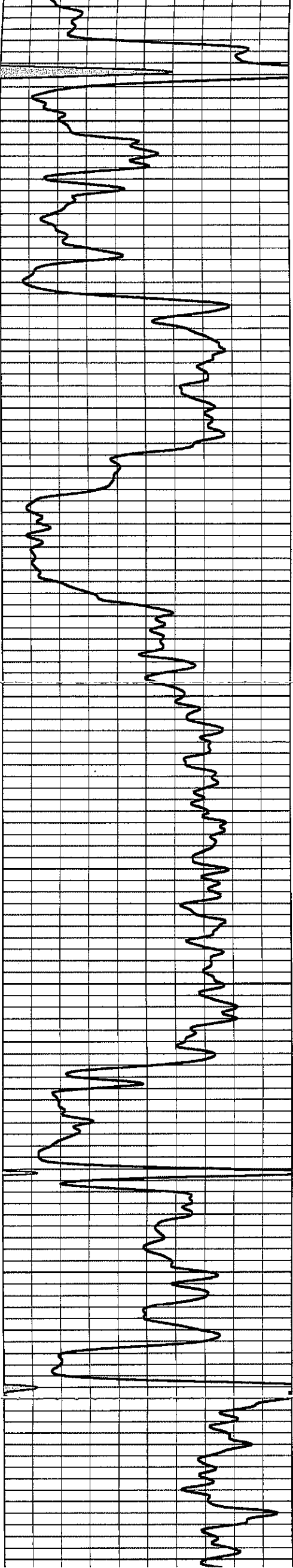
Comments

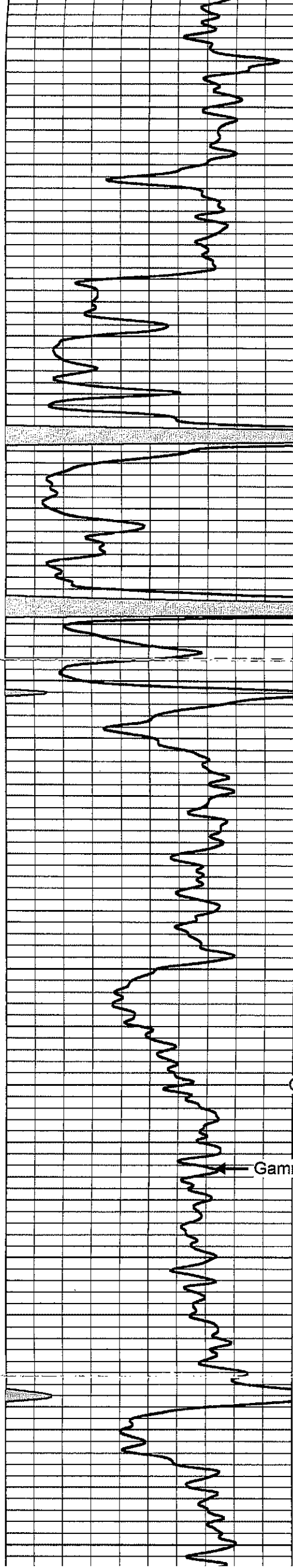
Drilling Contractor :
 Skyy Drilling, LLC.
 Rig #5

Database File: **detar 8hp.db**
 Dataset Pathname: **pass1**
 Presentation Format: **gr-n-ccl**
 Dataset Creation: **Wed Apr 22 08:45:40 2015 by Log SCH 111116**
 Charted by: **Depth in Feet scaled 1:240**

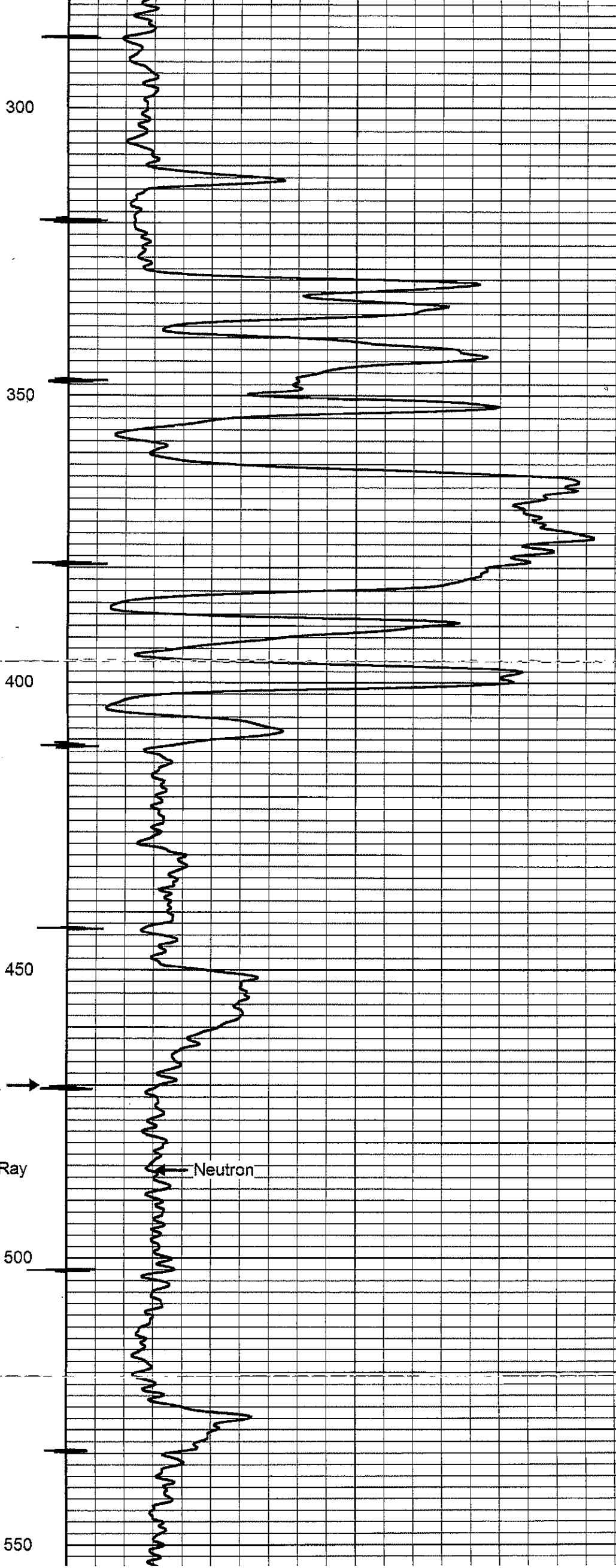
0	Gamma Ray (cps)	150	-1 CCL 1	100	Neutron (cps)	190
150	Gamma Ray (cps)	300				



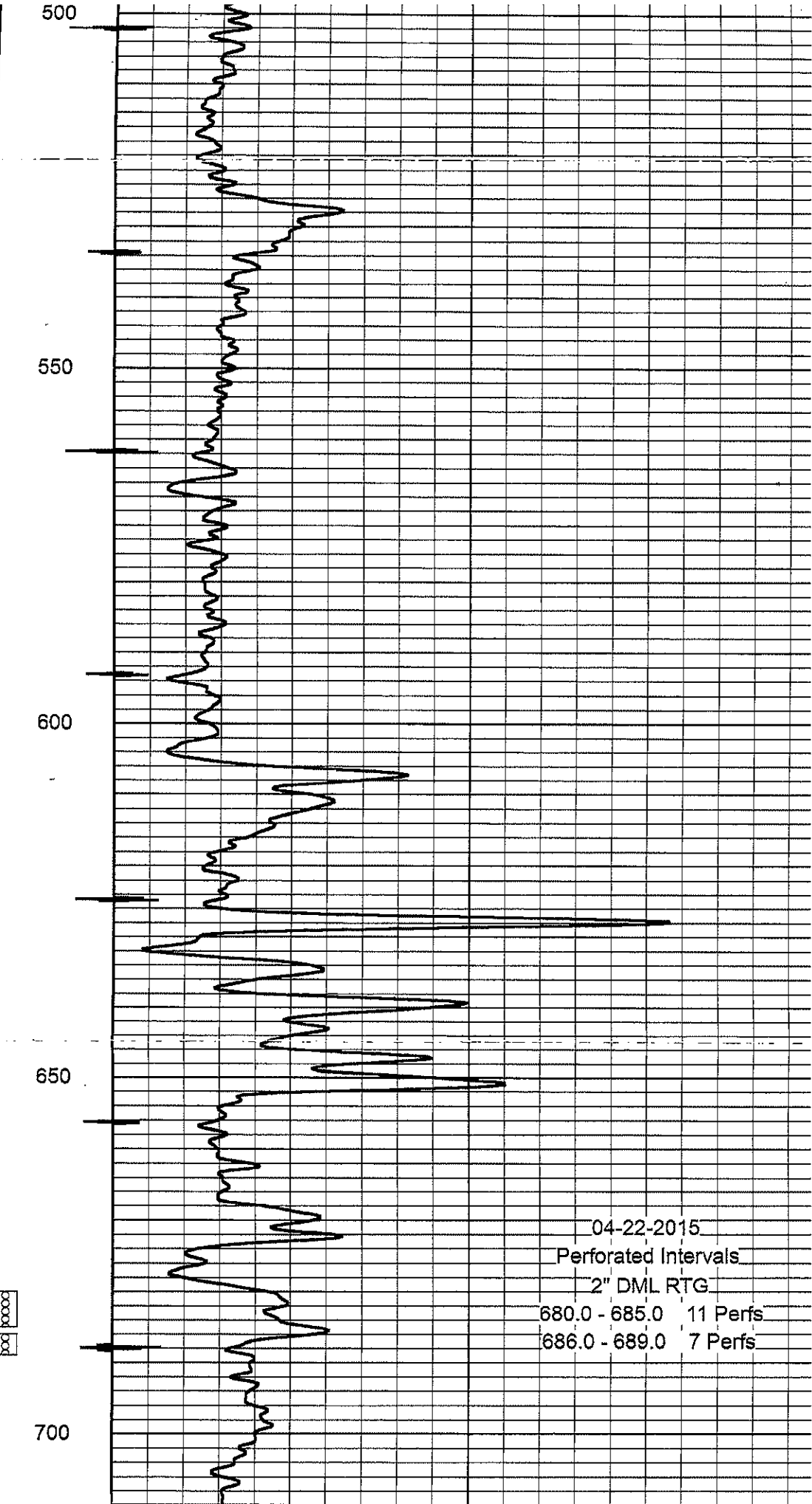
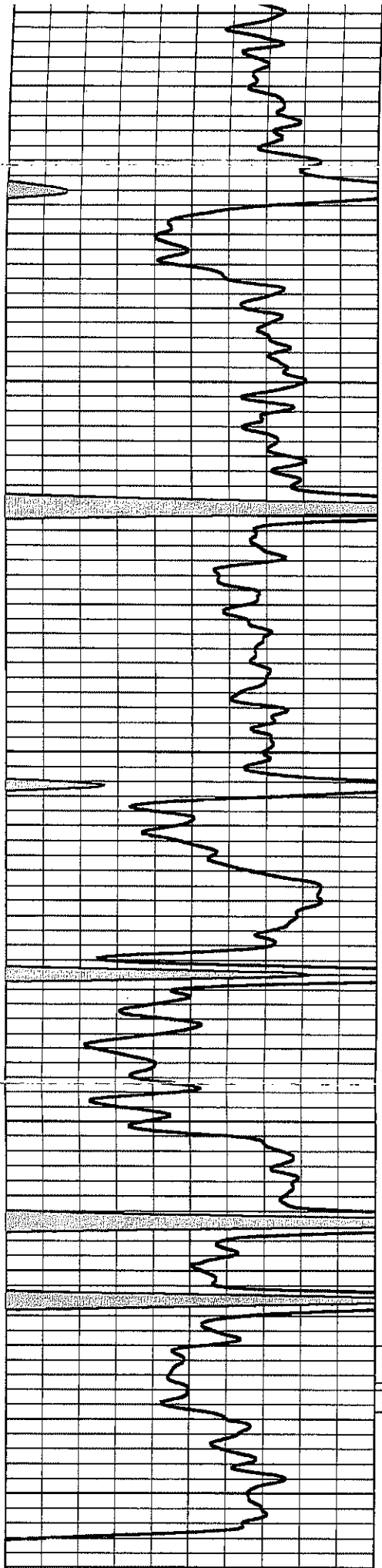




CCL →
Gamma Ray



Neutron



04-22-2015
 Perforated Intervals
 2" DML RTG
 680.0 - 685.0 11 Perfs
 686.0 - 689.0 7 Perfs

0	Gamma Ray (cps)	150
150	Gamma Ray (cps)	300

-1 CCL 1
 100

Neutron (cps) 1900