



MIDWEST SURVEYS

LOGGING - PERFORATING - CONSULTING SERVICES
 P.O. Box 68, Osawatomie, KS 66064
 913 / 755 - 2128

GAMMA RAY / NEUTRON / CCL

API# 15-059-26,948

File No.

Company Haas Petroleum, LLC.

Well Detar No. 11-HP

Field Paola / Rantoul

County Franklin State Kansas

Location

2295' FNL & 3485' FEL
 NE-SW-SE-NW

Other Services
 Perforate

Sec. 3 Twp. 16S Rge. 21E

Elevation 1008'

Elevation

Permanent Datum GL
 Log Measured From GL
 Drilling Measured From GL

K.B. NA
 D.F. NA
 G.L. 1008'

Date 04-29-2015

Run Number One

Depth Driller 750.0

Depth Logger 728.8

Bottom Logged Interval 727.8

Top Log Interval 20.0

Fluid Level Full

Type Fluid Water

Density / Viscosity NA

Salinity - PPM Cl NA

Max Recorded Temp NA

Estimated Cement Top 0.0

Equipment No. 102 Location Osawatimie

Recorded By Gary Windisch

Witnessed By John Haas

BORE-HOLE RECORD

CASING RECORD

RUIN No.	BIT	FROM	TO	SIZE	WGT.	FROM	TO
One	9.875"	0.0	20.0	7.00"	17.0 #	0.0	20.0
Two	5.625"	20.0	750.0	2.875"	6.5 #	0.0	735.0

<<< Fold Here >>>

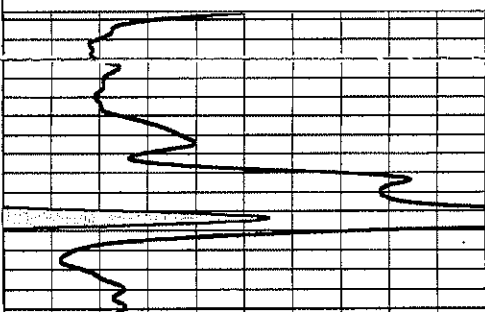
All interpretations are opinions based on inferences from electrical or other measurements and we cannot and do not guarantee the accuracy or correctness of any interpretation, and we shall not, except in the case of gross or willful negligence on our part, be liable or responsible for any loss, costs, damages, or expenses incurred or sustained by anyone resulting from any interpretation made by any of our officers, agents or employees. These interpretations are also subject to our general terms and conditions set out in our current Price Schedule.

Comments

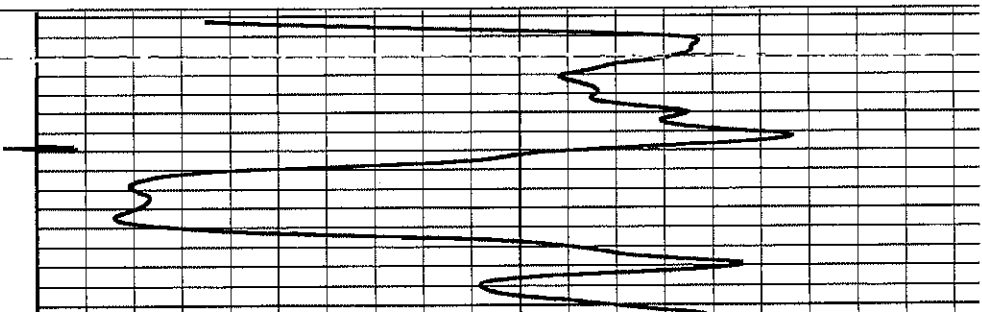
Drilling Contractor :
 Skyy Drilling, LLC.
 Rig #5

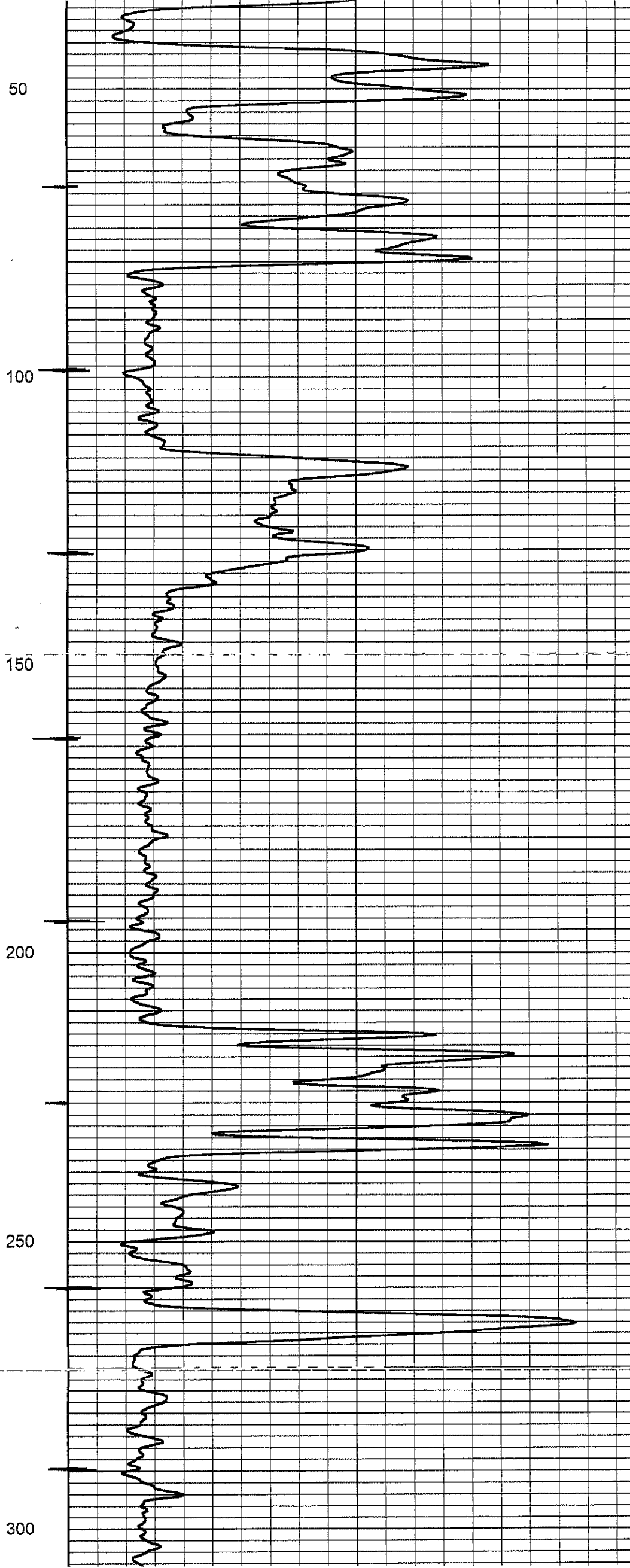
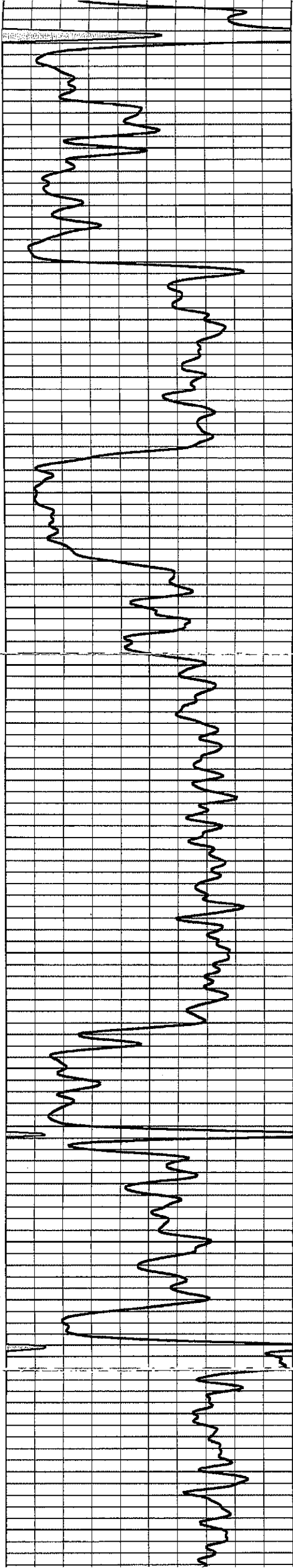
Database File: detar 11hp.db
 Dataset Pathname: pass1
 Presentation Format: gr-n-ccl
 Dataset Creation: Wed Apr 29 08:40:04 2015 by Log SCH 111116
 Charted by: Depth in Feet scaled 1:240

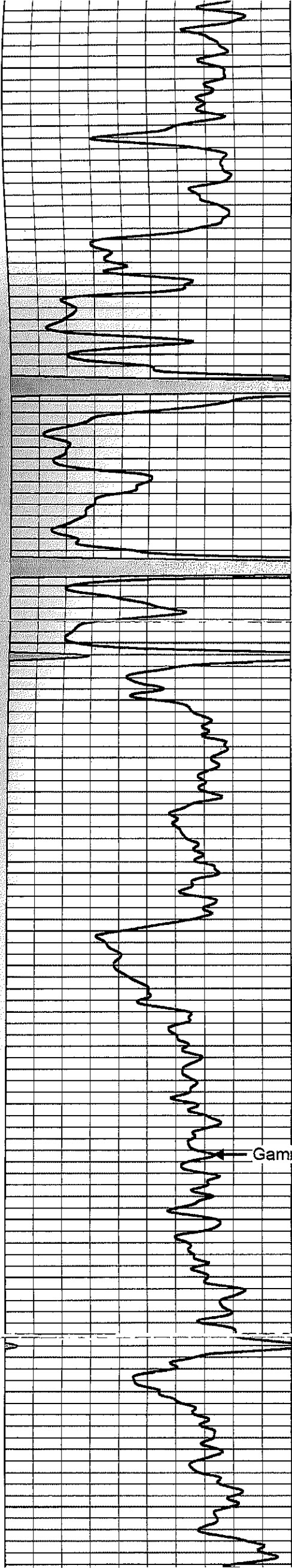
0	Gamma Ray (cps)	150	-1 CCL 1	100	Neutron (cps)	190
150	Gamma Ray (cps)	300				



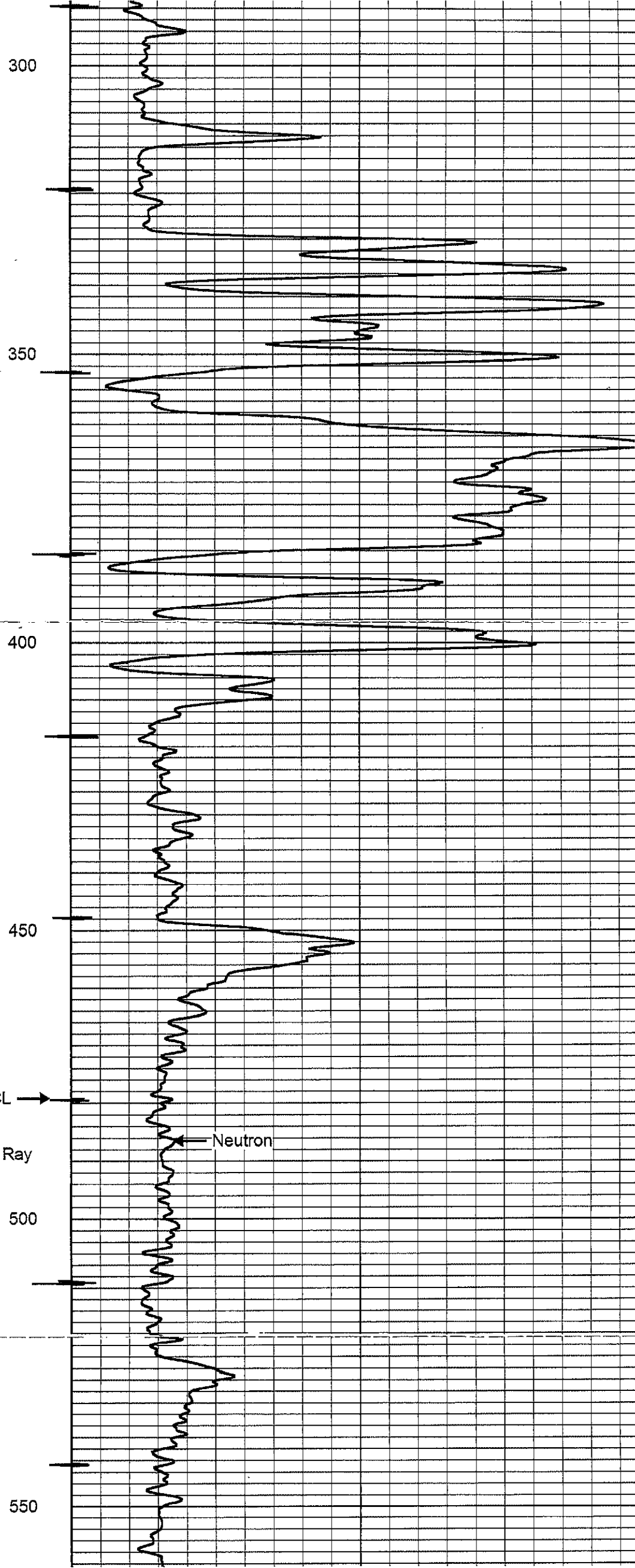
50





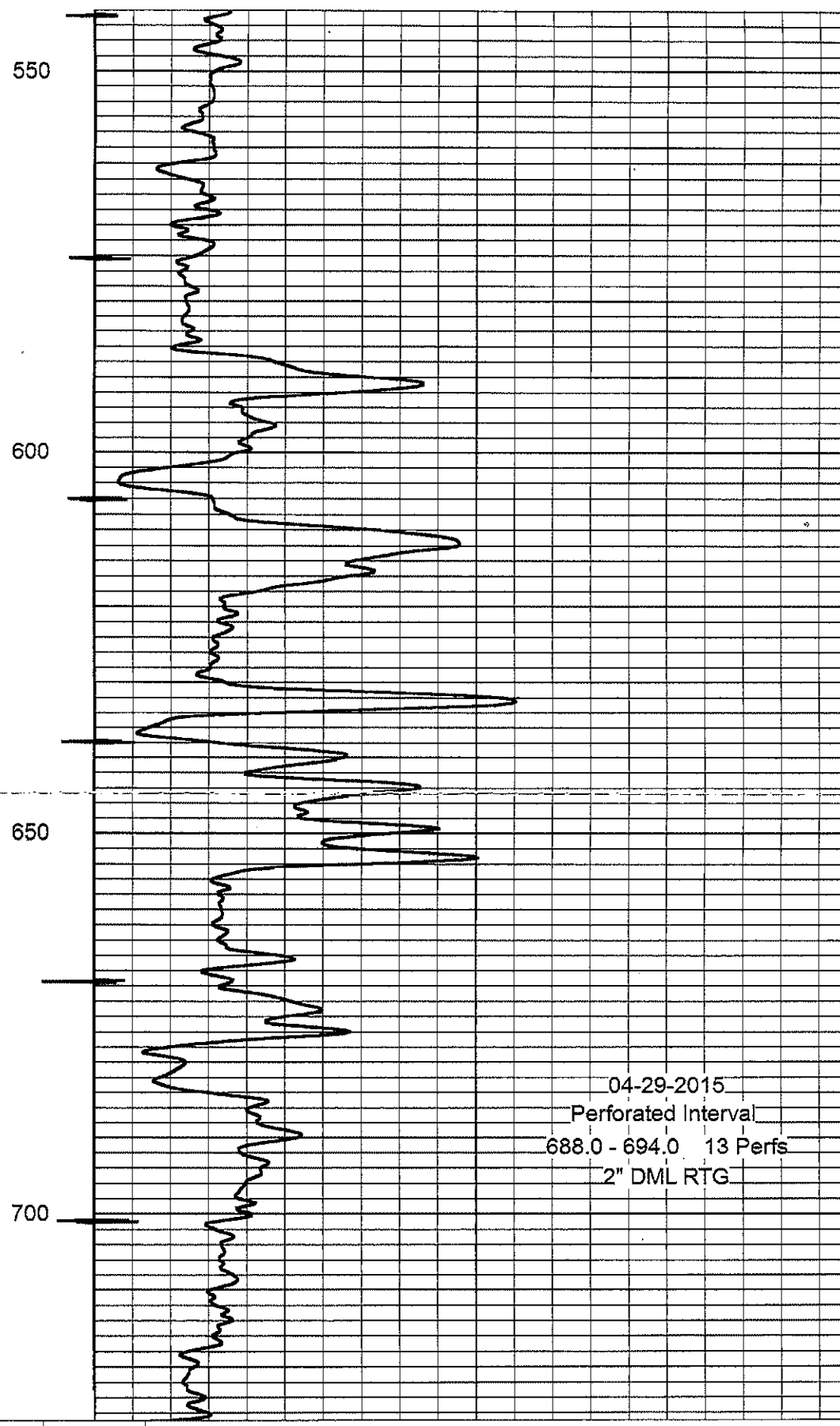
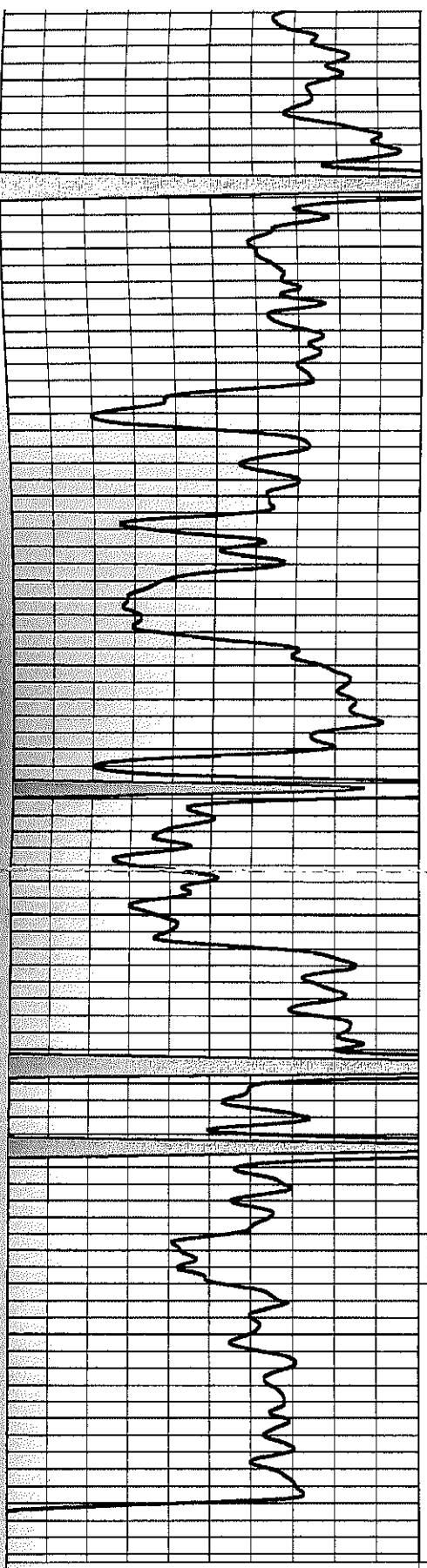


Gamma Ray



Neutron

CCL →



04-29-2015
 Perforated Interval
 688.0 - 694.0 13 Perfs
 2" DML RTG

0	Gamma Ray (cps)	150
150	Gamma Ray (cps)	300

-1 CCL 1
100

Neutron (cps) 190