



MIDWEST SURVEYS
 LOGGING - PERFORATING - CONSULTING SERVICES
 P.O. Box 68, Osawatomie, KS 66064
 913 / 755 - 2128

GAMMA RAY / NEUTRON / CCL

File No. _____

Company: **Running Foxes Petroleum, Inc.**
 Well: **Grovers No. 8-32C-1**

Field: **Hepler**
 County: **Crawford** State: **Kansas**

Location: **2217' FNL & 768' FEL**
NE-SW-SE-NE

API # 15-037-22,300

Sec. 32 Twp. 27S Rge. 22E
 Permanent Datum: **GL** Elevation: **988'**
 Log Measured From: **GL**
 Drilling Measured From: **GL**
 Elevation: **K.B. NA**
D.F. NA
GL. 988'

Date	04-06-2015	
Run Number	One	
Depth Driller	666.0	
Depth Logger	669.0	
Bottom Logged Interval	659.0	
Top Log Interval	20.0	
Fluid Level	Full	
Type Fluid	Water	
Density / Viscosity	NA	
Salinity - PPM Cl	NA	
Max. Recorded Temp	NA	
Estimated Cement Top	0.0	
Equipment No.	107	
Location	Osawatomie	
Recorded By	Steve Windisch	
Witnessed By	Jesse Smith	

BORE-HOLE RECORD			
RUN	BIT	FROM	TO
One	12.25"	0.0	20.0
Two	6.75"	20.0	740.0

CASINGS RECORD			
	SIZE	WGT.	FROM
	8.625"	24.0 #	0.0
	2.875"	6.5 #	0.0
			672.65

<<< Fold Here >>>

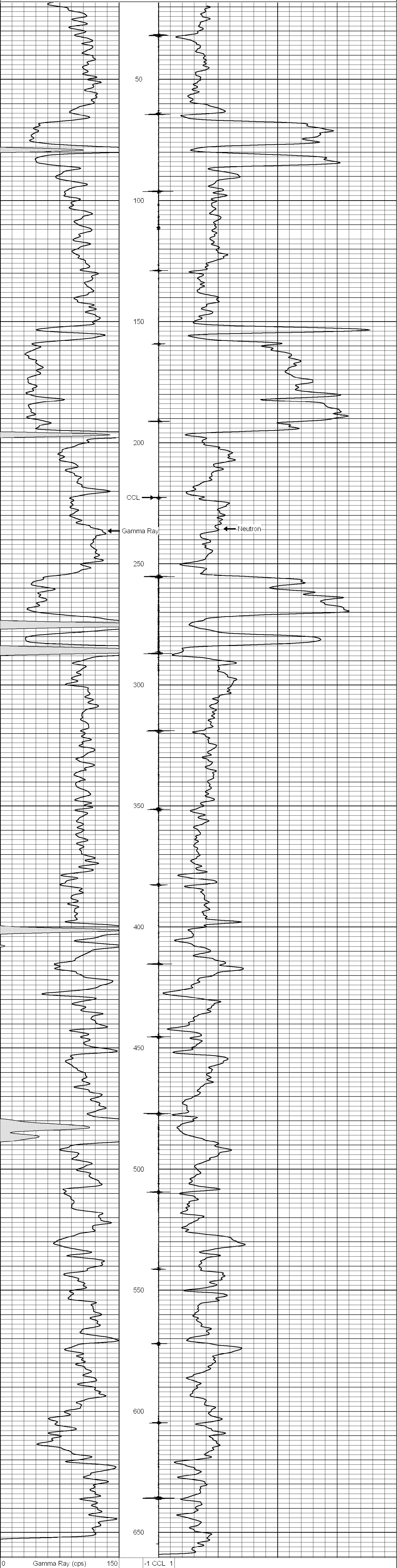
All interpretations are opinions based on inferences from electrical or other measurements and we cannot and do not guarantee the accuracy or correctness of any interpretation, and we shall not, except in the case of gross or willful negligence on our part, be liable or responsible for any loss, costs, damages, or expenses incurred or sustained by anyone resulting from any interpretation made by any of our officers, agents or employees. These interpretations are also subject to our general terms and conditions set out in our current Price Schedule.

Comments

Drilling Contractor :
CST Oil & Gas Corporation

Database File: groves 8-32c-1.db
 Dataset Pathname: pass1
 Presentation Format: gr-n-ccl
 Dataset Creation: Mon Apr 06 10:48:40 2015 by Log SCH 111116
 Charted by: Depth in Feet scaled 1:240

0	Gamma Ray (cps)	150	-1 CCL 1	10	Neutron (cps)	2100
150	Gamma Ray (cps)	300				



0	Gamma Ray (cps)	150	-1 CCL 1	10	Neutron (cps)	2100
150	Gamma Ray (cps)	300				