



**ORNISH**  
WIRELINE  
SERVICES, INC.  
CHANUTE, KANSAS

**GAMMA RAY  
NEUTRON  
COMPLETION LOG**

Company LAYMON OIL II, LLC  
Well GLADES #89-16  
Field VERNON  
County WOODSON  
State KANSAS

Company LAYMON OIL II, LLC  
Well GLADES #89-16  
Field VERNON  
County WOODSON State KANSAS

Location: API # : 15-207-29409-00-00 Other Services  
SEC 9 TWP 24S RGE 16E  
SW-SE-SW-SW  
165' FSL & 445' FEL  
Permanent Datum G.L. Elevation 1031' EST  
Log Measured From G.L. K.B.  
Drilling Measured From G.L. D.F.  
G.L. 1031' EST.

Date	4-19-2017		
Run Number	1-NEWWELL		
Depth Driller	1120'		
Depth Logger	1111.5'		
Top Log Interval	SURFACE		
Bottom Logged Interval	1111.5'		
Fluid Level	FULL		
Type Fluid	WATER		
Production Casing	2 7/8" @ 1112'	@	@
Max. Recorded Temp.			
Estimated Cement Top			
Calculated Cement Top			
Amount & Type Cement			
Amount & Type Admix			
Drilling Contractor	COMPANY TOOLS		
Equipment Number	109		
Location			
Recorded By	UDEN, D.		
Witnessed By	LAYMON, M.	GALEMORE, L.	

<<< Fold Here >>>

All interpretations are opinions based on inferences from electrical or other measurements and we cannot and do not guarantee the accuracy or correctness of any interpretation, and we shall not, except in the case of gross or willful negligence on our part, be liable or responsible for any loss, costs, damages, or expenses incurred or sustained by anyone resulting from any interpretation made by any of our officers, agents or employees. These interpretations are also subject to our general terms and conditions set out in our current Price Schedule.

**Comments**

THANK YOU

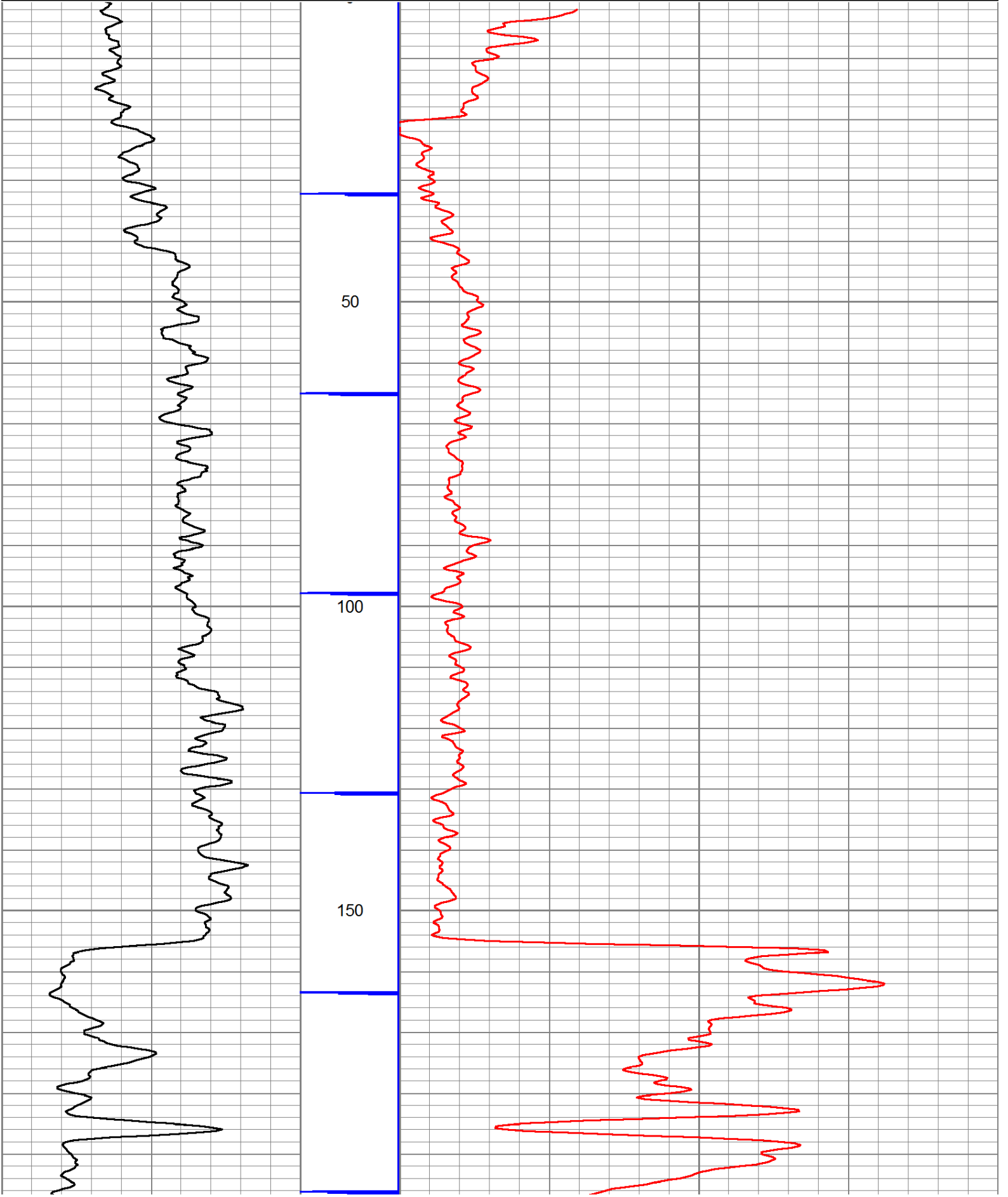
Sensor	Offset (ft)	Schematic	Description	Len (ft)	OD (in)	Wt (lb)

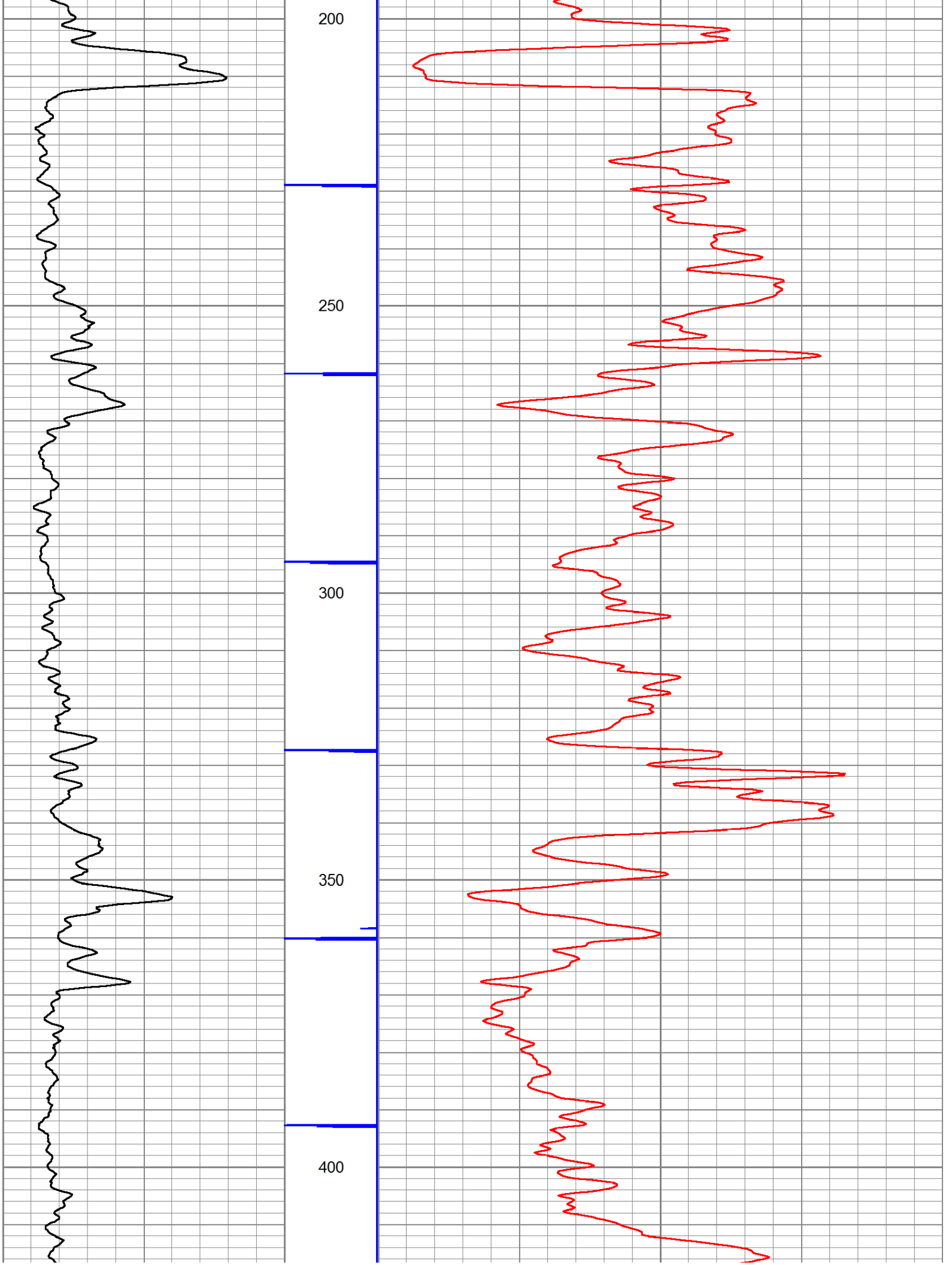
GR	7.59		GR-TITAN_169 (TIT169_001) Titan 1 11/16" Gamma Ray	4.75	1.69	20.00
CCL	5.05		CCL-TITAN_169 (TIT169) Titan 1 11/16" Logging CCL	1.83	1.69	7.50
NEU	0.63		NEU-TITAN (TIT801) TITAN 1 11/16" Neutron	4.33	1.69	25.00

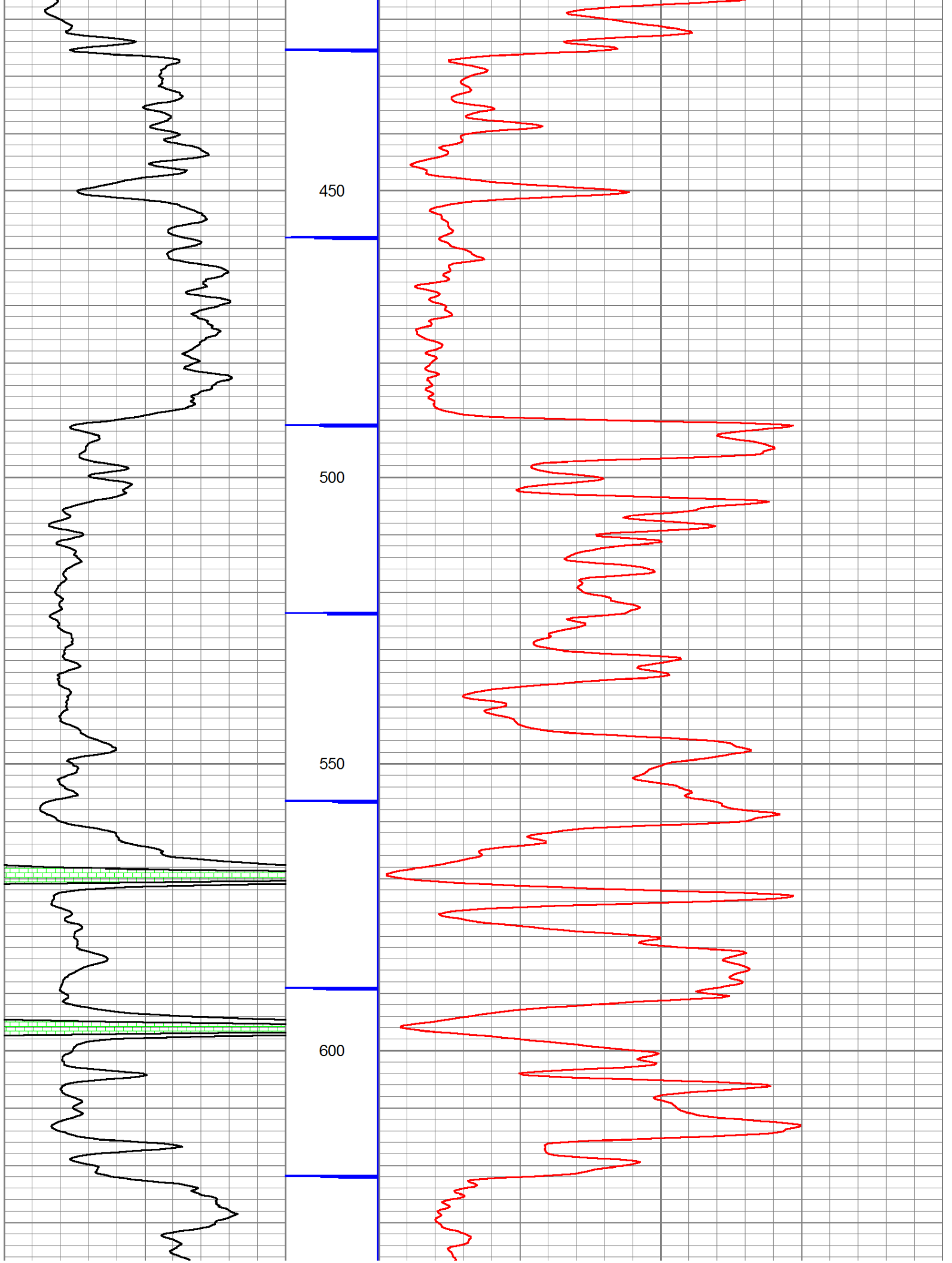
Dataset: glades #89-16.db: field/well/run1/pass2  
 Total Length: 10.92 ft  
 Total Weight: 52.50 lb  
 O.D.: 1.69 in

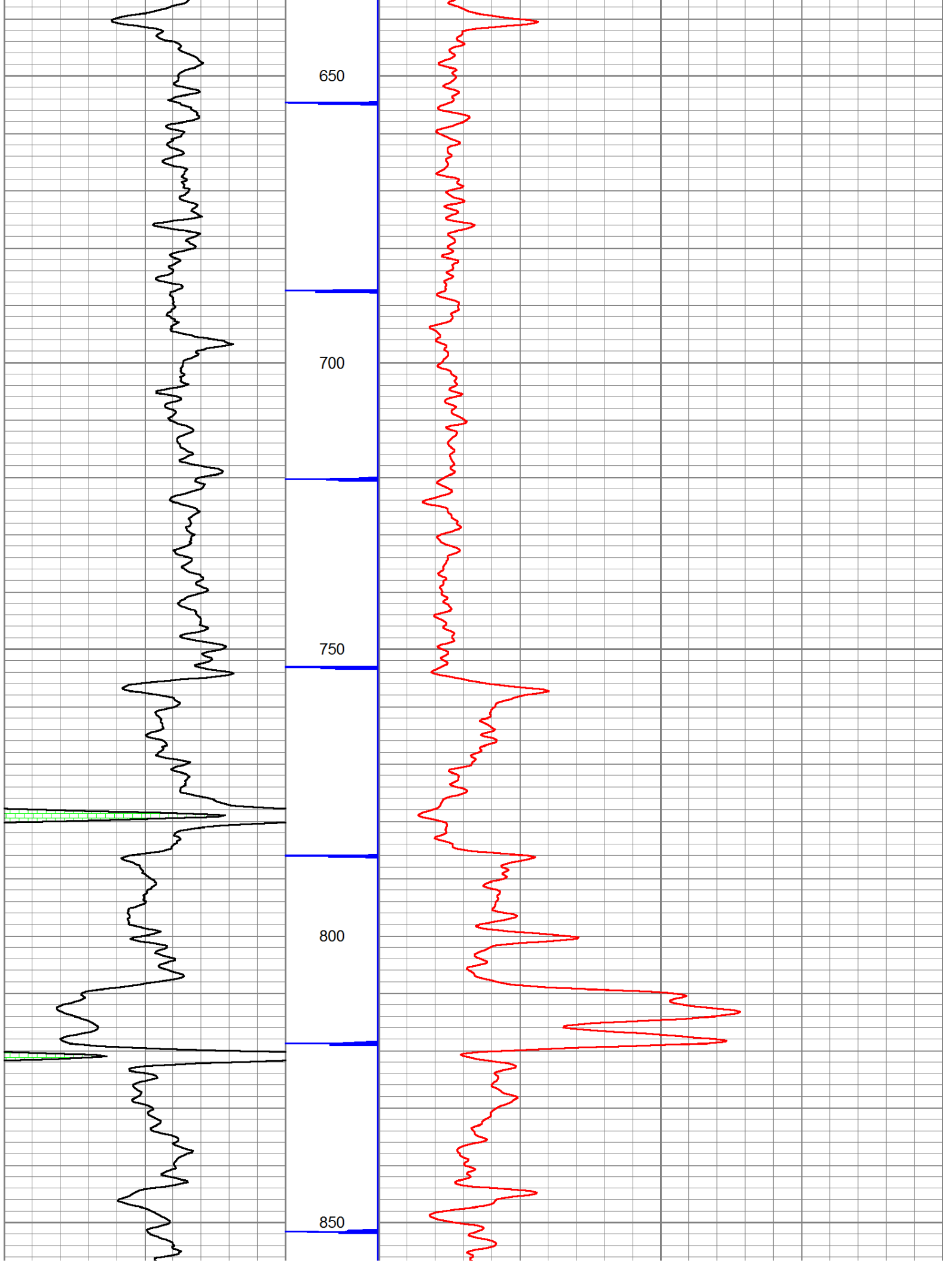
Database File: e:\glades #89-16.db  
 Dataset Pathname: pass2  
 Presentation Format: gr-n-ccl

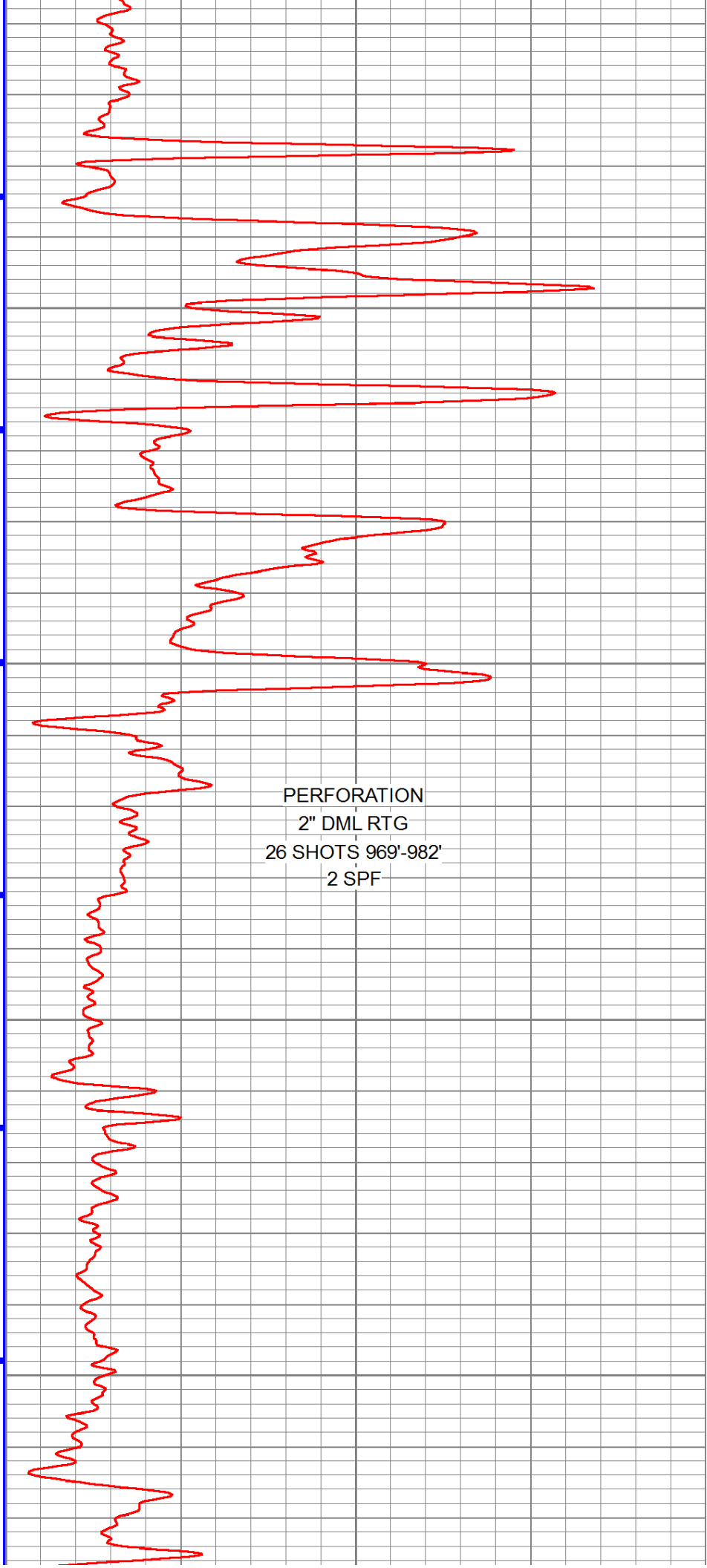
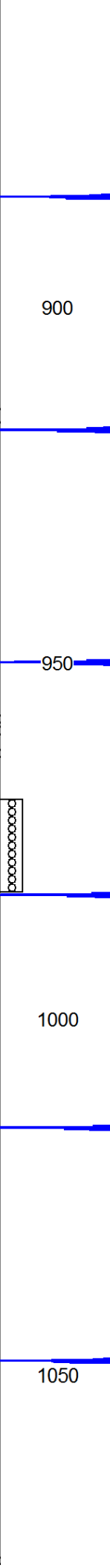
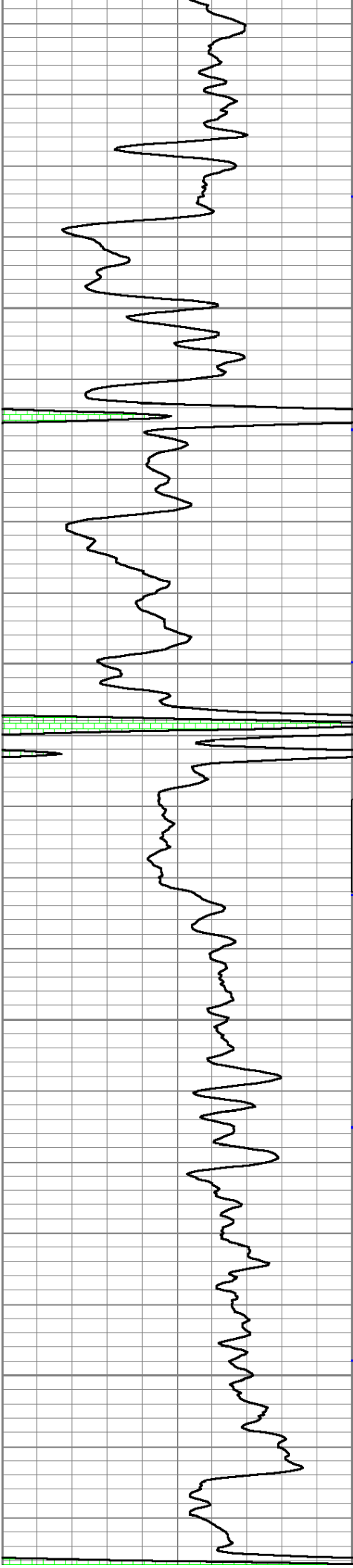
150	gr	300	3	CCLJ.05	200	NEU (cps)	1500
0	GR	150					



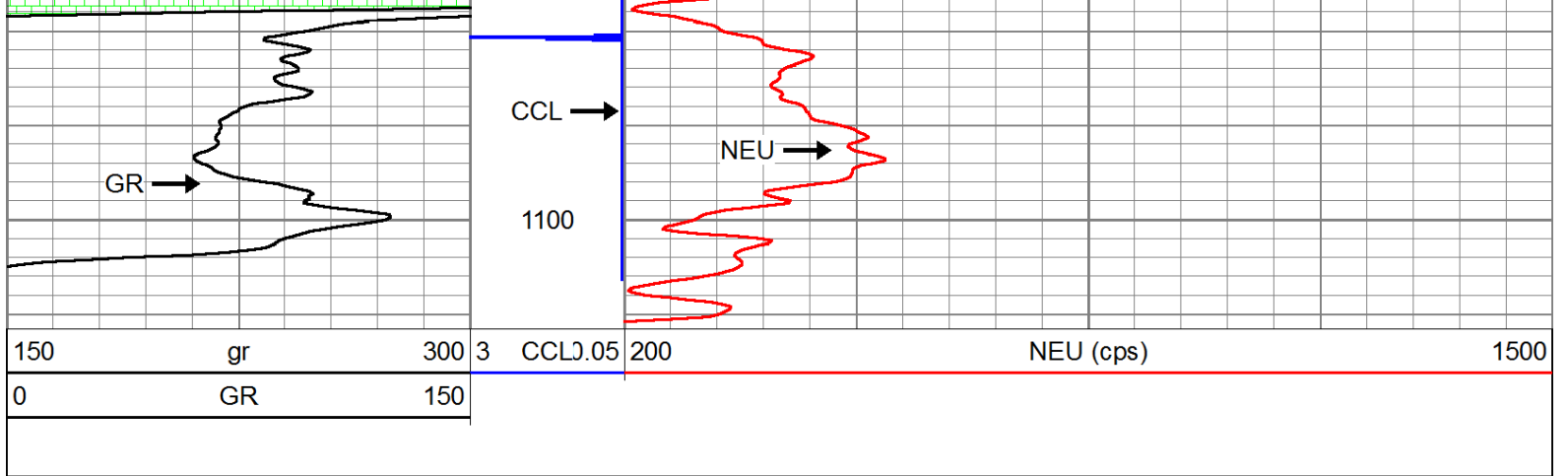








PERFORATION  
2" DML RTG  
26 SHOTS 969'-982'  
2 SPF



Company	LAYMON OIL II, LLC
Well	GLADES #89-16
Field	VERNON
County	WOODSON SEC. 9 TWP. 24S RGE. 16E
State	KANSAS Date 4-19-2017