

PCG Gamma Ray
api

0

400

Avg Rate of Penetration
feet per hr

300

0

MD
ft

Survey

Survey

1:240

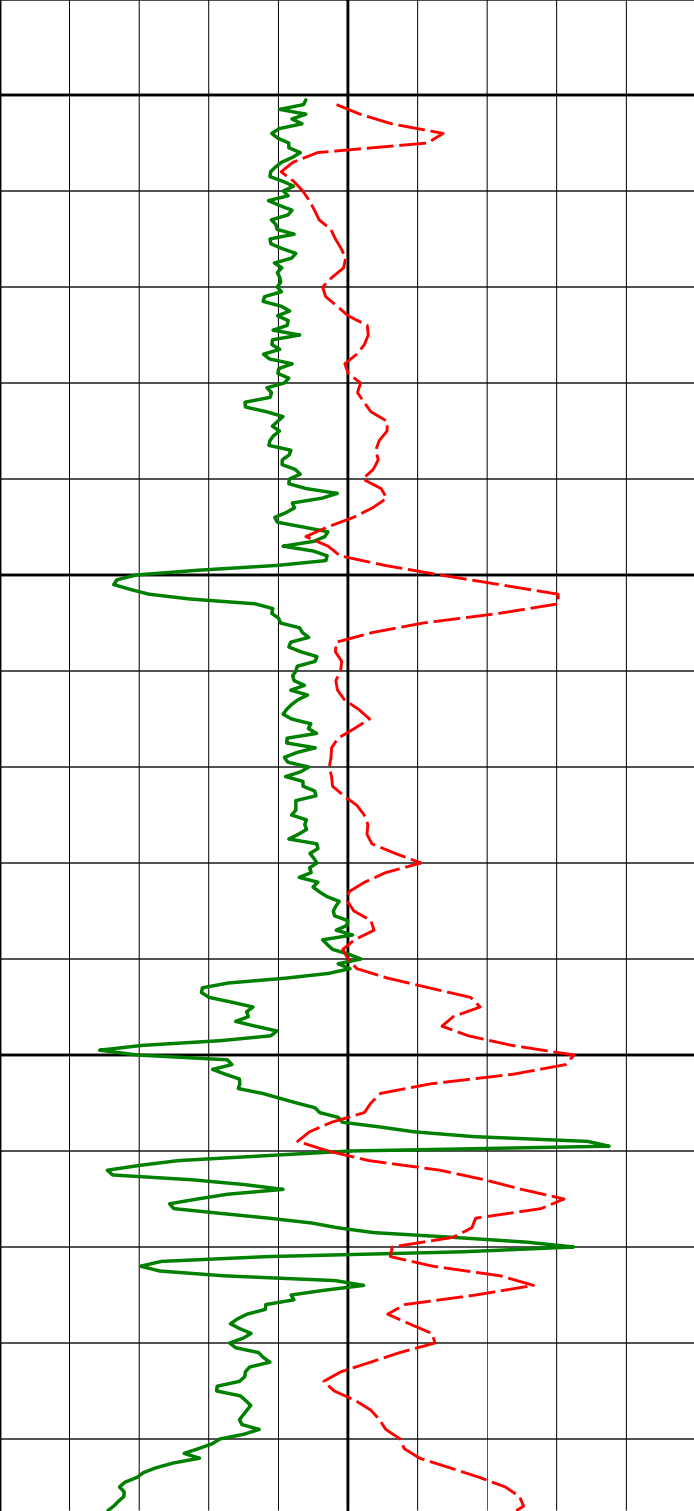
Depth

Inclination

Azimuth

TVD

Vertical Sec



3400

3440'

0.41°

74.75°

3436.36°

102.8'

3450

3500

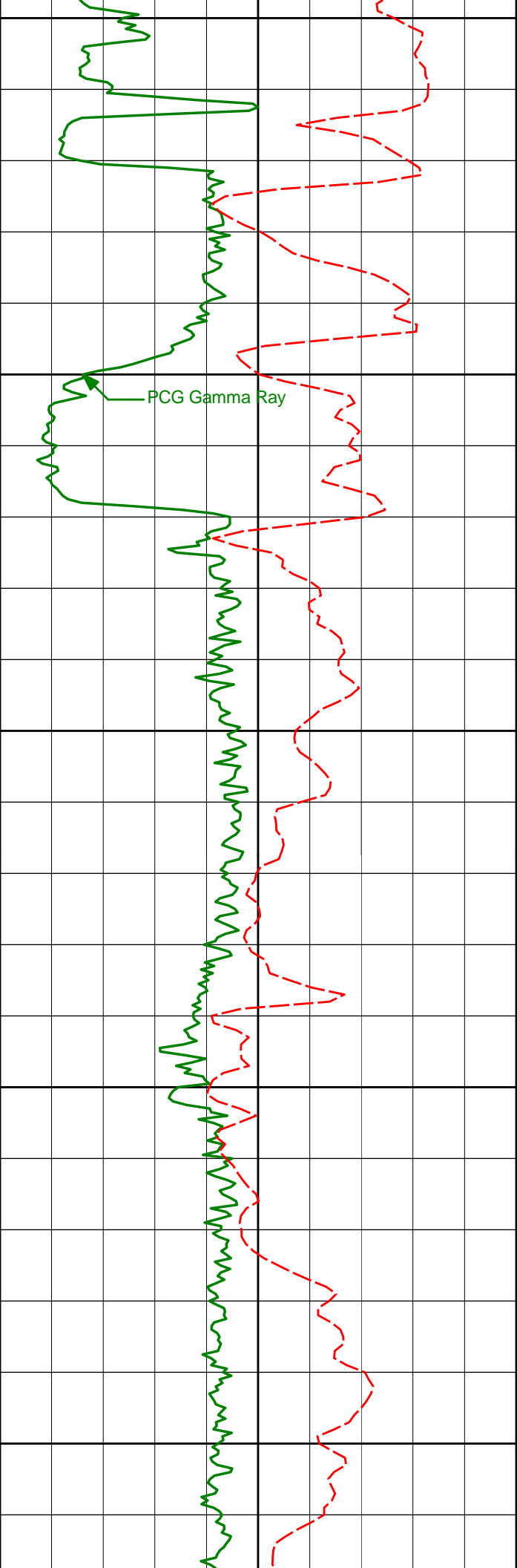
3534'

0.39°

75.51°

3530.36°

103.0'



3550

3600

3650

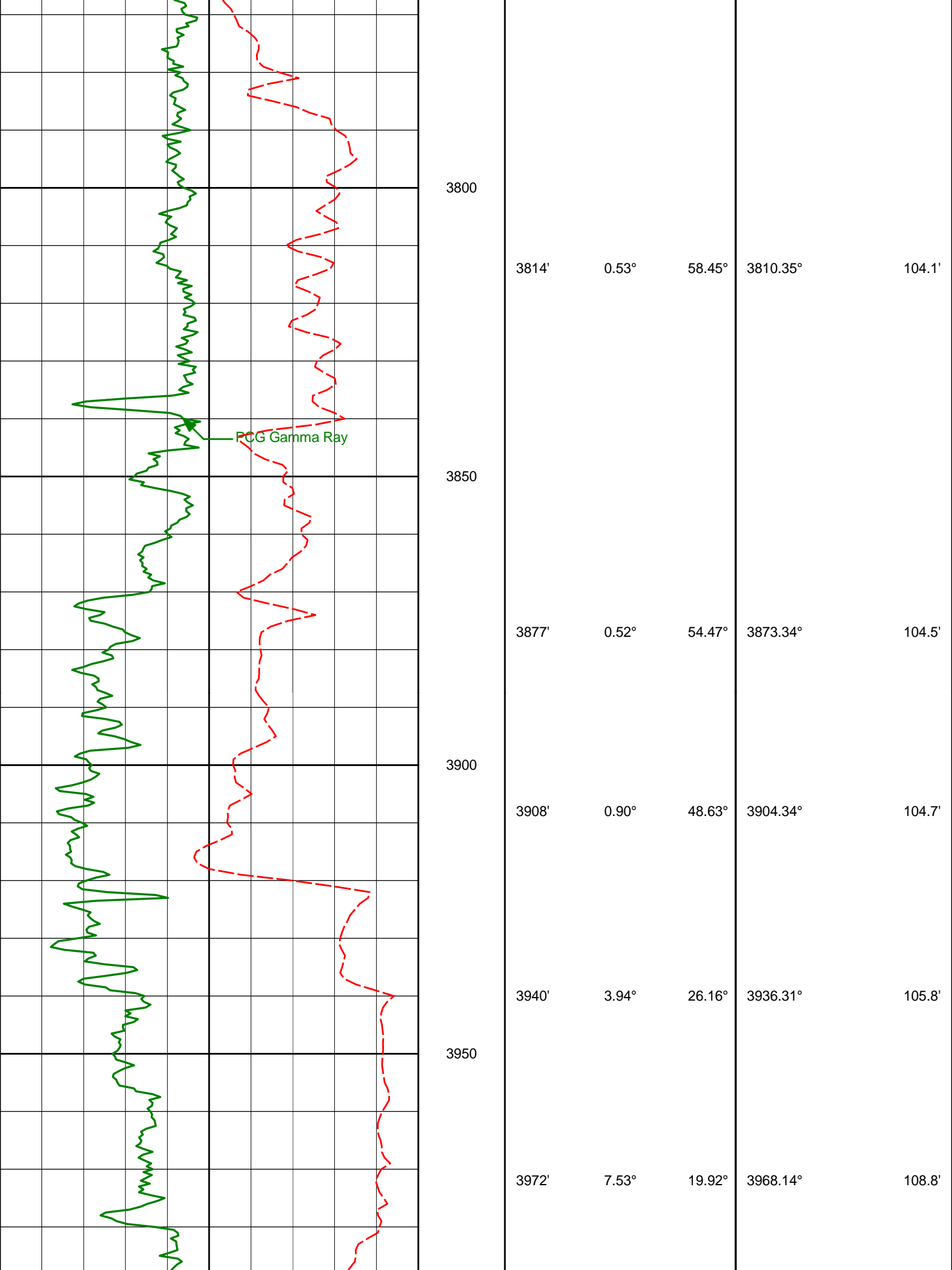
3700

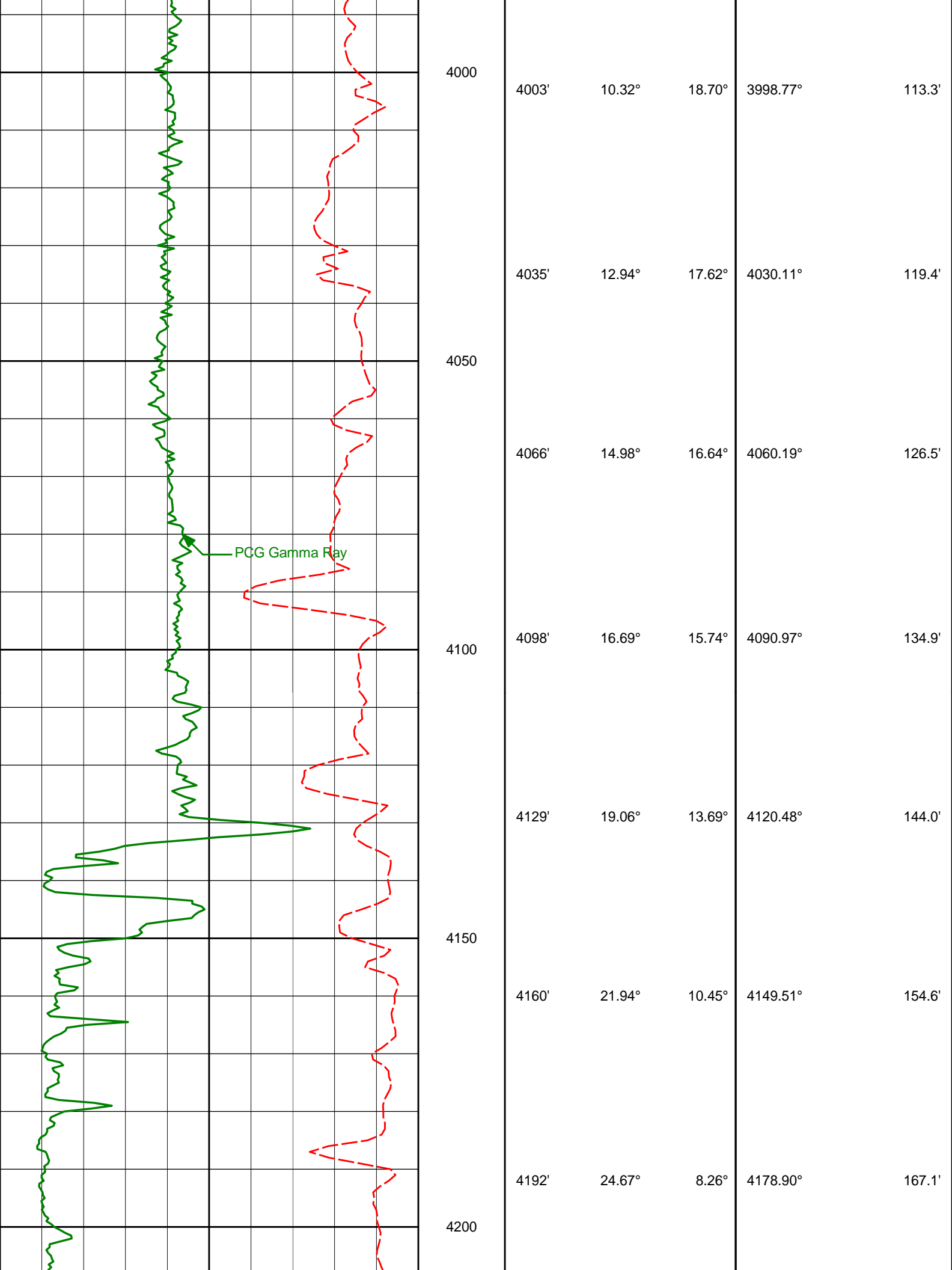
3750

PCG Gamma Ray

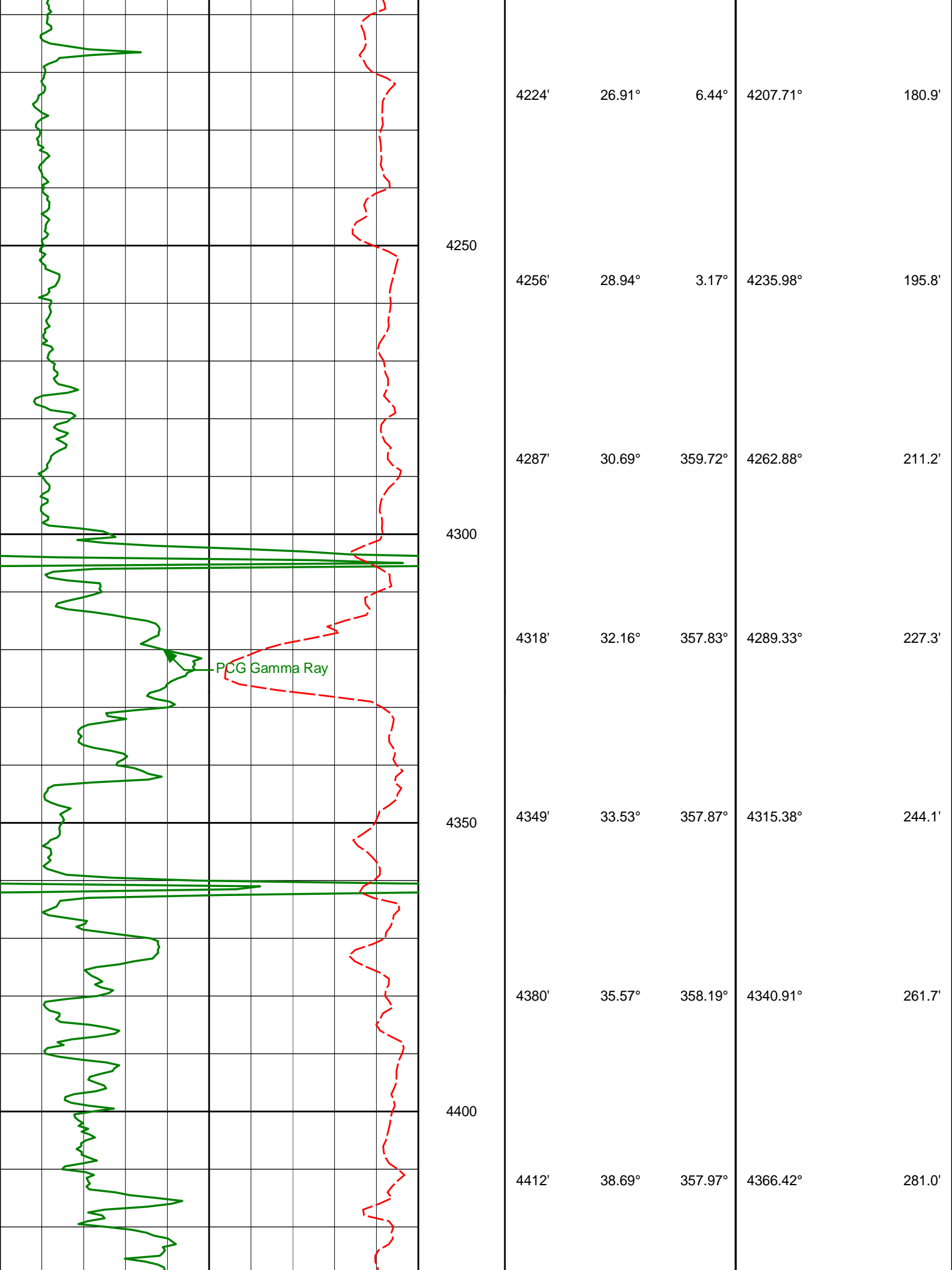
3628' 0.50° 63.64° 3624.35° 103.3'

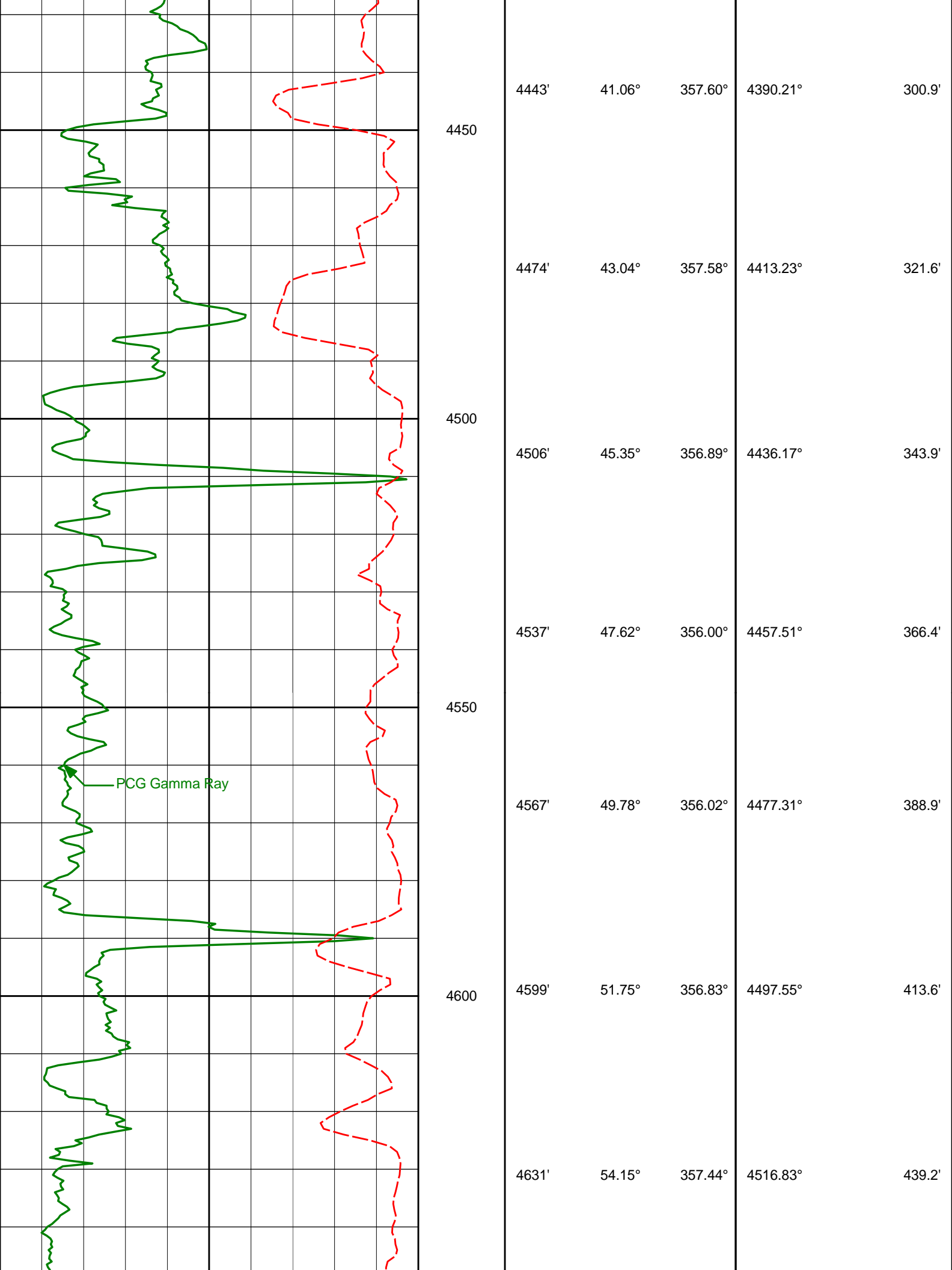
3721' 0.61° 58.76° 3717.35° 103.7'

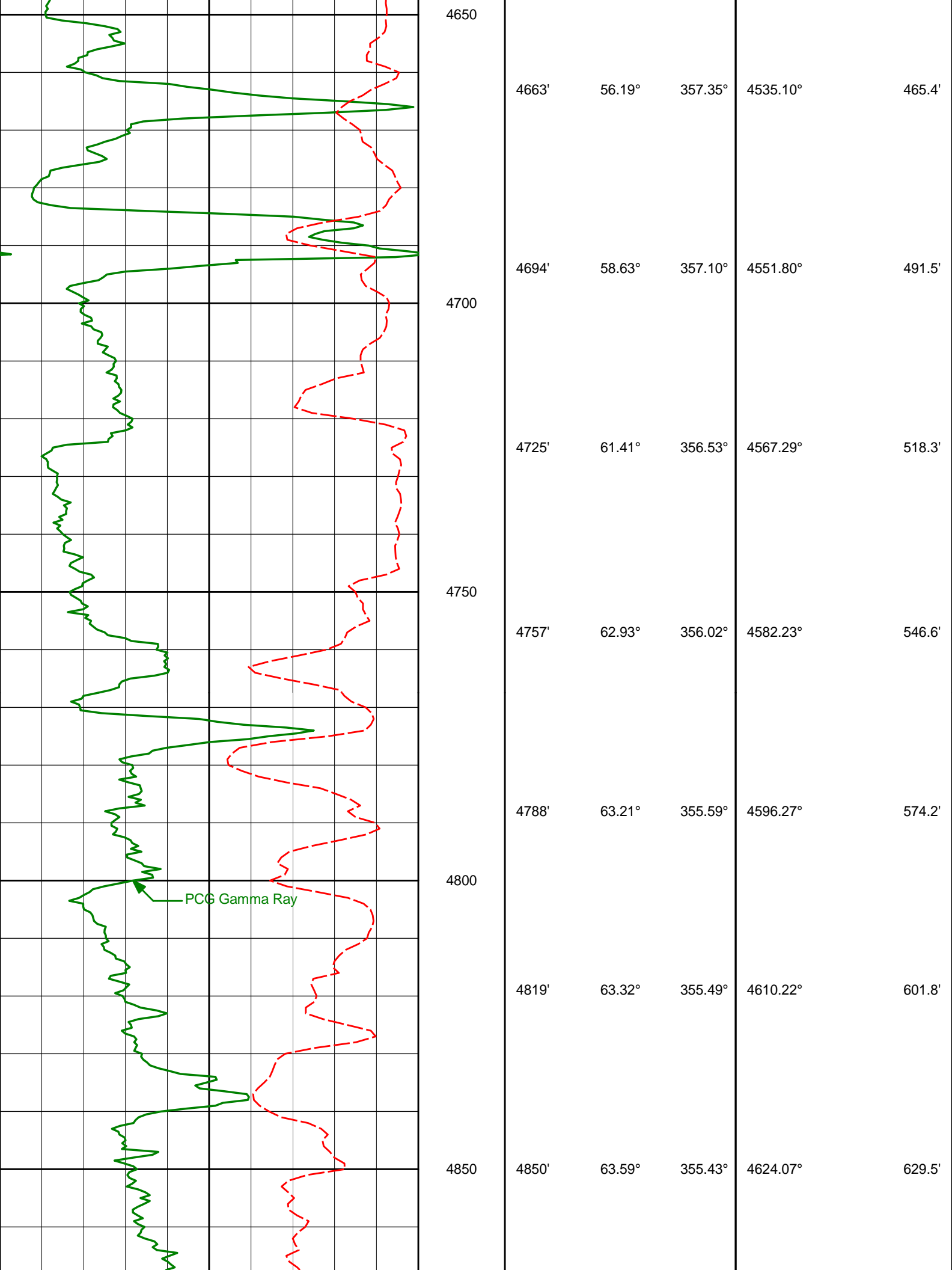




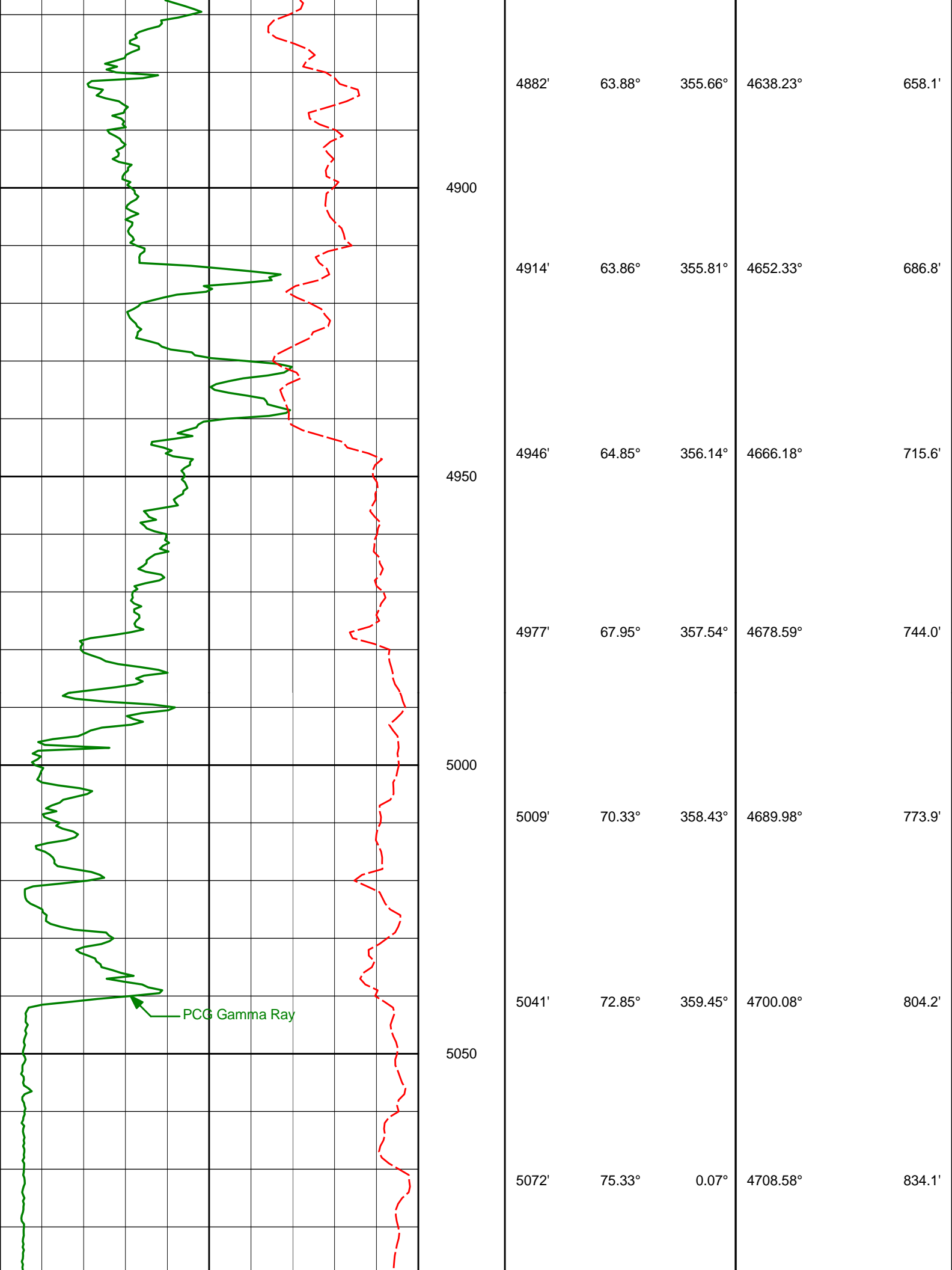
PCG Gamma Ray



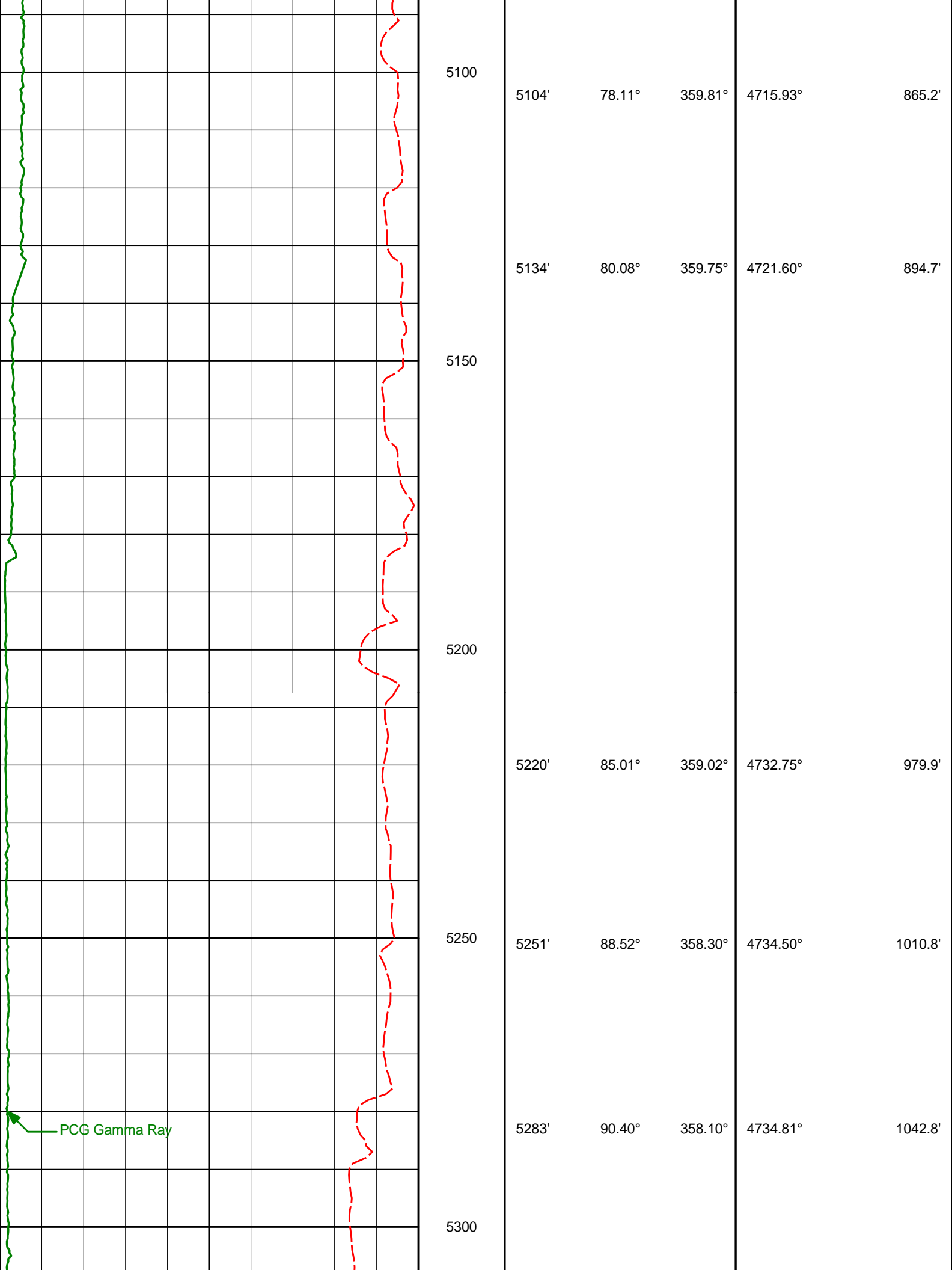




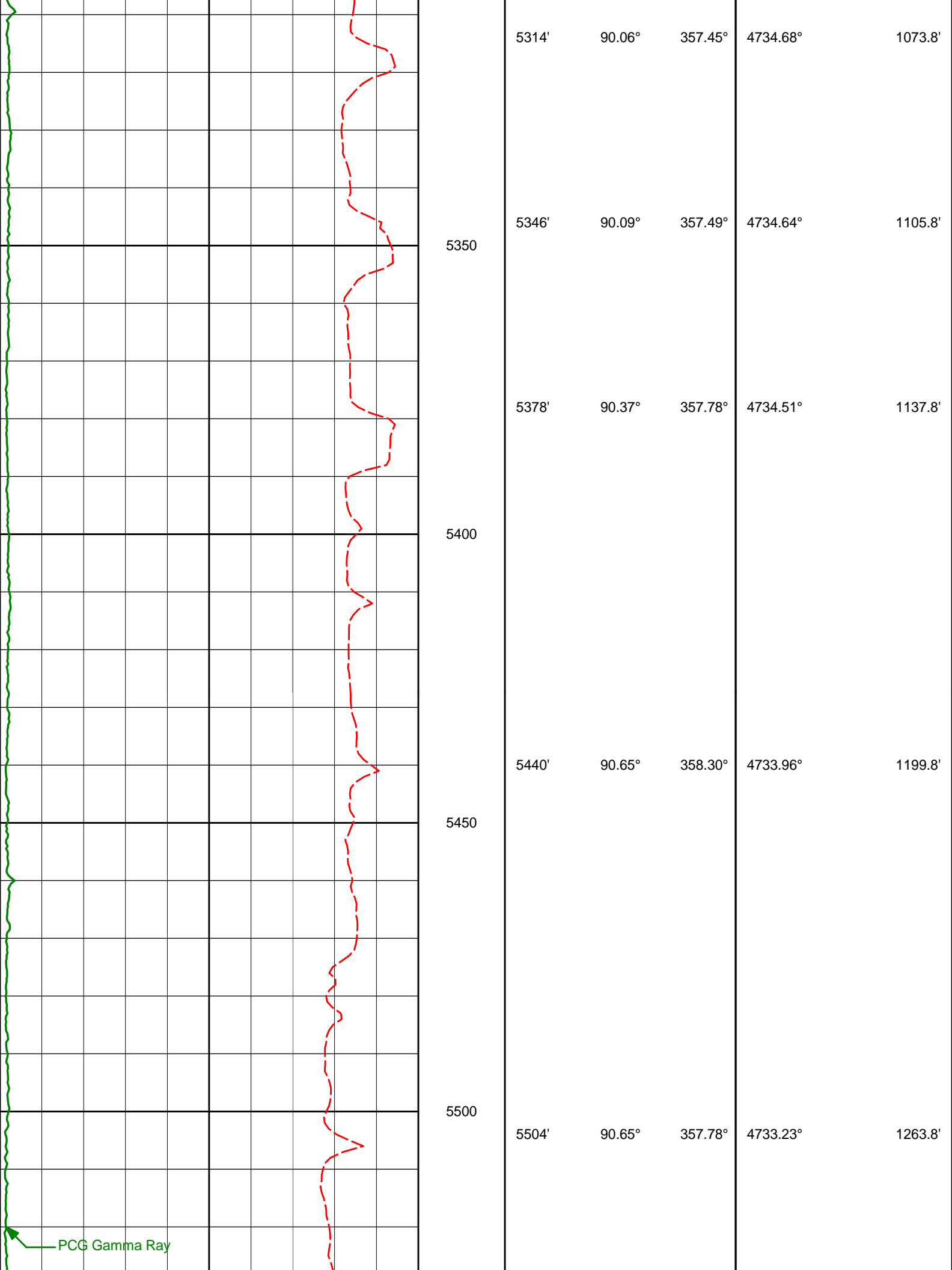
PCG Gamma Ray

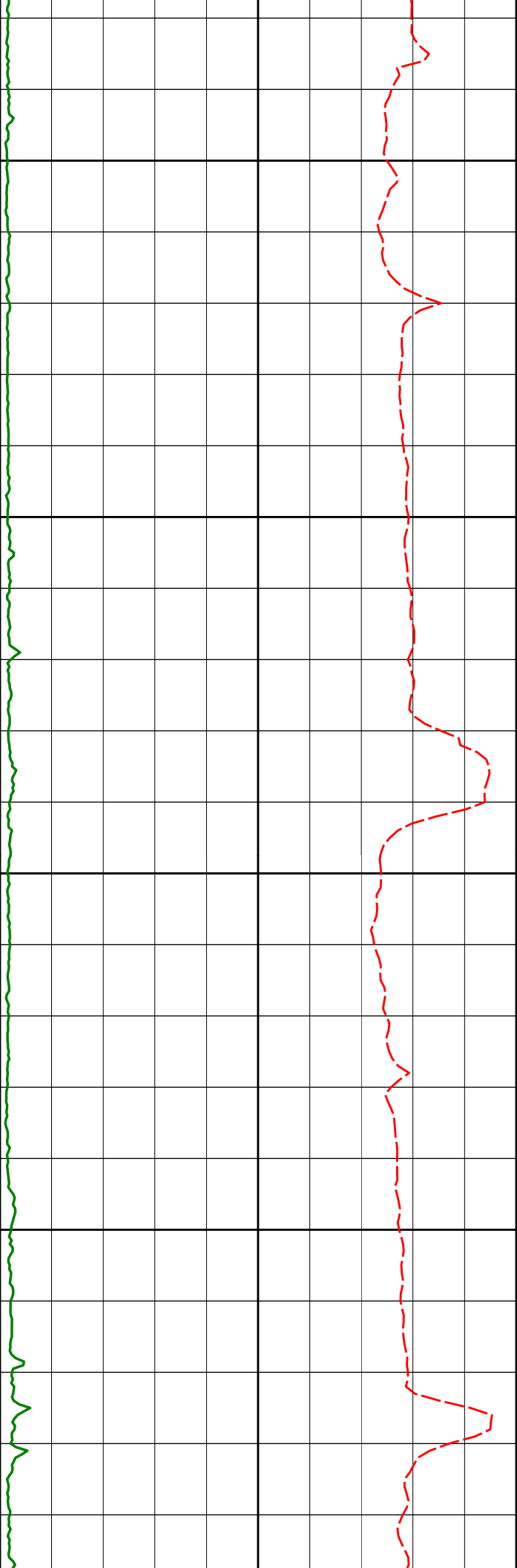


PCG Gamma Ray



PCG Gamma Ray





5550

5567'

90.68°

357.92°

4732.51°

1326.7'

5600

5650

5661'

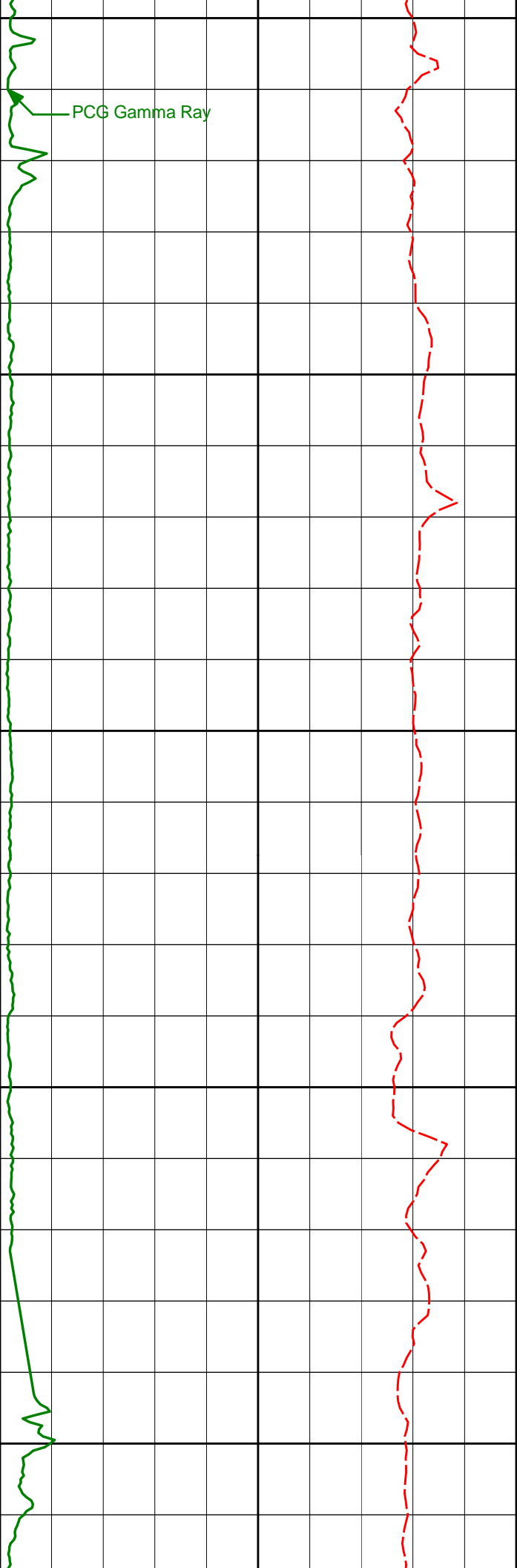
90.74°

359.29°

4731.34°

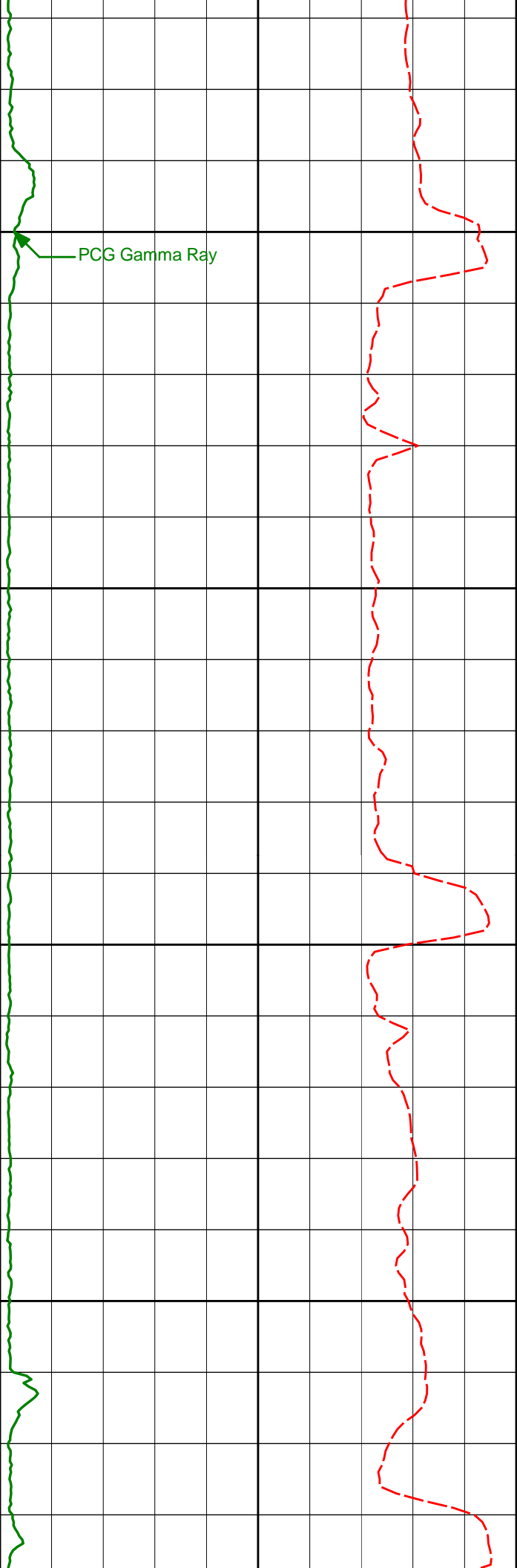
1420.7'

5700



5750
5800
5850
5900
5950

5756'	90.06°	359.36°	4730.68°	1515.7'
5846'	90.09°	358.91°	4730.56°	1605.7'
5935'	89.97°	359.23°	4730.51°	1694.7'



PCG Gamma Ray

6000

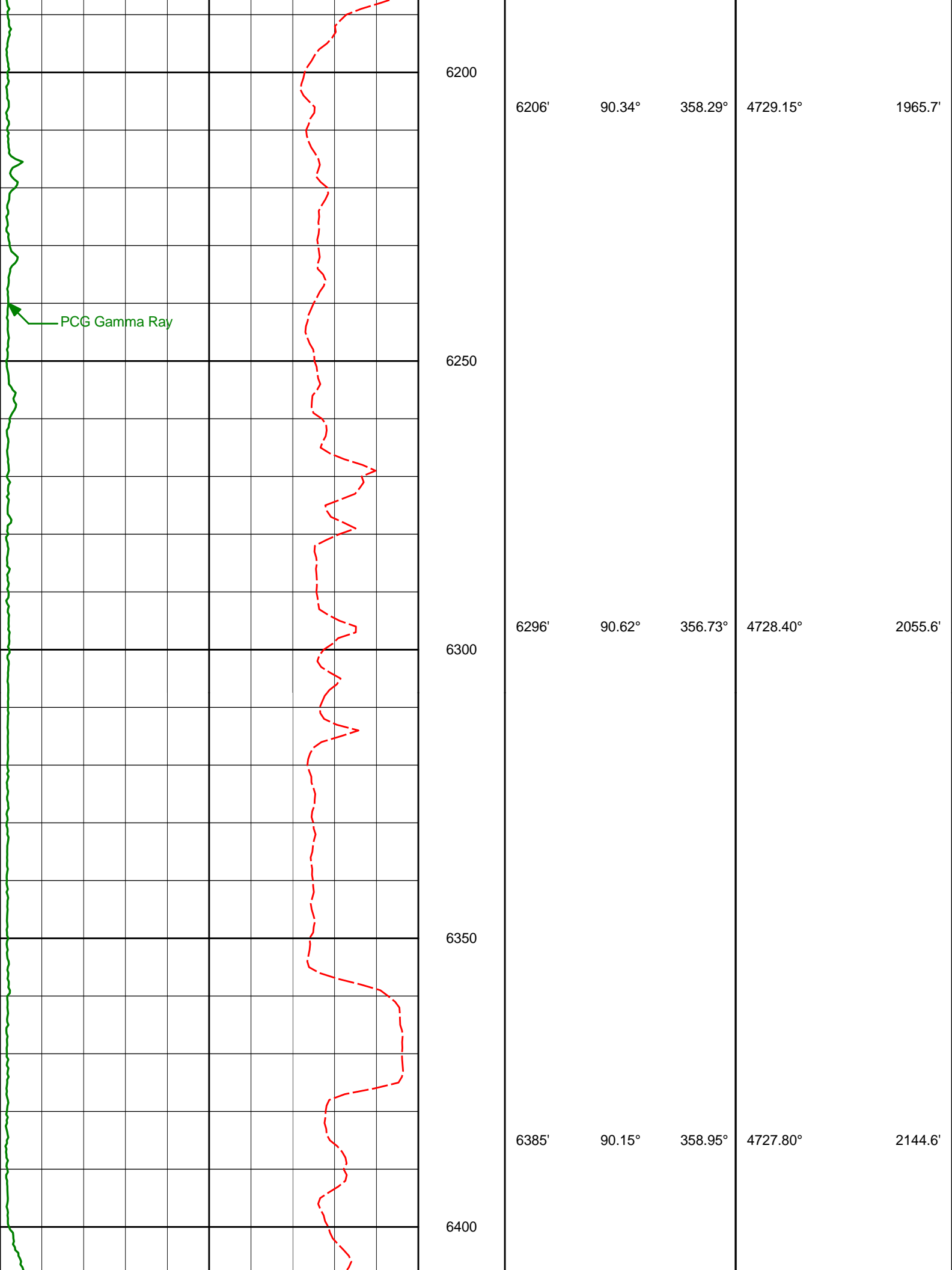
6050

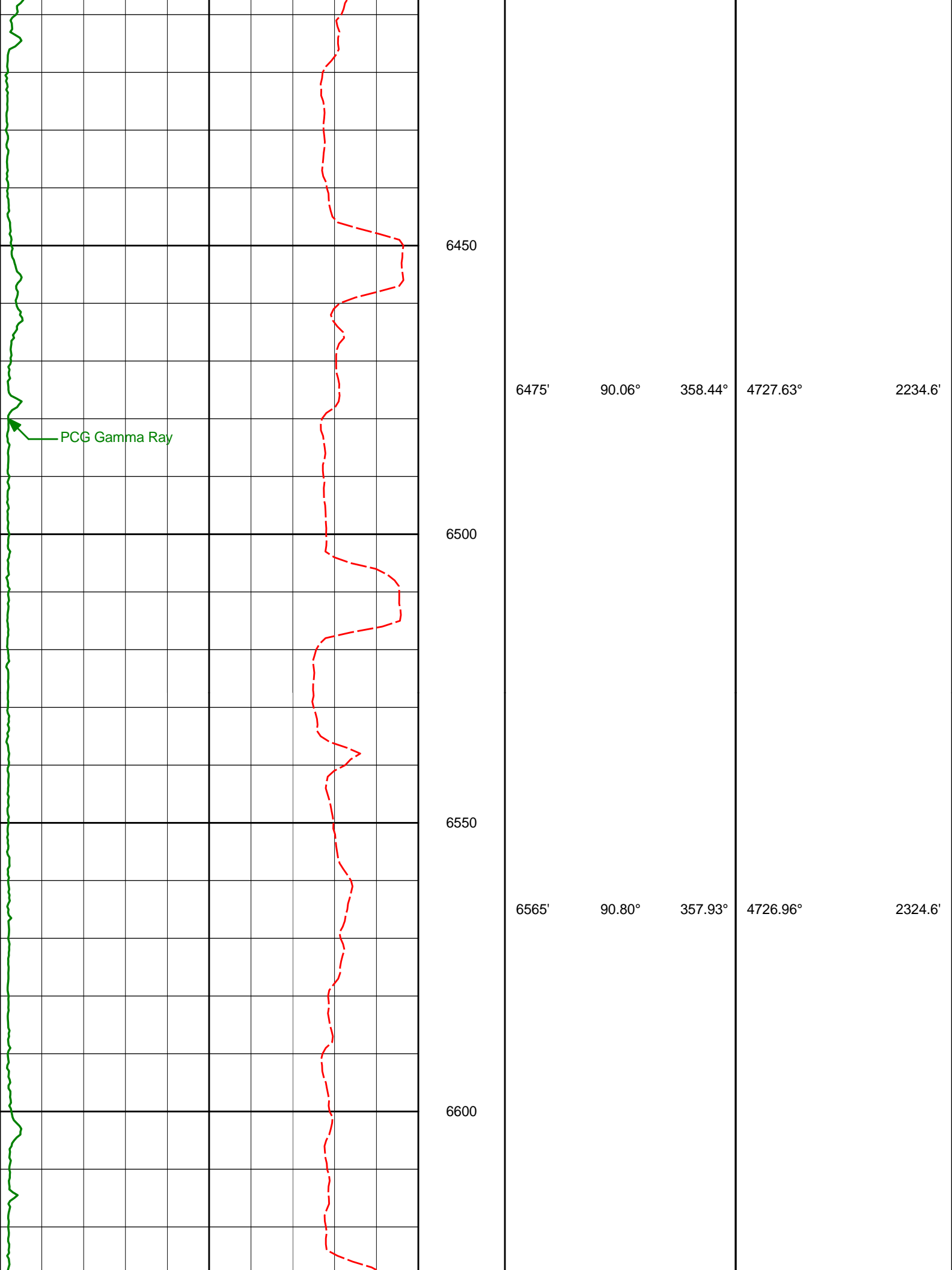
6100

6150

6025' 90.40° 358.62° 4730.22° 1784.7'

6115' 90.31° 357.70° 4729.66° 1874.7'





PCG Gamma Ray

6450

6500

6550

6600

6475'

90.06°

358.44°

4727.63°

2234.6'

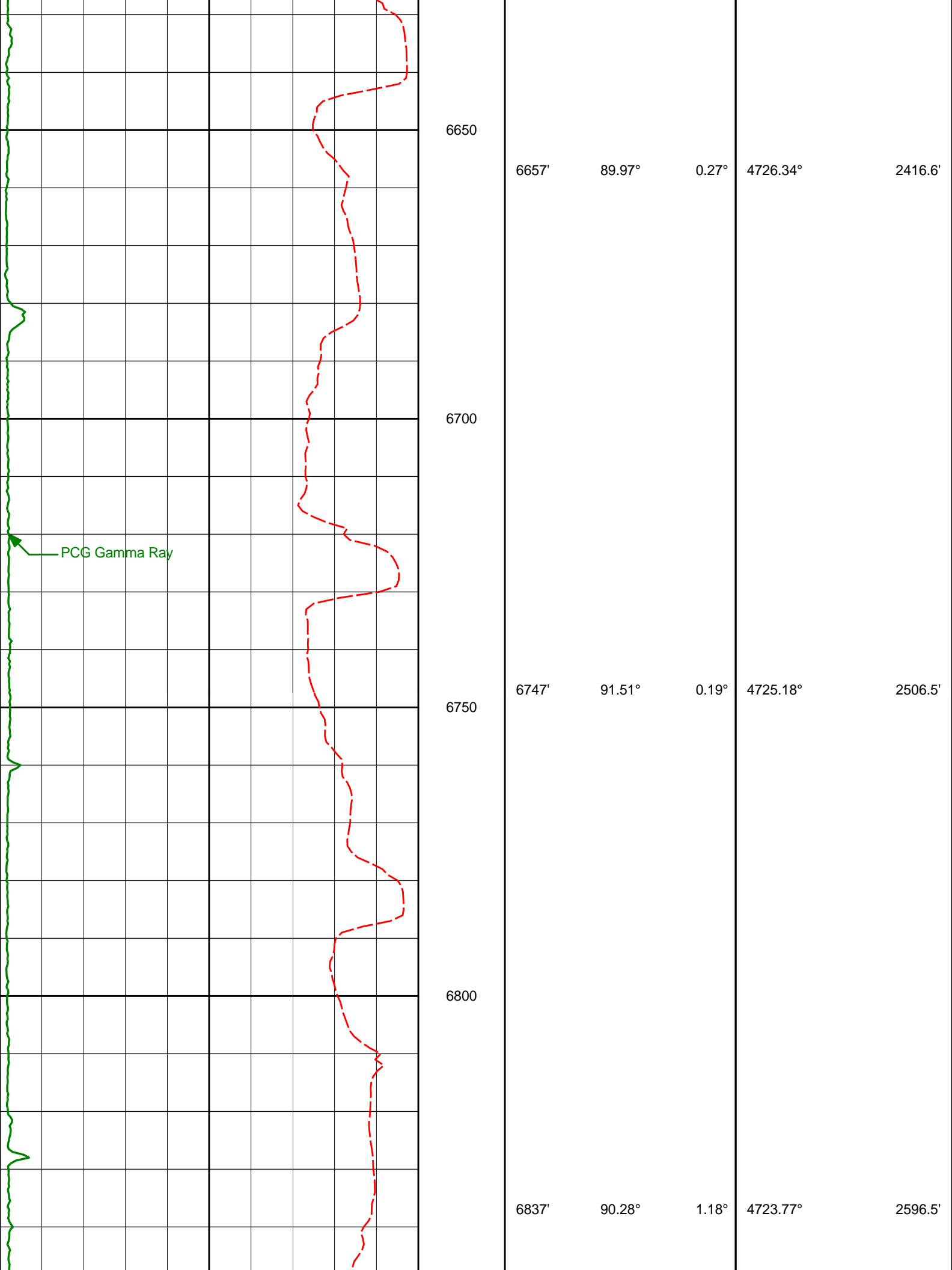
6565'

90.80°

357.93°

4726.96°

2324.6'



PCG Gamma Ray

6650

6657'

89.97°

0.27°

4726.34°

2416.6'

6700

6750

6747'

91.51°

0.19°

4725.18°

2506.5'

6800

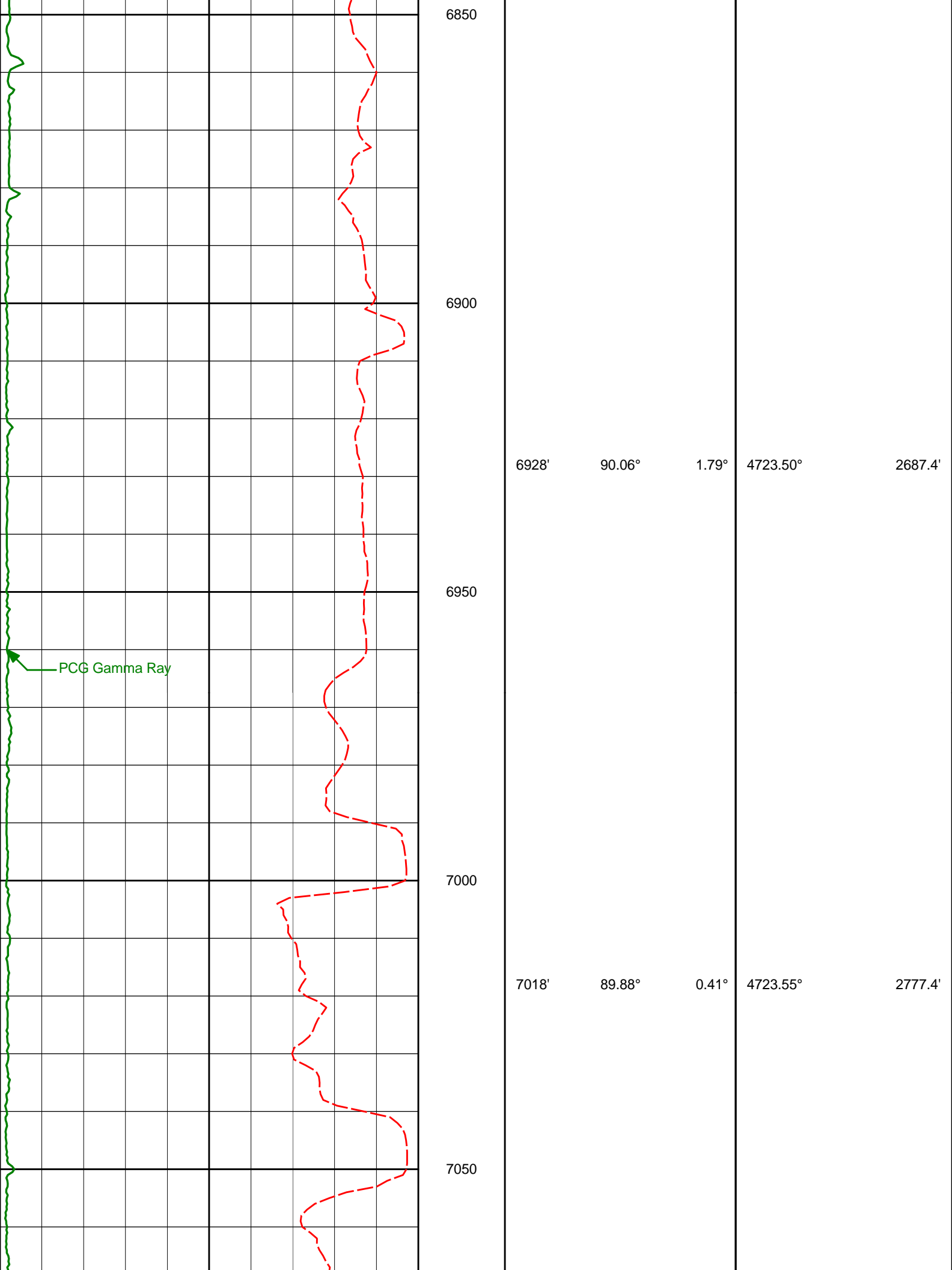
6837'

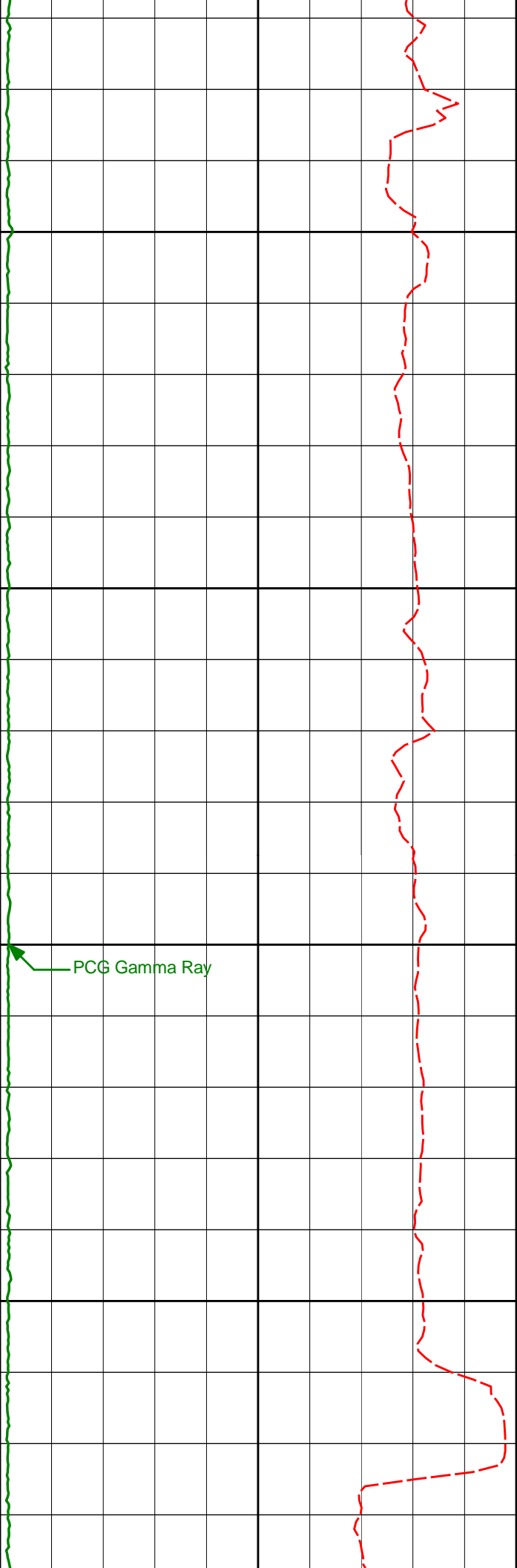
90.28°

1.18°

4723.77°

2596.5'





7100

7109'

90.28°

359.62°

4723.43°

2868.4'

7150

7200

7199'

90.12°

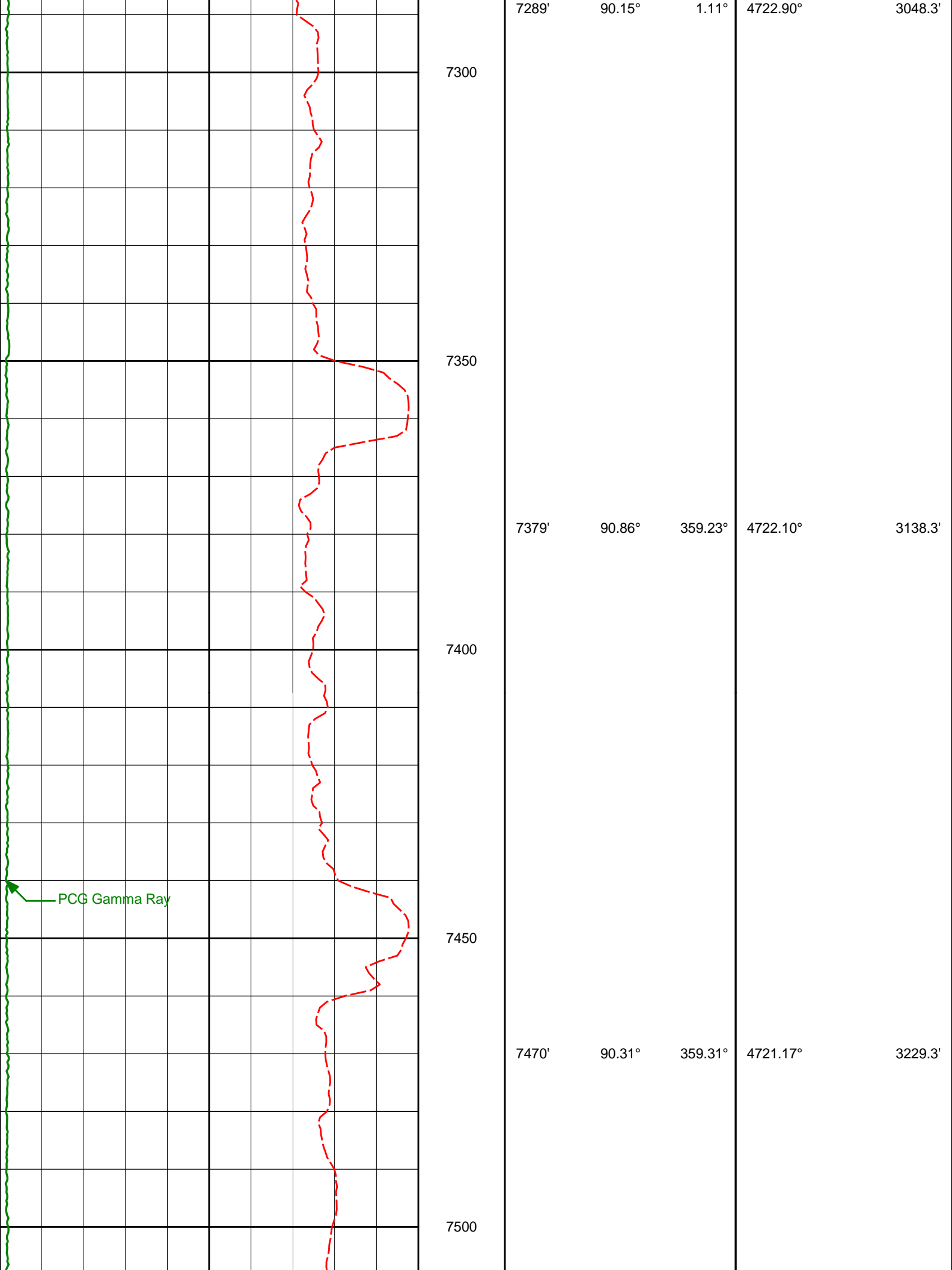
0.24°

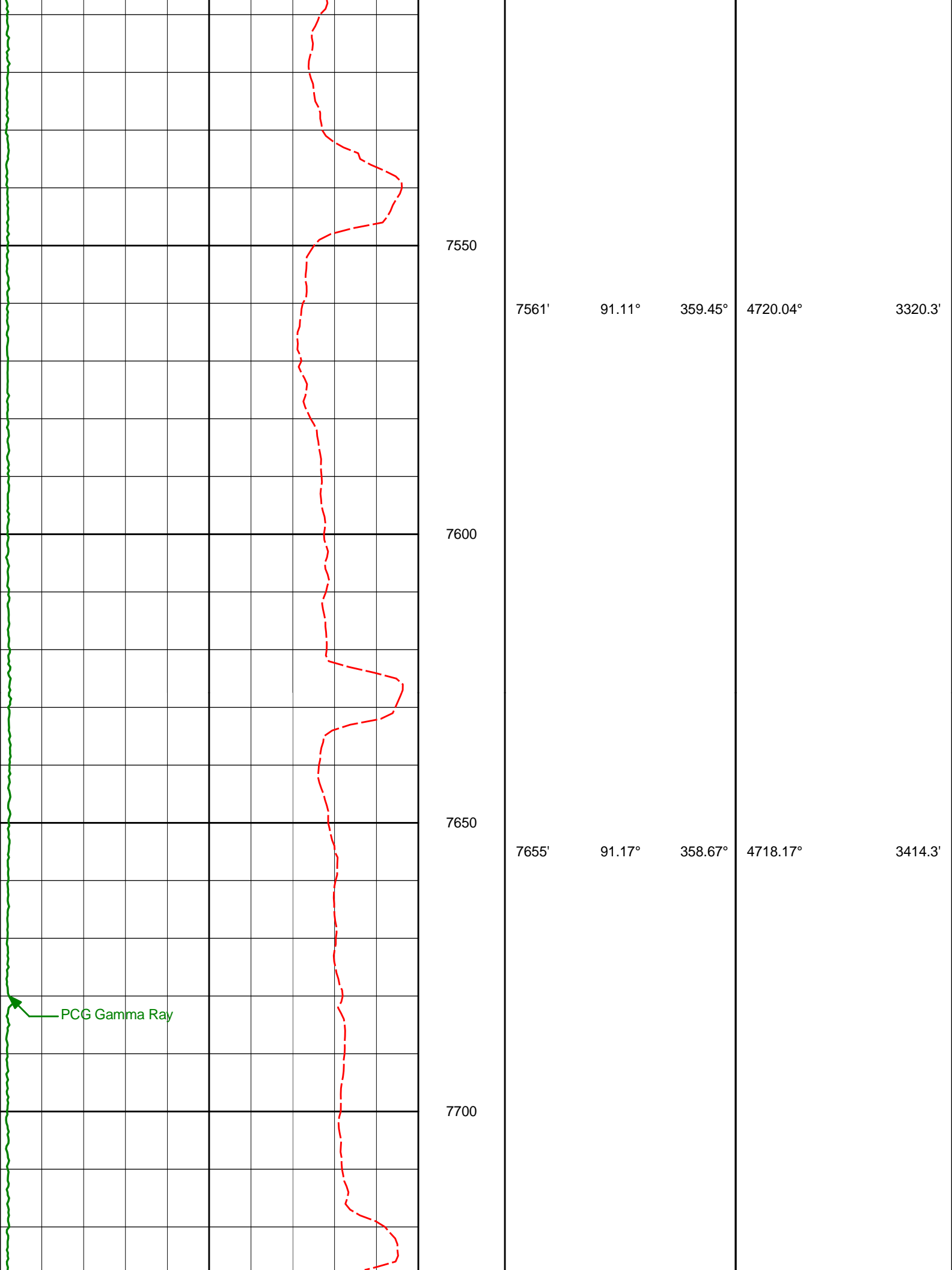
4723.12°

2958.4'

7250

PCG Gamma Ray





7550

7600

7650

7700

7561'

91.11°

359.45°

4720.04°

3320.3'

7655'

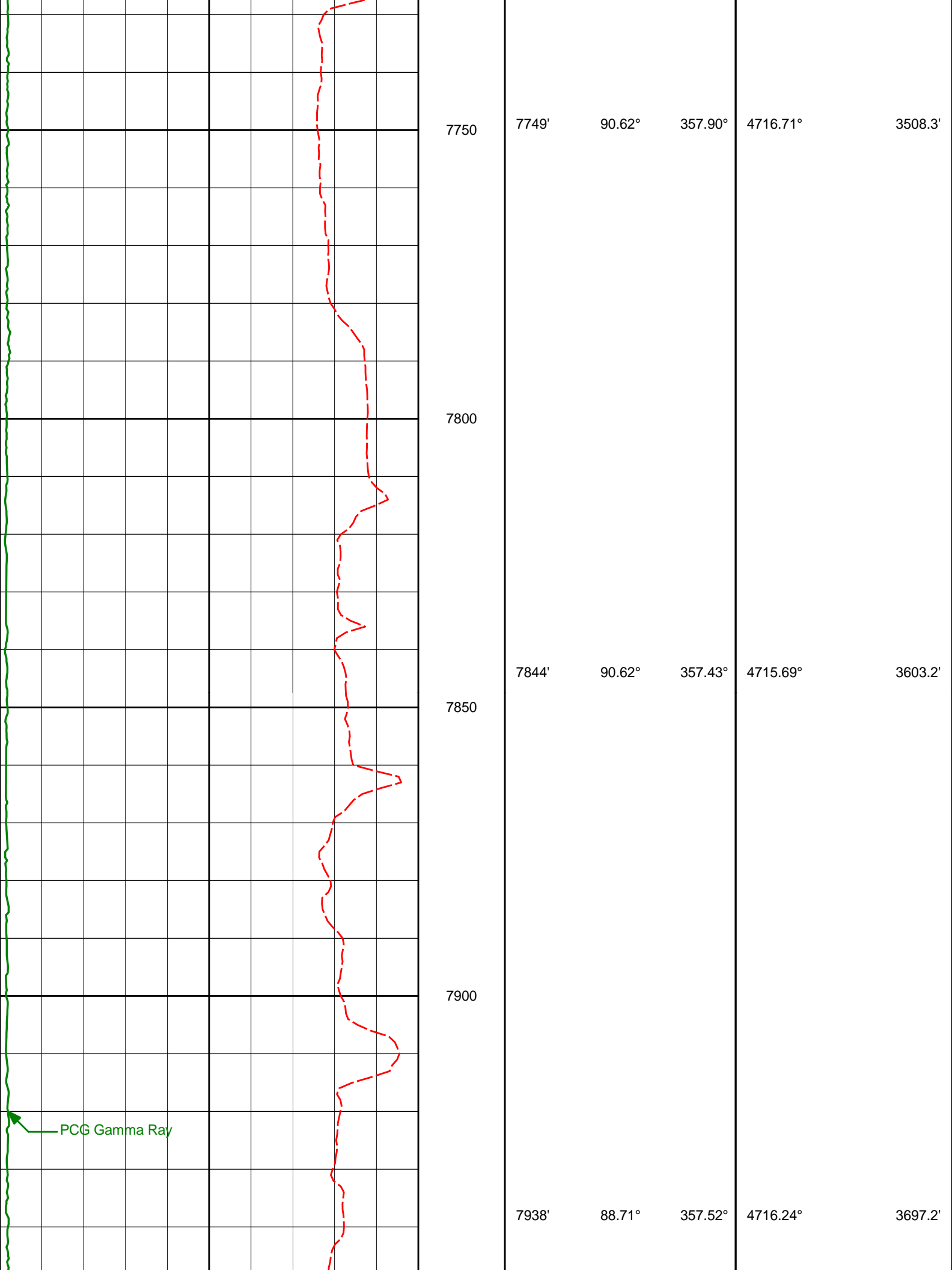
91.17°

358.67°

4718.17°

3414.3'

PCG Gamma Ray



7750

7800

7850

7900

7749'

90.62°

357.90°

4716.71°

3508.3'

7844'

90.62°

357.43°

4715.69°

3603.2'

7938'

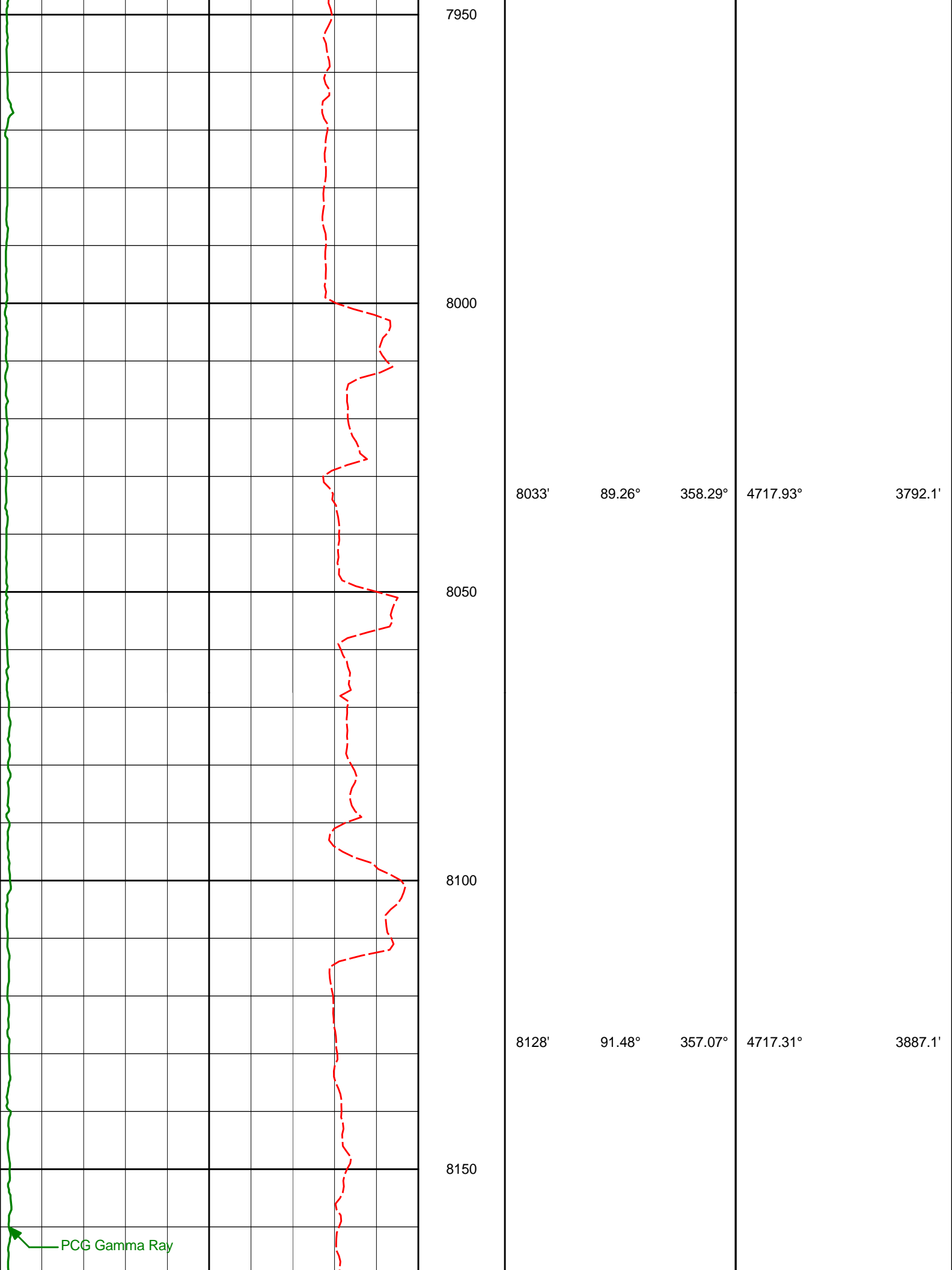
88.71°

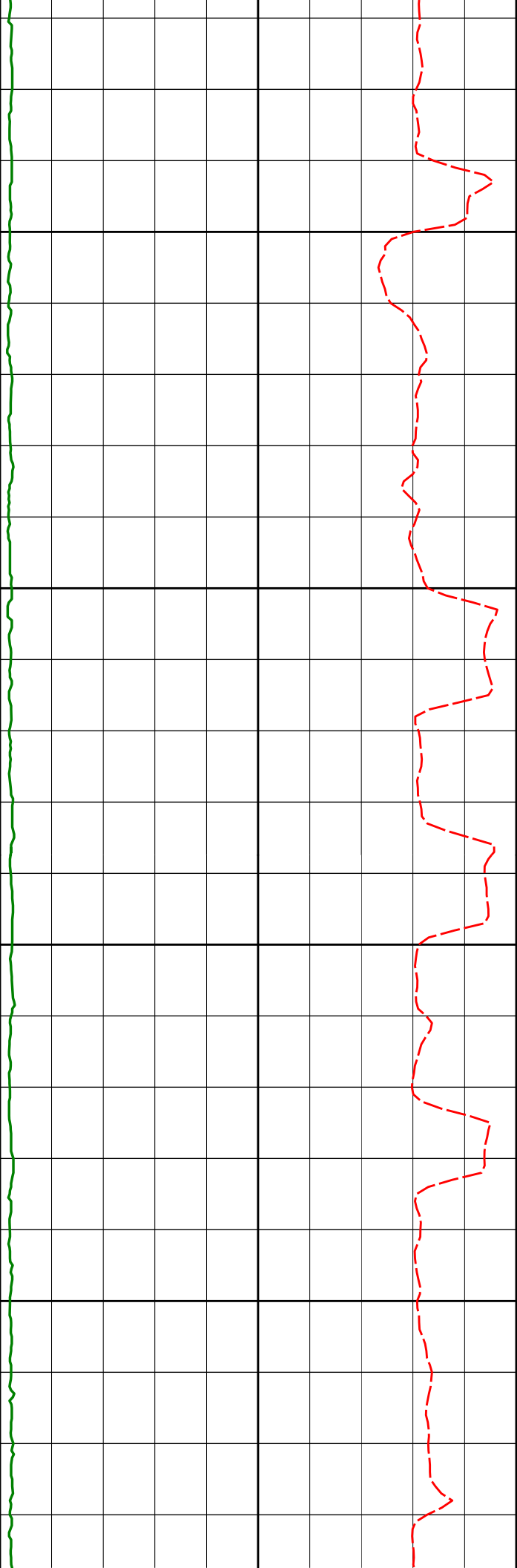
357.52°

4716.24°

3697.2'

PCG Gamma Ray





8200

8222'

89.08°

356.60°

4716.86°

3981.0'

8250

8300

8317'

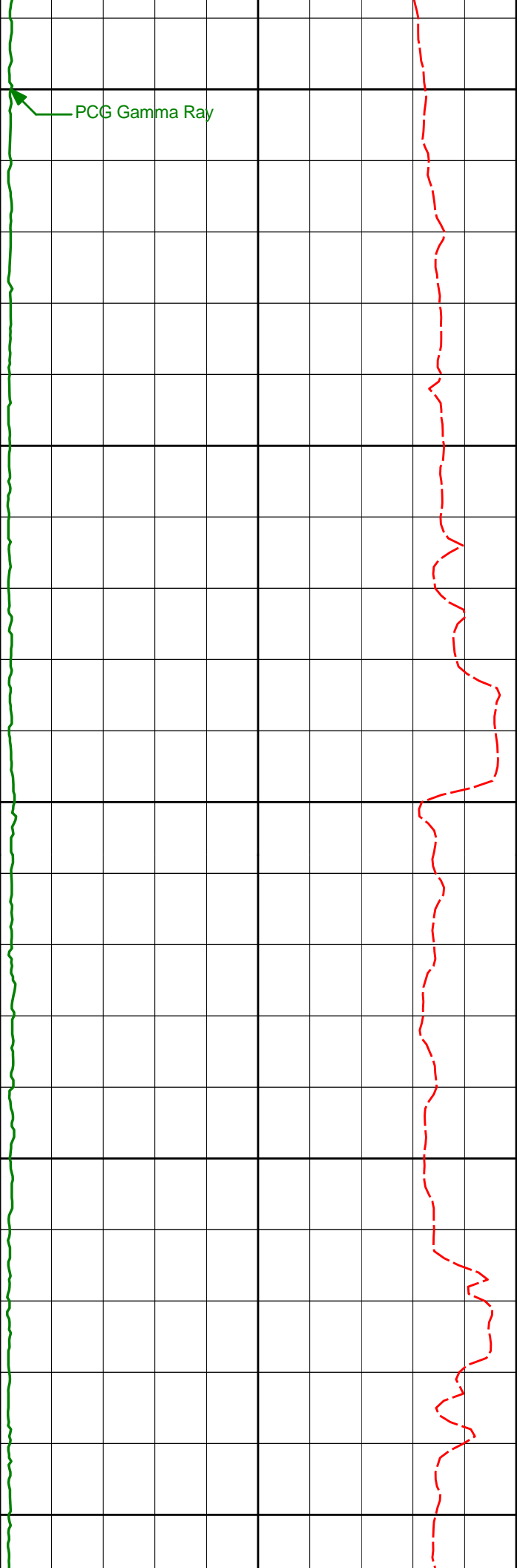
90.55°

358.85°

4717.16°

4076.0'

8350



8400

8412' 90.40° 359.34° 4716.37° 4170.9'

8450

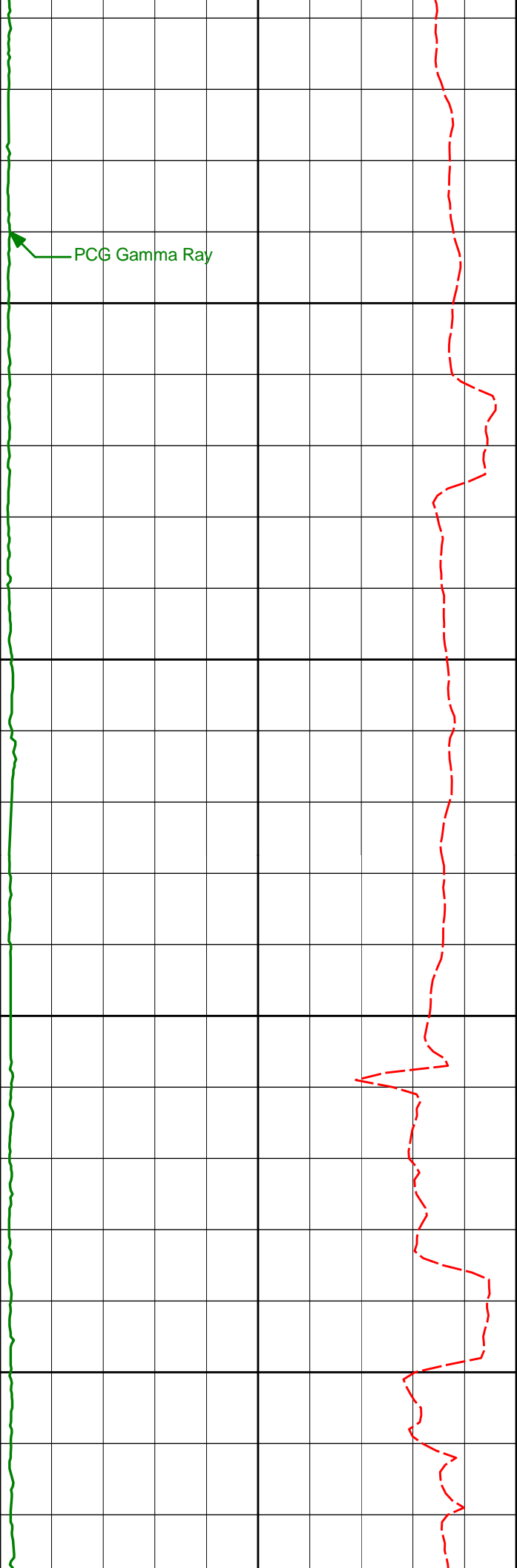
8500

8506' 91.14° 359.46° 4715.11° 4264.9'

8550

8600

8600' 90.43° 358.91° 4713.82° 4358.9'



PCG Gamma Ray

8650

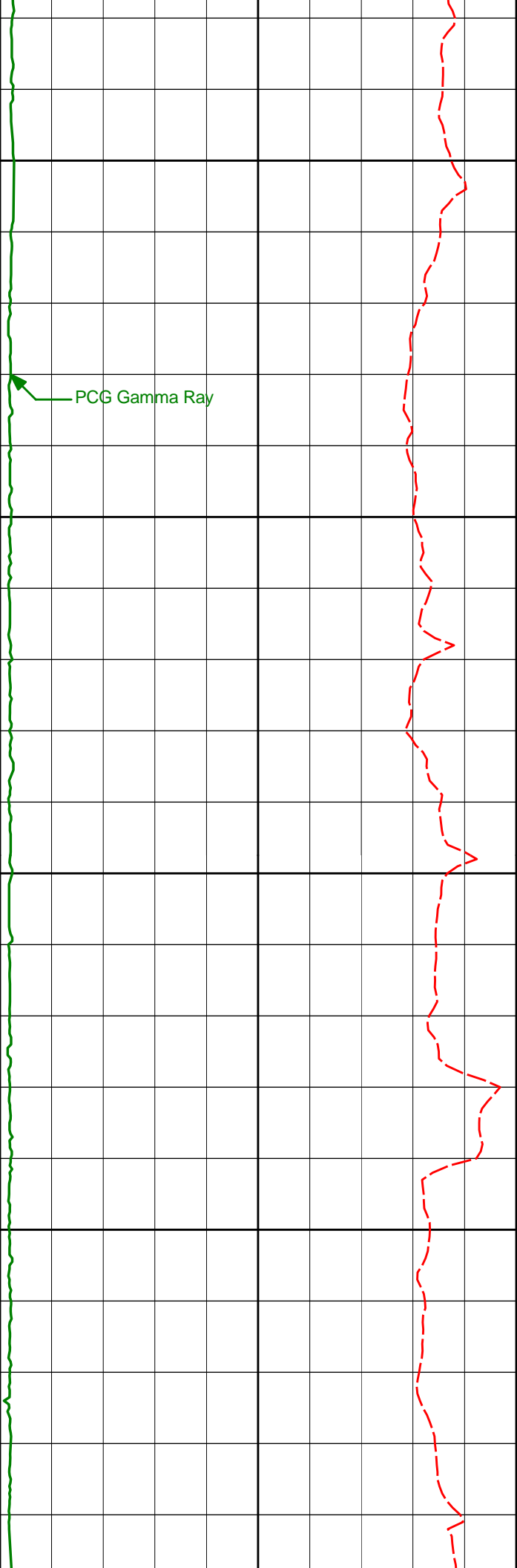
8700

8750

8800

8695' 91.42° 357.66° 4712.28° 4453.9'

8789' 91.48° 356.70° 4709.91° 4547.8'



8850

8883'

91.48°

358.44°

4707.48°

4641.7'

8900

8950

8978'

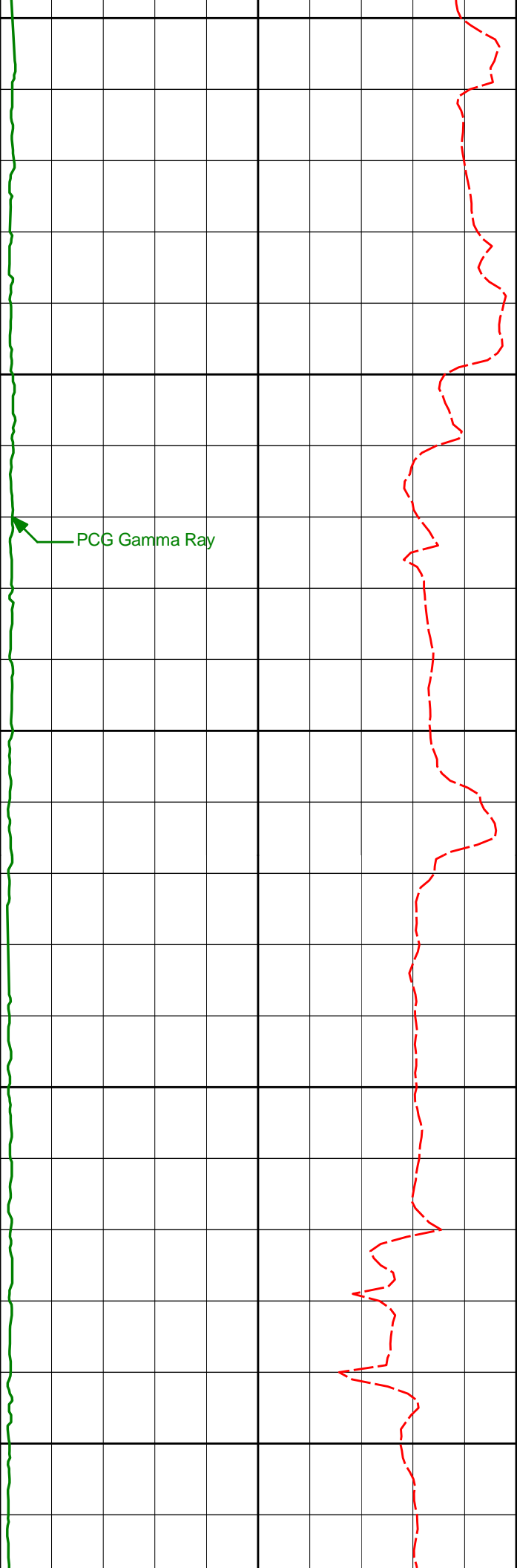
90.31°

357.74°

4706.00°

4736.7'

9000



9050

9072'

90.62°

359.25°

4705.24°

4830.7'

9100

9150

9167'

89.94°

359.50°

4704.78°

4925.7'

9200

9250

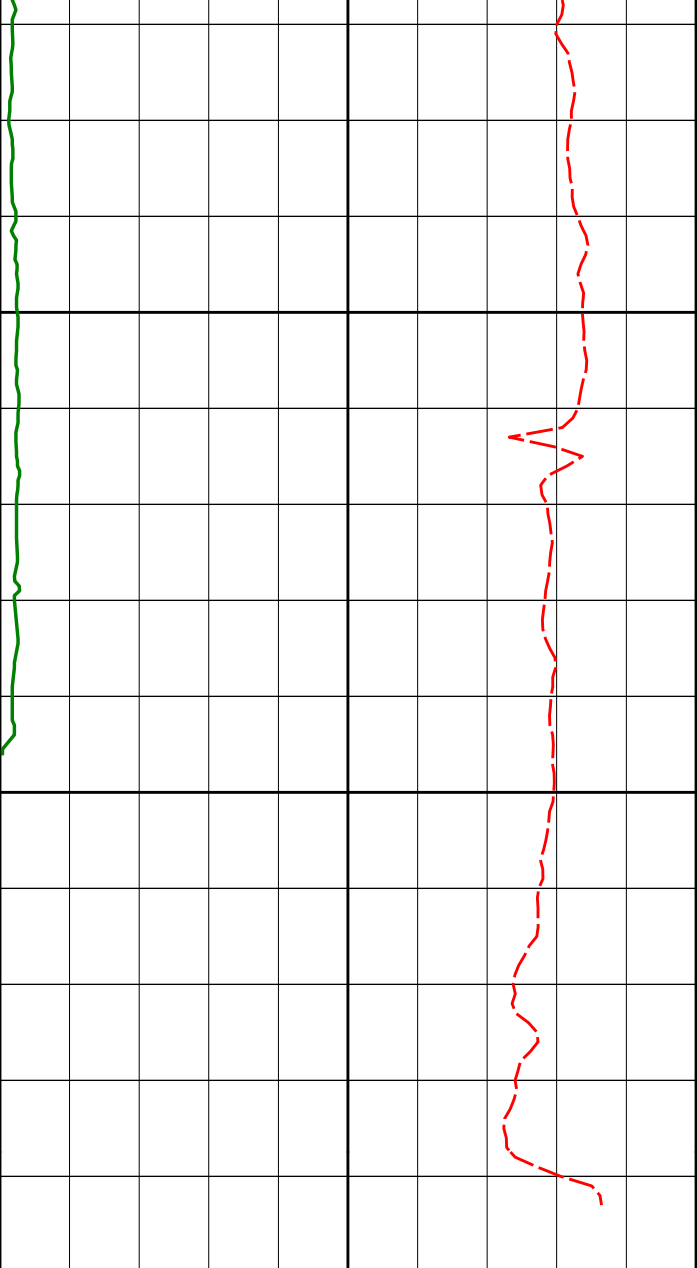
9262'

90.43°

359.93°

4704.48°

5020.7'



9300

9339'

90.43°

0.25°

4703.90°

5097.7'

9350

9392'

90.43°

0.25°

4703.50°

5150.7'

Avg Rate of Penetration
feet per hr

300 0

PCG Gamma Ray
api

0 400

MD
ft
1:240

Survey

Survey

Depth

Inclination

Azimuth

TVD

Vertical Sec