

5 Inch MD-Gamma Ray Log (Scale: 5":100' (10'))

Company: Professional Directional

State: Kansas

Well: Kaup 3407 #16 -2H

County: Harper

Field: Mississippi Lime

Country: USA

Well ID: 14-28695

Job Number: LKS6114914

Location: Sec. 16 T 34S, R7W

Elev KB: 20' + 1,360' = 1,380'

Operator 1: Ronny Golightly

Elev DF: 1,380'

Operator 2: Huy Nguyen

Elev GL: 1,360'

Comment 1: LAT:37° 4' 51.197 N / LONG:98° 5' 22.111 W

Comment 2: Y: 151090.00 / X: 2119767.00

Comment 3: Mud Density (lb/bbl): 8.4 / Funnel Viscosity (sec/qt): 26

Comment 4: Flowline Temp (DegF): 84° / HTHP Filtrate (ml/30 min): 99

Comment 5: Max Temp (DegF): 163° (NAD) Gamma Ray in Reference to Elev KB (Kansas South 1502)

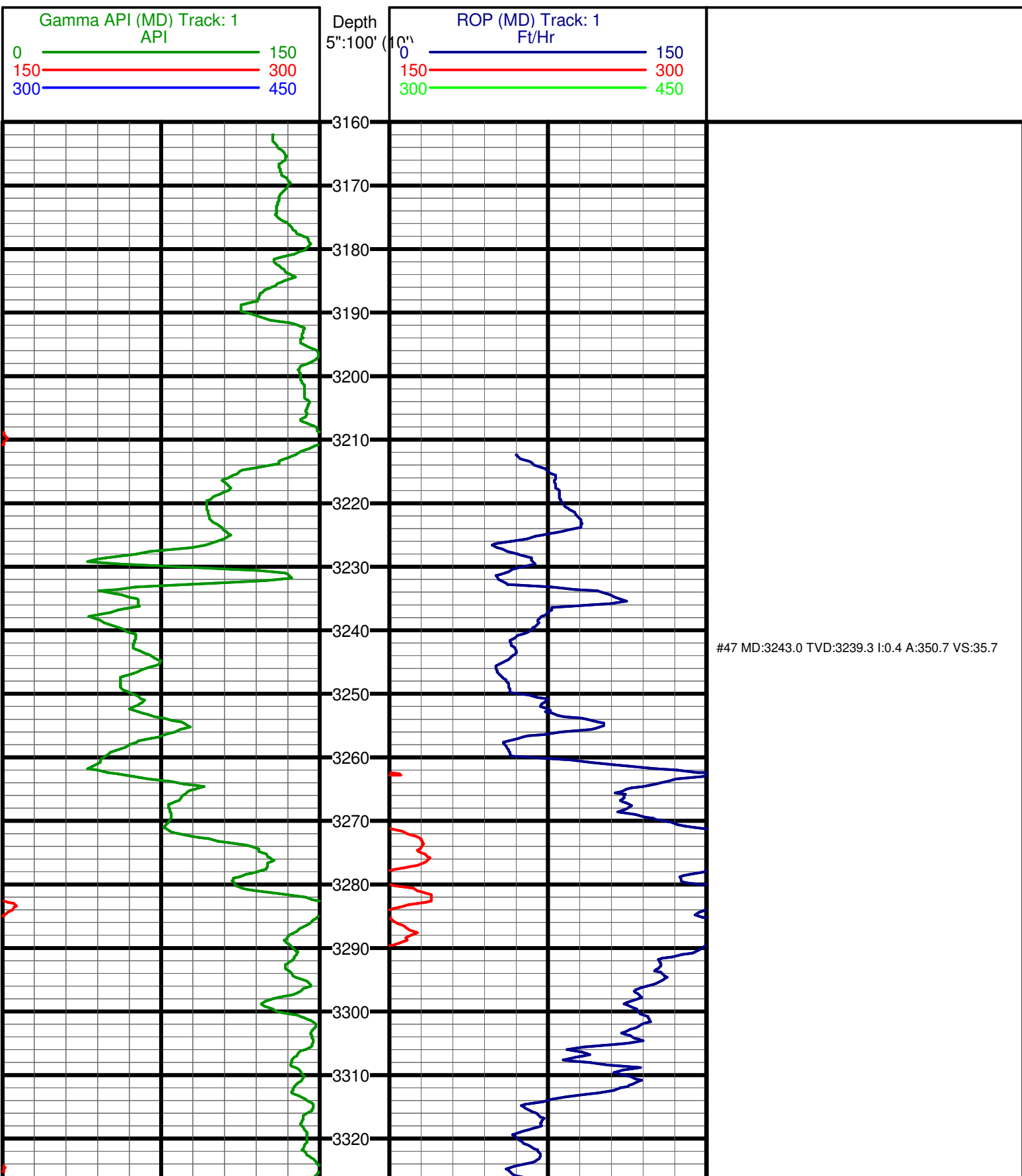
Hole Data			Casing Record		
Size	From	To	Size	From	To
12 1/4	0'	810'	9 5/8	0'	804'
8 3/4	810'	5,268'	7"	804'	5,268'
6 1/8	5,268'	8,787'			

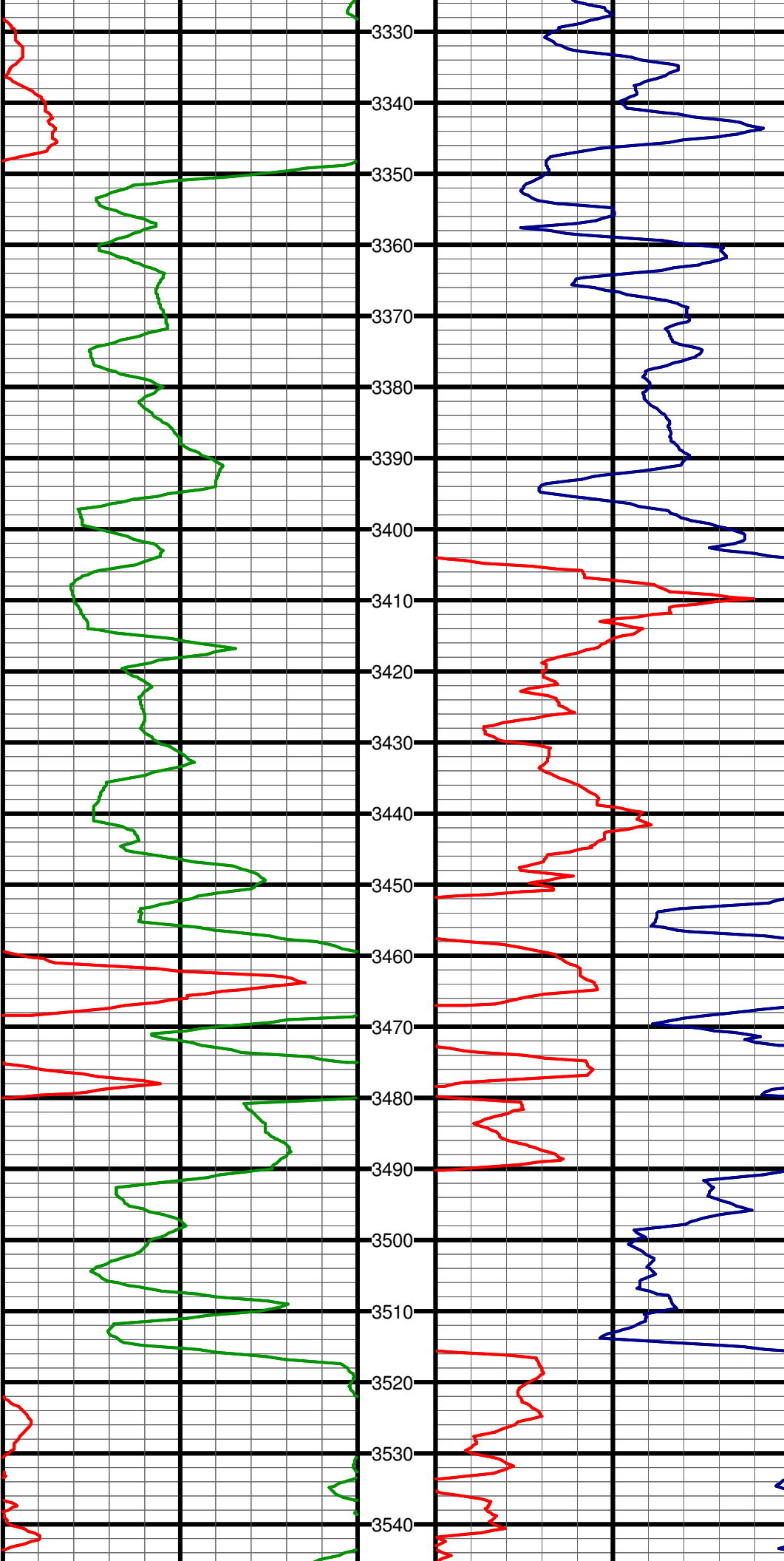
Tool Run Data		Run #1	Run #2	Run #3	Run #4	Run #5
Tool S/N	1061	3007	3007			
Cal Factor	4.85	2.69	2.69			
Gamma Offset	50'	41'	39'			
Start Depth	3,162'	5,227'	7,630'			
Start Date	11/14/2014	11/20/2014	11/24/2014			
Start Time	20:13	13:24	15:03			
End Depth	5,218'	7,630'	8,747'			
End Date	11/18/2014	11/23/2014	11/26/2014			
End Time	06:44	15:27	05:28			

Tool Run Data	Run #6	Run #7	Run #8	Run #9	Run #10
Tool S/N					
Cal Factor					
Offset					
Start Depth					
Start Date					
Start Time					
End Depth					
End Date					
End Time					

Tool Run Data	Run #11	Run #12	Run #13	Run #14	Run #15
Tool S/N					
Cal Factor					
Offset					
Start Depth					
Start Date					
Start Time					
End Depth					

End Date					
End Time					

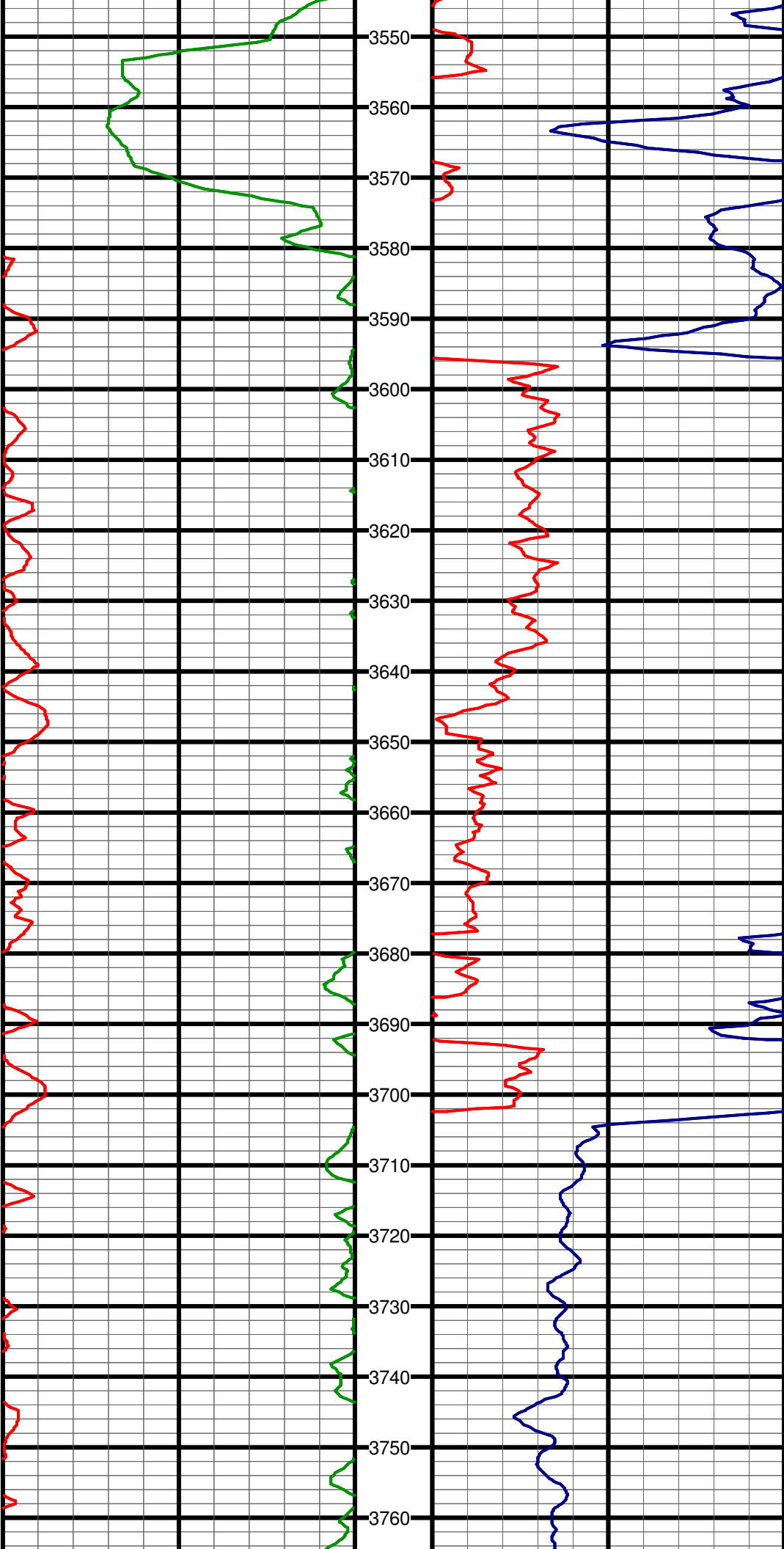




#48 MD:3337.0 TVD:3333.3 I:0.4 A:350.0 VS:36.3

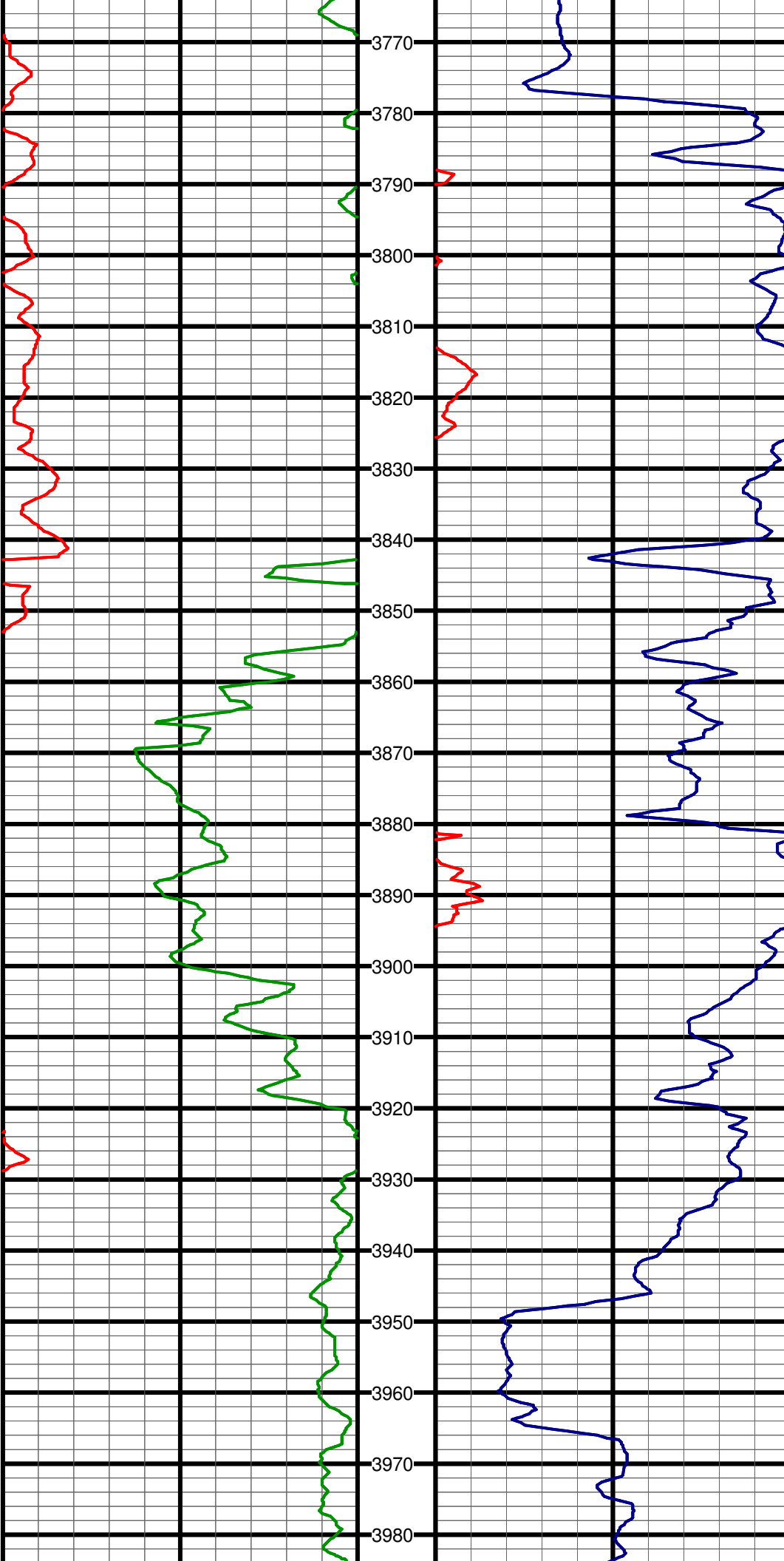
#49 MD:3433.0 TVD:3429.3 I:0.2 A:359.6 VS:36.8

#50 MD:3529.0 TVD:3525.3 I:0.2 A:333.2 VS:37.1



#51 MD:3625.0 TVD:3621.3 I:0.0 A:312.0 VS:37.3

#52 MD:3719.0 TVD:3715.3 I:0.1 A:174.3 VS:37.2



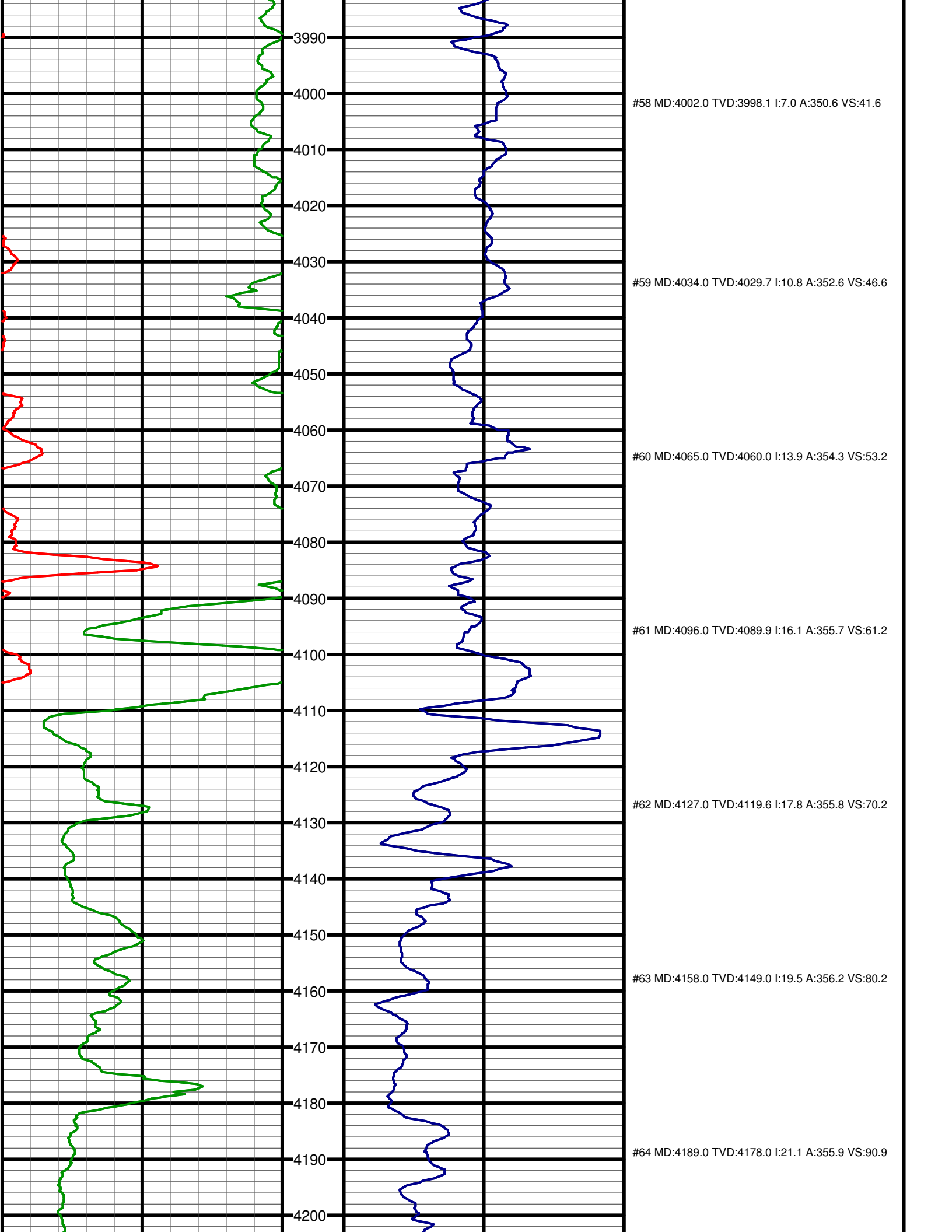
#53 MD:3813.0 TVD:3809.3 I:0.2 A:297.5 VS:37.2

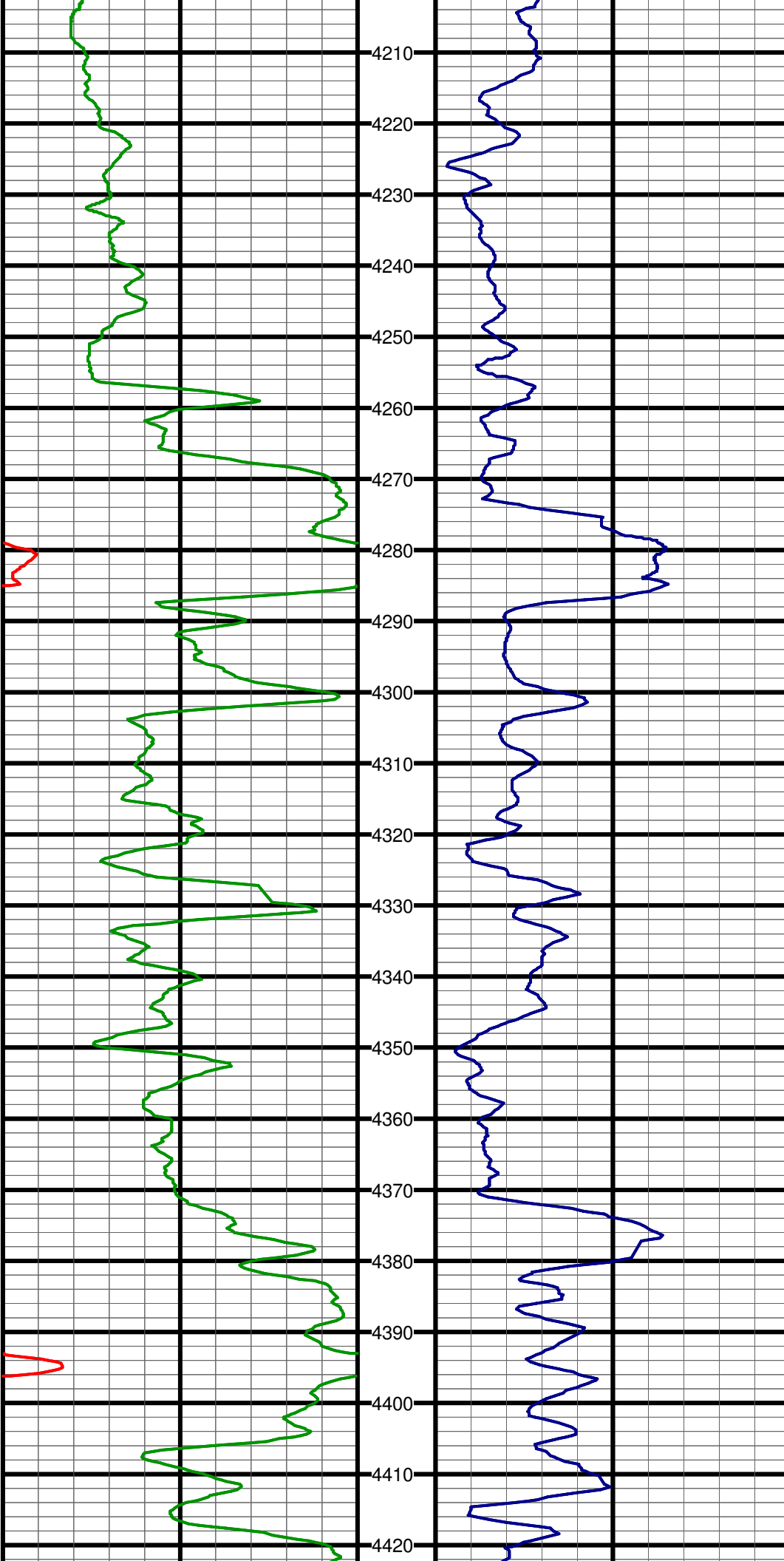
#54 MD:3882.0 TVD:3878.3 I:0.1 A:298.1 VS:37.3

#55 MD:3907.0 TVD:3903.3 I:0.0 A:231.7 VS:37.3

#56 MD:3939.0 TVD:3935.3 I:0.8 A:345.0 VS:37.5

#57 MD:3970.0 TVD:3966.2 I:3.5 A:351.5 VS:38.7





4210

4220

4230

4240

4250

4260

4270

4280

4290

4300

4310

4320

4330

4340

4350

4360

4370

4380

4390

4400

4410

4420

#65 MD:4221.0 TVD:4207.6 I:24.1 A:357.1 VS:103.2

#66 MD:4252.0 TVD:4235.5 I:27.3 A:356.9 VS:116.6

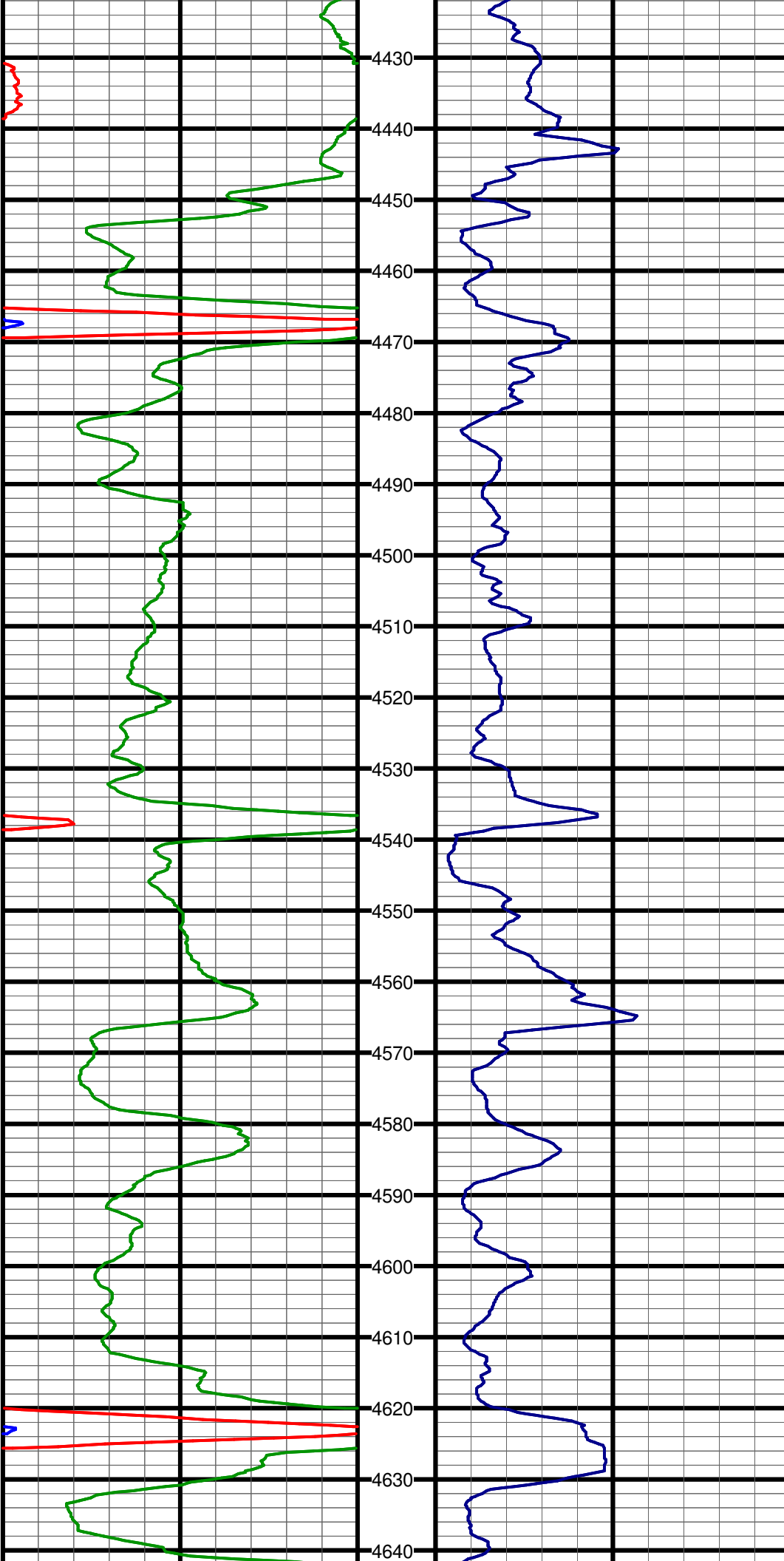
#67 MD:4284.0 TVD:4263.6 I:29.6 A:356.1 VS:131.9

#68 MD:4316.0 TVD:4291.1 I:32.0 A:355.1 VS:148.3

#69 MD:4348.0 TVD:4318.0 I:33.7 A:354.2 VS:165.6

#70 MD:4380.0 TVD:4344.3 I:35.7 A:354.4 VS:183.8

#71 MD:4411.0 TVD:4369.3 I:37.0 A:355.2 VS:202.2



#72 MD:4442.0 TVD:4393.8 I:38.7 A:355.7 VS:221.2

#73 MD:4473.0 TVD:4417.6 I:41.0 A:356.2 VS:241.1

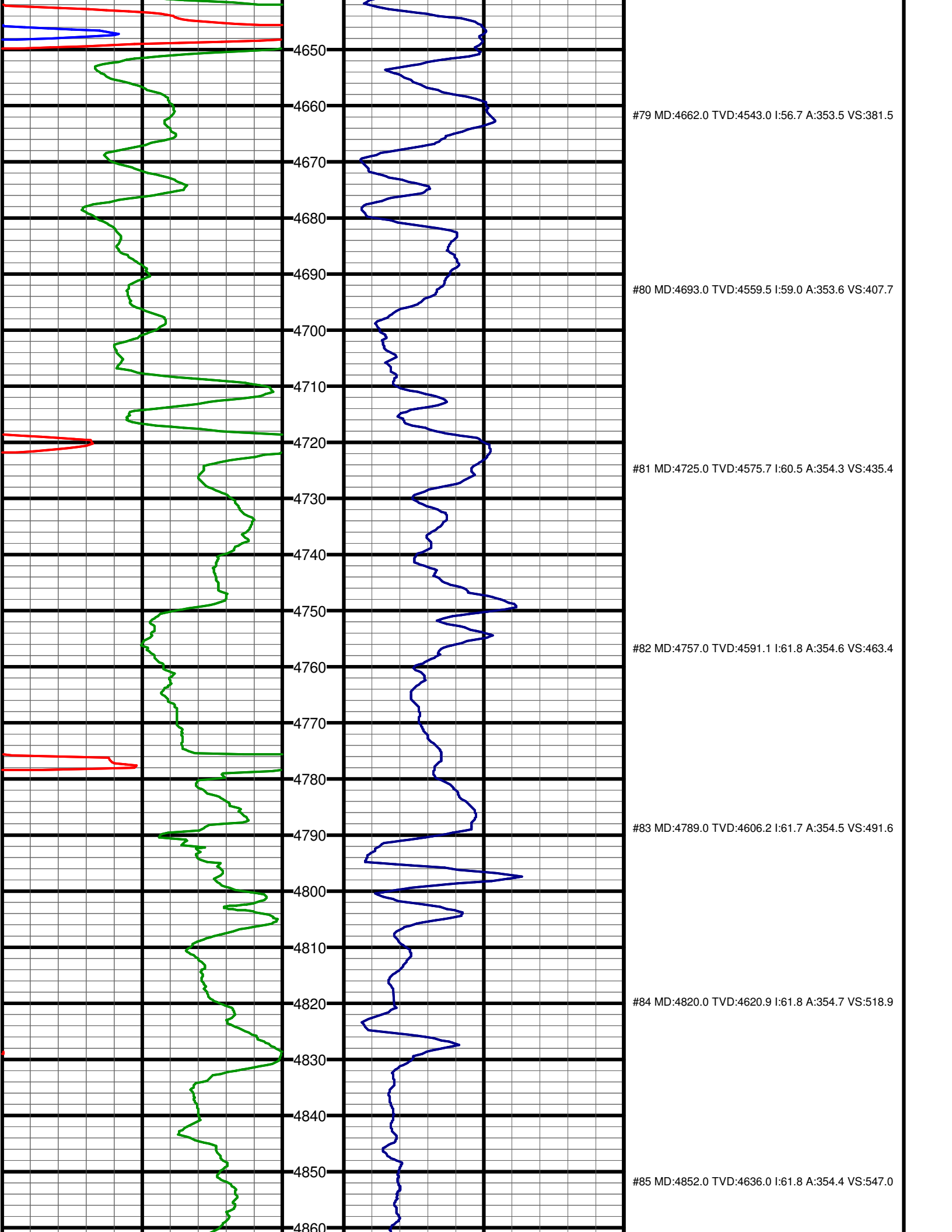
#74 MD:4505.0 TVD:4441.3 I:43.2 A:357.4 VS:262.5

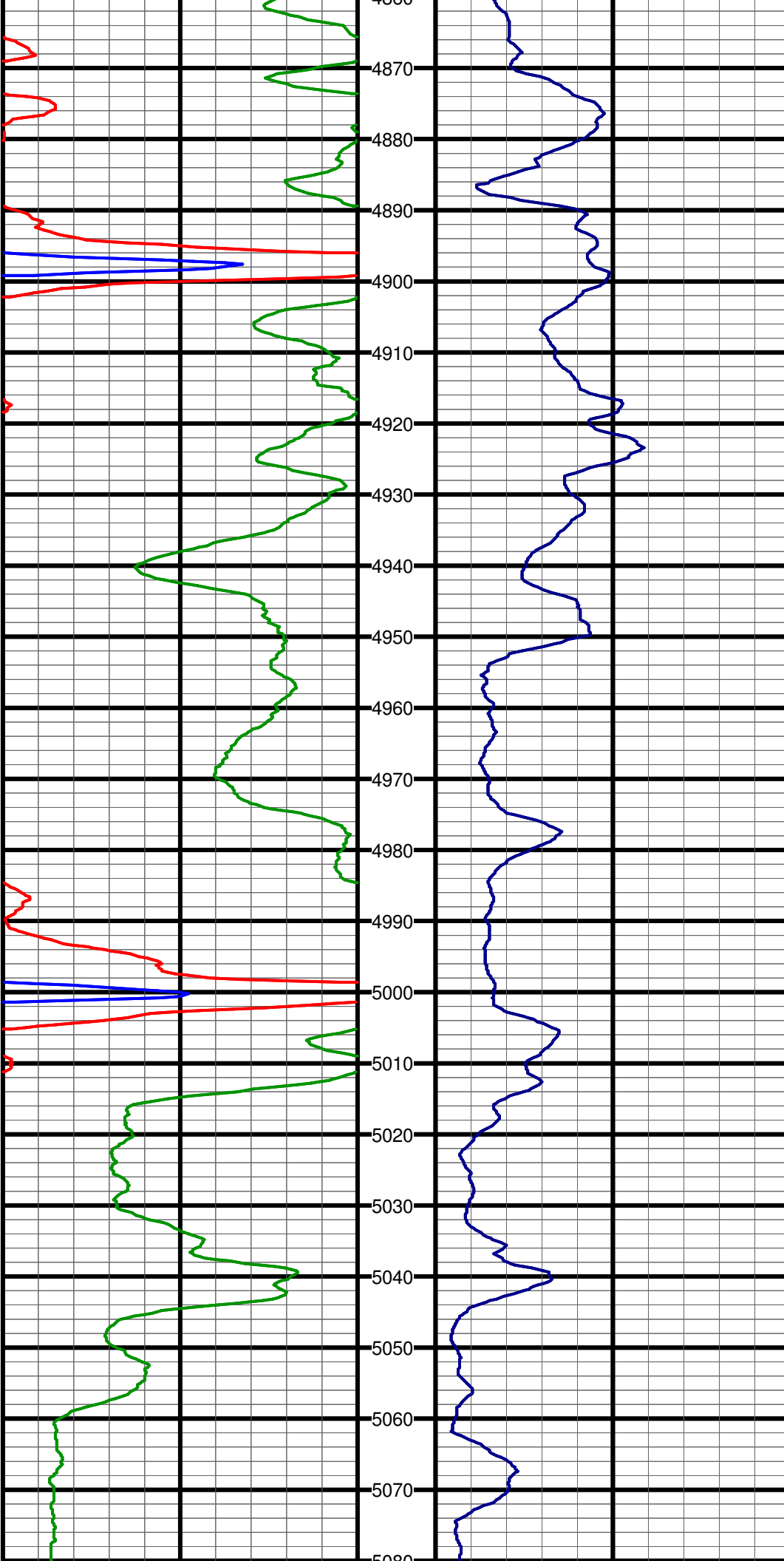
#75 MD:4537.0 TVD:4464.2 I:45.2 A:357.0 VS:284.8

#76 MD:4568.0 TVD:4485.7 I:47.2 A:354.7 VS:307.2

#77 MD:4599.0 TVD:4506.0 I:51.0 A:353.9 VS:330.6

#78 MD:4631.0 TVD:4525.4 I:54.1 A:353.4 VS:356.0





#86 MD:4886.0 TVD:4652.2 I:61.5 A:354.7 VS:577.0

#87 MD:4914.0 TVD:4665.6 I:61.4 A:354.6 VS:601.6

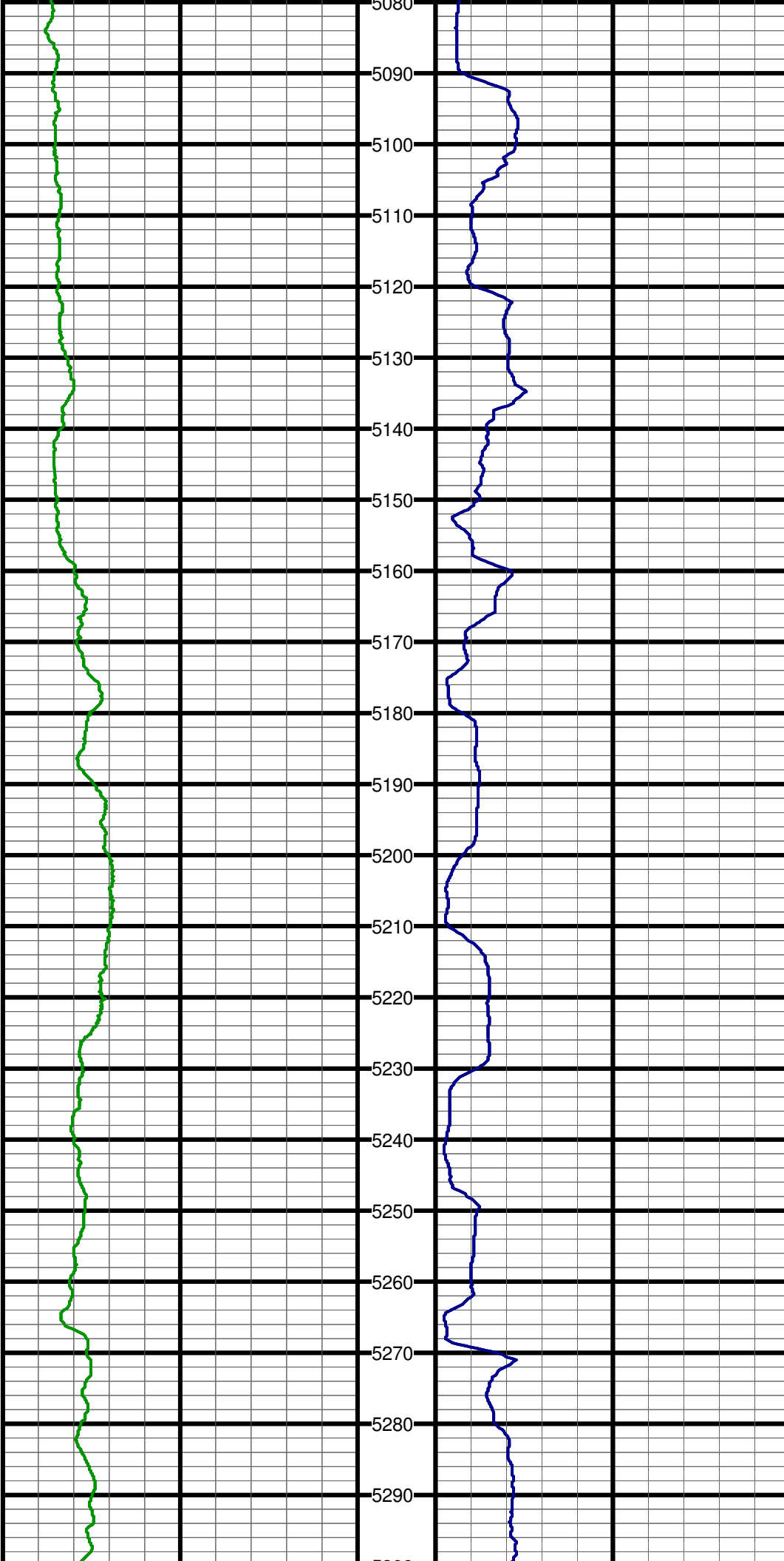
#88 MD:4949.0 TVD:4682.1 I:62.4 A:354.6 VS:632.4

#89 MD:4977.0 TVD:4694.5 I:65.0 A:354.7 VS:657.5

#90 MD:5009.0 TVD:4707.2 I:67.9 A:354.4 VS:686.8

#91 MD:5040.0 TVD:4718.2 I:70.9 A:355.1 VS:715.9

#92 MD:5071.0 TVD:4727.8 I:73.0 A:356.3 VS:745.3



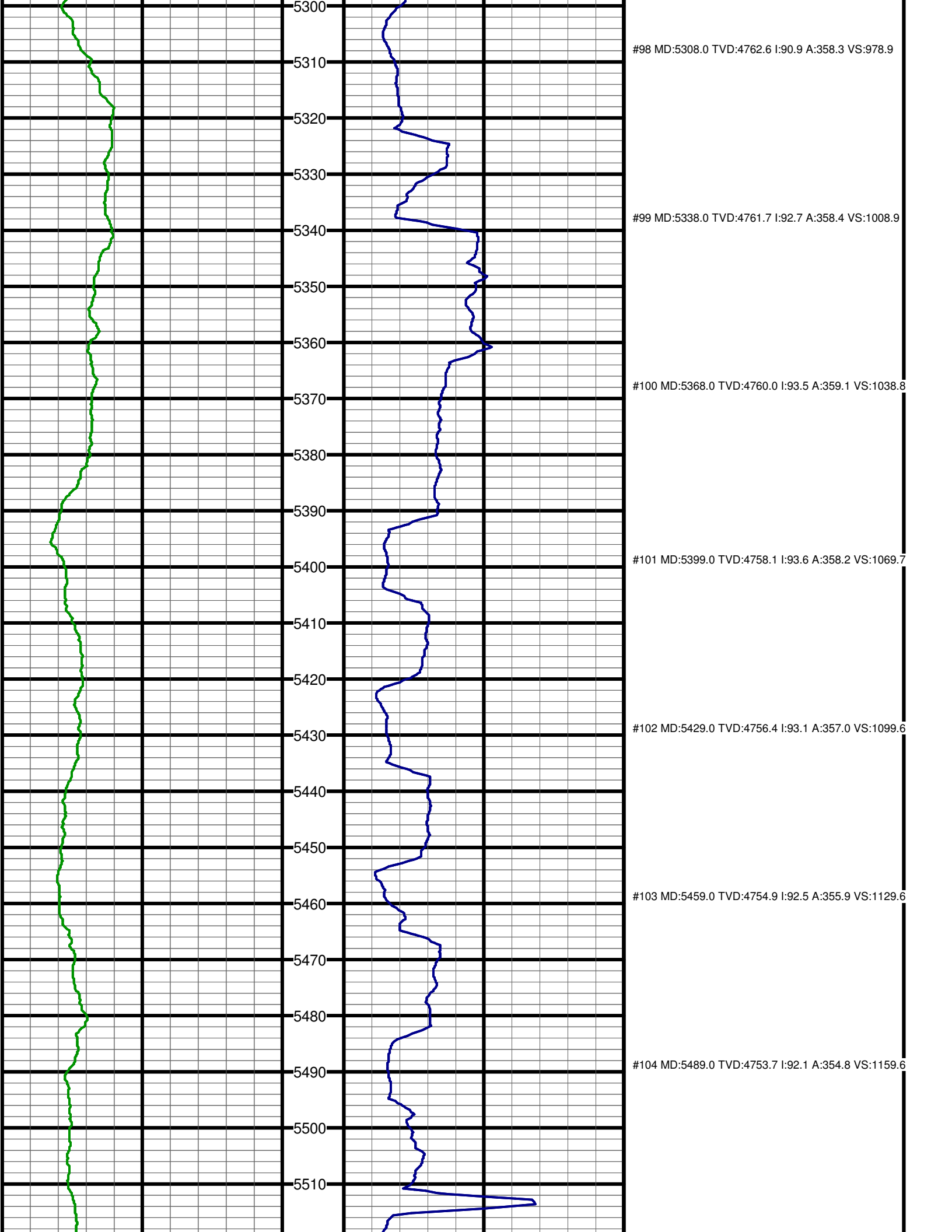
#93 MD:5102.0 TVD:4736.2 I:75.5 A:356.3 VS:775.2

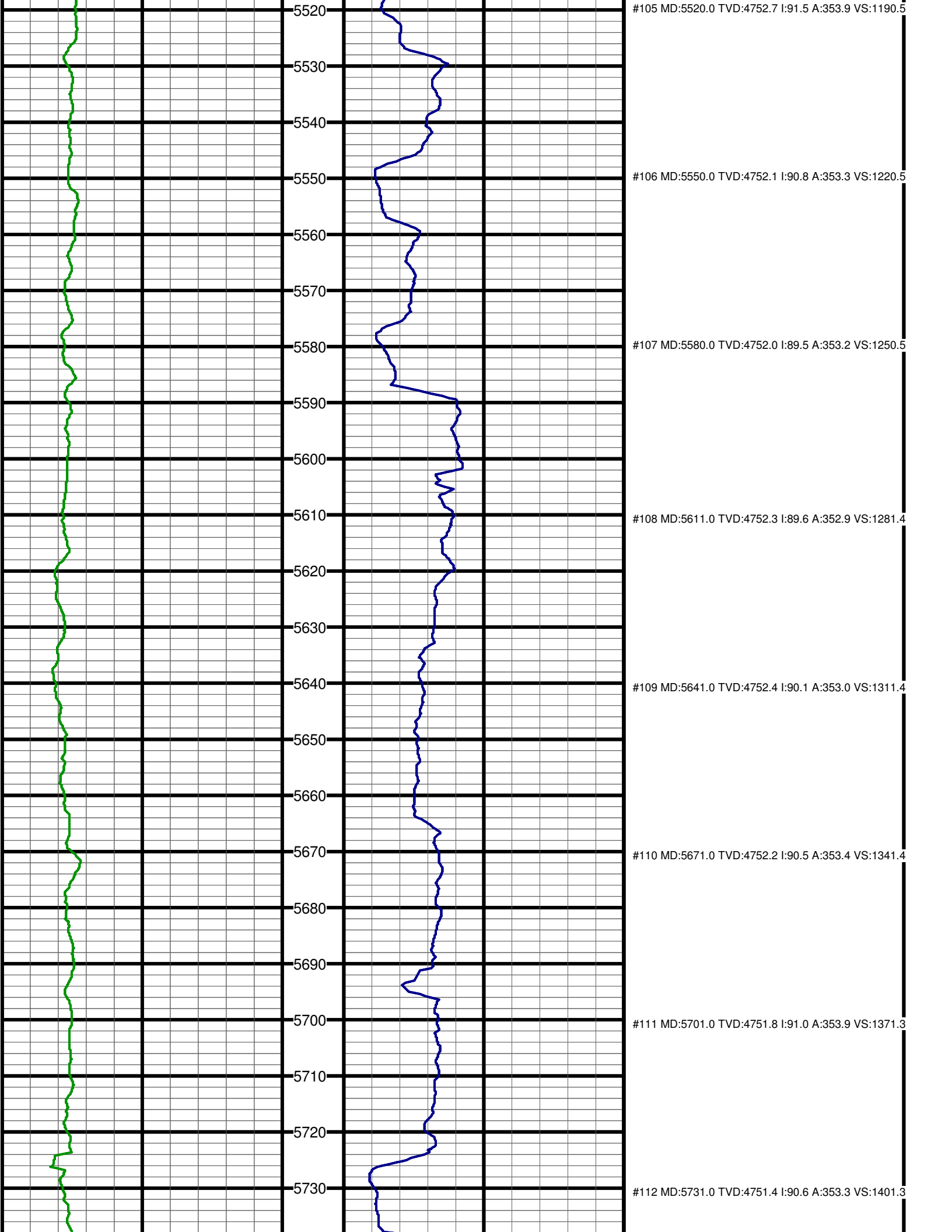
#94 MD:5133.0 TVD:4743.3 I:77.8 A:356.3 VS:805.3

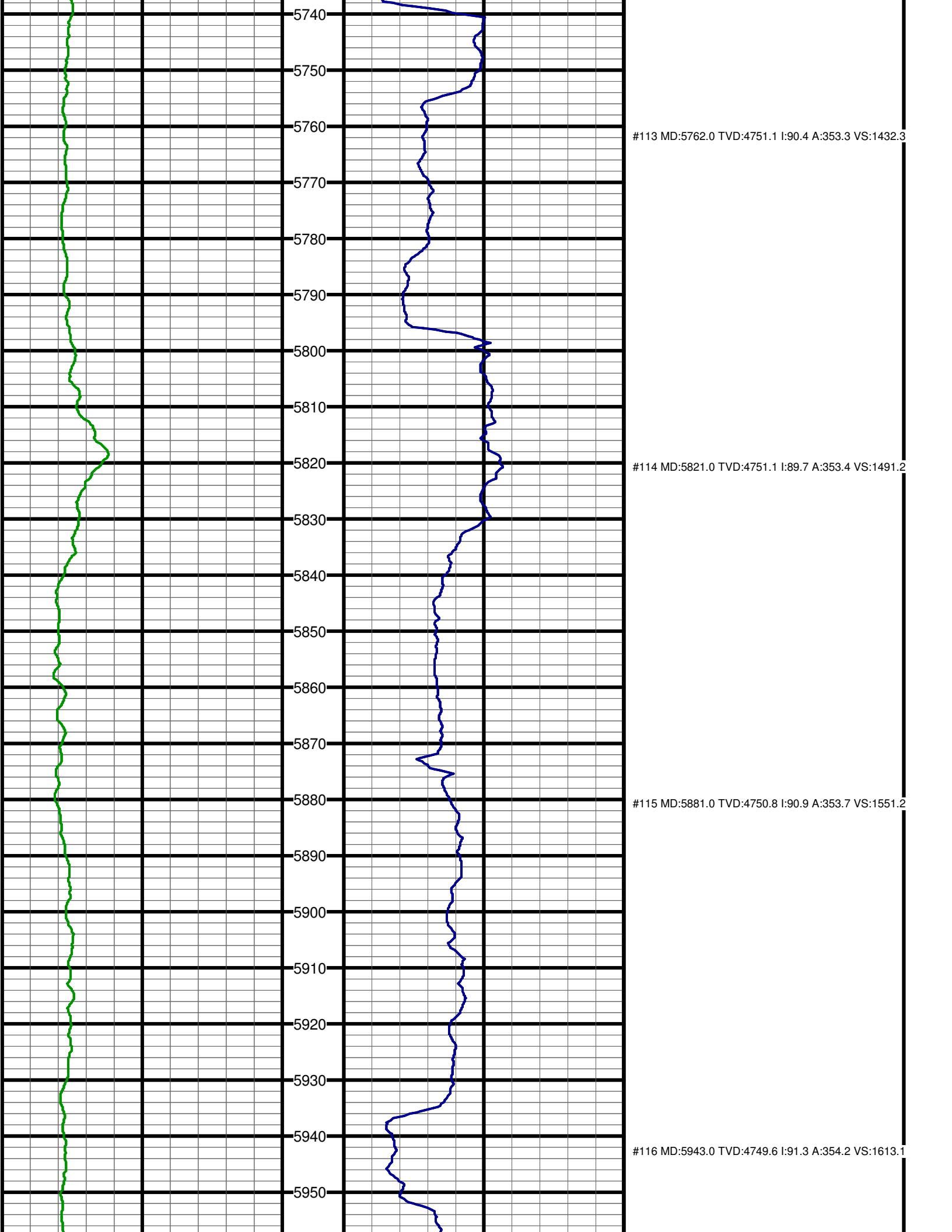
#95 MD:5165.0 TVD:4749.3 I:80.8 A:356.3 VS:836.8

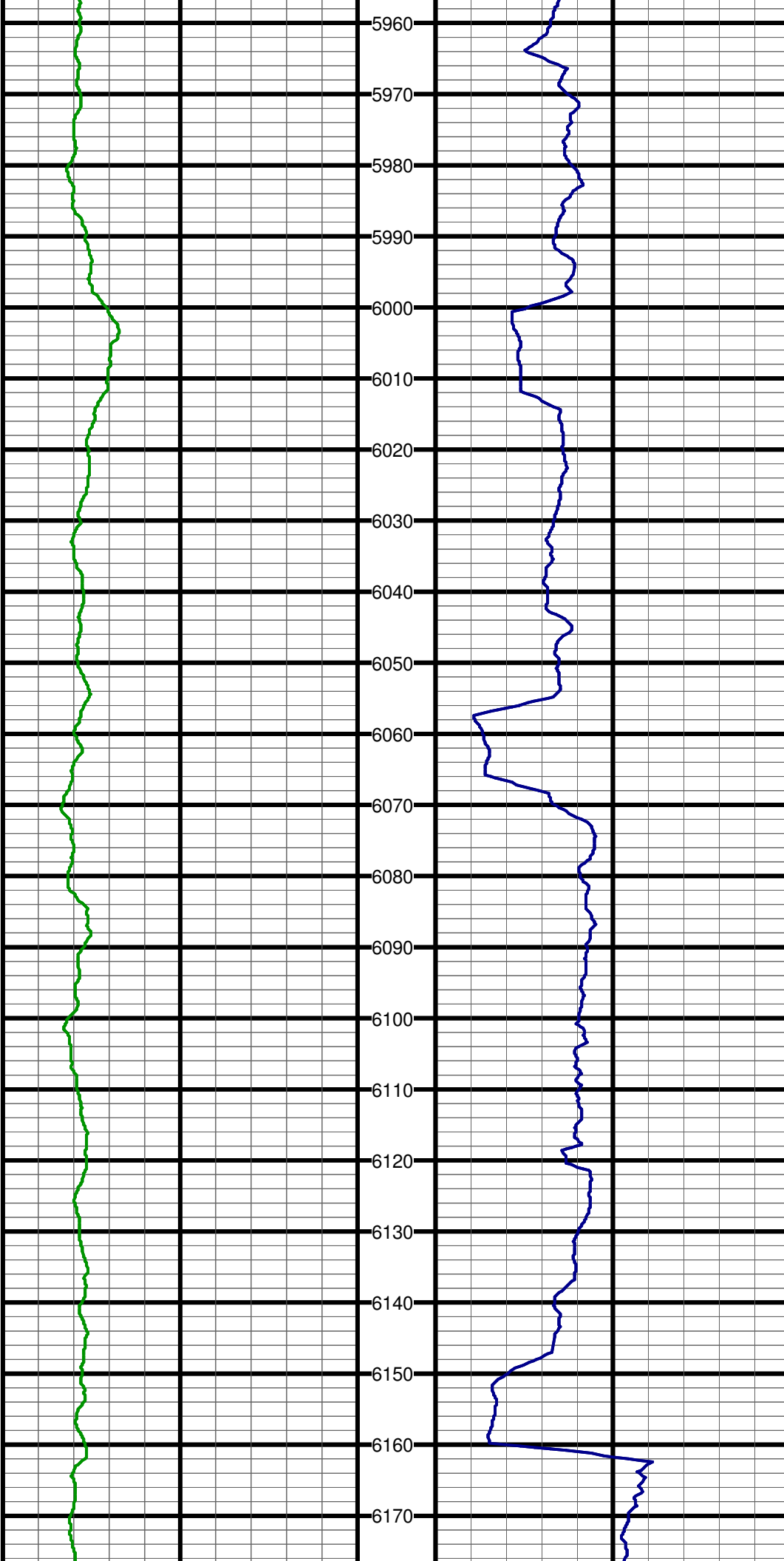
#96 MD:5197.0 TVD:4754.1 I:82.0 A:356.9 VS:868.4

#97 MD:5276.0 TVD:4761.9 I:86.6 A:357.8 VS:946.9









5960

5970

5980

5990

6000

6010

6020

6030

6040

6050

6060

6070

6080

6090

6100

6110

6120

6130

6140

6150

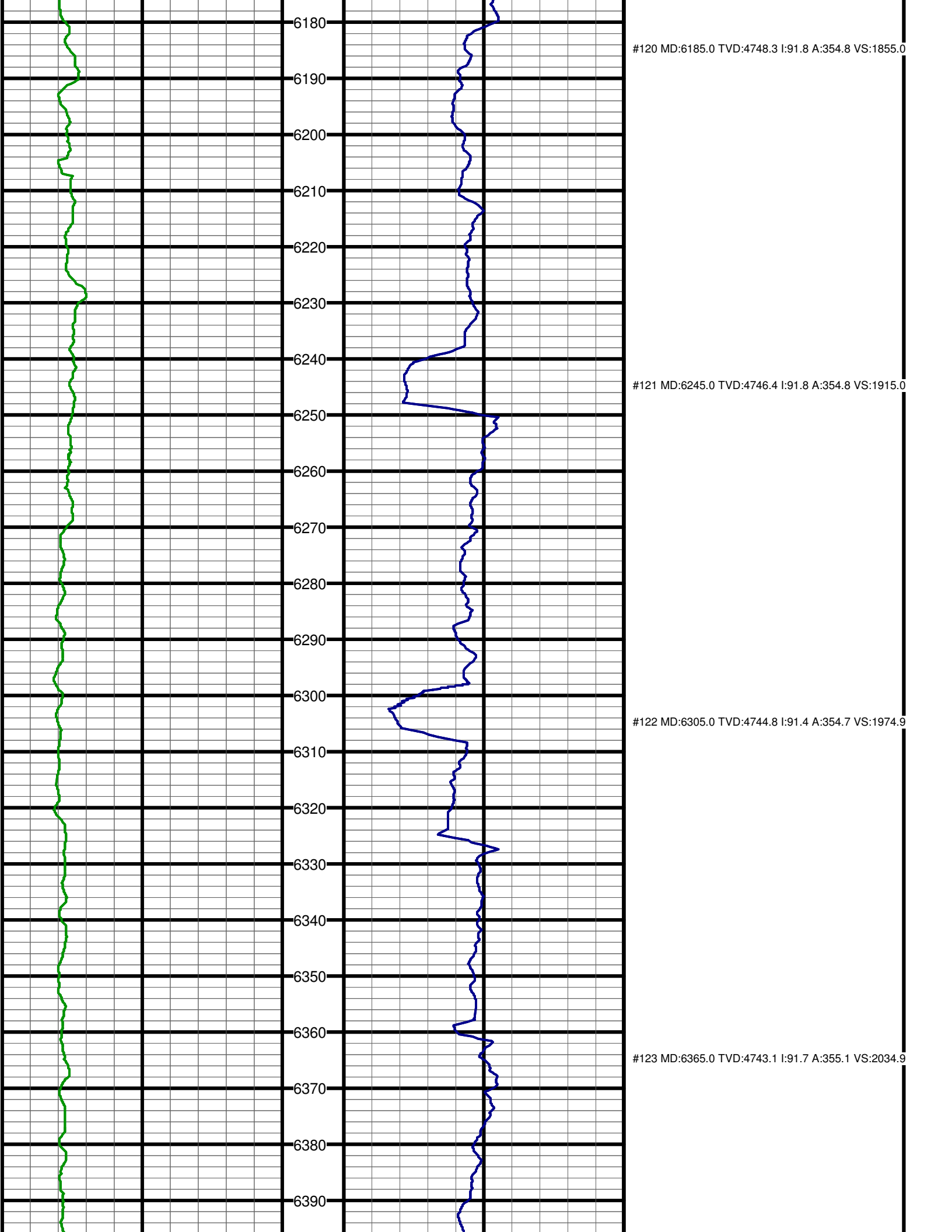
6160

6170

#117 MD:6004.0 TVD:4748.7 I:90.4 A:354.3 VS:1674.1

#118 MD:6064.0 TVD:4748.7 I:89.5 A:353.8 VS:1734.1

#119 MD:6124.0 TVD:4749.1 I:89.7 A:354.2 VS:1794.0



6180

#120 MD:6185.0 TVD:4748.3 I:91.8 A:354.8 VS:1855.0

6190

6200

6210

6220

6230

6240

#121 MD:6245.0 TVD:4746.4 I:91.8 A:354.8 VS:1915.0

6250

6260

6270

6280

6290

6300

#122 MD:6305.0 TVD:4744.8 I:91.4 A:354.7 VS:1974.9

6310

6320

6330

6340

6350

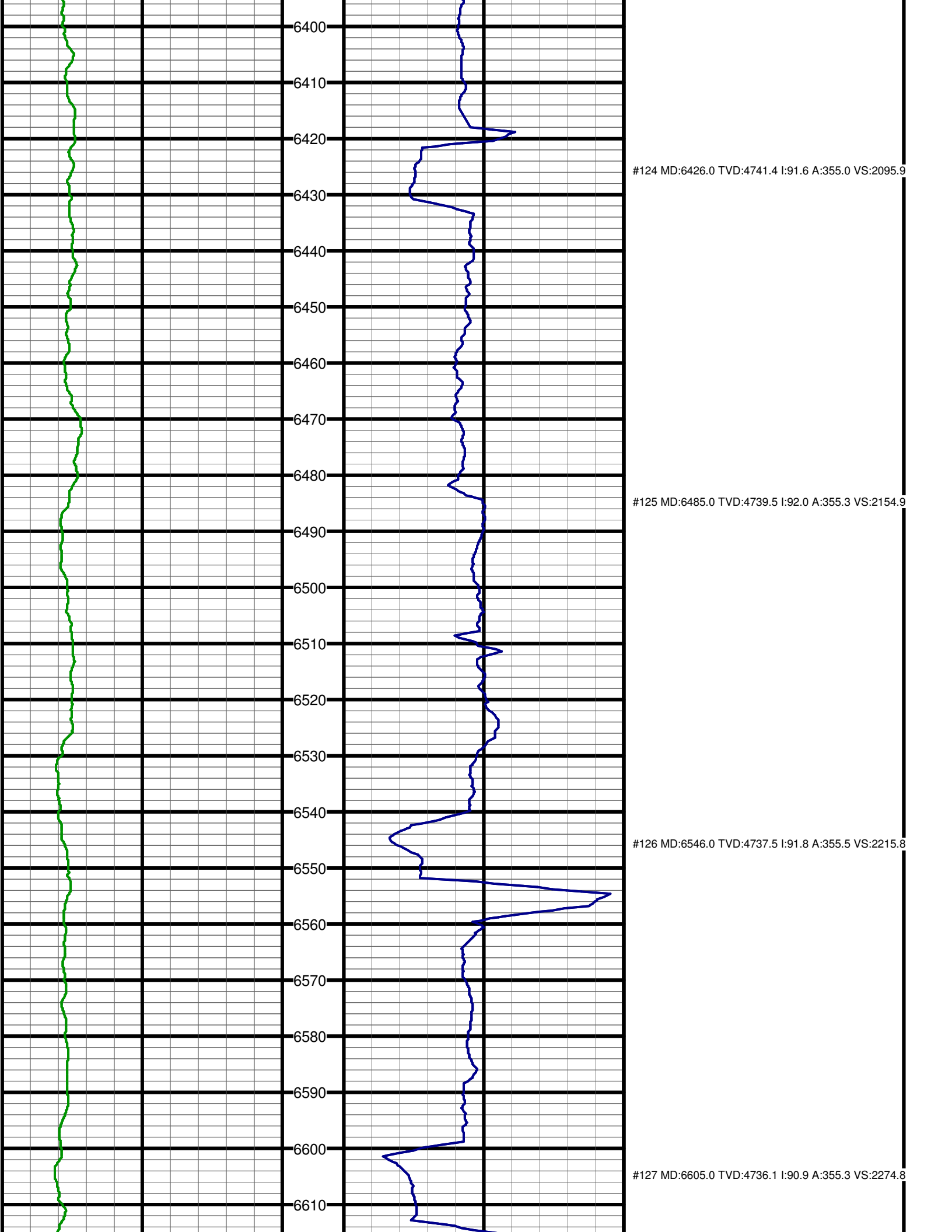
6360

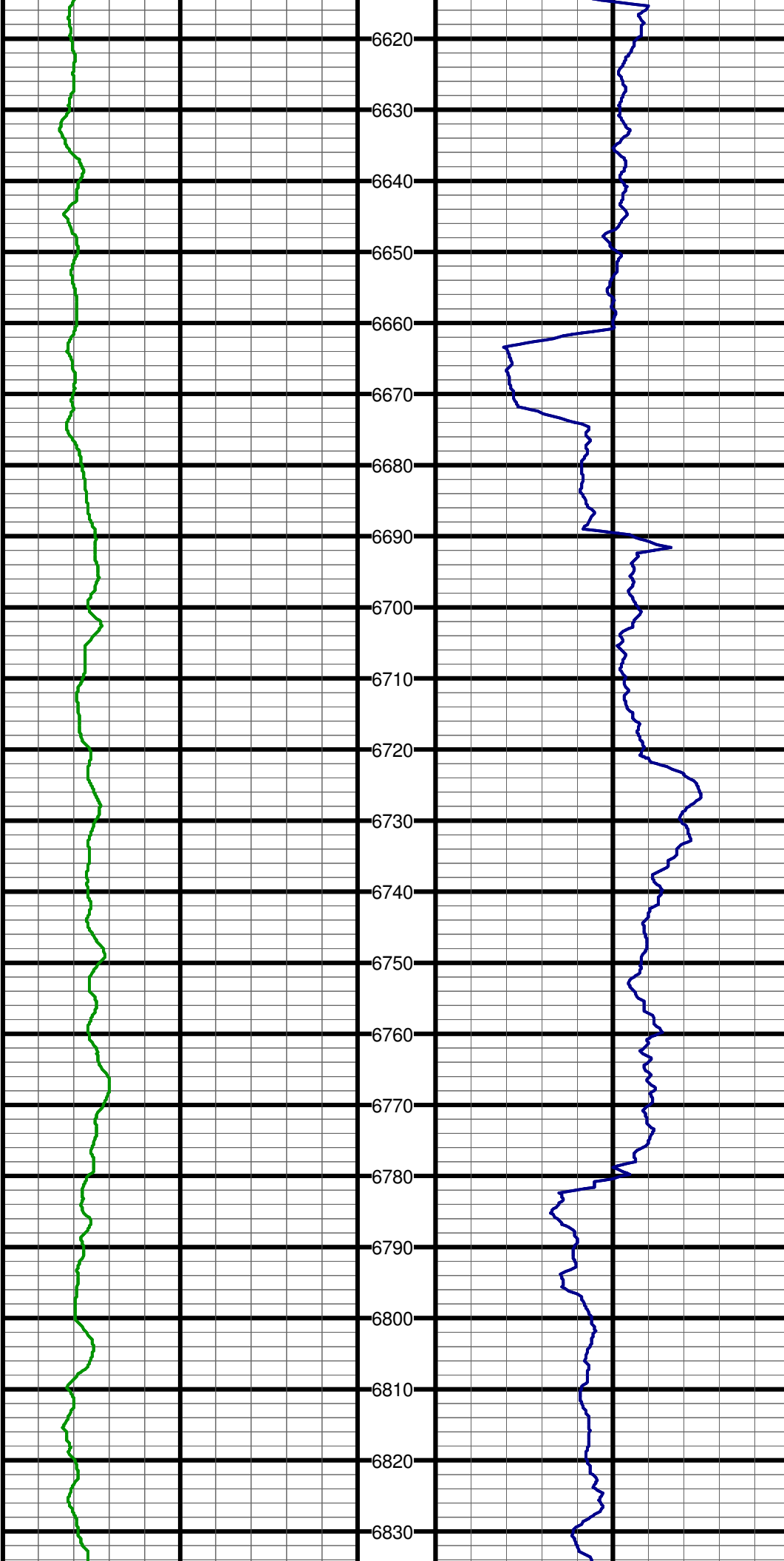
#123 MD:6365.0 TVD:4743.1 I:91.7 A:355.1 VS:2034.9

6370

6380

6390

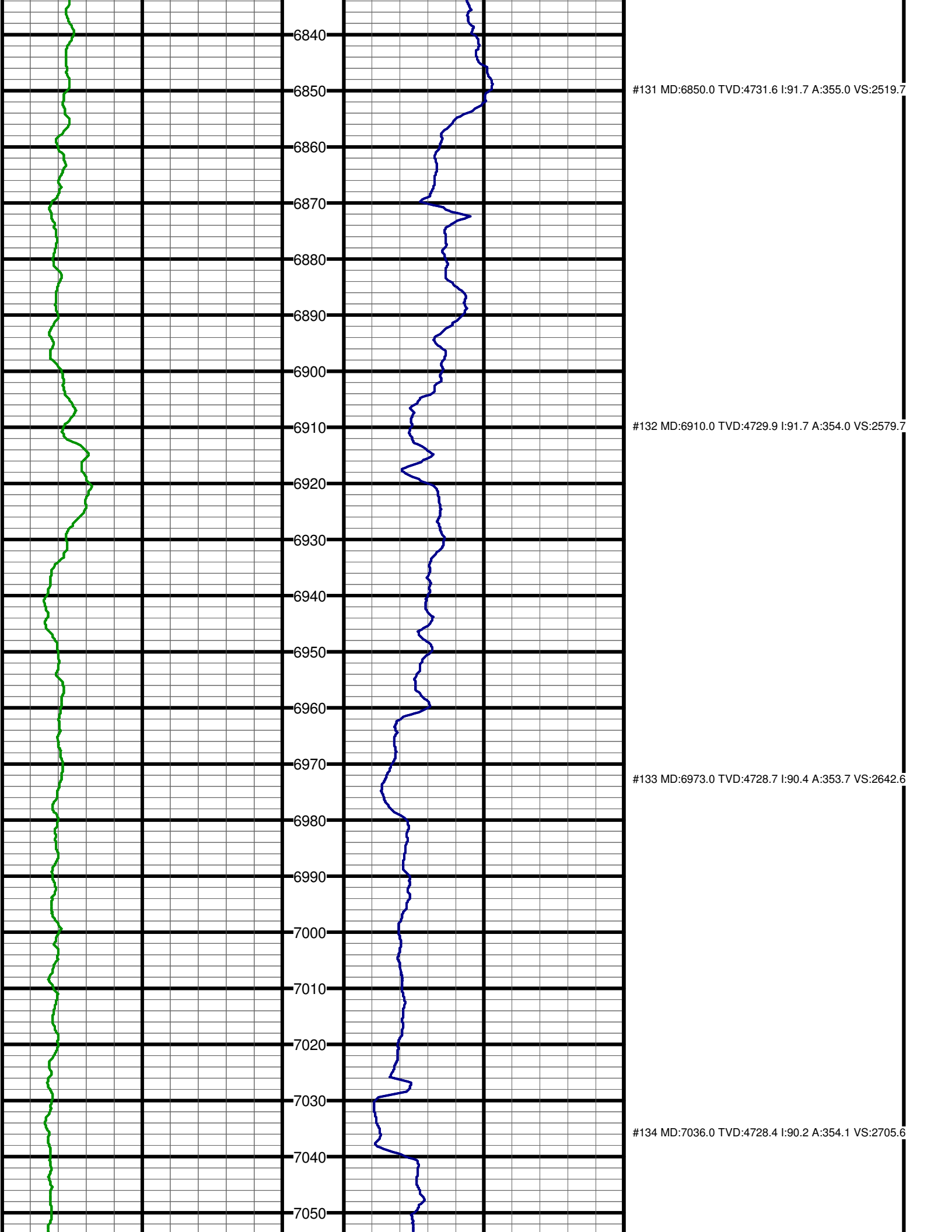


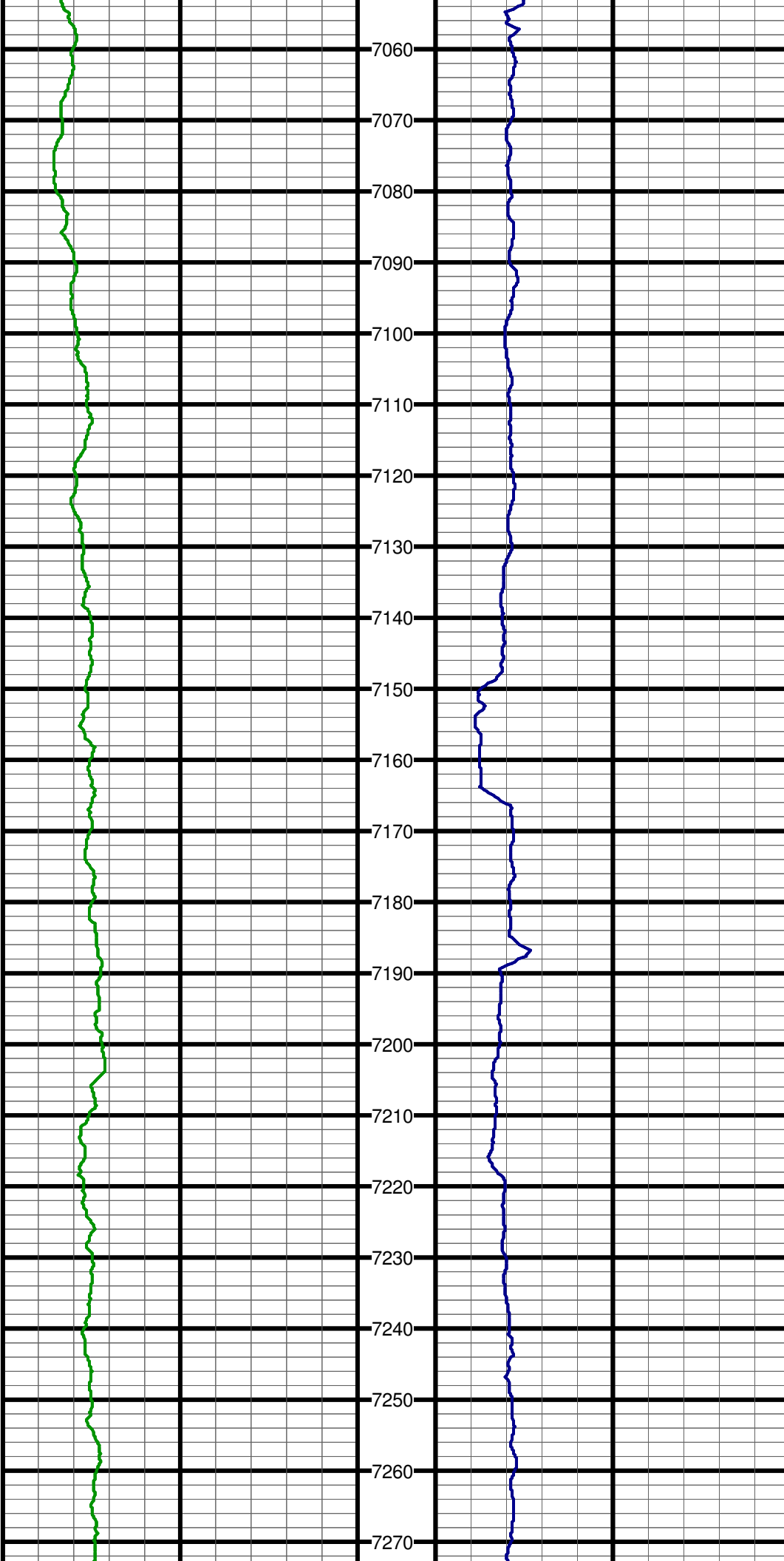


#128 MD:6666.0 TVD:4735.3 I:90.6 A:354.5 VS:2335.8

#129 MD:6728.0 TVD:4734.5 I:91.0 A:354.9 VS:2397.8

#130 MD:6789.0 TVD:4733.2 I:91.3 A:355.1 VS:2458.8



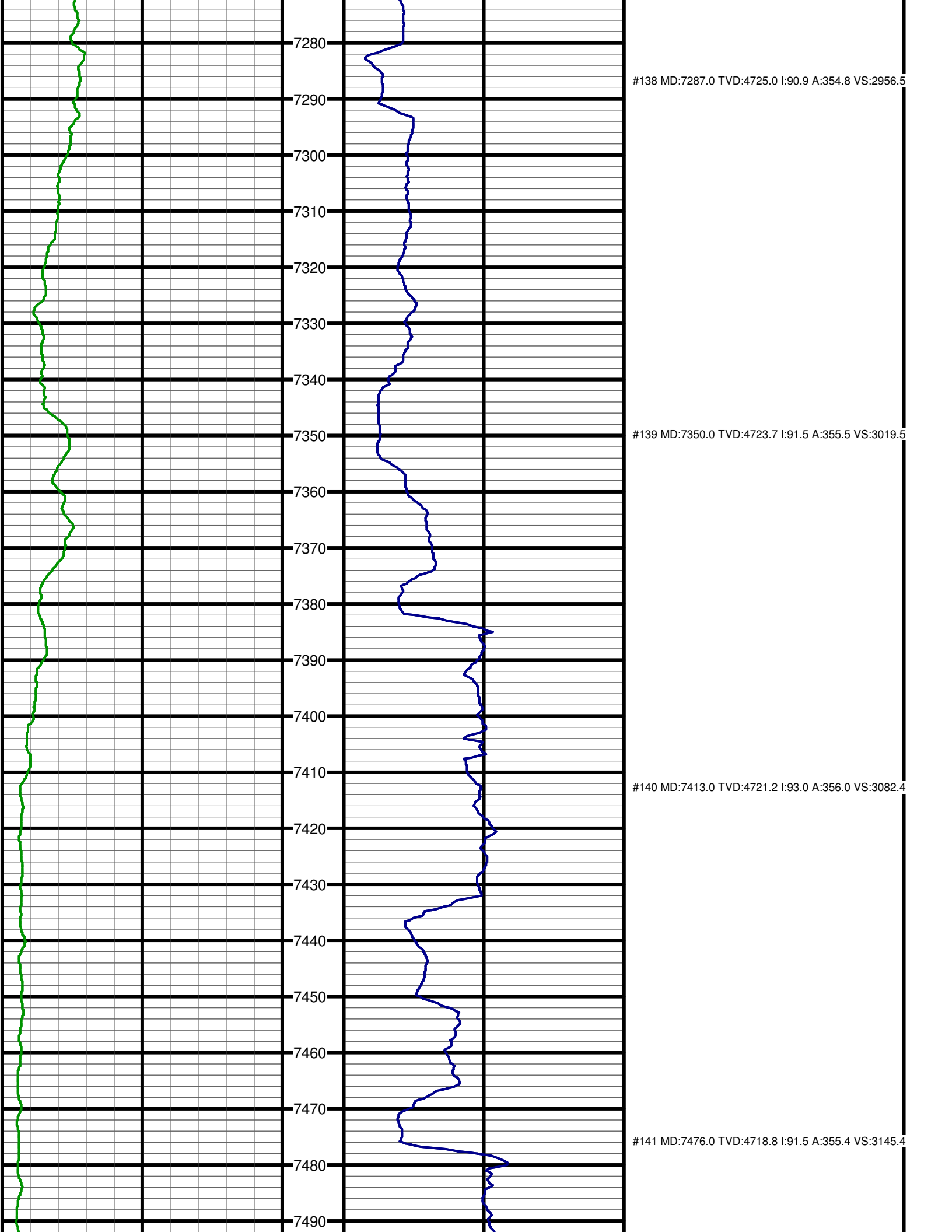


7060
7070
7080
7090
7100
7110
7120
7130
7140
7150
7160
7170
7180
7190
7200
7210
7220
7230
7240
7250
7260
7270

#135 MD:7099.0 TVD:4728.1 I:90.3 A:354.2 VS:2768.6

#136 MD:7161.0 TVD:4727.3 I:91.1 A:354.1 VS:2830.5

#137 MD:7224.0 TVD:4726.1 I:91.1 A:354.8 VS:2893.5



7280

#138 MD:7287.0 TVD:4725.0 I:90.9 A:354.8 VS:2956.5

7290

7300

7310

7320

7330

7340

7350

#139 MD:7350.0 TVD:4723.7 I:91.5 A:355.5 VS:3019.5

7360

7370

7380

7390

7400

7410

#140 MD:7413.0 TVD:4721.2 I:93.0 A:356.0 VS:3082.4

7420

7430

7440

7450

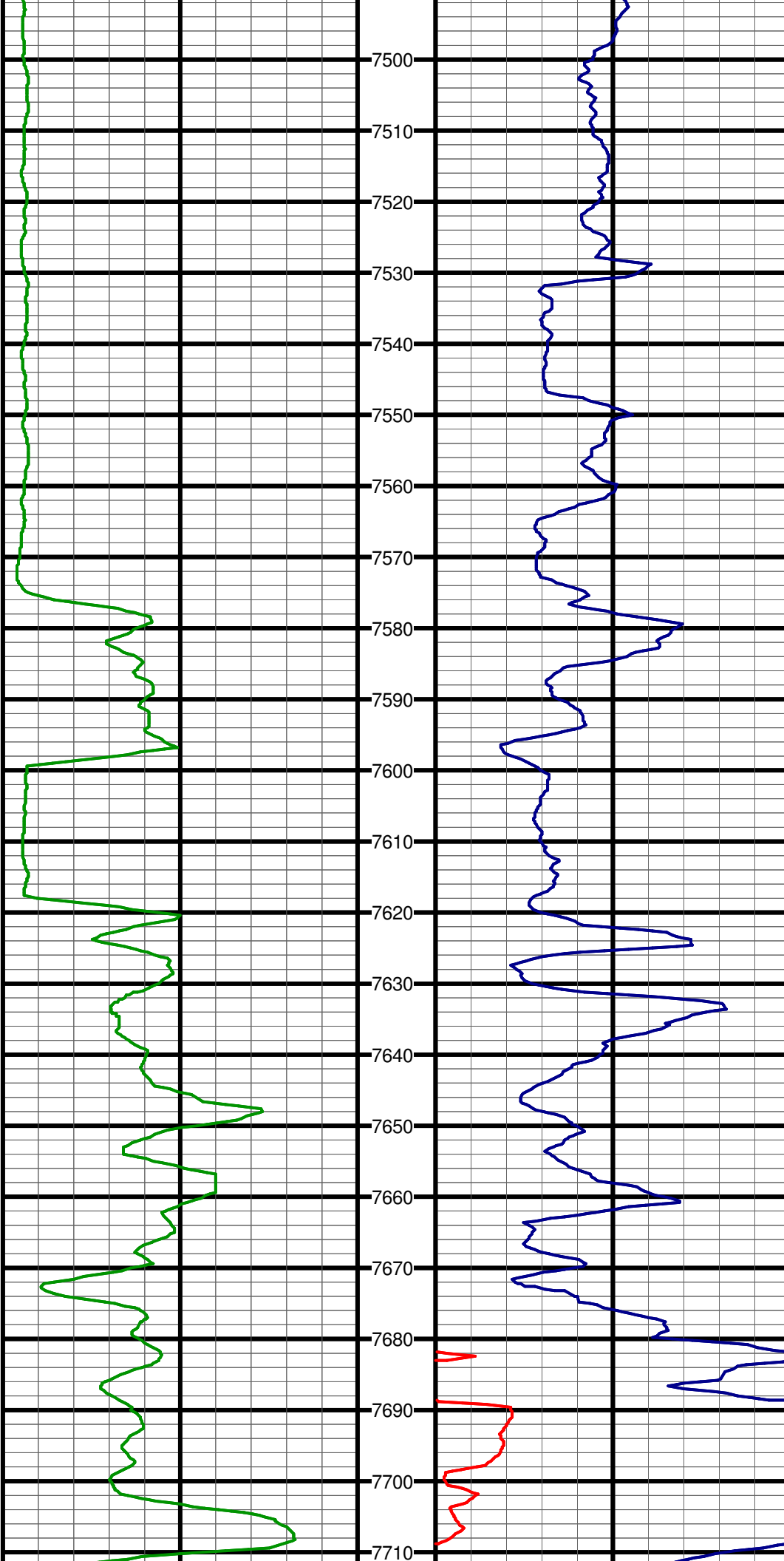
7460

7470

#141 MD:7476.0 TVD:4718.8 I:91.5 A:355.4 VS:3145.4

7480

7490

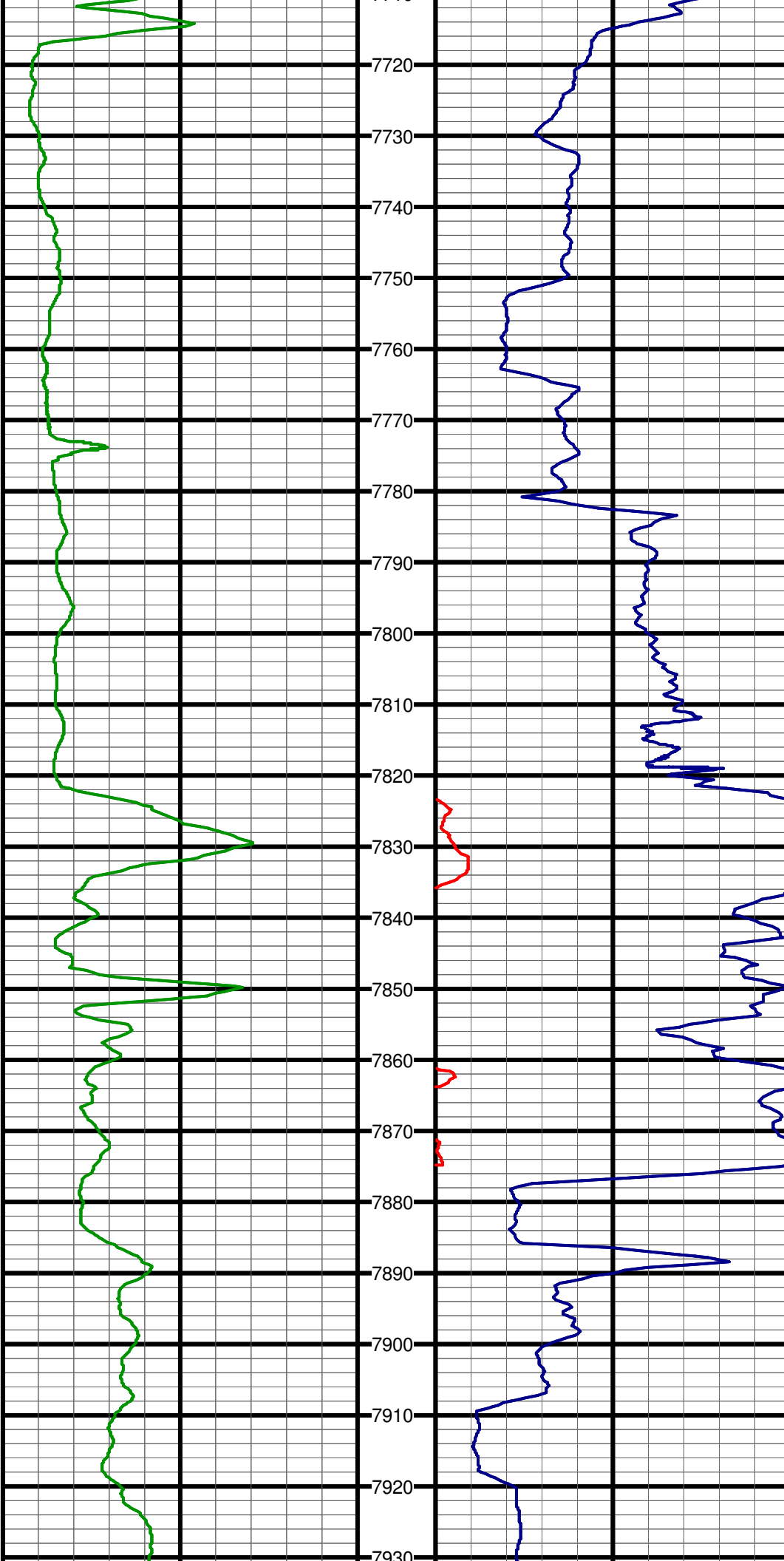


7500
7510
7520
7530
7540
7550
7560
7570
7580
7590
7600
7610
7620
7630
7640
7650
7660
7670
7680
7690
7700
7710

#142 MD:7539.0 TVD:4717.4 I:90.9 A:356.3 VS:3208.4

#143 MD:7603.0 TVD:4717.1 I:89.7 A:354.4 VS:3272.3

#144 MD:7664.0 TVD:4718.0 I:88.7 A:354.8 VS:3333.3

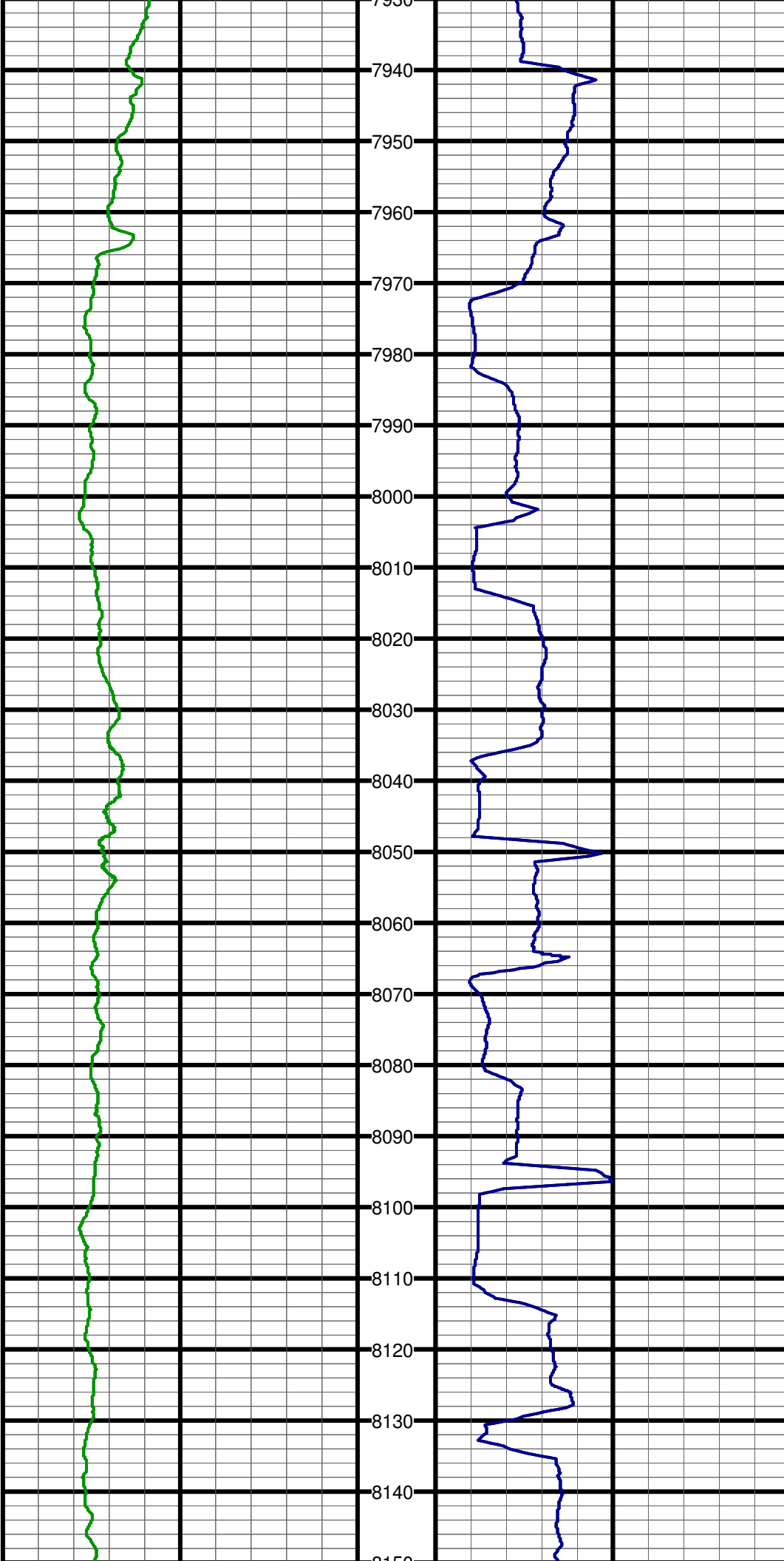


#145 MD:7728.0 TVD:4719.0 I:89.5 A:355.4 VS:3397.3

#146 MD:7790.0 TVD:4720.3 I:88.0 A:355.3 VS:3459.3

#147 MD:7853.0 TVD:4722.7 I:87.6 A:355.1 VS:3522.2

#148 MD:7916.0 TVD:4724.7 I:88.8 A:354.7 VS:3585.2



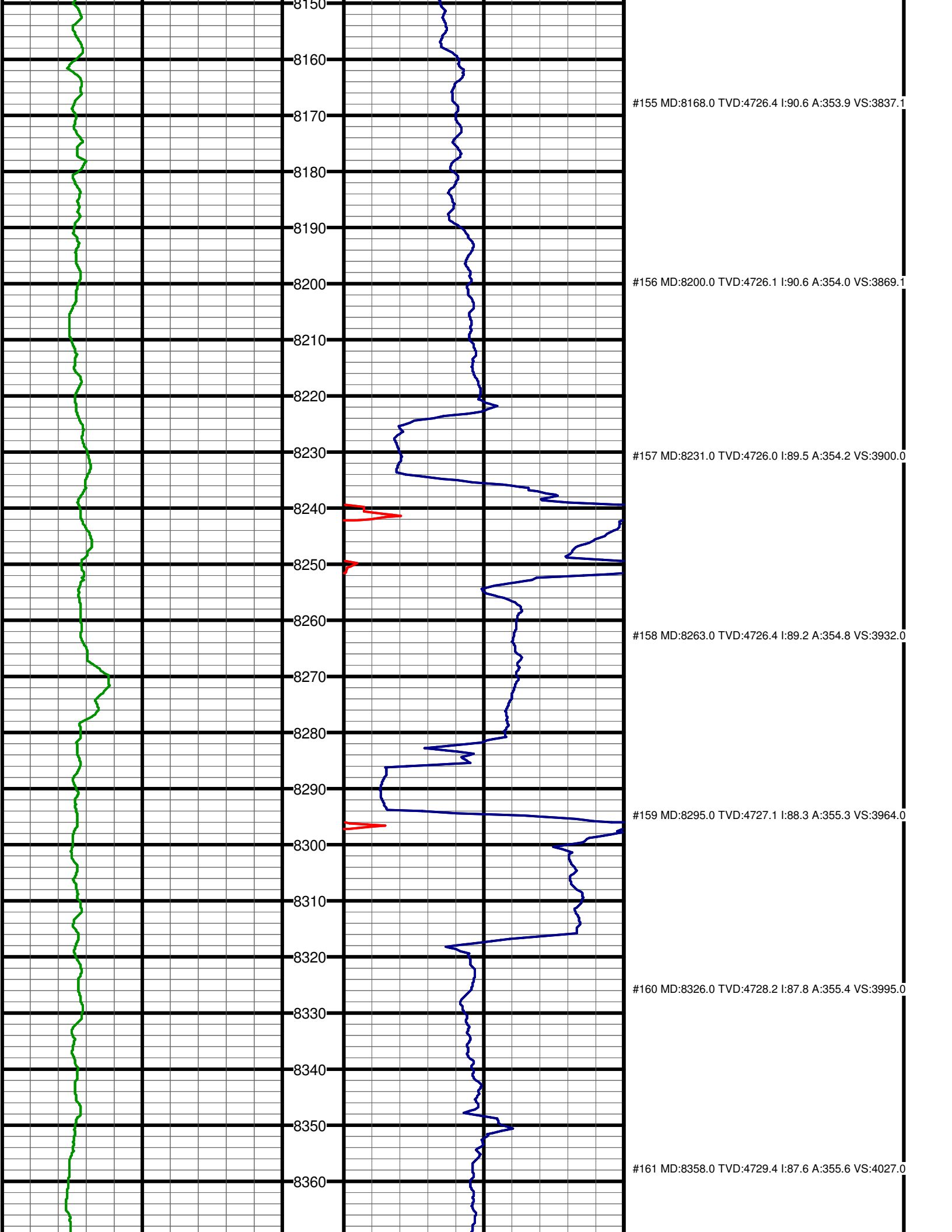
#149 MD:7979.0 TVD:4725.9 I:89.0 A:354.6 VS:3648.2

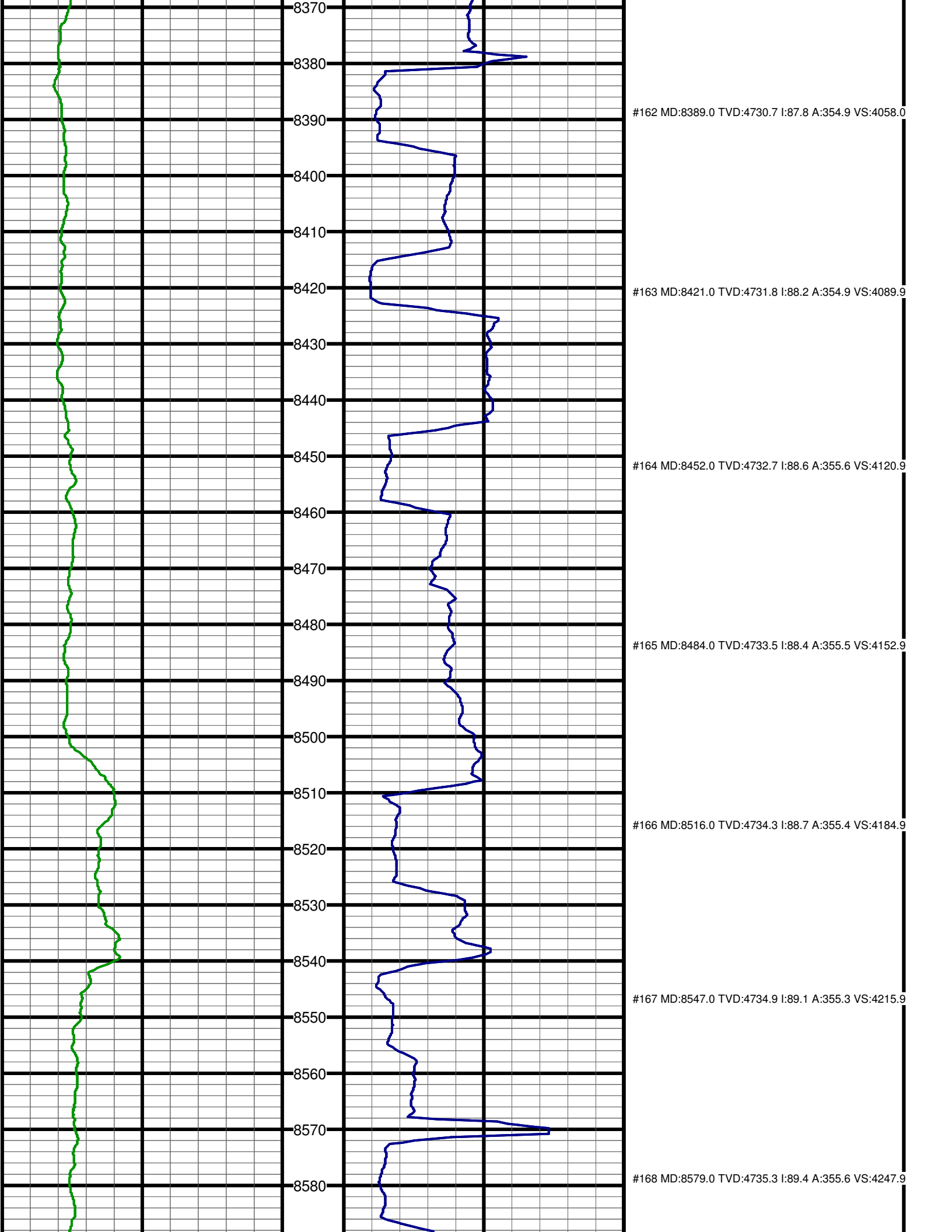
#150 MD:8042.0 TVD:4726.9 I:89.3 A:354.1 VS:3711.2

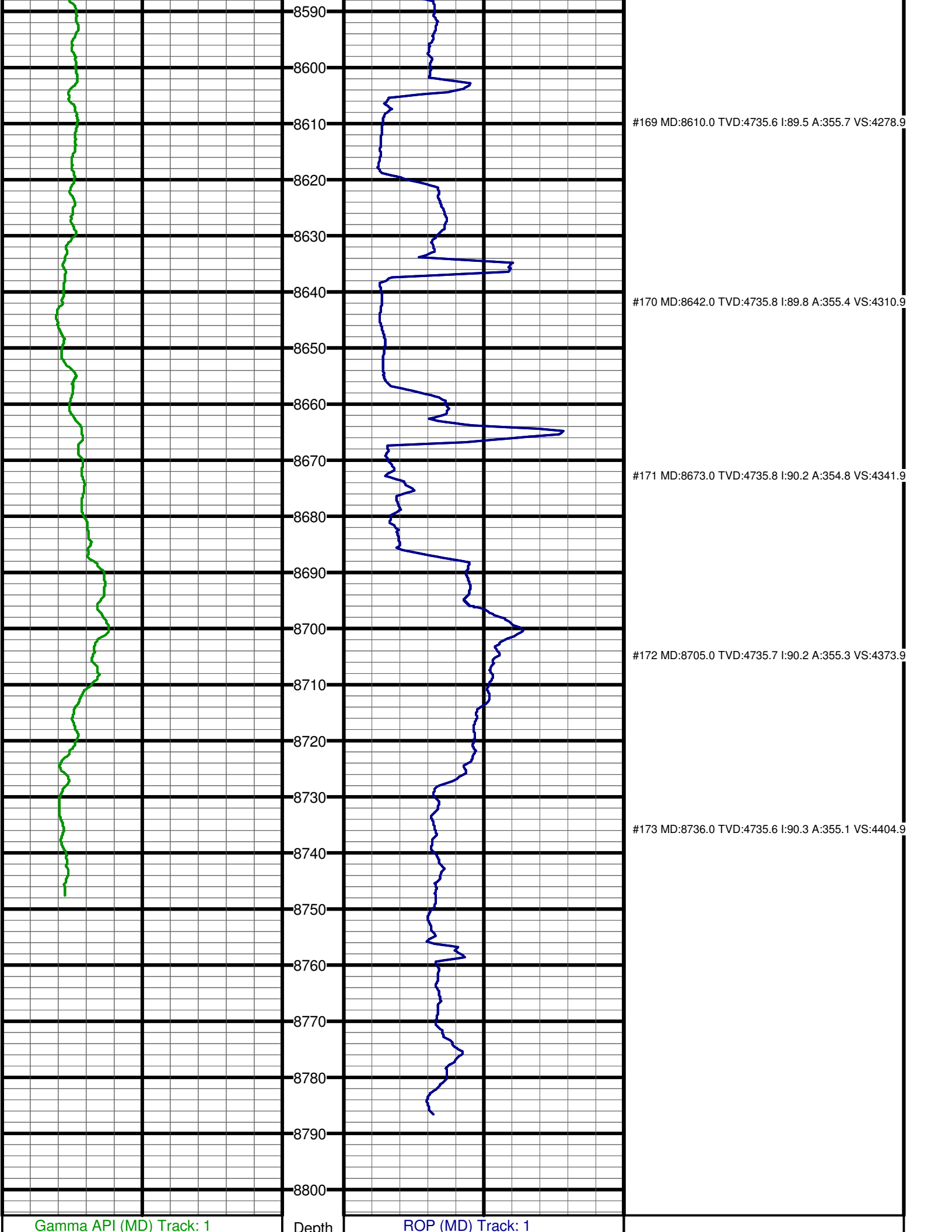
#151 MD:8074.0 TVD:4727.1 I:89.8 A:353.9 VS:3743.1

#152 MD:8105.0 TVD:4727.0 I:90.5 A:353.7 VS:3774.1

#154 MD:8137.0 TVD:4726.7 I:90.6 A:353.9 VS:3806.1







Gamma API (MD) Track: 1

Depth

ROP (MD) Track: 1

