



**MIDWEST SURVEYS**  
 LOGGING - PERFORATING - CONSULTING SERVICES  
 P.O. Box 66, Ossawatimie, KS 68064  
 913 / 755 - 2128

**GAMMA RAY / NEUTRON / CCL**

File No. \_\_\_\_\_

Company **SCZ Resources, LLC.**

Well **Rubow No. R-A14**

Field **Perry - Halligan**

County **Wilson** State **Kansas**

Location **165' FNL & 825' FEL**

Location **NE-NW-NE-NE**

Sec. **6** Twp. **27S** Rge. **17E**

Permit/Datum **GL** Elevation **1033'**

Log Measured From **GL** K.B. NA

Drilling Measured From **GL** D.F. NA

Date **11-20-2014** Elevation **GL 1033'**

Run Number **One**

Depth Logger **991.2**

Bottom Logged Interval **990.2**

Top Log Interval **200.0**

Fluid Level **Full**

Type Fluid **Water**

Density / Viscosity **NA**

Salinity - PPM Cl **NA**

Max Recorded Temp **NA**

Estimated Cement Top **0.0**

Equipment No. **107** Location **Ossawatimie**

Recorded By **Steve Wandsch**

Witnessed By **Mark Brechisen**

Witnessed By **Mark Brechisen**

BOREHOLE RECORD				CASING RECORD			
RUN No.	BIT FROM	TO	SIZE	WGT. #	FROM	TO	TO
One	9.875"	0.0	7.00"	17.0#	0.0	22.0	22.0
Two	5.875"	22.0	10.03.0	2.875"	6.5#	0.0	998.0

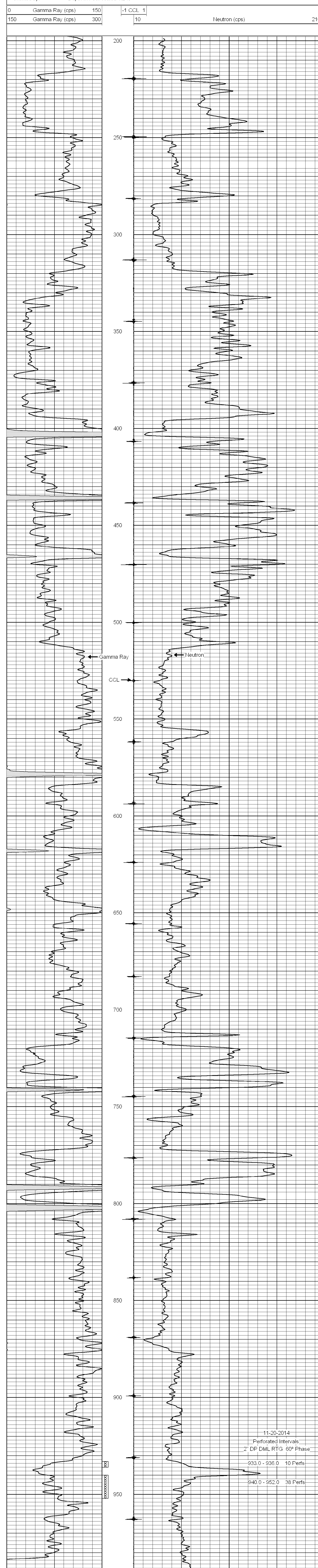
<<< Fold Here >>>

All interpretations are opinions based on inferences from electrical or other measurements and we cannot and do not guarantee the accuracy or correctness of any interpretation, and we shall not, except in the case of gross or willful negligence on our part, be liable or responsible for any loss, costs, damages, or expenses incurred or sustained by anyone resulting from any interpretation made by any of our officers, agents or employees. These interpretations are also subject to our general terms and conditions set out in our current Price Schedule.

Comments

Drilling Contractor :  
Hat Drilling, LLC

Database File: rubow 14-ar.db  
 Dataset Pathname: pass1  
 Presentation Format: gr-n-ccl  
 Dataset Creation: Thu Nov 20 11:21:21 2014 by Log SCH 111116  
 Charted by: Depth in Feet scaled 1:240



BOREHOLE RECORD				CASING RECORD			
RUN No.	BIT FROM	TO	SIZE	WGT. #	FROM	TO	TO
One	9.875"	0.0	7.00"	17.0#	0.0	22.0	22.0
Two	5.875"	22.0	10.03.0	2.875"	6.5#	0.0	998.0