



MIDWEST SURVEYS
 LOGGING - PERFORATING - CONSULTING SERVICES
 P.O. Box 68, Osawatomie, KS 66064
 913 / 755 - 2128

GAMMA RAY / NEUTRON / CCL

File No. _____

Company **SCZ Resources, LLC.**

Well **Rubow No. R-A16**

Field **Perry - Halligan**

County **Wilson**

State **Kansas**

Location **165' FNL & 165' FEL**

Other Services **Perforate**

Sec 6 **Typ 27s** **Rge 17e** **Elevation 1027'**

Permanent Datum **GL** **Elevation 1027'**

Log Measured From **GL** **K.B. NA**

Drilling Measured From **GL** **D.F. NA**

Date **12-10-2014**

Run Number **One**

Depth Driller **1015.0**

Depth Logger **995.4**

Bottom Logged Interval **994.4**

Top Log Interval **200.0**

Fluid Level **Full**

Type Fluid **Water**

Density / Viscosity **NA**

Salinity - PPM Cl **NA**

Max Recorded Temp **NA**

Estimated Cement Top **0.0**

Equipment No. **107** **Osawatomie**

Recorded By **Steve Windisch**

Witnessed By **Mark Brechisen**

BOREHOLE RECORD

RIN	BIT	FROM	TO	SIZE	WGT.	FROM	TO
One	9.875"	0.0	20.0	7.00"	17.0#	0.0	20.0
Two	5.875"	20.0	1915.0	2.875"	6.5#	0.0	1006.0

CASINGS RECORD

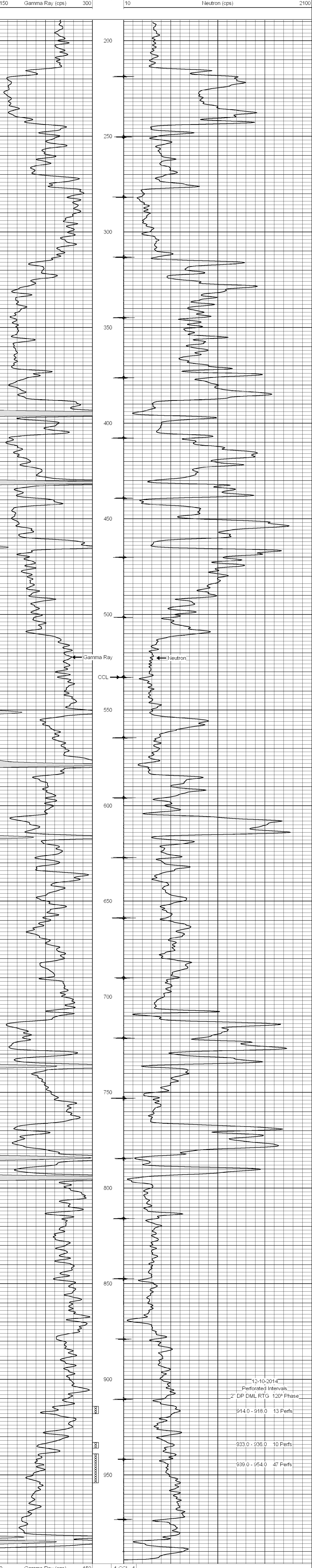
<<< Fold Here >>>

All interpretations are opinions based on inferences from electrical or other measurements and we cannot and do not guarantee the accuracy or correctness of any interpretation, and we shall not, except in the case of gross or willful negligence on our part, be liable or responsible for any loss, costs, damages, or expenses incurred or sustained by anyone resulting from any interpretation made by any of our officers, agents or employees. These interpretations are also subject to our general terms and conditions set out in our current Price Schedule.

Comments

Drilling Contractor :
 Hat Drilling, LLC

Database File: rubow 16ar.db
 Dataset Pathname: pass1
 Presentation Format: gr-n-ccl
 Dataset Creation: Wed Dec 10 13:10:02 2014 by Log SCH 111116
 Charted by: Depth in Feet scaled 1:240



12-10-2014
 Perforated Intervals
 2" DP DML RTG 120° Phase
 914.0 - 918.0 13 Perfs
 933.0 - 936.0 10 Perfs
 939.0 - 954.0 47 Perfs

0 Gamma Ray (cps) 150 -1 CCL 1 Neutron (cps) 2100