



MIDWEST SURVEYS
LOGGING - PERFORATING - CONSULTING SERVICES
P.O. Box 66, Osawatomie, KS 66064
913 / 735 - 2128

GAMMA RAY / NEUTRON / CCL

File No.

Company **SCZ Resources, LLC.**

Well **Rubow No. R-E15**

Field **Perry - Halligan**

County **Wilson** State **Kansas**

Location **1485 FNL & 495 FEL
NW-NE-SE-NE**

Sec. 6 Type 27s Rge. 17e

Perforated Interval
Log Measured From
Drilling Measured From

GL GL GL
GL GL GL

Other Services
Perforate

Elevation
K.B. NA
D.F. NA
G.L. 1023'

Date 11-19-2014

Run Number One

Depth Driller 1005.0

Depth Logger 992.0

Bottom Logged Interval 991.0

Top Log Interval 200.0

Fluid Level Full

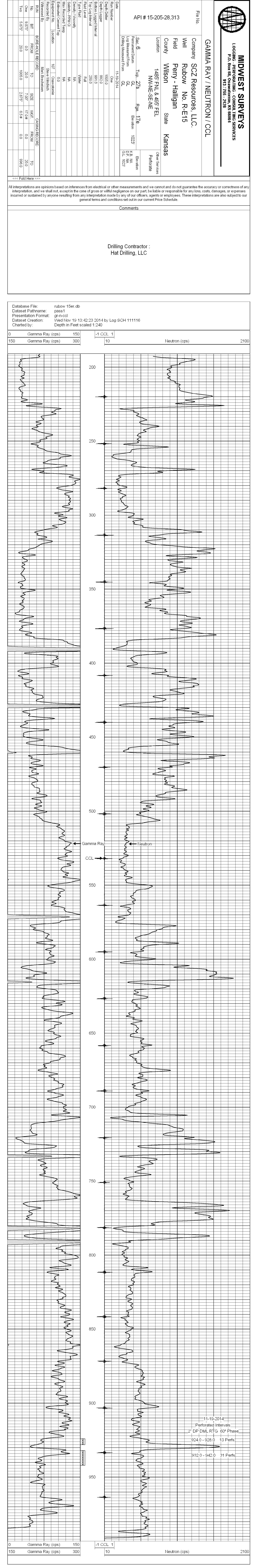
Type Fluid Water

Density / Viscosity NA

Salinity - PPM Cl NA

Max. Recorded Temp NA

Estimated Cement Top 0.0



Drilling Contractor :
Hat Drilling, LLC

Database File: rubow 15er.db
Dataset Pathname: pass1
Presentation Format: gr-n-ccl
Dataset Creation: Wed Nov 19 13:42:23 2014 by Log SCH 111116
Charted by: Depth in Feet scaled 1:240

