



MIDWEST SURVEYS
 LOGGING - PERFORATING - CONSULTING SERVICES
 P.O. Box 68, Ossawatimie, KS 66064
 913 / 735 - 2128

GAMMA RAY / NEUTRON / CCL

File No. _____

Company **SCZ Resources, LLC.**

Well **Rubow No. R-E13**

Field **Perry - Halligan**

County **Wilson** State **Kansas**

Location **1485' FNL & 1155' FEL**

Location **NW-NW-SE-NE**

Other Services
Perforate

Sec. 6
Permament Datum
Log Measured From
Drilling Measured From

Typ. 27s
GL
GL
GL

Age 17e
Elevation
Elevation

1024'
K.B. NA
D.F. NA
G.L. 1024'

Date
Run Number
Depth Driller
Depth Logger

01-05-2015
One
1002.0
988.9

Bottom Logged Interval
Top Log Interval
Fluid Level

985.9
200.0
Full

Type Fluid
Density / Viscosity
Salinity - PPM Cl

Water
NA
NA

Max Recorded Temp
Estimated Cement Top

NA
NA
0.0

Equipment No.
Location

107 L
Ossawatimie

Recorded By
Witnessed By

Steve Vandrish
Mark Bredtisen

BORE-HOLE RECORD
CASINGS RECORD

Run No.	BIT	FROM	TO	SIZE	WGT.	FROM	TO
One	9.875"	0.0	22.0	7.00"	17.0 #	0.0	22.0
Two	5.875"	22.0	1002.0	2.875"	6.5 #	0.0	983.0

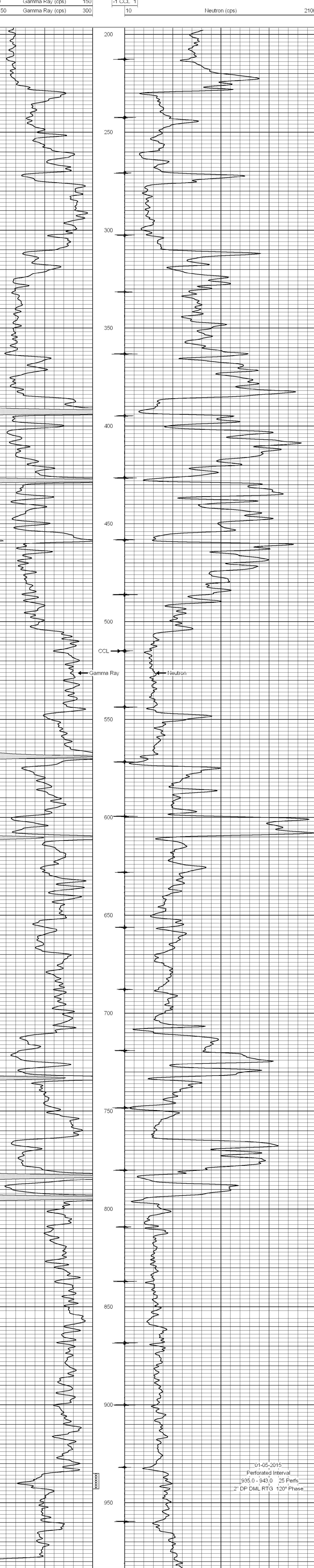
<<< Fold Here >>>

All interpretations are opinions based on inferences from electrical or other measurements and we cannot and do not guarantee the accuracy or correctness of any interpretation, and we shall not, except in the case of gross or willful negligence on our part, be liable or responsible for any loss, costs, damages, or expenses incurred or sustained by anyone resulting from any interpretation made by any of our officers, agents or employees. These interpretations are also subject to our general terms and conditions set out in our current Price Schedule.

Comments

Drilling Contractor :
Hat Drilling, LLC

Database File: rubow 13er.db
 Dataset Pathname: pass1
 Presentation Format: gr-n-ccl
 Dataset Creation: Mon Jan 05 12:47:51 2015 by Log SCH 111116
 Charted by: Depth in Feet scaled 1:240



0 Gamma Ray (cps) 150
 150 Gamma Ray (cps) 300

-1 CCL 1
 10 Neutron (cps) 2100