

CEMENT BOND LOG

Company **CROSS BAR ENERGY, LLC**
 Well **BURKETT "D" #40**
 Field **BURKETT**
 County **GREENWOOD**
 State **KANSAS**

Company **CROSS BAR ENERGY, LLC.**
 Well **BURKETT "D" #40**
 Field **BURKETT**
 County **GREENWOOD** State **KANSAS**

Location **330' FSL & 530' FEL
W/2-SE-SE-SE**
 SEC. **23** TWP. **23S** RGE. **10E**
 Permanent Datum **GROUND LEVEL** Elevation **1226**
 Log Measured From **GROUND LEVEL**
 Drilling Measured From **GROUND LEVEL**
 Other Services
 K.B. 1226
 D.F.
 G.L. 1226

Date	12-09-2014						
Run Number	ONE						
Depth Driller	2750						
Depth Logger	2726						
Bottom Logged Interval	2725						
Top Log Interval	0						
Open Hole Size	WATER						
Type Fluid	WATER						
Density / Viscosity							
Max. Recorded Temp.							
Estimated Cement Top	70						
Time Well Ready							
Time Logger on Bottom							
Equipment Number	52						
Location	GREAT BEND						
Recorded By	LEE BRETZ						
Witnessed By	MR. ALBERT BRENSING						
Borehole Record		Tubing Record					
Run Number	Bit	From	To	Size	Weight	From	To
Casing Record	Size	Wgt/Ft		Top	Bottom		
Surface String	8.625			0	205		
Prot. String							
Production String	5.5			0	2740		
Liner							

<<< Fold Here >>>

All interpretations are opinions based on inferences from electrical or other measurements and we cannot and do not guarantee the accuracy or correctness of any interpretation, and we shall not, except in the case of gross or willful negligence on our part, be liable or responsible for any loss, costs, damages, or expenses incurred or sustained by anyone resulting from any interpretation made by any of our officers, agents or employees. These interpretations are also subject to our general terms and conditions set out in our current Price Schedule.

Comments

THANK YOU FOR USING LOG TECH OF KANSAS!
 (620)792-2167

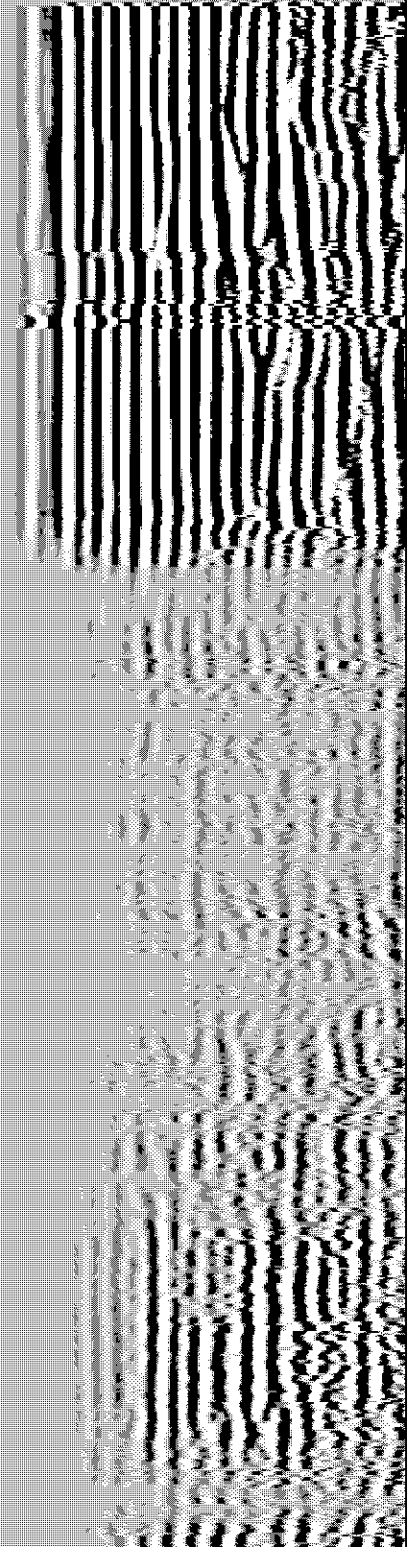
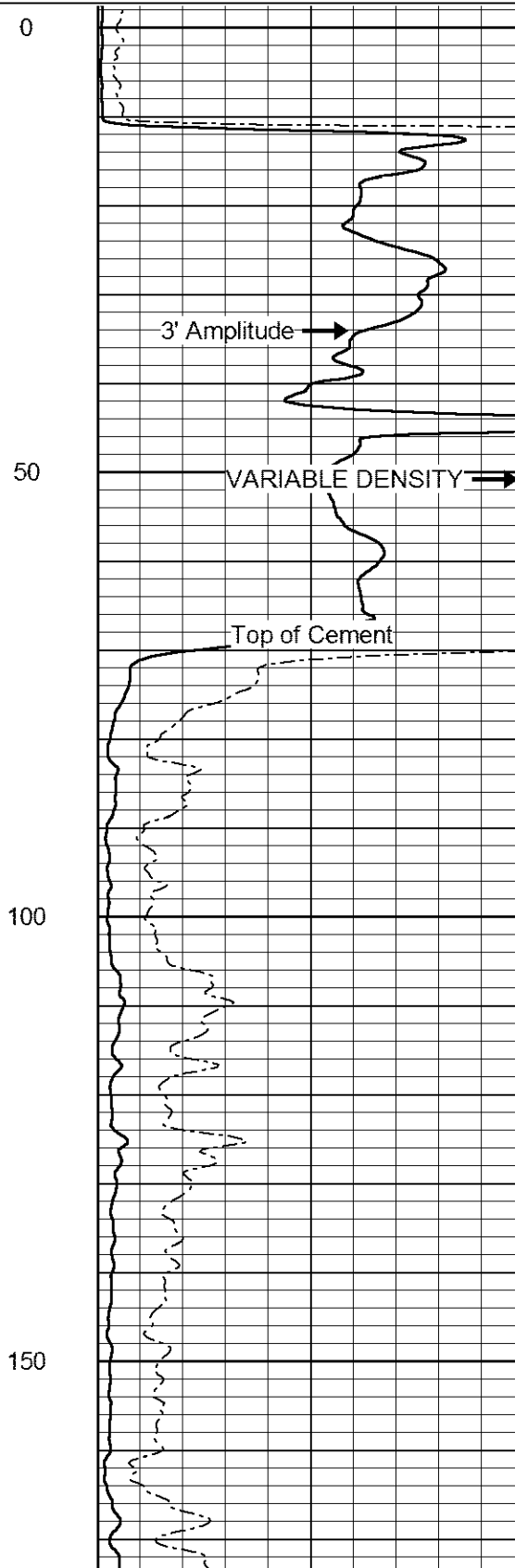
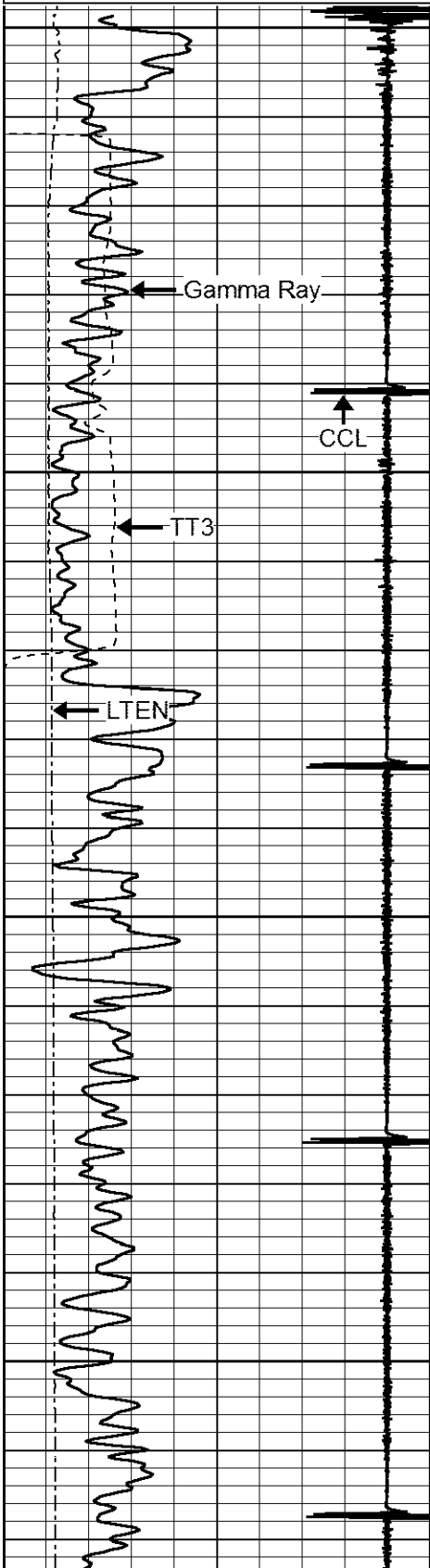
DIRECTIONS
 CASSODAY,KS
 20 MILES EAST TO RD Q
 1 SOUTH 1/4 WEST NORTH INTO

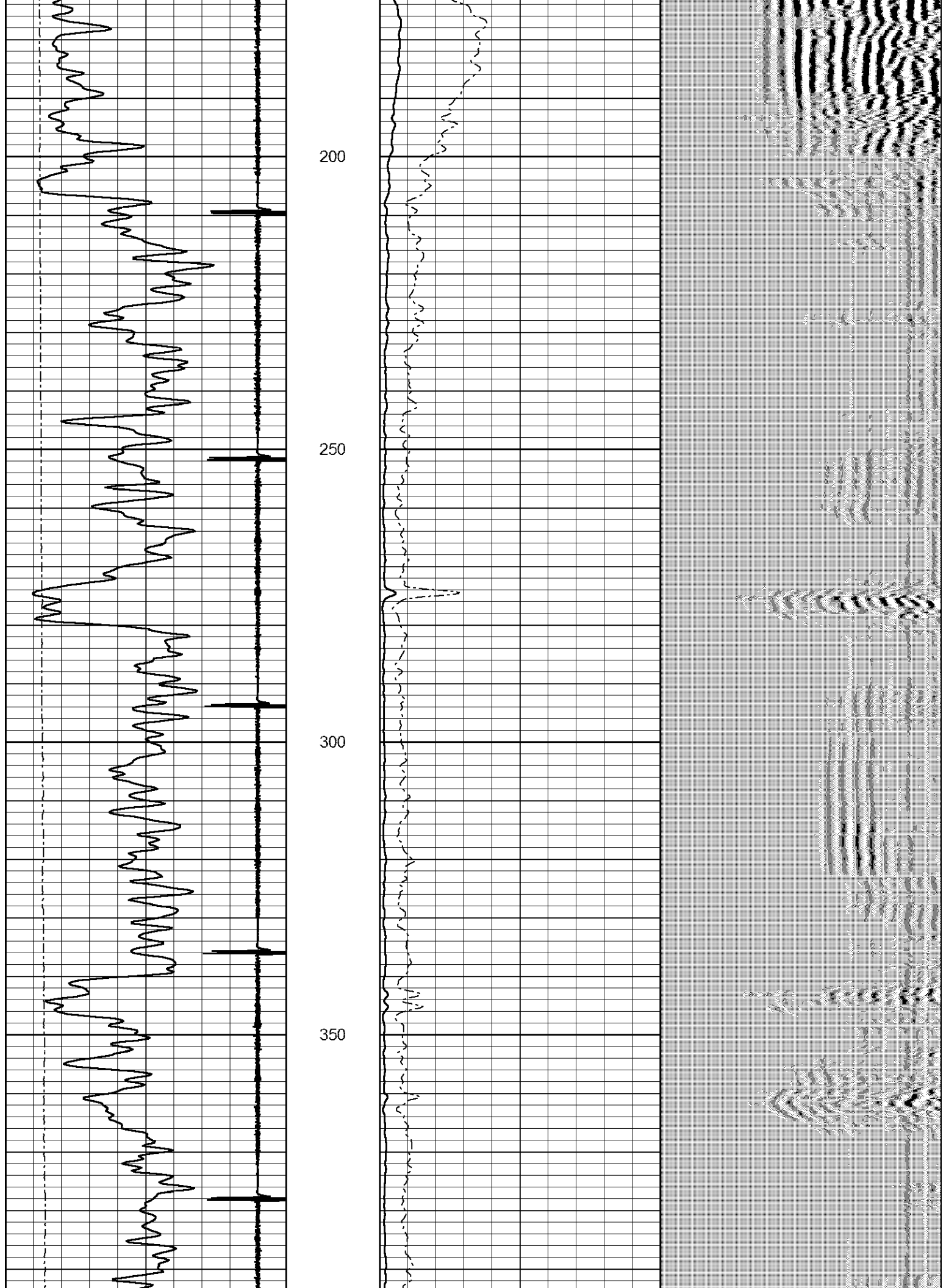
CORRECTED +.3 TO OPENHOLE LOG

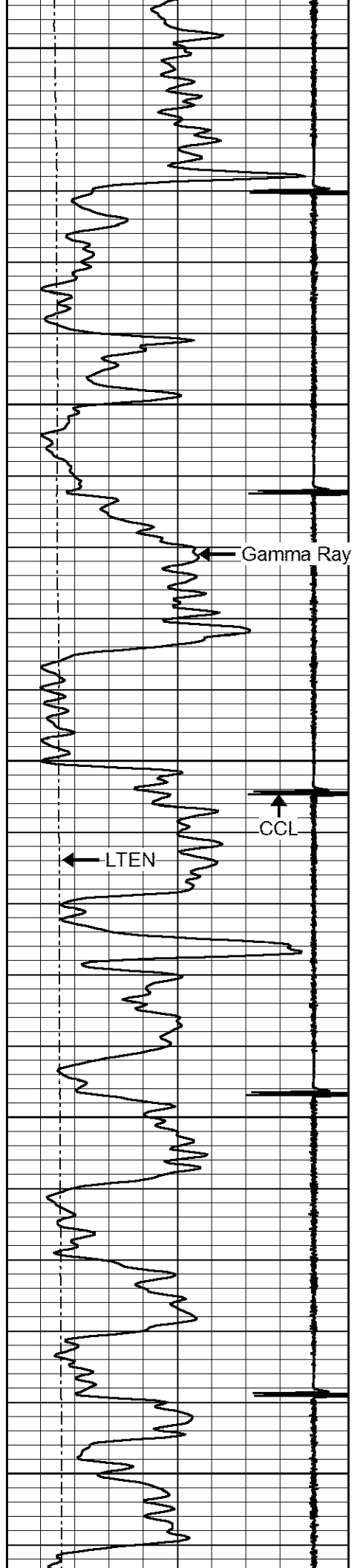
Database File: burkett40.db
 Dataset Pathname: pass3
 Presentation Format: cbl02
 Dataset Creation: Tue Dec 09 08:30:59 2014 by Log 7.0 B1
 Charted by: Depth in Feet scaled 1:240

9	Collar Locator	-1
0	Gamma Ray (GAPI)	150
320	TT3 (usec)	120
0	LTEN (lb)	2000

0	Amplitude (mV)	100	200	VARIABLE DENSITY	1200
0	X5 Amplitude (mV)	20			







400

450

500

550

600

Gamma Ray

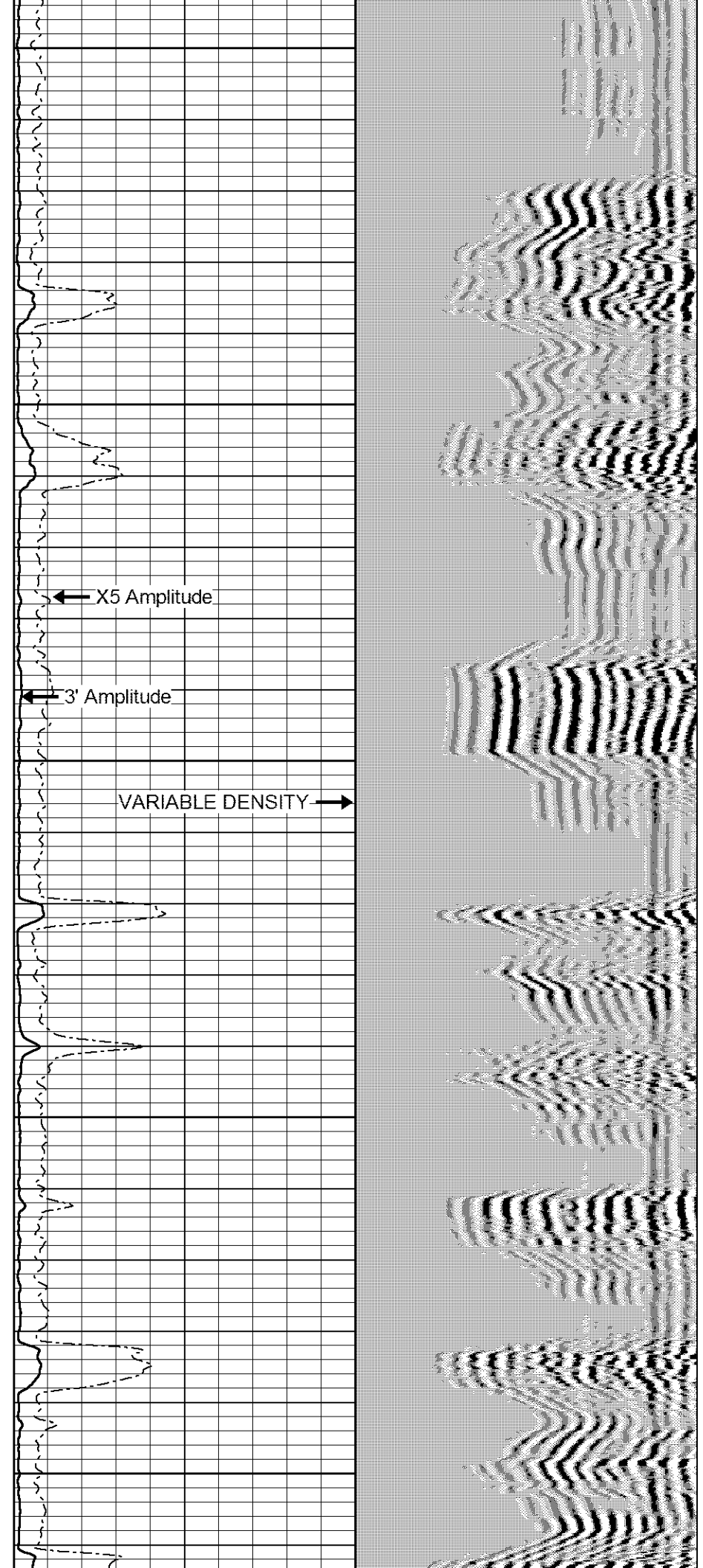
LTEN

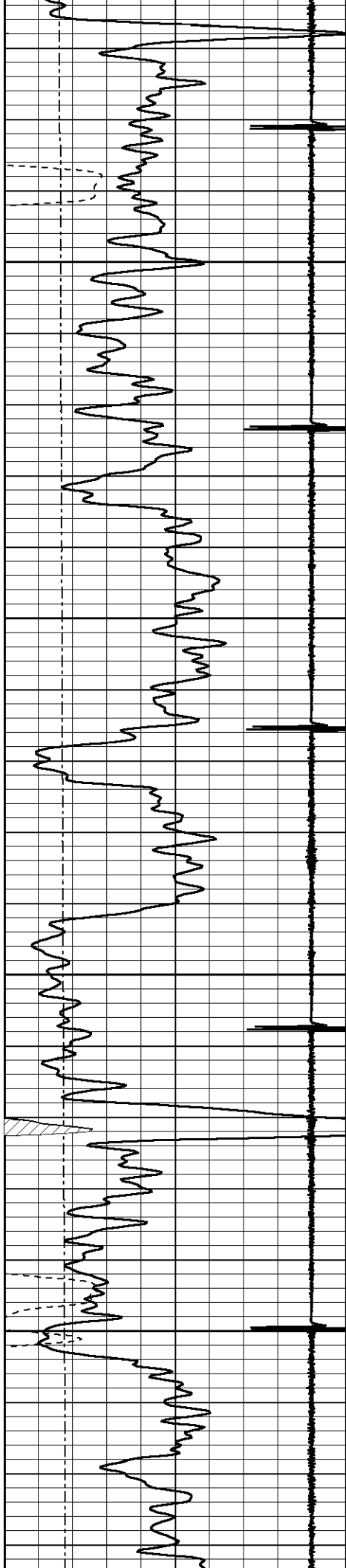
CCL

X5 Amplitude

3' Amplitude

VARIABLE DENSITY



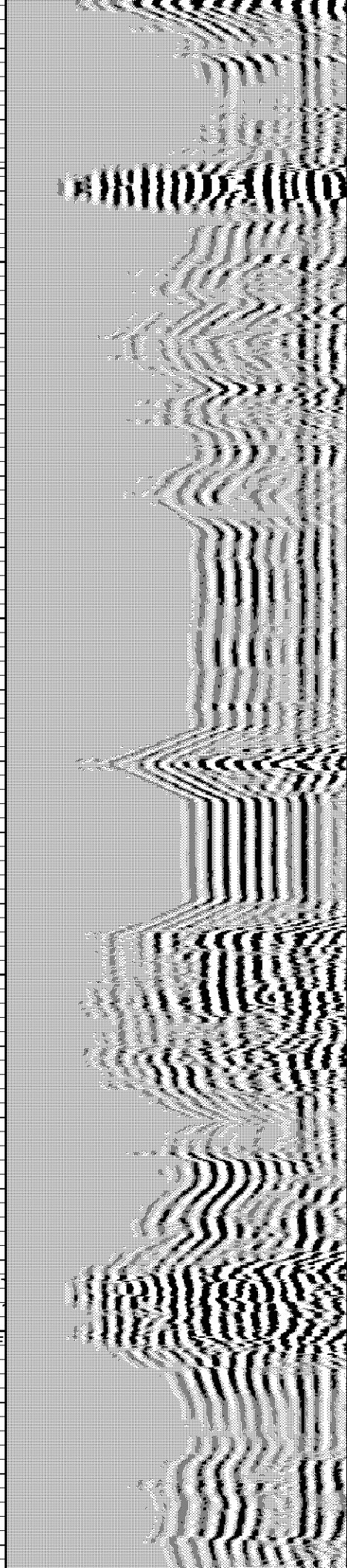
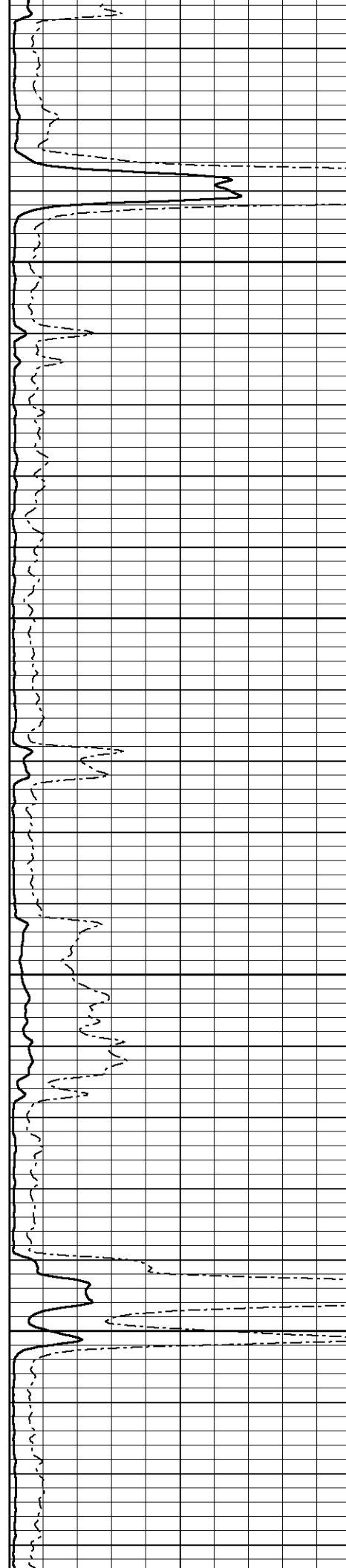


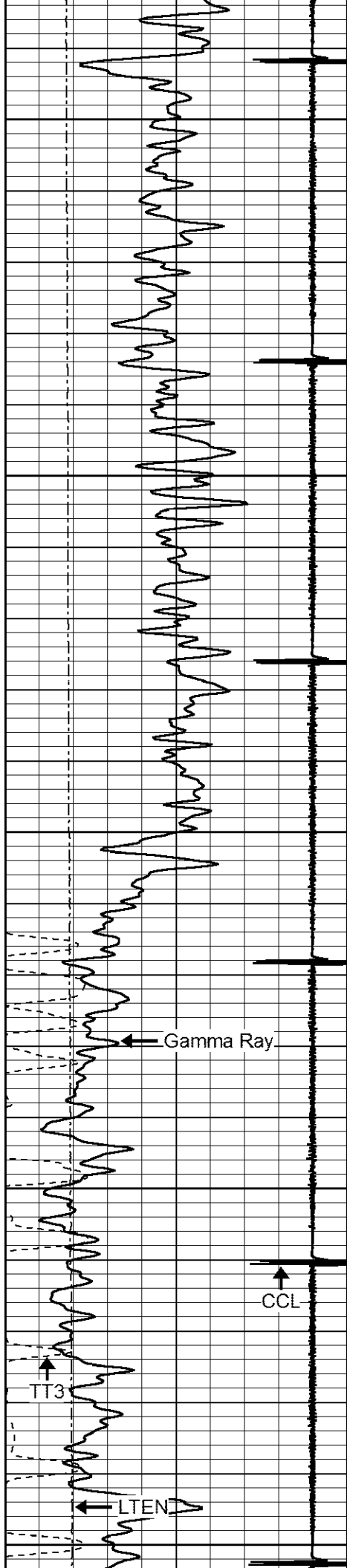
650

700

750

800





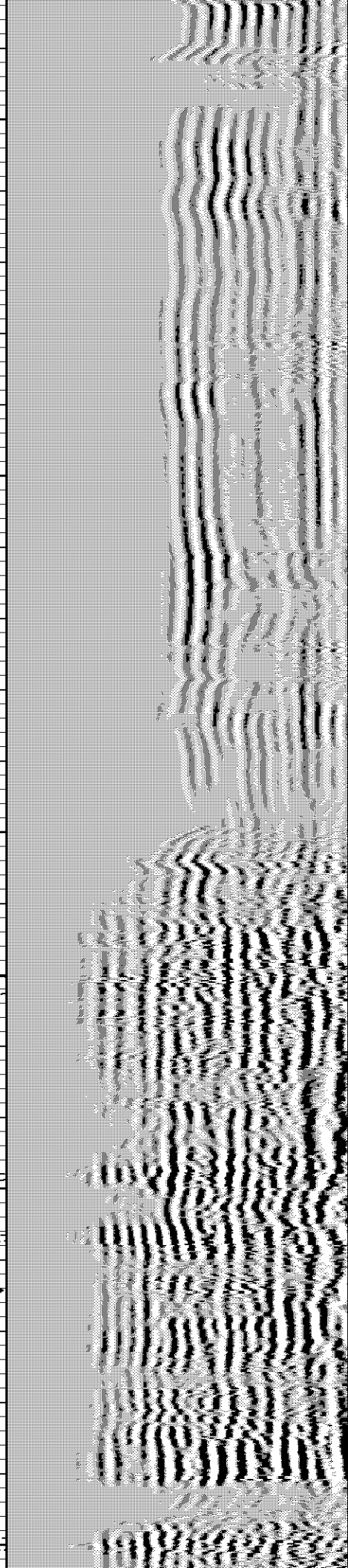
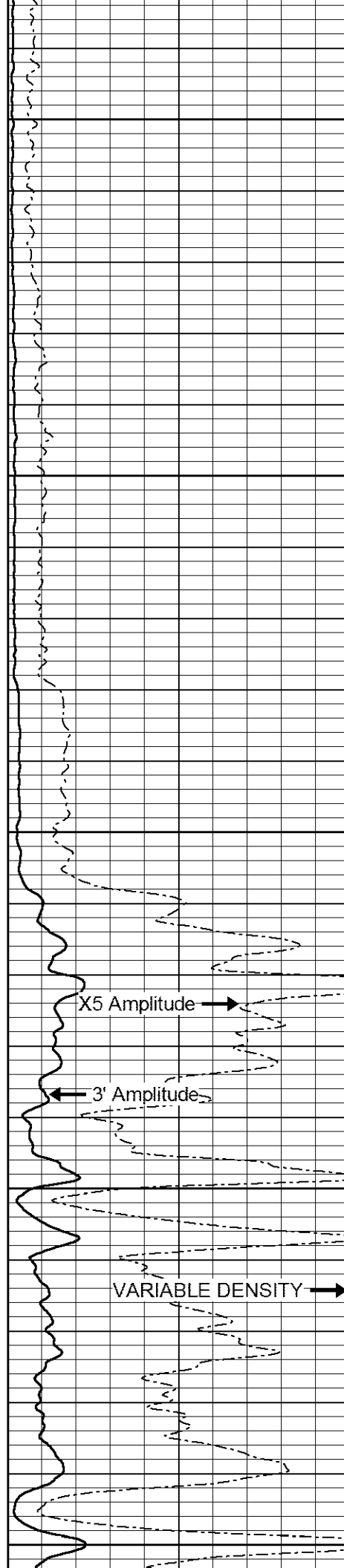
850

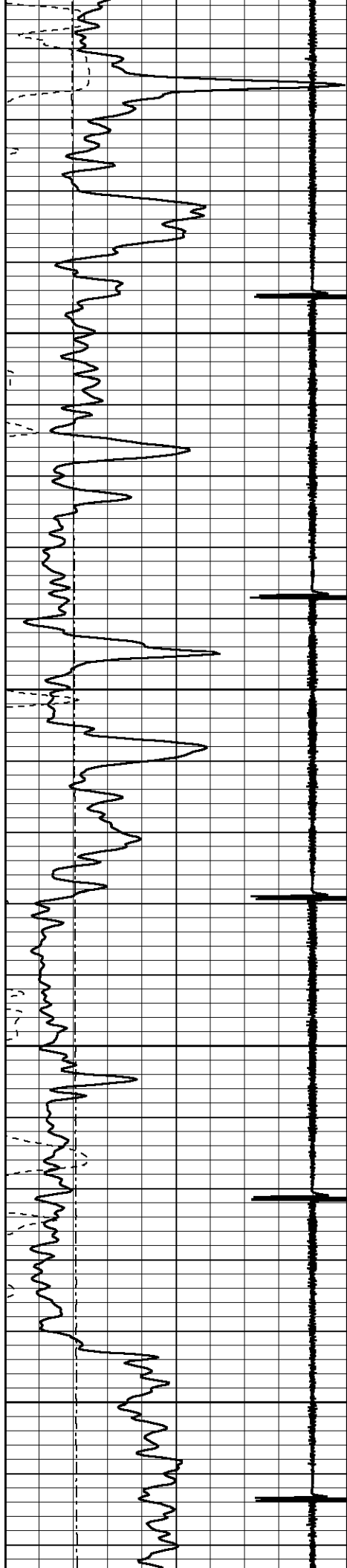
900

950

1000

1050



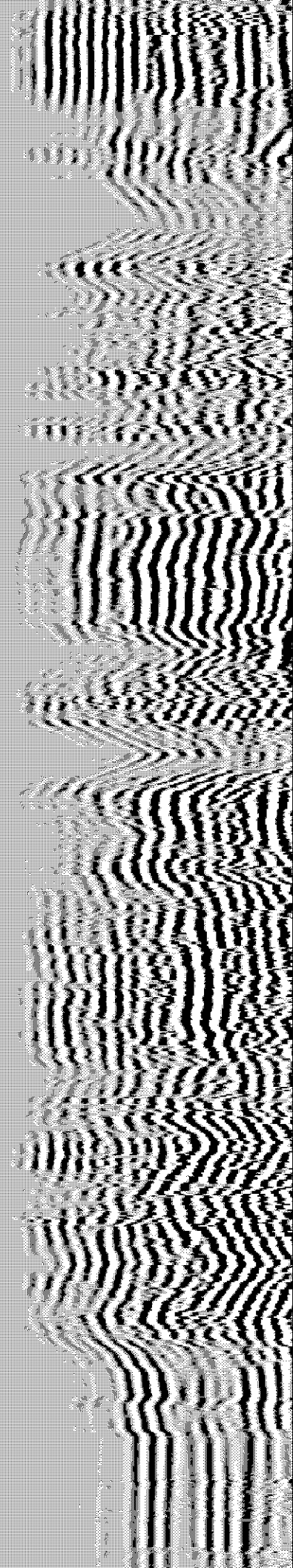
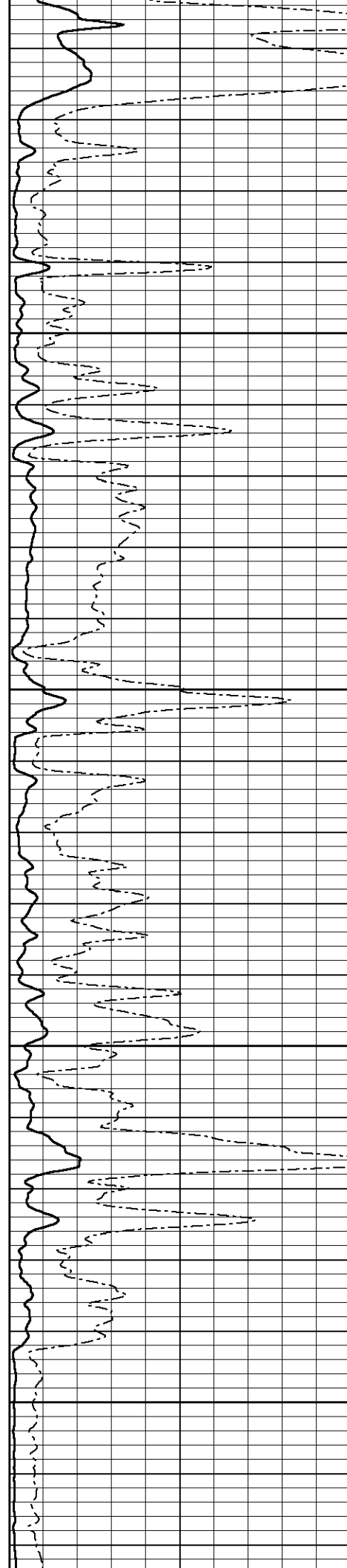


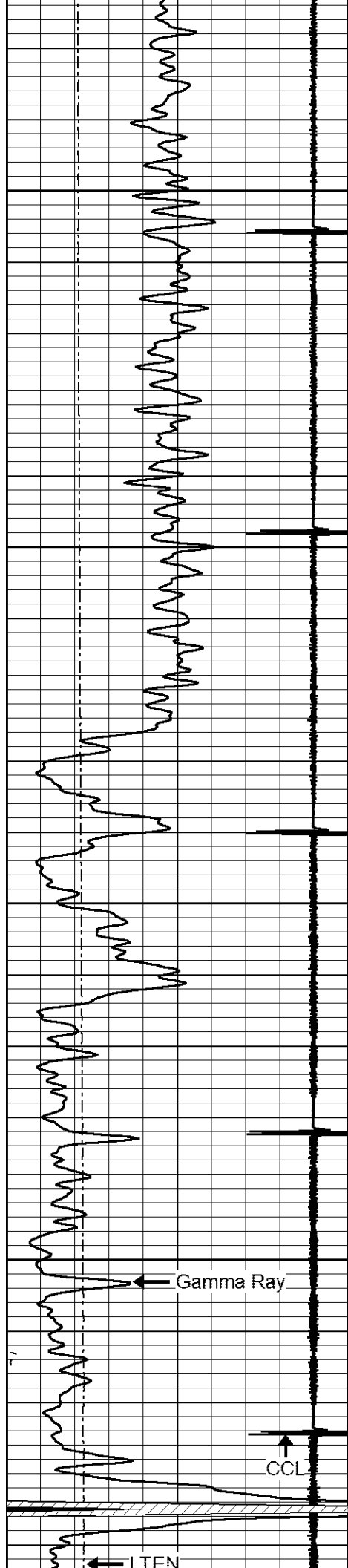
1100

1150

1200

1250



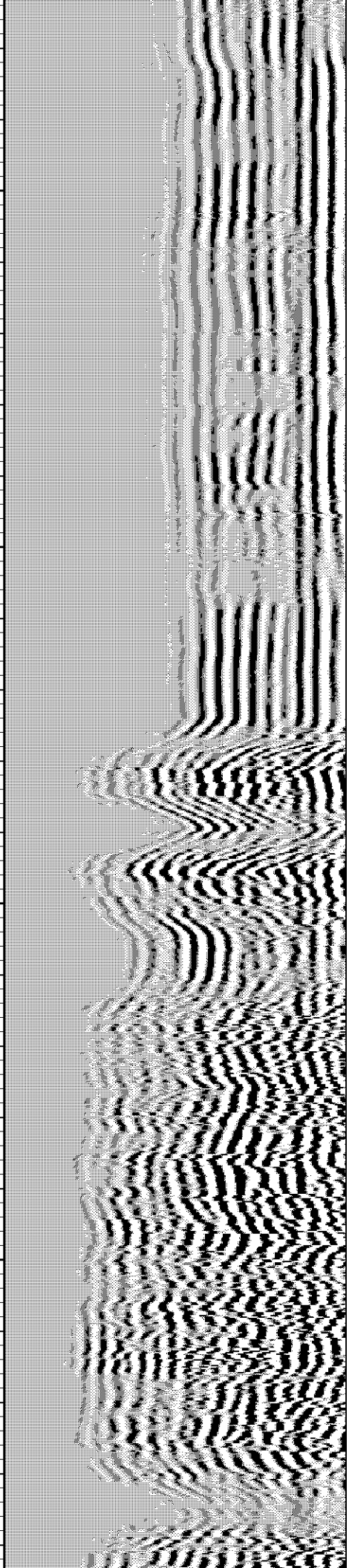
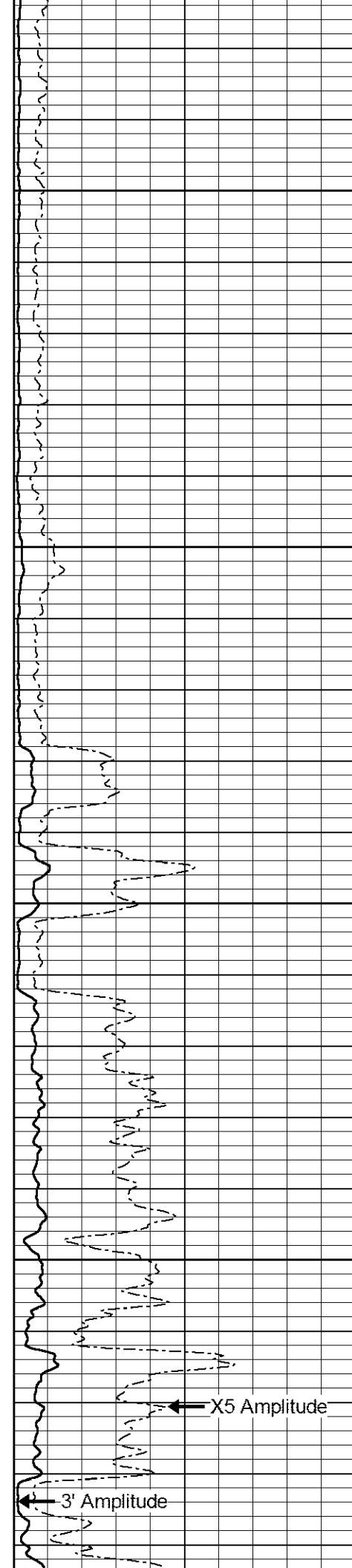


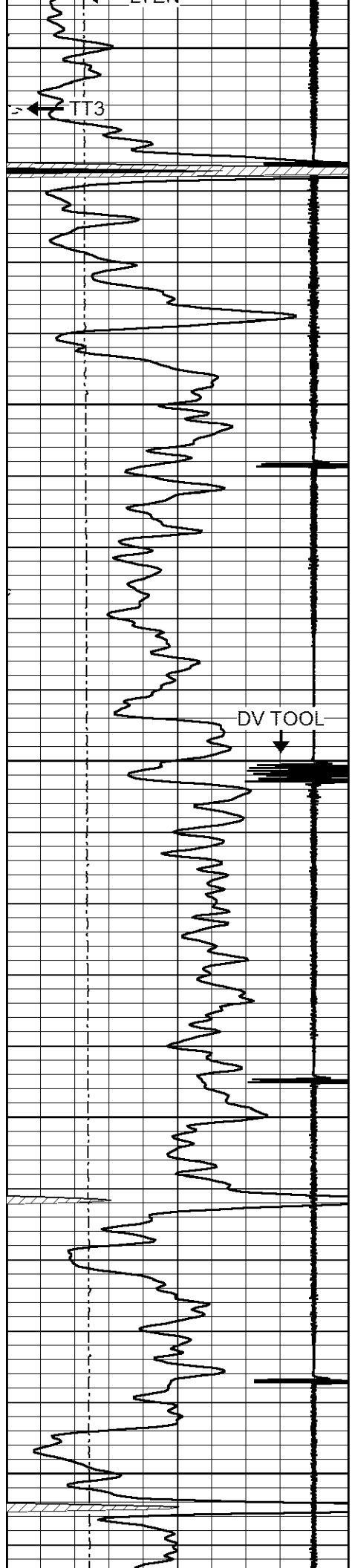
1300

1350

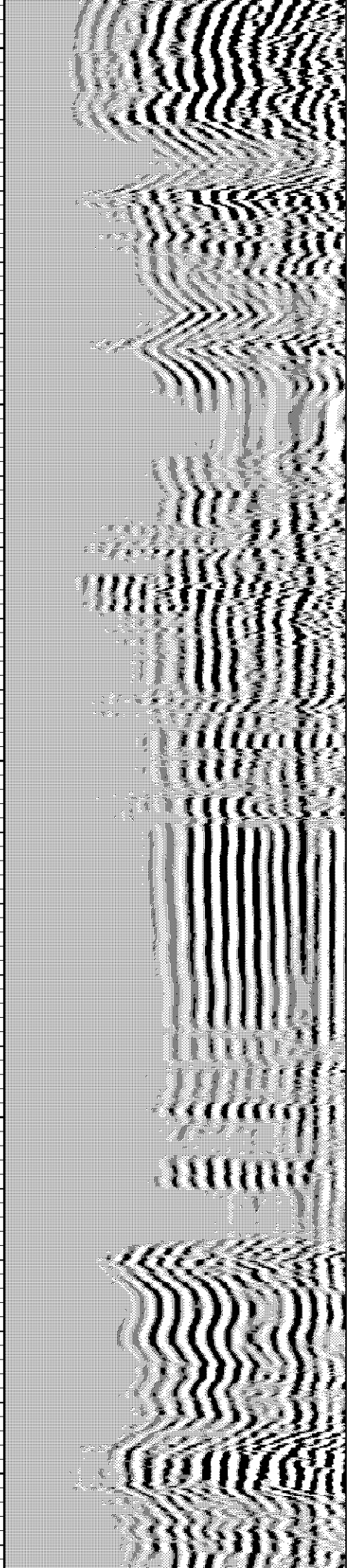
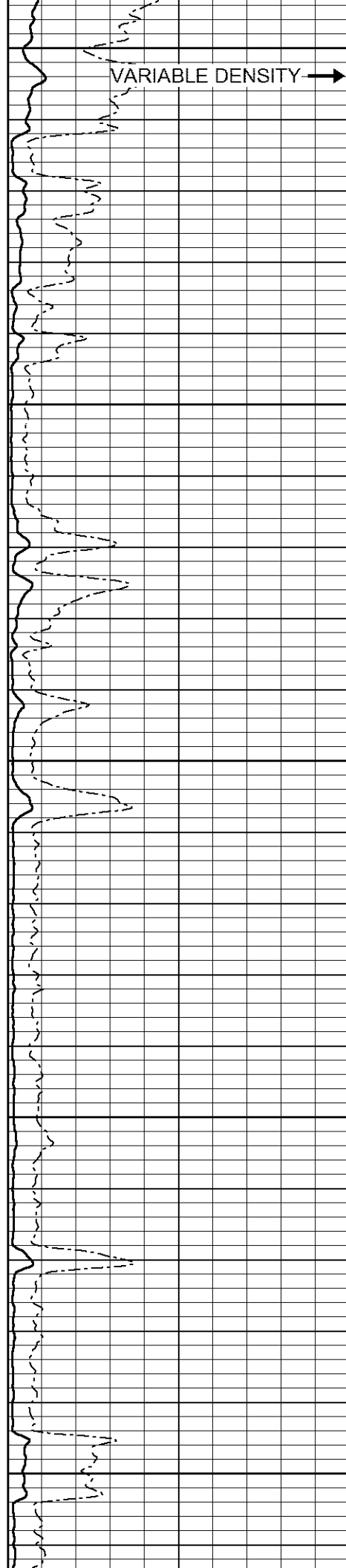
1400

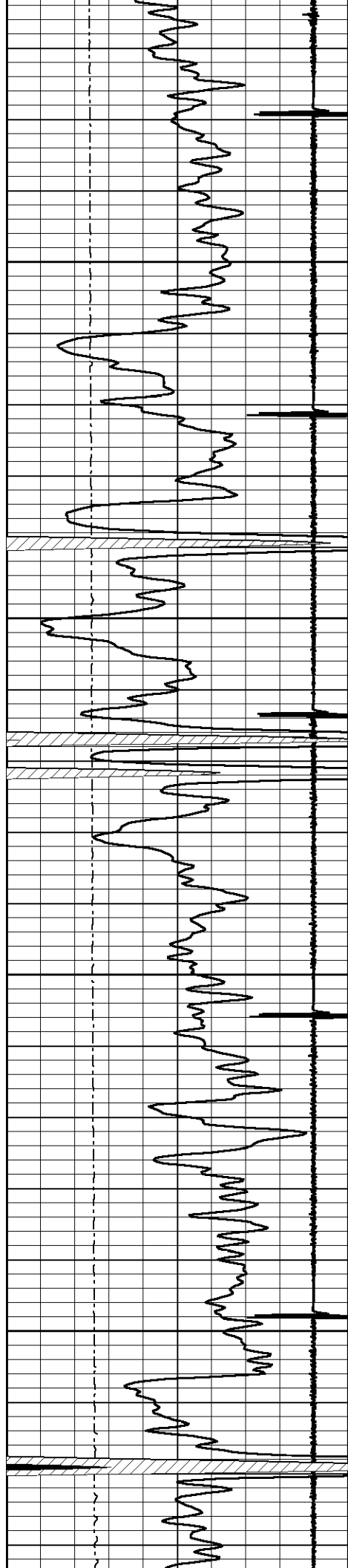
1450





1500
1550
1600
1650
1700



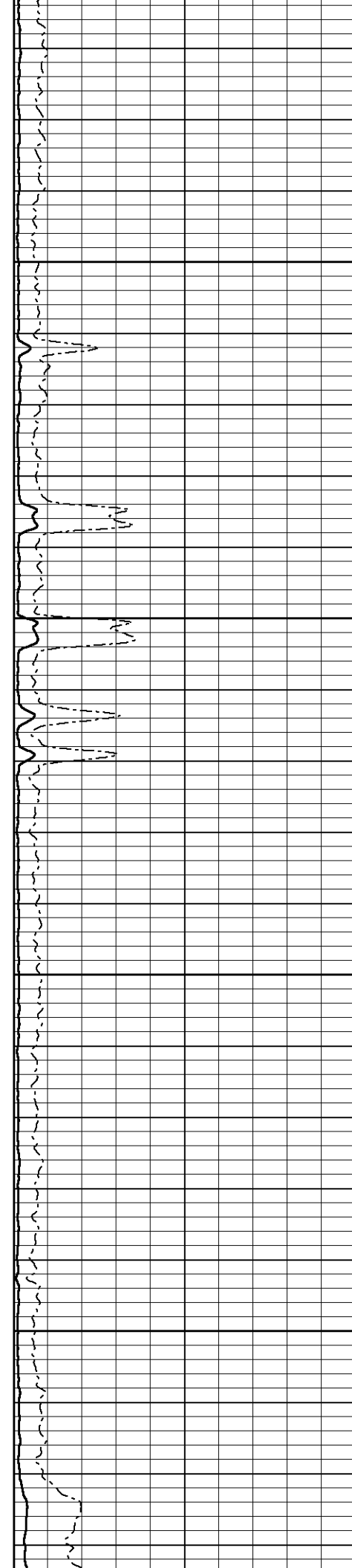


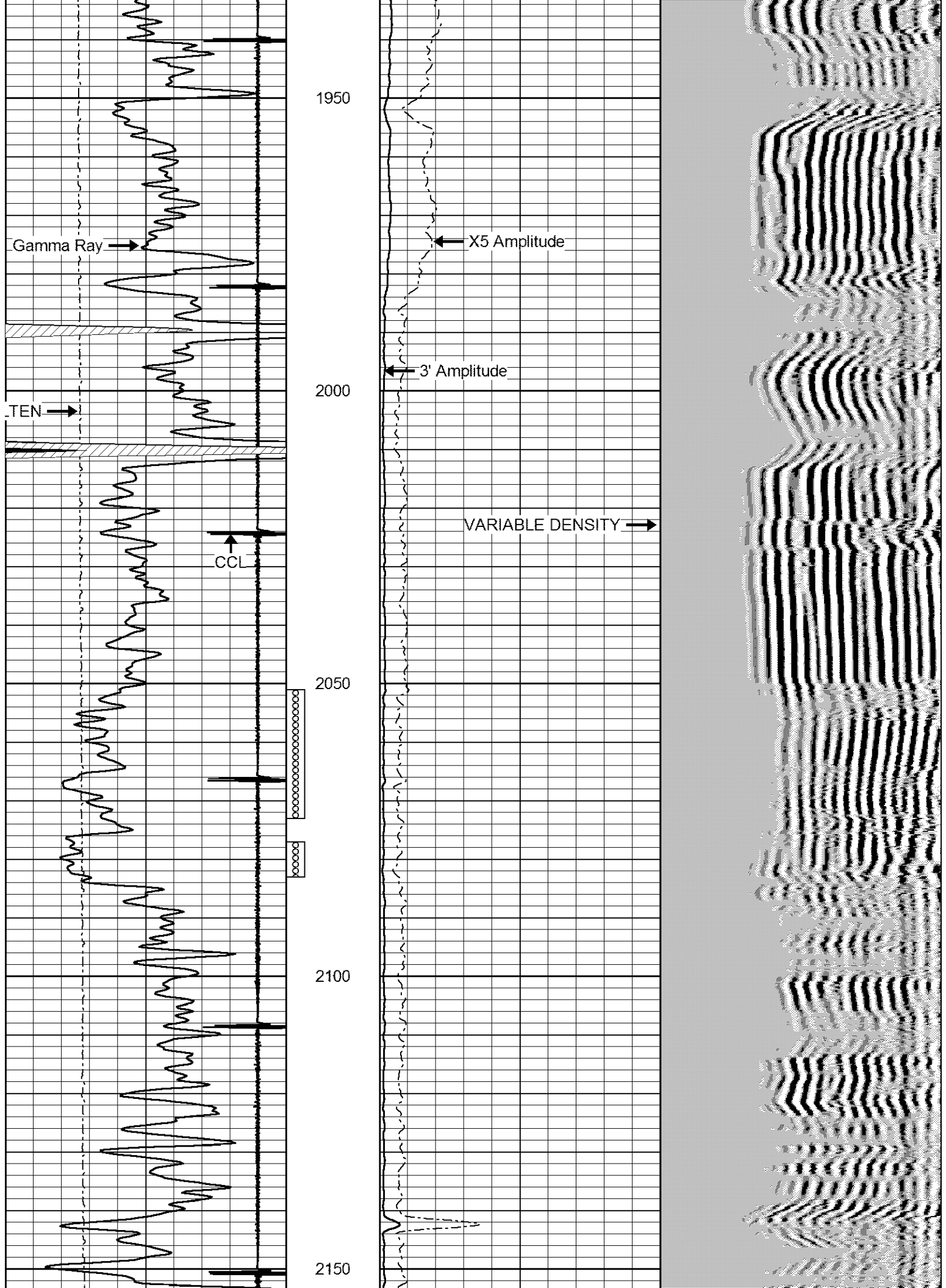
1750

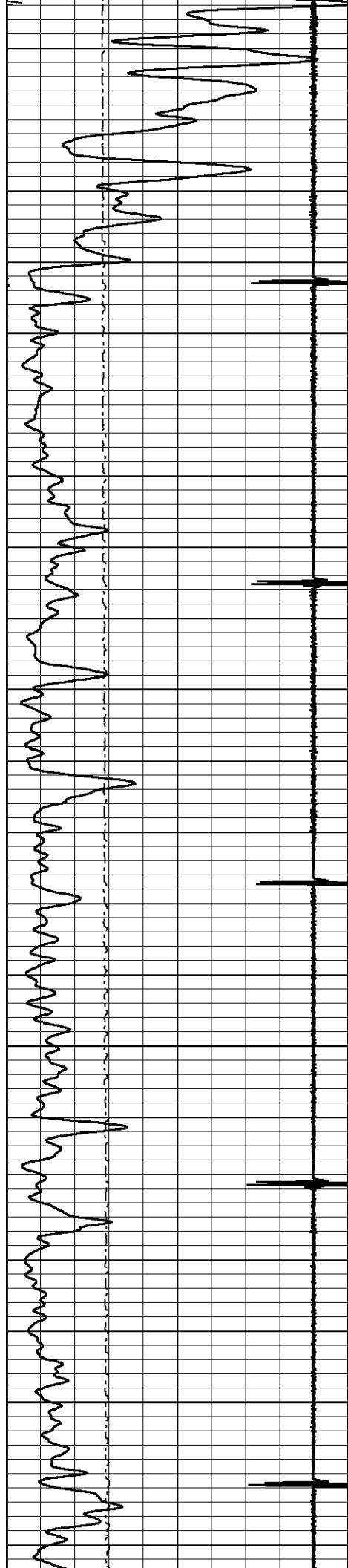
1800

1850

1900





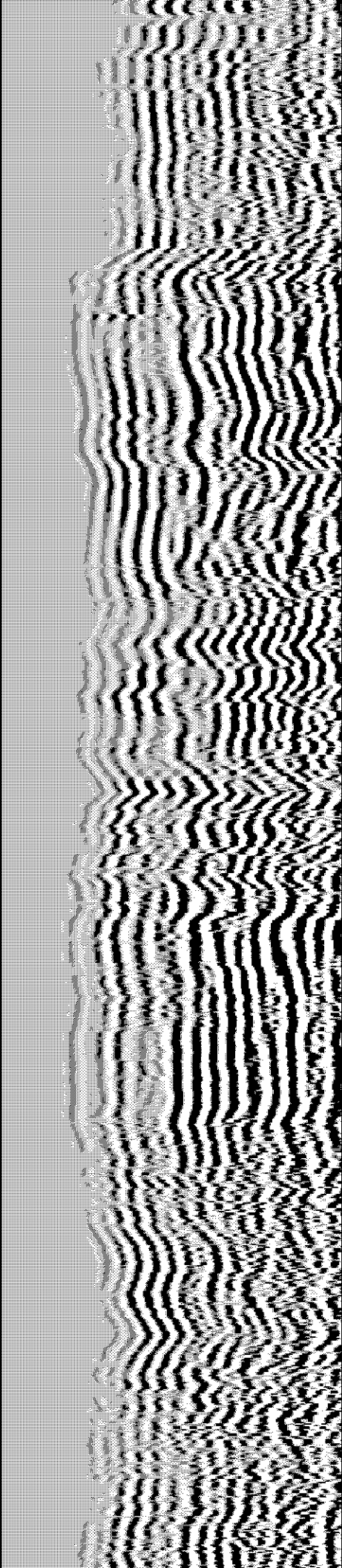
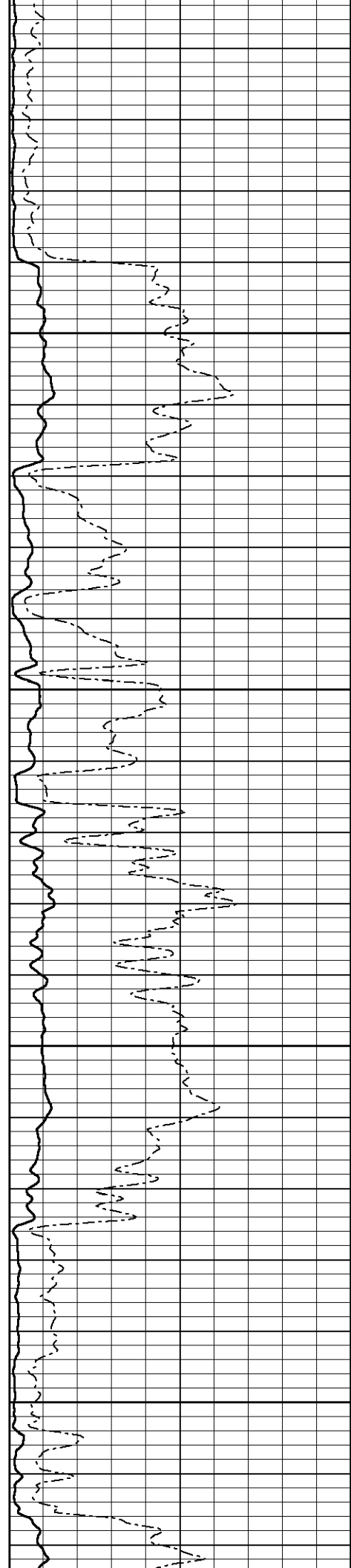


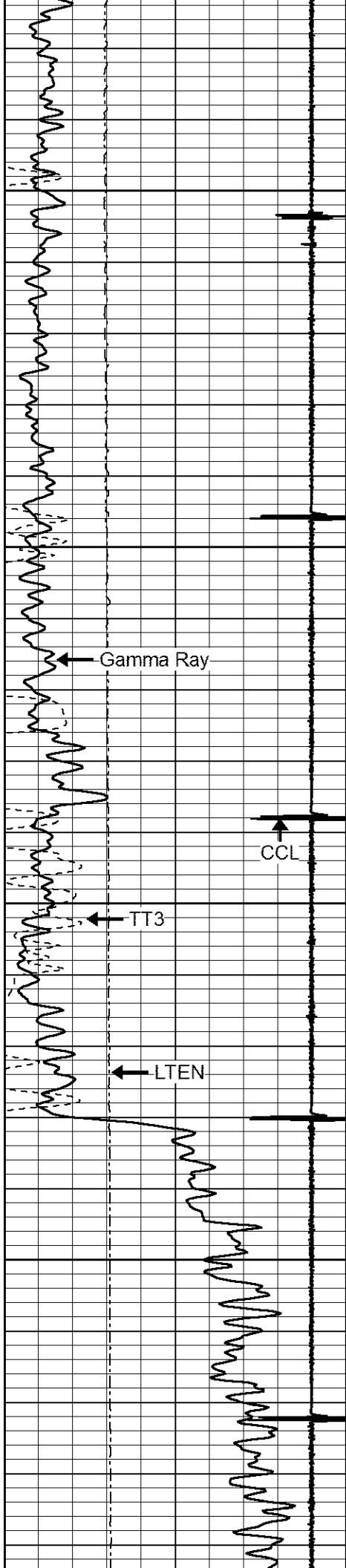
2200

2250

2300

2350





2400

2450

2500

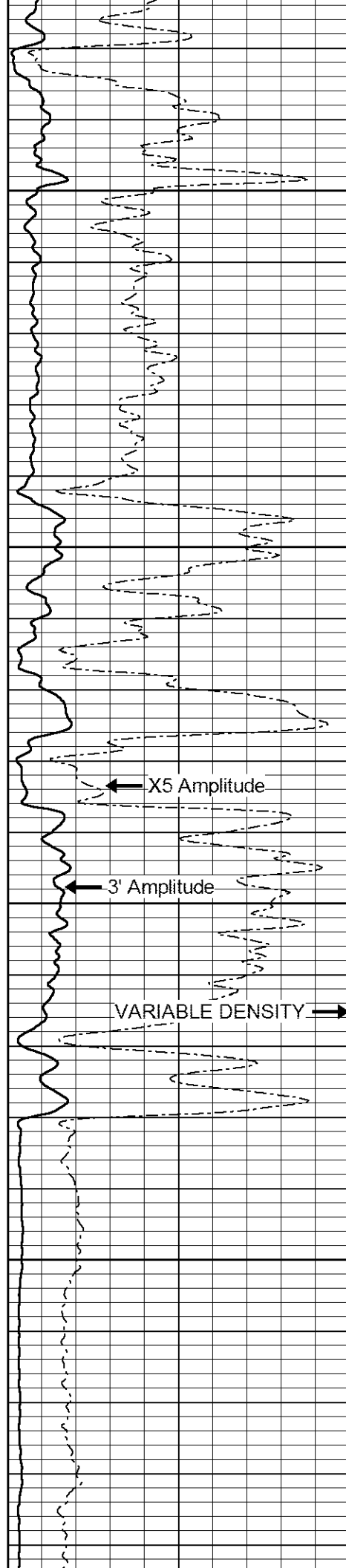
2550

Gamma Ray

CCL

TT3

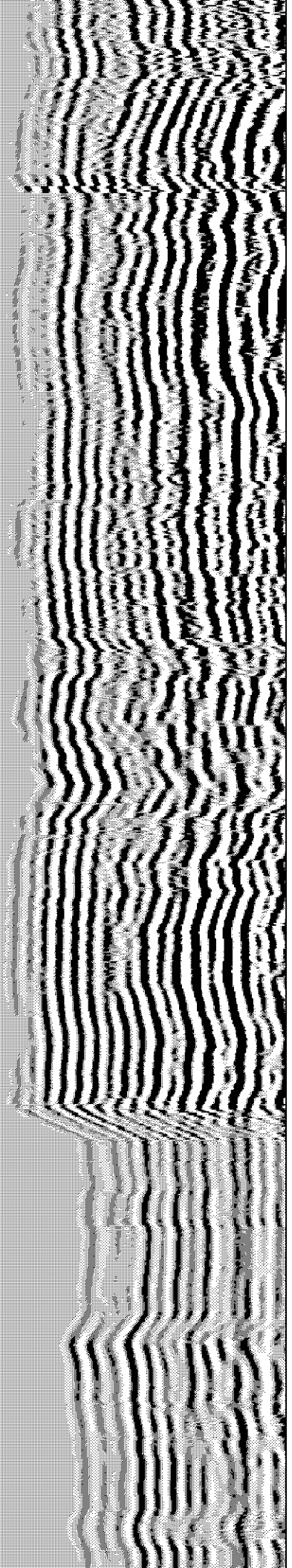
LTEN

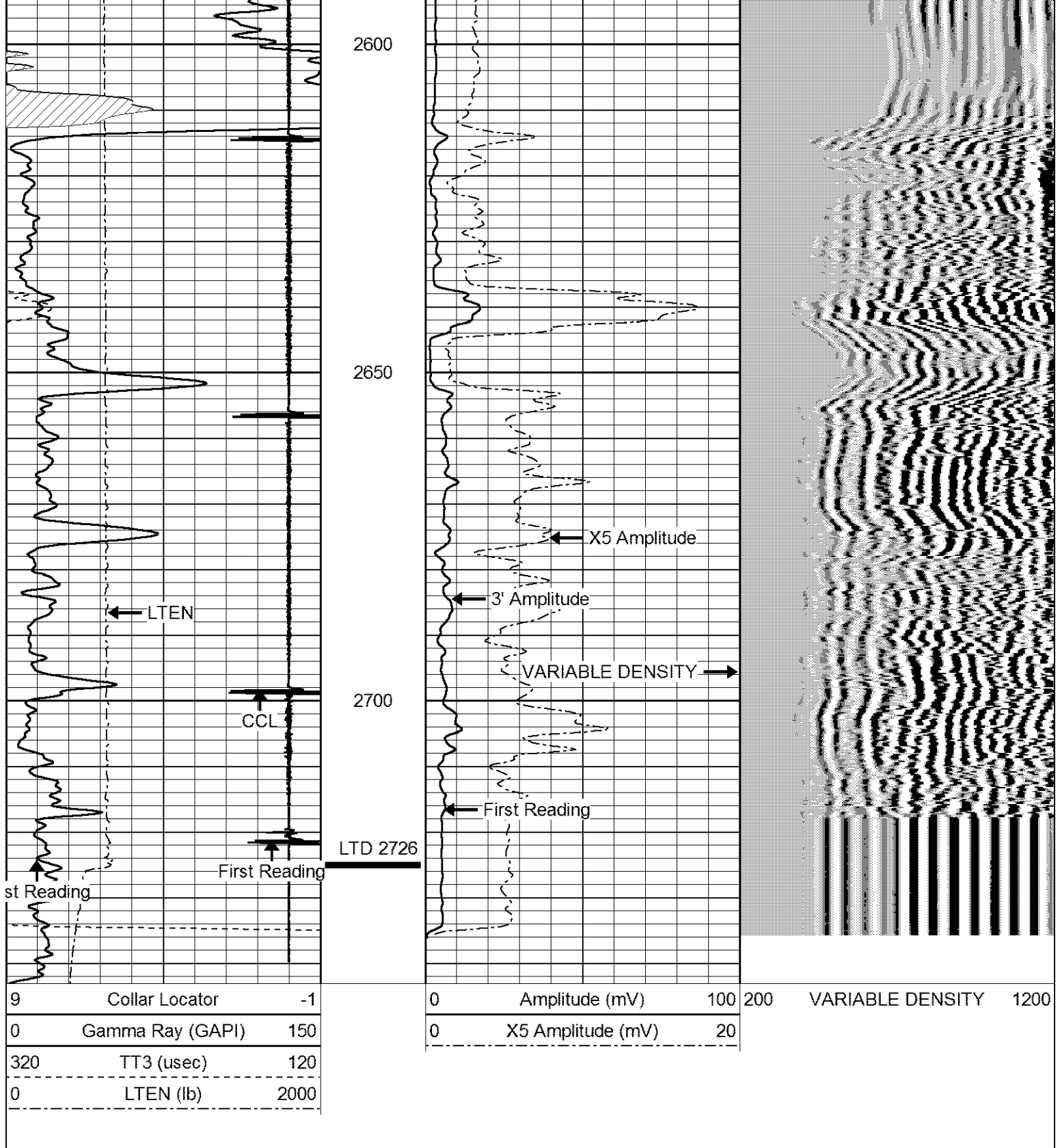


X5 Amplitude

3' Amplitude

VARIABLE DENSITY





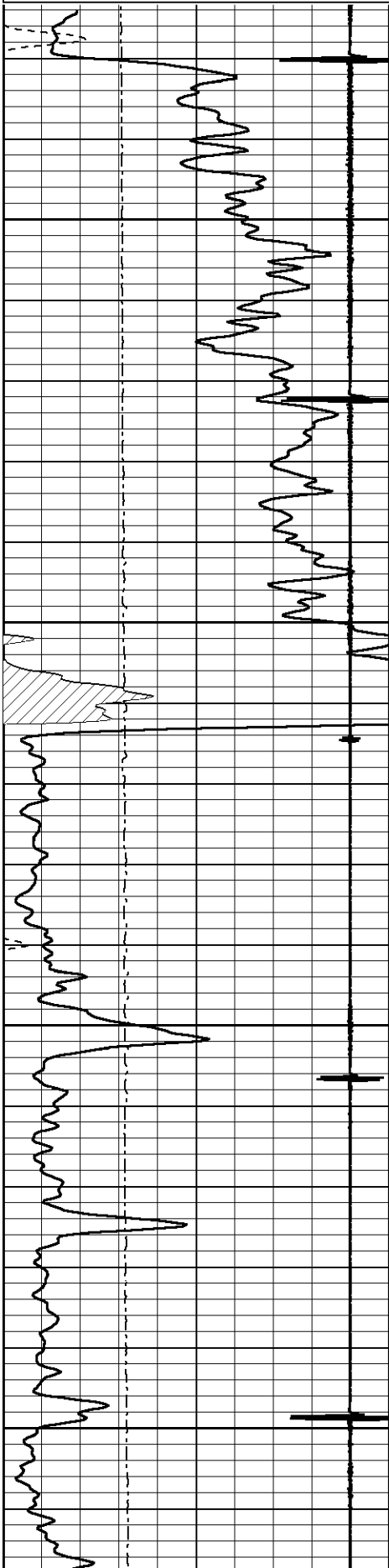
REPEAT SECTION

Database File: burkettd40.db
 Dataset Pathname: pass2
 Presentation Format: cbl02
 Dataset Creation: Tue Dec 09 08:22:50 2014 by Log 7.0 B1
 Charted by: Depth in Feet scaled 1:240

9	Collar Locator	-1
0	Gamma Ray (GAPI)	150
320	TT3 (usec)	120
0	LTEN (lb)	2000

0	Amplitude (mV)	100
0	X5 Amplitude (mV)	20

200 VARIABLE DENSITY 1200

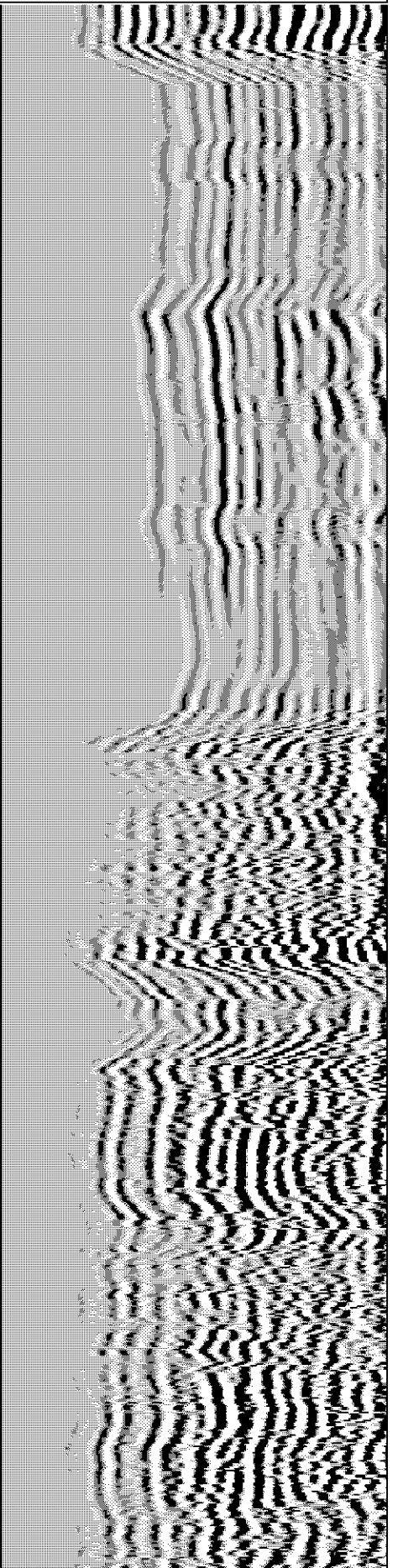
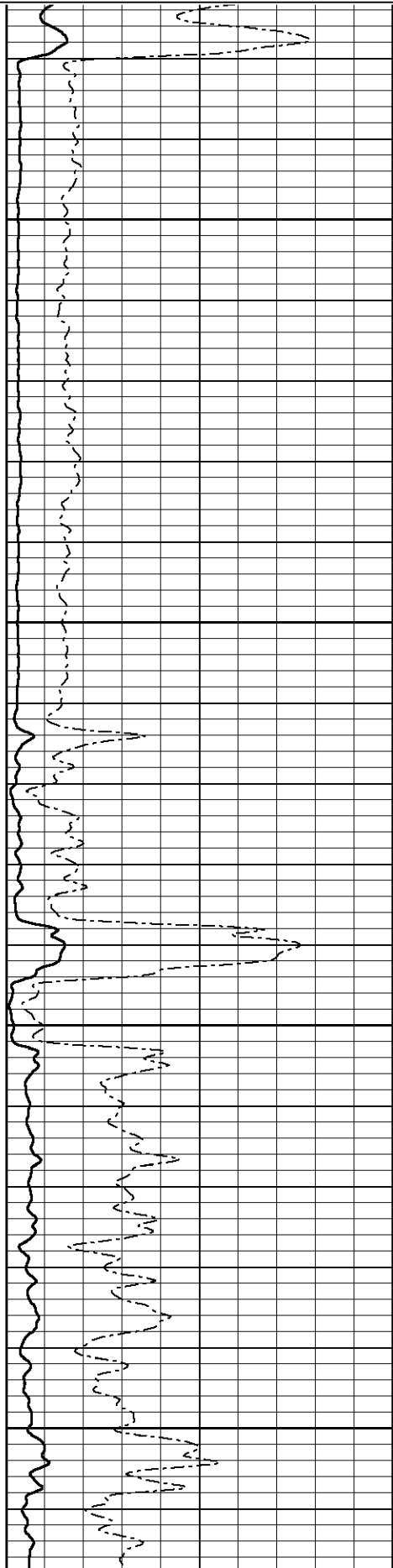


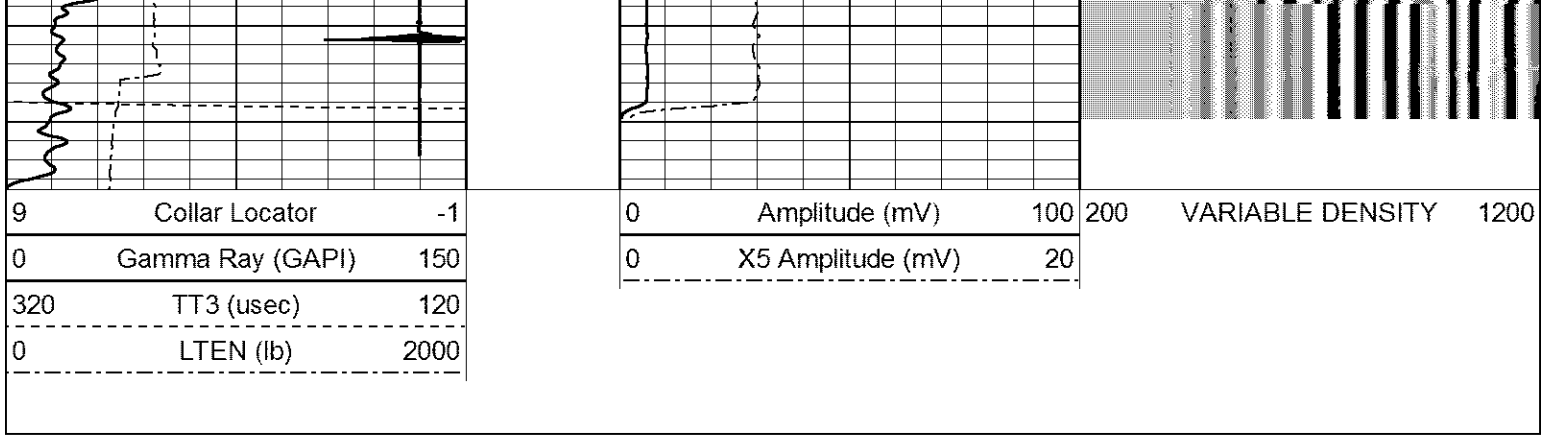
2550

2600

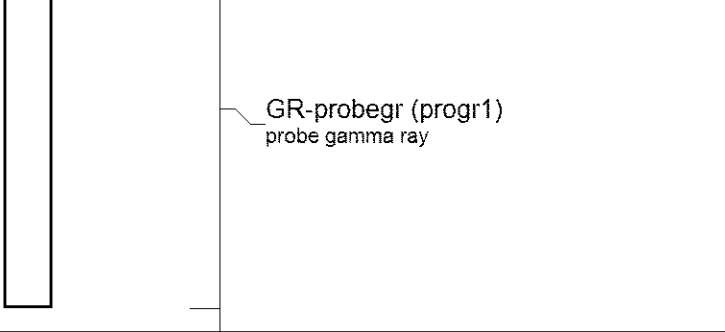
2650

2700





Sensor	Offset (ft)	Schematic	Description	Len (ft)	OD (in)	Wt (lb)
			STNDRD Standard Cable Head	1.00	1.69	10.00
WVF3	8.76		CBL-probecbl (probecbl1) probe cbl	8.75	2.75	92.00
WVF5	7.76					
CCL	3.69		CCL-probe (ccpr) probe ccl	1.55	2.75	30.00

GR	0.90			3.02	2.75	20.00
----	------	--	--	------	------	-------

<p>Dataset: burkettd40.db: field/well/run1/pass3 Total Length: 14.32 ft Total Weight: 152.00 lb O.D. 2.75 in</p>	
---	--