



MIDWEST SURVEYS
 LOGGING - PERFORATING - CONSULTING SERVICES
 P.O. Box 68, Osawatomie, KS 66084
 913.735.2128

GAMMA RAY / NEUTRON / CCL

File No. Company Lakeshore Operating, LLC.
 Well Fuller No. LO-50
 Field Vernon
 County Woodson State Kansas

Location 4420' FSL & 865' FEL
 NE-SW-NE-NE

Sec. 33 Twp. 23S Rge. 16E
 Permanent Datum GL Elevation 1067'
 Log Measured From GL D.F. NA
 Drilling Measured From GL G.L. 1067'

Date 12-02-2014
 Run Number One
 Depth Driller 1115.0
 Bottom Logged Interval 1098.2
 Top Log Interval 200.0
 Fluid Level Full

Type Fluid Water
 Density / Viscosity NA
 Salinity - PPM Cl NA
 Max Recorded Temp NA

Estimated Cement Top 0.0
 Equipment No. Location
 Recorded By Gary Windisch
 Witnessed By Wesley Ketrham

BORE-HOLE RECORD
 RUN No. BIT FROM TO SIZE WGT FROM TO
 One 9.875" 40.0 1115.0 7.00" 17.0# 0.0 40.0
 Two 5.875" 40.0 1115.0 2.875" 6.5# 0.0 1104.0

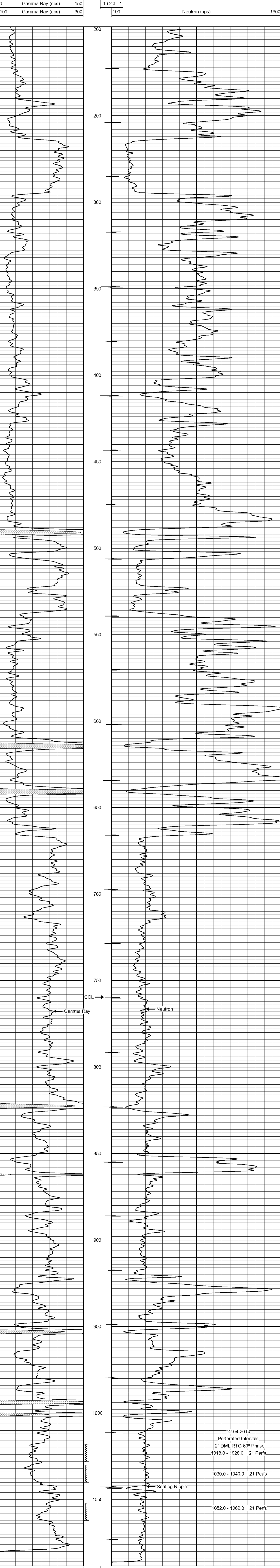
<<< Fold Here >>>

All interpretations are opinions based on inferences from electrical or other measurements and we cannot and do not guarantee the accuracy or correctness of any interpretation, and we shall not, except in the case of gross or willful negligence on our part, be liable or responsible for any loss, costs, damages, or expenses incurred or sustained by anyone resulting from any interpretation made by any of our officers, agents or employees. These interpretations are also subject to our general terms and conditions set out in our current Price Schedule.

Comments

Drilling Contractor :
 Jackman Oilfield Services

Database File: fuller50lo.db
 Dataset Pathname: pass1
 Presentation Format: gr-n-ccl
 Dataset Creation: Tue Dec 02 13:48:21 2014 by Log SCH 111116
 Charted by: Depth in Feet scaled 1:240



12-04-2014
 Perforated Intervals
 2" DML RTG 60° Phase
 1018.0 - 1028.0 21 Perfs
 1030.0 - 1040.0 21 Perfs
 1052.0 - 1062.0 21 Perfs