

5 INCH MD-Gamma Ray Log (Scale: 5":100' (10'))

Company: Tapstone Energy
 Well: Mangen 36-34-10 #1H
 Field: Mississippi Lime
 Well ID: 15-007-24248-01-00
 Job Number: LKS6115914

State: KS
 County: Barber
 Country: USA

Elev KB: 22' + 1,301' = 1,323'
 Elev DF: 1,323'
 Elev GL: 1,301'

Location: Sec. 36 T34S, R10W
 Operator 1: Ken Mitchell
 Operator 2: Lance Flores
 Comment 1: LAT: 37° 3' 0.999 N / LONG: 98° 21' 47.246 W
 Comment 2: Y: 139619.00 / X: 2039949.00
 Comment 3: Mud Density (lb/bbl): 8.8 / Funnel Viscosity (sec/qt): 27
 Comment 4: Flowline Temp (DegF): 88° / HTHP Filtrate (ml/30 min): 99
 Comment 5: Max Temp (DegF): 156° (NAD 1927) Gamma Ray in Reference to Elev KB (Kansas South 1502)

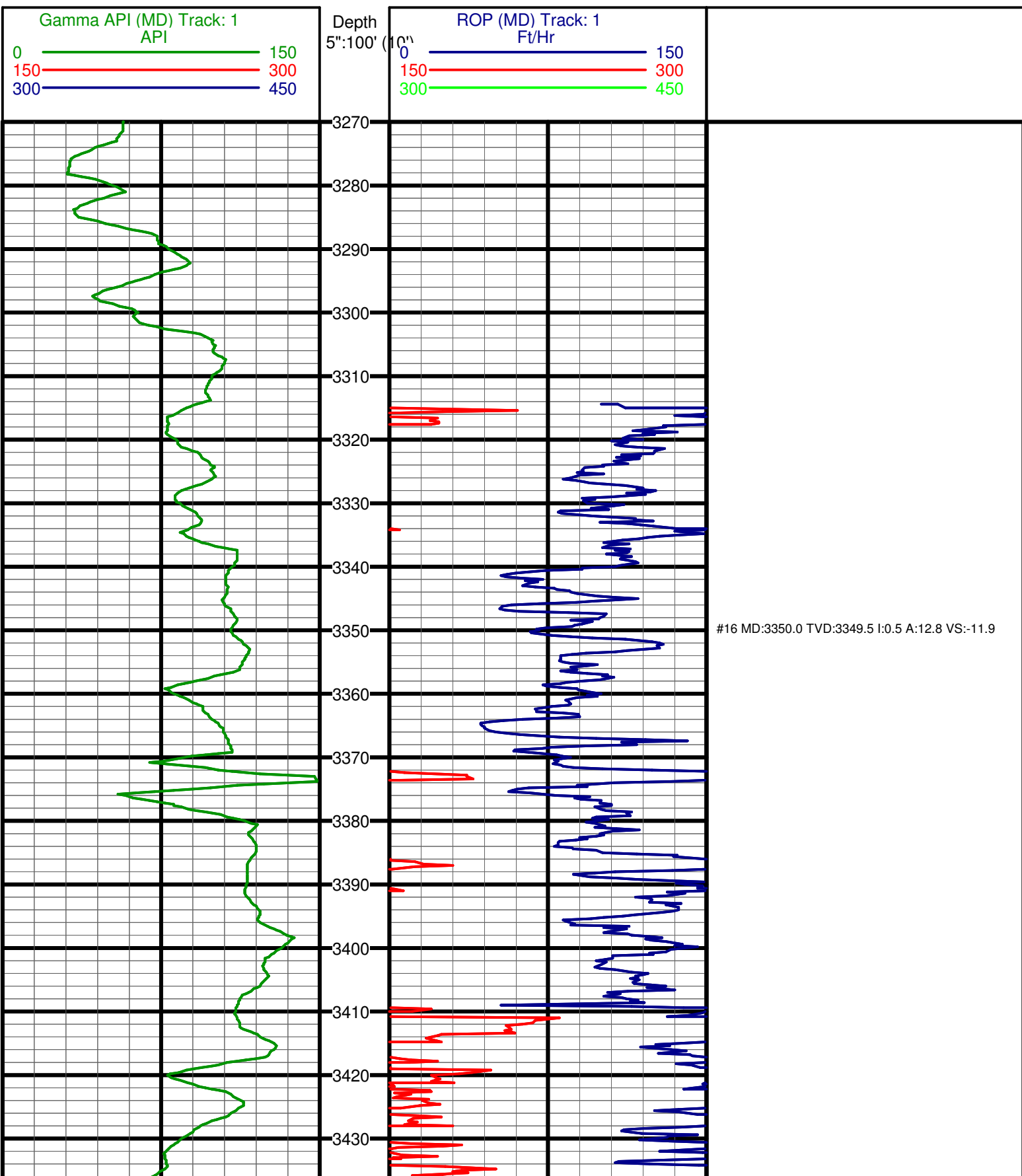
Hole Data		Casing Record			
Size	From	To	Size	From	To
12 1/4	0'	806'	9 5/8	0'	806'
8 3/4	806'	5,159'	7"	0'	5,157'
6 1/8	5,159'	9,100'			

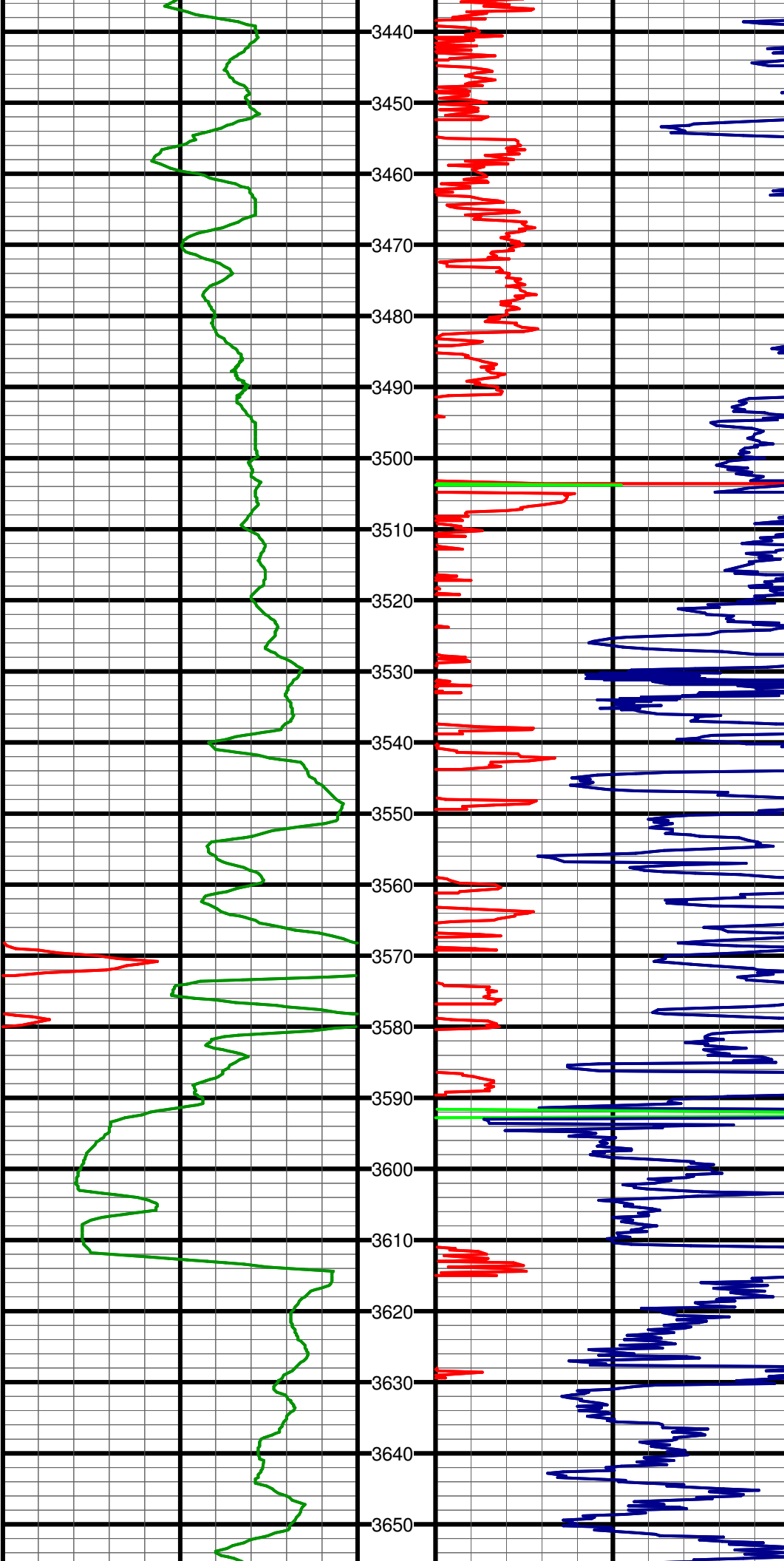
Tool Run Data		Run #1	Run #2	Run #3	Run #4	Run #5
Tool S/N	2581	3024	3024	2581	2581	2581
Cal Factor	4.752	2.75	2.75	2.75	2.75	2.75
Gamma Offset	44'	38'	38'	38'	38'	38'
Start Depth	3,270'	5,113'	6,064'	7,432'	7,762'	7,762'
Start Date	12/06/2014	12/10/2014	12/11/2014	12/13/2014	12/14/2014	12/14/2014
Start Time	11:12	00:24	09:00	17:35	16:21	16:21
End Depth	5,113'	6,064'	7,432'	7,762'	8,453'	8,453'
End Date	12/08/2014	12/11/2014	12/13/2014	12/14/2014	12/15/2014	12/15/2014
End Time	12:01	00:20	6:56	8:29	14:45	14:45

Tool Run Data	Run #6	Run #7	Run #8	Run #9	Run #10
Tool S/N	2581				
Cal Factor	2.75				
Offset	38'				
Start Depth	8,453'				
Start Date	12/16/2014				
Start Time	02:27				
End Depth	9,062'				
End Date	12/16/2014				
End Time	19:07				

Tool Run Data	Run #11	Run #12	Run #13	Run #14	Run #15
Tool S/N					
Cal Factor					
Offset					
Start Depth					
Start Date					
Start Time					
End Depth					

End Date					
End Time					

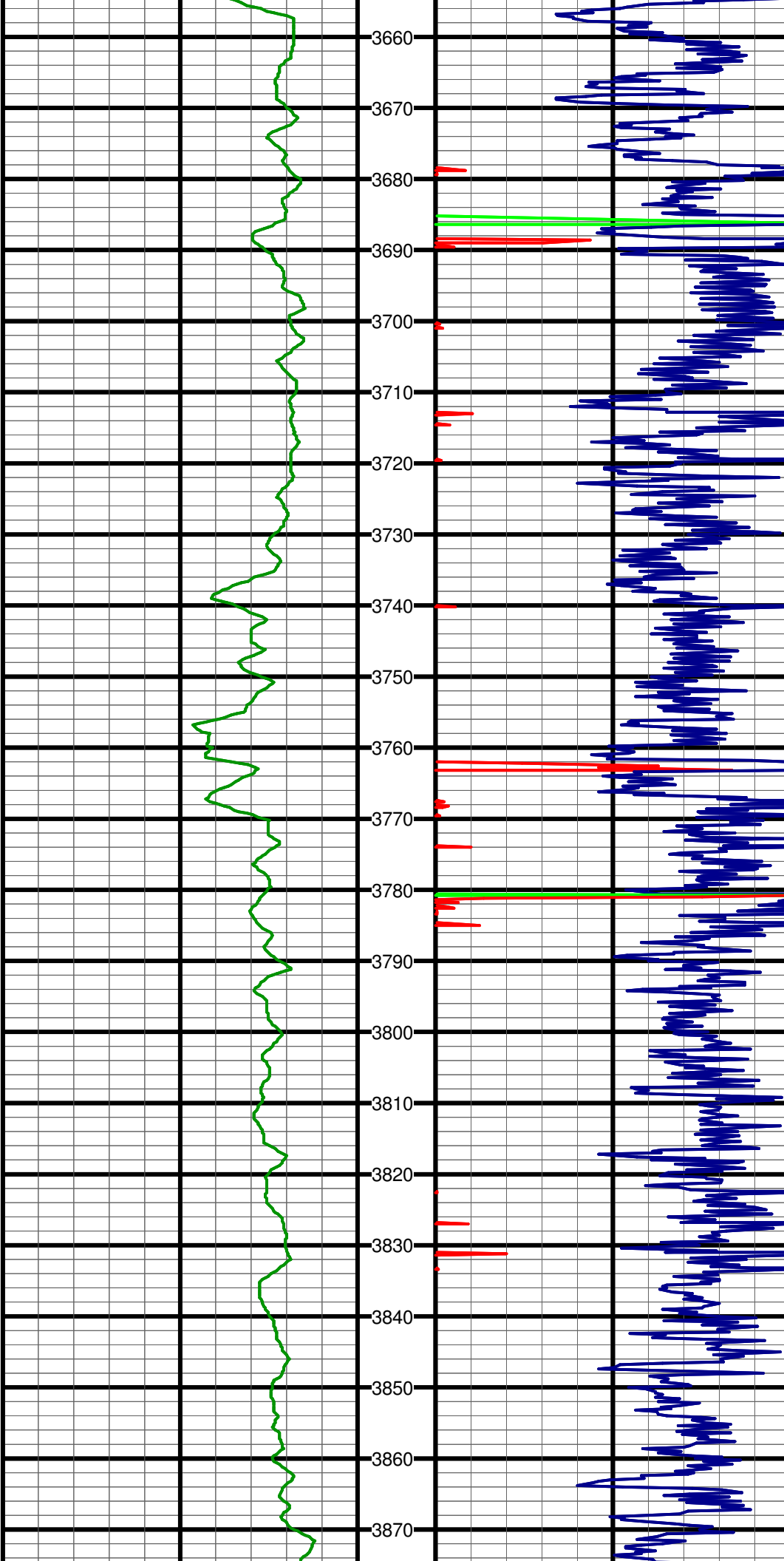




#17 MD:3443.0 TVD:3442.5 I:0.7 A:12.2 VS:-12.8

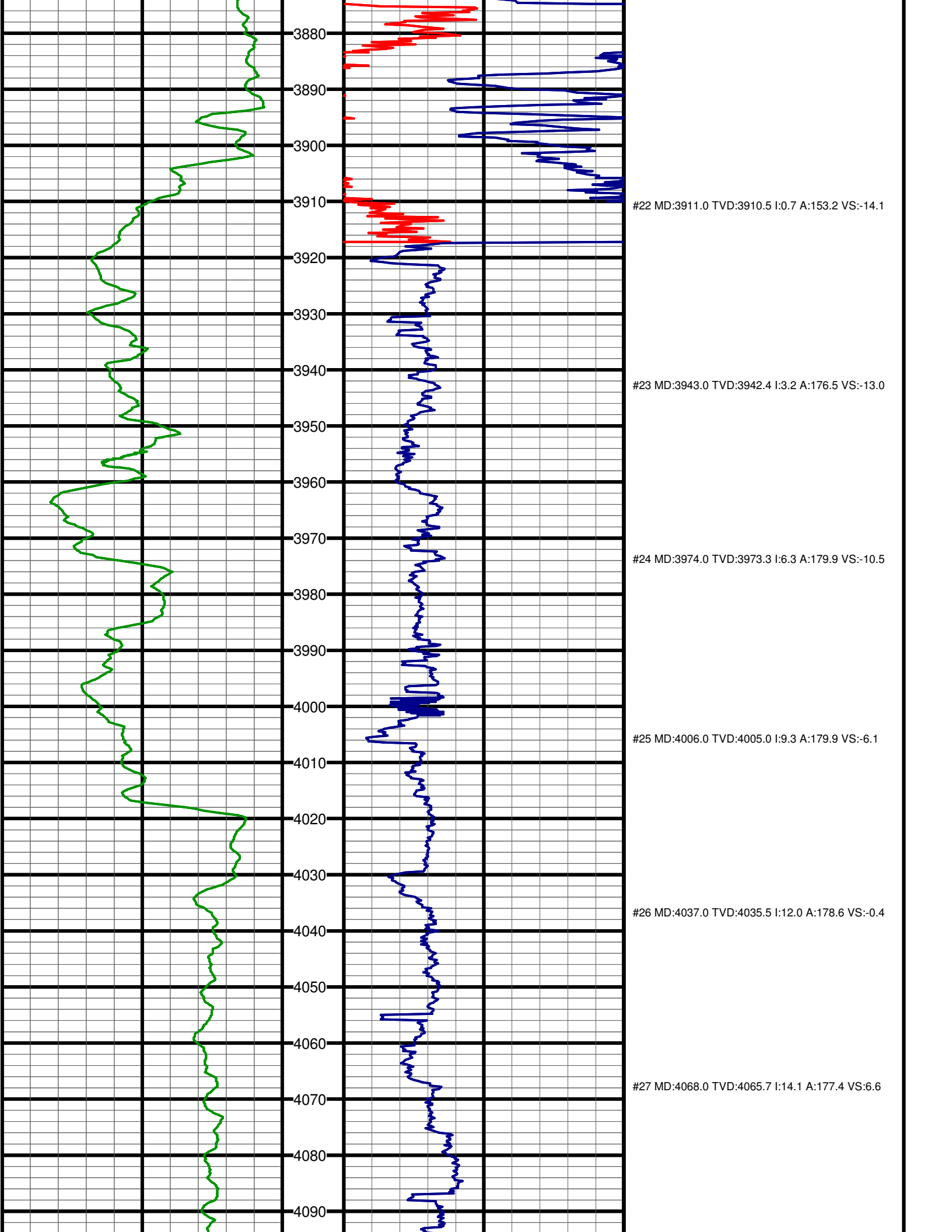
#18 MD:3536.0 TVD:3535.5 I:0.3 A:26.5 VS:-13.6

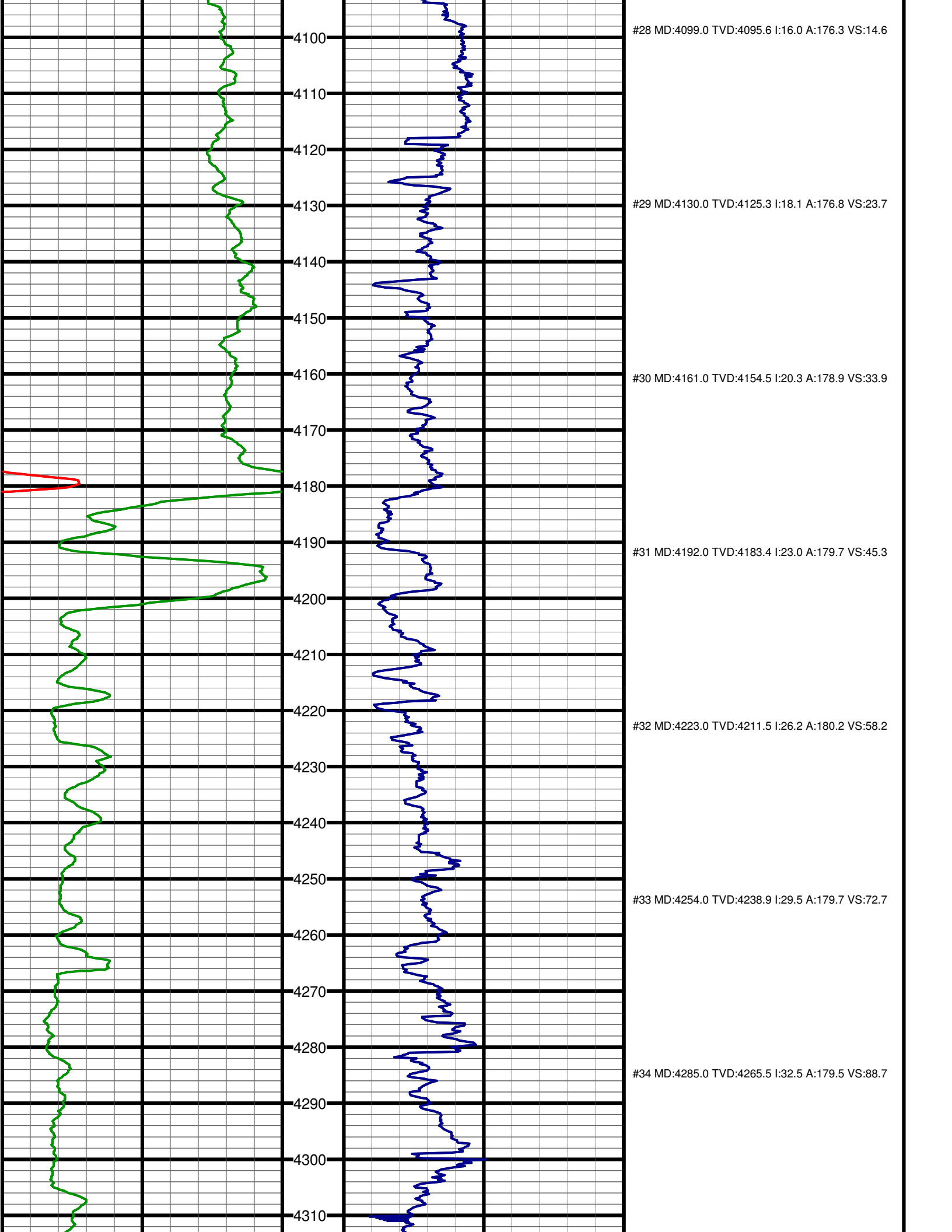
#19 MD:3629.0 TVD:3628.5 I:0.2 A:358.8 VS:-14.0

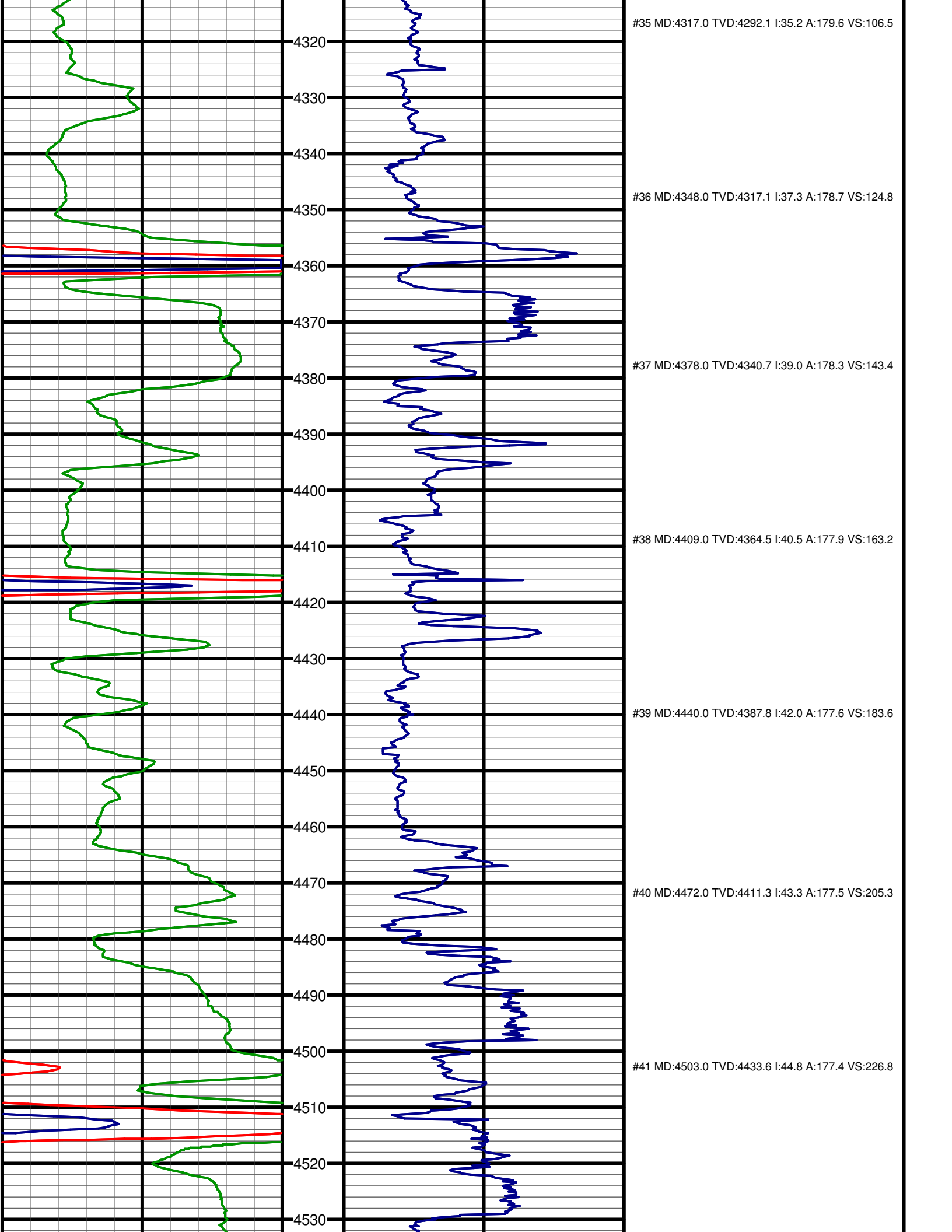


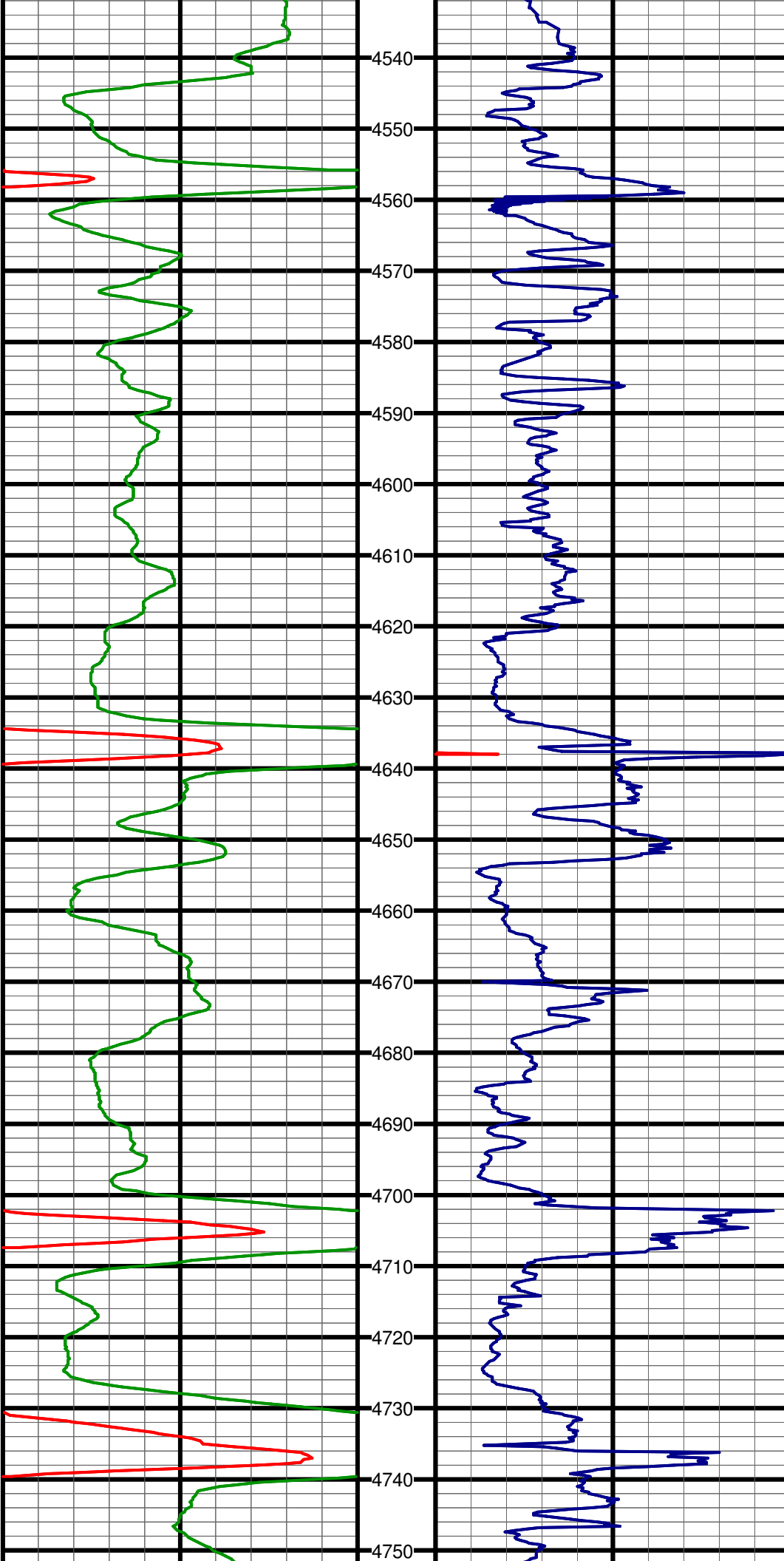
#20 MD:3723.0 TVD:3722.5 I:0.3 A:18.0 VS:-14.4

#21 MD:3817.0 TVD:3816.5 I:0.0 A:279.3 VS:-14.6









#42 MD:4534.0 TVD:4455.2 I:46.8 A:176.7 VS:249.0

#43 MD:4565.0 TVD:4476.1 I:48.8 A:176.4 VS:271.9

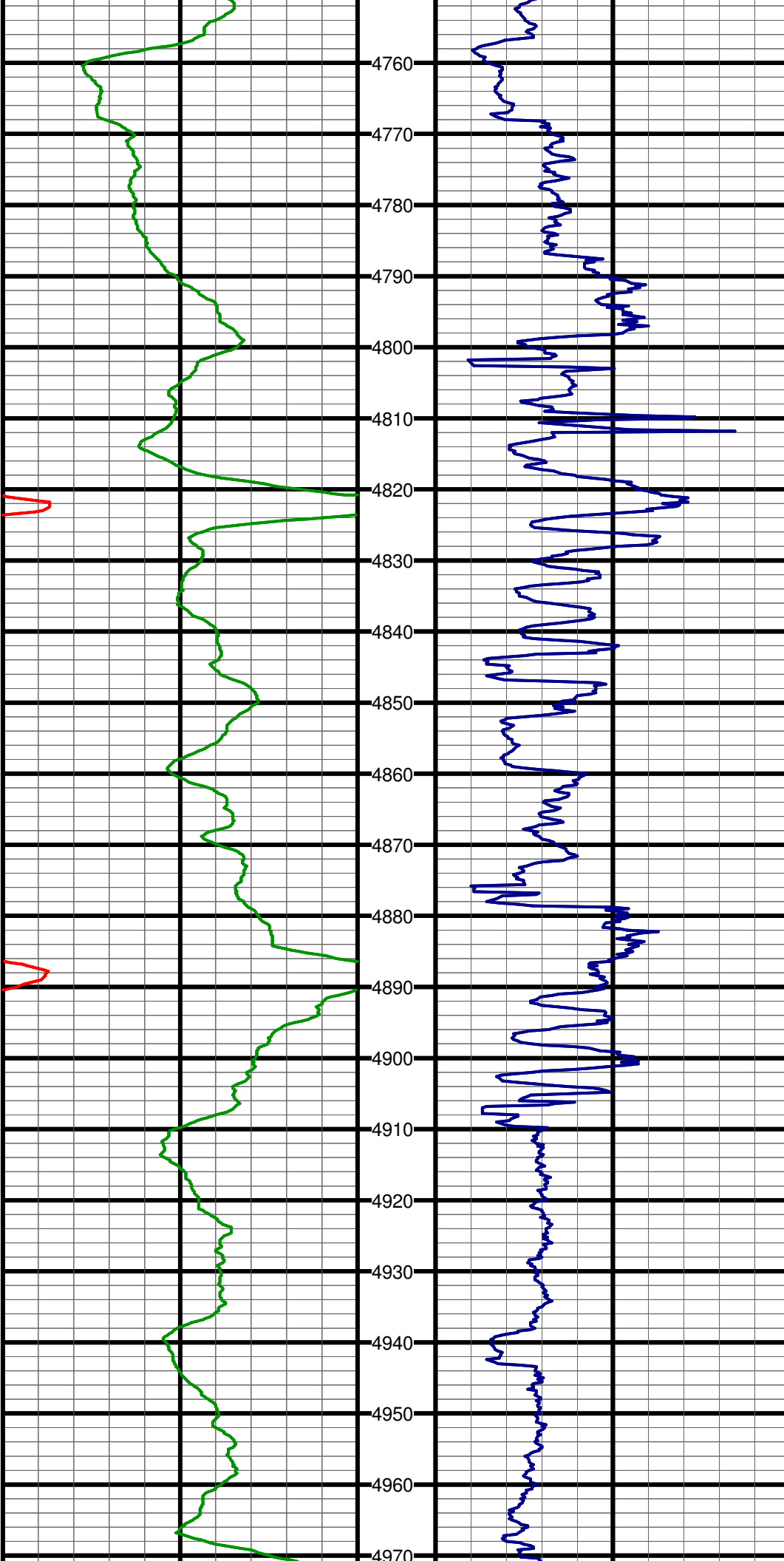
#44 MD:4596.0 TVD:4496.0 I:51.1 A:176.8 VS:295.6

#45 MD:4627.0 TVD:4515.1 I:53.1 A:177.1 VS:320.0

#46 MD:4659.0 TVD:4533.8 I:55.1 A:177.7 VS:345.9

#47 MD:4691.0 TVD:4551.6 I:57.5 A:178.7 VS:372.5

#48 MD:4723.0 TVD:4568.1 I:60.2 A:178.5 VS:399.9



#49 MD:4755.0 TVD:4583.4 I:62.9 A:178.9 VS:428.0

#50 MD:4786.0 TVD:4597.0 I:64.7 A:179.2 VS:455.8

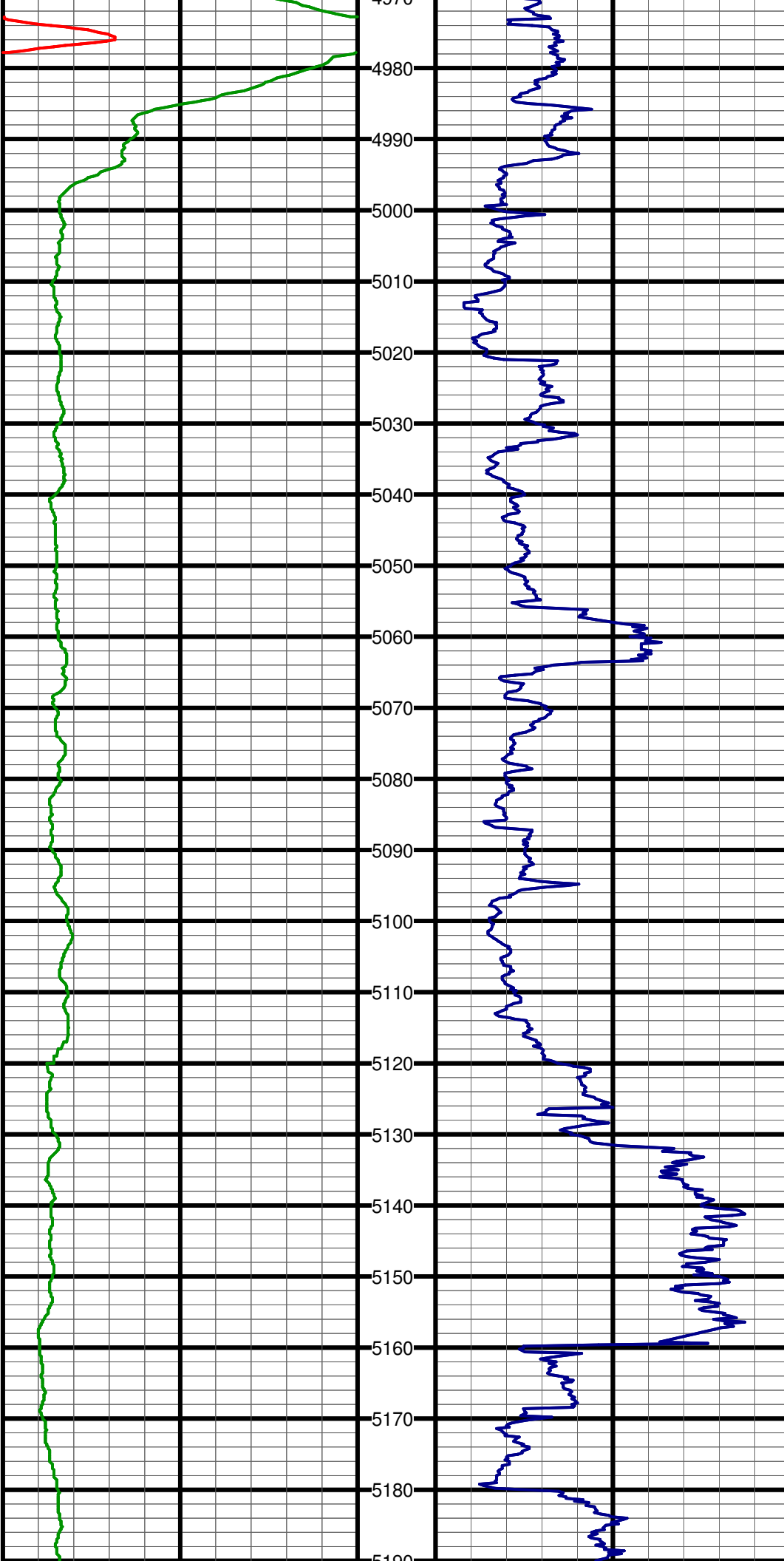
#51 MD:4817.0 TVD:4610.1 I:65.3 A:179.6 VS:483.9

#52 MD:4849.0 TVD:4623.4 I:65.8 A:178.9 VS:513.1

#53 MD:4881.0 TVD:4636.4 I:66.2 A:179.6 VS:542.3

#54 MD:4912.0 TVD:4648.8 I:66.6 A:179.5 VS:570.7

#55 MD:4943.0 TVD:4661.1 I:66.6 A:179.1 VS:599.2



#56 MD:4975.0 TVD:4673.9 I:66.2 A:178.6 VS:628.5

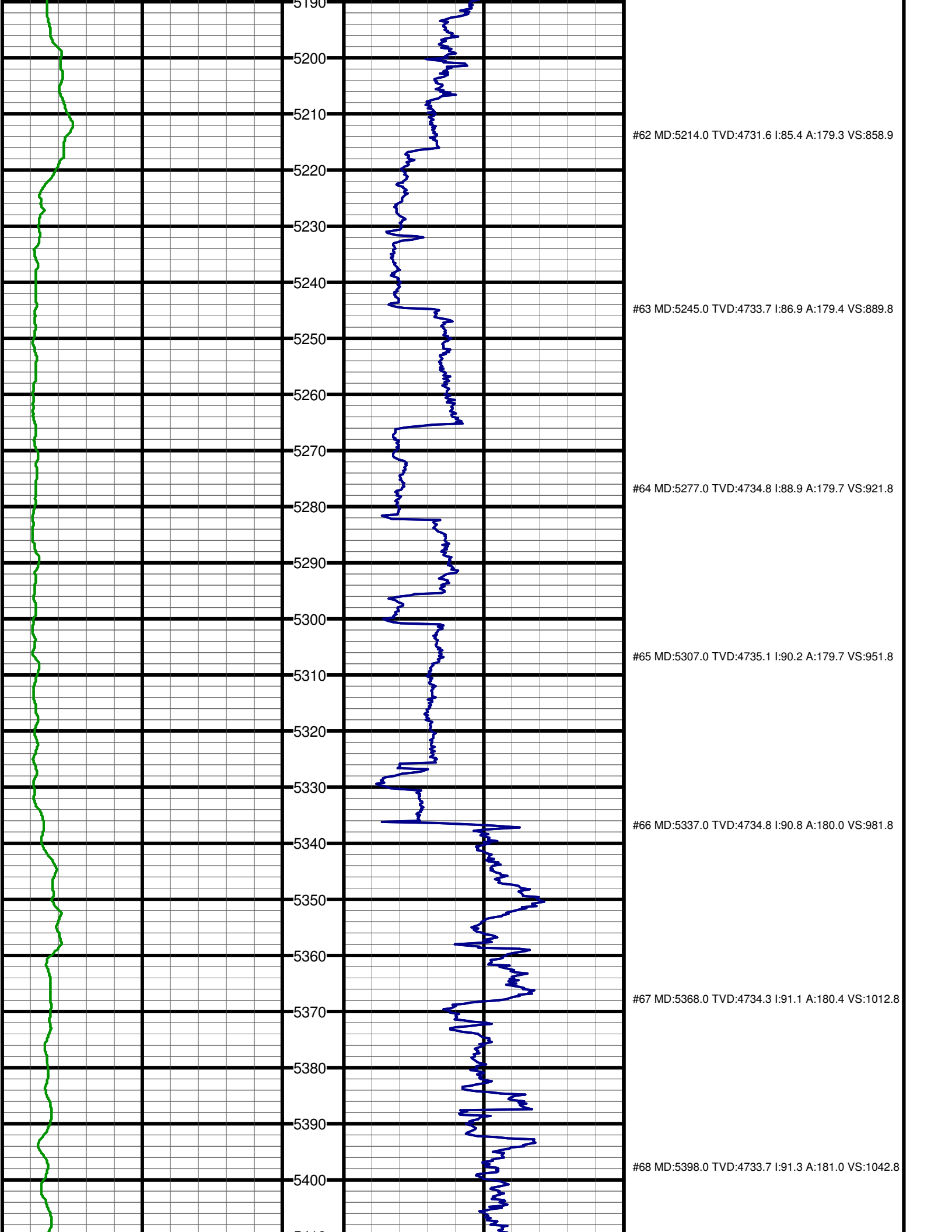
#57 MD:5007.0 TVD:4686.5 I:67.7 A:178.8 VS:657.9

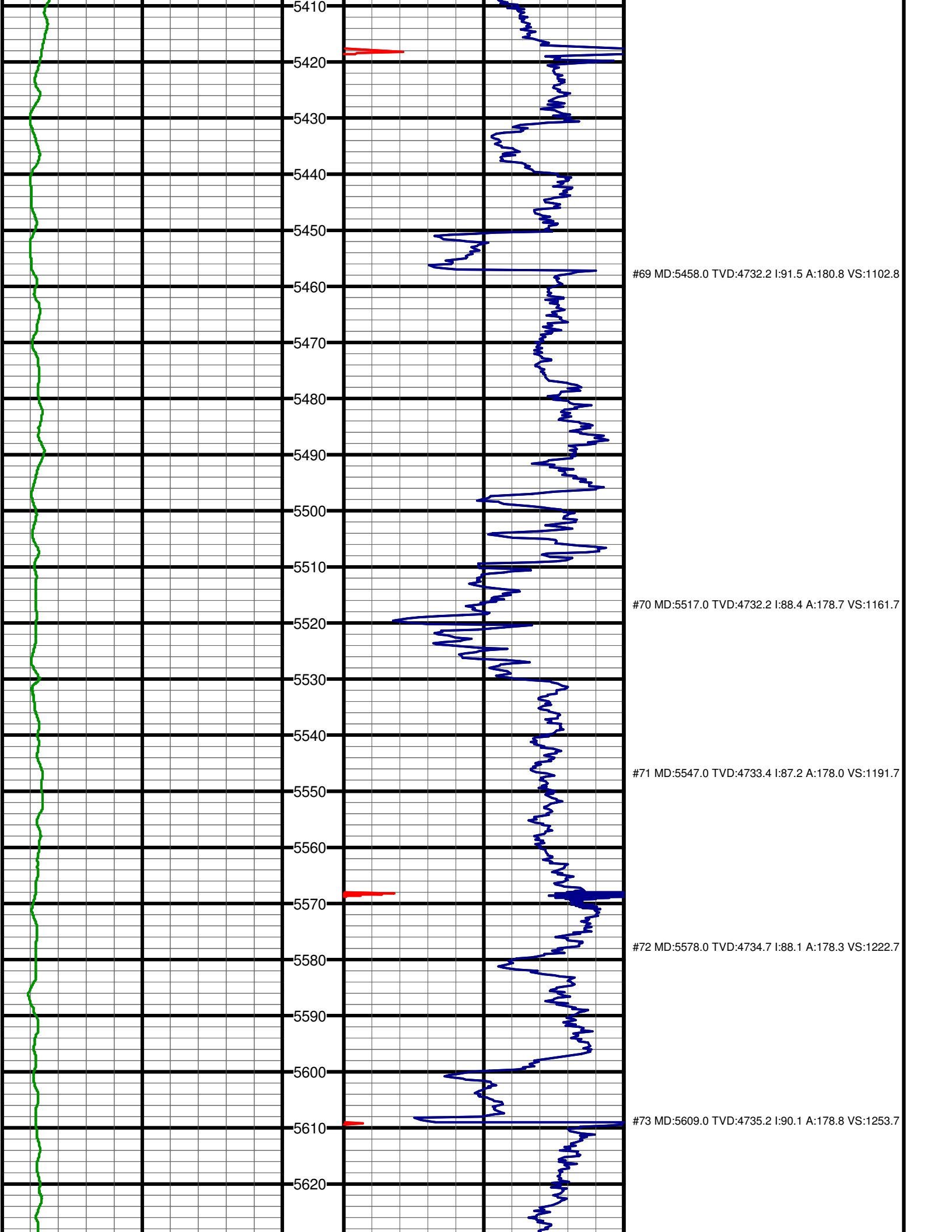
#58 MD:5039.0 TVD:4697.9 I:70.3 A:178.9 VS:687.8

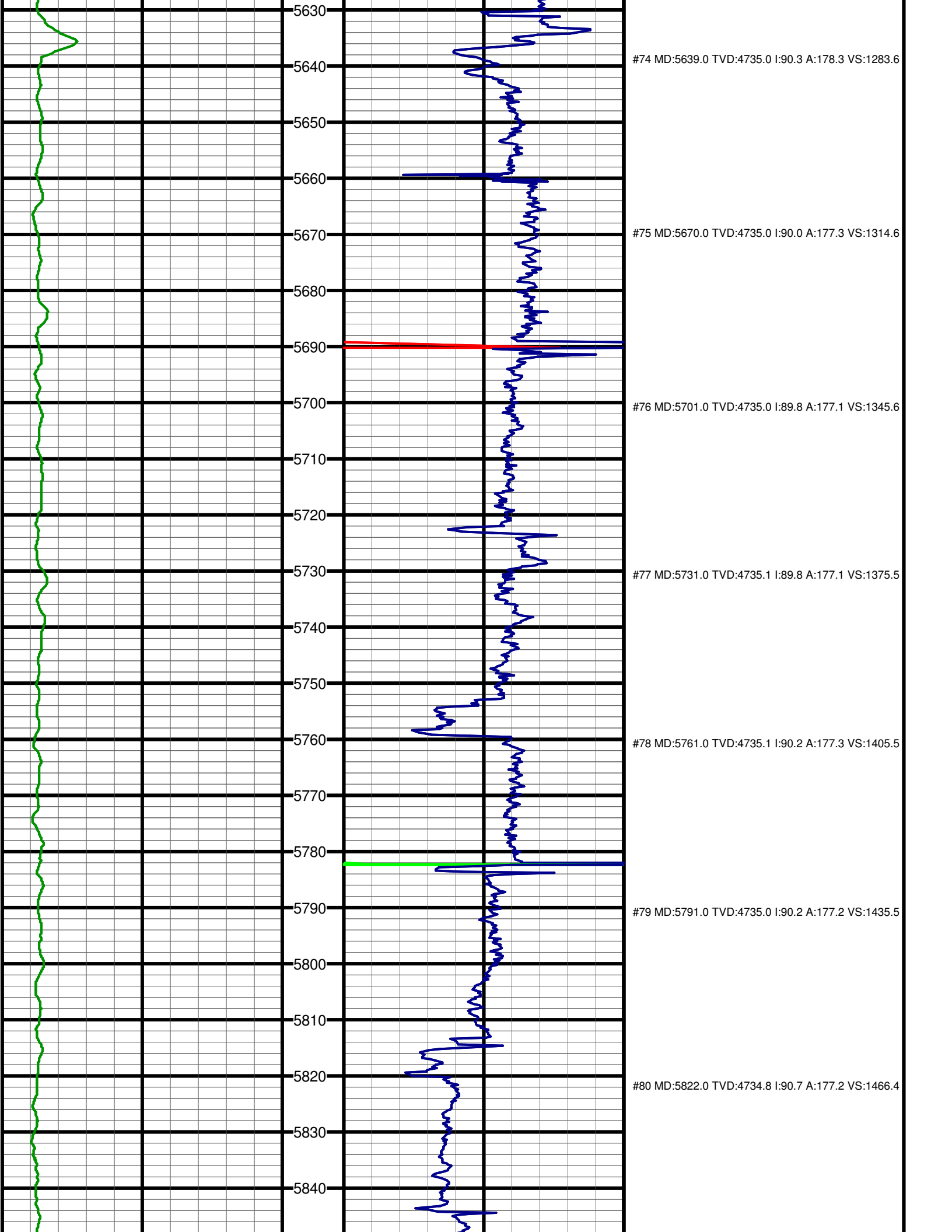
#59 MD:5071.0 TVD:4707.9 I:73.6 A:179.1 VS:718.2

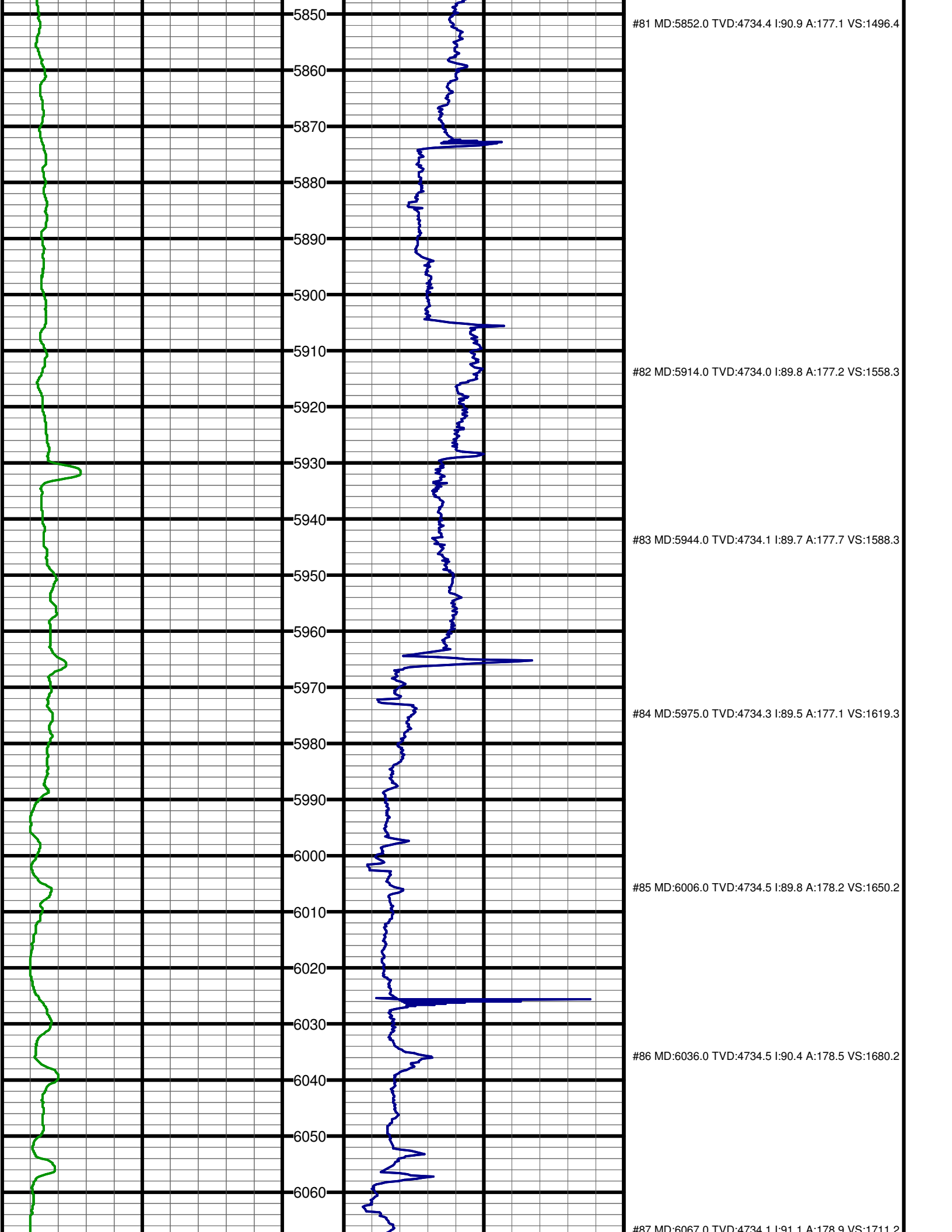
#60 MD:5103.0 TVD:4716.0 I:76.8 A:179.0 VS:749.1

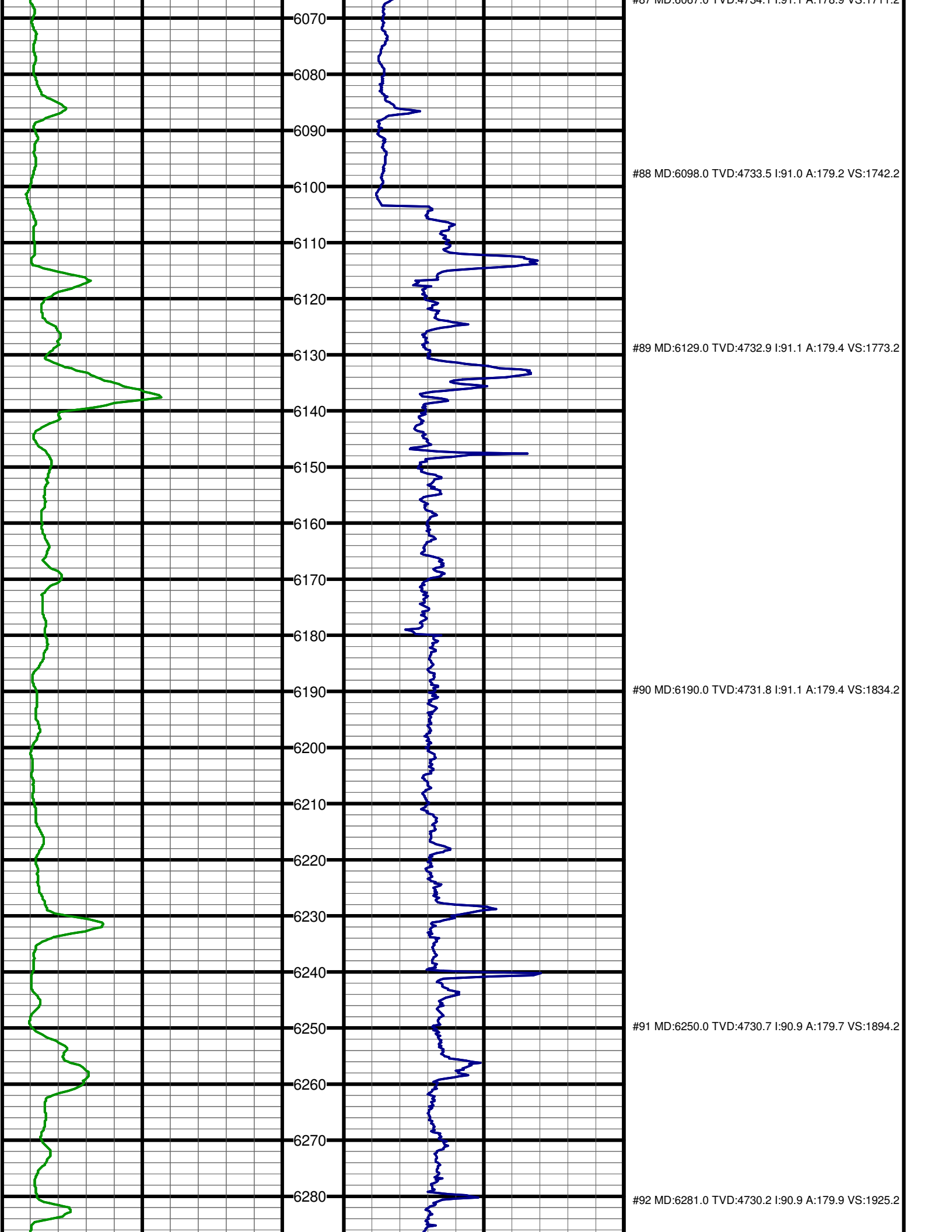
#61 MD:5182.0 TVD:4728.8 I:84.6 A:179.2 VS:827.0

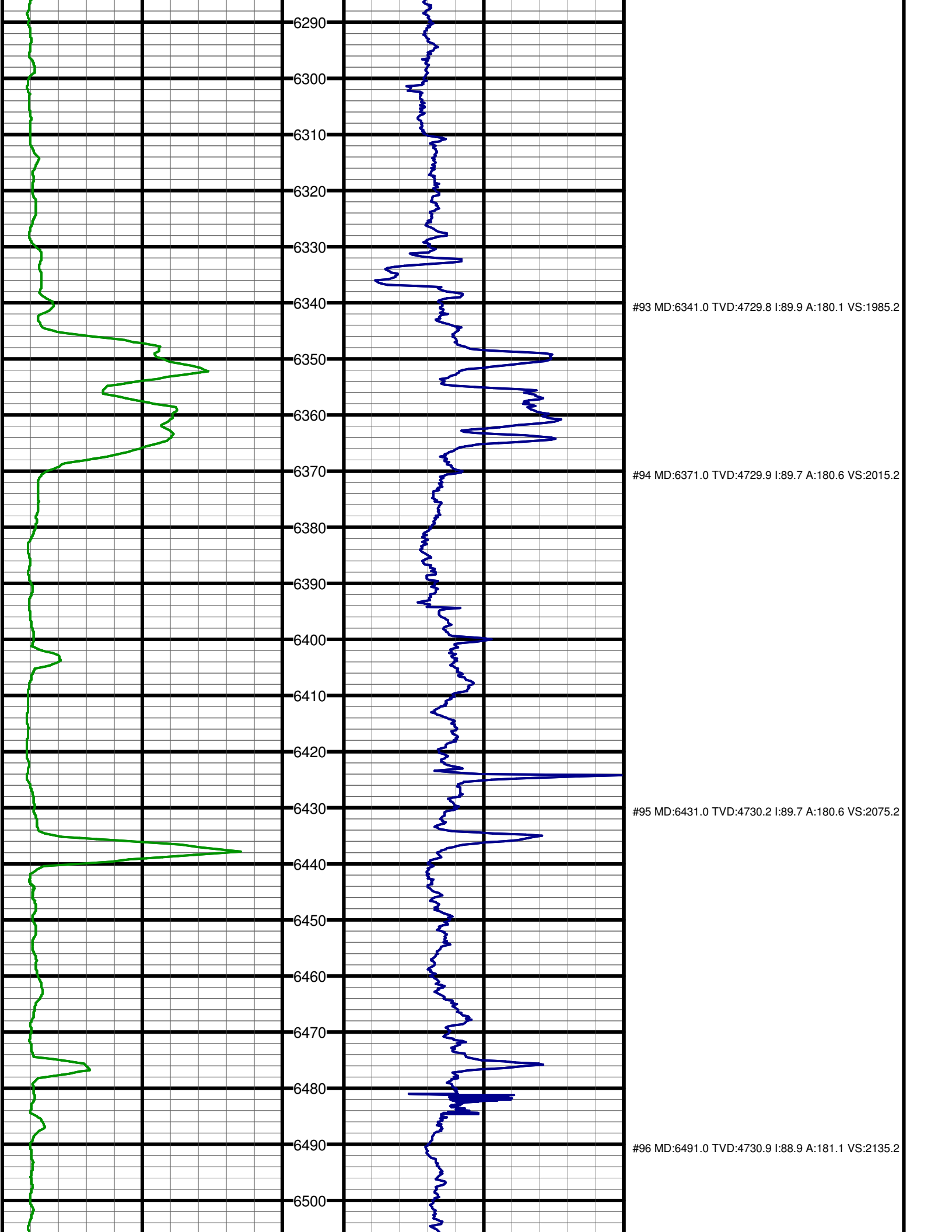


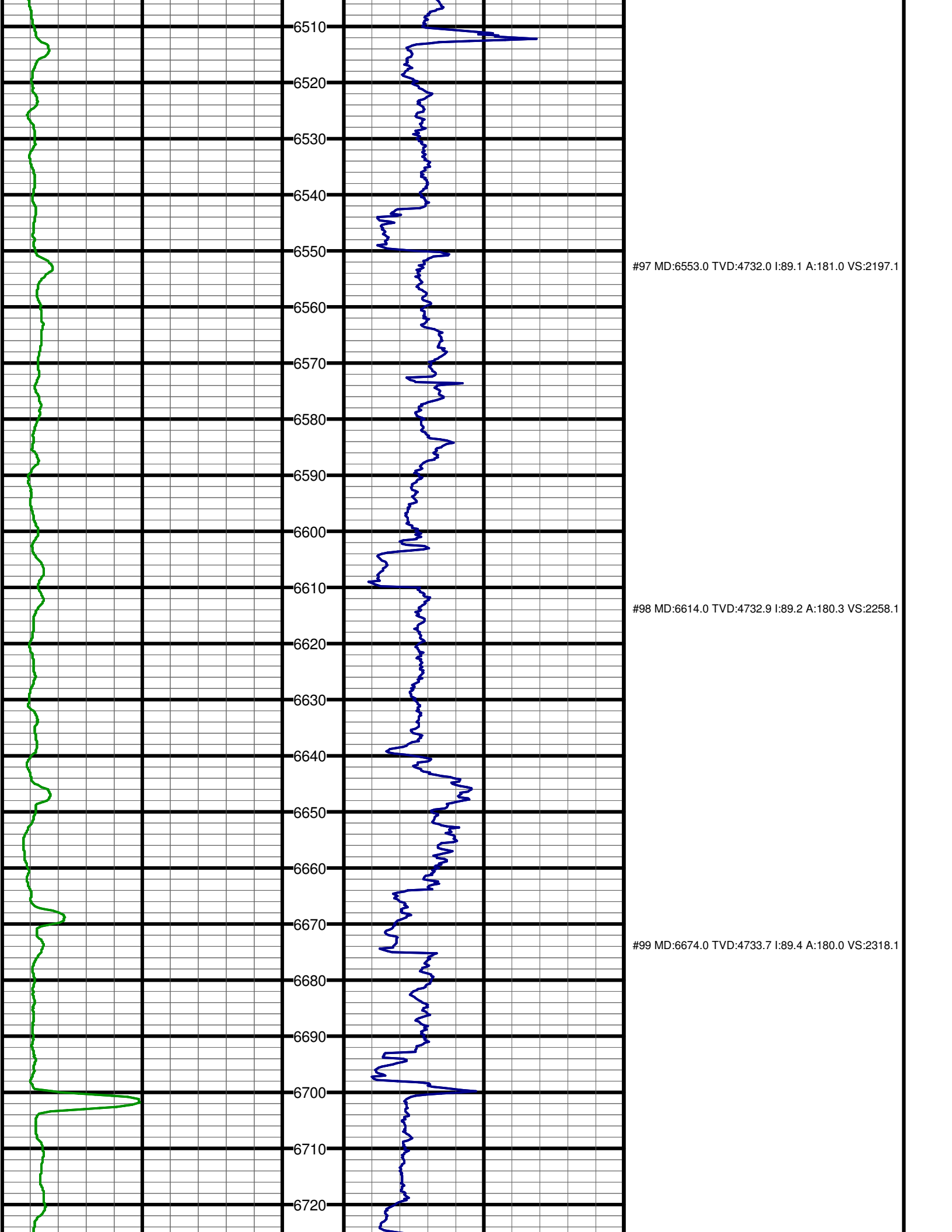












6510

6520

6530

6540

6550

#97 MD:6553.0 TVD:4732.0 I:89.1 A:181.0 VS:2197.1

6560

6570

6580

6590

6600

6610

#98 MD:6614.0 TVD:4732.9 I:89.2 A:180.3 VS:2258.1

6620

6630

6640

6650

6660

6670

#99 MD:6674.0 TVD:4733.7 I:89.4 A:180.0 VS:2318.1

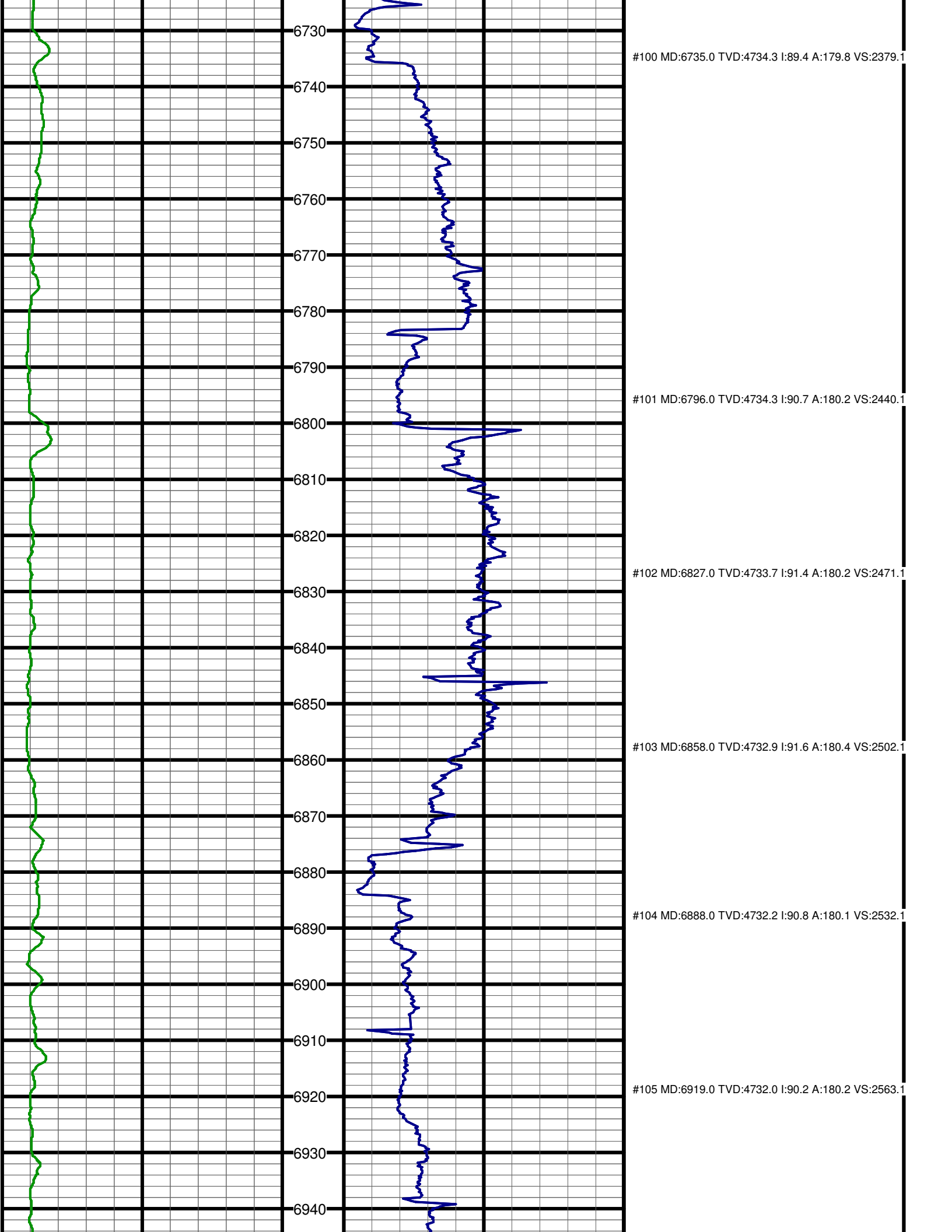
6680

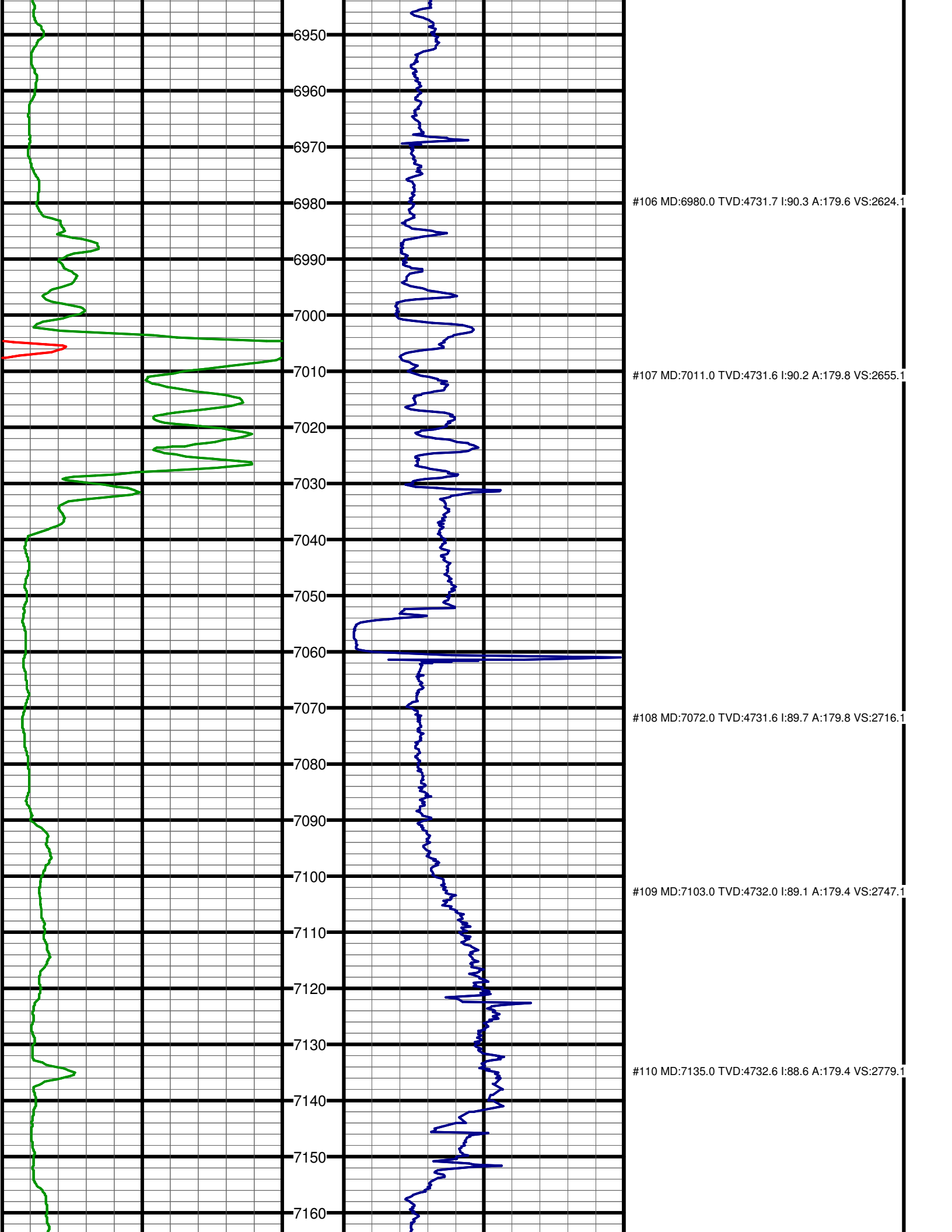
6690

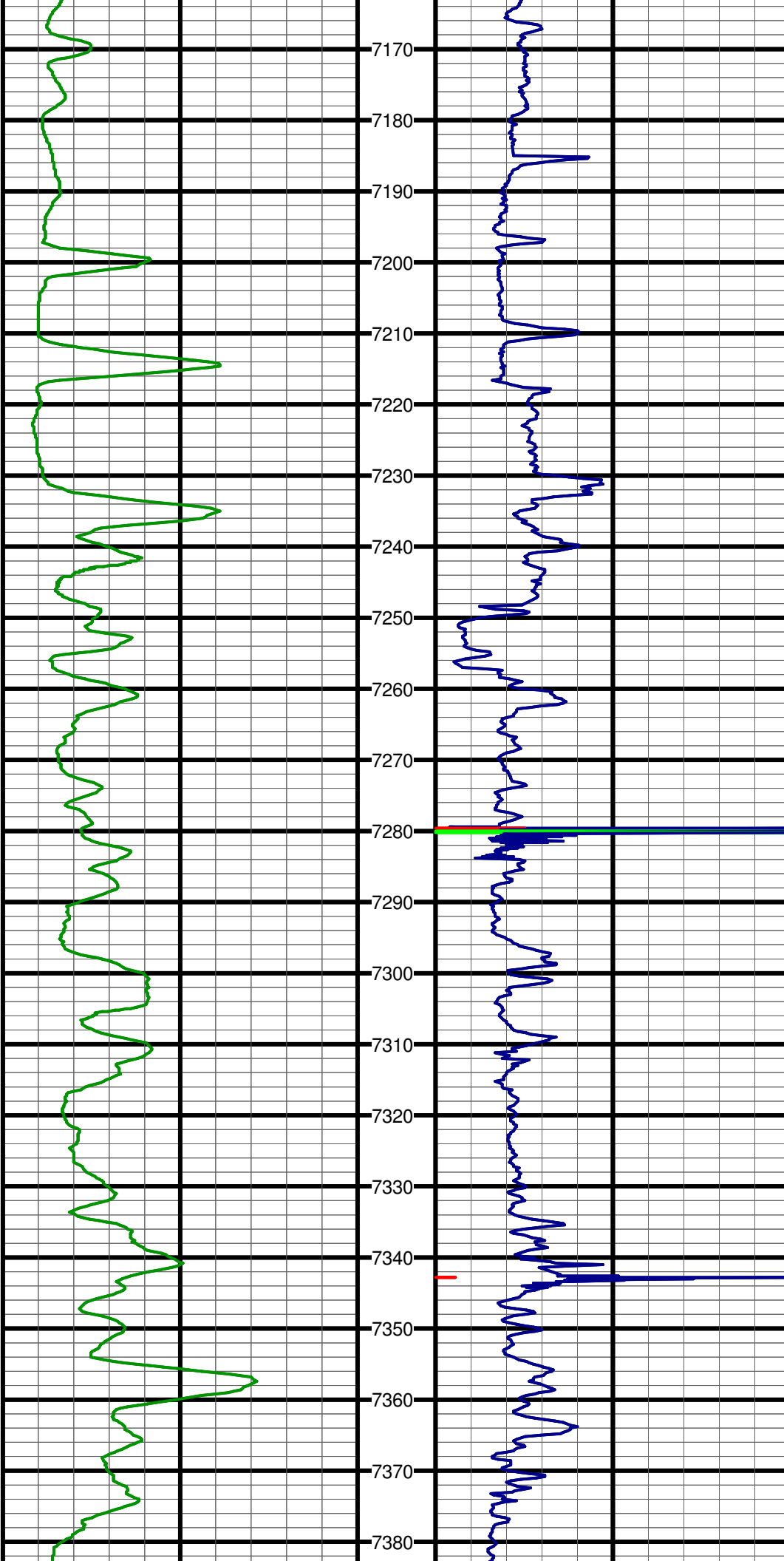
6700

6710

6720







#111 MD:7166.0 TVD:4733.5 I:88.2 A:179.5 VS:2810.1

7170

7180

7190

#112 MD:7198.0 TVD:4734.6 I:87.7 A:179.2 VS:2842.0

7200

7210

7220

#113 MD:7229.0 TVD:4735.9 I:87.5 A:179.3 VS:2873.0

7230

7240

7250

#114 MD:7260.0 TVD:4737.2 I:87.8 A:179.5 VS:2904.0

7260

7270

7280

#115 MD:7292.0 TVD:4738.3 I:88.0 A:179.4 VS:2936.0

7290

7300

7310

7320

#116 MD:7323.0 TVD:4739.5 I:87.9 A:179.4 VS:2966.9

7330

7340

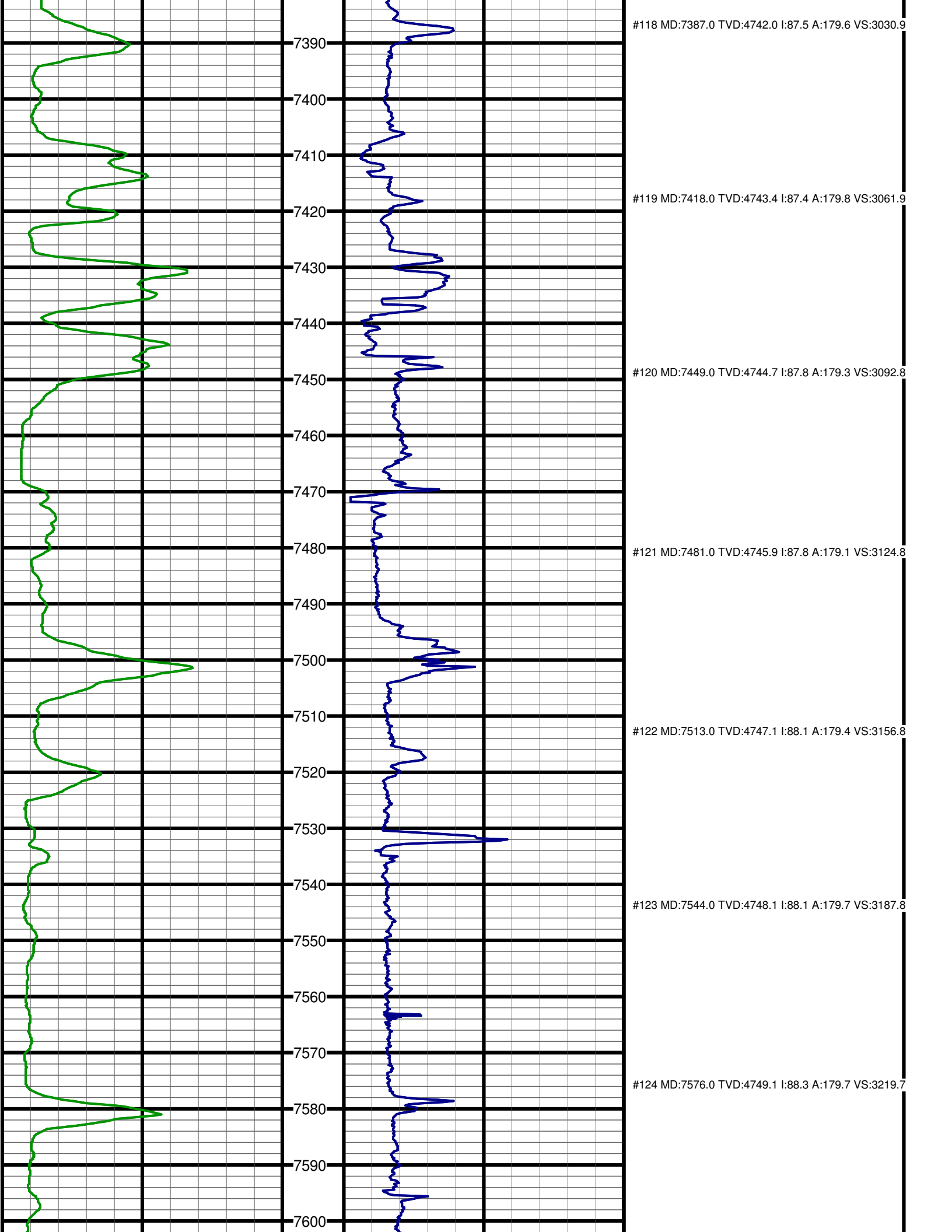
7350

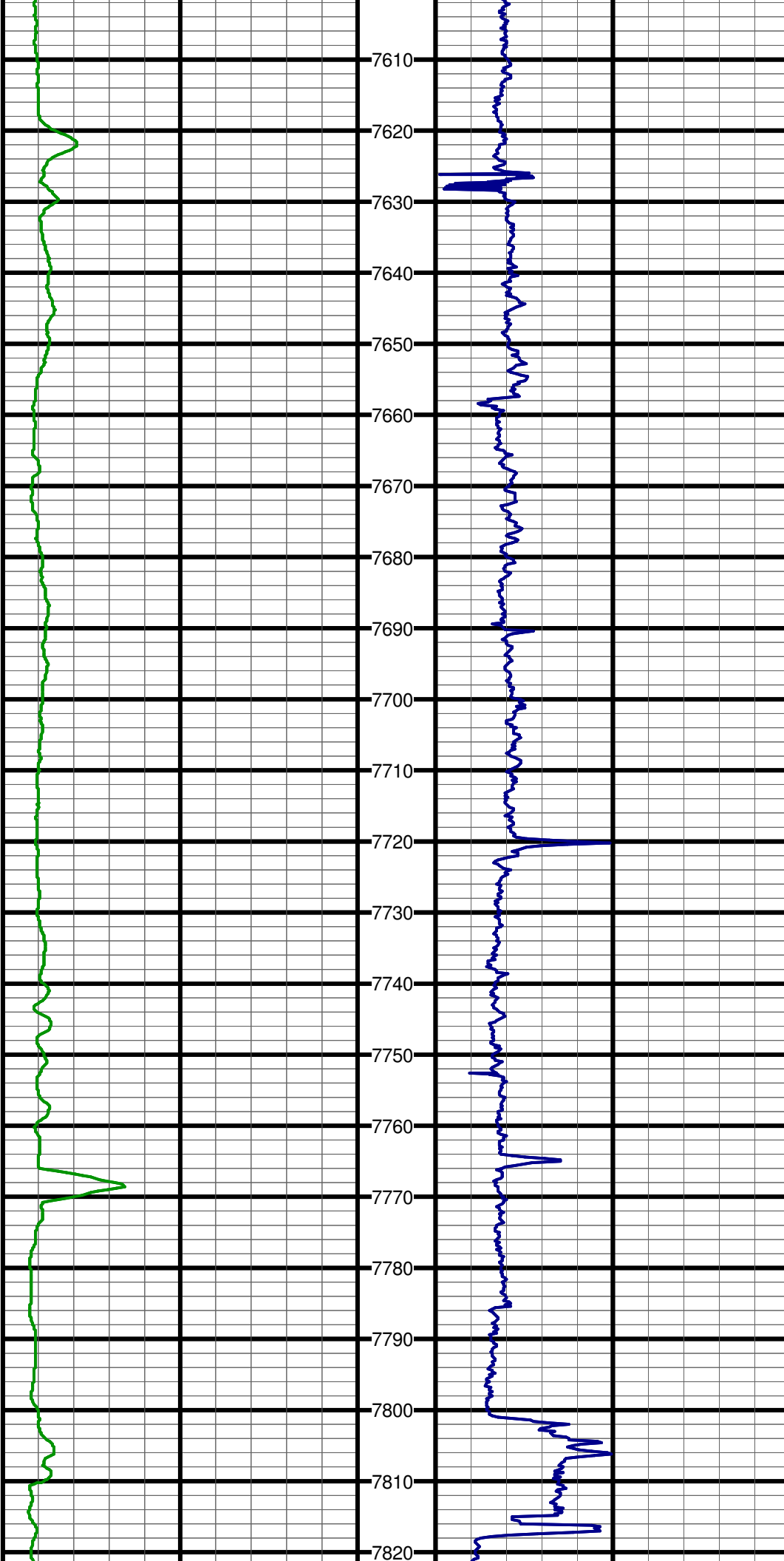
#117 MD:7355.0 TVD:4740.7 I:87.7 A:179.7 VS:2998.9

7360

7370

7380





#125 MD:7607.0 TVD:4750.1 I:88.2 A:179.6 VS:3250.7

7610

7620

7630

#126 MD:7639.0 TVD:4751.0 I:88.3 A:180.0 VS:3282.7

7640

7650

7660

7670

#127 MD:7671.0 TVD:4752.0 I:88.3 A:180.2 VS:3314.7

7680

7690

7700

#128 MD:7702.0 TVD:4752.8 I:88.6 A:180.4 VS:3345.7

7710

7720

7730

#129 MD:7734.0 TVD:4753.6 I:88.6 A:180.5 VS:3377.7

7740

7750

7760

#130 MD:7766.0 TVD:4754.5 I:88.2 A:180.6 VS:3409.7

7770

7780

7790

7800

#131 MD:7797.0 TVD:4755.4 I:88.6 A:180.6 VS:3440.7

7810

7820

