



MIDWEST SURVEYS
 LOGGING - PERFORMING - CONSULTING SERVICES
 P.O. Box 88, Osawatomie, KS 66064
 913 / 735 - 2128

GAMMA RAY / NEUTRON / CCL

File No.

Company

Well

Field

County

Location

Other Services

Lakeshore Operating, LLC.

Fuller No. LOI-10

Vernon

Woodson

4420' FSL & 2025' FEL

NE-SW/4NW/4E

State Kansas

Sec. 33

Temp. 23s

Rge. 16e

Elevation 1087'

Permanent Datum GL

Log Measured from GL

Drilling Measured from GL

Date 02-20-2015

Run Number One

Depth Driller 1120.0

Bottom Logger 1102.2

Bottom Logged Interval 1109.2

Top Log Interval 20.0

Fluid Level

Type Fluid Water

Density / Viscosity NA

Salinity - PPM Cl NA

Max Recorded Temp NA

Estimated Cement Top 0.0

Equipment No. 102

Recorded By Gary Winstead

Witnessed By Wesley Keithman

ROIN

BIT

No.

One

Two

9.875"

5.875"

BOREHOLE RECORD

TO

FROM

4.00

1120.0

7.00"

2.875"

CASINGS RECORD

WT

FROM

17.0 #

0.0

6.5 #

0.0

TO

FROM

40.0

1115.0

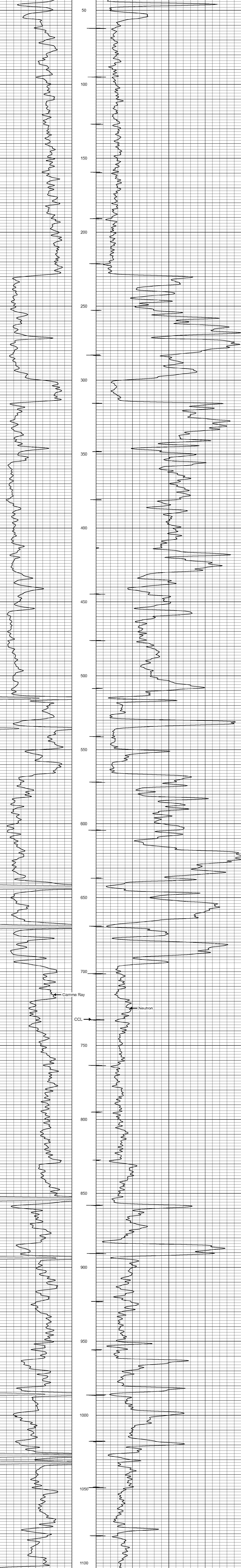
<<< Fold Here >>>

All interpretations are opinions based on inferences from electrical or other measurements and we cannot and do not guarantee the accuracy or correctness of any interpretation, and we shall not, except in the case of gross or willful negligence on our part, be liable or responsible for any loss, costs, damages, or expenses incurred or sustained by anyone resulting from any interpretation made by any of our officers, agents or employees. These interpretations are also subject to our general terms and conditions set out in our current Price Schedule.

Comments

Drilling Contractor :
 Jackman Oilfield Services

Database File: fuller 10loi.db
 Dataset Pathname: pass1
 Presentation Format: gr-n-ccl
 Dataset Creation: Fri Feb 20 12:39:41 2015 by Log SCH 111116
 Charted by: Depth in Feet scaled 1:240



0 Gamma Ray (cps) 150
 150 Gamma Ray (cps) 300
 -1 CCL 1
 100 Neutron (cps) 1900