



MIDWEST SURVEYS
 LOGGING - PERFORMING - CONSULTING SERVICES
 P.O. Box 88, Osawatomie, KS 66064
 913 / 755 - 2128

GAMMA RAY / NEUTRON / CCL

File No. _____

Company **Lakeshore Operating, LLC.**

Well **Fuller No. LO-1-6**

Field **Vernon**

County **Woodson** State **Kansas**

Location **4655 FSL & 1790 FEL**

Other Services _____

Sec. **33** Twp. **23S** Rge. **18E** Elevation **1080'**

Permament Datum **GL** Elevation **1080'**

Log Measured From **GL** Elevation **1080'**

Drilling Measured From **GL** Elevation **1080'**

Date **01-28-2015**

Run Number **One**

Depth Driller **1140.0**

Depth Logger **1118.0**

Bottom Logged Interval **1118.0**

Top Log Interval **20.0**

Fluid Level **Full**

Type Fluid **Water**

Density / Viscosity **NA**

Salinity - PPM Cl **NA**

Max Recorded Temp **NA**

Estimated Cement Top **0.0**

Equipment No. **102** Location **Caswellome**

Recorded By **Gary Winkler**

Witnessed By **Wadeley Keitham**

R/N _____

BOREHOLE RECORD

NO. **BIT** FROM TO SIZE WT FROM TO

One **9.875"** 40.0 40.0 **7.00"** 17.0 # 0.0

Two **5.875"** 40.0 1140.0 **2.875"** 6.5 # 0.0

CASINGS RECORD

TO 40.0

TO 1130.0

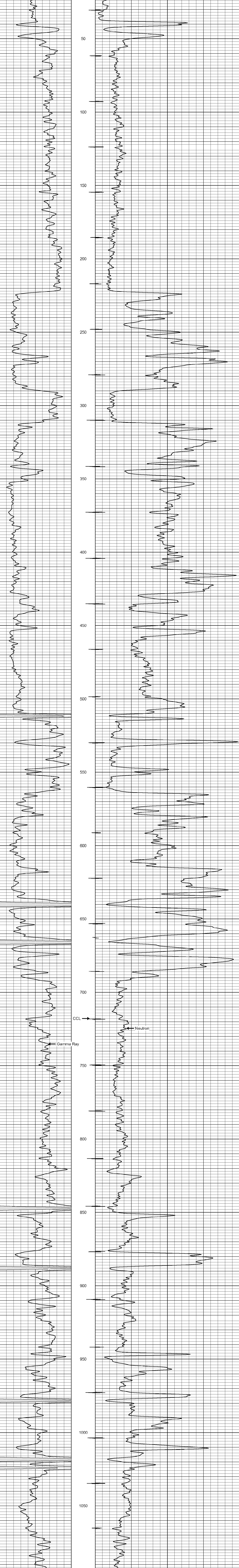
<<< Fold Here >>>

All interpretations are opinions based on inferences from electrical or other measurements and we cannot and do not guarantee the accuracy or correctness of any interpretation, and we shall not, except in the case of gross or willful negligence on our part, be liable or responsible for any loss, costs, damages, or expenses incurred or sustained by anyone resulting from any interpretation made by any of our officers, agents or employees. These interpretations are also subject to our general terms and conditions set out in our current Price Schedule.

Comments

Drilling Contractor :
Jackman Oilfield Services

Database File: fuller 61oi.db
 Dataset Pathname: pass1
 Presentation Format: gr-n-ccl
 Dataset Creation: Wed Jan 28 12:55:08 2015 by Log SCH 111116
 Charted by: Depth in Feet scaled 1:240



Gamma Ray (cps) 0 150
 Neutron (cps) 100 1900
 -1 CCL 1