



**COMPLETION
& PRODUCTION
SERVICES CO.**

**MICRO
LOG**

Company MAI OIL OPERATIONS, INC.
Well F.A. KRUG #5
Field TRAPP
County RUSSELL
State KANSAS

Company MAI OIL OPERATIONS, INC.
Well F.A. KRUG #5
Field TRAPP
County RUSSELL State KANSAS

Location: API # : 15-167-24020-0000
330' FSL & 330' FEL
SEC 15 TWP 15S RGE 14W
Permanent Datum GROUND LEVEL Elevation 1895
Log Measured From KELLY BUSHING 8' A.G.L.
Drilling Measured From KELLY BUSHING
Other Services
CDL/CNL
DIL
Elevation
K.B. 1903
D.F. 1901
G.L. 1895

Date	12/10/14
Run Number	TWO
Depth Driller	3408
Depth Logger	3408
Bottom Logged Interval	3406
Top Log Interval	2300
Casing Driller	8 5/8" @ 515
Casing Logger	515
Bit Size	7 7/8"
Type Fluid in Hole	CHEMICAL MUD
Density / Viscosity	9.3/58
pH / Fluid Loss	9.5/9.6
Source of Sample	FLOWLINE
Rm @ Meas. Temp	.85 @ 60F
Rmt @ Meas. Temp	.63 @ 60F
Rmc @ Meas. Temp	1.02 @ 60F
Source of Rmf / Rmc	MEASUREMENT
Rm @ BHT	.45 @ 111F
Time Circulation Stopped	2 HOURS
Time Logger on Bottom	
Maximum Recorded Temperature	111F
Equipment Number	4010
Location	HAYS, KANSAS
Recorded By	JASON CAPPELLUCCI
Witnessed By	CLINT MUSGROVE

<<< Fold Here >>>

All interpretations are opinions based on inferences from electrical or other measurements and we cannot and do not guarantee the accuracy or correctness of any interpretation, and we shall not, except in the case of gross or willful negligence on our part, be liable or responsible for any loss, costs, damages, or expenses incurred or sustained by anyone resulting from any interpretation made by any of our officers, agents or employees. These interpretations are also subject to our general terms and conditions set out in our current Price Schedule.

Comments

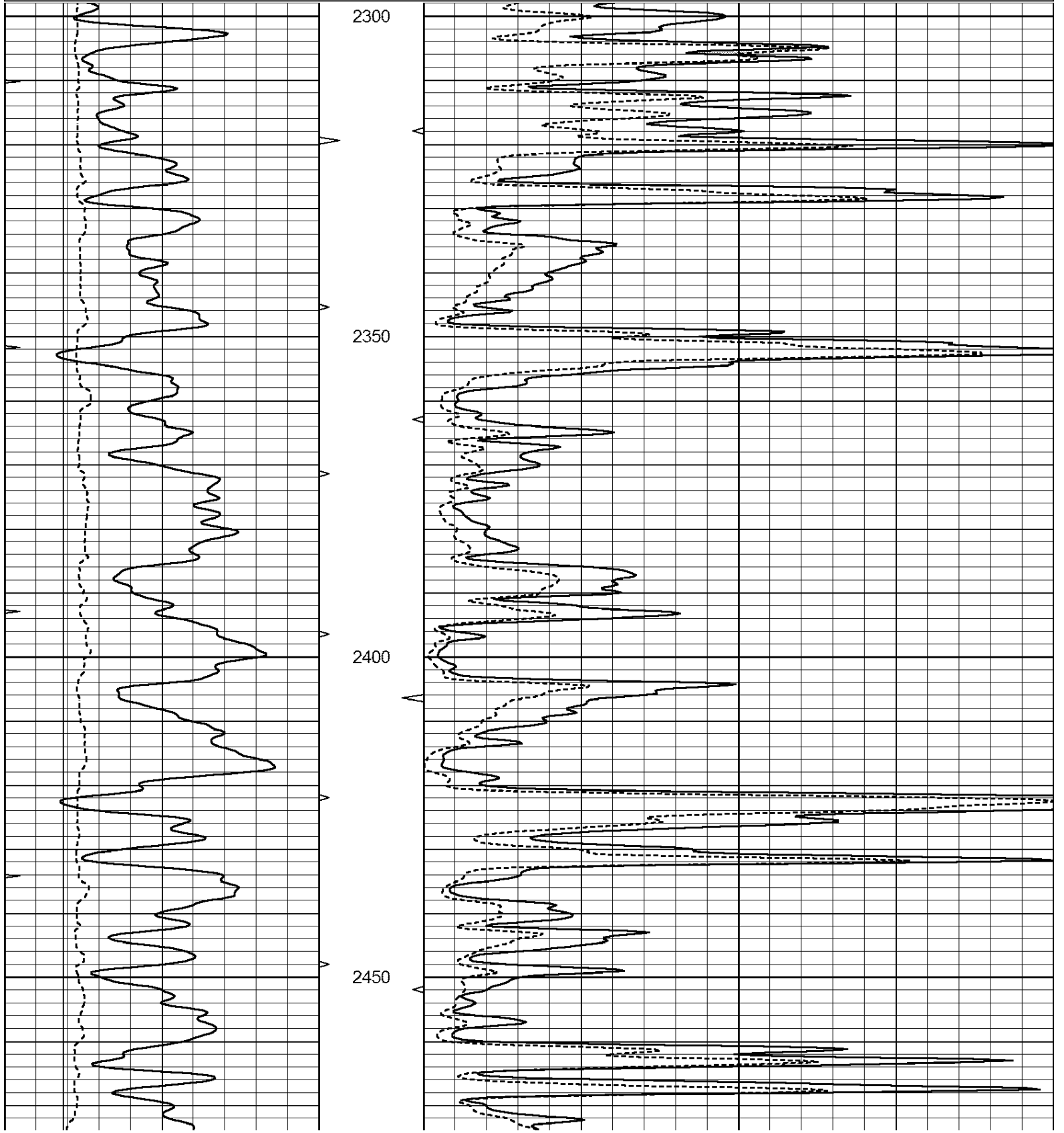
THANK YOU FOR USING NABORS, HAYS, KS. (785) 628-6395
DIRECTIONS:
RUSSELL, KS. - 7 SOUTH TO WINTERSET RD. - 1/2 WEST - NORTH & EAST INTO

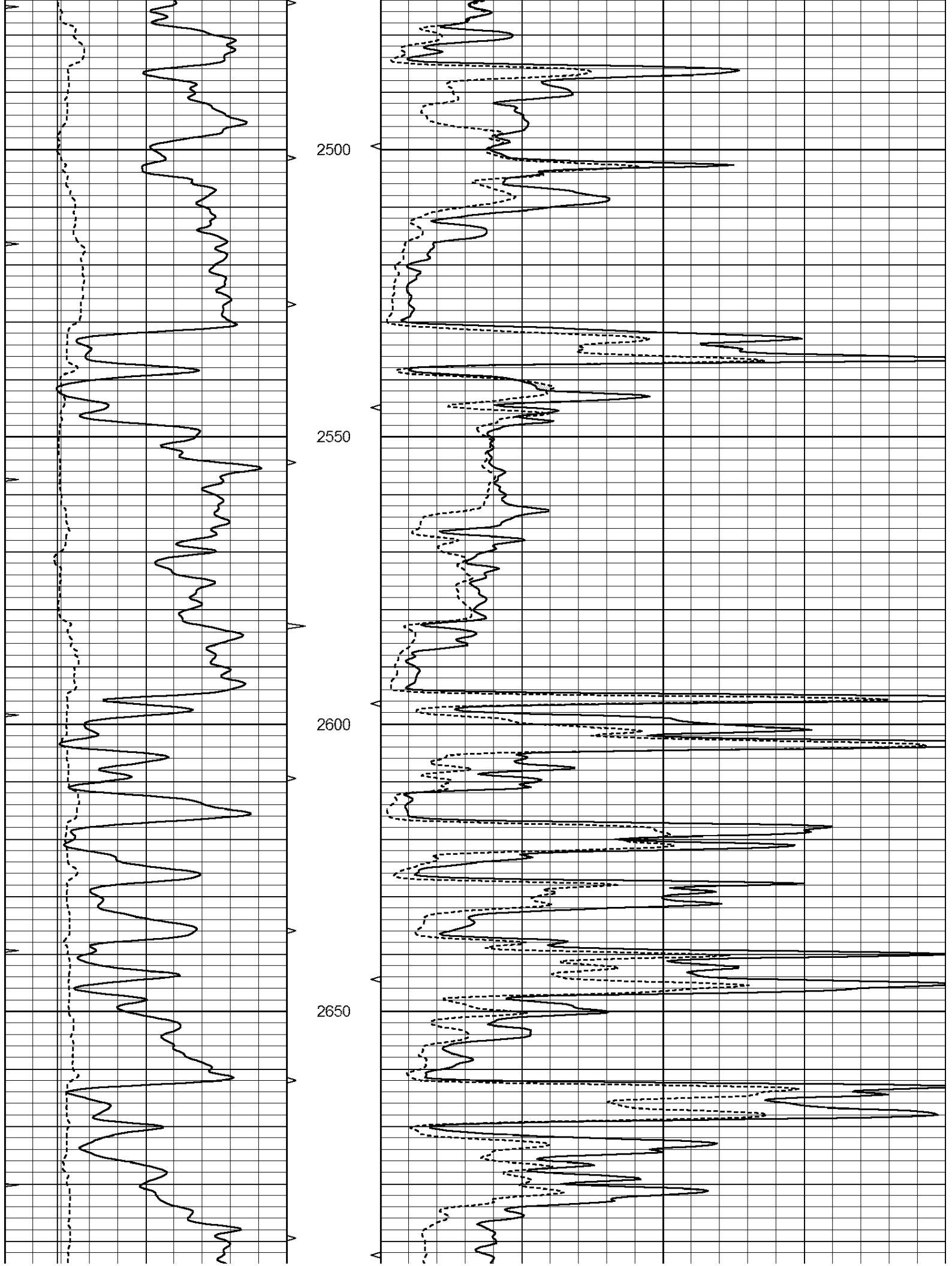


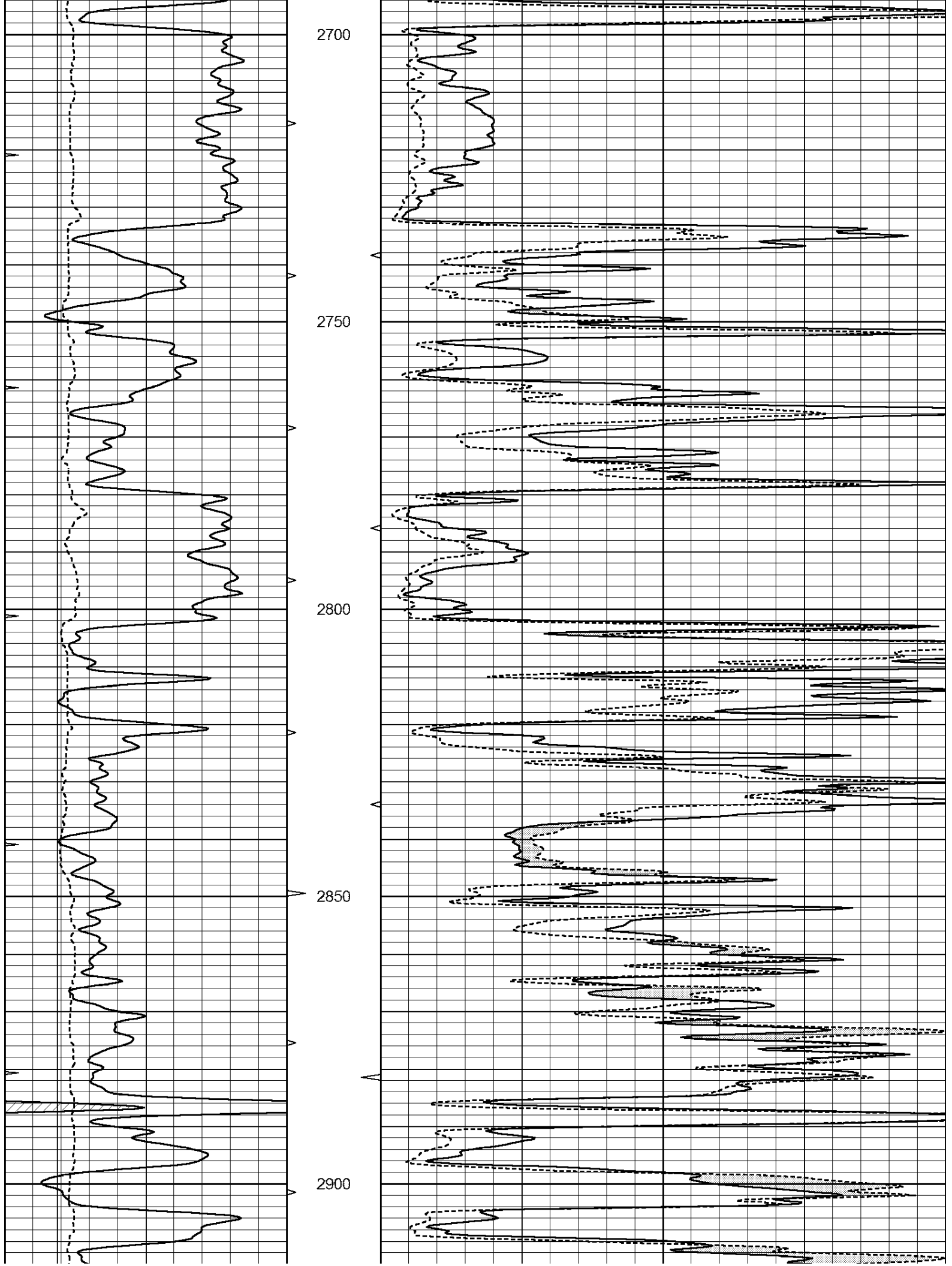
MAIN SECTION

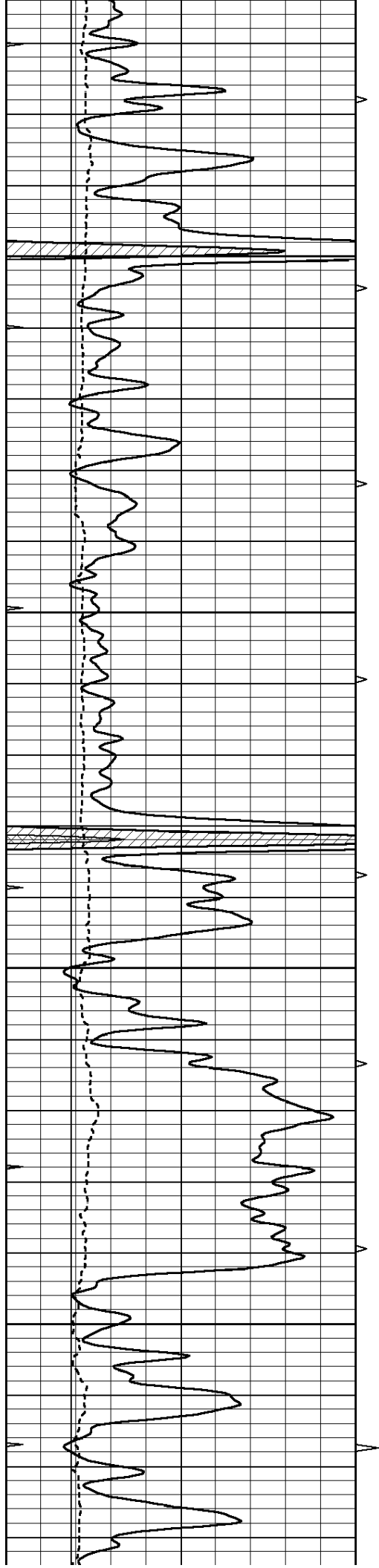
Database File: 26415ddn.db
 Dataset Pathname: pass6.1
 Presentation Format: _micro
 Dataset Creation: Wed Dec 10 13:15:57 2014 by Calc Open-Cased 090629
 Charted by: Depth in Feet scaled 1:240

0	GAMMA RAY (GAPI)	150	ABHV	0	MEL1.5 (Ohm-m)	40
6	CALIPER (in)	16	10 (ft3)	0	MEL2.0 (Ohm-m)	40
0	MINMK	20	TBHV			
			0 (ft3)	10		







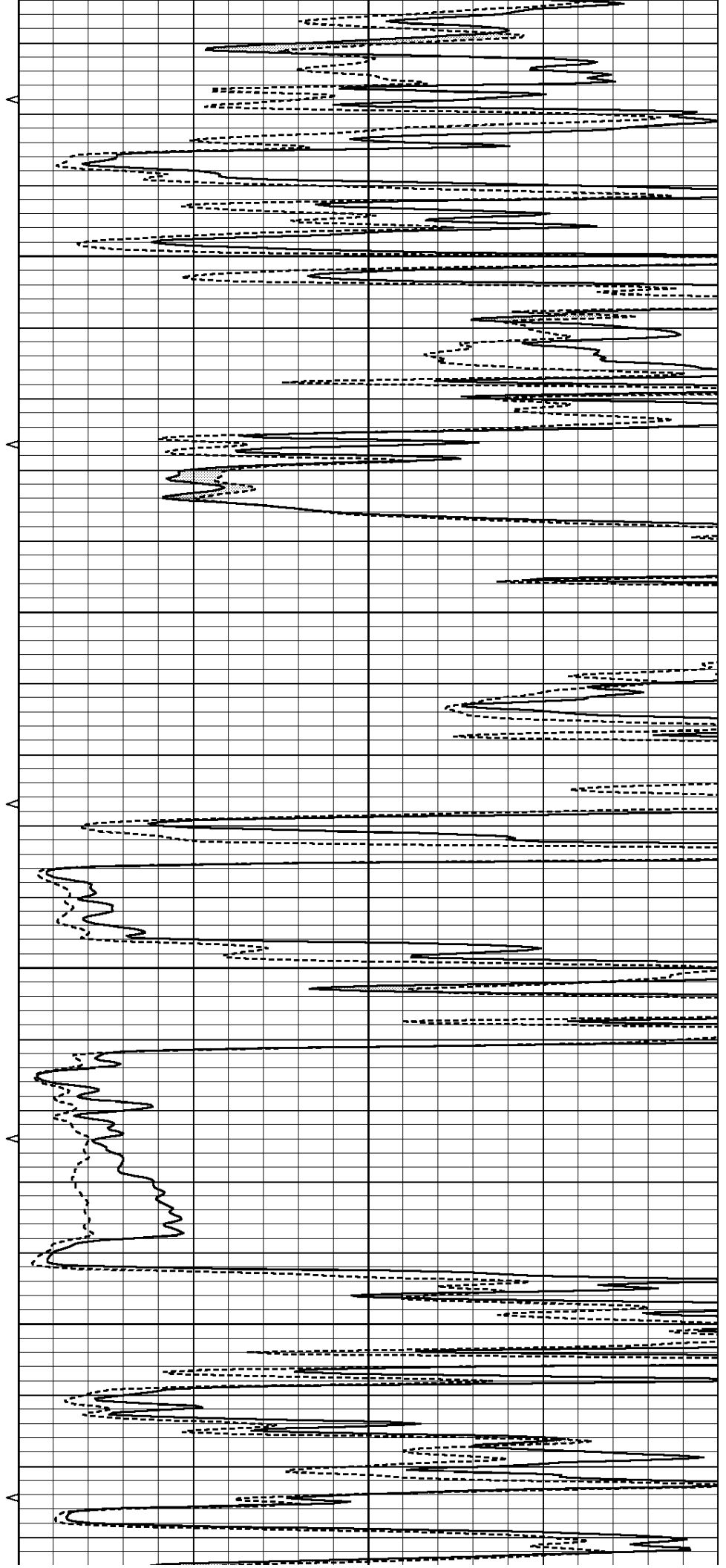


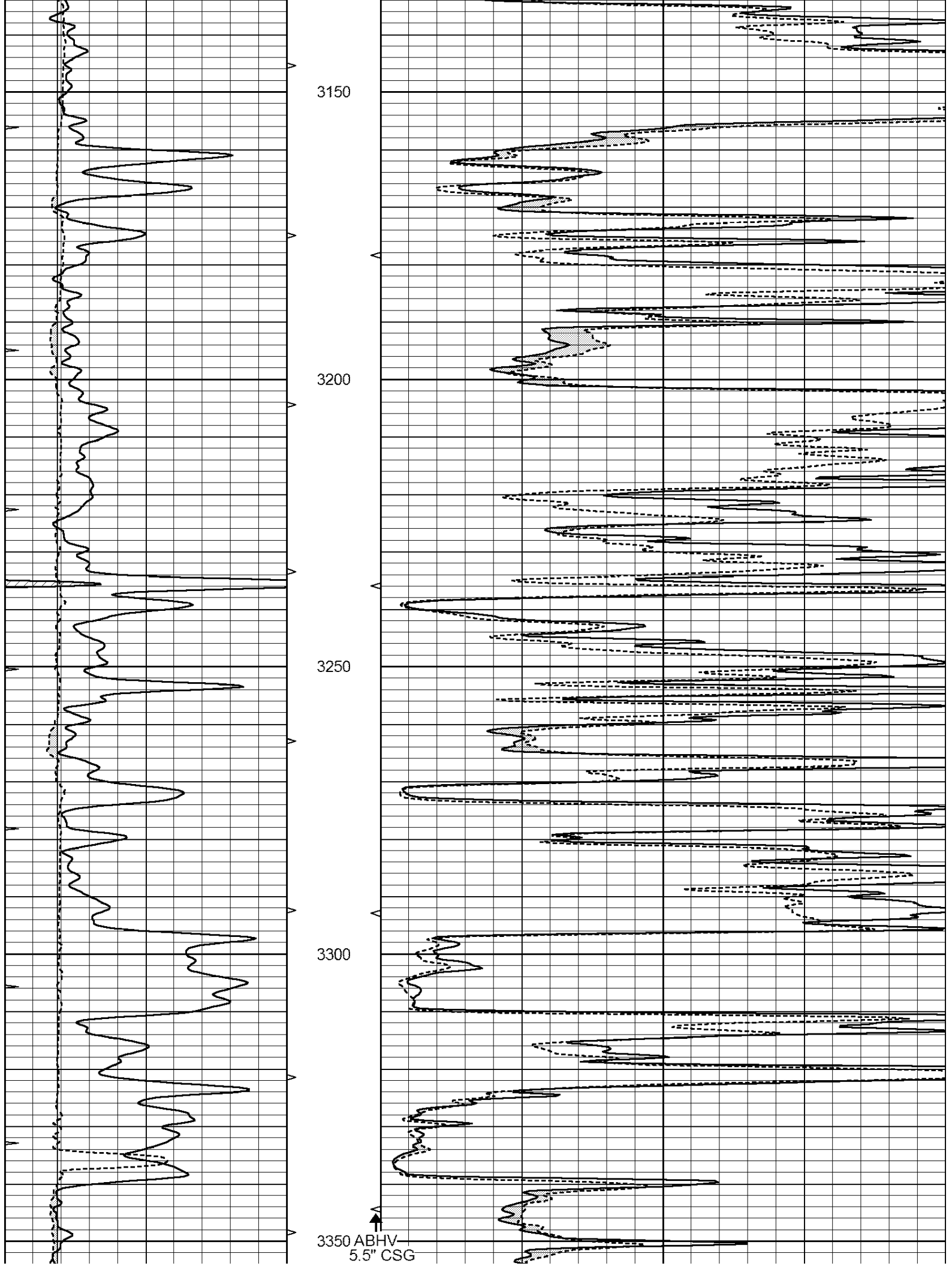
2950

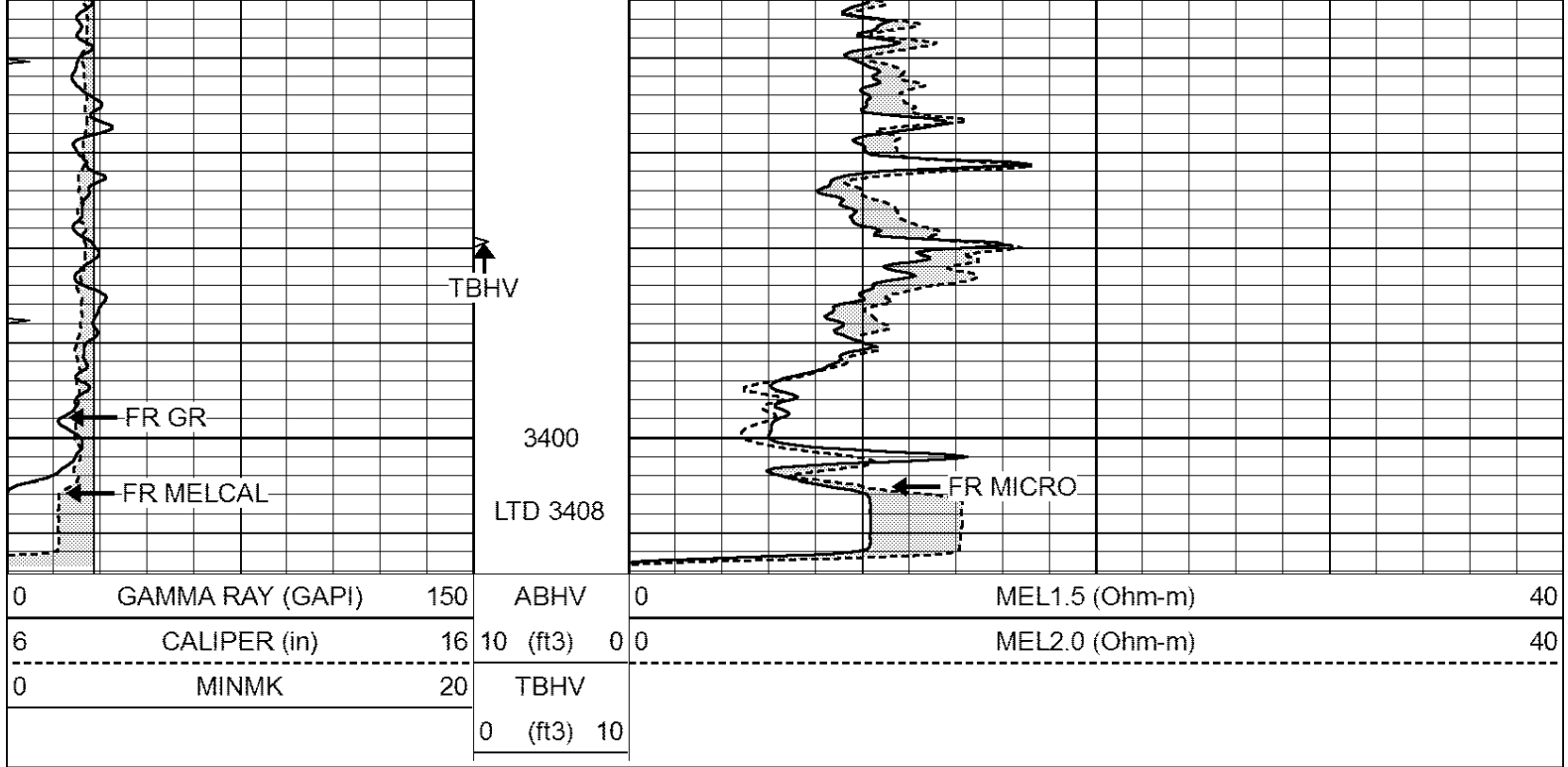
3000

3050

3100



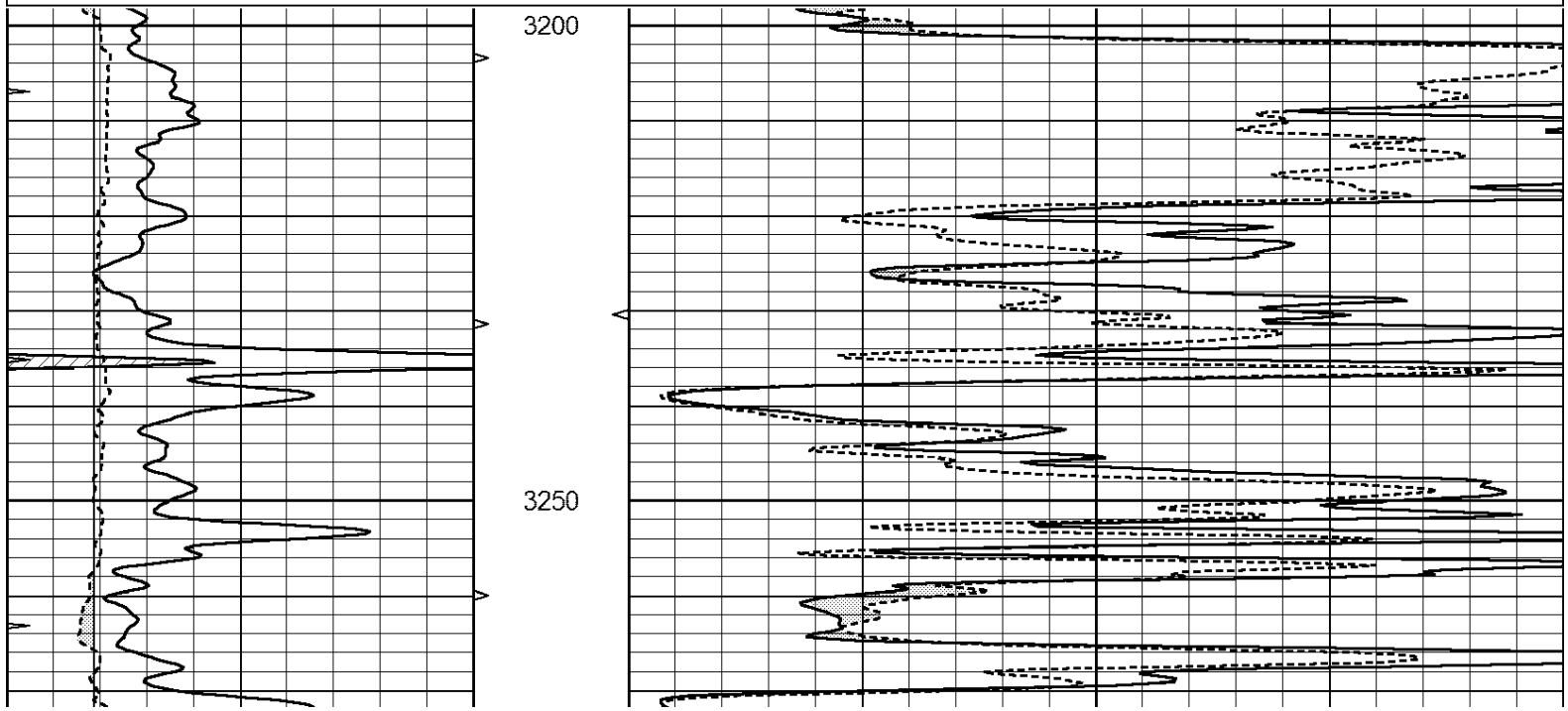


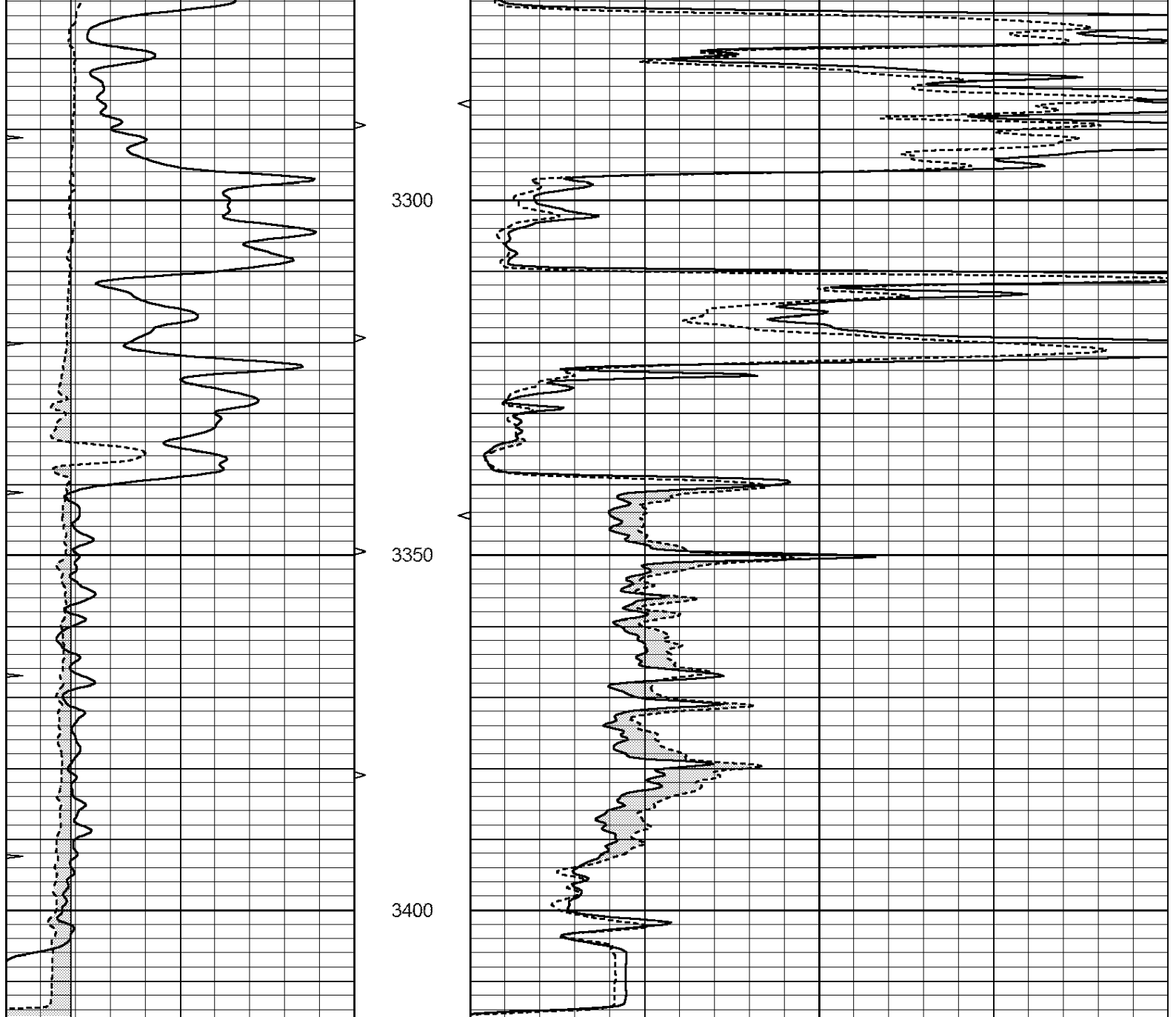


REPEAT SECTION

Database File: 26415ddn.db
 Dataset Pathname: pass5.1
 Presentation Format: _micro
 Dataset Creation: Wed Dec 10 13:12:08 2014 by Calc Open-Cased 090629
 Charted by: Depth in Feet scaled 1:240

0	GAMMA RAY (GAPI)	150	ABHV	0	MEL1.5 (Ohm-m)	40
6	CALIPER (in)	16	10 (ft3)	0	MEL2.0 (Ohm-m)	40
0	MINMK	20	TBHV			
			0 (ft3)	10		





0	GAMMA RAY (GAPI)	150	ABHV	0	MEL1.5 (Ohm-m)	40
6	CALIPER (in)	16	10 (ft3)	0	MEL2.0 (Ohm-m)	40
0	MINMK	20	TBHV			
			0 (ft3)	10		

Calibration Report

Database File: 26415ddn.db
 Dataset Pathname: pass5.1
 Dataset Creation: Wed Dec 10 13:12:08 2014 by Calc Open-Cased 090629

MICRO Calibration Report

Serial Number: MICRO6
 Tool Model: PROBE
 Performed: Thu Oct 30 04:39:38 2014

Caliper Calibration: Gain=6.542 Offset=0.150

References
 Low Cal 8.000 High Cal 14.000
 1.121 2.512

Readings

1.431

2.513

1.5" Calibration:

Gain=38.075

Offset=-1.000

References
Readings

Low Cal
0.000
0.004

High Cal
20.000
1.196

2" Calibration:

Gain=48.000

Offset=-1.600

References
Readings

Low Cal
0.000
0.006

High Cal
20.000
0.913

Gamma Ray Calibration Report

Serial Number:
Tool Model:
Performed:

GR6
OPEN
Wed Dec 10 11:09:24 2014

Calibrator Value:

150.0

GAPI

Background Reading:
Calibrator Reading:

0.0
276.0

cps
cps

Sensitivity:

0.8000

GAPI/cps