



MIDWEST SURVEYS
 LOGGING - PERFORATING - CONSULTING SERVICES
 P.O. Box 68, Oswatimie, KS 66064
 913 / 755 - 2128

GAMMA RAY / NEUTRON / CCL

File No. _____

Company Lakeshore Operating, LLC.

Well Sturdivan "3" No. LO-48

Field Vernon

County Woodson State Kansas

Location 3726' FSL & 4362' FEL

Other Services Perforate

Sec. 34 Twp. 23S Rge. 16E

Permanent Datum Log Measured From G.L. Elevation 1074'

Drilling Measured From G.L. Elevation 1074'

Date 07-22-2016

Run Number One

Depth Driller 1092.0

Depth Logger 1081.0

Bottom Logged Interval 1080.0

Top Log Interval 20.0

Fluid Level Full

Type Fluid Water

Density / Viscosity NA

Salinity - PPM Cl NA

Max Recorded Temp NA

Estimated Cement Top 0.0

Equipment No. Location 102 Osawatomie

Recorded By Gary Windisch

Missed By Wesley Keldham

BOREHOLE RECORD		CASINGS RECORD		TO	
NO.	BIT FROM	TO	SIZE	WGT.	FROM
One	9.875"	40.0	7.00"	17.0#	0.0
Two	5.875"	1092.0	2.875"	6.5#	0.0

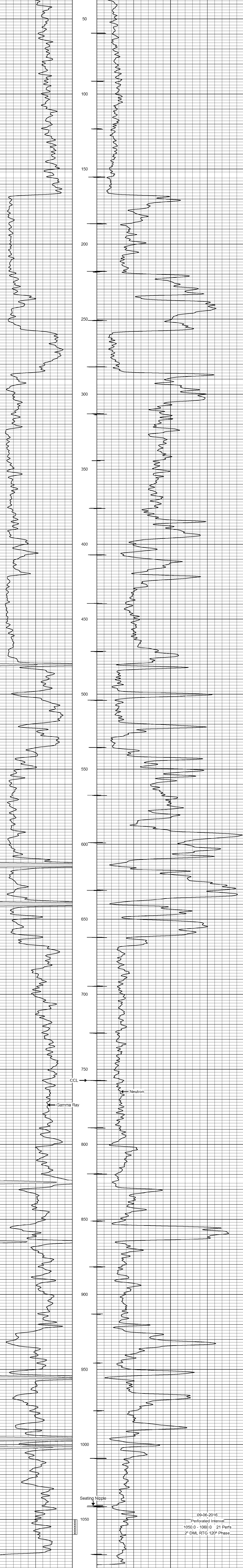
<<< Fold Here >>>

All interpretations are opinions based on inferences from electrical or other measurements and we cannot and do not guarantee the accuracy or correctness of any interpretation, and we shall not, except in the case of gross or willful negligence on our part, be liable or responsible for any loss, costs, damages, or expenses incurred or sustained by anyone resulting from any interpretation made by any of our officers, agents or employees. These interpretations are also subject to our general terms and conditions set out in our current Price Schedule.

Comments

Drilling Contractor :
 Jackman Oilfield Services

Database File: sturdivan3 48lo.db
 Dataset Pathname: pass1
 Presentation Format: gr-n-ccl
 Dataset Creation: Fri Jul 22 11:30:09 2016 by Log SCH 111116
 Charted by: Depth in Feet scaled 1:240



09-06-2016
 Perforated Interval
 1050.0 - 1060.0 21 Perfs.
 2" DML RTG 120° Phase