



MIDWEST SURVEYS
 LOGGING - PERFORATING - CONSULTING SERVICES
 P.O. Box 68, Osawatomie, KS 66064
 913 / 755 - 2128

GAMMA RAY / NEUTRON / CCL

File No. _____

Company **Lakeshore Operating, LLC.**

Well **Sturdivan "3" No. LOI-7**

Field **Vernon**

County **Woodson**

State **Kansas**

Location **4192' FSL & 4594' FEL**

Sec. **34** Twp. **23S** Rge. **16E**

Perforation Datum **GL** Elevation **1080'**

Log Measured From **GL** K.B. NA

Drilling Measured From **GL** D.F. NA

Date **03-07-2016** Elevation **GL 1080'**

Run Number **One**

Depth Driller **1092.0**

Depth Logger **1083.0**

Bottom Logged Interval **1082.0**

Top Log Interval **20.0**

Fluid Level **F-111**

Type Fluid	Water
Density / Viscosity	NA
Salinity - PPM Cl	NA
Max Recorded Temp	NA
Estimated Cement Top	0.0
Equipment No	102
Location	Oswatomie
Recorded By	Garv Winklesch
Witnessed By	Vasilev Kerdjiam

BONEHOLE RECORD		CASING RECORD	
NO.	BIT	TO	SIZE
One	9.875"	40.0	7.00"
Two	5.875"	1092.0	2.875"
		FROM	WGT.
		0.0	17.0#
		FROM	FROM
		0.0	0.0
		TO	TO
		1085.0	1085.0

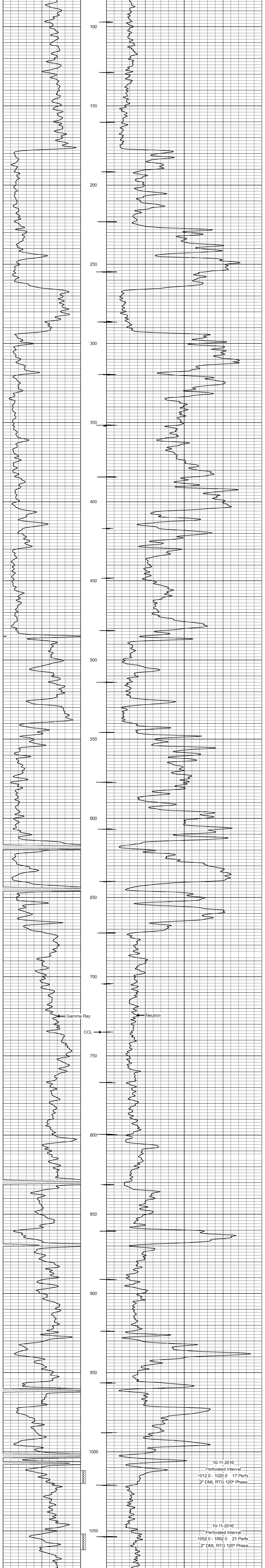
<<< Fold Here >>>

All interpretations are opinions based on inferences from electrical or other measurements and we cannot and do not guarantee the accuracy or correctness of any interpretation, and we shall not, except in the case of gross or willful negligence on our part, be liable or responsible for any loss, costs, damages, or expenses incurred or sustained by anyone resulting from any interpretation made by any of our officers, agents or employees. These interpretations are also subject to our general terms and conditions set out in our current Price Schedule.

Comments

Drilling Contractor :
 Jackman Oilfield Services

Database File: sturdivan3 7-loi.db
 Dataset Pathname: pass1
 Presentation Format: gr-n-ccl
 Dataset Creation: Wed Sep 07 11:12:20 2016 by Log SCH 111116
 Charted by: Depth in Feet scaled 1:240



0 Gamma Ray (cps) 150
 150 Gamma Ray (cps) 300
 -1 CCL 1
 100 Neutron (cps) 1900