

**MIDWEST SURVEYS**  
 LOGGING - PERFORATING - CONSULTING SERVICES  
 P.O. Box 68, Osawatomie, KS 66064  
 913 / 735 - 2128

**GAMMA RAY / NEUTRON / CCL**

File No. \_\_\_\_\_

Company Lakeshore Operating, LLC.

Well Sturdivan "3" No. LOI-5

Field Vernon

County Woodson

State Kansas

Location 4008' FSL & 4876' FEL  
SE-SW-NW-NW

Other Services Perforate

Sec. 34  
Permament Datum Twp. 23S Rge. 16E  
Log Measured From GL Elevation 1077  
Drilling Measured From GL Elevation 1077

Date 08-05-2016

Run Number One

Depth Driller 1092.0

Depth Logger 1092.8

Bottom Logged Interval 1081.8

Top Log Interval 20.0

Fluid Level Full

Type Fluid	Water
Density / Viscosity	NA
Salinity - PPM Cl	NA
Max Recorded Temp	NA
Estimated Cement Top	0.0
Equipment No	102
Location	Oswalomie
Recorded by	Gary Windisch
Missed by	Wesley Keldiam

BOREHOLE RECORD		CASINGS RECORD	
RUN No	BIT FROM TO	SIZE	WT. FROM TO
One	9.875" 40.0 4.0	7.00"	17.0# 0.0
Two	5.875" 40.0 1092.0	2.875"	6.5# 0.0
			1085.0

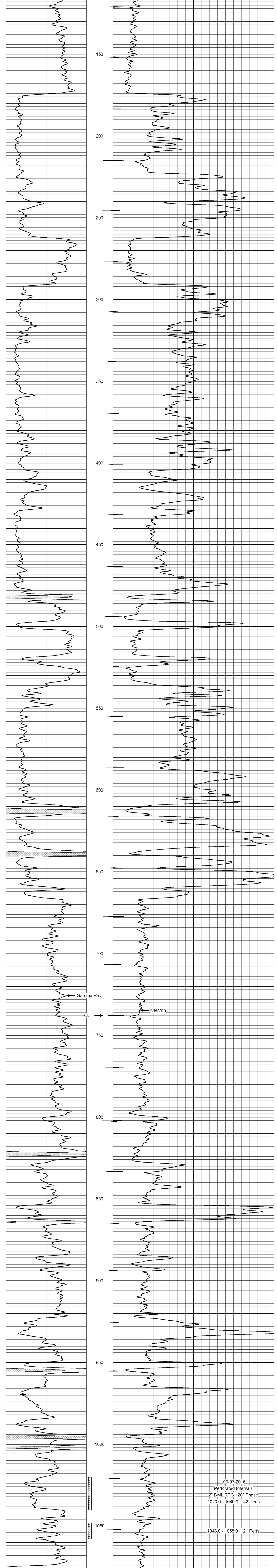
<<< Fold Here >>>

All interpretations are opinions based on inferences from electrical or other measurements and we cannot and do not guarantee the accuracy or correctness of any interpretation, and we shall not, except in the case of gross or willful negligence on our part, be liable or responsible for any loss, costs, damages, or expenses incurred or sustained by anyone resulting from any interpretation made by any of our officers, agents or employees. These interpretations are also subject to our general terms and conditions set out in our current Price Schedule.

Comments

Drilling Contractor :  
Jackman Oilfield Services

Database File: sturdivan3 5-loi.db  
 Dataset Pathname: pass1  
 Presentation Format: gr-n-ccl  
 Dataset Creation: Fri Aug 05 12:43:03 2016 by Log SCH 111116  
 Charted by: Depth in Feet scaled 1:240



0 Gamma Ray (cps) 150  
150 Gamma Ray (cps) 300  
-1 CCL 1  
100 Neutron (cps) 1900

09-07-2016  
Perforated Intervals  
2" DML RTG 120° Phase  
1020.0 - 1040.0 42 Perfs  
1048.0 - 1058.0 21 Perfs