



MIDWEST SURVEYS
 LOGGING - PERFORATING - CONSULTING SERVICES
 P.O. Box 68, Osawatomie, KS 66064
 913 / 755 - 2128

GAMMA RAY / NEUTRON / CCL

File No.

Company: Lakeshore Operating, LLC.
 Well: Sturdivan "3" No. LOI- 8
 Field: Vernon
 County: Woodson State: Kansas

Location: 4595 FSL & 4818 FEL
 NE-SW-NW-1NW

Sec. 34 Permament Datum: Twp. 23S Rge. 16E
 Log Measured From: GL Elevation: 1076'
 Drilling Measured From: GL Elevation: 1076'

Date: 03-24-2016
 Run Number: One
 Depth Driller: 1092.0
 Depth Logger: 1093.0
 Bottom Logged Interval: 1092.0
 Top Log Interval: 20.0
 Fluid Level: Full

Type Fluid	Water
Density / Viscosity	NA
Salinity - PPM Cl	NA
Max Recorded Temp	NA
Estimated Cement Top	0.0
Equipment No.	102
Location	Osawatomie
Recorded By	Garv Mindlich
Witnessed By	Vasilev Kerdcham

BORNE-HOLE RECORD		CASING RECORD	
R/N	NO	TO	TO
BIT	FROM	FROM	FROM
One	9.875" 40.0	7.00" 40.0	17.0# 40.0
Two	5.875" 40.0	2.875" 1092.0	6.5# 1085.0

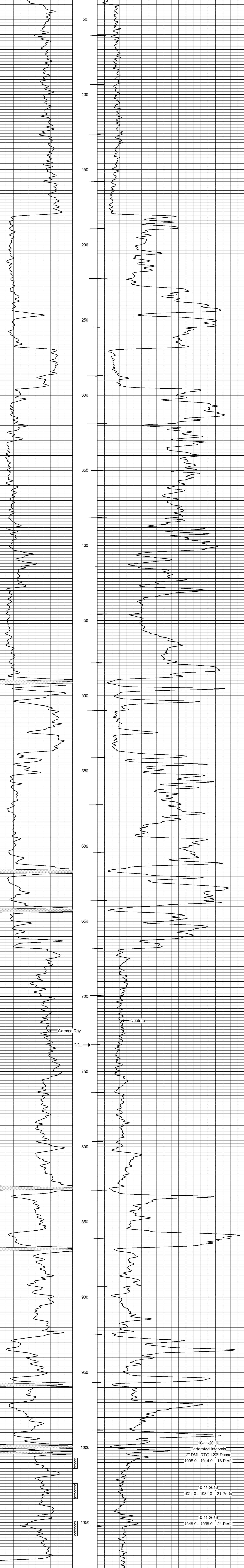
<<< Fold Here >>>

All interpretations are opinions based on inferences from electrical or other measurements and we cannot and do not guarantee the accuracy or correctness of any interpretation, and we shall not, except in the case of gross or willful negligence on our part, be liable or responsible for any loss, costs, damages, or expenses incurred or sustained by anyone resulting from any interpretation made by any of our officers, agents or employees. These interpretations are also subject to our general terms and conditions set out in our current Price Schedule.

Comments

Drilling Contractor :
 Jackman Oilfield Services

Database File: sturdivan3 8-loi.db
 Dataset Pathname: pass1
 Presentation Format: gr-n-ccl
 Dataset Creation: Wed Aug 24 12:28:46 2016 by Log SCH 111116
 Charted by: Depth in Feet scaled 1:240



0 Gamma Ray (cps) 150
 150 Gamma Ray (cps) 300
 -1 CCL 1
 100 Neutron (cps) 1900