



MIDWEST SURVEYS
 LOGGING - PERFORATING - CONSULTING SERVICES
 P.O. Box 88, Osawatomie, KS 66064
 913 / 755 - 2128

GAMMA RAY / NEUTRON / CCL

File No. _____

Company Lakeshore Operating, LLC.

Well Sturdivan "3" No. LOI-4

Field Vernon

County Woodson

State Kansas

Location 3726' FSL & 4594' FEL

Other Services Perforate

Sec. 34

Permament Datum Twp. 23S Rge. 16E

Log Measured From Elevation 1077'

Drilling Measured From Elevation 1077'

Date 09-05-2016

Run Number One

Depth Driller 1092.0

Bottom Logger 1084.7

Bottom Logged Interval 1083.7

Top Log Interval 20.0

Fluid Level Full

Type Fluid Water

Density / Viscosity	NA
Salinity - PPM Cl	NA
Max Recorded Temp	NA
Estimated Cement Top	0.0
Equipment No	102
Location	Osawatomie
Recorded By	Garv Windisch
Missed By	Vasilev Kerdjian

BOREHOLE RECORD		CASINGS RECORD	
R/N	NO	BIT	FROM
One	9.875"	40.0	7.00"
Two	5.875"	40.0	17.0"
		SIZE	WGT.
		2.875"	6.5#
		FROM	TO
		1085.0	1085.0

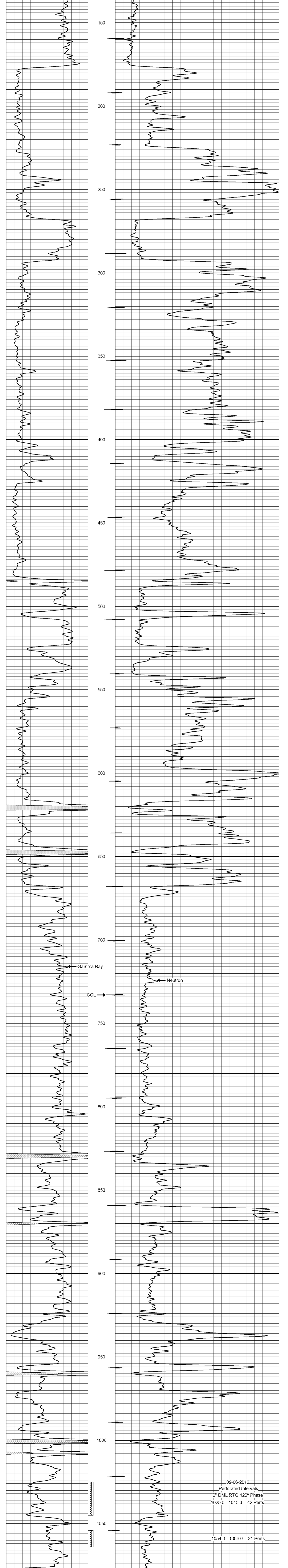
<<< Fold Here >>>

All interpretations are opinions based on inferences from electrical or other measurements and we cannot and do not guarantee the accuracy or correctness of any interpretation, and we shall not, except in the case of gross or willful negligence on our part, be liable or responsible for any loss, costs, damages, or expenses incurred or sustained by anyone resulting from any interpretation made by any of our officers, agents or employees. These interpretations are also subject to our general terms and conditions set out in our current Price Schedule.

Comments

Drilling Contractor :
 Jackman Oilfield Services

Database File: sturdivan3 4-loi.db
 Dataset Pathname: pass1
 Presentation Format: gr-n-ccl
 Dataset Creation: Fri Aug 05 11:25:18 2016 by Log SCH 111116
 Charted by: Depth in Feet scaled 1:240



0 Gamma Ray (cps) 150
 150 Gamma Ray (cps) 300
 -1 CCL 1
 100 Neutron (cps) 1900