



MIDWEST SURVEYS
 LOGGING - PERFORATING - CONSULTING SERVICES
 P.O. Box 88, Osawatomie, KS 66064
 913 / 755 - 2128

GAMMA RAY / NEUTRON / CCL

File No. _____

Company **Laymon Oil II, LLC**

Well **Wingrave No. 78-16**

Field **Vernon**

County **Woodson**

State **Kansas**

Location **5100' FSL & 4785' FEL**

Sec. 16 **NE-NW-NW-NW**

Permament Datum **GL**

Log Measured From **GL**

Drilling Measured From **GL**

Date **02-01-2017**

Run Number **One**

Depth Driller **1105.0**

Bottom Logger **1093.5**

Bottom Logged Interval **1092.5**

Top Log Interval **20.0**

Fluid Level **Full**

Type Fluid **Water**

Density / Viscosity **NA**

Salinity - PPM Cl **NA**

Max Recorded Temp **NA**

Estimated Cement Top **0.0**

Equipment No **104**

Location **Osawatomie**

Recorded by **Steve Windisch**

Witnessed by **Mike Lammon**

BOREHOLE RECORD

BIT FROM TO SIZE

One 12.25" 40.0 8.625" 24.0# 0.0

Two 6.00" 40.0 1105.0 2.875" 6.5# 0.0

CASINGS RECORD

FROM TO

1098.0

Other Services

Perforate

Elevation 1027'

KB NA

DL NA

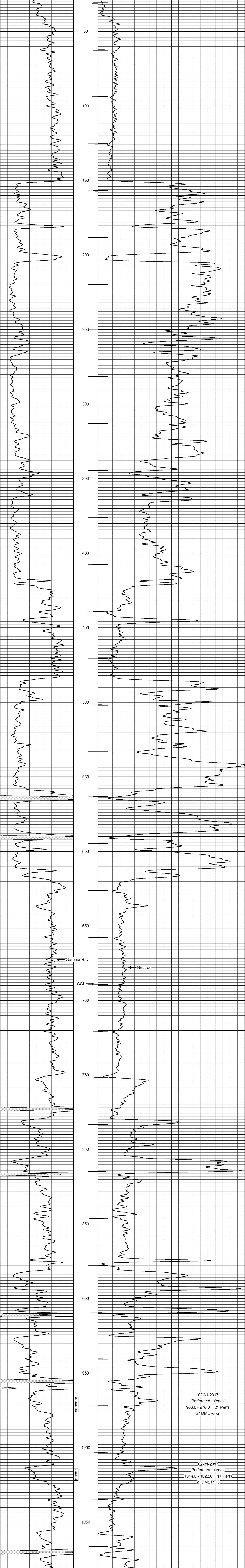
<<< Fold Here >>>

All interpretations are opinions based on inferences from electrical or other measurements and we cannot and do not guarantee the accuracy or correctness of any interpretation, and we shall not, except in the case of gross or willful negligence on our part, be liable or responsible for any loss, costs, damages, or expenses incurred or sustained by anyone resulting from any interpretation made by any of our officers, agents or employees. These interpretations are also subject to our general terms and conditions set out in our current Price Schedule.

Comments

Drilling Contractor :
 Laymon Oil II, LLC.

Database File: wingrave 78-16.db
 Dataset Pathname: pass1
 Presentation Format: gr-n-ccl
 Dataset Creation: Wed Feb 01 16:01:20 2017 by Log SCH 111116
 Charted by: Depth in Feet scaled 1:240



0 Gamma Ray (cps) 150 100 Neutron (cps) 1900