



**MIDWEST SURVEYS**  
 LOGGING - PERFORATING - CONSUL TING SERVICES  
 P.O. Box 68, Osawatomie, KS 66084  
 913.755.2128

**GAMMA RAY / NEUTRON / CCL**

File No. Company Laymon Oil II, LLC

Well Kenneth Stockebrand No. 18-16

Field Owl Creek

County Woodson State Kansas

Location 165' FSL & 500' FEL

Sec. 17 Twp. 25S Rge. 16E

Perforated Interval SW-SE-SE-SE

Log Measured From GL

Drilling Measured From GL

Date 02-01-2017

Run Number One

Depth Driller 1010.0

Depth Logger 998.3

Bottom Logged Interval 997.3

Top Log Interval 20.0

Fluid Level Full

Type Fluid Water

Density / Viscosity NA

Salinity - PPM Cl NA

Max Recorded Temp NA

BORE-HOLE RECORD		CASING RECORD			
Run	TO	SIZE	WT	FROM	TO
One	40.0	8.625"	24.0#	0.0	40.0
Two	6.00'	1010.0	2.875"	6.5#	1005.0

<<< Fold Here >>>

All interpretations are opinions based on inferences from electrical or other measurements and we cannot and do not guarantee the accuracy or correctness of any interpretation, and we shall not, except in the case of gross or willful negligence on our part, be liable or responsible for any loss, costs, damages, or expenses incurred or sustained by anyone resulting from any interpretation made by any of our officers, agents or employees. These interpretations are also subject to our general terms and conditions set out in our current Price Schedule.

**Comments**

Drilling Contractor :  
 Laymon Oil II, LLC.

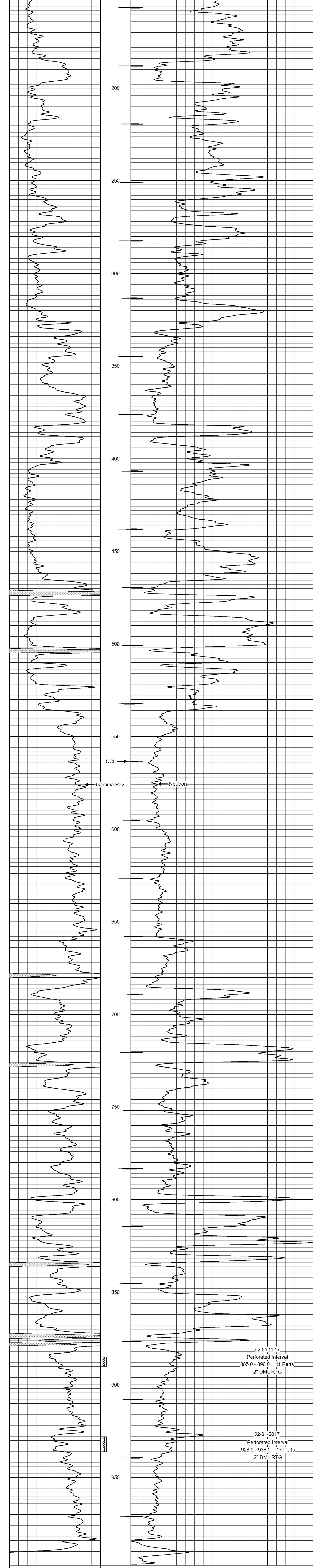
Database File: stockebrand k18-16.db

Dataset Pathname: pass1

Presentation Format: gr-n-ccl

Dataset Creation: Wed Feb 01 09:05:34 2017 by Log SCH 111116

Charted by: Depth in Feet scaled 1:240



02-01-2017  
 Perforated Interval  
 885.0 - 890.0 11 Perfs  
 2" DML RTG

02-01-2017  
 Perforated Interval  
 928.0 - 936.0 17 Perfs  
 2" DML RTG