



**MIDWEST SURVEYS**  
 LOGGING - PERFORATING - CONSULTING SERVICES  
 P.O. Box 66, Osawatomie, KS 66064  
 913-755-2128

**GAMMA RAY / NEUTRON / CCL**

File No.

Company Laymon Oil II, LLC  
 Well LE Robison No. 46-16  
 Field Vernon  
 County Woodson State Kansas

Location  
 3085' FSL & 3045' FEL  
 NM-SE-SE-NW

Sec. 29  
 Permian Datum  
 Log Measured From  
 Drilling Measured From

Other Services  
 Petrofate

Twp. 23s Rge. 16e  
 Elevation 1105'

Perforated Interval  
 K.B. NA  
 D.F. NA  
 G.L. 1105'

Date 02-02-2017

Run Number One

Depth Logger 1200.0

Bottom Logged Interval 1185.5

Top Log Interval 20.0

Fluid Level Full

Type Fluid Water  
 Density / Viscosity NA  
 Salinity - PPM Cl NA  
 Max Recorded Temp NA  
 Estimated Cement Top 0.0

Equipment No. Location  
 104 Clearstone  
 Recorded By Geni Windson  
 Witnessed By Mike Laymon

BORE-HOLE RECORD  
 No. BIT FROM TO SIZE WGT. FROM TO  
 One 12.25" 40.0 8.625" 0.0 24.0# 0.0 4.0  
 Two 6.00" 40.0 2.875" 6.5# 0.0 1195.0

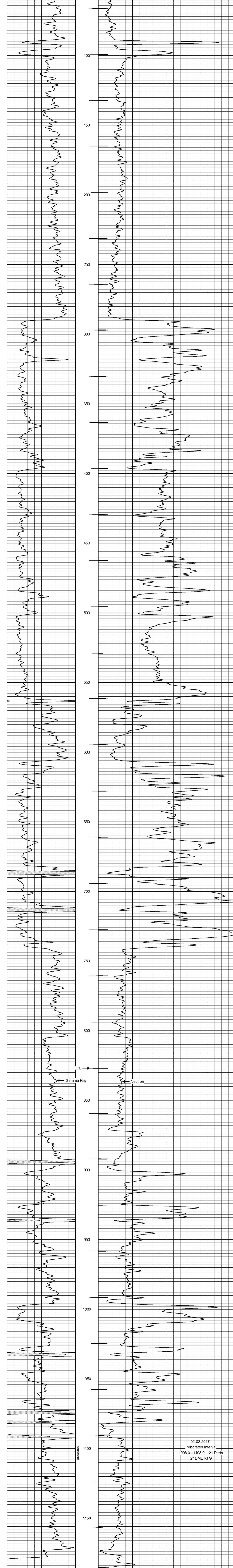
CASINGS RECORD  
 TO 4.0  
 TO 1195.0

<<< Fold Here >>>

All interpretations are opinions based on inferences from electrical or other measurements and we cannot and do not guarantee the accuracy or correctness of any interpretation, and we shall not, except in the case of gross or willful negligence on our part, be liable or responsible for any loss, costs, damages, or expenses incurred or sustained by anyone resulting from any interpretation made by any of our officers, agents or employees. These interpretations are also subject to our general terms and conditions set out in our current Price Schedule.

Comments  
 Drilling Contractor :  
 Laymon Oil II, LLC.

Database File: le robison 46-16.db  
 Dataset Pathname: pass1  
 Presentation Format: gr-n-ccl  
 Dataset Creation: Thu Feb 02 14:09:00 2017 by Log SCH 111116  
 Charted by: Depth in Feet scaled 1:240



02-02-2017  
 Perforated Interval  
 1098.0 - 1108.0 21 Perfs  
 2" DML RTG