



MIDWEST SURVEYS
 LOGGING - PERFORATING - CONSULTING SERVICES
 P.O. Box 66, Osawatomie, KS 66064
 913 735 - 2128

GAMMA RAY / NEUTRON / CCL

File No.

Company Laymon Oil II, LLC
 Well LE Robison No. 45-16
 Field Vernon
 County Woodson State Kansas

Location 3990' FSL & 1190' FEL
 SW-SW-NE-NE

Sec. 29 Permian Datum
 Log Measured From
 Drilling Measured From

Date 02-02-2017
 Run Number One
 Depth Logger 1200.0
 Bottom Logged Interval 20.0
 Fluid Level

Other Services Perforate
 Elevation 1102'
 K.B. NA
 D.F. NA
 G.L. 1102'

Type Fluid Water
 Density / Viscosity NA
 Salinity - PPM Cl NA
 Max Recorded Temp NA
 Estimated Cement Top 0.0
 Equipment No. Location 104 Clearstone
 Recorded By Gary Winkish
 Witnessed By Mike Laymon

BORE-HOLE RECORD
 RUN No. BIT FROM TO SIZE WTG. FROM TO
 One 12.25" 6.00" 4.00 1200.0 2.875" 6.5# 0.0 1190.0

CASINGS RECORD
 TO 40.0
 FROM 0.0
 1190.0

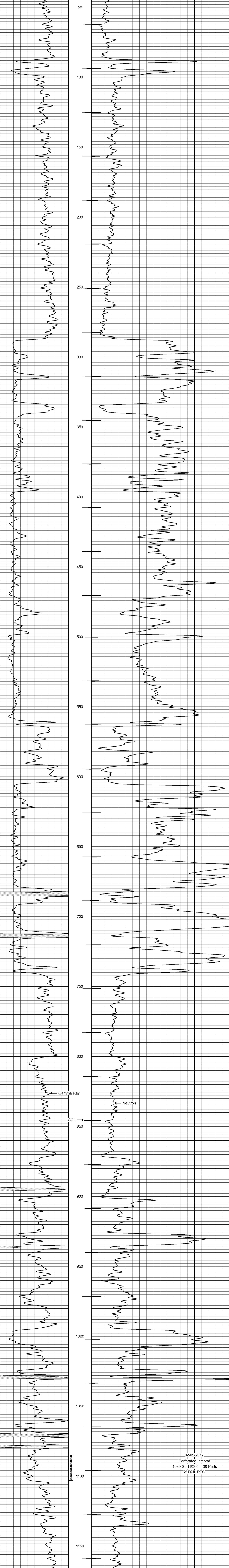
<<< Fold Here >>>

All interpretations are opinions based on inferences from electrical or other measurements and we cannot and do not guarantee the accuracy or correctness of any interpretation, and we shall not, except in the case of gross or willful negligence on our part, be liable or responsible for any loss, costs, damages, or expenses incurred or sustained by anyone resulting from any interpretation made by any of our officers, agents or employees. These interpretations are also subject to our general terms and conditions set out in our current Price Schedule.

Comments

Drilling Contractor :
 Laymon Oil II, LLC.

Database File: le robison 45-16.db
 Dataset Pathname: pass1
 Presentation Format: gr-n-ccl
 Dataset Creation: Thu Feb 02 12:46:12 2017 by Log SCH 111116
 Charted by: Depth in Feet scaled 1:240



02-02-2017
 Perforated Interval
 1085.0 - 1103.0 38 Perfs
 2" DML RTG