



**MIDWEST SURVEYS**  
 LOGGING - PERFORATING - CONSULTING SERVICES  
 P.O. Box 68, Osawatomie, KS 66064  
 913.755.2128

**GAMMA RAY / NEUTRON / CCL**

File No. \_\_\_\_\_

Company **Laymon Oil II, LLC**

Well **Glades No. 88-16**

Field **Vernon**

County **Woodson**

State **Kansas**

Location **165 FSL & 4125 FEL**

Other Services **Perforate**

Sec. **9**

Permament Datum **GL**

Log Measured From **GL**

Drilling Measured From **GL**

Temp. **24s**

Rge. **16s**

Elevation **1031'**

KB NA

DL NA

GL 1031'

Date **02-02-2017**

Run Number **One**

Depth Driller	1100.0
Depth Logger	1087.0
Bottom Logged Interval	1088.0
Top Log Interval	20.0
Fluid Level	F-111

Type Fluid	Water
Density / Viscosity	NA
Salinity - PPM Cl	NA
Max Recorded Temp	NA
Estimated Cement Top	0.0
Equipment No.	104
Recorded By	Steve Windisch
Missed By	Mike Lammon

ROD	BOREHOLE RECORD	TO	SIZE	WGT.	FROM	TO
No.	FROM	TO	12.25"	24.0#	0.0	40.0
One	8.00"	40.0	8.625"	28.75"	6.5#	1100.0
Two	6.00"	1100.0	2.875"	6.5#	0.0	1090.0

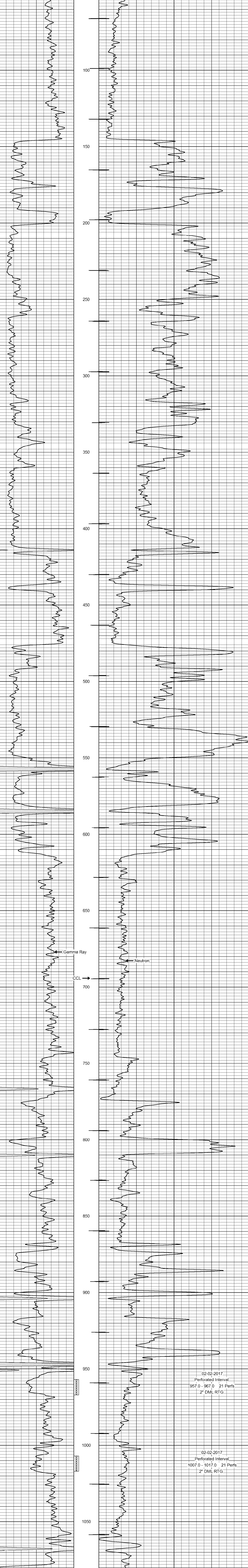
<<< Fold Here >>>

All interpretations are opinions based on inferences from electrical or other measurements and we cannot and do not guarantee the accuracy or correctness of any interpretation, and we shall not, except in the case of gross or willful negligence on our part, be liable or responsible for any loss, costs, damages, or expenses incurred or sustained by anyone resulting from any interpretation made by any of our officers, agents or employees. These interpretations are also subject to our general terms and conditions set out in our current Price Schedule.

Comments

Drilling Contractor :  
 Laymon Oil II, LLC.

Database File: glades 88-16.db  
 Dataset Pathname: pass1  
 Presentation Format: gr-n-ccl  
 Dataset Creation: Thu Feb 02 08:50:33 2017 by Log SCH 111116  
 Charted by: Depth in Feet scaled 1:240



0 Gamma Ray (cps) 150 100 Neutron (cps) 1900