



**MIDWEST SURVEYS**  
 LOGGING - PERFORATING - CONSULTING SERVICES  
 P.O. Box 68, Ocala, Florida, KS 68084  
 913.735.2128

**GAMMA RAY / NEUTRON / CCL**

File No. \_\_\_\_\_

Company **Piqua Petro, Inc.**

Well **Shannon No. 35-16**

Field **Humboldt - Chanute**

County **Allen** State **Kansas**

Location **1315 FNL & 950 FWL**

Other Services **Perforate**

Sec. **14** Twp. **25S** Rge. **17E**

Permanent Datum **GL** Elevation **1013'**

Log Measured From **GL** K.B. NA

Drilling Measured From **GL** D.F. NA

Date **12-16-2016** Elevation **GL 1013'**

Run Number **One**

Depth Logger **882.0**

Bottom Logged Interval **870.8 - 889.8**

Top Log Interval **20.0**

Fluid Level **Full**

Type Fluid **Water**

Density / Viscosity **NA**

Salinity - PPM Cl **NA**

Max. Recorded Temp **NA**

Estimated Cement Top **0.0**

Equipment No. **167** Location **Oswatimie**

Recorded By **Steve Mandich**

Missed By **Monta Lair**

BORE-HOLE RECORD

NO. BIT FROM TO SIZE WGT. FROM TO

One 9.875" 0.0 7.00" 17.0# 0.0 22.0

Two 5.825" 22.0 882.0 2.875" 6.5# 0.0 875.0

CASING RECORD

TO FROM TO

22.0 7.00" 0.0 17.0# 0.0 22.0

882.0 2.875" 6.5# 0.0 875.0

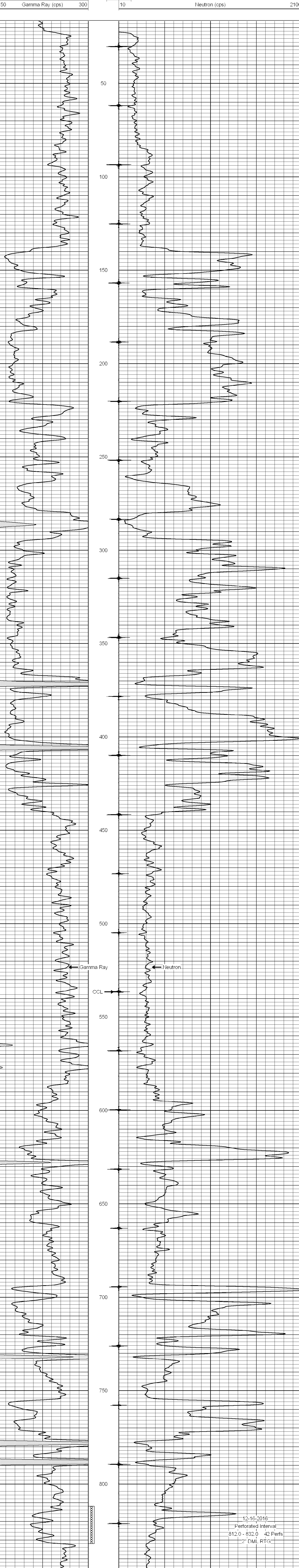
<<< Fold Here >>>

All interpretations are opinions based on inferences from electrical or other measurements and we cannot and do not guarantee the accuracy or correctness of any interpretation, and we shall not, except in the case of gross or willful negligence on our part, be liable or responsible for any loss, costs, damages, or expenses incurred or sustained by anyone resulting from any interpretation made by any of our officers, agents or employees. These interpretations are also subject to our general terms and conditions set out in our current Price Schedule.

Comments

Drilling Contractor :  
 John Leis Oilfield Services

Database File: shannon 35-15.db  
 Dataset Pathname: pass1  
 Presentation Format: gr-n-ccl  
 Dataset Creation: Fri Dec 16 10:55:52 2016 by Log SCH 111116  
 Charted by: Depth in Feet scaled 1:240



12-16-2016  
 Perforated Interval  
 812.0 - 832.0 42 Perfs  
 2" DML RTG