

**MIDWEST SURVEYS**  
 LOGGING - PERFORATING - CONSULTING SERVICES  
 P.O. Box 68, Osawatomie, KS 66064  
 913 / 755 - 2128

**GAMMA RAY / NEUTRON / CCL**

File No. \_\_\_\_\_

Company **Lakeshore Operating, LLC.**

Well **Sturdivan "3" No. LO-43**

Field **Vernon**

County **Woodson** State **Kansas**

Location **3493 FSL & 4128 FEL**

Other Services **Perforate**

Sec. 34 **SE-NE-SW-NW**

Perforation Datum **Top** Elevation **1077**

Log Measured From **GL** Elevation **1077**

Drilling Measured From **GL** Elevation **1077**

Date **07-22-2016**

Run Number **One**

Depth Driller **1092.0**

Depth Logger **1077.5**

Bottom Logged Interval **1078.5**

Top Log Interval **20.0**

Fluid Level **Full**

Type Fluid **Water**

Density / Viscosity **NA**

Salinity - PPM Cl **NA**

Max Recorded Temp **NA**

Estimated Cement Top **0.0**

Equipment No **102** Location **Osawatomie**

Recorded By **Garv Mordoch**

Witnessed By **Wesley Ketcham**

RUN **BOREHOLE RECORD**

NO. **BIT** **FROM** **TO** **SIZE** **WGT.** **FROM** **TO**

One **9.875"** **40.0** **7.00"** **170#** **0.0** **40.0** **1092.0**

Two **5.875"** **40.0** **2.875"** **65#** **0.0** **40.0** **1092.0**

CASINGS RECORD

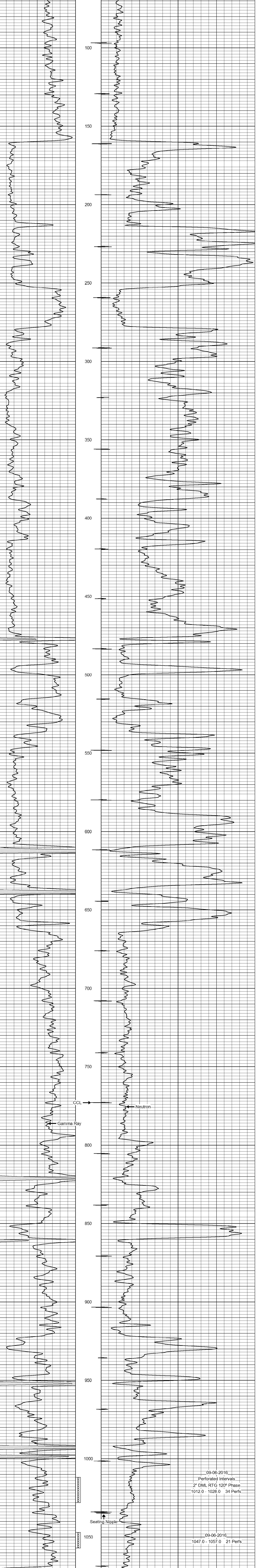
<<< Fold Here >>>

All interpretations are opinions based on inferences from electrical or other measurements and we cannot and do not guarantee the accuracy or correctness of any interpretation and we shall not, except in the case of gross or willful negligence on our part, be liable or responsible for any loss, costs, damages, or expenses incurred or sustained by anyone resulting from any interpretation made by any of our officers, agents or employees. These interpretations are also subject to our general terms and conditions set out in our current Price Schedule.

Comments

Drilling Contractor :  
 Jackman Oilfield Services

Database File: sturdivan3 43lo.db  
 Dataset Pathname: pass1  
 Presentation Format: gr-n-ccl  
 Dataset Creation: Fri Jul 22 12:08:03 2016 by Log SCH 111116  
 Charted by: Depth in Feet scaled 1:240



09-06-2016  
 Perforated Intervals  
 2" DML RTG 120° Phase  
 1012.0 - 1028.0 34 Perfs

09-06-2016  
 1047.0 - 1057.0 21 Perfs