



**DUAL INDUCTION
LL3/GR LOG**

Company **COLT ENERGY, INC.**
 Well **KNOX # W12**
 Field **MORAN**
 County **ALLEN** State **KANSAS**

Company **COLT ENERGY, INC.**
 Well **KNOX # W12**
 Field **MORAN**
 County **ALLEN**
 State **KANSAS**

Location: API #: 15-001-31344-0000
 NE NE NE NE
 320' FNL & 190' FEL
 SEC 23 TWP 25S RGE 19E
 Permanent Datum **GL** Elevation **1070'**
 Log Measured From **GL**
 Drilling Measured From **GL**

Other Services
CDL/SWN
 Elevation
 K.B. ---
 D.F. ---
 G.L. 1070'

Date	4-08-2015
Run Number	ONE
Depth Driller	924'
Depth Logger	921'
Bottom Logged Interval	919'
Top Log Interval	SURFACE
Casing Driller	8 5/8" @ 21'
Casing Logger	8 5/8" @ 21'
Bit Size	6 3/4"
Type Fluid in Hole	MUD
Density / Viscosity	
pH / Fluid Loss	
Source of Sample	
Rm @ Meas. Temp	
Rmf @ Meas. Temp	
Rmc @ Meas. Temp	
Source of Rmf / Rmc	
Rm @ BHT	
Time Circulation Stopped	
Time Logger on Bottom	
Maximum Recorded Temperature	
Equipment Number	OW2
Location	HOMINY, OK
Recorded By	LOWERY
Witnessed By	MS. BALLARD

<<< Fold Here >>>

All interpretations are opinions based on inferences from electrical or other measurements and we cannot and do not guarantee the accuracy or correctness of any interpretation, and we shall not, except in the case of gross or willful negligence on our part, be liable or responsible for any loss, costs, damages, or expenses incurred or sustained by anyone resulting from any interpretation made by any of our officers, agents or employees. These interpretations are also subject to our general terms and conditions set out in our current Price Schedule.

Comments

OW2-8810
CREW : SHAMBLES

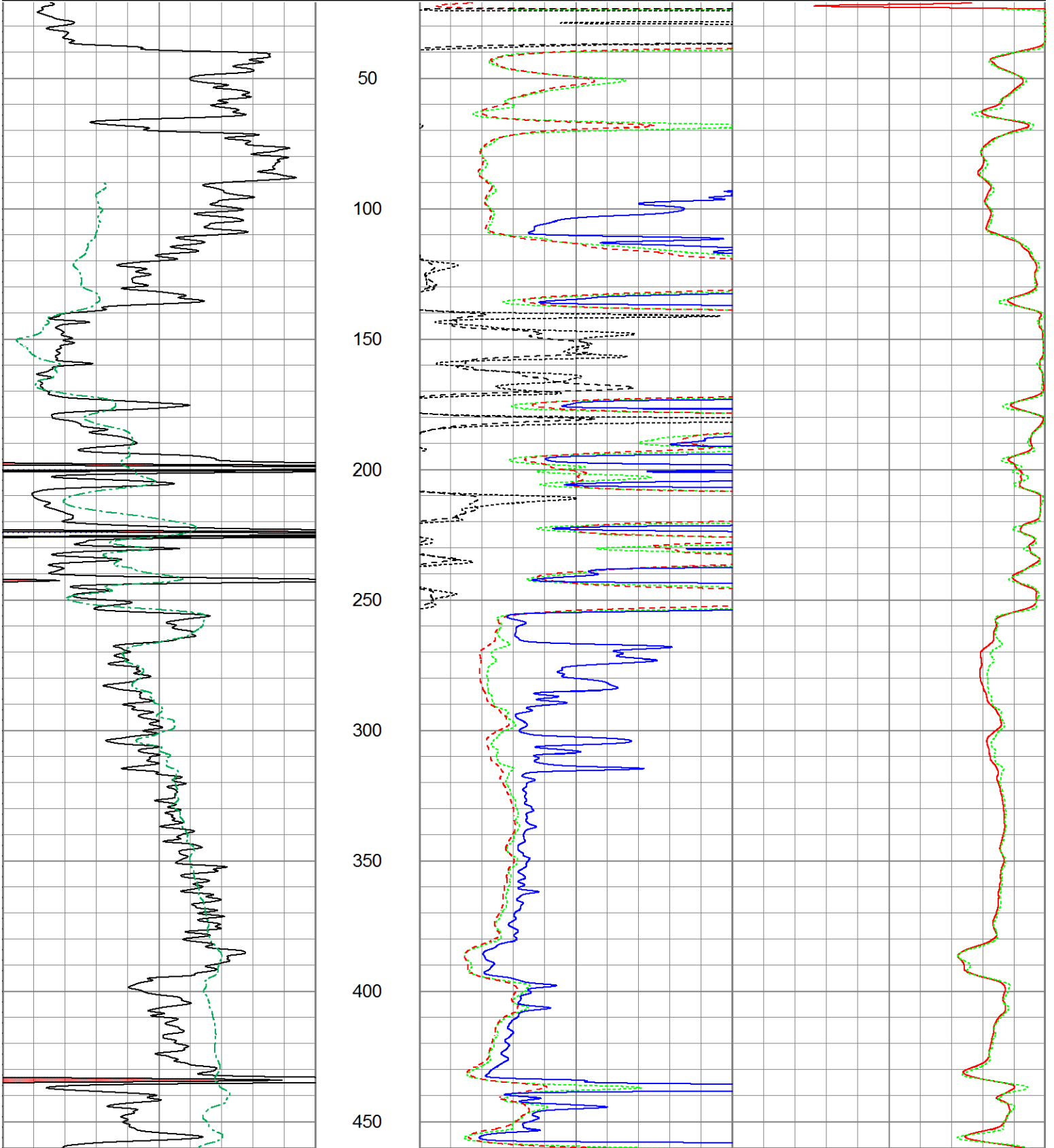


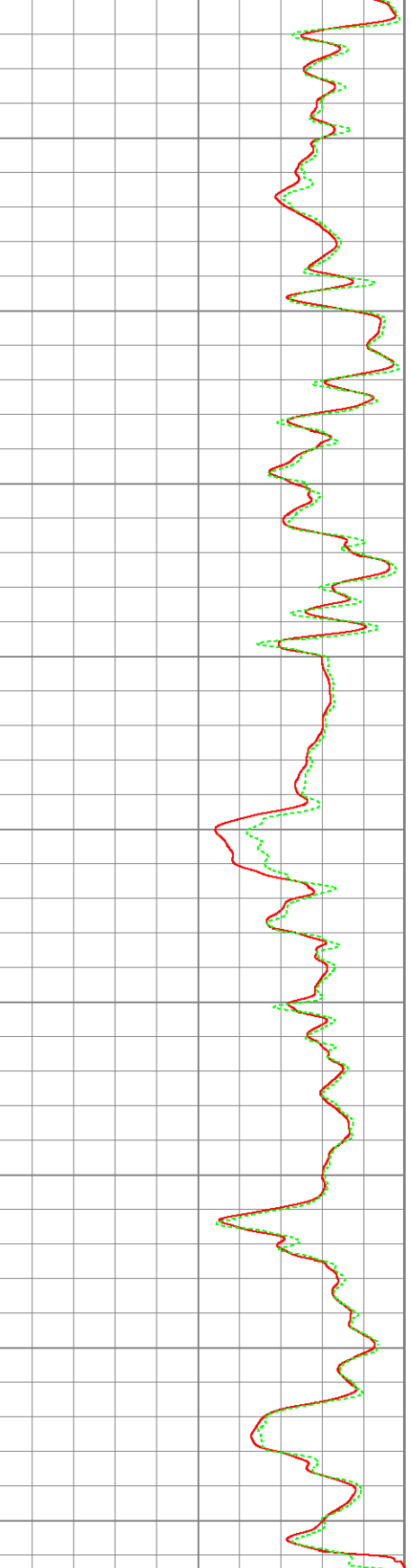
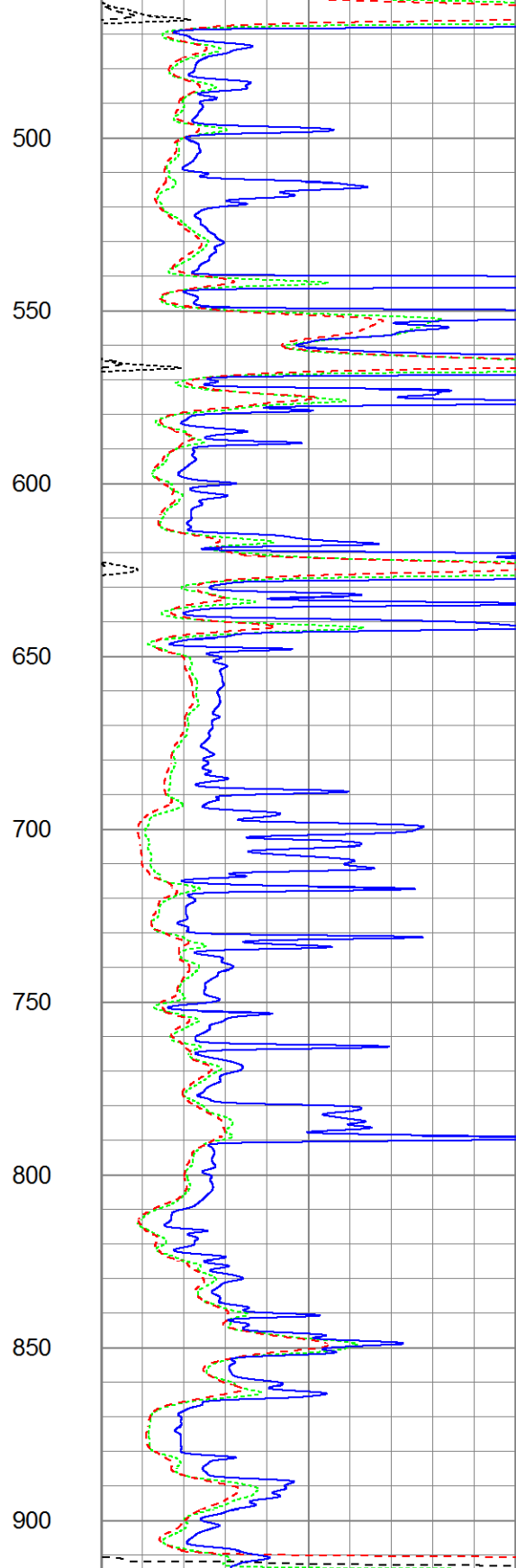
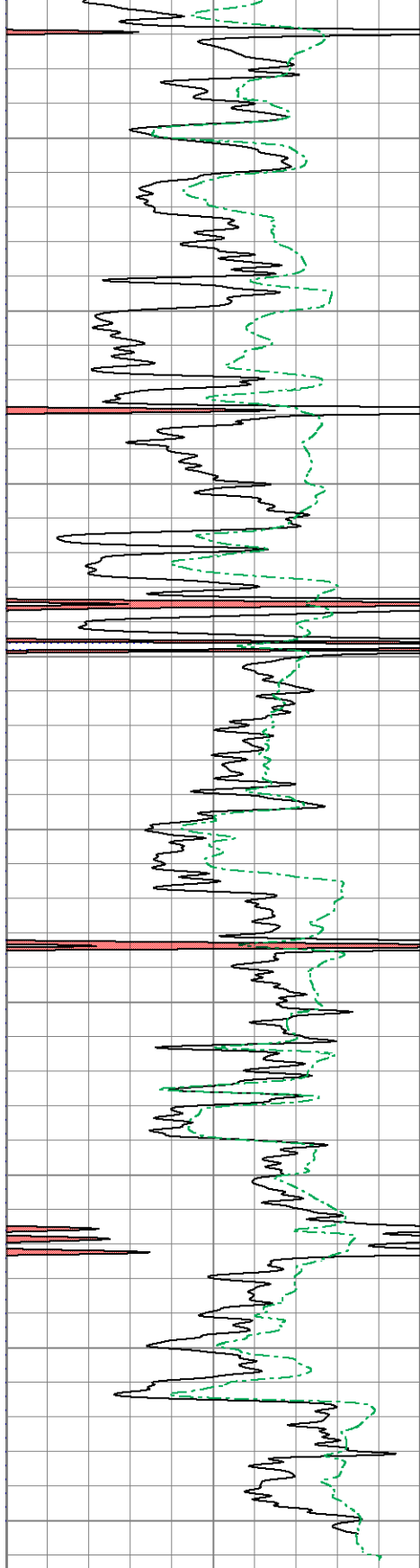
2" DIL SECTION

Database File ow2-8810 colt energy.db
 Dataset Pathname DIL/pass1.3
 Presentation Format dil2mdcol
 Dataset Creation Wed Apr 08 10:50:21 2015
 Charted by Depth in Feet scaled 1:600

0	GR (GAPI)	150
0	SP (mV)	200

1000	CILD (mmho/m)	0
1000	CILM (mmho/m)	0
0	RLL3 (Ohm-m)	50
0	RILM (Ohm-m)	50
0	RILD (Ohm-m)	50





0	GR (GAPI)	150
0	SP (mV)	200

1000	CILD (mmho/m)	0
1000	CILM (mmho/m)	0
0	RLL3 (Ohm-m)	50
0	RILM (Ohm-m)	50
0	RILD (Ohm-m)	50

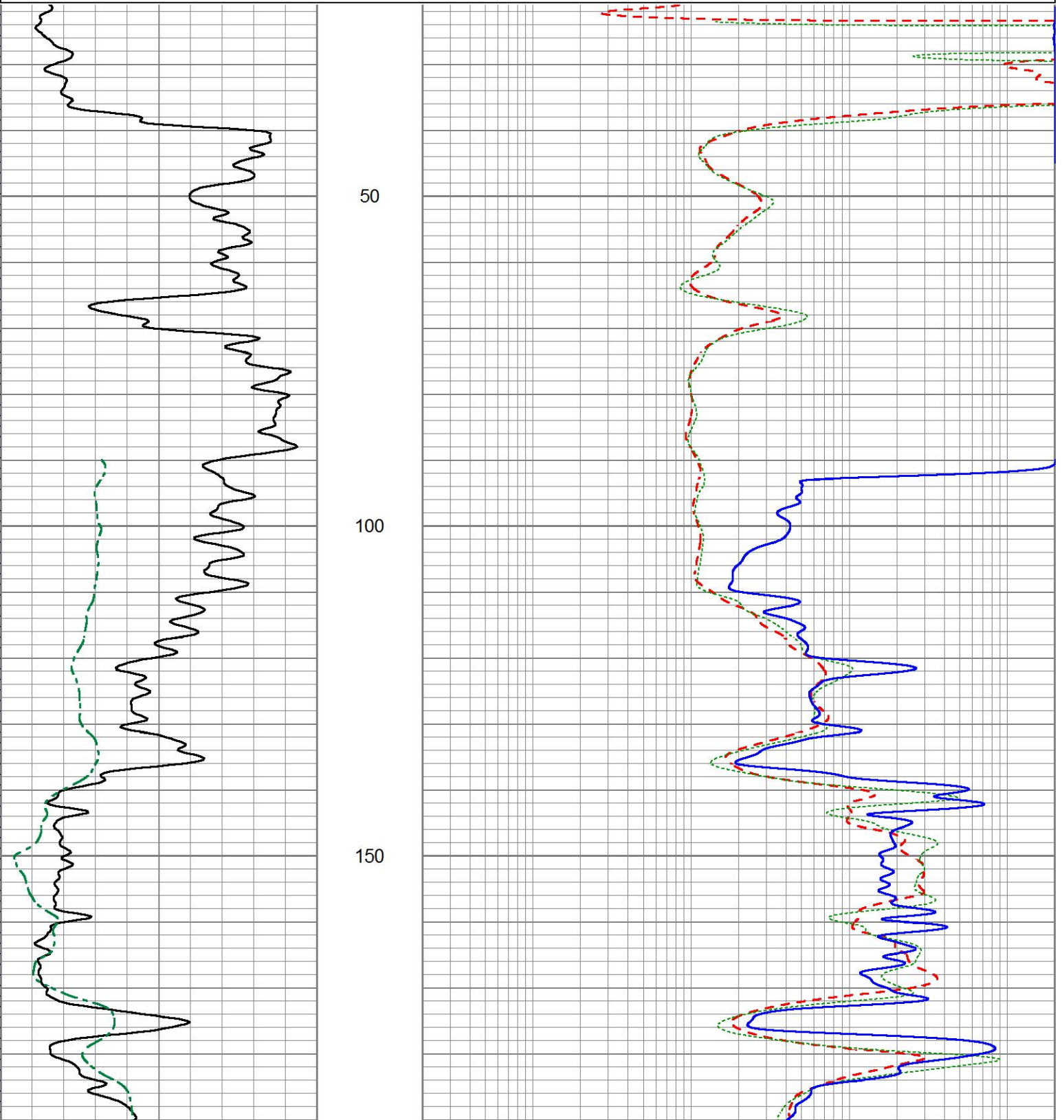


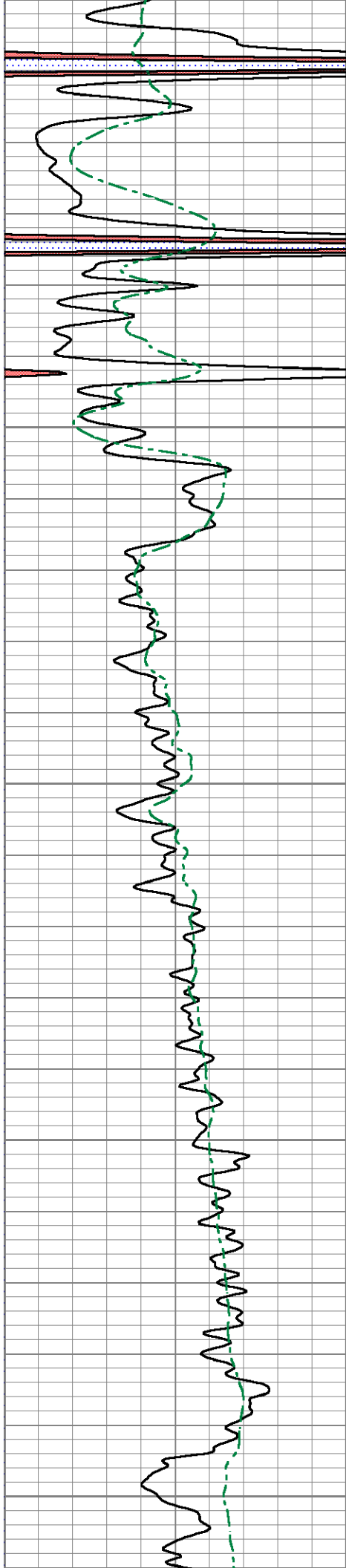
5" DIL SECTION

Database File ow2-8810 colt energy.db
Dataset Pathname DIL/pass1.2
Presentation Format dil5mdcol
Dataset Creation Wed Apr 08 10:49:33 2015
Charted by Depth in Feet scaled 1:240

0	Gamma Ray (GAPI)	150
0	SP (mV)	200

0.2	Deep Resistivity (Ohm-m)	2000
0.2	Medium Resistivity (Ohm-m)	2000
0.2	Shallow Resistivity (Ohm-m)	2000





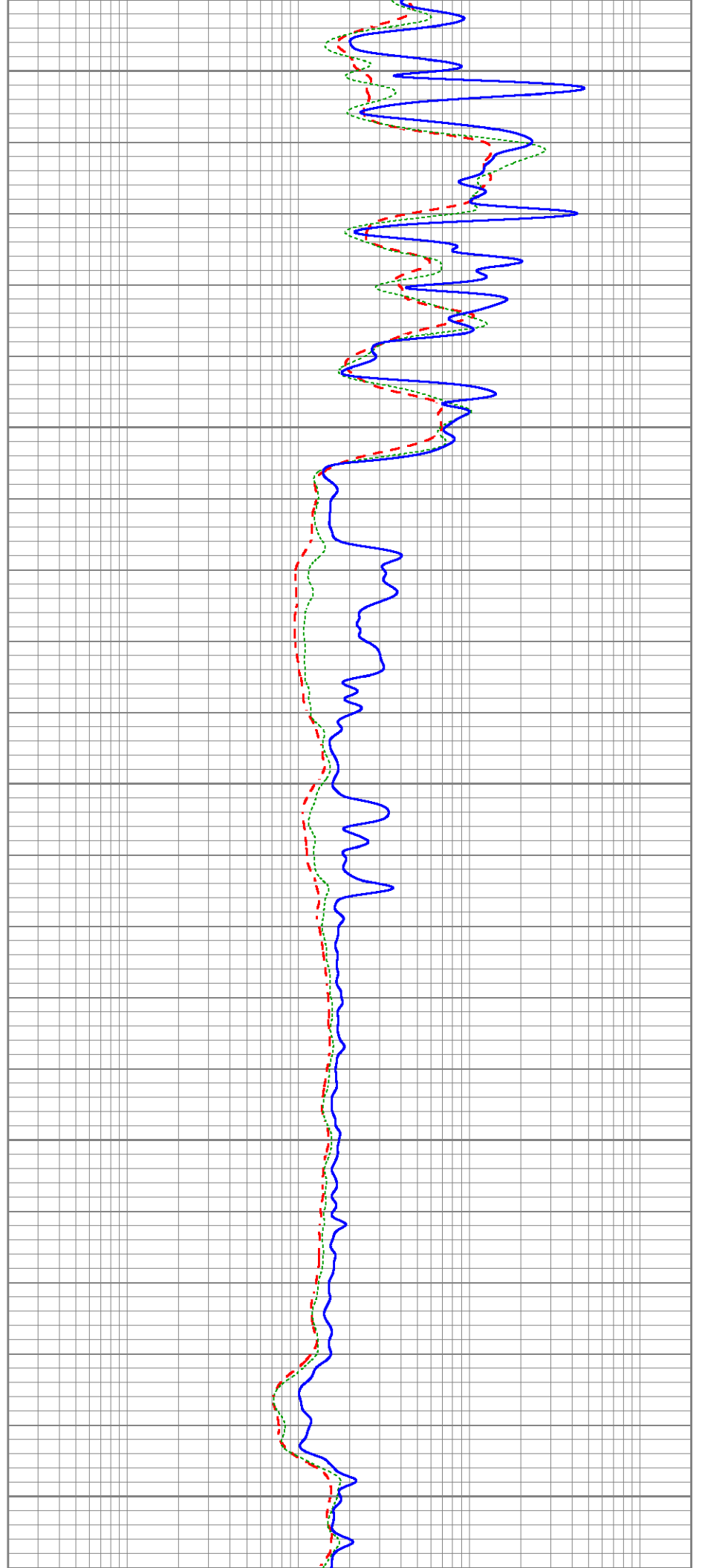
200

250

300

350

400



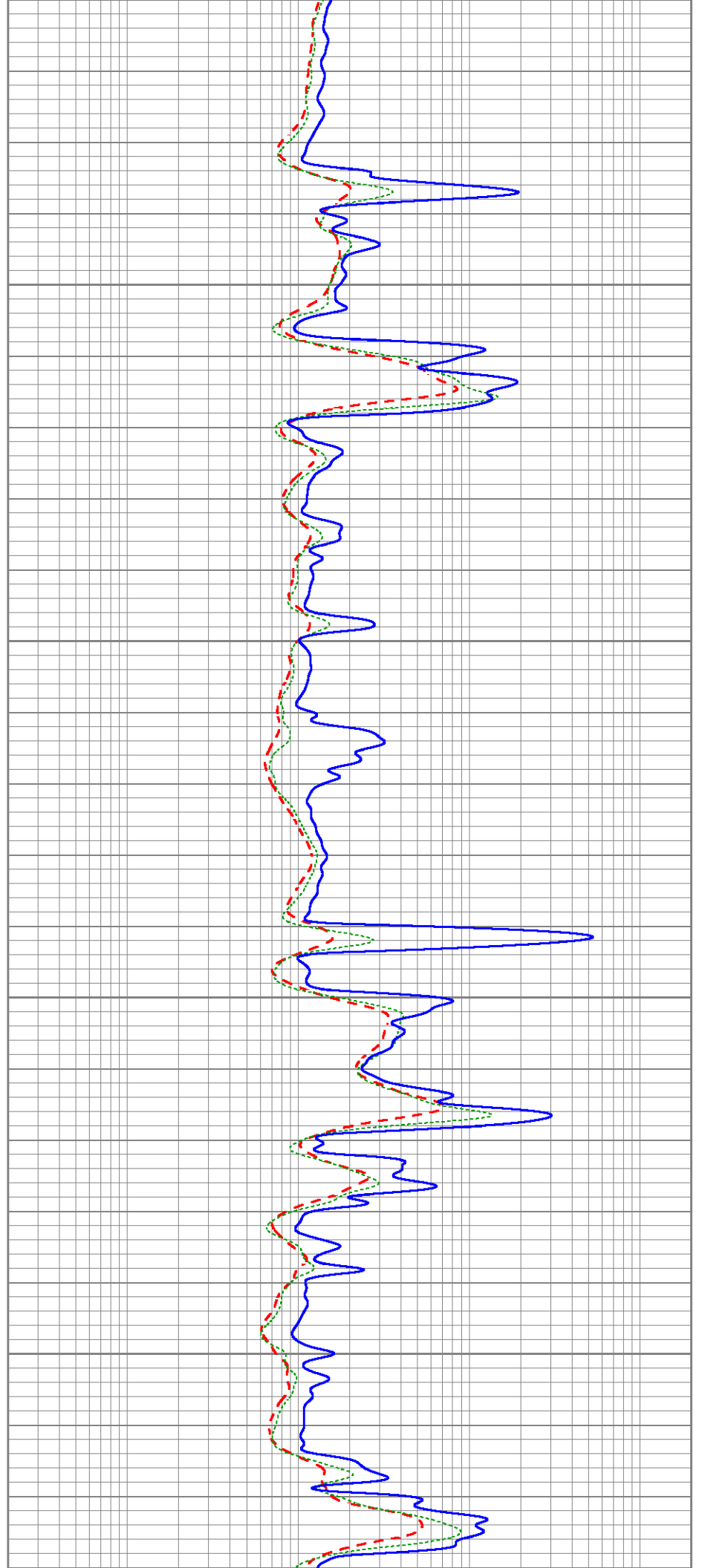


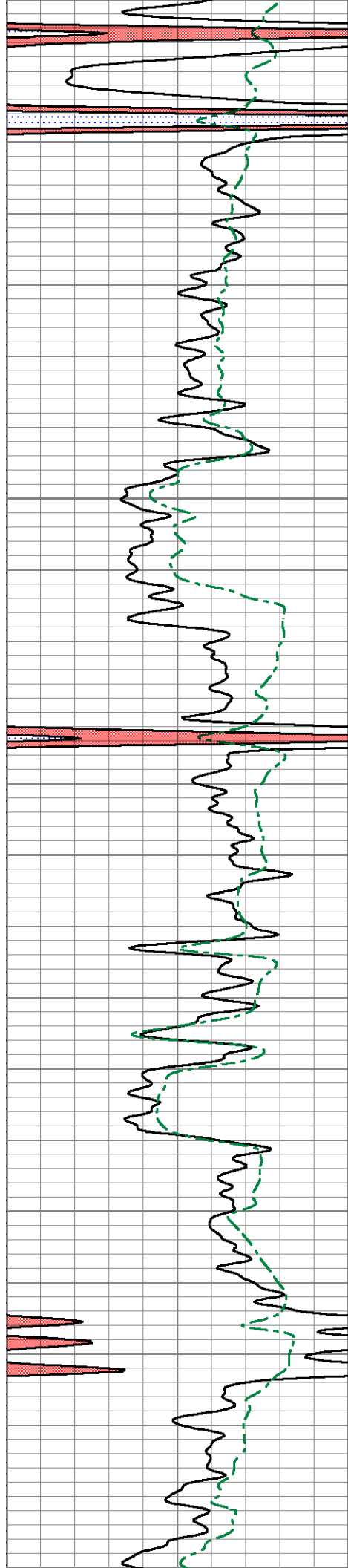
450

500

550

600





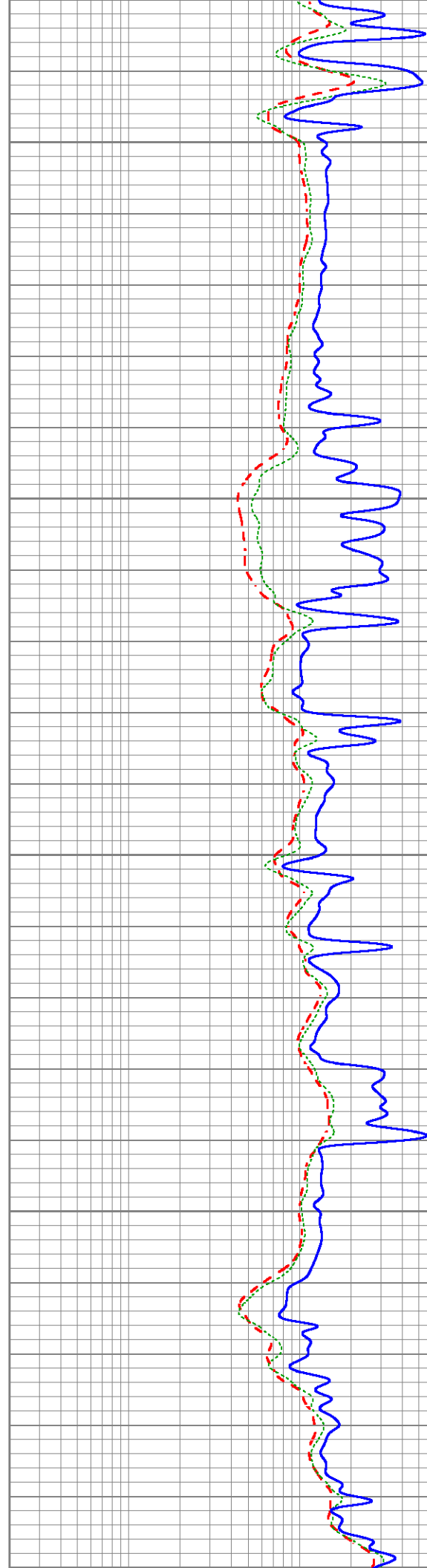
650

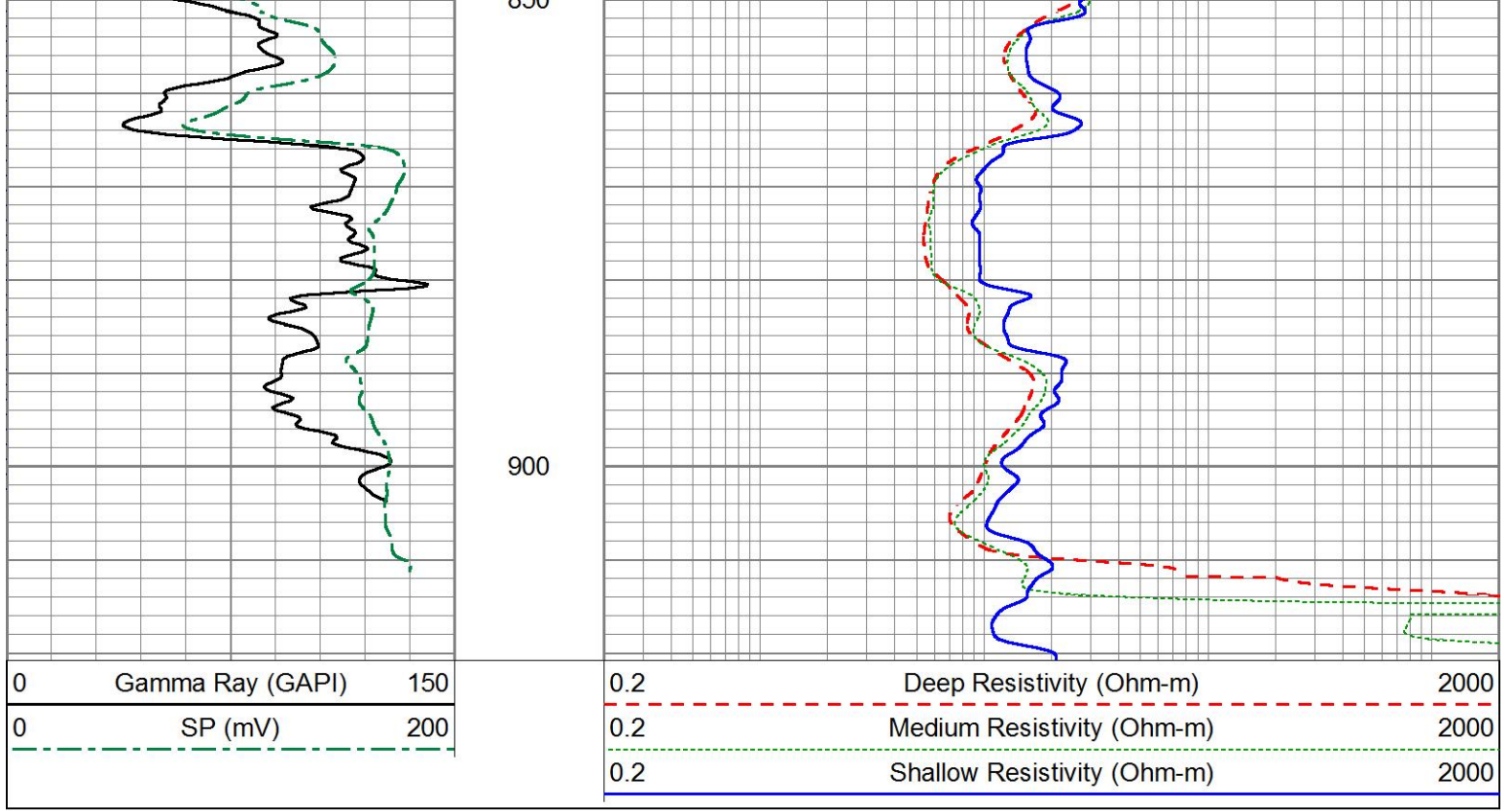
700

750

800

850





Sensor	Offset (ft)	Schematic	Description	Length (ft)	O.D. (in)	Weight (lb)
			<div style="display: flex; align-items: center;"> <div style="width: 10px; height: 10px; border: 1px solid black; margin-right: 5px;"></div> <div style="margin-left: 5px;">Cable-CableHead Isulation Sub</div> </div>	1.42	3.00	20.00
CILD SP	10.92 10.42		<div style="display: flex; align-items: center;"> <div style="width: 10px; height: 10px; border: 1px solid black; margin-right: 5px;"></div> <div style="margin-left: 5px;">DIL-GEAR (158) Dual Induction Electrical Log</div> </div>	21.36	4.00	395.00
CILM	7.00					
RLL3	1.65					

Dataset:	ow2-8810 colt energy.db: field/well/DIL/pass1
Total length:	22.78 ft
Total weight:	415.00 lb
O.D.:	4.00 in