



MIDWEST SURVEYS
 LOGGING - PERFORATING - CONSULTING SERVICES
 P.O. Box 68, Osawatomie, KS 68084
 913 / 735 - 2128

GAMMA RAY / NEUTRON / CCL

File No.

Company **Colt Energy, Inc.**

Well **Conger No. B10**

Field **Moran**

County **Allen**

State **Kansas**

Location

191' FSL & 636' FEL

SW-SE-SE-SE

Other Services Perforate

Sec. 14

Typ. 25s

Rge. 19e

Elevation 1075'

Permanent Datum

Log Measured From

Drilling Measured From

GL

GL

GL

GL

GL

GL

GL

GL

GL

GL

GL

GL

GL

GL

GL

GL

GL

GL

GL

GL

GL

GL

GL

GL

GL

GL

GL

GL

GL

Date	06-10-2015	Run Number	One
Depth Driller	970.0	Depth Logger	918.3
Bottom Logged Interval	917.3	Bottom Logged Interval	917.3
Top Log Interval	20.0	Top Log Interval	20.0
Fluid Level		Fluid Level	
Type Fluid	Water	Type Fluid	Water
Density / Viscosity	NA	Density / Viscosity	NA
Salinity - PPM Cl	NA	Salinity - PPM Cl	NA
Max Recorded Temp	NA	Max Recorded Temp	NA
Estimated Cement Top	0.0	Estimated Cement Top	0.0
Equipment No.	104	Equipment No.	104
Location	Osawatomie	Location	Osawatomie
Recorded By	Steve Windisch	Recorded By	Steve Windisch
Missed By	John Armanan	Missed By	John Armanan

BORE-HOLE RECORD	CASING RECORD
NO. BIT	NO. BIT
12.25"	12.25"
6.75"	6.75"
21.5	21.5
970.0	970.0
8.625"	8.625"
24.0#	24.0#
4.50"	4.50"
10.5#	10.5#
WT	WT
Set	Set
AT	AT
TO	TO
21.5	21.5
825.6	825.6
621.6	621.6

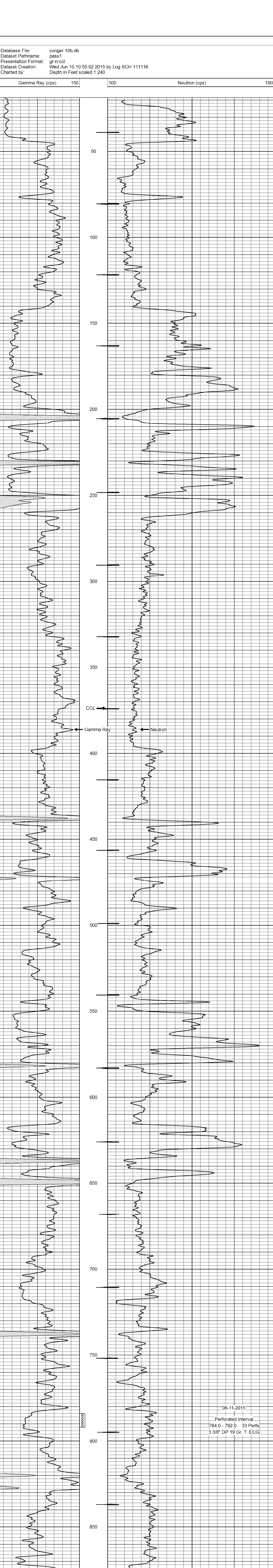
<<< Fold Here >>>

All interpretations are opinions based on inferences from electrical or other measurements and we cannot and do not guarantee the accuracy or correctness of any interpretation, and we shall not, except in the case of gross or willful negligence on our part, be liable or responsible for any loss, costs, damages, or expenses incurred or sustained by anyone resulting from any interpretation made by any of our officers, agents or employees. These interpretations are also subject to our general terms and conditions set out in our current Price Schedule.

Comments

Drilling Contractor :
Bar Drilling, LLC.

Database File: conger 10b.db
 Dataset Pathname: pass1
 Presentation Format: gr-n-ccl
 Dataset Creation: Wed Jun 10 10:55:02 2015 by Log SCH 111116
 Charted by: Depth in Feet scaled 1:240



06-11-2015
 Perforated Interval
 784.0 - 792.0 33 Perfs
 3 3/8" DP 19 Gr. T. ECG

Gamma Ray (cps) 150 Neutron (cps) 1900