



MIDWEST SURVEYS
 LOGGING - PERFORATING - CONSULTING SERVICES
 P.O. Box 68, Osawatomie, KS 68064
 913 / 735 - 2128

GAMMA RAY / NEUTRON / CCL

File No.

Company Laymon Oil II, LLC.

Well Kenneth Stockebrand No. 15-15

Field Owl Creek

County Woodson State Kansas

Location 165' FSL & 165' FEL

SE-SE-SE-SE

Sec. 17 Twp. 25S Rge. 16E

Permament Datum GL Elevation 994'

Log Measured From GL

Drilling Measured From GL

Date 06-26-2015

Run Number One

Depth Driller 1100.0

Bottom Logged Interval 1079.0

Top Log Interval 200.0

Fluid Level Full

Type Fluid Water

Density / Viscosity NA

Salinity - PPM Cl NA

Max Recorded Temp NA

Estimated Cement Top NA

Equipment No. Location 102 Osawatomie

Recorded By Gary Windisch

Witnessed By Mike Laymon

BORE-HOLE RECORD		CASING RECORD		TO
Run No.	BIT FROM	TO	SIZE FROM	WGT. FROM
One	12.25" 0.0	40.0	8.625" 0.0	28.0# 0.0
Two	6.00" 40.0	1100.0	2.875" 6.5#	0.0 1086.0

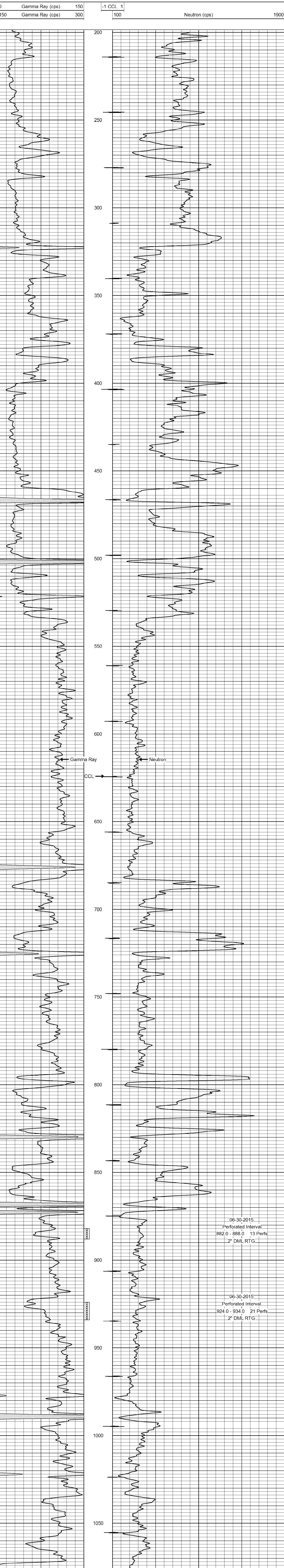
<<< Fold Here >>>

All interpretations are opinions based on inferences from electrical or other measurements and we cannot and do not guarantee the accuracy or correctness of any interpretation, and we shall not, except in the case of gross or willful negligence on our part, be liable or responsible for any loss, costs, damages, or expenses incurred or sustained by anyone resulting from any interpretation made by any of our officers, agents or employees. These interpretations are also subject to our general terms and conditions set out in our current Price Schedule.

Comments

Drilling Contractor :
 Laymon Oil II, LLC.

Database File: stockebrand 15-15k.db
 Dataset Pathname: pass1
 Presentation Format: gr-n-ccl
 Dataset Creation: Fri Jun 26 09:58:26 2015 by Log SCH 111116
 Charted by: Depth in Feet scaled 1:240



06-30-2015
 Perforated Interval
 882.0 - 888.0 13 Perfs.
 2" DML RTG

06-30-2015
 Perforated Interval
 924.0 - 934.0 21 Perfs.
 2" DML RTG

Gamma Ray (cps)		Neutron (cps)	
0	150	100	1900
0	150	100	1900