



Gamma Ray Ccl/Neutron Log

Company	McFadden Oil	Well	Lantz 3AX
Field	Allen	County	Allen
State	Kansas	Location:	SEC 36 TWP 24 RGE 20
AP#:	15-001-31393	Other Services	
Permanent Down Log Measured From	Ground Level	Elevation	N/A
Drilling Measured From	Ground Level	K.B. --- D.F. --- G.L. N/A	
Date	14Jul15	Run Number	One
Depth Driller	885'	Bottom Logger	884'
Bottom Logged Interval	883'	Open Hole Size	Surface
Top Log Interval	Surface	Type Fluid	Water
Estimated Cement Top	6.18'	Density / Viscosity	N/A
Time Well Ready	Upon Arrival	Max. Recorded Temp.	N/A
Equipment Number	OH4	Time Logger on Bottom	
Recorded By	Henny	Equipment Number	
Reviewed By	Ms. McFadden	Recorded By	OH4
Run Number	Bit	From	To
Size	Weight	From	To
Wgt/Ft	Top	Bottom	
Surface	Surface	T.D.	

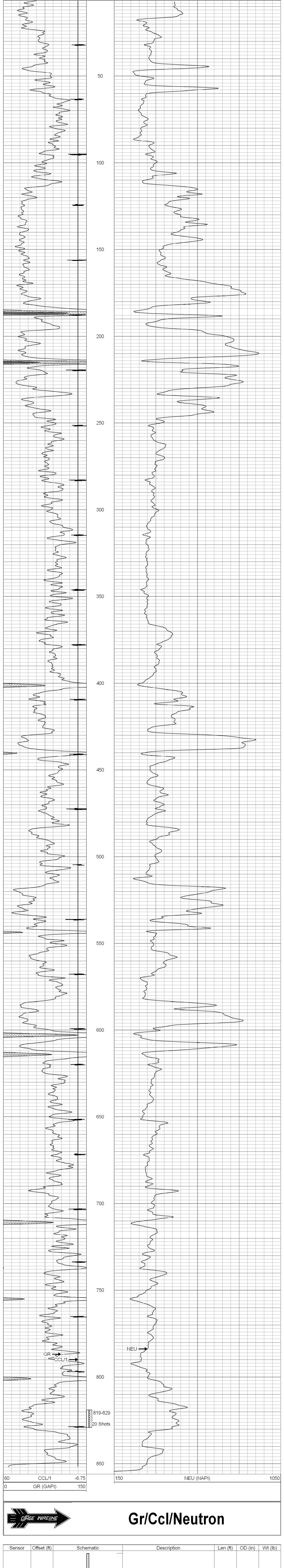
All interpretations are opinions based on inferences from electrical or other measurements and we cannot and do not guarantee the accuracy or correctness of any interpretation, and we shall not, except in the case of gross or willful negligence on our part, be liable or responsible for any loss, costs, damages, or expenses incurred or sustained by anyone resulting from any interpretation made by any of our officers, agents or employees. These interpretations are also subject to our general terms and conditions set out in our current Price Schedule.

Comments

File #4019grn-OW4
Thank You for using Osage Wireline!!

Crew: M. Kidd, T. Lunn

60	CCL/1	-6.75	150	NEU (NAPI)	1050
0	GR (GAPI)	150			



Gr/Ccl/Neutron

Sensor	Offset (ft)	Schematic	Description	Len (ft)	OD (in)	Wt (lb)
GR	5.83					
CCL	4.17					
NEU	1.33					
COSGR/NEU/CCL-COSMOS (0001) COSMOS 1 11/16 GR/NEU/CCL				6.88	1.69	20.00

Dataset: 4019grn-ow4 lantz 3ax.db: field/well/run1/pass1
 Total Length: 6.88 ft
 Total Weight: 20.00 lb
 O.D.: 1.69 in