



**GAMMA RAY  
NEUTRON  
COMPLETION LOG**

Company D-ROC OIL COMPANY, LLC  
 Well STOCKEBRAND #N1-W2  
 Field VERNON  
 County WOODSON  
 State KANSAS

Company D-ROC OIL COMPANY, LLC  
 Well STOCKEBRAND #N1-W2  
 Field VERNON  
 County WOODSON State KANSAS

Location: API # : 15-207-29268-00-00 Other Services  
 940' FNL & 1812' FEL  
 NW SE NW NE  
 SEC 20 TWP 24S RGE 16E  
 Permanent Datum G.L. Elevation 1093'EST  
 Log Measured From G.L. K.B.  
 Drilling Measured From G.L. D.F.  
 G.L. 1093'EST.

Date	9-8-2015		
Run Number	1-NEWWELL		
Depth Driller			
Depth Logger	1059.3'		
Top Log Interval	473.9'		
Bottom Logged Interval	1059.3'		
Fluid Level	FULL		
Type Fluid	WATER		
Production Casing	2 7/8" @ T.D.	@	@
Max. Recorded Temp.			
Estimated Cement Top			
Calculated Cement Top			
Amount & Type Cement			
Amount & Type Admix			
Drilling Contractor	WOCO DRILLING		
Equipment Number	107		
Location			
Recorded By	UDEN, D.		
Witnessed By	LEIS, V.		

<<< Fold Here >>>

All interpretations are opinions based on inferences from electrical or other measurements and we cannot and do not guarantee the accuracy or correctness of any interpretation, and we shall not, except in the case of gross or willful negligence on our part, be liable or responsible for any loss, costs, damages, or expenses incurred or sustained by anyone resulting from any interpretation made by any of our officers, agents or employees. These interpretations are also subject to our general terms and conditions set out in our current Price Schedule.

Comments

THANK YOU

Sensor	Offset (ft)	Schematic	Description	Len (ft)	OD (in)	Wt (lb)

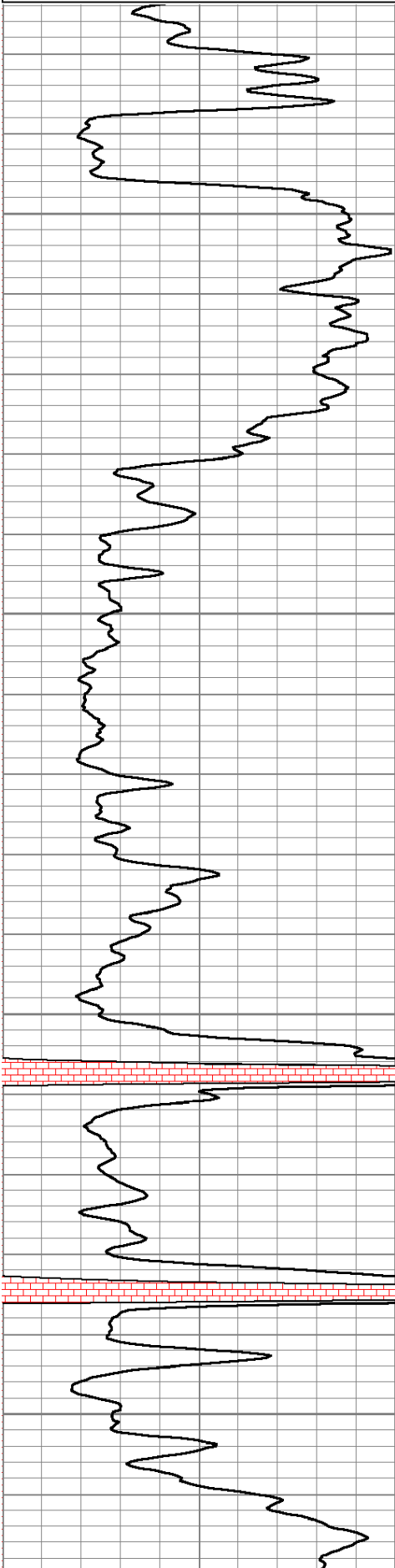
GR	7.59	GR-TITAN_169 (TIT169_001) Titan 1 11/16" Gamma Ray	4.75	1.69	20.00
CCL	5.05	CCL-TITAN_169 (TIT169) Titan 1 11/16" Logging CCL	1.83	1.69	7.50
NEU	0.63	NEU-TITAN_169 (TIT169_001) Titan 1 11/16" Neutron	4.33	1.69	20.00

Dataset: stockebrand #n1-w2.db: field/well/run1/pass2  
 Total Length: 10.92 ft  
 Total Weight: 47.50 lb  
 O.D. 1.69 in

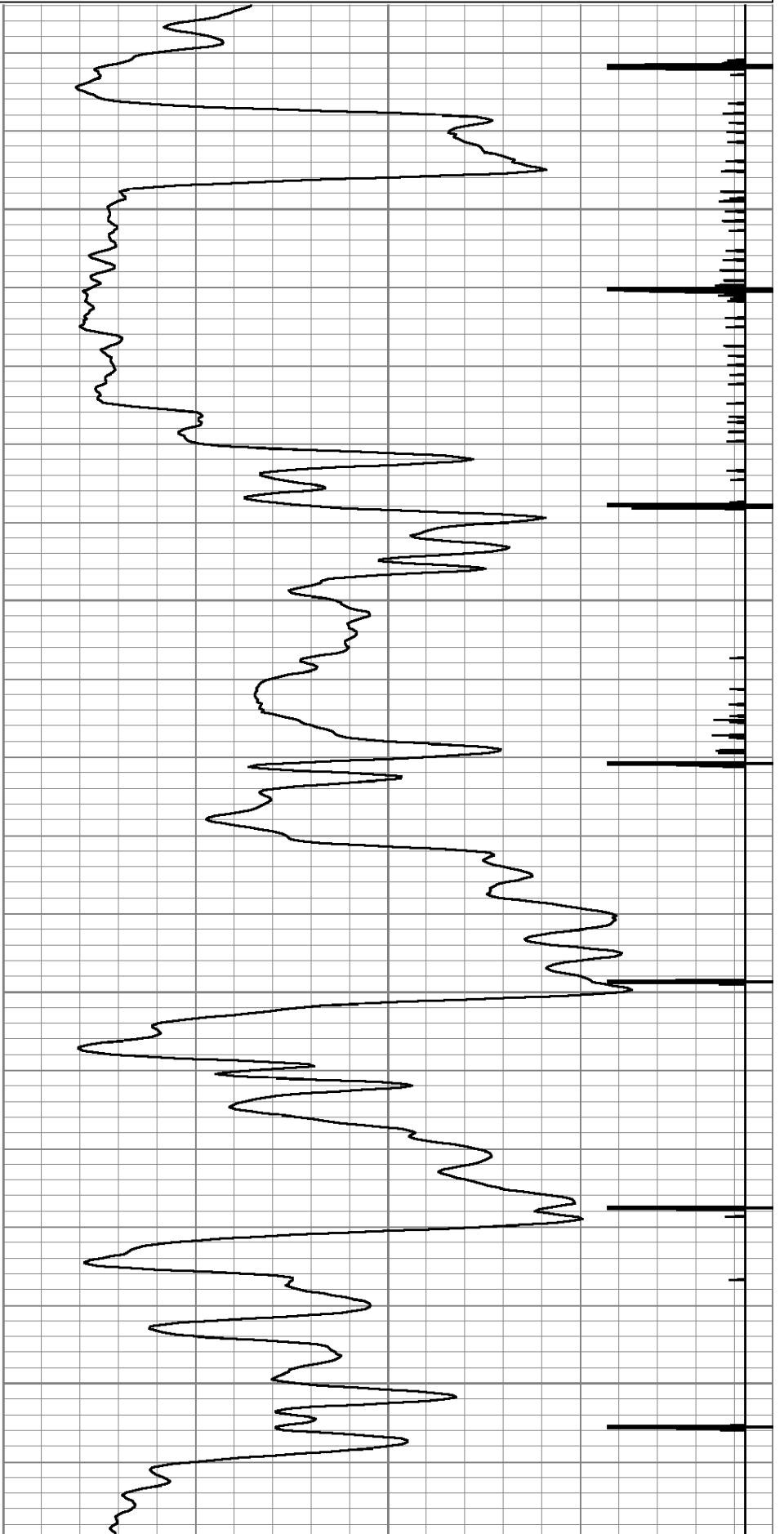
Database File: e:\stockebrand #n1-w2.db  
 Dataset Pathname: pass2  
 Presentation Format: gr-n-ccl

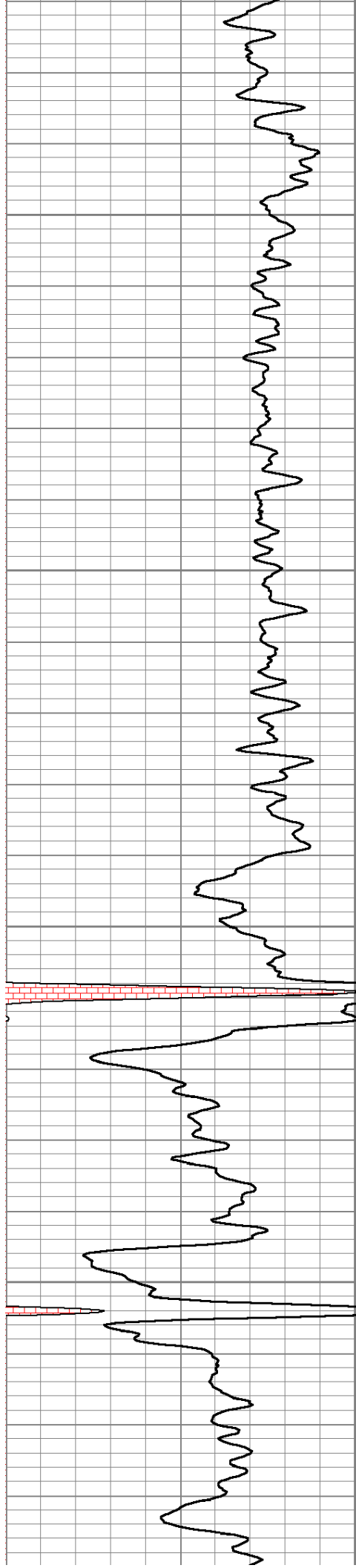
0	GR	150
150	gr	300

100	NEU	1500
13	CCL	-1



500  
550  
600  
650



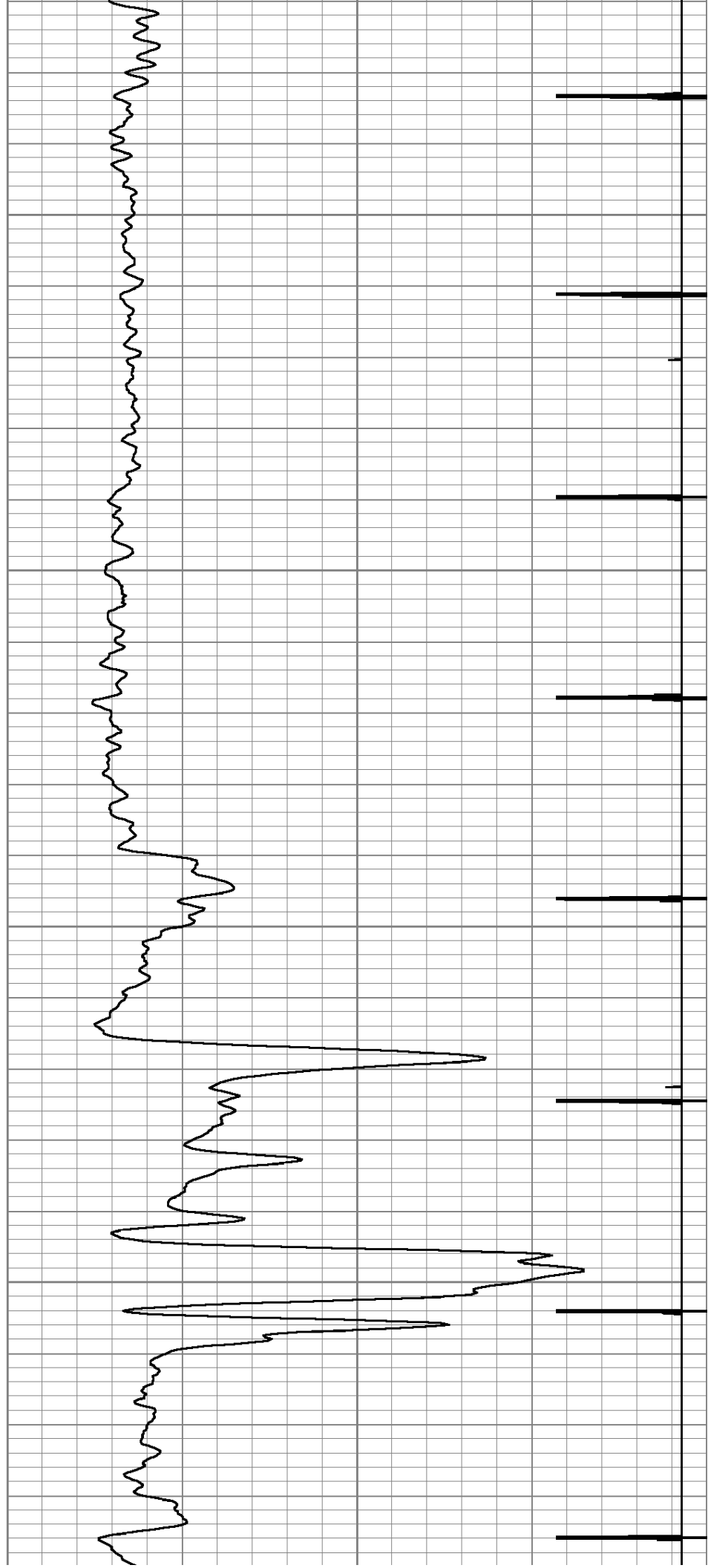


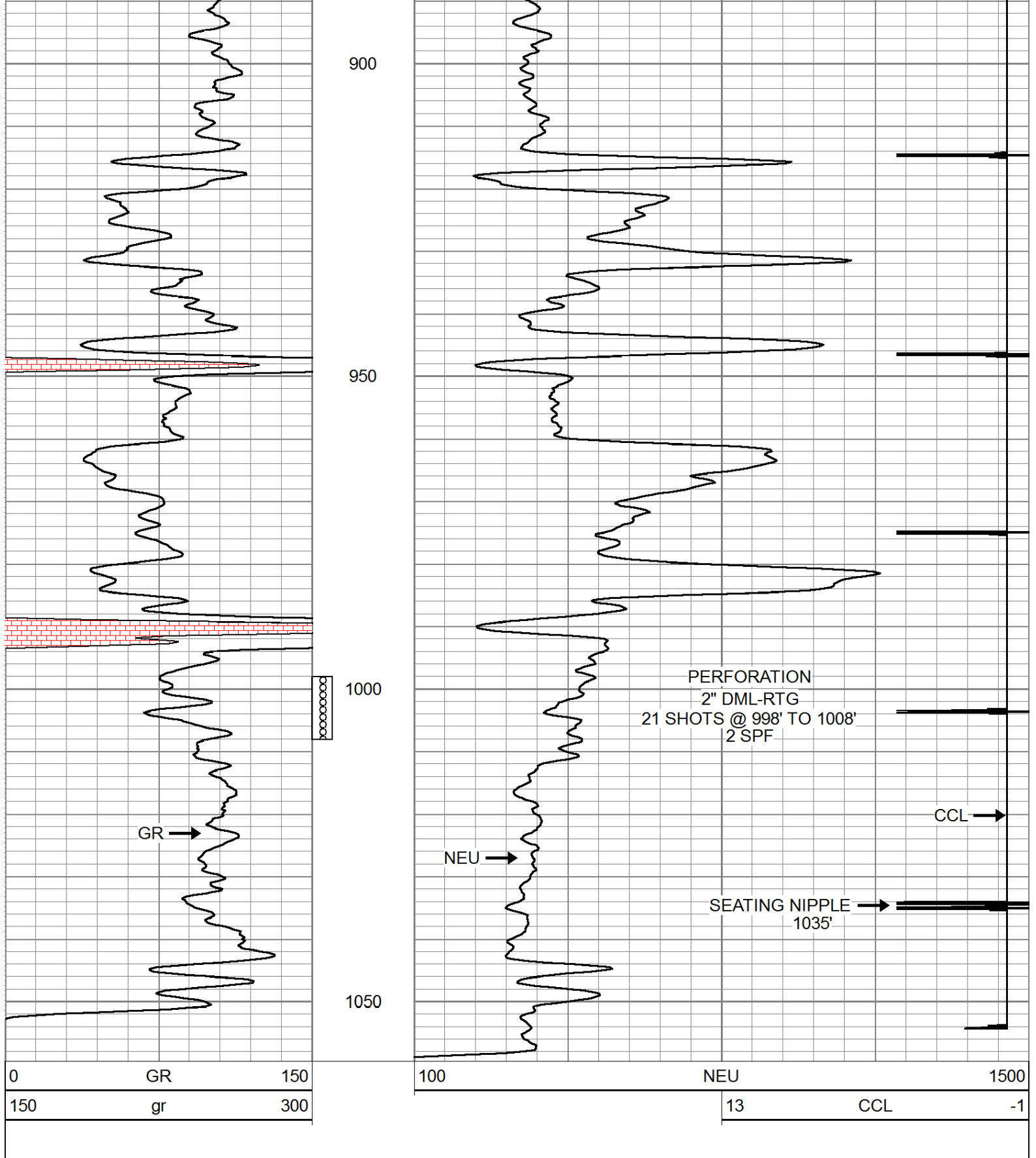
700

750

800

850





Company	D-ROC OIL COMPANY, LLC
Well	STOCKEBRAND #N1-W2
Field	VERNON
County	WOODSON SEC. 20 TWP. 24S RGE. 16E
State	KANSAS
Date	9-8-2015

