



**GAMMA RAY
NEUTRON
COMPLETION LOG**

Company D-ROC OIL COMPANY, LLC
 Well STOCKEBRAND #WSW-1
 Field VERNON
 County WOODSON
 State KANSAS

Company D-ROC OIL COMPANY, LLC
 Well STOCKEBRAND #WSW-1
 Field VERNON
 County WOODSON State KANSAS

Location: API # : 15-207-29270-00-00

Other Services

1260' FNL & 1380' FEL
 SE SE NW NE
 SEC 20 TWP 24S RGE 16E

Permanent Datum	G.L.	Elevation	1084'EST	Elevation
Log Measured From	G.L.			K.B.
Drilling Measured From	G.L.			D.F.
				G.L. 1084'EST.

Date	9-8-2015		
Run Number	1-NEWWELL		
Depth Driller			
Depth Logger	664.9'		
Top Log Interval	SURFACE		
Bottom Logged Interval	664.9'		
Fluid Level	FULL		
Type Fluid	WATER		
Production Casing	5.5" @ T.D.	@	@
Max. Recorded Temp.			
Estimated Cement Top			
Calculated Cement Top			
Amount & Type Cement			
Amount & Type Admix			
Drilling Contractor	WOCO DRILLING		
Equipment Number	107		
Location			
Recorded By	UDEN, D.		
Witnessed By	LEIS, D.		

<<< Fold Here >>>

All interpretations are opinions based on inferences from electrical or other measurements and we cannot and do not guarantee the accuracy or correctness of any interpretation, and we shall not, except in the case of gross or willful negligence on our part, be liable or responsible for any loss, costs, damages, or expenses incurred or sustained by anyone resulting from any interpretation made by any of our officers, agents or employees. These interpretations are also subject to our general terms and conditions set out in our current Price Schedule.

Comments

THANK YOU

Sensor	Offset (ft)	Schematic	Description	Len (ft)	OD (in)	Wt (lb)

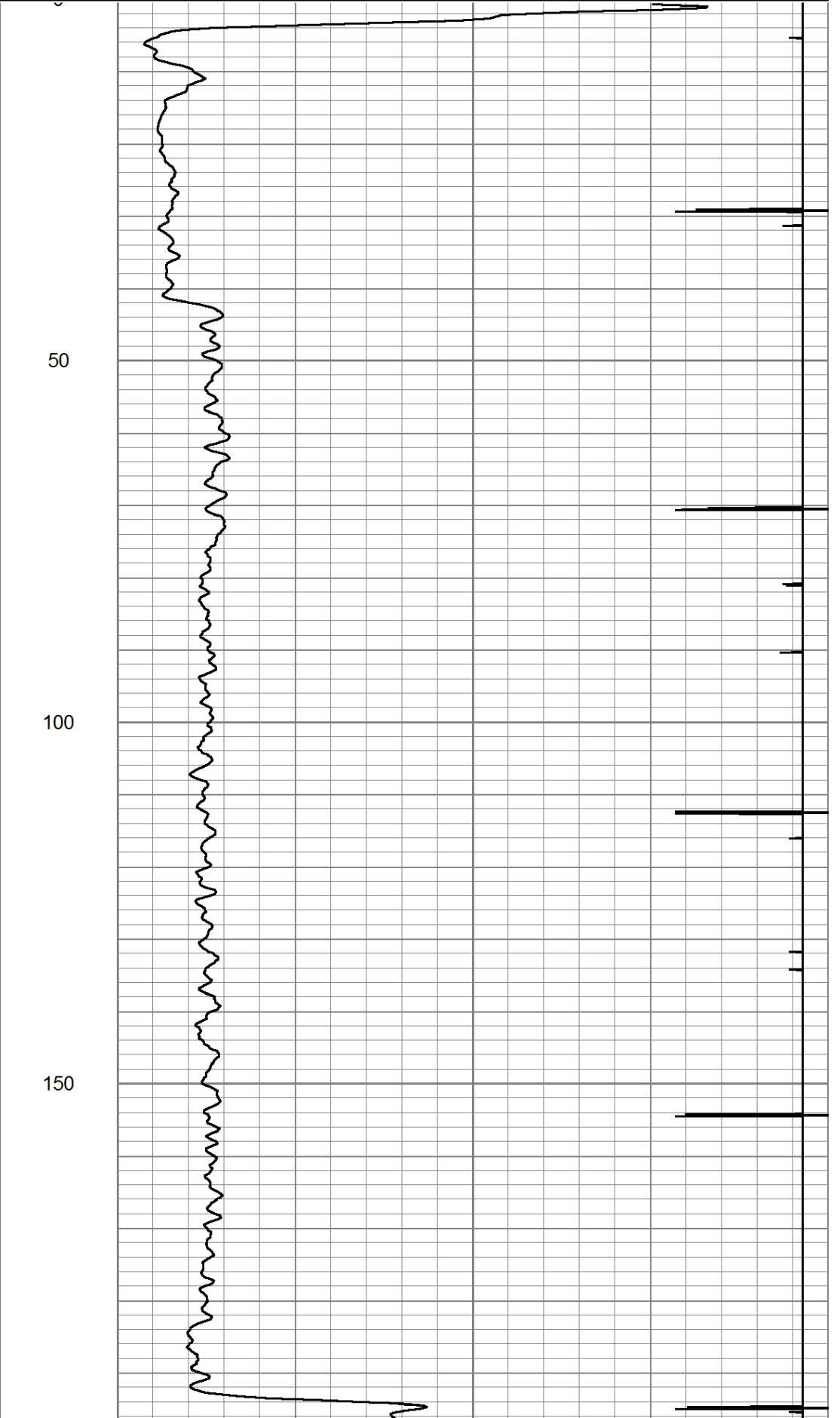
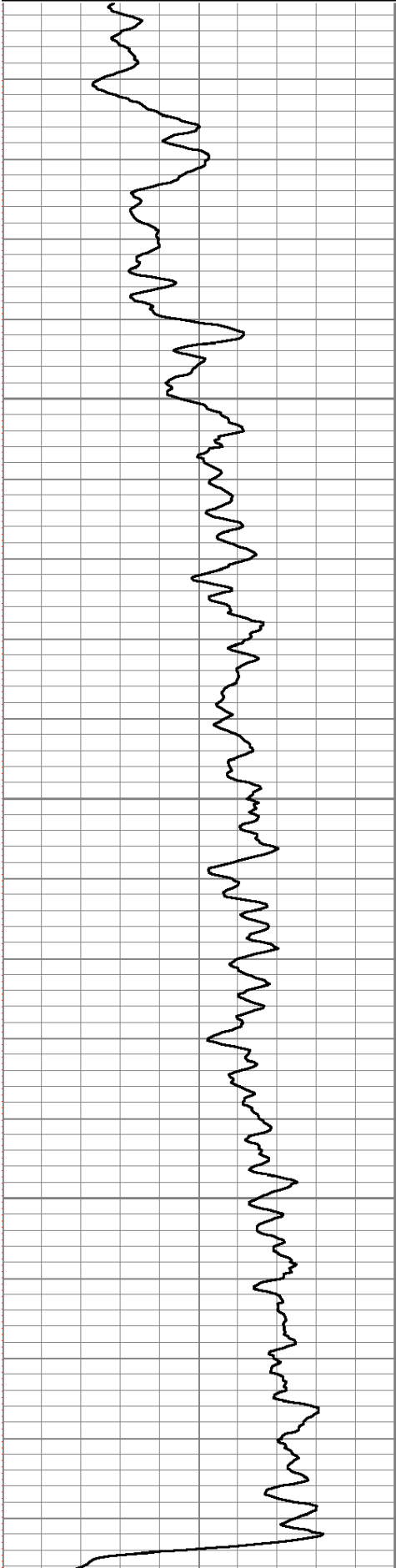
GR	7.59		GR-TITAN_169 (TIT169_001) Titan 1 11/16" Gamma Ray	4.75	1.69	20.00
CCL	5.05		CCL-TITAN_169 (TIT169) Titan 1 11/16" Logging CCL	1.83	1.69	7.50
NEU	0.63		NEU-TITAN_169 (TIT169_001) Titan 1 11/16" Neutron	4.33	1.69	20.00

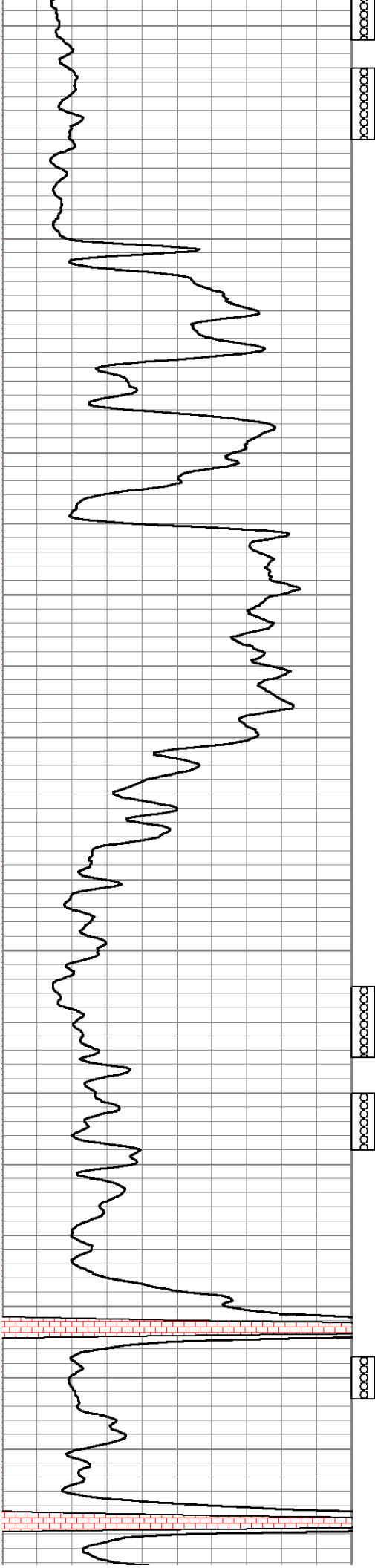
Dataset: stockebrand #wsw-1.db: field/well/run1/pass1
 Total Length: 10.92 ft
 Total Weight: 47.50 lb
 O.D. 1.69 in

Database File: e:\stockebrand #wsw-1.db
 Dataset Pathname: pass1
 Presentation Format: gr-n-ccl

0	GR	150
150	gr	300

100	NEU	1500
13	CCL	-1





450

500

550

600

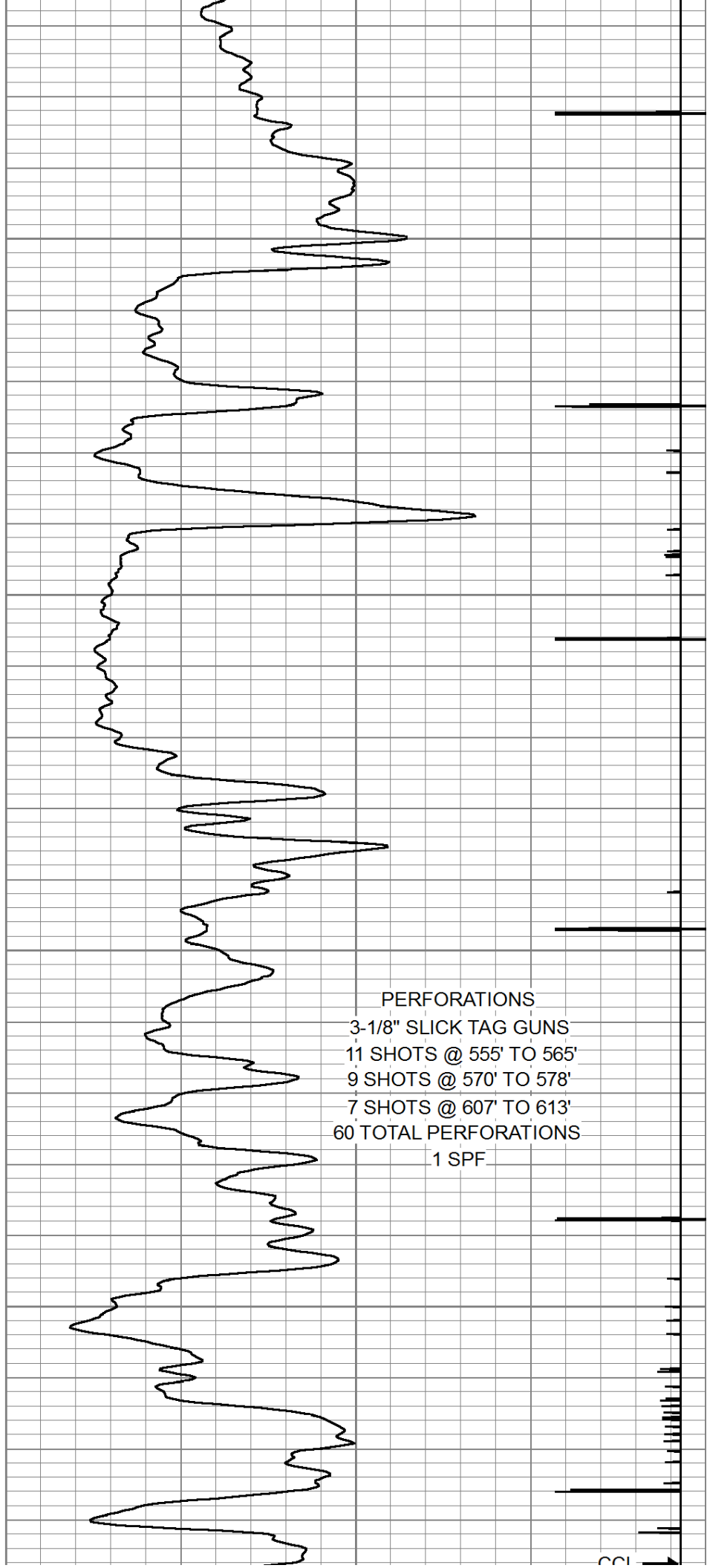
XXXXXX

XXXXXXXXXX

XXXXXXXXXX

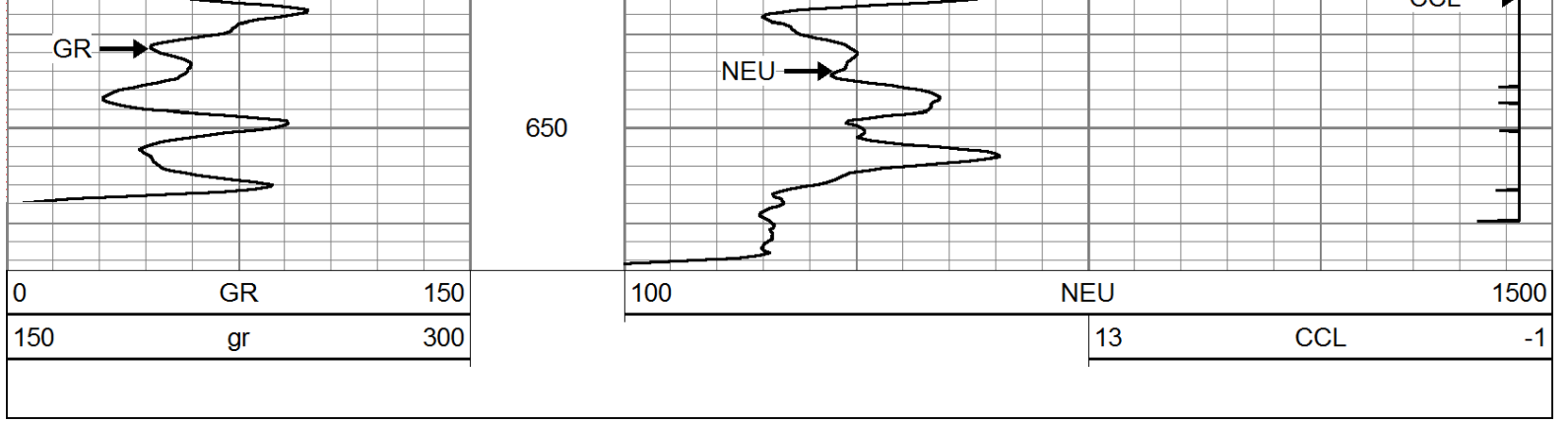
XXXXXX

XXXXXX



PERFORATIONS
3-1/8" SLICK TAG GUNS
11 SHOTS @ 555' TO 565'
9 SHOTS @ 570' TO 578'
7 SHOTS @ 607' TO 613'
60 TOTAL PERFORATIONS
1 SPF

CC



Company	D-ROC OIL COMPANY, LLC
Well	STOCKEBRAND #WSW-1
Field	VERNON
County	WOODSON SEC. 20 TWP. 24S RGE. 16E
State	KANSAS
Date	9-8-2015