



MIDWEST SURVEYS
LOGGING - PERFORATING - CONSULTING SERVICES
P.O. Box 68, Osawatomie, KS 66064
913-755-2128

GAMMA RAY / NEUTRON / CCL

File No.

Company **D&W Oil**

Well **Brinkmyer No. 1nj-2**

Field **Humboldt - Chanute**

County **Allen** State **Kansas**

Location

1300' FSL & 1320' FEL

N/2-N/2-S/2-SE

Sec. **35**

Permit/Datum

Log Measured From

Drilling Measured From

GL

GL

GL

GL

GL

GL

GL

GL

GL

GL

GL

GL

GL

GL

GL

GL

GL

GL

GL

GL

GL

GL

GL

GL

GL

GL

GL

GL

GL

Date	12-08-2015
Run Number	One
Depth Driller	890.0
Depth Logger	889.2
Bottom Logged Interval	888.2
Top Log Interval	20.0
Fluid Level	Full
Type Fluid	Water
Density / Viscosity	NA
Salinity - PPM Cl	NA
Max Recorded Temp	NA
Estimated Cement Top	0.0
Equipment No.	104
Location	Osawatomie
Recorded By	Steve Wrielsch
Witnessed By	David Wrestler

BORE-HOLE RECORD	TO	SIZE	WGT	FROM	TO
No.	BIT	FROM	TO	FROM	TO
One	9.875"	20.0	7.00"	0.0	20.0
Two	5.625"	20.0	880.0	2.875	6.5
					0.0
					676.0

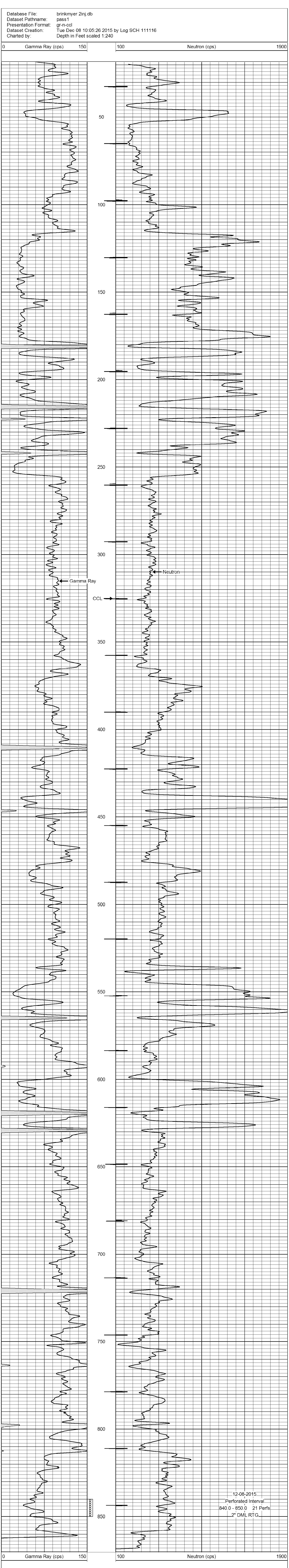
<<< Fold Here >>>

All interpretations are opinions based on inferences from electrical or other measurements and we cannot and do not guarantee the accuracy or correctness of any interpretation, and we shall not, except in the case of gross or willful negligence on our part, be liable or responsible for any loss, costs, damages, or expenses incurred or sustained by anyone resulting from any interpretation made by any of our officers, agents or employees. These interpretations are also subject to our general terms and conditions set out in our current Price Schedule.

Comments

Drilling Contractor :
David Wrestler

Database File: brinkmyer 2inj.db
Dataset Pathname: pass1
Presentation Format: gr-n-ccl
Dataset Creation: Tue Dec 08 10:05:26 2015 by Log SCH 111116
Charted by: Depth in Feet scaled 1:240



12-08-2015
Perforated Interval
840.0 - 850.0 21 Perfs
2" DML RTG