



MIDWEST SURVEYS
 LOGGING - PERFORATING - CONSULTING SERVICES
 P.O. Box 66, Osawatomie, KS 66064
 913 / 755 - 2128

GAMMA RAY / NEUTRON / CCL

File No.

Company **RJ Enterprises**
 Well **Ingwerson No. 5-A**
 Field **Neesho Falls / Leroy**
 County **Coffey** State **Kansas**

Location **3171' FSL & 899' FEL**
NE-SW-SE-NE

Sec. 19
 Permian Basin
 Log Measured From
 Drilling Measured From

Temp. 22s
 Rge. 16e
 Elevation 1008'
 K.B. NA
 D.F. NA
 G.L. 1008'

Date
 Run Number
 Depth Driller
 Bottom Logged Interval
 Top Log Interval
 Fluid Level

One
 1082.0
 1075.0
 1074.0
 20.0
 F-III

Type Fluid
 Density / Viscosity
 Salinity - PPM Cl
 Max Recorded Temp
 Estimated Cement Top
 Equipment No
 Recorded By
 Witnessed By

Water
 NA
 NA
 NA
 0.0
 Osawatomie
 Gary Wirsich
 Jason Kent

BOREHOLE RECORD
 RIN
 No.
 One
 Two

BIT
 FROM
 TO

SIZE
 WGT.
 FROM
 TO

170#
 0.0
 10922.0
 2875'
 6.5#
 0.0
 1077.0

CASING RECORD

TO
 40.0
 1077.0

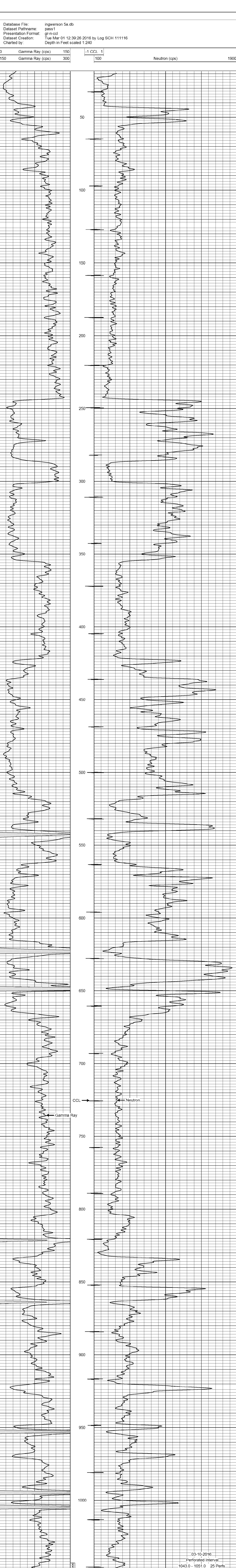
<<< Fold Here >>>

All interpretations are opinions based on inferences from electrical or other measurements and we cannot and do not guarantee the accuracy or correctness of any interpretation, and we shall not, except in the case of gross or willful negligence on our part, be liable or responsible for any loss, costs, damages, or expenses incurred or sustained by anyone resulting from any interpretation made by any of our officers, agents or employees. These interpretations are also subject to our general terms and conditions set out in our current Price Schedule.

Comments

Drilling Contractor :
RJ Enterprises

Database File: ingwerson 5a.db
 Dataset Pathname: pass1
 Presentation Format: gr-n-ccl
 Dataset Creation: Tue Mar 01 12:39:26 2016 by Log SCH 111116
 Charted by: Depth in Feet scaled 1:240



03-10-2016
 Perforated Interval
 1043.0 - 1051.0 25 Perfs.
 2" DML RTG.

