



WIRELINE SERVICES, INC.
CHANUTE, KANSAS

**GAMMA RAY
NEUTRON
COMPLETION LOG**

Company JOHN PITMAN REV. TRUST
Well A.D. BERRY #B-4
Field WAYSIDE-HAVANA
County MONTGOMERY
State KANSAS

Company JOHN PITMAN REV. TRUST
Well A.D. BERRY #B-4
Field WAYSIDE-HAVANA
County MONTGOMERY State KANSAS

Location: API # : 15-125-32445-00-00
3110' FSL & 2025' FEL
NE SW SW NE
SEC 33 TWP 33S RGE 14E
Permanent Datum GT Elevation 932' EST
Log Measured From GL
Drilling Measured From GL
Elevation K.B. D.F. G.L. 932' EST

Date	10-29-14
Run Number	1 NW
Depth Driller	
Depth Logger	841.6'
Top Log Interval	0
Bottom Logged Interval	841.6'
Fluid Level	FULL
Type Fluid	WATER
Production Casing	4.5" @ TD @
Max. Recorded Temp.	
Estimated Cement Top	
Calculated Cement Top	
Amount & Type Cement	
Amount & Type Admix	
Drilling Contractor	
Equipment Number	109
Location	
Recorded By	SANBORN, G.
Witnessed By	NUNNELEY, S.

<<< Fold Here >>>

All interpretations are opinions based on inferences from electrical or other measurements and we cannot and do not guarantee the accuracy or correctness of any interpretation, and we shall not, except in the case of gross or willful negligence on our part, be liable or responsible for any loss, costs, damages, or expenses incurred or sustained by anyone resulting from any interpretation made by any of our officers, agents or employees. These interpretations are also subject to our general terms and conditions set out in our current Price Schedule.

Comments

THANK YOU

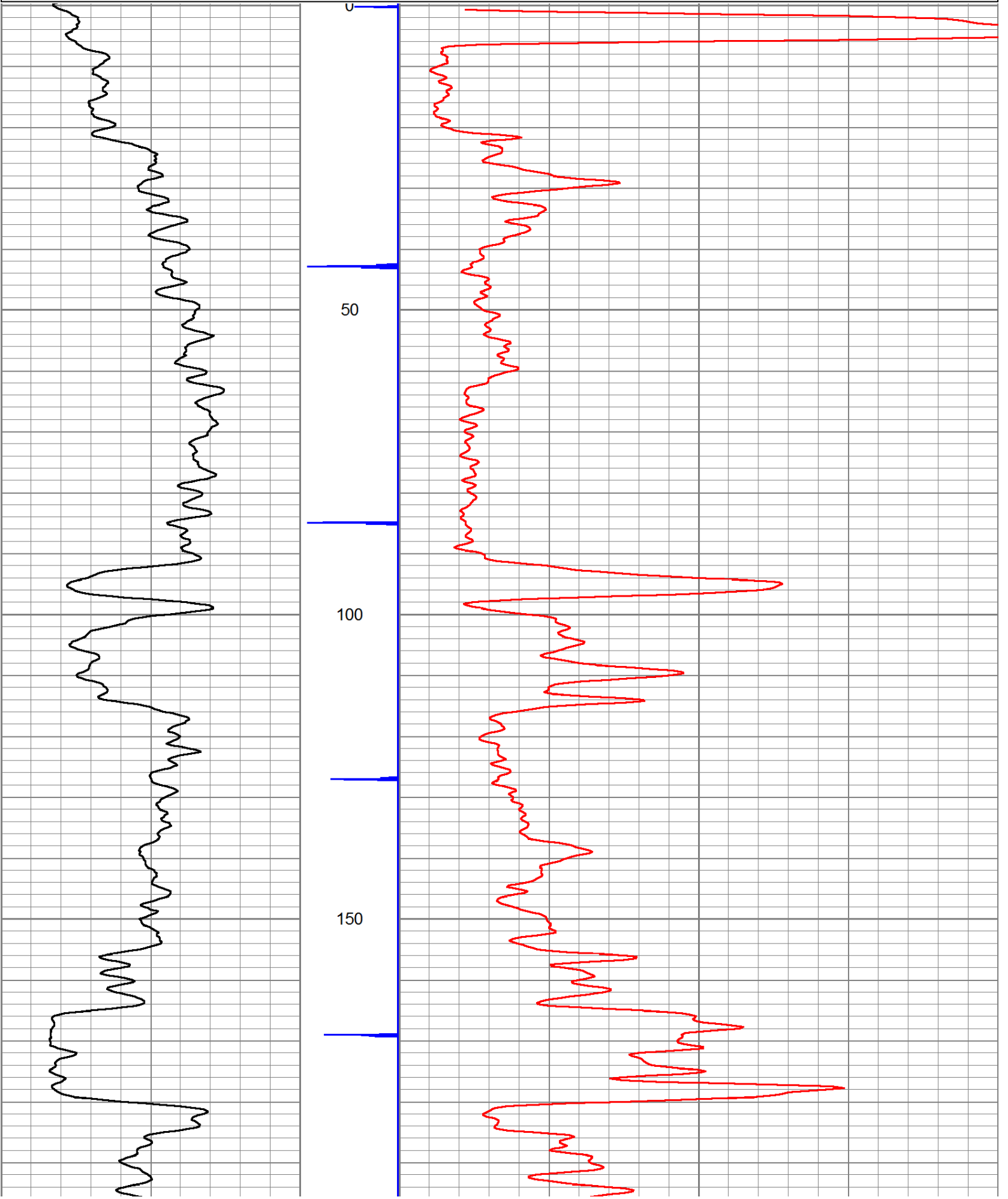
Sensor	Offset (ft)	Schematic	Description	Len (ft)	OD (in)	Wt (lb)

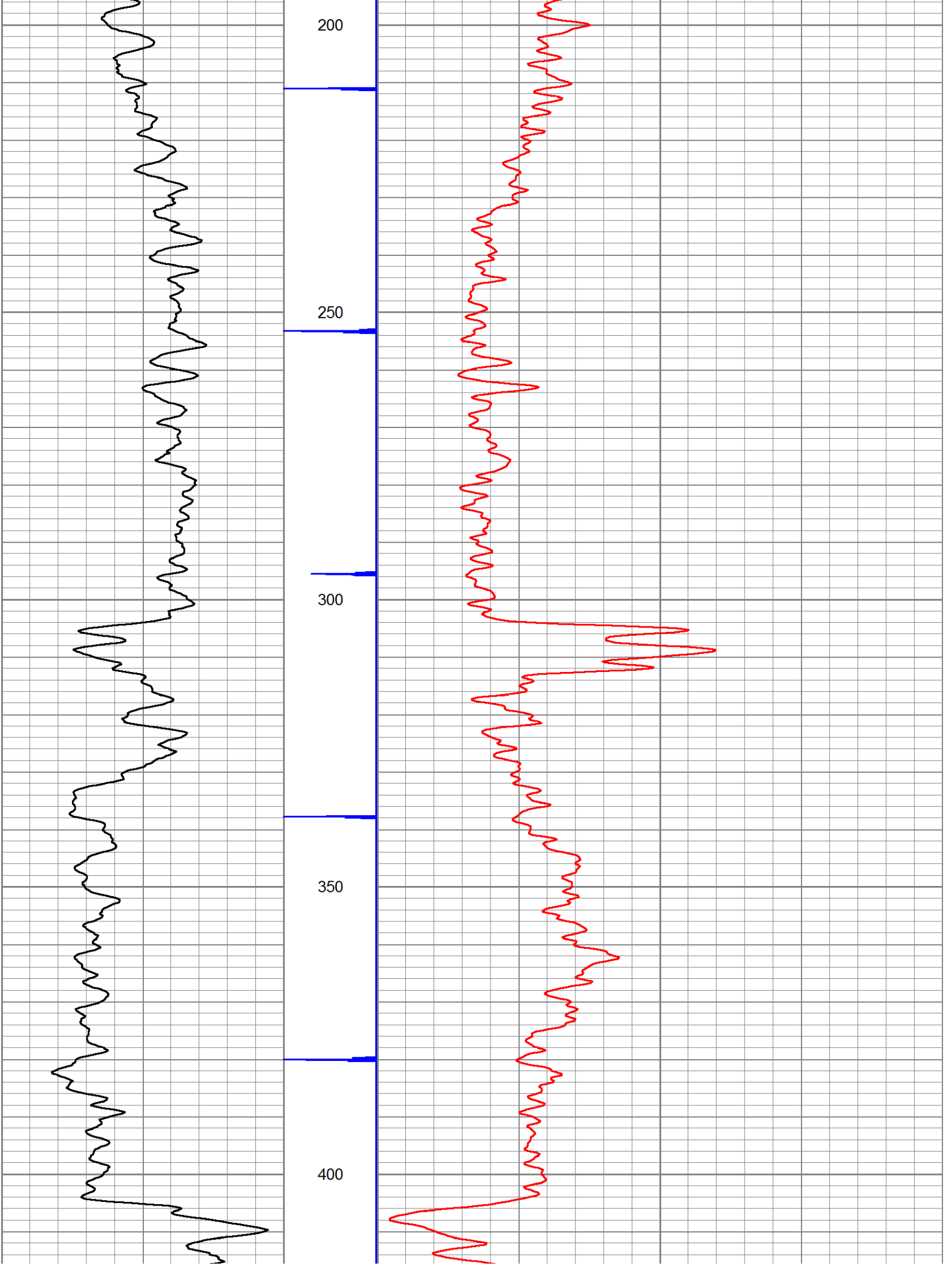
GR	7.59		GR-TITAN_169 (TIT169_001) Titan 1 11/16" Gamma Ray	4.75	1.69	20.00
CCL	5.05		CCL-TITAN_169 (TIT169) Titan 1 11/16" Logging CCL	1.83	1.69	7.50
NEU	0.63		NEU-TITAN (TIT801) TITAN 1 11/16" Neutron	4.33	1.69	25.00

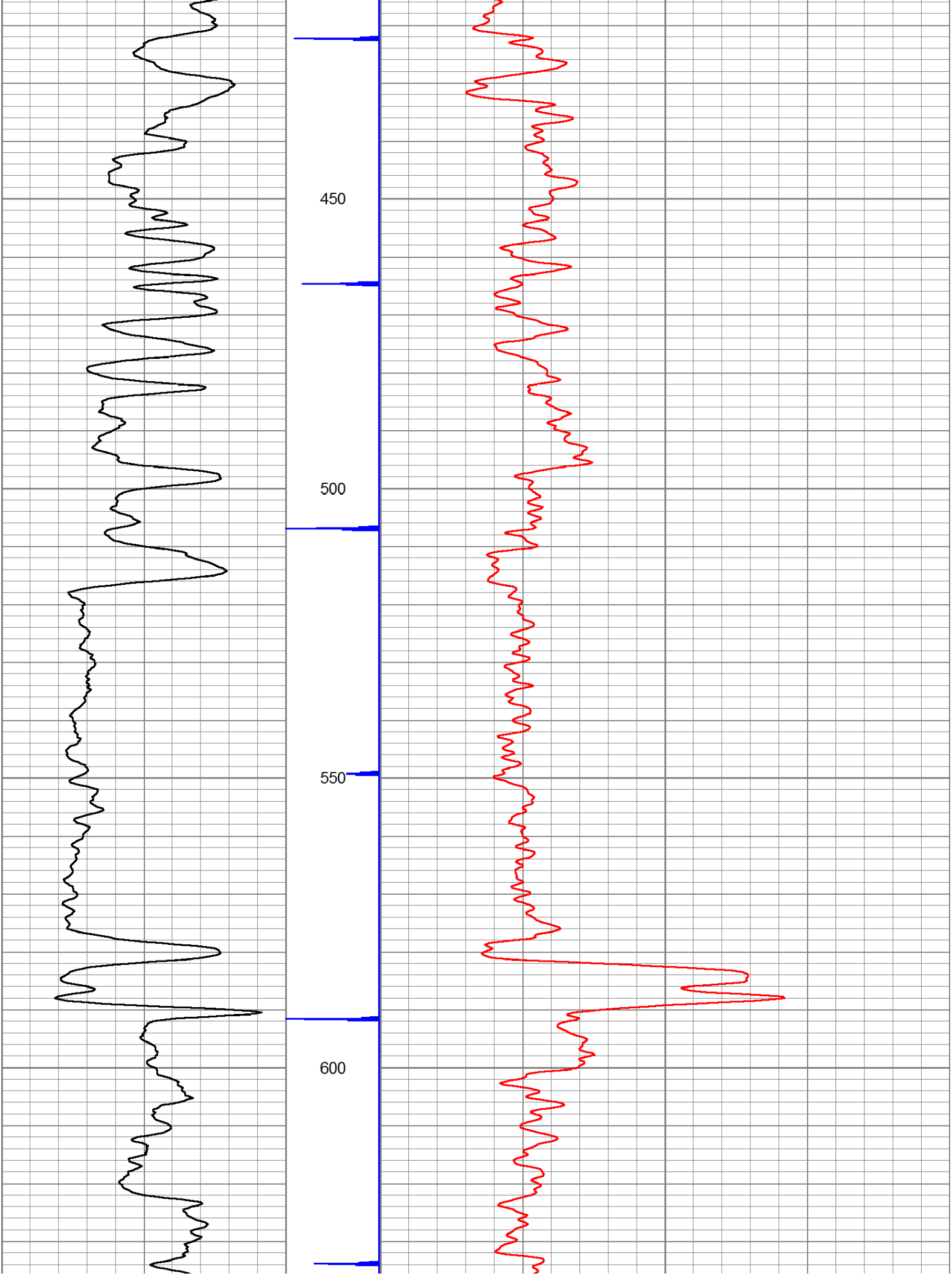
Dataset: a d berry #b-4.db: field/well/run1/pass1
 Total Length: 10.92 ft
 Total Weight: 52.50 lb
 O.D.: 1.69 in

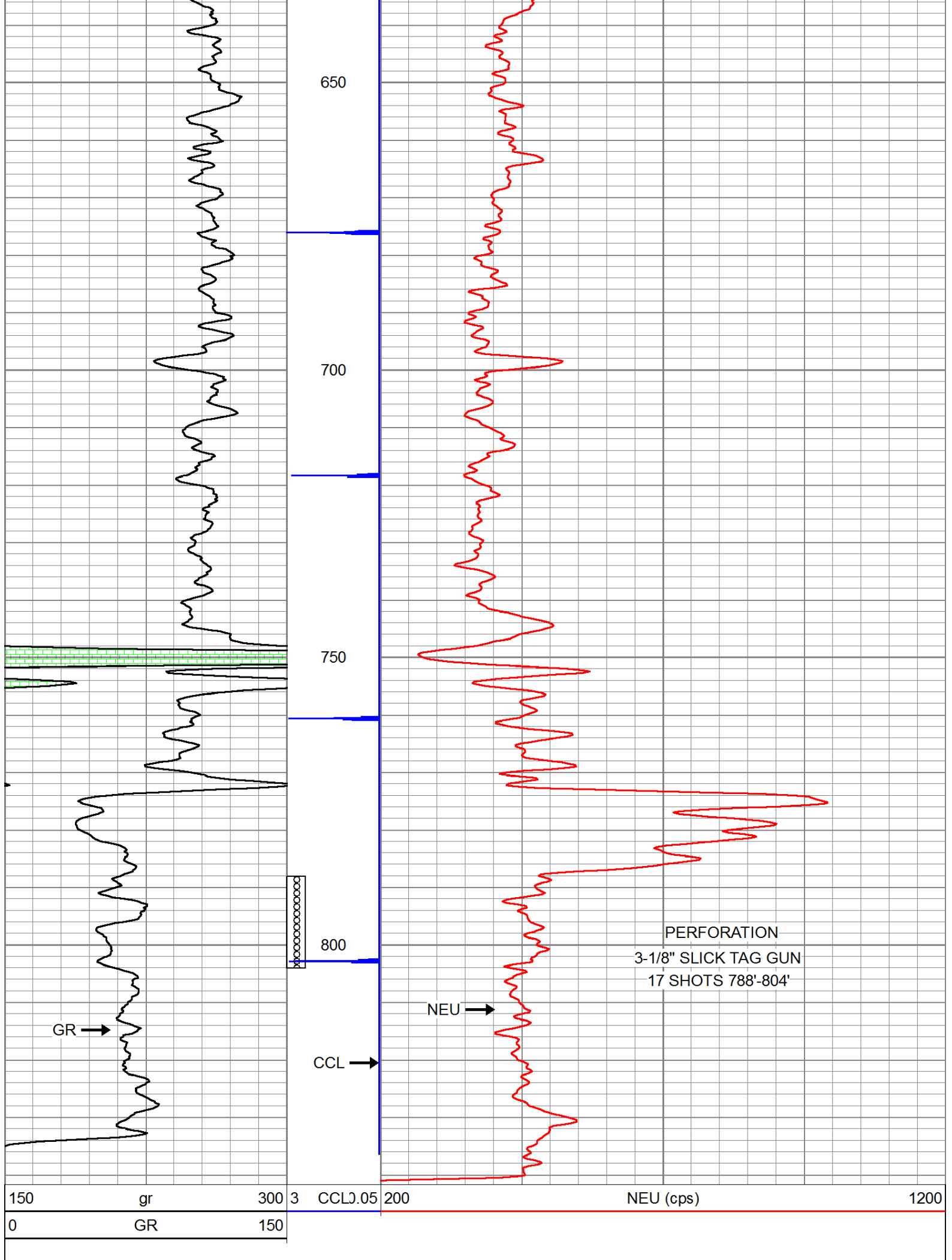
Database File: e:\a d berry #b-4.db
 Dataset Pathname: pass1
 Presentation Format: gr-n-ccl

150	gr	300	3	CCLJ.05	200	NEU (cps)	1200
0	GR	150					











Company	JOHN PITMAN REV. TRUST
Well	A.D. BERRY #B-4
Field	WAYSIDE-HAVANA
County	MONTGOMERY SEC. 33 TWP. 33S RGE. 14E
State	KANSAS
Date	10-29-14