



MIDWEST SURVEYS
 LOGGING - PERFORATING - CONSULTING SERVICES
 P.O. Box 68, Osawatomie, KS 66064
 913 / 755 - 2128

GAMMA RAY / NEUTRON / CCL

File No. _____
 Company Lakeshore Operating, LLC.
 Well Sturdivan "3" No. LO-40
 Field Vernon
 County Woodson State Kansas

Location 3493' FSL & 4595' FEL
 SW-NE-SW-NW

Sec. 34 Twp. 23S Rge. 16E
 Permanent Datum GL Elevation 1078'
 Log Measured From GL
 Drilling Measured From GL

Date 03-10-2016
 Run Number One
 Depth Driller 1092.0
 Depth Logger 1076.8
 Bottom Logged Interval 1075.8
 Top Log Interval 200.0
 Fluid Level Full

Type Fluid	Water
Density / Viscosity	NA
Salinity - PPM Cl	NA
Max Recorded Temp	NA
Estimated Cement Top	0.0
Equipment No.	102
Recorded By	Gary Windisch
Witnessed By	Mesley Kerdiam

BORE-HOLE RECORD		CASING RECORD	
NO.	BIT	TO	FROM
One	9.875"	40.0	7.00"
Two	5.875"	1092.0	2.875"
			17.0#
			17.0#
			0.0
			0.0
			1082.0

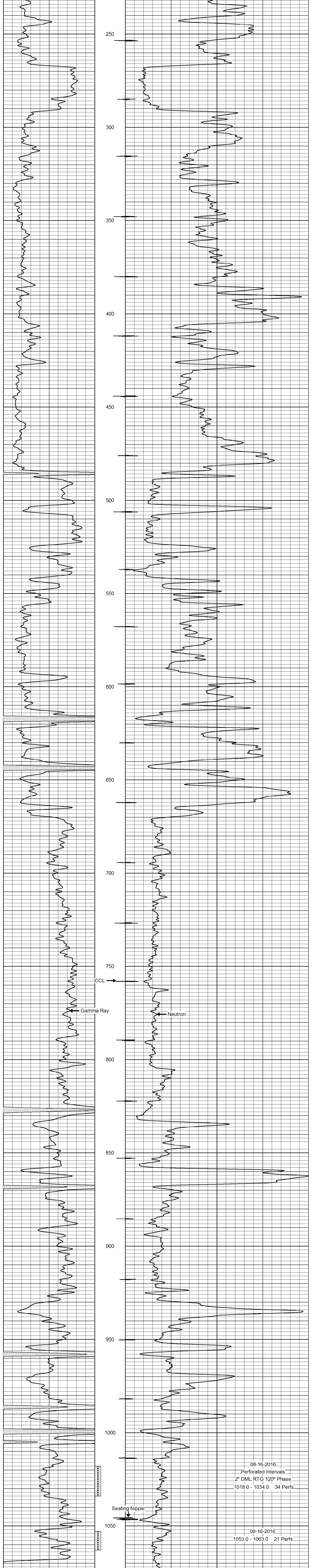
<<< Fold Here >>>

All interpretations are opinions based on inferences from electrical or other measurements and we cannot and do not guarantee the accuracy or correctness of any interpretation, and we shall not, except in the case of gross or willful negligence on our part, be liable or responsible for any loss, costs, damages, or expenses incurred or sustained by anyone resulting from any interpretation made by any of our officers, agents or employees. These interpretations are also subject to our general terms and conditions set out in our current Price Schedule.

Comments

Drilling Contractor :
 Jackman Oilfield Services

Database File: sturdivan3 40lo.db
 Dataset Pathname: pass1
 Presentation Format: gr-n-ccl
 Dataset Creation: Fri Jun 10 13:09:23 2016 by Log SCH 111116
 Charted by: Depth in Feet scaled 1:240



0 Gamma Ray (cps) 150
 150 Gamma Ray (cps) 300
 -1 CCL 1
 100 Neutron (cps) 1900