



MIDWEST SURVEYS
 LOGGING - PERFORATING - CONSULTING SERVICES
 P.O. Box 68, Osawatomie, KS 66064
 913 / 755 - 2128

GAMMA RAY / NEUTRON / CCL

File No. _____

Company **Haas Petroleum, LLC.**

Well **Trester No. 2-HP**

Field **Iola**

County **Allen** State **Kansas**

Location **165' FNL & 2850' FEL**

Perforate **NE-NE-NE-NW**

Other Services _____

Sec. 8 **Twp. 24S Rge. 19E**

Permitment Datum **GL** Elevation **1067'**

Log Measured From **GL** K 3 NA

Drilling Measured From **GL** D.F. NA

Date **07-28-2014** GL 1067'

Run Number **One**

Depth Logger **1040.0**

Bottom Logged Interval **1033.0**

Top Log Interval **20.0**

Fluid Level **Full**

Type Fluid **Water**

Density / Viscosity **NA**

Salinity - PPM Cl **NA**

Max Recorded Temp **NA**

Estimated Cement Top **NA**

Equipment No. **102** Location **Osawatimie**

Recorded By **Gary Windisch**

Witnessed By **John Haas**

BORE-HOLE RECORD

CASING RECORD

NO. BIT FROM TO SIZE WGT FROM TO

One 9.875" 20.0 7.00" 17.0# 0.0 20.0

Two 5.625" 20.0 1040.0 2.875" 6.5# 0.0 1033.0

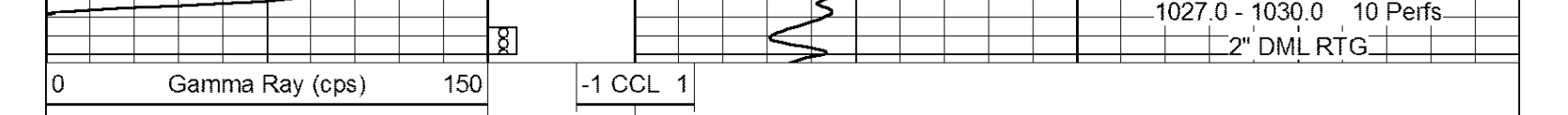
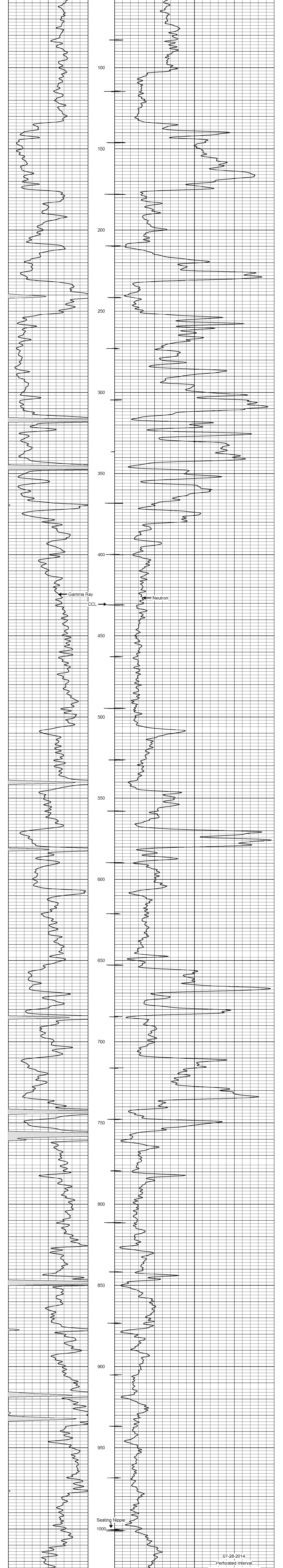
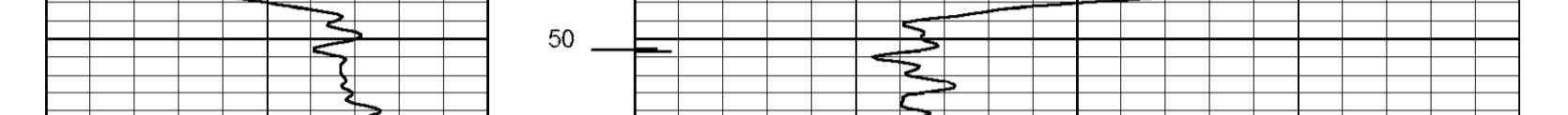
<<< Fold Here >>>

All interpretations are opinions based on inferences from electrical or other measurements and we cannot and do not guarantee the accuracy or correctness of any interpretation, and we shall not, except in the case of gross or willful negligence on our part, be liable or responsible for any loss, costs, damages, or expenses incurred or sustained by anyone resulting from any interpretation made by any of our officers, agents or employees. These interpretations are also subject to our general terms and conditions set out in our current Price Schedule.

Comments

Drilling Contractor :
Town Oilfield Services, Inc.

Database File: trester2hp.db
 Dataset Pathname: pass1
 Presentation Format: gr-n-ccl
 Dataset Creation: Mon Jul 28 09:25:49 2014 by Log SCH 111116
 Charted by: Depth in Feet scaled 1:240



07-28-2014
 Perforated Interval
 1027.0 - 1030.0 10 Perfs
 2" DML RTG