



MIDWEST SURVEYS
 LOGGING - PERFORATING - CONSULTING SERVICES
 P. O. Box 68, Osawatomie, KS 68064
 913 / 755 - 2128

GAMMA RAY / NEUTRON / CCL

File No. Company **Colt Energy, Inc.**

Well **Allen No-8**

County **Big Sandy**

Location **Woodson**

State **Kansas**

Location **540' FSL & 1637' FEL**

Location **NE-SE SW-SE**

Other Services **Perforate**

Sec. 14 Twp. 28S Rge. 14E Elevation
 Permanent Datum G.L. 907'
 Log Measured From G.L. NA
 Drilling Measured From G.L. 907'

Date 12-03-2014

Run Number 1384.0

Depth Logger 1389.0

Bottom Logged Interval 1359.0

Top Log Interval 20.0

Fluid Level Full

Type Fluid Water

Density / Viscosity NA

Salinity - PPM Cl NA

Max Recorded Temp NA

Estimated Cement Top 0.0

Equipment No. 102 Location Osawatomie

Recorded By Gary Wridgish

Witnessed By John Arntman

BOREHOLE RECORD
 RUN NO. BIT FROM TO SIZE WGT CASING RECORD TO
 One 12.25" 40.5 40.5 8.925" 24.0# 0.0 0.0
 Two 6.75" 40.5 1384.0 4.50" 10.5# 0.0 0.0

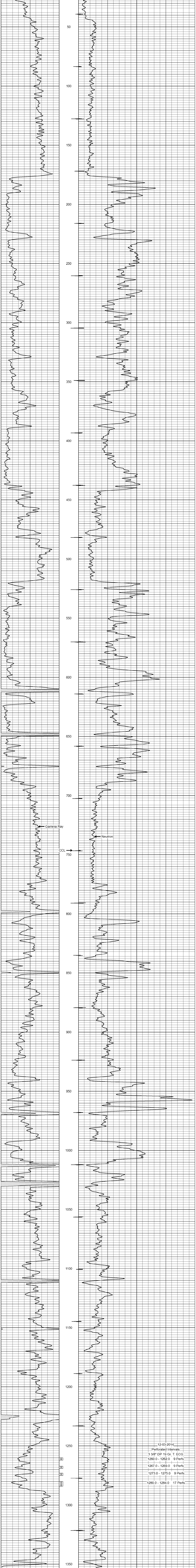
<<< Fold Here >>>

All interpretations are opinions based on inferences from electrical or other measurements and we cannot and do not guarantee the accuracy or correctness of any interpretation, and we shall not, except in the case of gross or willful negligence on our part, be liable or responsible for any loss, costs, damages, or expenses incurred or sustained by anyone resulting from any interpretation made by any of our officers, agents or employees. These interpretations are also subject to our general terms and conditions set out in our current Price Schedule.

Comments

Drilling Contractor :
 Bar Drilling, LLC.

Database File: allen8.db
 Dataset Pathname: pass1
 Presentation Format: gr-n-ccl
 Dataset Creator: Wed Dec 03 13:41:07 2014 by Log SCH 111116
 Charted by: Depth in Feet scaled 1.240



0 Gamma Ray (cps) 150
 150 Gamma Ray (cps) 300
 -1 CCL 1
 100 Neutron (cps) 1900