



DUALINDUCTION LL3/GR LOG

Company COLT ENERGY, INC.
Well CLINE # F3
Field IOLA
County ALLEN
State KANSAS

Company COLT ENERGY, INC.
Well CLINE # F3
Field IOLA
County ALLEN State KANSAS

Location: API #: 15-001-31330-0000
NE SW NE NE
810' FNL & 894' FEL
SEC 16 TWP 24S RGE 18E
Permanent Datum GL Elevation 953'
Log Measured From GL
Drilling Measured From GL
Other Services CDL/SWN
Elevation
K.B. ---
D.F. ---
G.L. 953'

Date	12-12-2014
Run Number	ONE
Depth Driller	1030'
Depth Logger	1033'
Bottom Logged Interval	1031'
Top Log Interval	SURFACE
Casing Driller	8 5/8" @ 42.5'
Casing Logger	8 5/8" @ 42.5'
Bit Size	6 3/4"
Type Fluid in Hole	WATER/MUD
Density / Viscosity	
pH / Fluid Loss	
Source of Sample	
Rm @ Meas. Temp	
Rmf @ Meas. Temp	
Rmc @ Meas. Temp	
Source of Rmf / Rmc	
Rm @ BHT	
Time Circulation Stopped	
Time Logger on Bottom	
Maximum Recorded Temperature	
Equipment Number	OW2
Location	HOMINY, OK
Recorded By	LOWERY
Witnessed By	MS. BALLARD

<<< Fold Here >>>

All interpretations are opinions based on inferences from electrical or other measurements and we cannot and do not guarantee the accuracy or correctness of any interpretation, and we shall not, except in the case of gross or willful negligence on our part, be liable or responsible for any loss, costs, damages, or expenses incurred or sustained by anyone resulting from any interpretation made by any of our officers, agents or employees. These interpretations are also subject to our general terms and conditions set out in our current Price Schedule.

Comments

OW2-8782
CREW : SHAMBLES



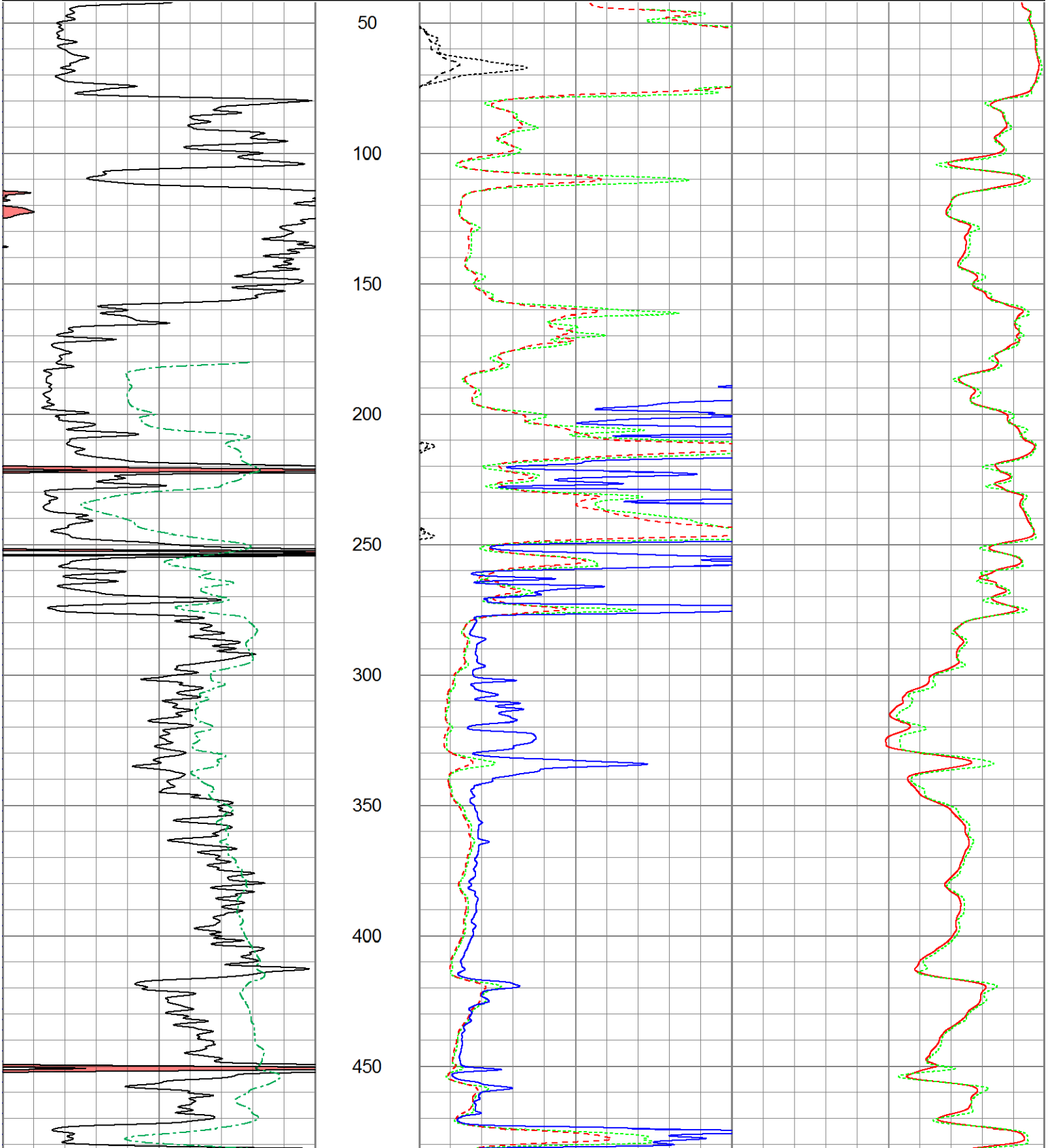
2" DIL SECTION

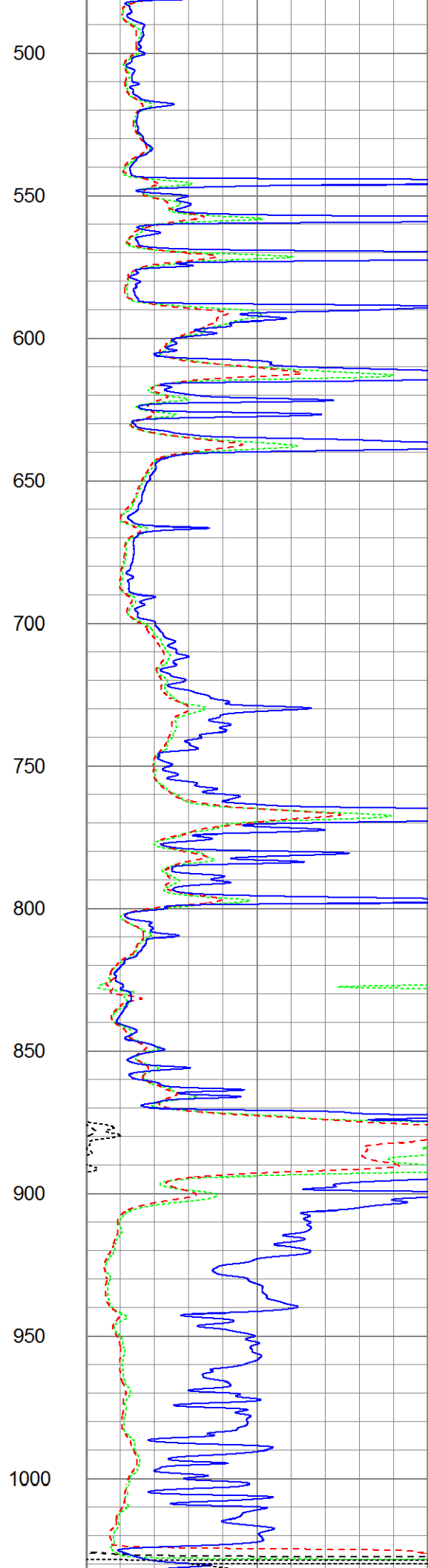
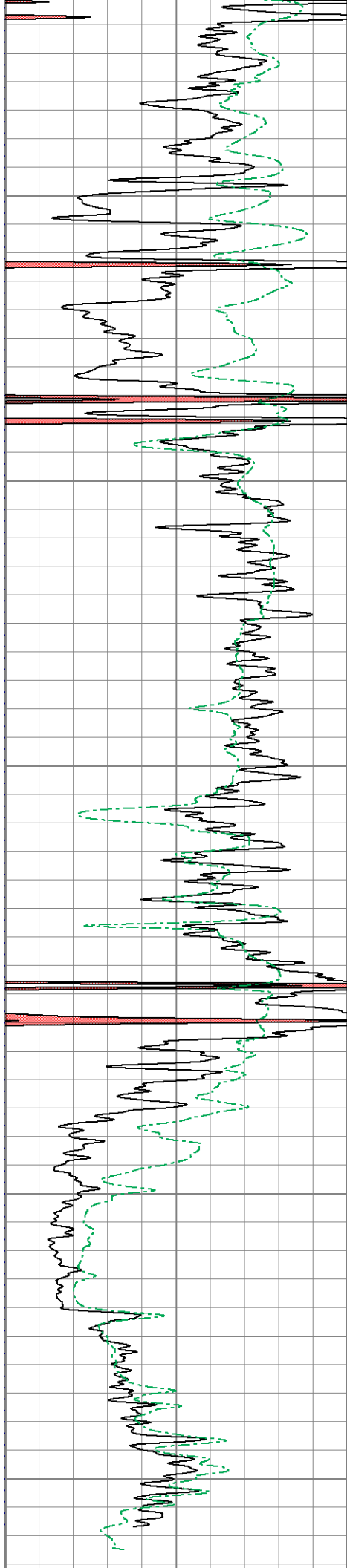
Database File ow2-8782 colt energy.db
 Dataset Pathname DIL/pass2.4
 Presentation Format dil2mdcol
 Dataset Creation Fri Dec 12 11:48:10 2014
 Charted by Depth in Feet scaled 1:600

0	GR (GAPI)	150
0	SP (mV)	200

1000	CILD (mmho/m)	0
1000	CILM (mmho/m)	0

0	RLL3 (Ohm-m)	50
0	RILM (Ohm-m)	50
0	RILD (Ohm-m)	50





0	GR (GAPI)	150
0	SP (mV)	200

1000	CILD (mmho/m)	0
1000	CILM (mmho/m)	0
0	RLL3 (Ohm-m)	50
0	RILM (Ohm-m)	50
0	RILD (Ohm-m)	50

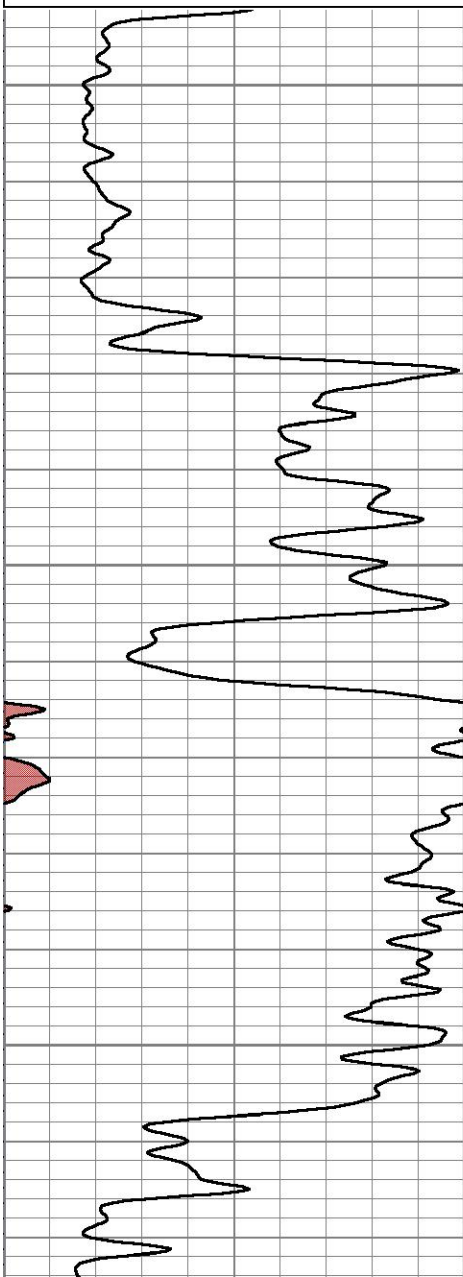


5" DIL SECTION

Database File ow2-8782 colt energy.db
 Dataset Pathname DIL/pass2.3
 Presentation Format dil5mdcol
 Dataset Creation Fri Dec 12 11:48:06 2014
 Charted by Depth in Feet scaled 1:240

0	Gamma Ray (GAPI)	150
0	SP (mV)	200

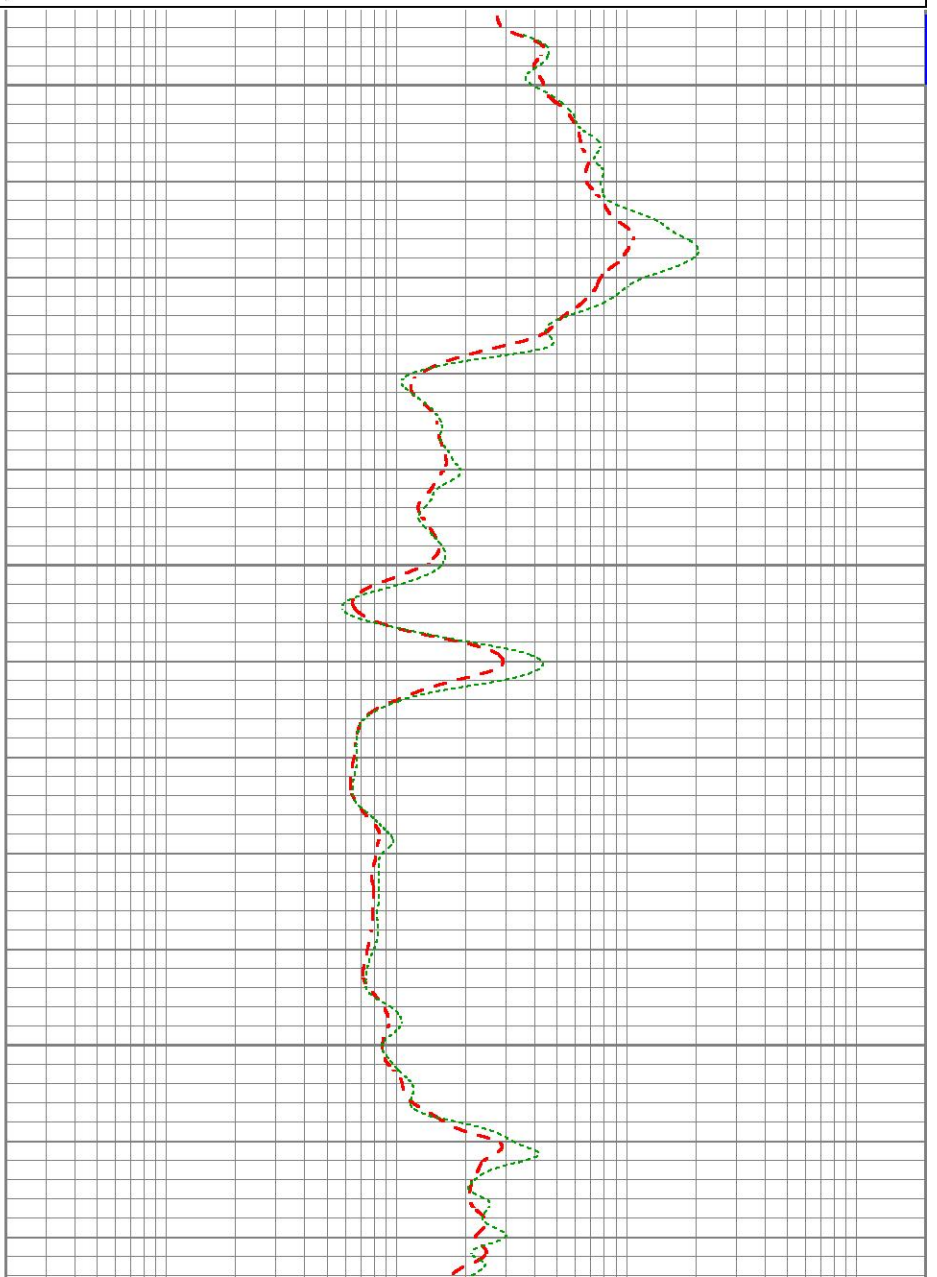
0.2	Deep Resistivity (Ohm-m)	2000
0.2	Medium Resistivity (Ohm-m)	2000
0.2	Shallow Resistivity (Ohm-m)	2000

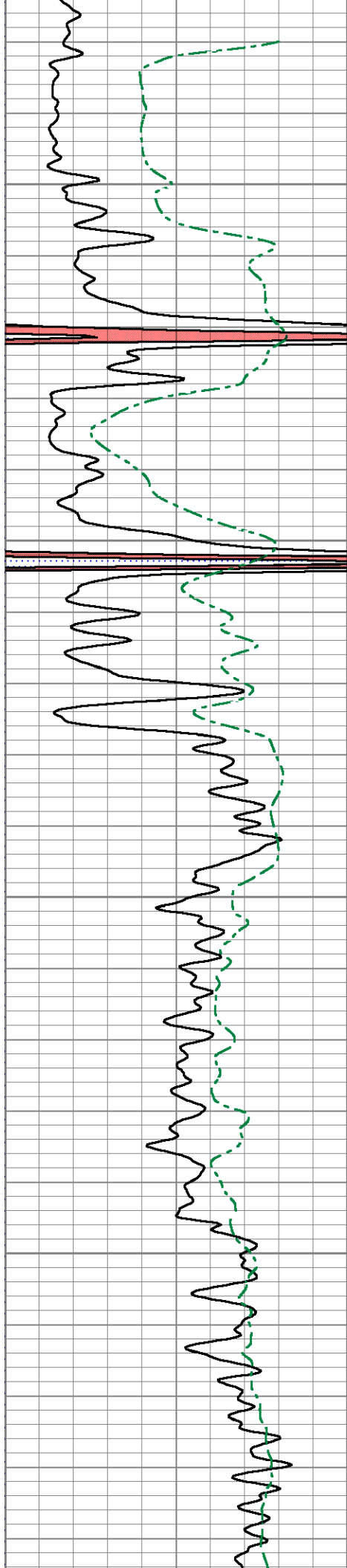


50

100

150



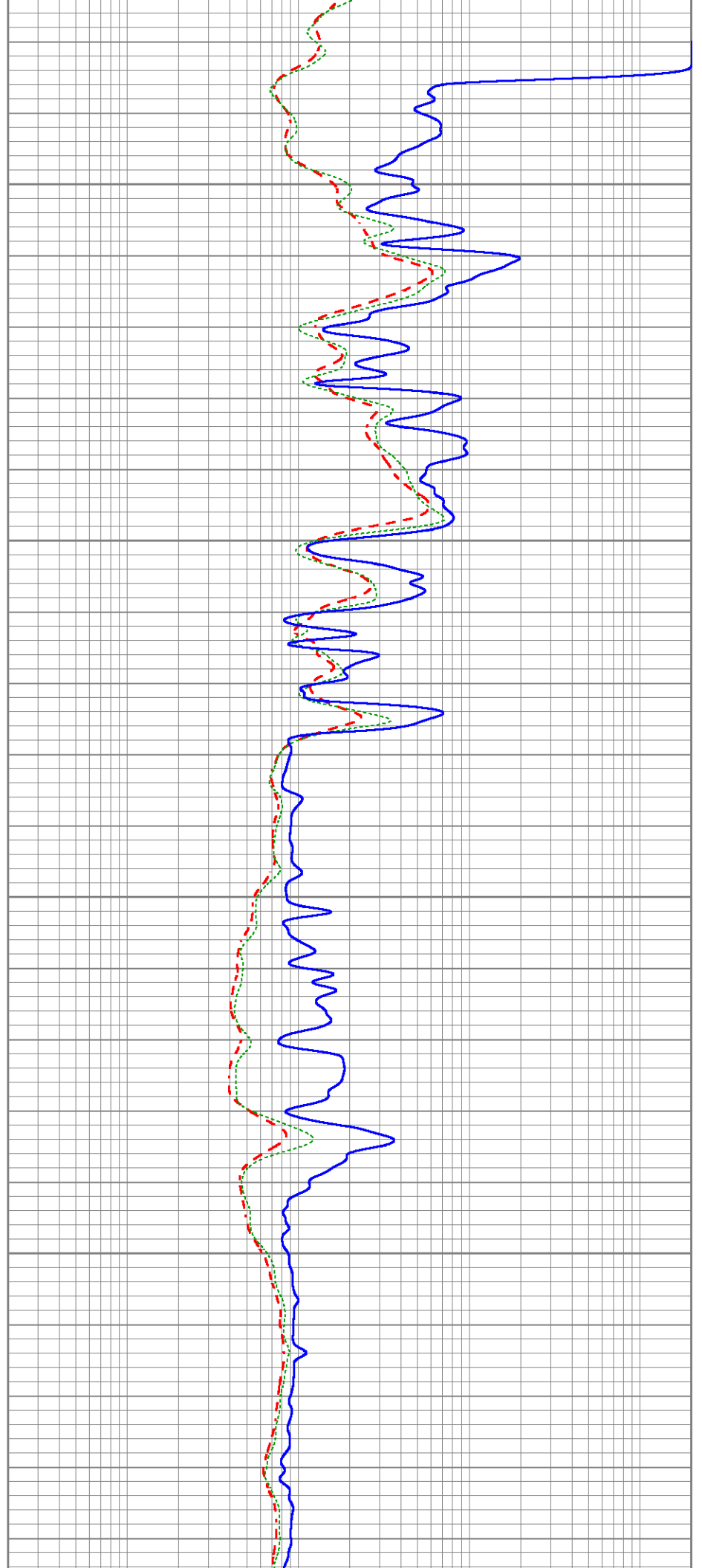


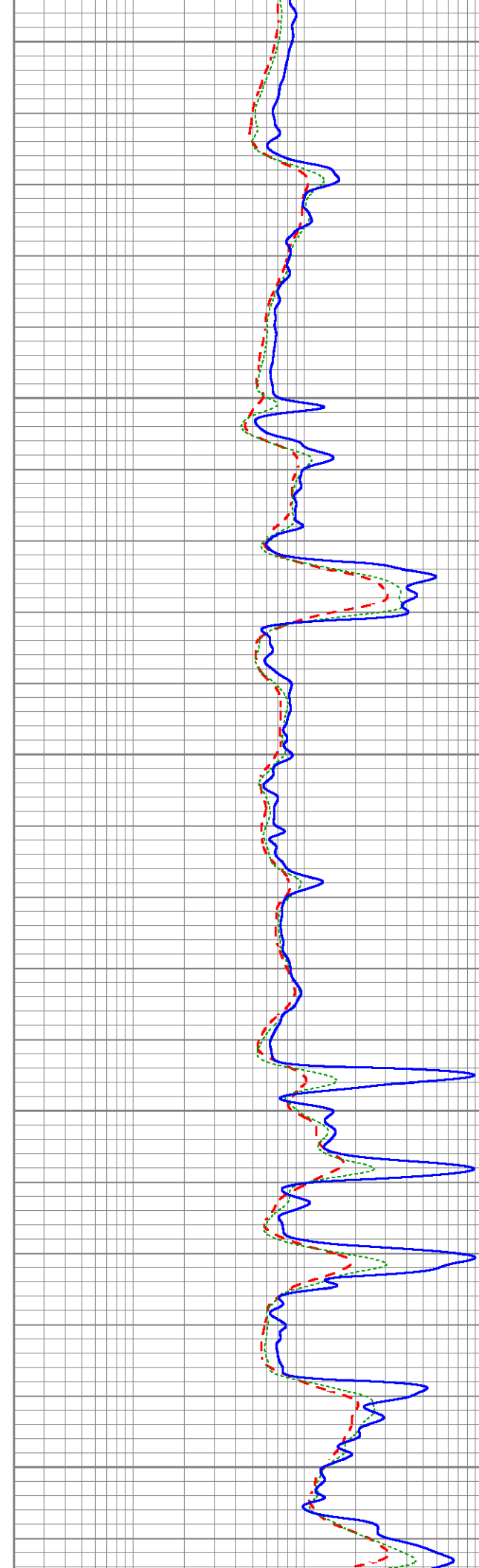
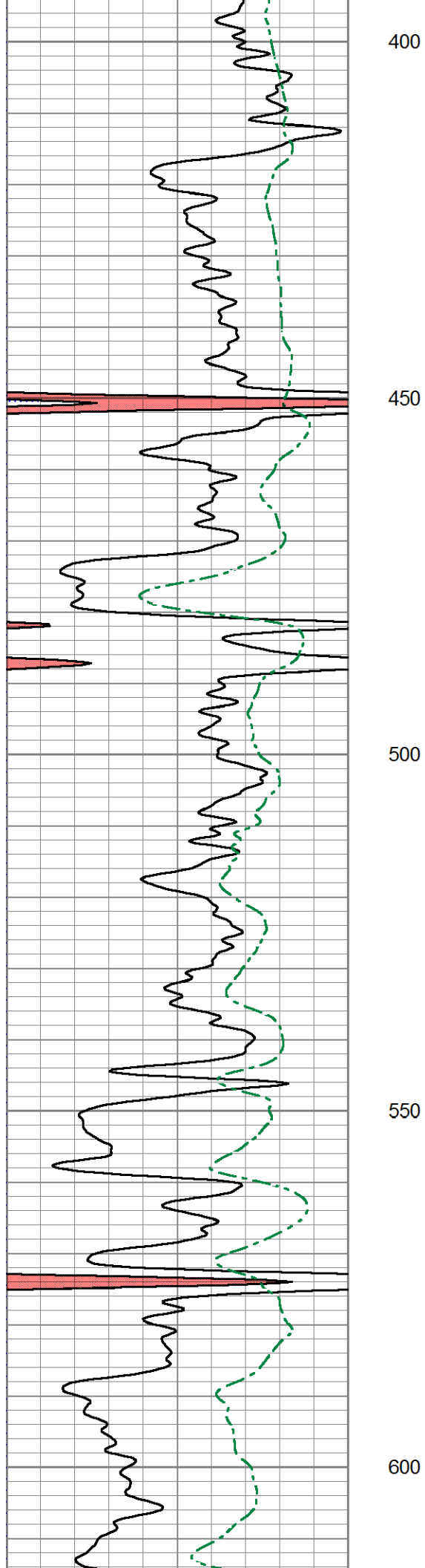
200

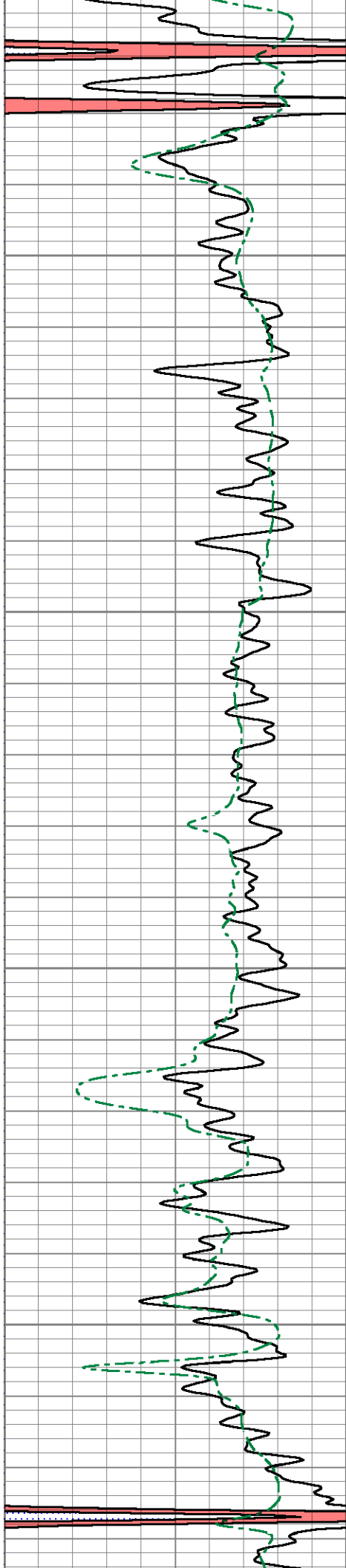
250

300

350





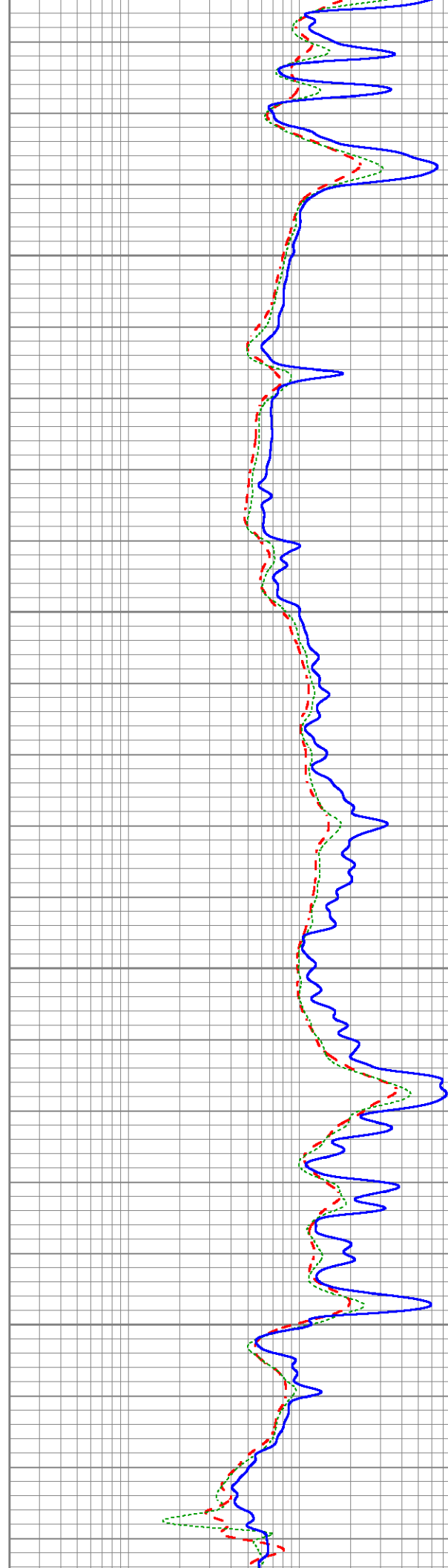


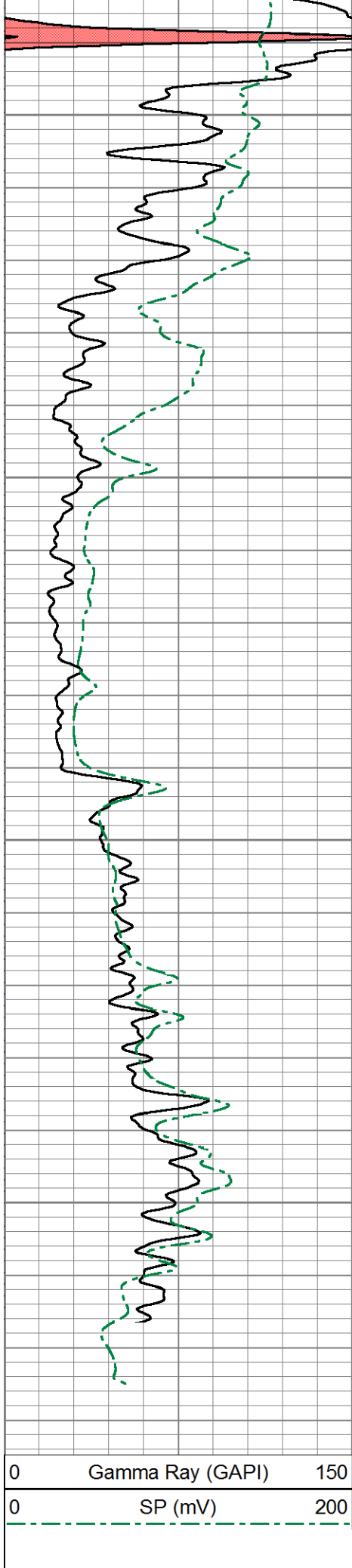
650

700

750

800



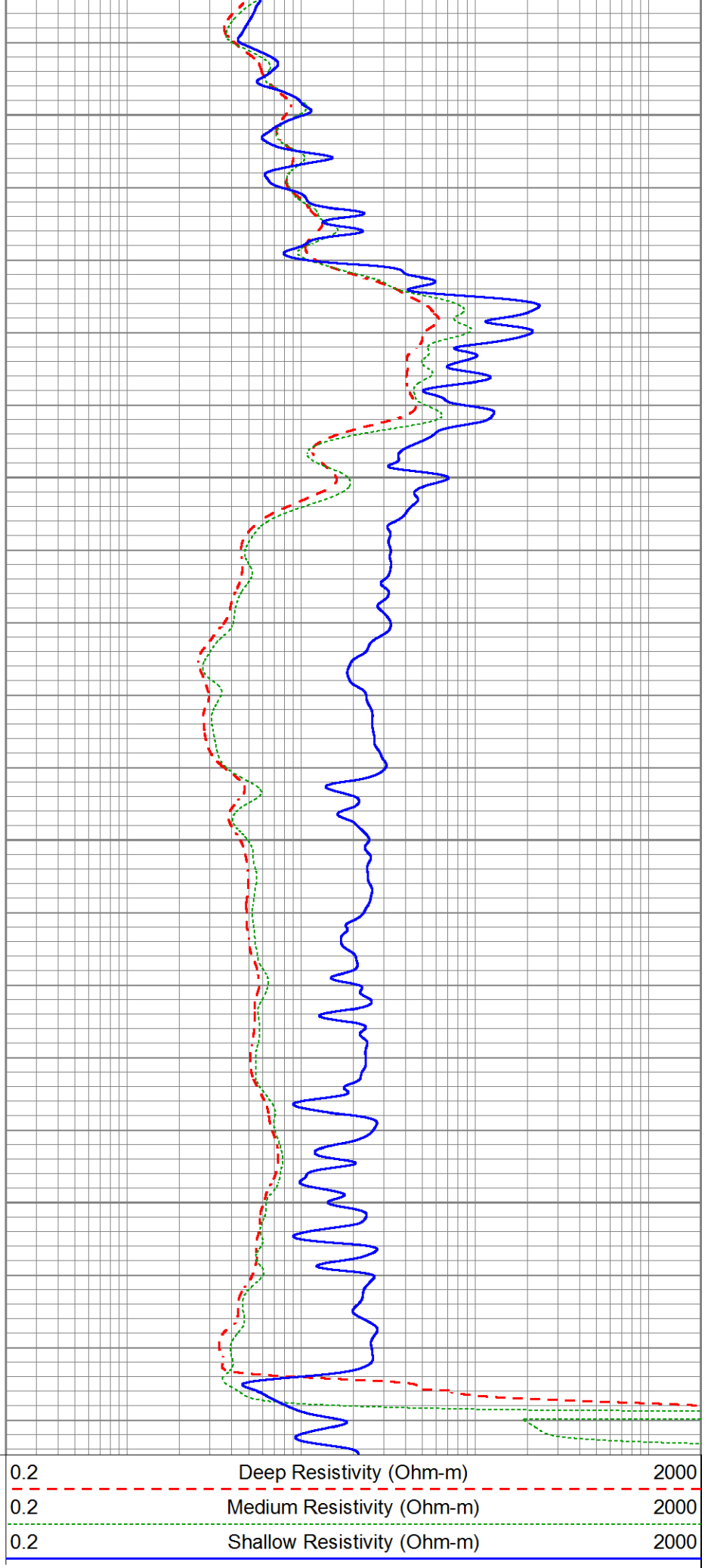


850

900

950

1000



Sensor	Offset (ft)	Schematic	Description	Length (ft)	O.D. (in)	Weight (lb)
			Cable-CableHead Isulation Sub	1.42	3.00	20.00
CILD SP	10.92 10.42		DIL-GEAR (159) Dual Induction Electrical Log	21.36	4.00	395.00
CILM	7.00					
RLL3	1.65					

Dataset: ow2-8782 colt energy.db: field/well/DIL/pass2
 Total length: 22.78 ft
 Total weight: 415.00 lb
 O.D.: 4.00 in