



DUAL INDUCTION
LL3/GR LOG

Company COLT ENERGY, INC.
Well CLINE # D2
Field IOLA
County ALLEN
State KANSAS

Company COLT ENERGY, INC.
Well CLINE # D2
Field IOLA
County ALLEN
State KANSAS

Location: API #: 15-001-31331-0000
NW NE NE NE
165' FNL & 41' FEL
SEC 16 TWP 24S RGE 18E
Permanent Datum GL Elevation 963'
Log Measured From GL
Drilling Measured From GL
Other Services
CDL/SWN
Elevation
K.B. ---
D.F. ---
G.L. 963'

Date	12-16-2014
Run Number	ONE
Depth Driller	1045'
Depth Logger	1050'
Bottom Logged Interval	1048'
Top Log Interval	SURFACE
Casing Driller	8 5/8" @ 42.5'
Casing Logger	8 5/8" @ 42.5'
Bit Size	6 3/4"
Type Fluid in Hole	WATER/MUD
Density / Viscosity	
pH / Fluid Loss	
Source of Sample	
Rm @ Meas. Temp	
Rmf @ Meas. Temp	
Rmc @ Meas. Temp	
Source of Rmf / Rmc	
Rm @ BHT	
Time Circulation Stopped	
Time Logger on Bottom	
Maximum Recorded Temperature	
Equipment Number	OW2
Location	HOMINY, OK
Recorded By	LOWERY
Witnessed By	MS. BALLARD

<<< Fold Here >>>

All interpretations are opinions based on inferences from electrical or other measurements and we cannot and do not guarantee the accuracy or correctness of any interpretation, and we shall not, except in the case of gross or willful negligence on our part, be liable or responsible for any loss, costs, damages, or expenses incurred or sustained by anyone resulting from any interpretation made by any of our officers, agents or employees. These interpretations are also subject to our general terms and conditions set out in our current Price Schedule.

Comments

OW2-8784
CREW : SHAMBLES



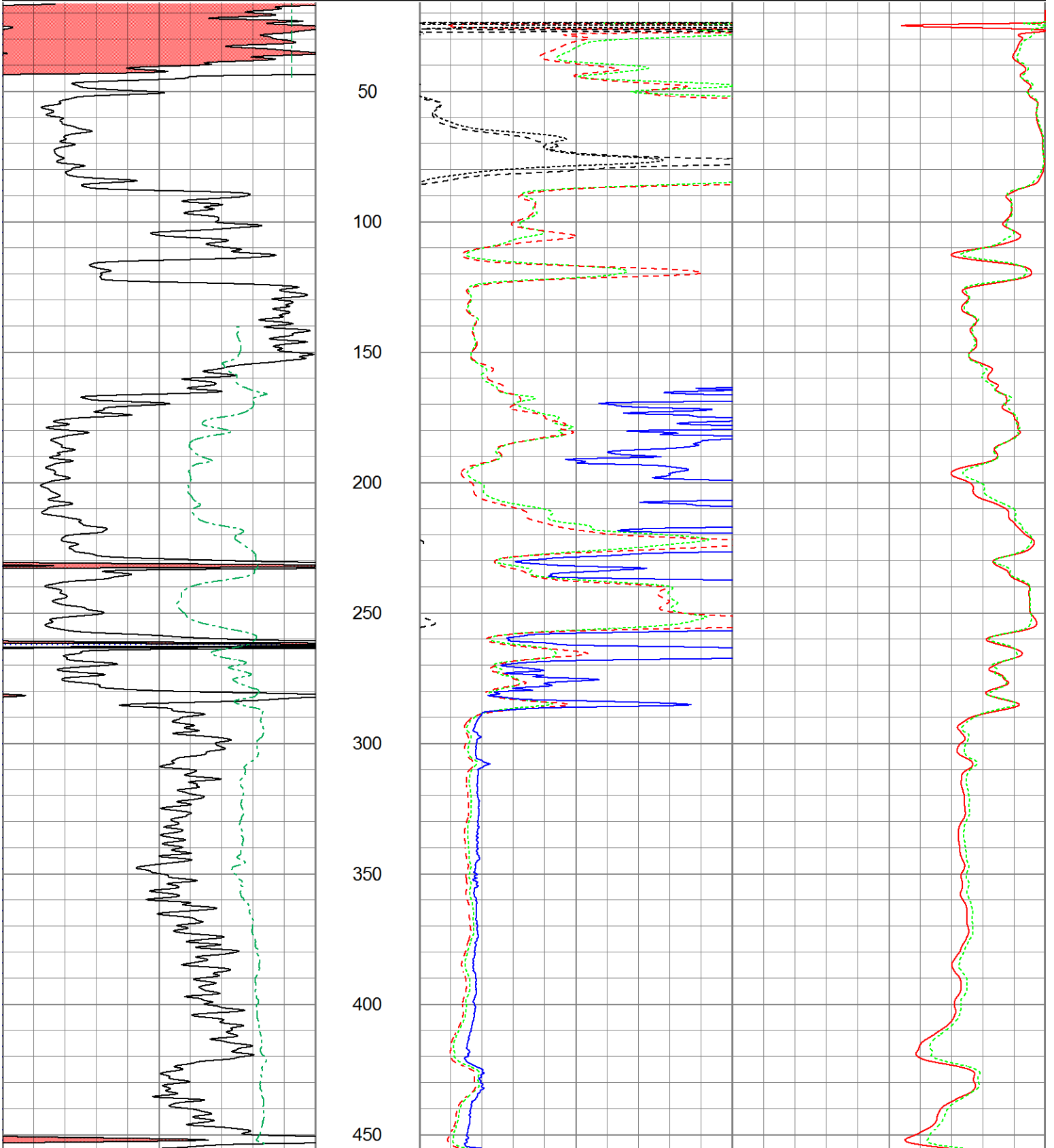
2" DIL SECTION

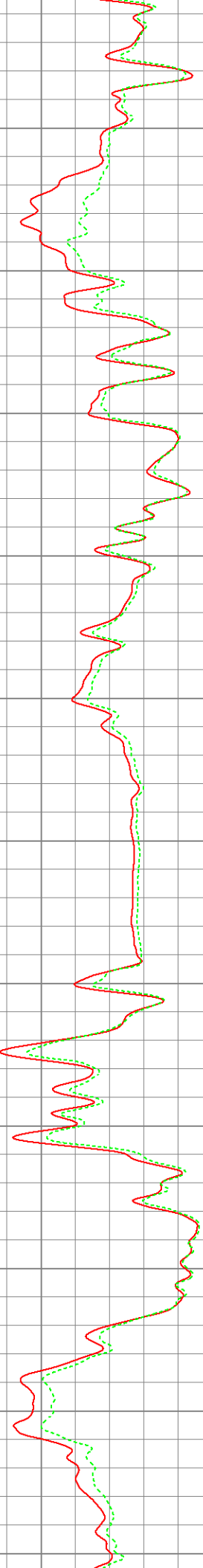
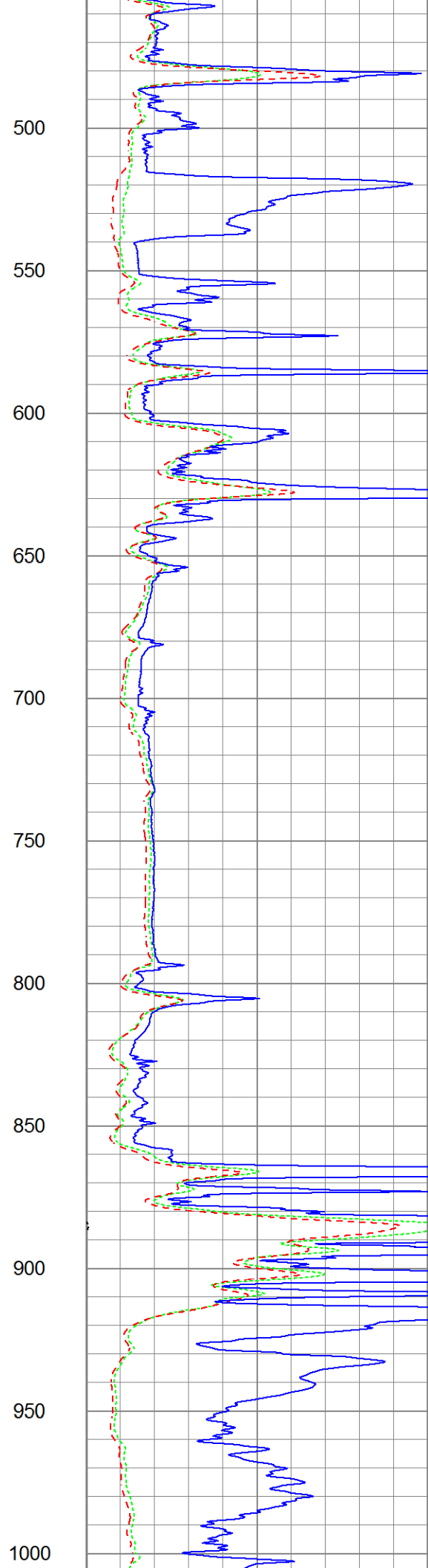
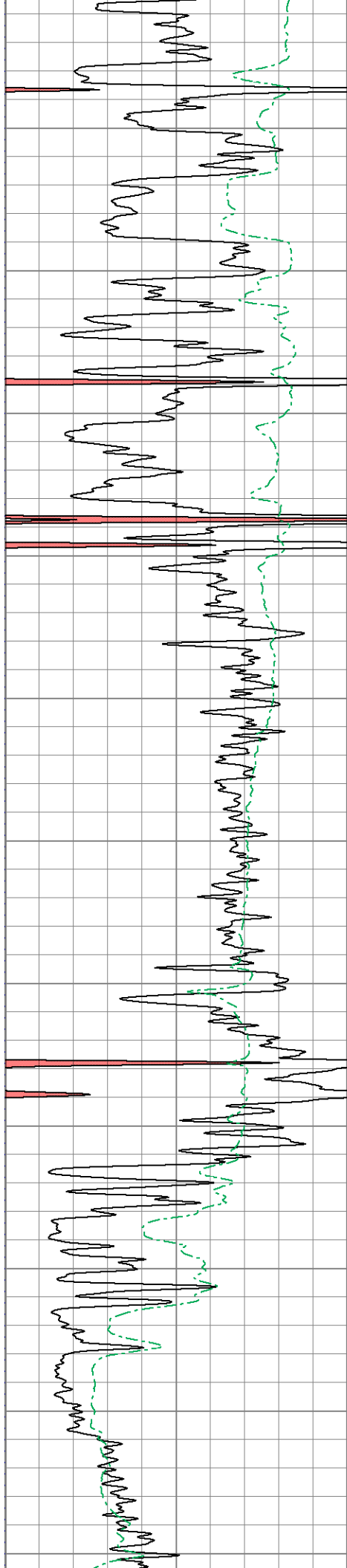
Database File ow2-8784 colt energy.db
 Dataset Pathname DIL/pass1.8
 Presentation Format dil2mdcol
 Dataset Creation Tue Dec 16 18:00:25 2014
 Charted by Depth in Feet scaled 1:600

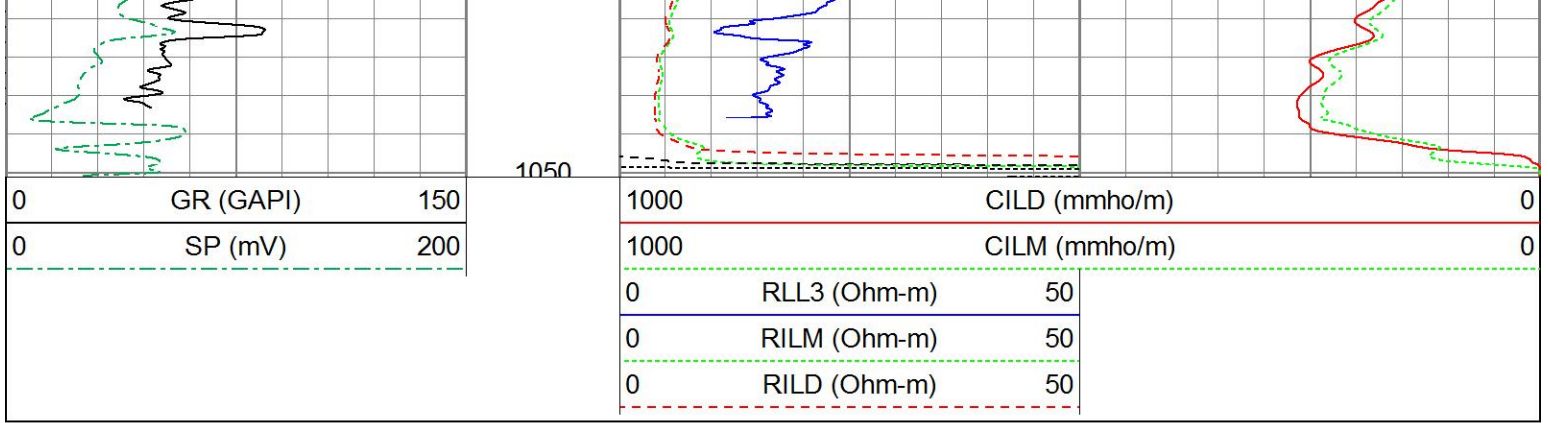
0	GR (GAPI)	150
0	SP (mV)	200

1000	CILD (mmho/m)	0
1000	CILM (mmho/m)	0

0	RLL3 (Ohm-m)	50
0	RILM (Ohm-m)	50
0	RILD (Ohm-m)	50



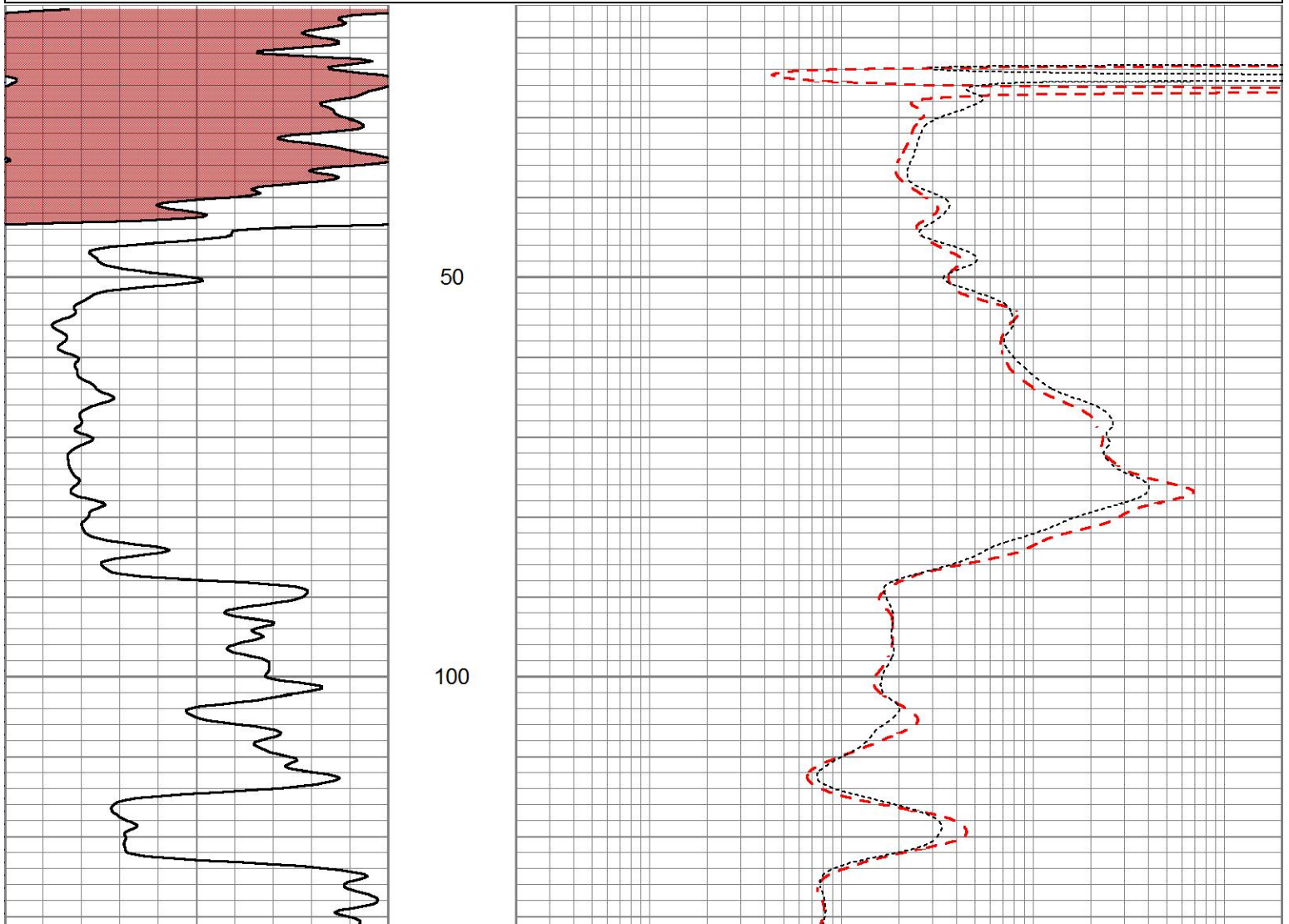


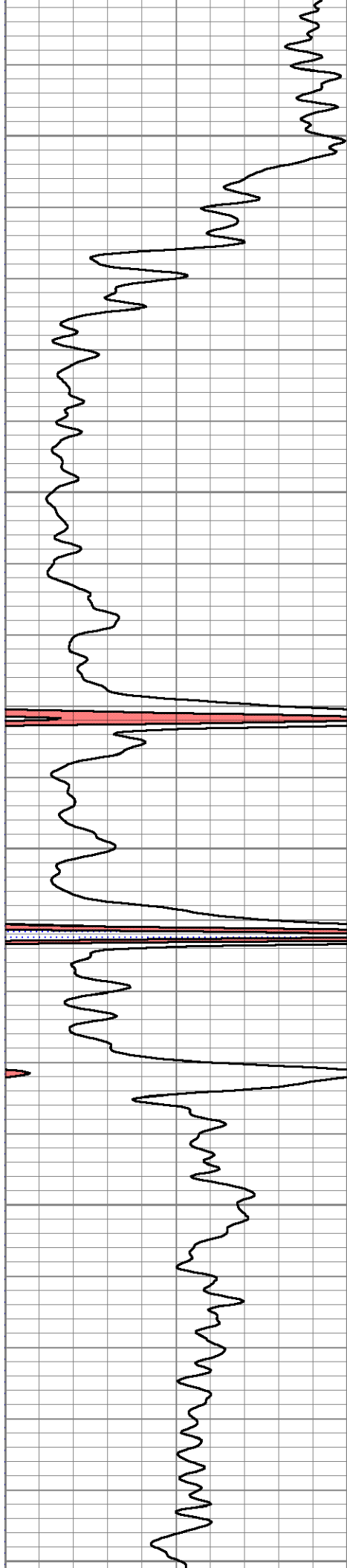


5" DIL SECTION

Database File ow2-8784 colt energy.db
 Dataset Pathname DIL/pass1.7
 Presentation Format dil5air
 Dataset Creation Tue Dec 16 18:00:11 2014
 Charted by Depth in Feet scaled 1:240

0	GR (GAPI)	150	0.2	RILD (Ohm-m)	2000
			0.2	RLL3 (Ohm-m)	2000
			0.2	RILM (Ohm-m)	2000





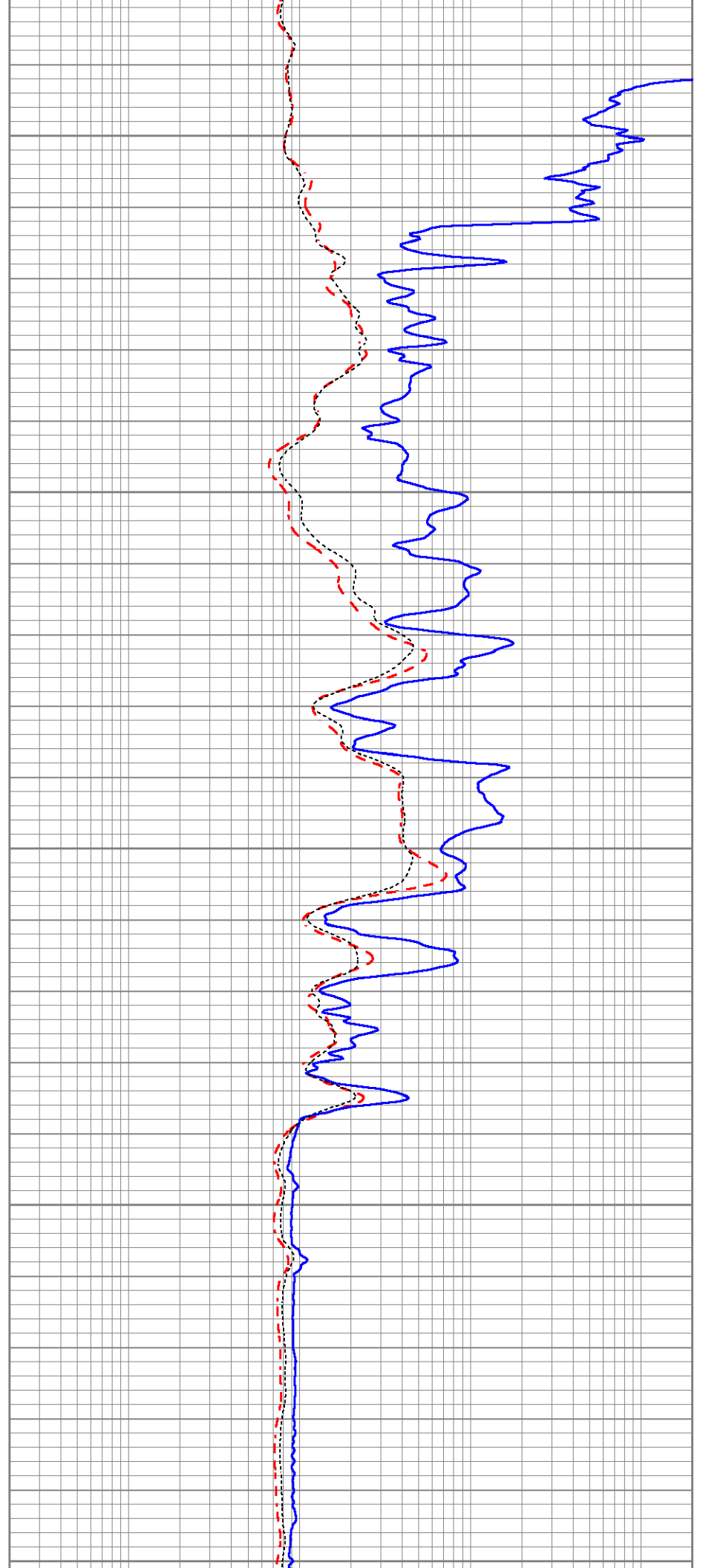
150

200

250

300

350



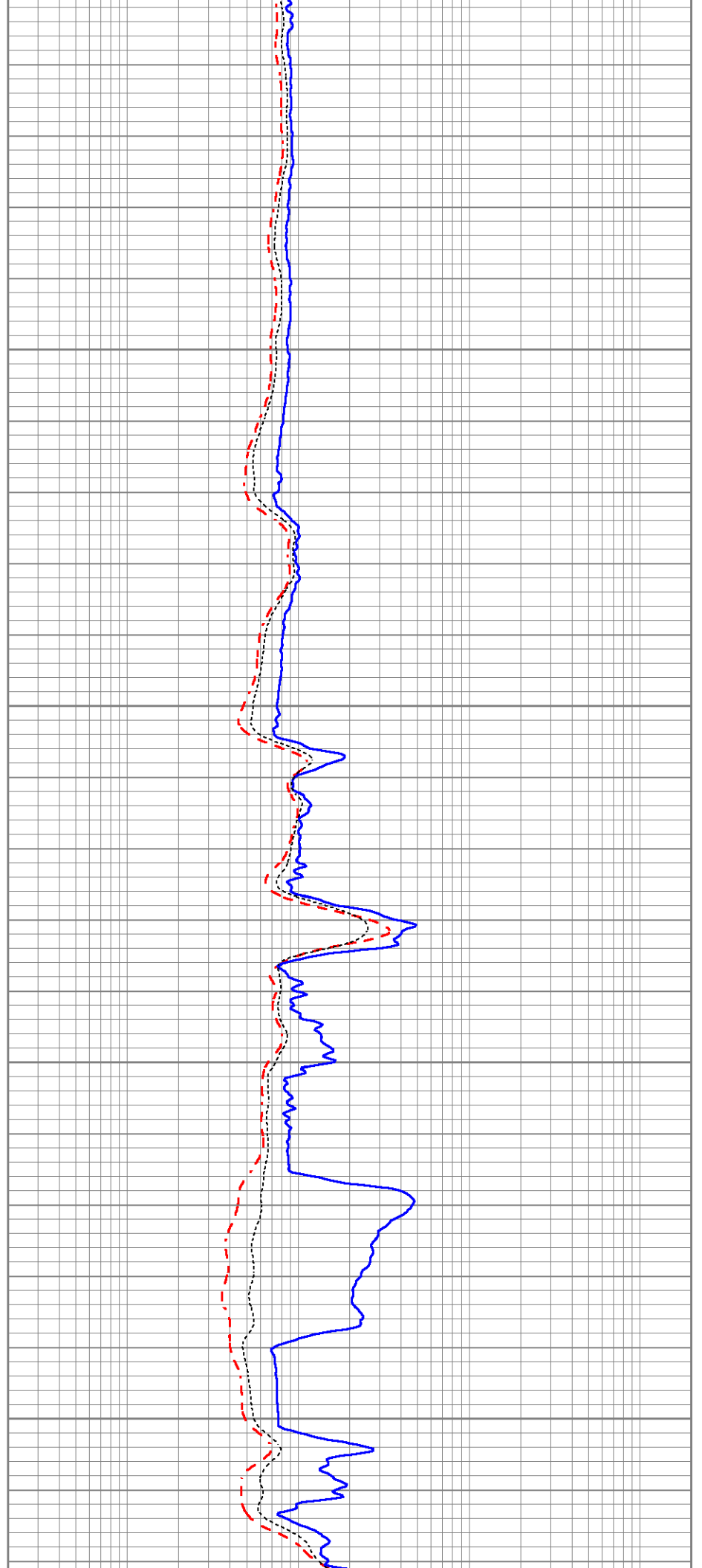


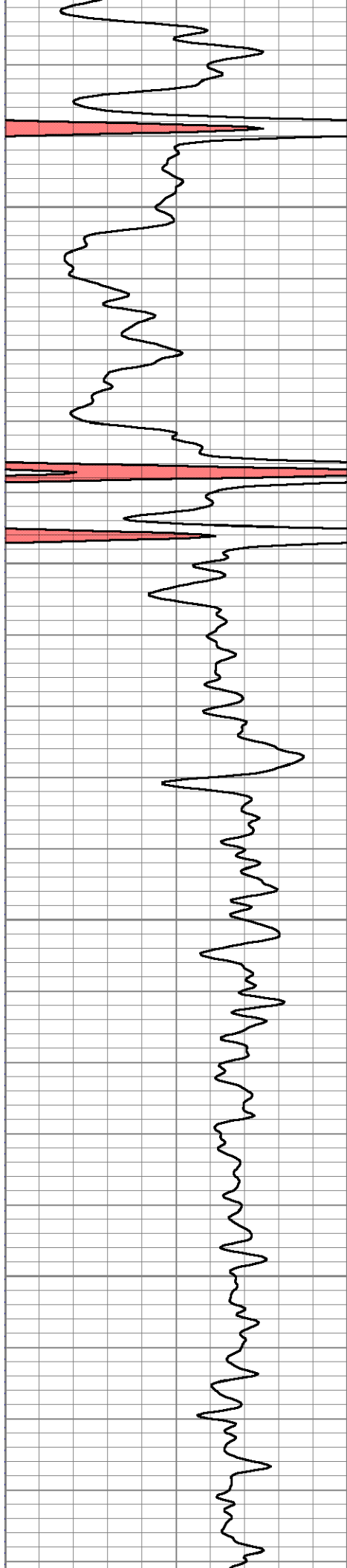
400

450

500

550



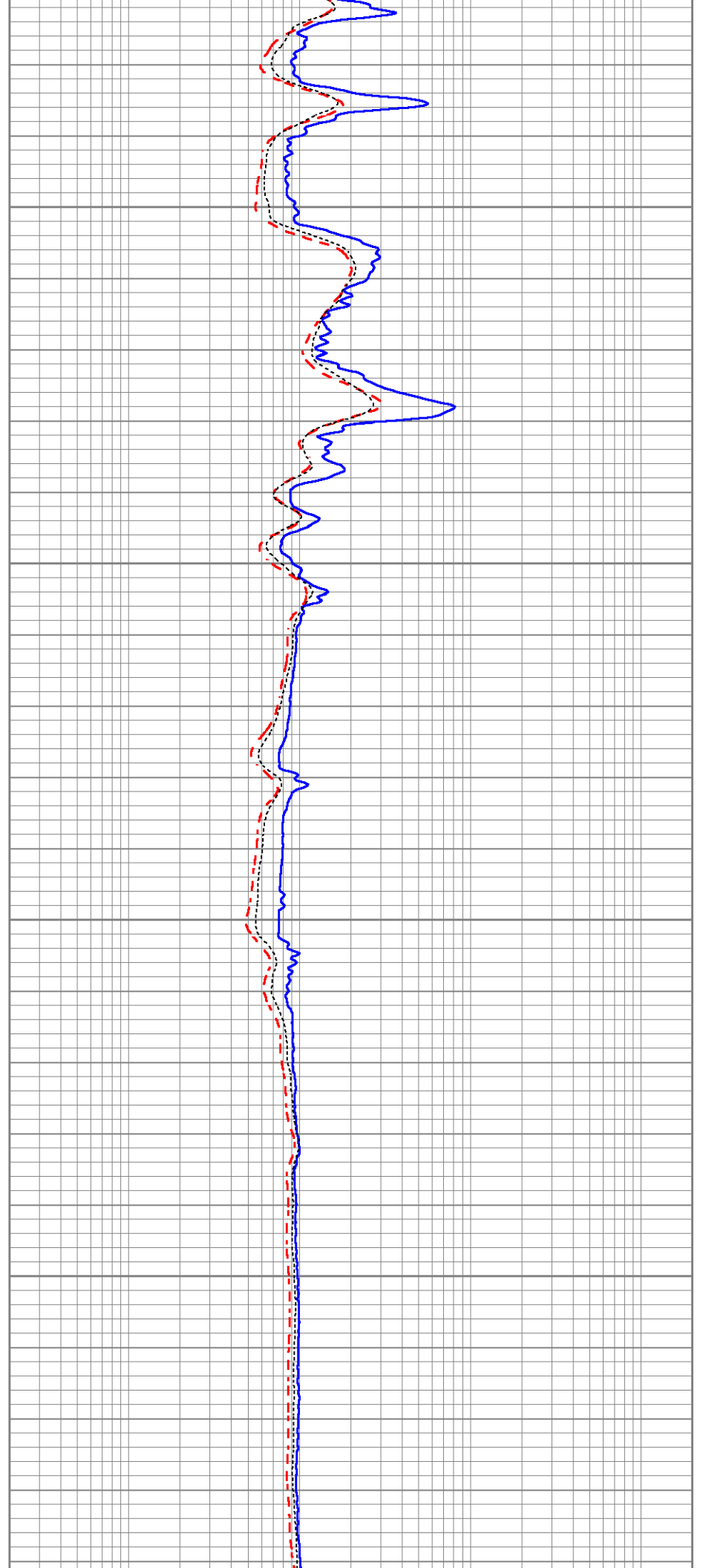


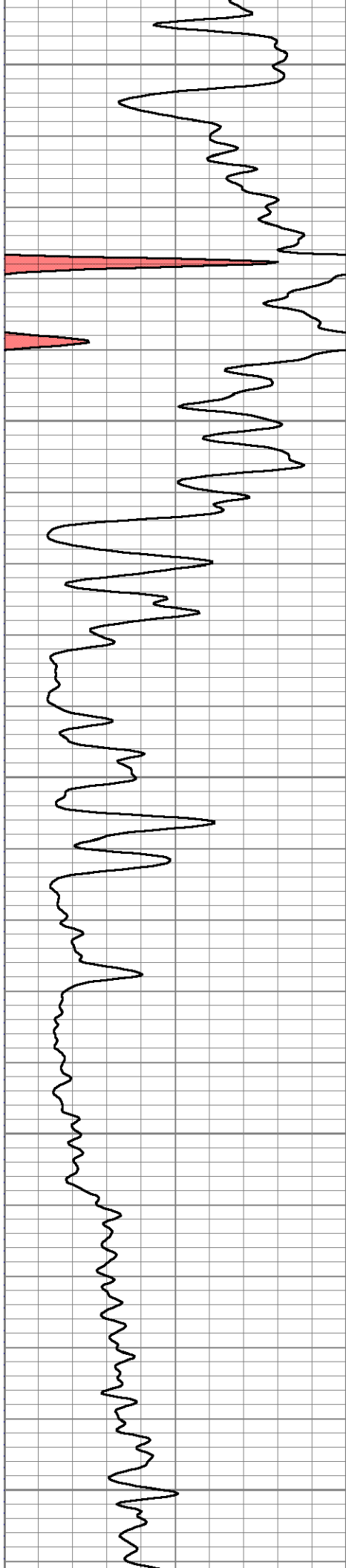
600

650

700

750





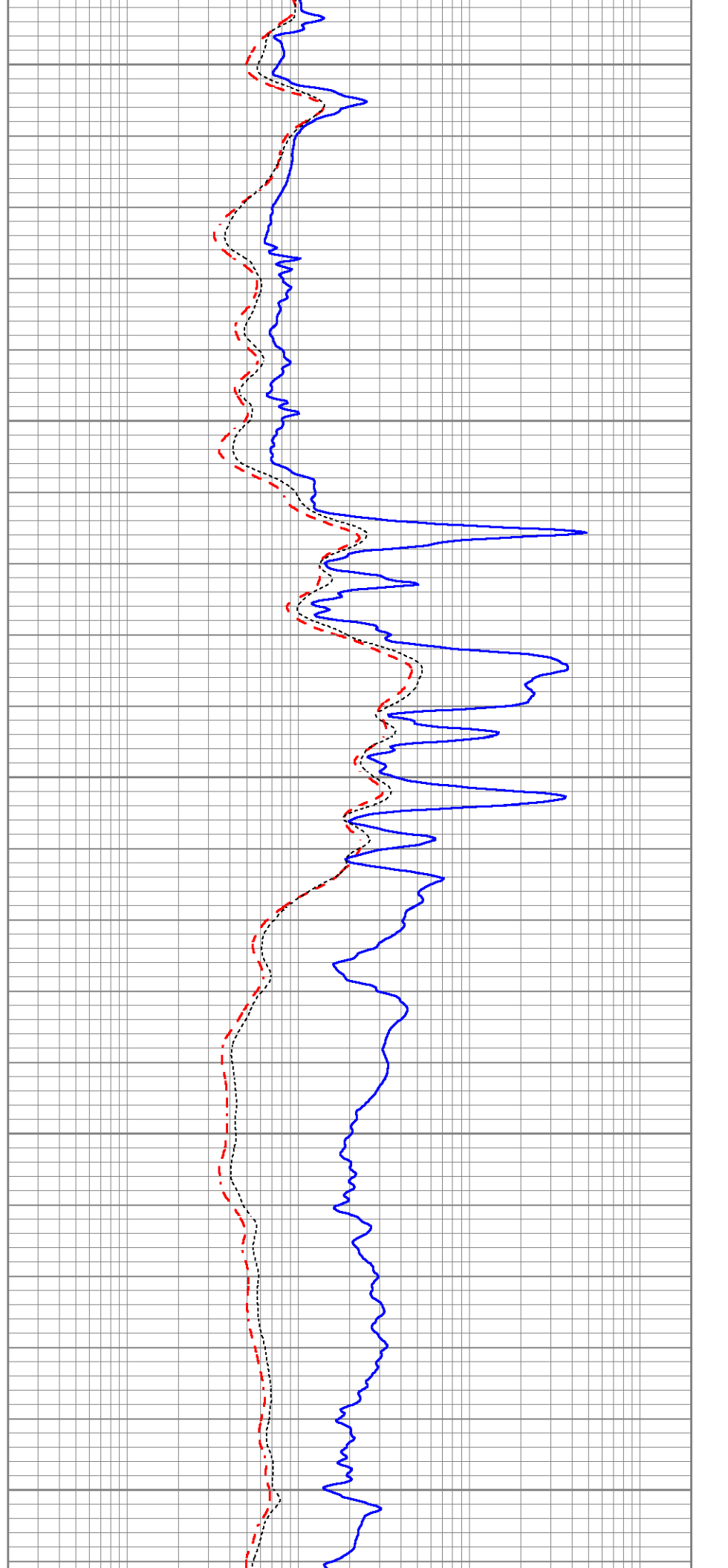
800

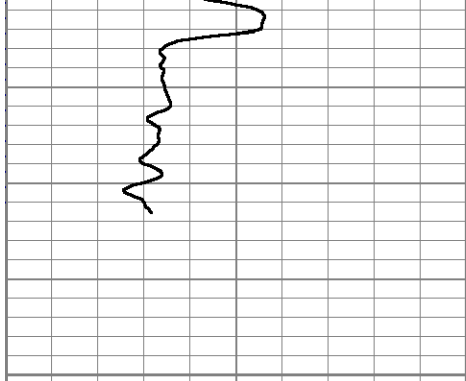
850

900

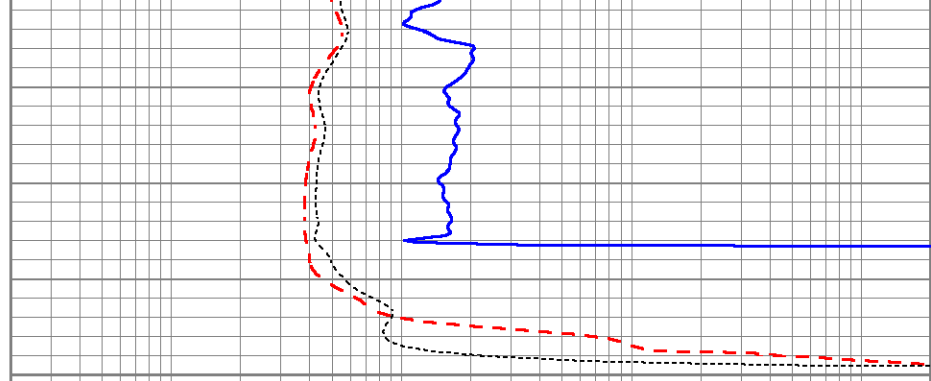
950

1000





1050



0 GR (GAPI) 150

0.2	RILD (Ohm-m)	2000
0.2	RLL3 (Ohm-m)	2000
0.2	RILM (Ohm-m)	2000

Sensor	Offset (ft)	Schematic	Description	Length (ft)	O.D. (in)	Weight (lb)
			Cable-CableHead Isulation Sub	1.42	3.00	20.00
CLL3	14.83					
			Induction-Landy1538 (1538) Induction Tool	17.59	4.00	300.00
CILD	6.50					
CILM	3.33					
SP	0.83					

Dataset: ow2-8784 colt energy.db: field/well/DIL/pass1
 Total length: 19.01 ft
 Total weight: 320.00 lb
 O.D.: 4.00 in