



**MIDWEST SURVEYS**  
 LOGGING - PERFORATING - CONSULTING SERVICES  
 P.O. Box 68, Osawatomie, KS 66064  
 913 / 755 - 2128

**GAMMA RAY / NEUTRON / CCL**

File No. \_\_\_\_\_

Company **Birk Petroleum**

Well **Sutherland No.-52**

Field **Crandall North**

County **Coffey**

State **Kansas**

Location **2145' FSL & 3465' FEL**

Other Services **Perforate**

Sec. 31 **Temp. 22S** **Range 16e** **Elevation 1011'**

Permanent Datum **GL** **KB NA** **Elevation**

Log Measured From **GL** **D.F. NA** **D.F. NA**

Drilling Measured From **GL** **GL** **GL**

Date **11-11-2014**

Run Number **One**

Depth Driller **1079.0**

Depth Logger **1081.2**

Bottom Logged Interval **1080.2**

Top Log Interval **20.0**

Fluid Level **Full**

Type Fluid **Water**

Density / Viscosity **NA**

Salinity / PPM Cl **NA**

Max Recorded Temp **NA**

Estimated Cement Top **0.0**

Equipment No. **102** **Osawatimie**

Recorded By **Gary Windisch**

Witnessed By **Brian Birk**

BORE-HOLE RECORD

CASING RECORD

NO. BIT FROM TO SIZE WGT. FROM TO

One 9.875" 40.0 7.00" 17.0# 0.0 40.0

Two 6.25" 40.0 1079.0 2.875" 6.5# 0.0 1073.0

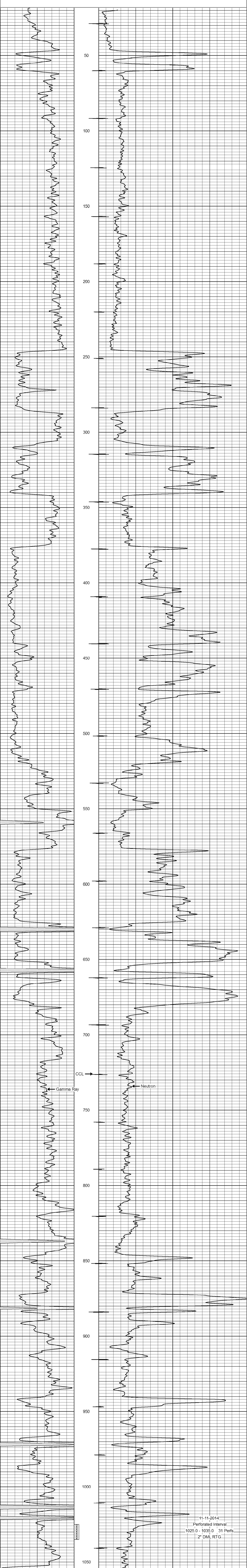
<<< Fold Here >>>

All interpretations are opinions based on inferences from electrical or other measurements and we cannot and do not guarantee the accuracy or correctness of any interpretation, and we shall not, except in the case of gross or willful negligence on our part, be liable or responsible for any loss, costs, damages, or expenses incurred or sustained by anyone resulting from any interpretation made by any of our officers, agents or employees. These interpretations are also subject to our general terms and conditions set out in our current Price Schedule.

Comments

Drilling Contractor : **Birk Petroleum**

Database File: sutherland52.db  
 Dataset Pathname: pass1  
 Presentation Format: gr-n-ccl  
 Dataset Creation: Tue Nov 11 09:16:19 2014 by Log SCH 111116  
 Charted by: Depth in Feet scaled 1:240



0 Gamma Ray (cps) 150  
 150 Gamma Ray (cps) 300  
 -1 CCL 1  
 100 Neutron (cps) 1900